

TAC TB-C05 Arrow Side Steps Running Boards



## TAC TB-C05 Arrow Side Steps Running Boards Instruction Manual

[Home](#) » [TAC](#) » TAC TB-C05 Arrow Side Steps Running Boards Instruction Manual 

### Contents

- 1 TAC TB-C05 Arrow Side Steps Running Boards
- 2 Product Usage Instructions
- 3 ARROW SIDE STEP
- 4 Torque & Tools
- 5 BEFORE INSTALLATION
- 6 INSTALLATION
- 7 Documents / Resources
  - 7.1 References



**TAC TB-C05 Arrow Side Steps Running Boards**



### **Specifications:**

- Installation Time: 60-120 minutes
- Cutting: Not Required
- Drilling: Not Required
- Fitment: ARROW SIDE STEP, PART #: TB-C05
- **Compatible with:**
  - 2019-Up Chevy Silverado 1500 Crew Cab
  - 2020-Up Chevy Silverado 2500-3500 Crew Cab
  - 2019-Up GMC Sierra 1500 Crew Cab
  - 2020-Up GMC Sierra 2500-3500 Crew Cab
- **Torque & Tools:**
  - Fastener Size: 6mm, 8mm, 10mm, 12mm
  - Tightening Torque (ft-lbs): 7-8.5, 18-20, 35-40, 60-70
  - Wrench Required: 10mm, 13mm, 16mm, 18mm
  - Allen Wrench Required: 4mm, 5mm, 6mm, 8mm

### **Product Usage Instructions**

#### **Before Installation:**

- Remove all contents from the box and verify all parts are present.
- Read instructions carefully before starting the installation.

- Assistance is recommended for installation.

### **Installation Steps:**

1. **Step 1:** Start the installation under the Passenger/Right side of the vehicle.
  1. For Early 2019 models, locate the plugs along the bottom edge of the body and bolt Mounting Brackets accordingly.
  2. For Late 2019 models, use all mounting locations.
2. **Step 2:** Remove the plastic plugs from the Passenger/Right front mounting location.
3. **Step 3:** Select a Mounting Bracket and attach it to the factory threaded holes using the provided hardware. Do not tighten yet.

### **FAQ:**

- **Q: Do I need to drill or cut anything during the installation?**

A: No, cutting or drilling is not required for installing this product.

- **Q: What tools are required for installation?**

A: You will need wrenches of sizes 10mm, 13mm, 16mm, and 18mm, along with an Allen wrench of size 4mm, 5mm, 6mm, and 8mm.

### **ARROW SIDE STEP**

**PART #:** TB-C05

### **FITS:**

- 2019-Up Chevy Silverado 1500 Crew Cab
- 2020-Up Chevy Silverado 2500-3500 Crew Cab
- 2019-Up GMC Sierra 1500 Crew Cab
- 2020-Up GMC Sierra 2500-3500 Crew Cab



60-120 min


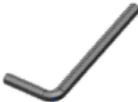


Cutting Not  
Required



Drilling Not  
Required

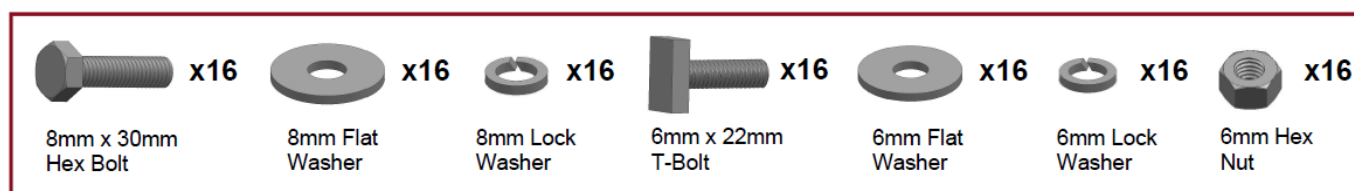
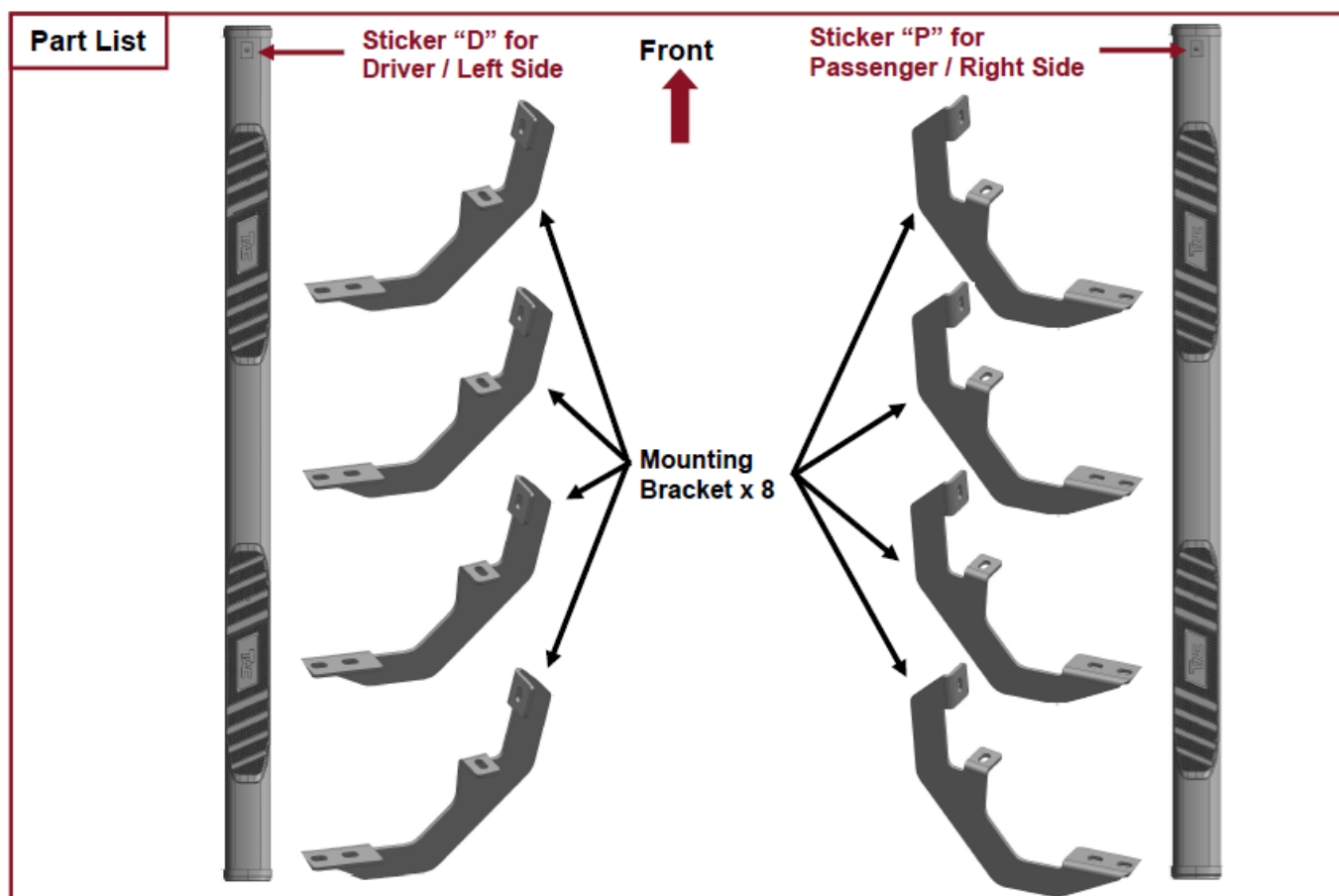
## Torque & Tools

Fastener Size	Tightening Torque (ft-lbs)	Wrench Required		Allen Wrench Required	
<input checked="" type="checkbox"/> 6mm	<input checked="" type="checkbox"/> 7-8.5		<input checked="" type="checkbox"/> 10mm		<input type="checkbox"/> 4mm
<input checked="" type="checkbox"/> 8mm	<input checked="" type="checkbox"/> 18-20		<input checked="" type="checkbox"/> 13mm		<input type="checkbox"/> 5mm
<input type="checkbox"/> 10mm	<input type="checkbox"/> 35-40		<input type="checkbox"/> 16mm		<input type="checkbox"/> 6mm
<input type="checkbox"/> 12mm	<input type="checkbox"/> 60-70		<input type="checkbox"/> 18mm		<input type="checkbox"/> 8mm

## BEFORE INSTALLATION

REMOVE CONTENTS FROM BOX. VERIFY ALL PARTS ARE PRESENT. READ INSTRUCTIONS CAREFULLY BEFORE STARTING INSTALLATION. ASSISTANCE IS RECOMMENDED.

## Part List



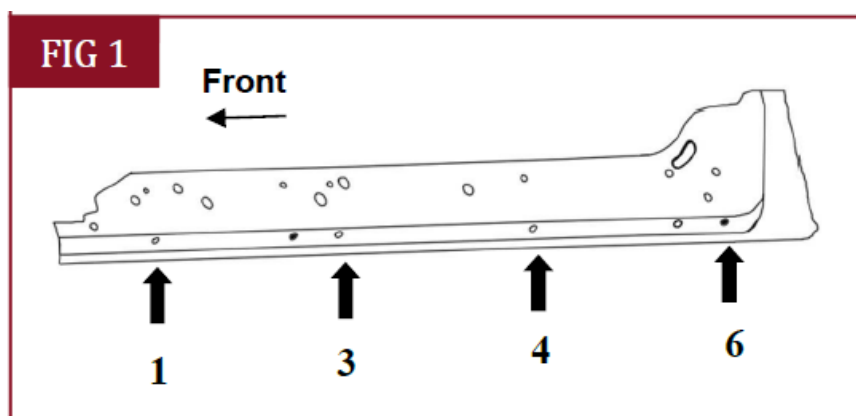
**PLEASE NOTE** THAT THE FOLLOWING PICTURES ARE BASED ON THE PASSENGER SIDE INSTALLATION

## INSTALLATION

### 1. STEP 1

Start the installation under the Passenger/Right side of the vehicle.

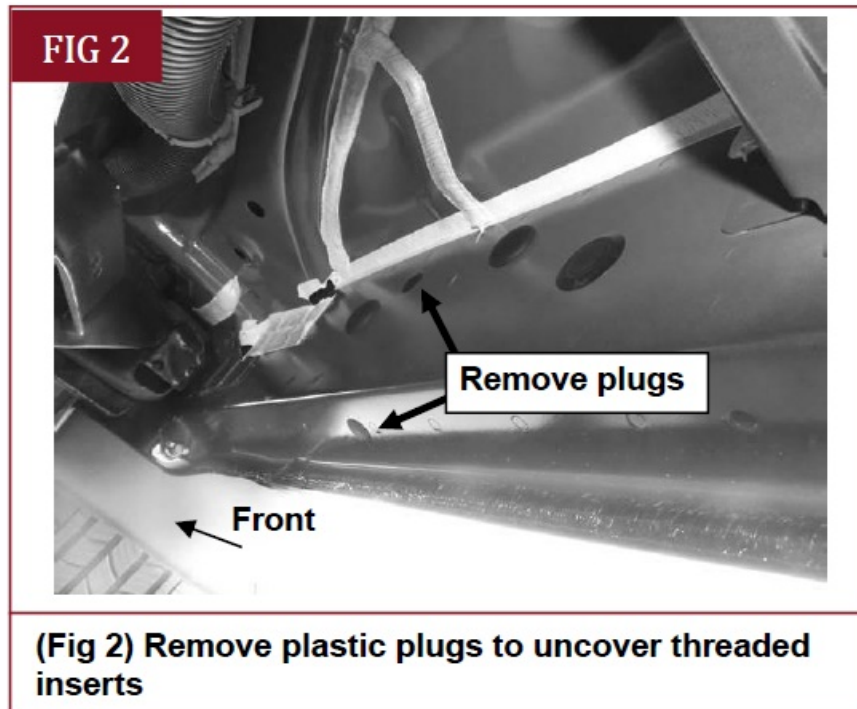
1. For "Early" 2019 models, locate the 8 plugs along the bottom edge of the body. Mounting Brackets will bolt to the 1st, 3rd, 4th and 6th threaded mounting holes, (Fig 1).
2. For "Late" 2019 models, all (4) mounting locations will be used.



(Fig 1) Passenger/Right “Early” rocker panel mounting locations (arrows) NOTE: Hold Bracket up to body panel to help determine the correct mounting locations.

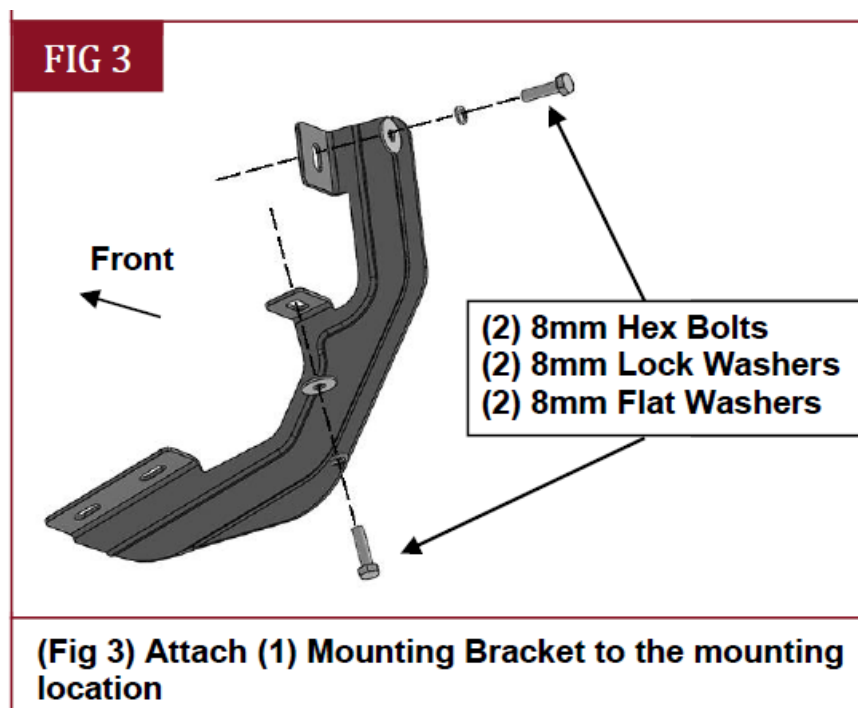
## 2. STEP 2

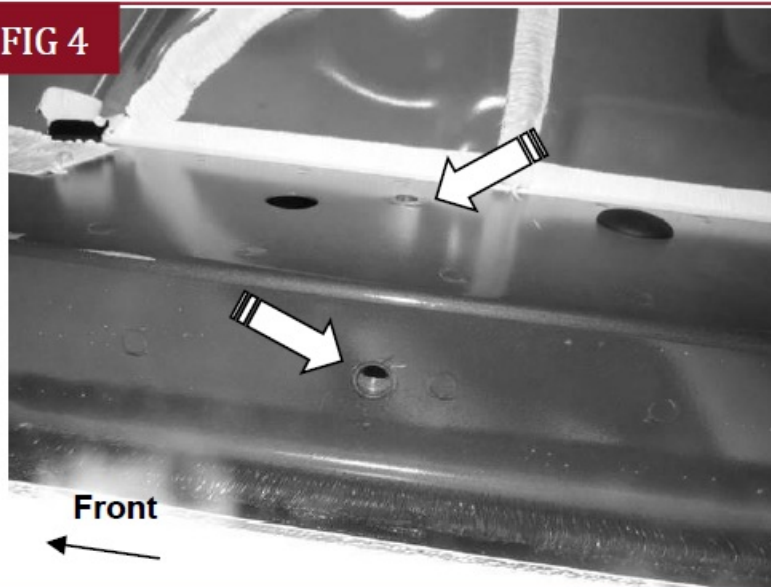
1. Remove the plastic plugs from the
2. Passenger/Right front mounting location, (Fig 2).



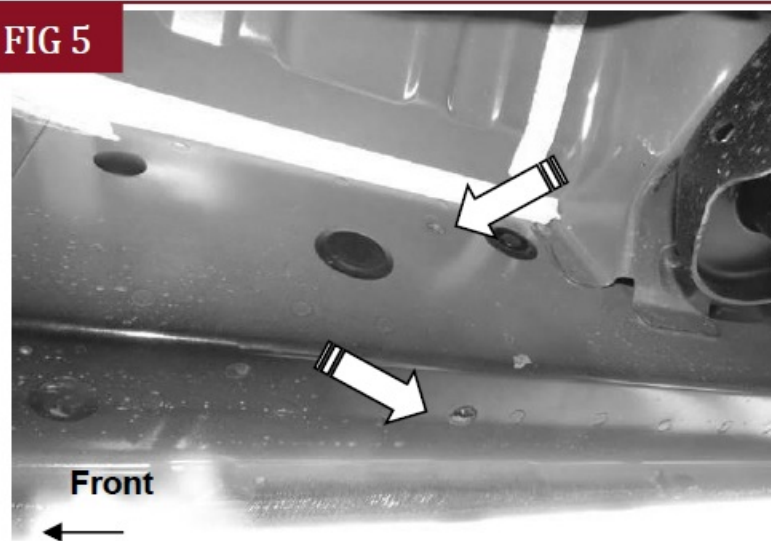
## 3. STEP 3

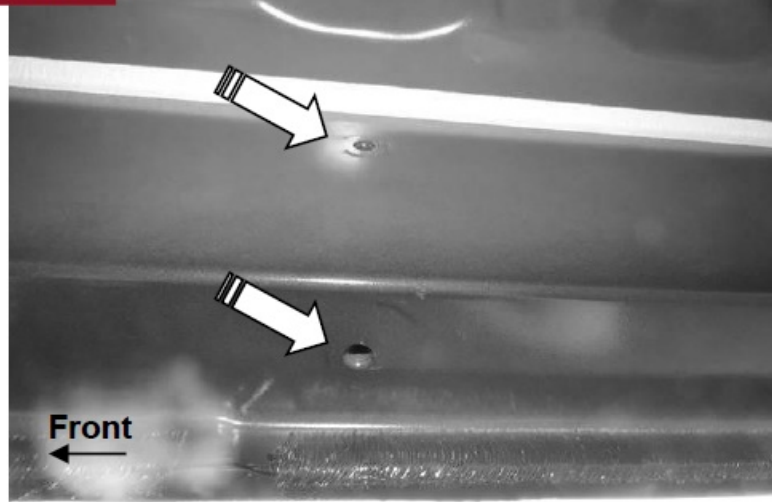
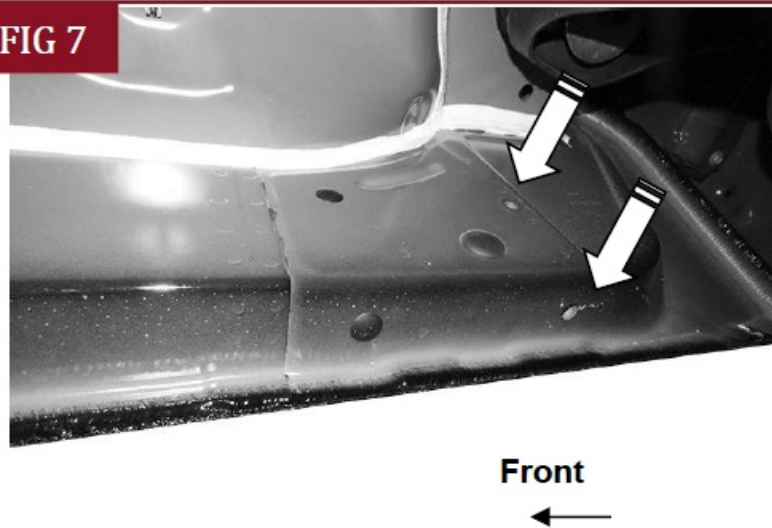
Select (1) Mounting Bracket. Attach the Mounting Bracket to the factory threaded holes with (2) 8mm Hex Bolts, (2) 8mm Lock Washers and (2) 8mm Flat Washers, (Figs 3 & 4). Do not tighten hardware.



**FIG 4****(Fig 4) Passenger/Right front mounting location****4. STEP 4**

Repeat Steps 1 – 3 to attach the (3) remaining Passenger/Right Mounting Brackets to the (3) remaining locations along the rocker panel, (Figs 5—7). Do not tighten hardware.

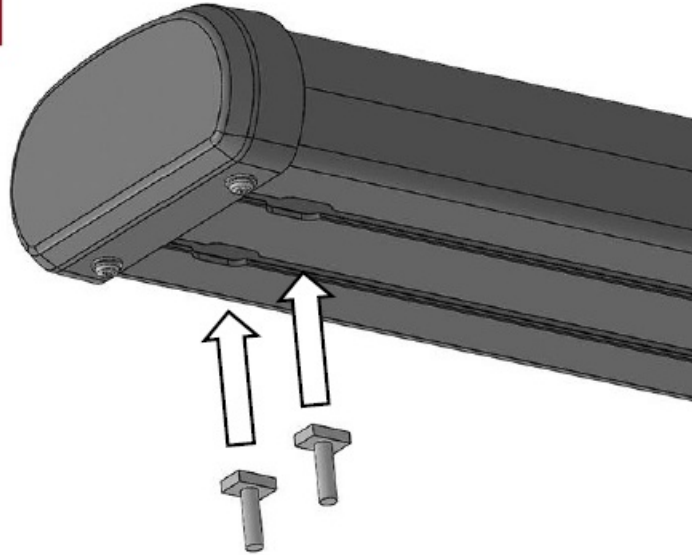
**FIG 5****(Fig 5) Passenger/Right 2nd mounting location**

**FIG 6****(Fig 6) Passenger/Right 3rd mounting location****FIG 7****(Fig 7) Passenger/Right rear mounting location**

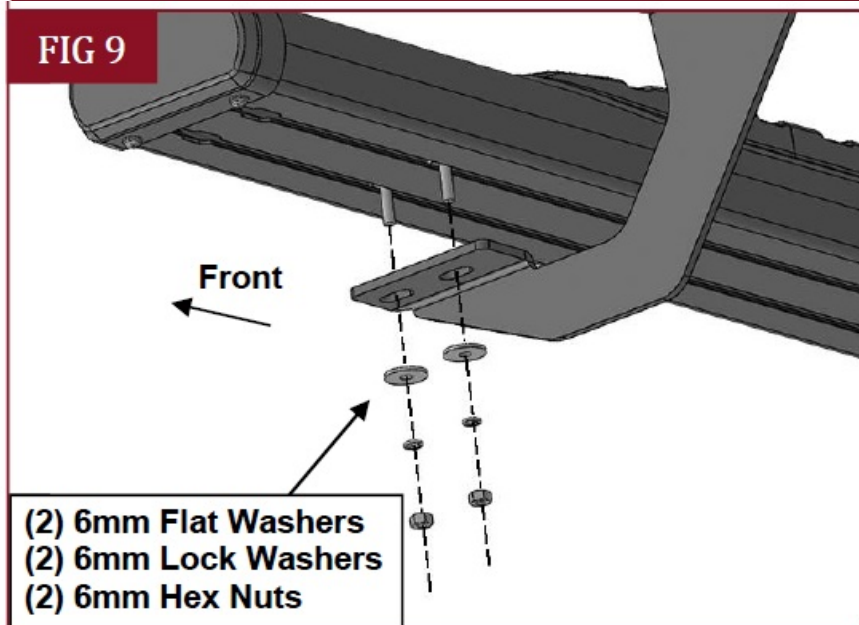
#### 5. STEP 5

Select the Passenger/Right Side Step. NOTE: The Passenger/Right Side Step have a Sticker "P" on the front. Insert (8) 6mm T-Bolts into the channels in the bottom of the Side Step, (Fig 8),(4 T-Bolts per channel). Attach the Side Step to the (4) Mounting Brackets with (8) 6mm Flat Washers, (8) 6mm Lock Washers and (8) 6mm Hex Nuts, (Fig 9). Do not tighten hardware.



**FIG 8**

**(Fig 8) Insert (8) 6mm T-Bolts into the channels in the bottom of the Side Step, (4 T-Bolts per channel)**

**FIG 9**

**(Fig 9) Attach Passenger/Right Side Step to the (4) Mounting Brackets**

**6. STEP 6**

Level and adjust the Side Step and fully tighten all hardware.

**7. STEP 7**

Repeat Steps 1—6 to attach the Driver/Left Side Step.

**8. STEP 8**

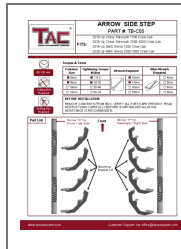
Do periodic inspections to the installation to make sure that all hardware is secure and tight.

**Attention**

- To protect your investment, do not use any type of polish or wax that may contain abrasives that could damage the finish.
- Mild soap may be used also to clean the Side Steps.

---

## Documents / Resources



### [TAC TB-C05 Arrow Side Steps Running Boards](#) [pdf] Instruction Manual

TB-C05 Arrow Side Steps Running Boards, TB-C05, Arrow Side Steps Running Boards, Side Steps Running Boards, Steps Running Boards, Running Boards, Boards

## References

- [TAC TACUSA](#)
- [User Manual](#)

### Manuals+, Privacy Policy

This website is an independent publication and is neither affiliated with nor endorsed by any of the trademark owners. The "Bluetooth®" word mark and logos are registered trademarks owned by Bluetooth SIG, Inc. The "Wi-Fi®" word mark and logos are registered trademarks owned by the Wi-Fi Alliance. Any use of these marks on this website does not imply any affiliation with or endorsement.