



TAC SW-C06 Sidewinder Running Boards Instruction Manual

[Home](#) » [TAC](#) » TAC SW-C06 Sidewinder Running Boards Instruction Manual 

TAC SW-C06 Sidewinder Running Boards



Contents

- [1 Torque & Tools](#)
- [2 BEFORE INSTALLATION](#)
- [3 Part List](#)
- [4 INSTALLATION INSTRUCTIONS](#)
- [5 CUSTOMERS SUPPORT](#)
- [6 Documents / Resources](#)
 - [6.1 References](#)
- [7 Related Posts](#)

Torque & Tools

- 60-120 min





- Cutting Not Required



- Drilling Not Required

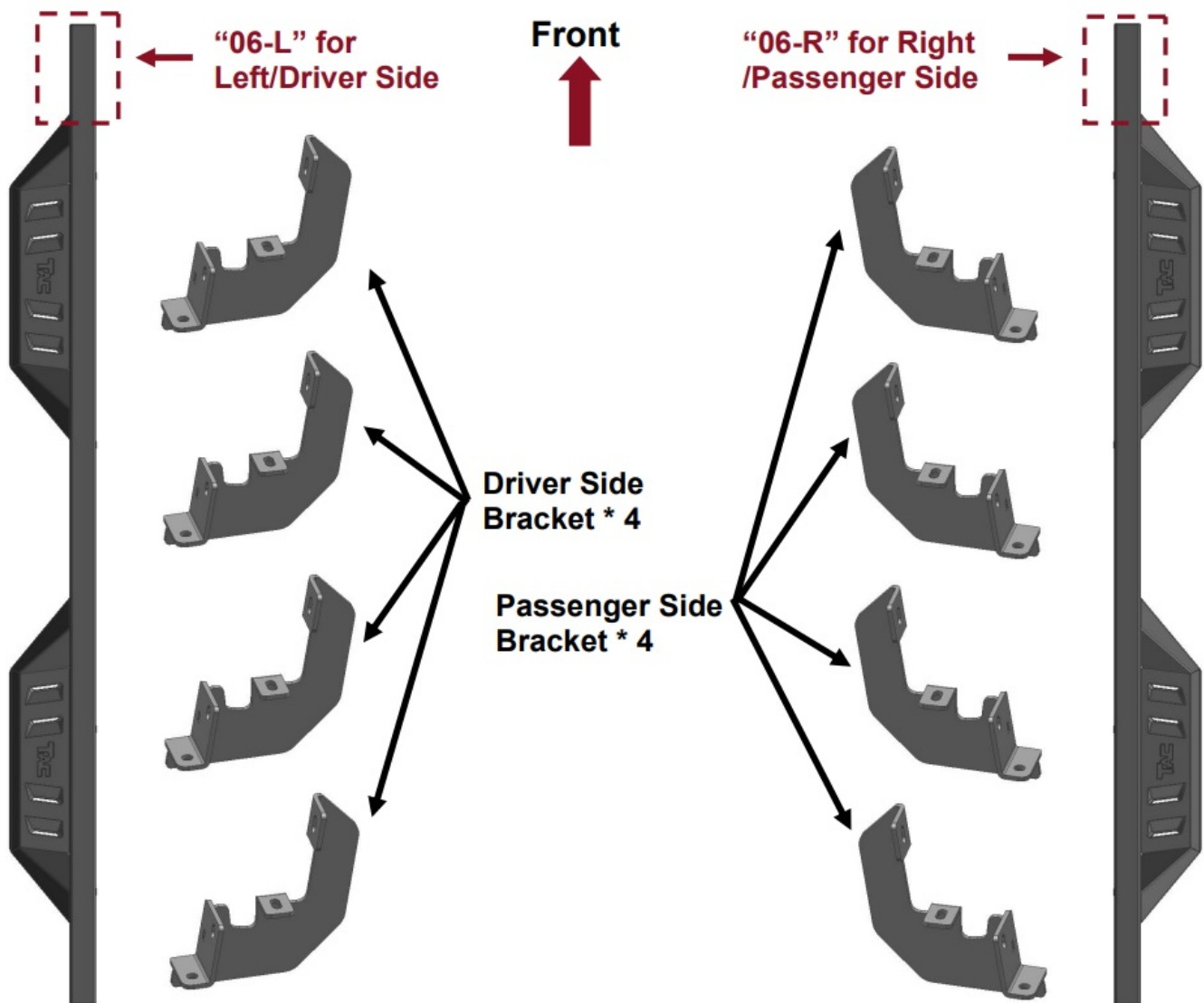


Fastener Size	Tightening Torque (ftlbs)	Wrench Required		Allen Wrench Required	
□ 6mm	□ 7-8.5		□ 10mm		□ 4mm
■ 8mm	■ 18-20		■ 13mm		□ 5mm
□ 10mm	□ 35-40		□ 16mm		□ 6mm
□ 12mm	□ 60-70		□ 18mm		□ 8mm

BEFORE INSTALLATION

REMOVE CONTENTS FROM BOX. VERIFY ALL PARTS ARE PRESENT. READ INSTRUCTIONS CAREFULLY BEFORE STARTING INSTALLATION. ASSISTANCE IS RECOMMENDED.

Part List



- 8mm x 30mm Hex Bolt



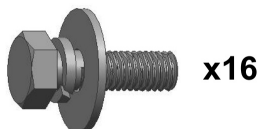
- 8mm Flat Washer



- 8mm Lock Washer



- 8mm x 25mm Combo Bolt



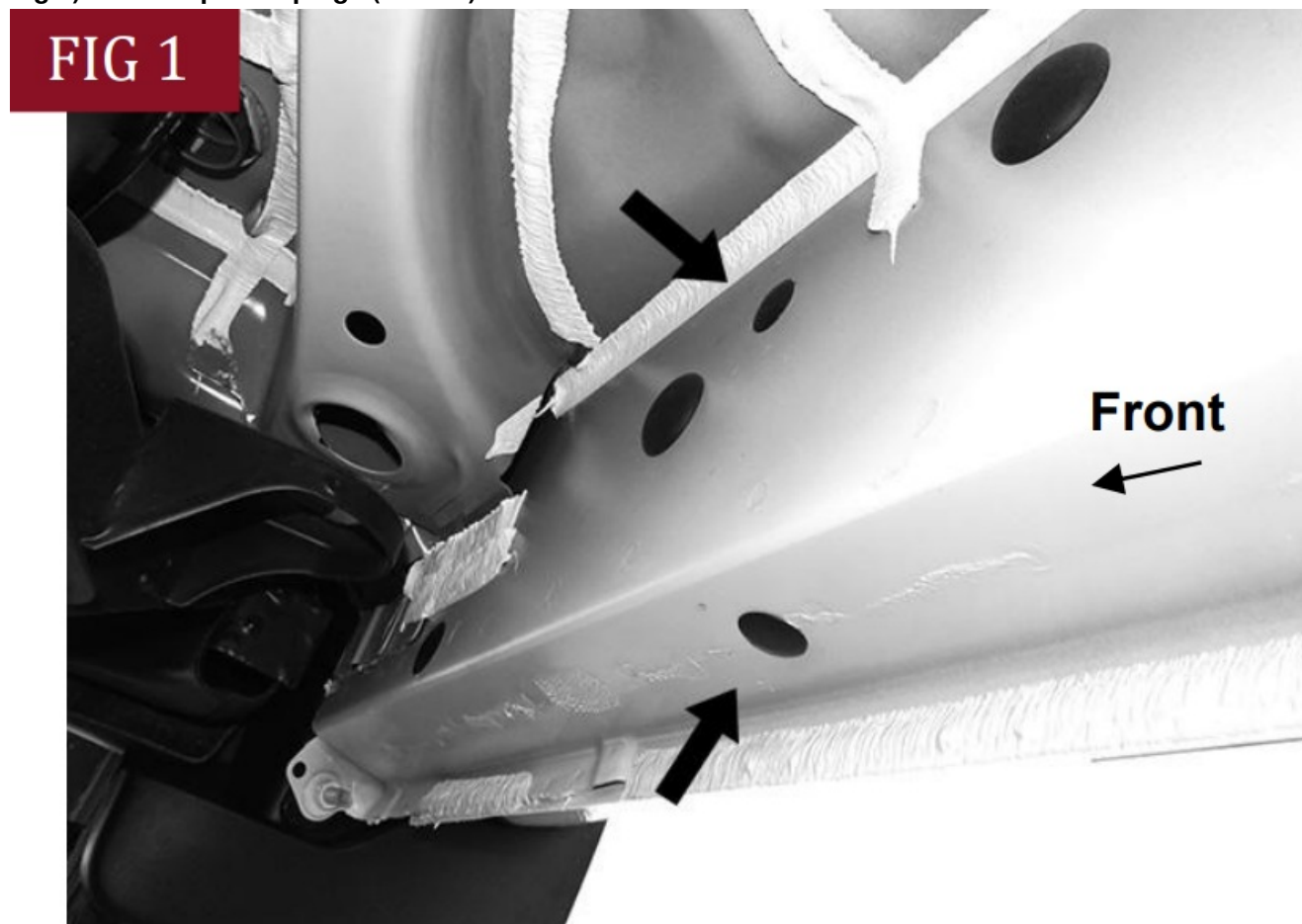
INSTALLATION INSTRUCTIONS

PLEASE NOTE THAT THE FOLLOWING PICTURES ARE BASED ON THE PASSENGER SIDE INSTALLATION

STEP 1

Start the installation under the Passenger/Right side of the vehicle. Locate the 8 plugs along the bottom edge of the body. Remove the plastic plugs from each mounting location, (Fig 1).

Fig 1) Remove plastic plugs (arrows) to uncover threaded holes in floor

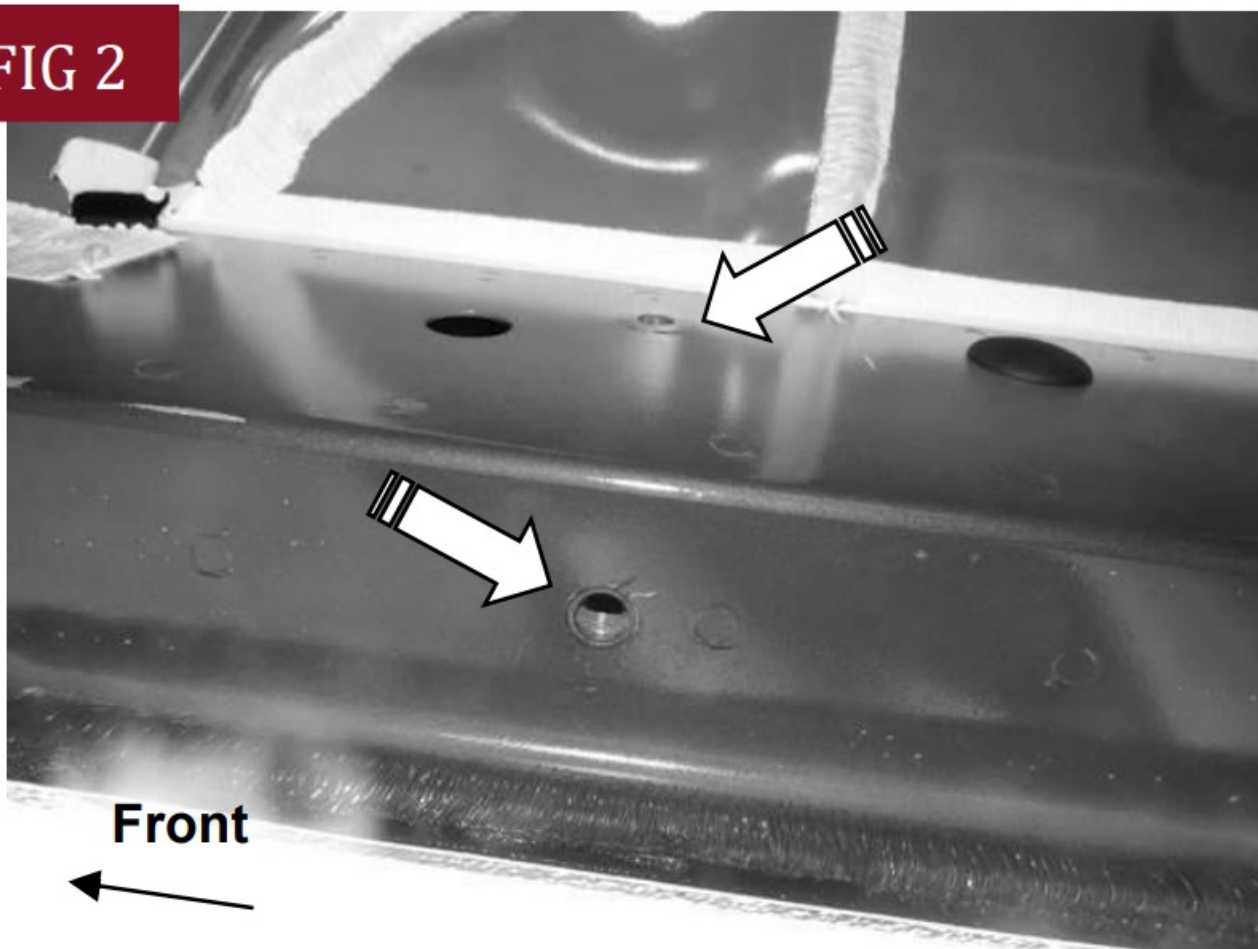


STEP 2

Mounting Brackets will attach to all threaded mounting holes, (Fig 2). Directly above each threaded hole is a top mounting location on the side of the body panel. Hold a Bracket up in place to help determine the mounting holes to use along the body. **NOTE:** Thread an 8mm Hex Bolt into the threaded holes to clear paint as required.

(Fig 2) Threaded holes (arrows) under the plastic plugs

FIG 2

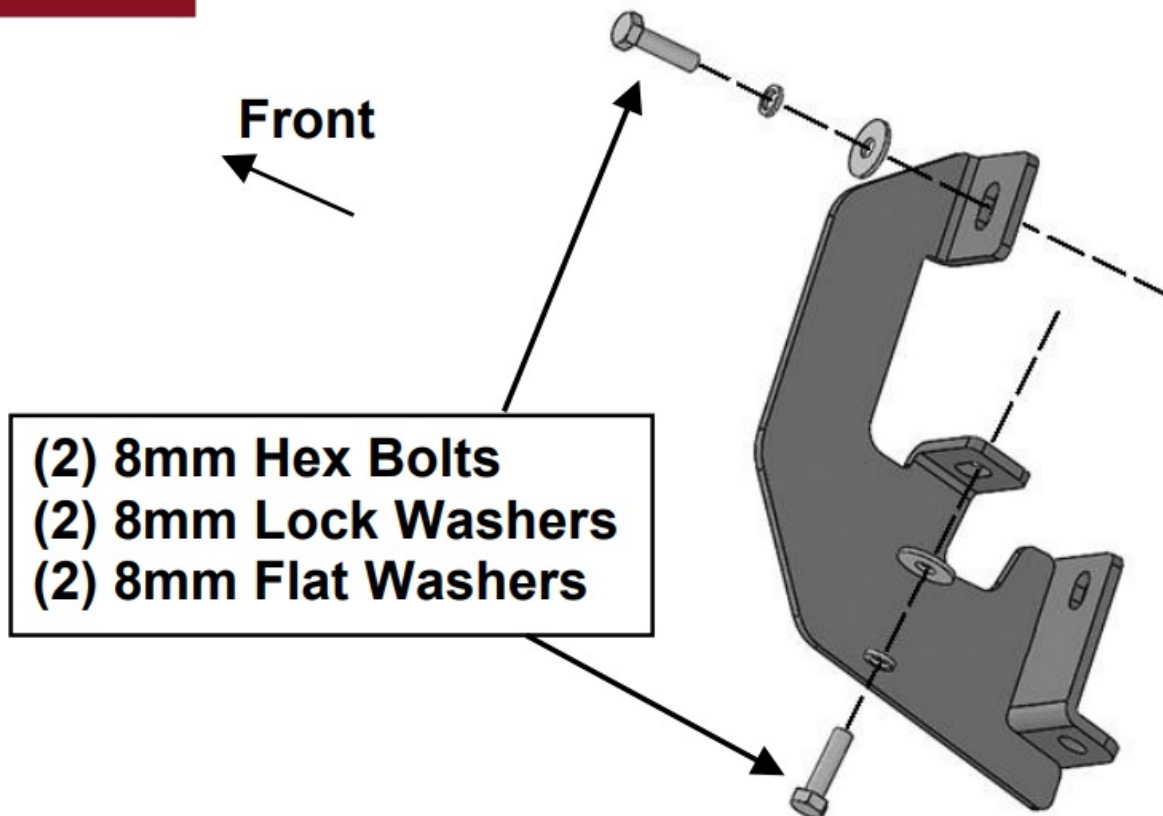


STEP 3

Select (1) Passenger/Right Mounting Bracket. Attach the Mounting Bracket to the factory threaded holes with (2) 8mm Hex Bolts, (2) 8mm Lock Washers and (2) 8mm Flat Washers, (Fig 3). Do not tighten hardware.

(Fig 3) Attach (1) Mounting Bracket to the Passenger/Right front location

FIG 3



STEP 4

Move along the body to the next mounting location. Repeat Steps 1 – 3 to attach the remaining (3) Passenger/Right Mounting Bracket to the (3) remaining locations.

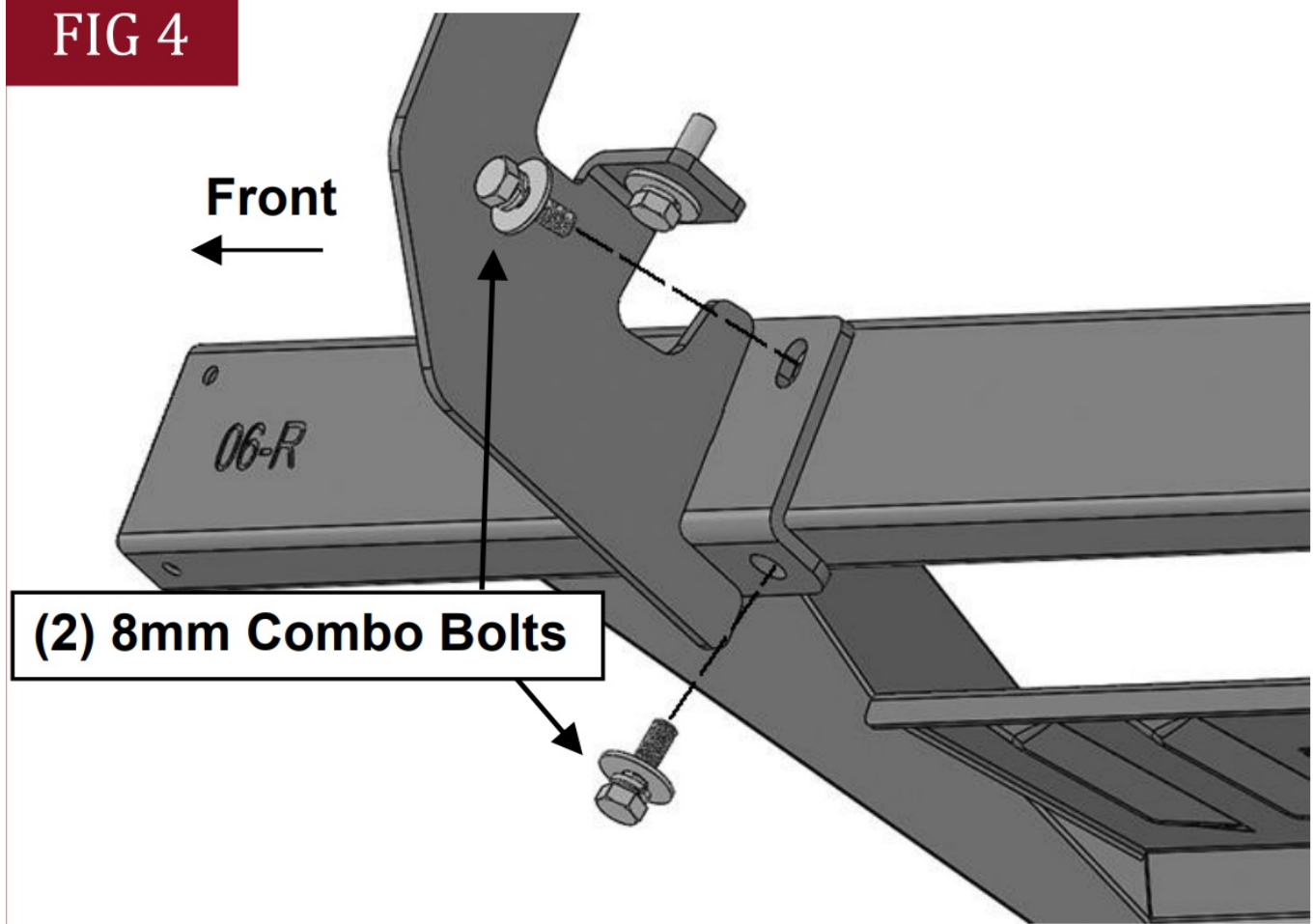
STEP 5

Select the Passenger/Right Running Board.

NOTE: The Passenger/Right Running Board will have a "06-R" on the front. Place the Running Board onto the Mounting Brackets. **IMPORTANT:** Do not slide the Running Board front to back or damage to the finish may result. Attach the Running Board to the Mounting Brackets with (8) 8mm Combo Bolts, (Fig 4).

(Fig 4) Attach the Passenger/Right Running Board to the Mounting Brackets

FIG 4



STEP 6

Level and adjust the Running Board and fully tighten all hardware.

STEP 7

Repeat Steps 1—6 to attach the Driver/Left Running Board.

STEP 8

Do periodic inspections to the installation to make sure that all hardware is secure and tight.

Attention

To protect your investment, do not use any type of polish or wax that may contain abrasives that could damage the finish.

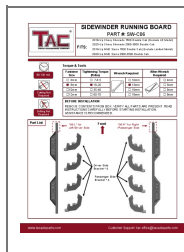
Mild soap may be used also to clean the Running Boards.

CUSTOMERS SUPPORT

www.tacautoparts.com



Documents / Resources



[TAC SW-C06 Sidewinder Running Boards](#) [pdf] Instruction Manual
SW-C06 Sidewinder Running Boards, SW-C06, Sidewinder Running Boards, Running Boards, Boards

References

- [TAC TACUSA](#)
- [User Manual](#)

[Manuals+](#), [Privacy Policy](#)

This website is an independent publication and is neither affiliated with nor endorsed by any of the trademark owners. The "Bluetooth®" word mark and logos are registered trademarks owned by Bluetooth SIG, Inc. The "Wi-Fi®" word mark and logos are registered trademarks owned by the Wi-Fi Alliance. Any use of these marks on this website does not imply any affiliation with or endorsement.