



## T R Q3 Excellent Four Port Mahjong Machine Instruction Manual

[Home](#) » [T R](#) » T R Q3 Excellent Four Port Mahjong Machine Instruction Manual 



With T&R at home brings prosperity  
Excellent Four-Port Mahjong Machine  
Product User Manual



Please read this manual carefully before use and keep it properly



Thank you very much for choosing our automatic mahjong machine.

Our company is a professional manufacturer of automatic mahjong machines.

The automatic mahjong machine introduces high-tech microcomputer intelligent system components, and adopts the internationally leading digital photochemical! electrical integrated computer system. It has the microcomputer control function, further improves the working performance of the mechanical structure at the same time, expands the functional range, simplifies the circuit, and fully guarantees the reliability of the circuit control system. It is simple to operate and easy to maintain, with the advantages of fast card shuffling time, low machine noise, low card error rate. The products sell well in mainland China, Hong Kong, Taiwan, and are exported to Japan, Southeast Asia and other countries and regions.

Our company always adheres to the tenet of "survival by quality, benefit by management, and development by service" to strengthen quality management. Manufacturing high-quality products is our eternal pursuit.

To provide high-quality products at reasonable prices to meet customer needs.

## Contents

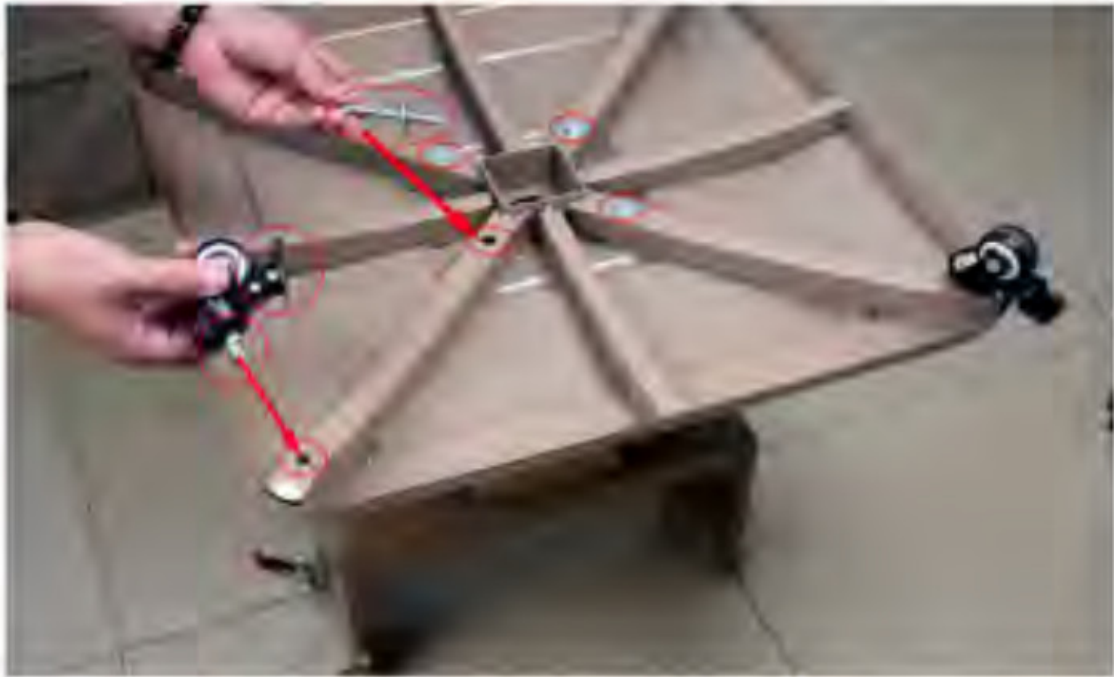
- 1 Installation Diagram of Folding Legs
- 2 Maintenance Instructions
- 3 Basic operating sequence
- 4 Warranty
- 5 Daily maintenance
- 6 Technical parameter
- 7 Documents / Resources
- 7.1 References

## Installation Diagram of Folding Legs

1. Check if the parts are complete (universal wheels, screw parts, connecting triangular iron)



2. ① Assemble the chassis and struts, then tighten the four large screws.  
② Lock the brake and tighten the universal wheel



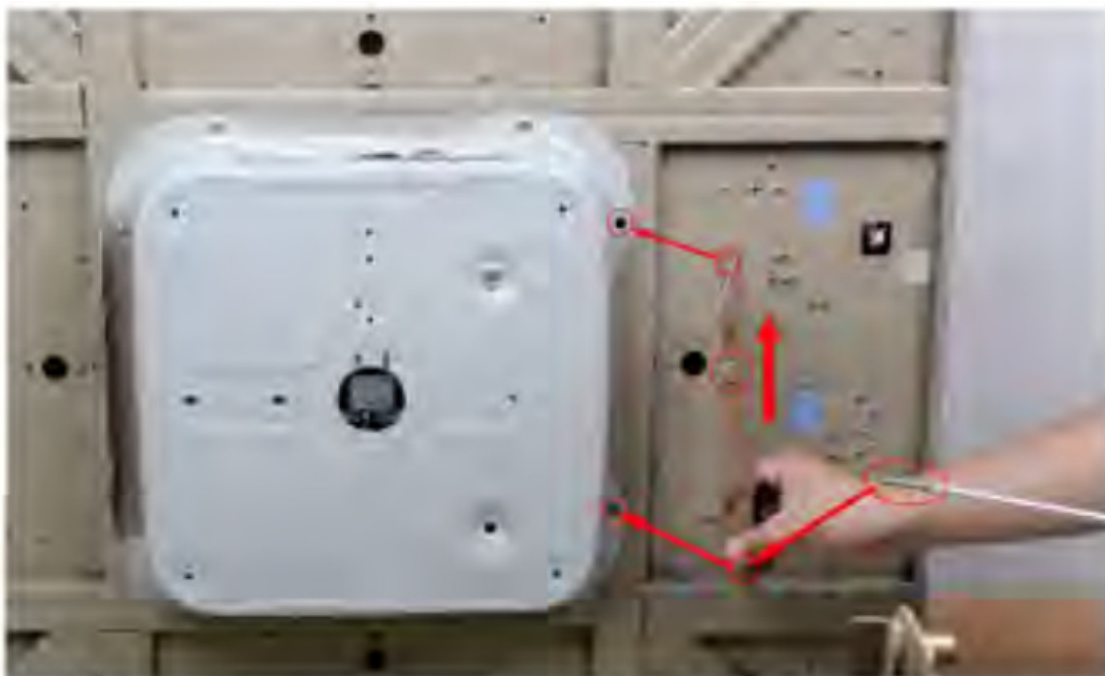
3. Install the red fastener



4. The chassis switch is located above. Remove the four screws on both sides of the chassis



5. The convex buckle is facing upwards. Then install the triangular iron



6. Connect the base to the host and tighten the red oval buckle before installing the oval gasket





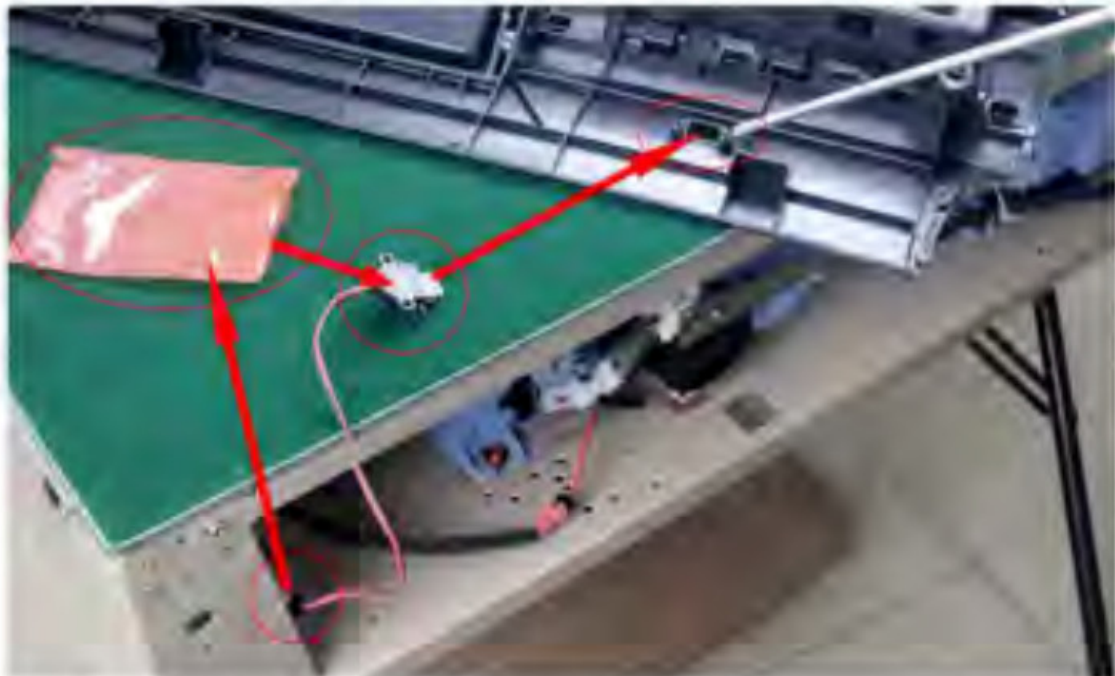
7. Lift the bost with both hands



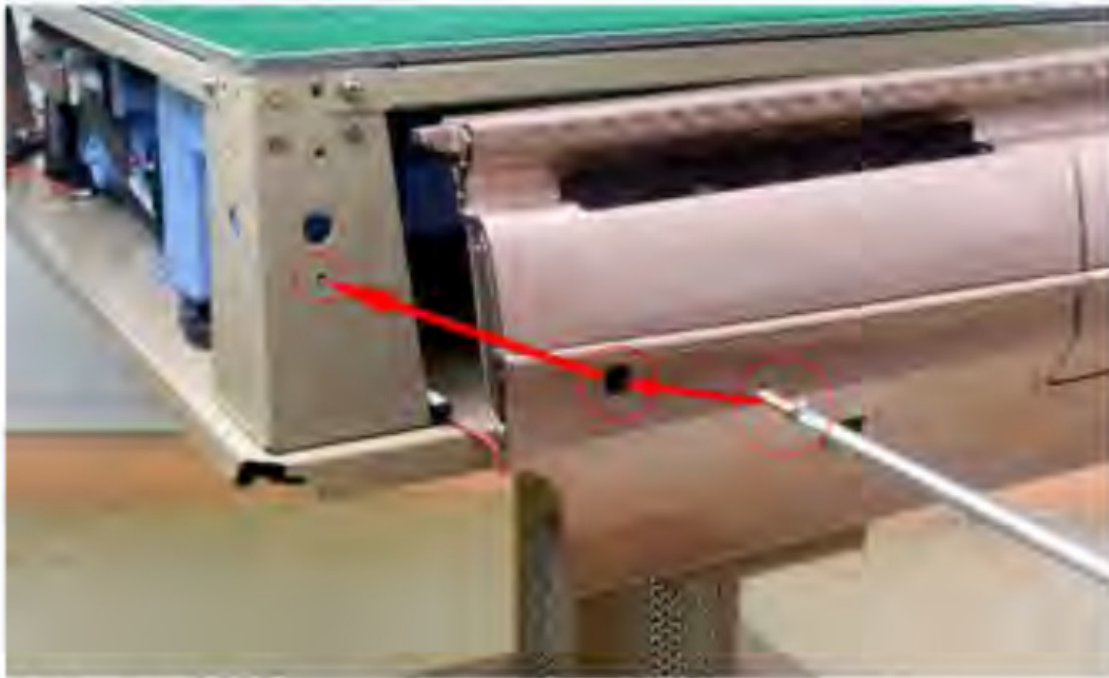
8. Remove a total of 8 frame screws from the four corners



9. Connect the USB cable and tighten the four USB charging ports using the small screws in the red bag



10. Install the frame with the removed screws



11. Tighten the corner Mat head small screws in the four corners.  
Acmetobie the black pressure strip into a square shape



12. Firmly tap the black pressure strip unto the machine





### About Folding

If folding is needed after playing, the two sets of mahjong tiles must be taken out and put away before folding.

If there is a card in the machine when folding, it will cause the mahjong tiles to fall into the machine and get stuck.

Desktop cleaning and tiles collection

When not playing the game, both sets of tiles can be stored in the mahjong machine and get ready for the next game. The specific methods are as follows:

Step: Wait for the previous set of tiles to be shuffled.

Step2: Press any lifting key to raise the operation panel.

Step3: Push the tiles on the table into the big plate.

Step4: Press and hold both dice keys at the same time, and wait for initialization.

Step5: Shut down after initialization is completed.

### Maintenance Instructions

This section only introduces electrical maintenance knowledge, which is only for reference of maintenance staff.

Common faults and cause analysis:

1. The power supply is connected, but there is no power on the motherboard. The fuse may be burnt out. First, find out the cause of the burnt fuse. Generally, it is caused by the short circuit of the motor wire. Check whether the motor wire is cut off by the transmission mechanism to cause short circuit, or whether the cable skin is damaged.
2. The indicator light of the operation panel flickers randomly or the keys do not work properly. It is usually because the connector between the signal line of the operation panel and the main board has poor contact due to long-term corrosion.
3. The dice motor does not work. Usually, the dice motor is stuck, or the drive circuit is burnt as a result.
4. The motor does not work or the bidirectional motor can rotate in only one direction. It is usually because the connector between the motor and the mainboard is poorly contacted, or the corresponding drive circuit on the mainboard is damaged.
5. The motor does not stop after running to the set position. It is usually because the connector between the corresponding sensor and the motherboard is in poor contact, or the sensor itself is aging due to long-term use, and cannot meet the performance requirements.



6. Sometimes there is a shuffle error. It may be that the card is too dirty or the sensor itself has been aged due to long-term use, or it cannot meet the sensitivity requirements.
7. The lifting plate or lifting rod stops at the wrong position. It may be that the transmission mechanism is worn and leads to offset, which requires readjustment.
7. The voice is mute or low. It may be due to poor contact of the connector or long-term corrosion failure of the interior of the voice potentiometer.
8. Wrong shuffle gear. It may be due to the poor internal contact caused by the long-term use of the gear puller, or it may be due to the poor contact with the connector between the main board.
9. The number of tiles on one player is often wrong. If the number of tiles is more than the normal value, it is usually because the performance of the head sensor is degraded. If the number of plates is less than the normal value, it is usually because the double counter is faulty.

## Basic operating sequence

### 1. Prepare

Remove the edge cover and lift the panel!

Please follow the table to select the number of tiles you require. After adjusting the gear, press the two corresponding dice keys for 5 seconds and reset (or turn off for 5 min) Special play. our company can customize according to customer requirements

Number panel	Sum	East, South, West. North (Key)
0		Debug
1	18	9t 0. 0. 0 (Fret gear)
2	160	20. 20. 20. 20
3	152	19. 19. 19. 19
4	148	19. 18. 19. 18
5	144	18. 18. 18. 18
6	142	18. 18. 18. 17
7	140	18. 17. 18. 17
8	138	18. 17. 17. 17
9	136	17. 17. 17. 17
10	132	17. 16. 17. 16
11	128	16. 16. 16. 16
12	126	16. 16. 16. 15
13	124	16. 15. 16. 15
14	120	15. 15. 15. 15
15	116	15. 14. 15. 14
16	112	14. 14. 14. 14
17	110	14. 14. 14. 13

18	108	18. 18. 18. 0
19	108	14. 13. 14. 13
20	104	13. 13. 13. 13
21	102	17. 17. 17. 0
22	102	13. 13. 13. 12
23	100	13. 12. 13. 12
24	96	16. 16. 16. 0
25	96	12. 12. 12. 12
26	92	12. 11. 12. 11
27	88	11. 11. 11. 11
28	84	14. 14. 14. 0
29	84	12. 10. 10. 10
30	84	11. 10. 11. 10
31	80	10. 10. 10. 10
32	72	12. 12. 12. 0
33	72	9. 9. 9. 9
34	54	9. 9. 9. 0
35	40	10. 0. 10. 0
36	36	18. 0. 0. 0
37	36	9. 0. 9. 0
38	32	16. 0. 0. 0
39	137	17. 17. 17. 17. 5

Put down the panel and install the edge cover

## 2. Operation

- Press the power switch. When the switch light is on, and the SET reset indicator light on the central round door of the desktop is on. or the dealer indicator light flashes in turn, it indicates that the machine is powered on.
- Please press the START lifting button on the central lifting door, and the central lifting door will open automatically. Put in the first pair of mahjong tiles. and then press the START lifting button, the center lifting door will be closed. and the machine will start to shuffle. After the work is completed, the SET reset indicator lights up, and then press the START lifting button. the center lifting door will open. Put in the second pair of mahjong tiles. and then press the START lifting button, the center lifting door will close. The first pair of tiles rises and the game begins.

## Note:

1. When the SET reset indicator is on. press any START button.
2. When the machine shuffles normally. press two START buttons at the same time.

Names of all parts of general dice box panel

**Note:** Gear adjustment instructions:

1. Press and hold the two adjacent dice keys for about 6 seconds to enter the gear shifting mode. (Figure 1).

Figure 1



2. Press the upgrade key + – to change the gear. (Figure 2)

Figure 2



3. Press one of the dice keys to confirm the shift, and the shift can be completed. (Figure 3)

Figure 3



## Warranty

Product Information			
Product name	Automatic mahjong machine	Configuration level	Grade A
Quality track number	model	Product	
Warranty		Warranty expiration date	

Client Information			
Name	(Mr./ Mrs.)	Age	
Purchase institution		Contact number	
Address		Postcode	

Salesman Information			
Sales institution		Maintenance call	
Address		Contact number	
Sale Date		Complaint call	

This card is valid only after being stamped by the sales institution. This card will be invalid upon expiration. thank you!

### Seal of manufacturer

.....

This product has been tested and proved to be qualified for delivery.

### Seal of after-sales service

.....



## Daily maintenance

In order to prolong the service life of the machine, please maintain regularly.

1. Do not place the mahjong machine in a place with strong sunlight, wind, frost, rain, snow or dust, so as not to affect the performance and shorten the service life.
2. When placing, the desktop should be parallel to the ground without excessive tilt.
3. Keep the desktop clean.
4. Don't scratch the flannel of the desktop.
5. Prevent the liquid from flowing into the mahjong machine so as not to burn the machine or rust the mechanical transmission parts.
6. Avoid fierce collision, and do not hit the machine hard so as not to damage it.
7. Clean the mahjong tiles normally and keep them dry, smooth and clean.
8. Do not put sundries into the big plate so as not to damage the transmission mechanism due to the failing of sundries.
9. Regularly ask professional maintenance staff to check the internal circuit and clean the dust on the surface of the counting sensor with professional tools. (Users should not handle it by themselves to avoid injury)

## Precautions for use

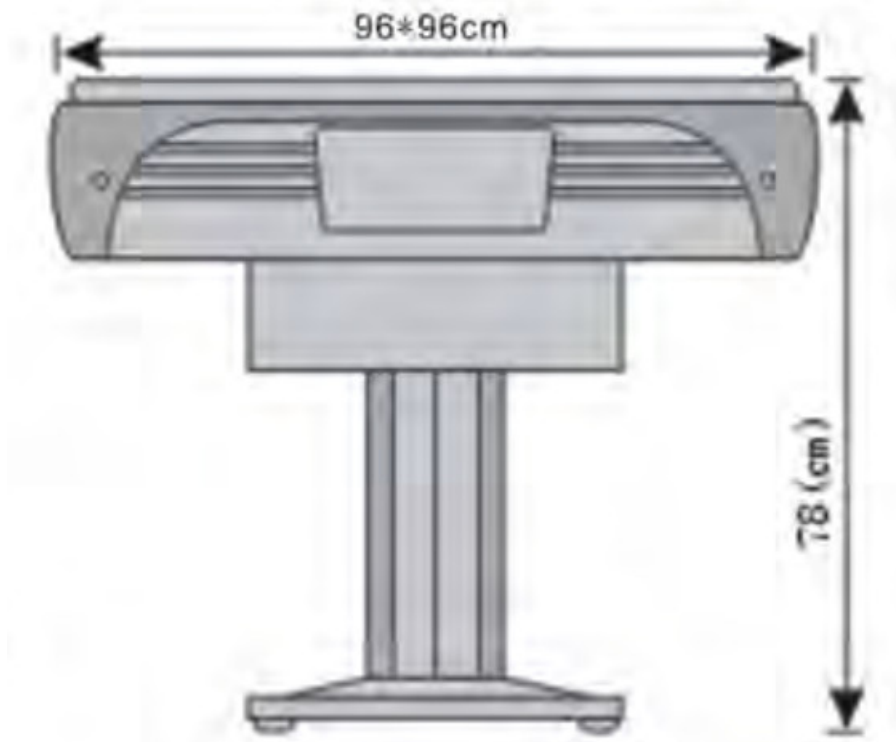
1. Do not put your hand into the big plate to avoid scratching your fingers.
2. Do not open the desktop to avoid accidental injury when the mahjong machine is working.
3. Do not put your hand into any place inside the machine when it is on to avoid electric shock or body injury when the mechanism suddenly moves.
4. Do not let children play with hard mahjong tiles to avoid injury or accidental ingestion.
5. The mahjong machine is only for healthy entertainment, it is prohibited to gamble. solemn statement: The mahjong machine provided by our company are only for entertainment, please do not use them for gambling!

## Technical parameter

The mahjong machine has three parts when leaving the factory: the main machine, the rack and the frame

**Note:** No further notice will be given if the technical parameters of this manual are modified. If customers need tea table, chips and upper cover plate, please communicate separately.

Rated power supply voltage	Phase	Rated requencey	Power	Weight
220V/110V	1	50 Hz	≤100W	≤76 kg



#### Main electrical parameters

Working voltage: AC170V~260V 50 ± 1Hz.

Applicable ambient temperature: -10°C ~+45°C.

Applicable relative humidity: ≤98%RH (40°C).

Standby power consumption: ≤5W

The maximum load capacity of each motor drive port: 0.5A when AC220V, 0.8A when AC 110V.




---

#### Documents / Resources



[T R Q3 Excellent Four Port Mahjong Machine](#) [pdf] Instruction Manual

Q3 Excellent Four Port Mahjong Machine, Q3, Excellent Four Port Mahjong Machine, Four Port Mahjong Machine, Mahjong Machine, Machine

#### References

- [User Manual](#)