

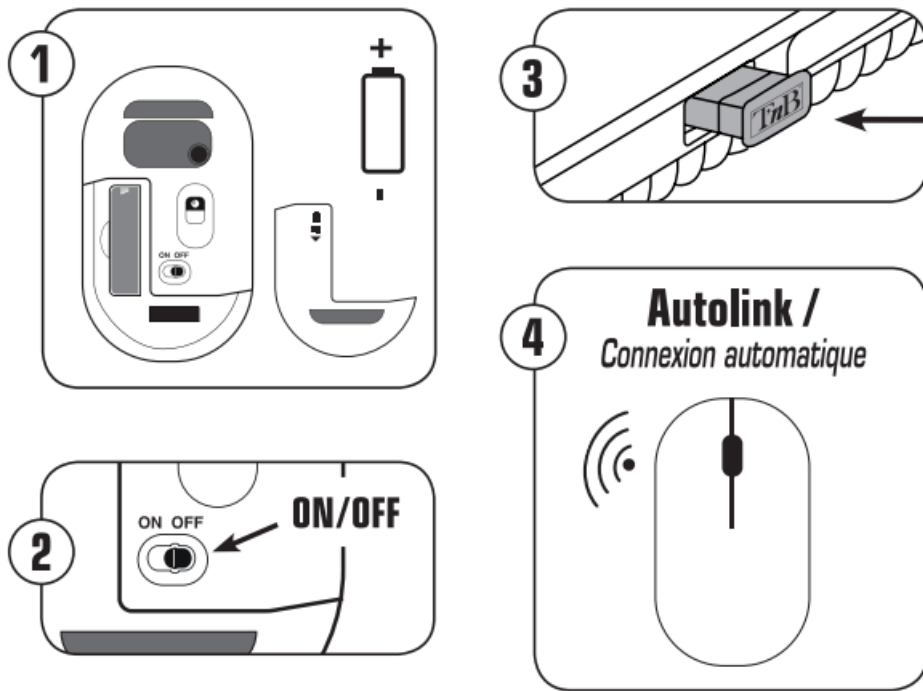


T-nB MWMAC Wireless Mac Mouse Instruction Manual

[Home](#) » [T-nB](#) » T-nB MWMAC Wireless Mac Mouse Instruction Manual 



— MWMAC —



26/08/2021 11:55

Congratulations on your purchase and thank you for the trust you have placed in 'nB. Our products comply with all relevant regulations and standards. Before using this equipment, we recommend that you read the instructions and safety instructions carefully and keep this manual for future reference.

Contents

- [1 IMPORTANT SAFETY INSTRUCTIONS](#)
- [2 NEED HELP?](#)
- [3 Documents / Resources](#)
- [4 Related Posts](#)

IMPORTANT SAFETY INSTRUCTIONS

- The power supply of your device must match the originally intended specifications
- Do not immerse the device in water. It resists only splashes of water
- Do not place flammable objects, explosive substances, or dangerous objects near your appliance
- Use only the accessories and connectors provided. The use of any other type of accessory not intended for this purpose could damage your device irreparably
- Use and keep your device in an environment where the temperature is between -10 C to 40C
- Do not disassemble your device and do not try to repair it yourself
- This device is not intended for use by persons (including children) whose physical, sensory, or mental capabilities are impaired, or persons without experience or knowledge unless they have a person with them who is responsible for their safety and surveillance or to provide prior instructions concerning the use of the device
- Keep away from children.
- Do not let the device charge unattended. In the event of a short circuit or mechanical damage to the internal Lithium battery, there is a risk of overheating and fire.
- Do not use your device if it has been damaged.
- To avoid the risk of electric shock, unplug your device from the main power supply and all devices before cleaning or when not in use.
- No guarantee can be applied in case of misuse
- The manufacturer declines all responsibility for material damage or damage (physical or moral) due to misuse and/ or non-compliance with safety instructions

- For PLUGGABLE EQUIPMENT, the socket-outlet shall be installed near the equipment and shall be easily accessible
- Only use the accessories and connectors supplied. The use of any other type of accessory not specifically designed for the purpose may cause irreparable damage to your device.

NEED HELP?

Concerned about the satisfaction of our customers, you can contact us at info@t-nb.com. Maintenance, troubleshooting, miscellaneous information about this product, please visit our website: www.t-nb.com

1. USB CONNECTION

- (1) Insert the AA battery (included) and turn on the mouse
- (2) Insert the USB dongle into the USB port of your PC; the mouse installs automatically in a few seconds.

2. BLUE TOOTH CONNECTION

- (1) insert the AA battery (included)
- (2) Take the power button to ON"
- (3) Push and hold the Bluetooth button on the back of the mouse for 3 seconds to connect it.

Open the Bluetooth parameter of your PC to search for the peripheral. Click on "MWMAC" in order to connect the mouse.

3. HOW TO SWITCH BETWEEN USB (2,4 GHZ) MODE AND BLUETOOTH?

- (1) Press the Bluetooth button on the back of the mouse.

If the LED turns red, the mouse is connected by a USB

If the LED turns blue, the mouse is connected by Bluetooth



t-nb.com

T'n8 SA France / Rue Nicolas Joseph Cugnot
PA de La Crau / 13300 Salon-de-Provence

Documents / Resources



[T'nB MWMAC Wireless Mac Mouse](#) [pdf] Instruction Manual
MWMAC, Wireless Mac Mouse