

## **T LED HN2K 4 Key Panel RF Remote Controller**



# **T LED HN2K 4 Key Panel RF Remote Controller Owner's Manual**

[Home](#) » [T-LED](#) » T LED HN2K 4 Key Panel RF Remote Controller Owner's Manual 

### **Contents**

- [1 T LED HN2K 4 Key Panel RF Remote Controller](#)
- [2 Product Information](#)
- [3 Product Usage Instructions](#)
- [4 Frequently Asked Questions](#)
- [5 Features](#)
- [6 Technical Parameters](#)
- [7 Mechanical Structures and Installations](#)
- [8 Key function](#)
- [9 Match Remote Control](#)
- [10 Safety information](#)
- [11 Documents / Resources](#)
  - [11.1 References](#)
- [12 Related Posts](#)

## **T LED**

### **T LED HN2K 4 Key Panel RF Remote Controller**



## Product Information

### Specifications

- Model: HN2K
- Dimensions:
  - Length: 86.00 mm
  - Width: 14.00 mm
  - Height: 12.00 mm
  - Baseplate: 50.00 mm
- Features:
  - Apply to single color
  - Each remote can match one or more receiver
  - CR2032 battery powered
  - Removable and easy to stick anywhere or mount on a wall using a panel base
- Technical Parameters:
  - Input and Output: RF(2.4GHz)
  - Output signal: 3VDC(CR2032)
  - Working voltage: 5mA
  - Standby current: 2A
  - Standby time: 2 years
  - Remote distance: 30m (Barrier-free space)
- Environment:
  - Operation temperature: -30°C to +55°C
  - IP rating: IP20
- Safety and EMC:
  - EMC standard: ETSI EN 301 489-1 V2.2.3, ETSI EN 301 489-17 V3.2.4
  - Safety standard: EN 62368-1:2020+A11:2020
  - Radio Equipment: ETSI EN 300 328 V2.2.2, CE, EMC, LVD, REDCertification
- Warranty: 3 years
- Weight:
  - Net weight: 0.057kg
  - Gross weight: 0.075kg

## Product Usage Instructions

### Replace Battery:

Before the first use, remove the protective film on the battery.

### Installation Diagram:

### To fix the panel:

Two options are offered for selection:

1. Fix it on the wall with two screws.
2. Adhere it to the wall with a plaster.

### **Key Functions:**

#### **Zone1:**

- Zone1 on / Zone1 off
- Zone2 on / Zone2 off
- Zone 1-2 on: Short press to turn on zone light, long press (1-6s) to increase brightness continuously.
- Zone 1-2 off: Short press to turn off zone light, long press (1-6s) to decrease brightness continuously.

### **Match Remote Control (Two Match Ways):**

#### **Option 1:**

##### **Match:**

- Short press match key, immediately press on/off key on the remote. The LED indicator fast flashes a few times means match is successful.

##### **Delete:**

- Press and hold match key for 5s to delete all matches. The LED indicator fast flashes a few times means all matched remotes were deleted.

### **Frequently Asked Questions**

**Q: What should I do if there is no response from the receiver?**

**A:** Please re-match the remote control with the receiver.

Model No.: HN2K

2 Zone Dimming

### **Features**

- Apply to single color
- Each remote can match one or more receiver.
- CR2032 battery powered.
- Removeable and stick anywhere easily, or mount on wall use panel base.

### **Technical Parameters**

Input and Output	
Output signal	RF(2.4GHz)
Working voltage	3VDC(CR2032)
Working current	5mA
Standby current	2μA
Standby time	2 years
Remote distance	30m(Barrier-free space)

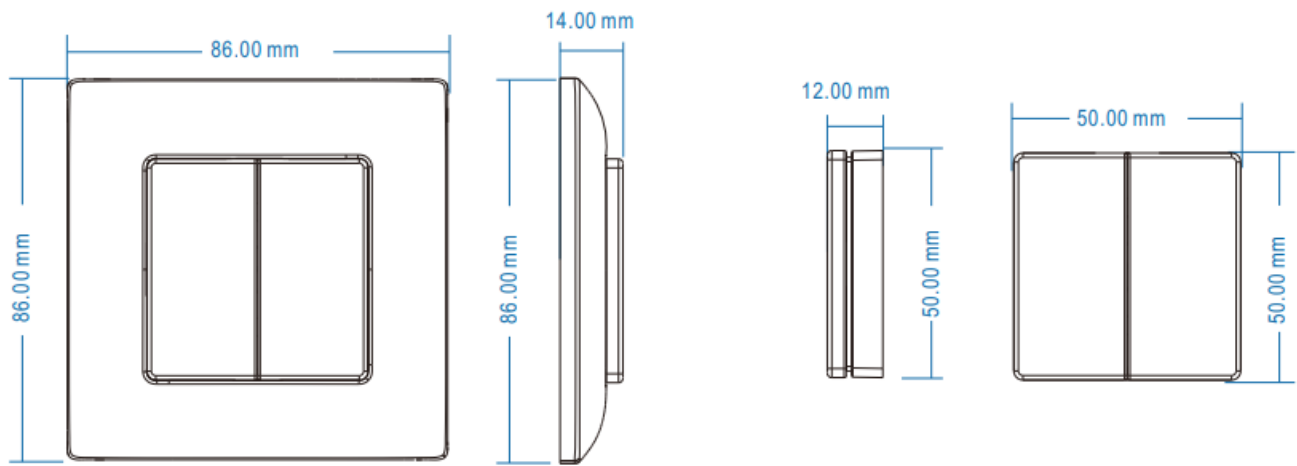
Environment	
Operation temperature	Ta: -30 OC ~ +55 OC
IP rating	IP20

Safety and EMC	
EMC standard (EMC)	ETSI EN 301 489-1 V2.2.3 ETSI EN 301 489-17 V3.2.4
Safety standard(LVD)	EN 62368-1:2020+A11:2020
Radio Equipment(RED)	ETSI EN 300 328 V2.2.2
Certification	CE,EMC,LVD,RED

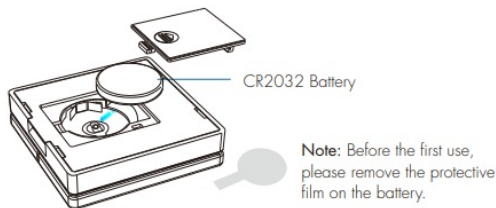
Warranty	
Warranty	3 years

Weight	
Net weight	0.057kg
Gross weight	0.075kg

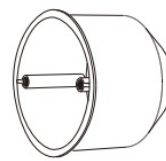
## Mechanical Structures and Installations



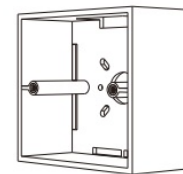
Replace battery:



Typical base as below:

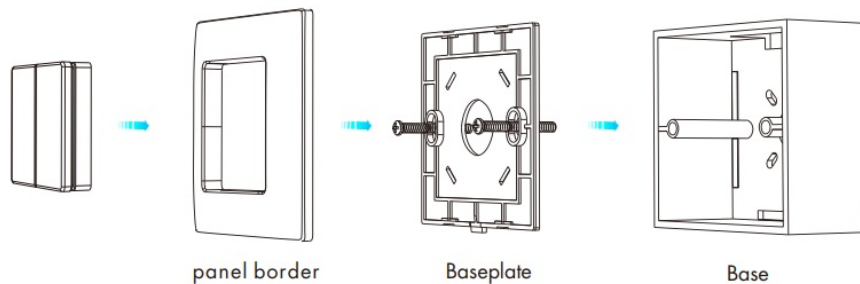


European style



86 size

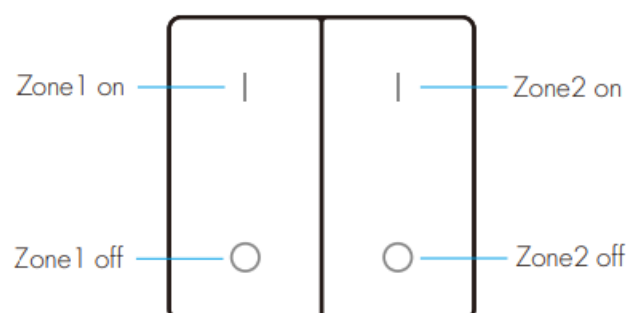
Installation diagram:



To fix the panel, two options are offered for selection:

- **Option 1:** fix it on the wall with two screws.
- **Option 2:** adhere it to the wall with paster.

## Key function



**Zone 1 2 on:** Short press turn on zone light, long press 1-6s to increase brightness continuously.

**Zone 1-2 off:** Short press turn off zone light, long press 1-6s to decrease brightness continuously.

## Match Remote Control

(two match ways)

End user can choose the suitable match/delete ways. Two options are offered for selection:

### Use the controller's Match key

#### Match:

Short press match key, immediately press on/off key on the remote.  
The LED indicator fast flash a few times means match is successful.

#### Delete:

Press and hold match key for 5s to delete all match, The LED indicator fast flash a few times means all matched remotes were deleted.

### Use Power Restart

#### Match:

Switch off the power, then switch on power, repeat again.  
Immediately short press on/off key 3 times on the remote.  
The light blinks 3 times means match is successful.

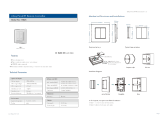
#### Delete:

Switch off the power, then switch on power, repeat again.  
Immediately short press on/off key 5 times on the remote.  
The light blinks 5 times means all matched remotes were deleted.

## Safety information

1. Read all instructions carefully before you begin this installation.
2. When installing battery, pay attention to the battery positive and negative polarity.  
A long time without the remote control, remove the battery.  
When remote distance becomes smaller and insensitive, replace the battery.
3. If no response from the receiver, please re-match the remote.
4. Gently handle remote, beware of falling.
5. For indoor and dry location use only.

## Documents / Resources

	<p><b><a href="#">T LED HN2K 4 Key Panel RF Remote Controller</a></b> [pdf] Owner's Manual HN2K, HN2K 4 Key Panel RF Remote Controller, HN2K, 4 Key Panel RF Remote Controller, Key Panel RF Remote Controller, Panel RF Remote Controller, RF Remote Controller, Remote Controller, Controller</p>
---	---

## References

- [User Manual](#)

## **Manuals+. Privacy Policy**

This website is an independent publication and is neither affiliated with nor endorsed by any of the trademark owners. The "Bluetooth®" word mark and logos are registered trademarks owned by Bluetooth SIG, Inc. The "Wi-Fi®" word mark and logos are registered trademarks owned by the Wi-Fi Alliance. Any use of these marks on this website does not imply any affiliation with or endorsement.