

**T.I.P.**  
SPF 180 Pool  
Filter System



# T I P SPF 180 Pool Filter System User Manual

[Home](#) » [T I P](#) » T I P SPF 180 Pool Filter System User Manual 

## Contents

- 1 TIP SPF 180 Pool Filter System
- 2 Specifications
- 3 General safety information
- 4 Technical data
- 5 Position and function
- 6 Range of use
- 7 Installation
- 8 Electrical connection
- 9 Putting into operation
- 10 Maintenance and care
- 11 Troubleshooting/tips
- 12 Appendix
- 13 FAQs
- 14 Documents / Resources
  - 14.1 References

**T.I.P.**

**TIP SPF 180 Pool Filter System**



## Specifications

- **Model:** SPF 180 | SPF 250 F | SPF 370 F
- **Product Type:** Swimming pool filter set
- **Motor Model ID:** CR1G225
- **Poles:** 2
- **Rated Power:** 0.15 kW
- **Rated Input Frequency:** 50 Hz
- **Rated Voltage:** 230 V
- **Rated Speed:** 2850 rpm
- **Phases:** 1

## General safety information

Please read through these operating instructions carefully and make yourself conversant with the control elements and the proper use of this product. We shall not be liable in the case of damage caused as a result of the non-observance of instructions and provisions of the present operating instructions. Any damage caused as a result of the non-observance of the instructions and regulations contained in the present operating instructions shall not be covered by the warranty terms. Please keep these operating instructions in a safe place and hand them on together with the device should you ever dispose of it. With the contents of this manual, unfamiliar people should not use this device. The pump must not be used by children. The pump may be used by persons with reduced physical, sensory, or mental capabilities or lack of experience and/or knowledge if they have been supervised or instructed in the safe use of the equipment and have understood the resulting hazards. Children are not allowed to play with the device. Keep the appliance and its cord out of reach of children. The pump must not be used when people or animals are in the water. The pump must be supplied through a residual current device (RCD) having a rated residual operating current not exceeding 30mA. If the supply cord is damaged, it must be replaced by the manufacturer, its service agent, or similarly qualified persons to avoid a hazard. Notes and instructions with the following symbols require particular attention:

- Any non-observance of these instructions involves the danger of bodily harm to people and/or damage to property.
- Any non-observance of this instruction bears the risk of an electrical shock,, which may cause damage to persons or property.

Check the product for transport damage. In case of damage, the retailer must immediately – be immediately informed – but not later than the date of purchase, within 8 days.

## Technical data

Model	SPF 180	SPF 250 F	SPF 370 F
Mains voltage/frequency	220-240 V~ / 50 Hz	220-240 V~ / 50 Hz	220-240 V~ / 50 Hz
Performance P1 / P2	250 Watt / 180 Watt	400 Watt / 250 Watt	550 Watt / 370 Watt
Protection class	IPX5	IPX5	IPX5
Flow rate through a sand filter	4.500 l/h	6.000 l/h	7.000 l/h
Max. Flowrate pump ( $Q_{\max}$ ) <sup>1)</sup>	7.900 l/h	10.000 l/h	13.200 l/h
Max. pressure	0,6 bar	1,0 bar	1,2 bar
Suction port/pressure port	45,48 mm (1½“ female)	45,48 mm (1½“ female)	45,48 mm (1½“ female)
Hose connector	32 mm (1¼“), 38 mm (1½“)	32 mm (1¼“), 38 mm (1½“)	32 mm (1¼“), 38 mm (1½“)
Max. fluid temperature ( $T_{\max}$ )	40° C	40° C	40° C
Min. fluid temperature ( $T_{\min}$ )	5° C	5° C	5° C
Grain size of quartz sand	0,5 to 0,8 mm 0,7 to 1,2 mm	0,5 to 0,8 mm und 0,7 to 1,2 mm	0,5 to 0,8 mm 0,7 to 1,2 mm
Sand filling quantity <sup>2)</sup>	13 kg	13 kg	25 kg
Length of power cord	1,9 m	1,9 m	1,9 m
Type of power cord	H07RN-F 3 G 1,0 mm <sup>2</sup>	H07RN-F 3 G 1,0 mm <sup>2</sup>	H07RN-F 3 G 1,0 mm <sup>2</sup>
Weight of the pump	4 kg	5 kg	5,5 kg
Dimension of filter set	50 x 35 x 64 cm	50 x 50 x 64 cm	50 x 50 x 68 cm
Total weight of the filter set	8 kg	10,8 kg	12,8 kg
Article No.	30307	30308	30309

1. The values were determined with free, unreduced in- and outlet.

2. Quartz sand is not included

## Position and function

The pool filter set should be placed on a level concrete slab, very firm ground, or equivalent, approximately 2 to 3 m from the pool edge. Ensure that the ground will not subside, preventing any strain from the attached plumbing. Protect the set from splash water and humidity. It should not be placed in an earth hole or directly on the ground. Make sure the inlet of the pump is placed at least 30 cm below the water level of the swimming pool. Please note the pump shall be placed in a well-ventilated and dry location, which is protected against floating and splash water and easy to reach for maintenance. The pump shall not be placed into a too small chamber or compartment to avoid overheating.

- Make sure that all electric parts of the pump do not come into contact with water. Dangerous!
- The pump is not suited to discharge saltwater, feces, inflammable, etching, explosive, or other hazardous liquids. Please observe the max. The temperature of the liquids to be discharged is stated in the technical data.

## Function of the sand filter set

Incoming water from the piping system is automatically directed by the 4-position valve to the top of the filter bed. As the water is pumped through the filter sand, dirt and debris are trapped by the filter bed and filtered out. The filtered water is returned from the bottom of the filter tank, through the 4-position valve, and back through the piping system.

## Range of use

- This swimming pool filter set is for cleaning swimming pool water. This device is for private use and not for industrial or commercial use.
- Do not store swimming pool disinfectant near the filter sets.
- Prevent chemicals and vapors come with the filter set to touch and spoiling the material.

## Scope of delivery and optional accessories

This product includes:

- A sand filter tank including base plate, 4-way valve, one pump, two bags with connection and installation accessories (see chapter 6 “Installation”), and an instruction manual.
- Check the contents for completeness. If possible, keep the packaging until the end of the warranty period. Dispose of packaging materials in an environmentally sound manner.
- Depending on the application, additional accessories may be required (see chapter “How to order spare parts”).

## Installation

### General Installation Instructions

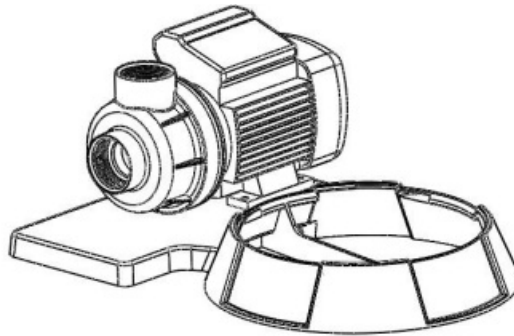
- **DANGER:** During the entire process of installation, the device must not be connected to the electrical mains.
- **WARNING:** The pump and the entire port system must be protected against frost.

All connection lines have to be perfectly tight since leaking lines may affect the performance of the pump and cause considerable damage. If required, please use a suitable sealant to make the installation airtight. Avoid when tightening screw excessive force that may cause damage. When laying the connection pipes, you should make sure that the pump is not exposed to any form of weight, vibration, or tension. Moreover, the connection lines must not contain any kinks or adverse slopes. Please observe the illustrations, too, which are contained as an attachment at the end of the present operating instructions. The numeric and other details included in brackets

below refer to these illustrations. Please observe the graphic figures in this manual. The numbers and other indications in brackets refer to the following graphic figures in this text.

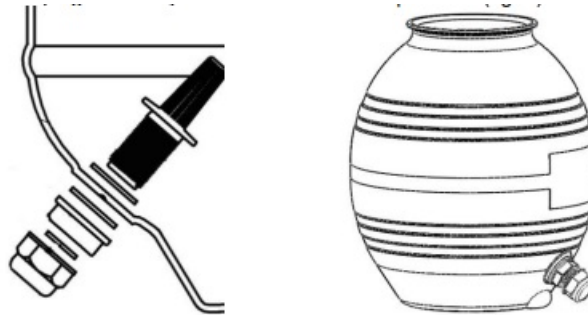
## Installation of a sand filter

1.



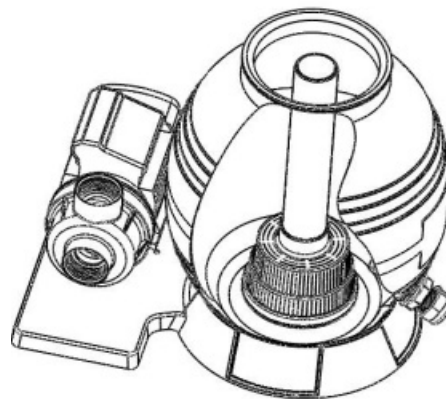
Mount the pump to the sand filter support by using bolts and nuts.

2.



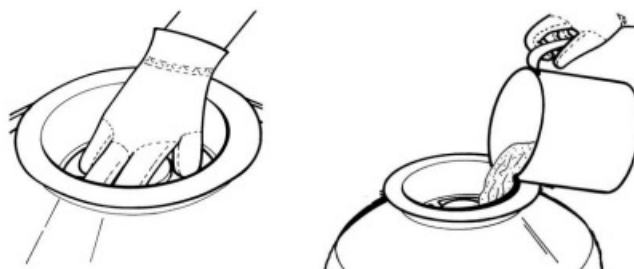
Install the drain plug assembly in the sand tank as pictures below.

3.



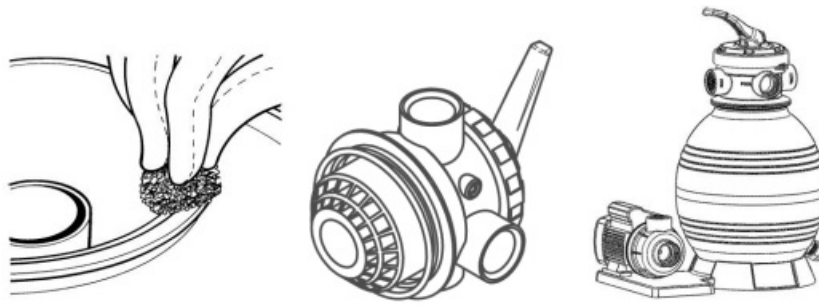
Press and turn the sand tank to mount it to the sand filter support in the correct direction.

4.



Insert the tube with filter basket inside the tank as above picture, then place the funnel on the tank's mouth and pour the quartz sand into the tank (sand weight 13 kg). Please ensure no sand is falling into the tube.

5.



Remove the funnel and clean the edge of the container opening carefully, and residues. To facilitate the start-up, it is recommended to fill the sand filter tank to  $\frac{3}{4}$  with water. Then mount the 4-way valve and the filter gasket. The connection is made with a clamping ring. The clamping ring is screwed to the clamping ring screw and clamping ring nut.

6.



Connect the sand tank to the pump with a hose, hose clamps, and hose adaptors.

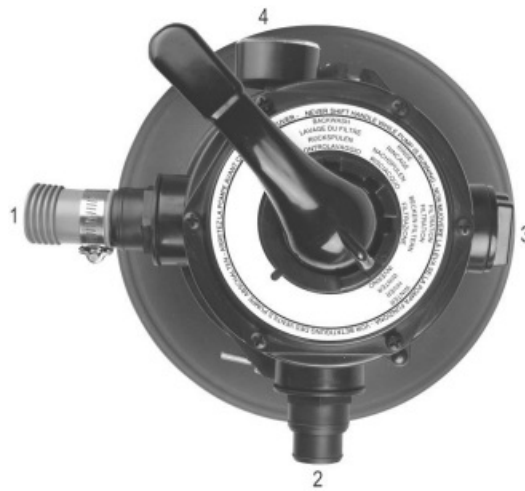
### **Please carefully note the installation..**

1. Make sure the filter is working under pressure, and using a pressure control valve when the system uses a booster pump.
2. If the pump position is lower than the water level as recommended, it requires installing an isolation valve. It could stop the water from returning or general care and maintenance.
3. Reducing the number of connection adapters and hose connecting bends as little as possible. Decreasing the water flow scrub, it could reach the maximum effectiveness.
4. Ensure solvents are not excessively applied to fittings, as this could run into the o-ring and cause damage to the seals.
5. Do not over-tighten fittings or adapters.

### **Installation of the pump inlet and outlet hose**

The pump is developed according to the latest technology. These preventive actions during installation will ensure a trouble-free operation for many years. Use a pump inlet hose with the same diameter as the suction port of the pump, at least 40 mm (1½" female). The weight of the plumbing and fittings is to be independently supported and not carried by the pump. The pump inlet must be installed under the water level of the pool, because the pump works with an intake water supply. For easier maintenance and care, we recommend the installation of an isolation valve. The advantage is that by closing the isolation valve, no water runs out of the pool.

1.



Inlet from the pump (marked “pump”)

2. outlet to the swimming pool (marked “pool”) for normal filter operation,
3. outlet for wastewater (marked „waste”) for the backwash pressure gauge

Make sure there is sufficient water in the sand filter tank before priming the pump. If the pump does not prime, please observe the notes in the troubleshooting section. Make sure all inlet and outlet valves are open before priming the pump. Otherwise, this could cause severe damage to the pump.

### Fixed installation

For the fixed installation of the electrical connection, make sure the plug can be easily reached and is visible. For a fixed installation, the pump should be placed on a solid, horizontal surface.

#### Please note:

- If the filter is installed below the water surface, a shut-off valve should be installed. This prevents unnecessary water flow during maintenance.

### Electrical connection

The unit is equipped with a mains connection cable and a mains plug. It must only be replaced by qualified staff to avoid any danger. Please do not use the mains connection cable to carry the pump, and do not use this cable to pull off the plug from the socket, either. Protect the mains connection cable and mains plug from heat, oil, or sharp edges. Defective power cords must be replaced immediately.

- DANGER: The values stated in the technical details have to correspond to the mains voltage.
- DANGER: The person responsible for the installation has to make sure that the electrical connection is earthed in compliance with the applicable standards.
- DANGER: The electrical connection has to be equipped with a highly sensitive residual current circuit-breaker (FI switch):  $\Delta = 30 \text{ mA}$  (DIN VDE 0100-739).
- DANGER: If extension cables are used, their cross-section must not be smaller than that of rubber-sheathed cables of the H07RN-F (3 x 1.0 mm<sup>2</sup>) short code. The mains socket and the plug-and-socket elements have to be in splash-waterproof design.
- DANGER: The electrical installation must be done by the safety regulations for swimming pools and in particular with standard HD 60364-7-702 and other local specifications regulations.

### Putting into operation

1. Please inspect the pump visually before each use. This applies in particular to the mains connection line and the mains plug. Make sure that all screws are firmly tightened, and verify the perfect condition of all connections. A damaged pump must not be used. In any case of damage, the pump has to be inspected by qualified service staff.
2. Each time the pump is put into operation, please make sure that the pump is set up securely and firmly standing.
3. To put the unit into operation, please plug the mains plug into a 230V AC socket. If the water level has reached or exceeded the cut-in level, the pump will start to run immediately.
4. To stop the operation of the pump, please pull the mains plug out of the socket.
5. The electrical pumps of the T.I.P. SPF series are equipped with an integrated thermal motor protection feature. In the case of overload, the motor will switch off independently and on again after cooling down. For possible causes and their elimination, please refer to the "Maintenance and troubleshooting" section 8.

## **WARNING**

- **WARNING:** For the first operation, it is recommended to fill the sand filter tank with water.
- **WARNING:** Avoid any dry-running operation of the pump without suction of water. This could cause an overheating of the pump and severe damage to the device. In addition to this, there then very hot water in the system, which can cause burning injuries and scalding. In case of an overheated pump, pull out the power cord and let the system cool down. The floating ring seals can be damaged if the pump is running dry and should be replaced if this happens.
- **WARNING:** Do not expose the pump to rain or humidity. Avoid any dripping connectors. Do not place the pump in a wet or humid environment. Make sure the pump and the electrical plugs are located in an area that is secured against flooding.
- **WARNING:** The pump must not be operated if the inlet valve is closed.
- **WARNING:** It is forbidden to touch the hands to the openings of the pump if the device is connected to the power supply.

## **Please note that the first operation..**

1. Press the top moun4-positionon valve handle down and rotate to the backwash position.
2. Prime and start the pump according to these instructions.
3. Once water flow is steady out of he waste line, run the pump for at least 2 minutes. The initial backwashing of the filter is recommended to remove any impurities or fine sand particles in the sand media.
4. Turn the pump off and set the valve to the rinse position. Start the pump and operate until the water in the sight glass is clear – about ½ to 1 minute. Turn the pump off, set the valve to the FILTER position, and restart pthe ump. Your filter is now operating in the normal filter mode, filtering particles from the pool water..

## **WARNING**

- To prevent unnecessary strain on other piping systems and valves, always shut off the pump before switching the filter control 4-position valve positions.
- All inlet and outlet valves must be open when starting the system. Otherwise, this can cause severe damage to the pump.



- High suction lift or long suction hoses require additional time and reduce the performance of the pump. If the pump does not prime, repeat steps 1 and 2.

**Note:** Regular maintenance of the pump and sand filter extends the life cycle of the pump and increases its efficiency.

If the water level is to be dropped in the sand filter tank, you should fill up the tank again before recommissioning.

1. Remove the translucent lid and fill the filter tank with water.
2. Replace the lid, ensuring the o-ring is correctly located, and start the pump.

After you have done the, allow a few minutes (maximum) for the pump to start delivering water.

### **Functions of the 4-position valve of the sand filter**

- **Filter** – Set the valve in the position filter for normal filter operation.
- **Backwash:** for cleaning the filter. When the filter pressure gauge rises 0.5 bar above start-up, a cleaning of the filter must be done: Stop the pump, set the valve to backwash. Start the pump and backwash for approximately 2 minutes or less, depending on dirt accumulation. Proceed to rinse.
- **Rinse** After backwashing, with the pump off, set the valve to rinse. Start the pump and operate for about 1 minute. This ensures that all dirty water from backwashing is rinsed out of the filter to waste, preventing possible return to the pool. Stop the pump, set the valve to FILTER, and start the pump for normal filtering.
- **Winter position** – All valves are opened. In this position, the pressure on the seals is relieved.

### **Maintenance and care**

Observing the conditions of use and the ranges of application of the present device will reduce the risk of possible operational malfunction and contribute to the lifetime of your unit. Sand and other abrasive matters contained in the liquid discharged will speed up the process of wearing and tearing and accelerate the drop in performance. The user must ensure that maintenance is done by qualified persons who have carefully read all instructions for installation and maintenance. In case the set is not used for a longer period, the pump and filter tank must be drained. Frozen water inside the pump and filter tank can cause severe damage. Store the pump in a dry and frost-proof location. If the pump is operated again after a longer break, please ensure all sealing and O-Rings are in good condition. Replace any defects or damaged sealings. Check that the motor shaft is moving freely before each new operation. Check and clean the tube with filter basket (fig. 8, No. 5) in the sand filter tank in regular intervals.

1. Remove the lid with 4 the4-posit4-position take out the tube with the filter basket.
2. Clean the filter basket with clear water.
3. Do the assembly in reverse order. Check the sealing of the lid. Replace damaged seals immediately.
4. Insert the tube with the filter basket (fig. 8, No. 5).
5. Fill the sand filter tank again.
6. Place the o-ring correctly.
7. Pull the lid by hand.
8. Switch on the pump again.

**A regular check of the mechanical and electrical parts is recommended**

1. The accurate and right connection of adapters, hose and pipes and secured tightness of all screws.
2. The correct condition of all electric connections and power cords.
3. The vibration of the pump. In case of excessively high vibration, stop the pump immediately and contact your service partner or the manufacturer.

**DANGER:** Before carrying out any maintenance work, the pump must be separated from the electrical mains. If you fail to separate the unit from mains, there is a risk of an inadvertent start of the pump.

**WARNING:** We decline any liability for damage caused by inappropriate repair attempts. Any damage caused by inappropriate repair attempts will void all warranty claims.

## Troubleshooting/tips

In the case of malfunction, you should first of all check whether it was caused by an operating error or some other reason which cannot be attributed to a defect of the device, for instance, a power failure. The list below shows some possible malfunctions of the device, possible causes, and tips on their elimination. All the measures referred to may only be carried out with the pump being separated from the electrical mains. If you feel unable to eliminate any of these malfunctions, please contact the customer service department or your point of sale. Any repair beyond the scope specified below must only be performed by qualified staff. Please bear in mind that all warranty claims will become void in the case of damage caused by inappropriate repair attempts, and that we decline any liability for any ensuing damage.

MALFUNCTION	POSSIBLE CAUSE	ELIMINATION
1. The pump is not discharging any liquid, and the motor is not running.	1. No current.	<p>1. Please use a device complying with GS (German technical supervisory authority) to check for the presence of voltage (safety information to be observed!). Please verify the correct position of the plug. Separate the pump from the electrical 2mains, allow the system to cool down, and identify the cause.</p> <p>Please contact the customer service department. Department.</p>
	2. The thermal motor protection feature has triggered.	
	3. The capacitor is defective.	

<p>2. The motor is running, but the pump is not discharging any liquid.</p>	<p>1. The pump housing is not filled with liquid.</p> <p>2. Air penetrates the pump body</p> <p>3. Check valve (non-return valve), if present, is blocked or defective.</p>	<p>1. Ensure the water level in the pool is above the suction point of the pump. Make sure the strainer is free of dirt</p> <p>2. Check to make sure that:</p> <p>a. The connection points of the intake line are tight;</p> <p>b. No siphons (i.e., permanently liquid-filled loops), kinks, counter-slopes, or narrow spots are present along the intake lines.</p> <p>3. Eliminate blocking of the check valve (non-return valve) or replace, if damaged. Clean the insert of the pump and check for any blockage of the impeller</p>
MALFUNCTION	MALFUNCTION	ELIMINATION
<p>3. The pump stops after a short time of operation because the thermal motor protection feature has triggered.</p>	<p>1. The electrical supply does not correspond to the information given on the type plate</p> <p>2. Pump or intake openings are blocked by solids.</p> <p>3. The temperature of the liquid is too high.</p> <p>4. The pump is running dry.</p>	<p>1. Please use a device complying with GS (German technical supervisory authority) to check for the presence of voltage (safety information to be observed!).</p> <p>2. Remove possible congestion.</p> <p>3. Make sure that the temperature of the liquid being pumped does not exceed the maximum. Admissible value.</p> <p>4. Eliminate causes of dry-running.</p>
<p>4. Low current</p>	<p>1. Dirty filter</p> <p>2. Dirt in the filter basket of the sand filter</p> <p>3. Blockage in the pipe</p>	<p>1. Rinse or clean the filter</p> <p>2. Clean the filter basket of the tube</p> <p>3. Check the pipes. Avoid any bending of hoses. Flush with sufficient water in case of need.</p>

5. Noise in the pump during the operation	1. Defect bearing  2. Air penetrates the intake line. 3. Blockage during aspiration 4. Fault in the impeller  5. Disturbance while sucking	1. Contact your local service partner or the manufacturer  2. See section 2 of this table  3. Check and clean the suction hose  4. Contact your local service partner or the manufacturer  5. Improve the suction inlet. Make sure the suction inlet is under the water level of the swimming pool. Reduce the numbers of screws; assemble a pipe with a larger diameter.
---	--	---

### Warranty

The present device was manufactured and inspected according to the latest methods. The seller warrants for faultless in material and workmanship under the legal regulations of the country in which the device was purchased. The warranty period begins with the day of the purchase and is subject to the provisions below: Within the period of warranty, all defects that are attributable to defective materials or manufacturing will be eliminated free of charge. Any complaints are to be reported immediately upon their detection. The warranty claim becomes void in the case of interventions undertaken by the purchaser or by third parties. Damage resulting from improper handling or operation, incorrect setting-up or storage, inappropriate connection or installation, or Acts of God or other external influences is excluded from warranty. Parts that are subject to wear and tear are excluded from warranty. All parts were manufactured using maximum care and high-quality materials and are designed for a long lifecycle. It should be understood, however, that the wear and tear depends on the kind of use, the intensity of use, the internals of maintenance. Complying with the installation and maintenance information contained in the present operating instructions will therefore considerably contribute to a long lifecycle of these wearing parts. In case of complaints, we reserve the option of repairing or replacing the defective parts or replacing the entire device. Replaced parts will pass into our property. Claims for liquidated damages are excluded unless they are caused by willful acts or negligence on the part of the manufacturer. The warranty does not provide for any claims beyond those referred to above. The warranty claim has to be evidenced by the purchaser in the form of the submission of the sales receipt. The present warranty commitment is lid to the country in which the device was purchased.

### Please note

1. Should your device fail to function properly, please verify first whether an operating error or another cause is present that cannot be attributed to a defect of the device.
2. In case you have to take or send in your defective device for repair, please be sure to enclose the following documents:
  - Sales receipt (sales slip).
  - A description of the occurring defect (a description as accurate as possible will expedite the repair work).
3. In case you have to take or send in your defective device for repair, please remove any attached parts that do not belong to the original condition of the device. If any attached parts of this kind should be missing upon the return of the device, we shall not be liable for them.

### How to order spare parts

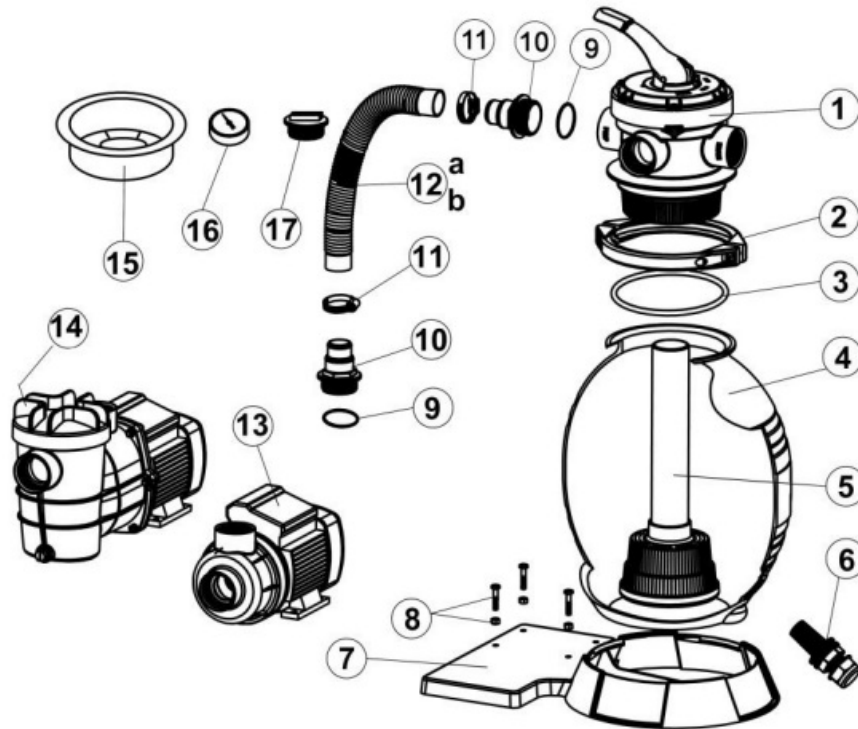
The fastest, simplest, and cheapest way of ordering spare parts is through the internet. On our [www.tip-pumpen.de](http://www.tip-pumpen.de) website, you will find a convenient spare part shop where you can order spare parts with just a couple of clicks. In addition, this is also the place where we publish comprehensive information and valuable tips on our products and accessories, introduce new devices, and present current trends and innovations in the range of

pump technology. Original spare parts accessories, which are authorized by the manufacturer, ensure a high degree of safety. The manufacturer of the pump is not liable for any damage or injuries that are caused by the usage of unauthorized spare parts and accessories.

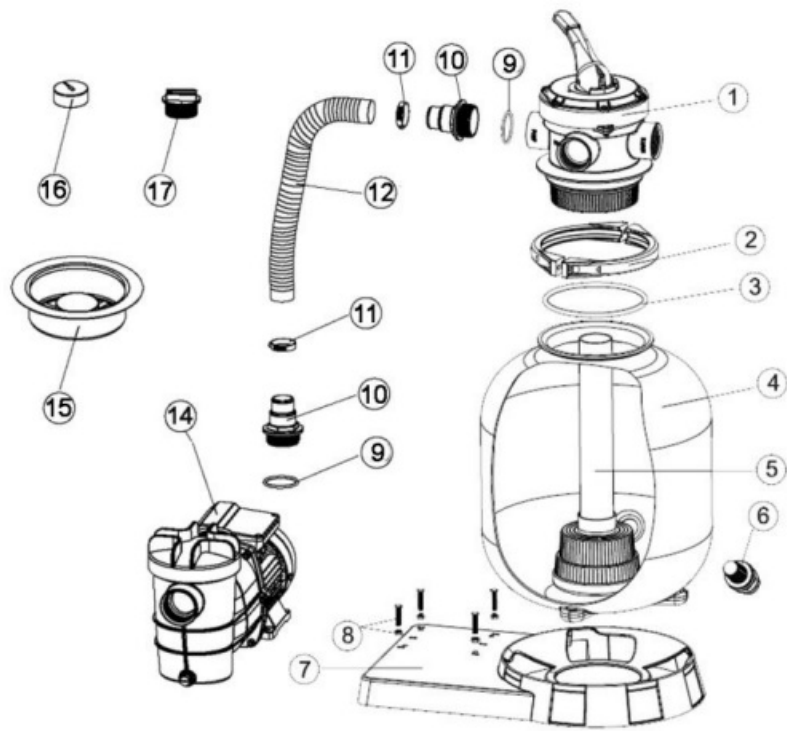
## Service

In the case of warranty claims or malfunctions, please contact your point of sale. A current operating manual is available as required as a PDF file via e-mail: [service@tip-pumpen.de](mailto:service@tip-pumpen.de).

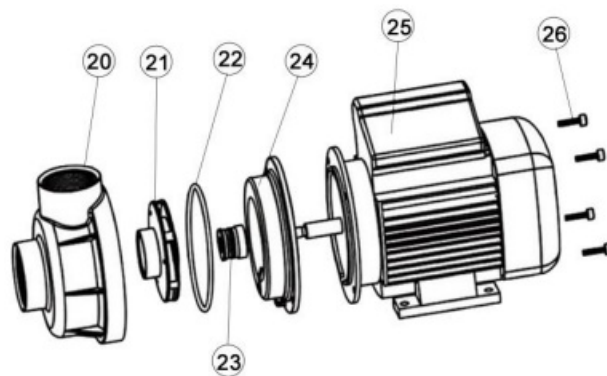
## Appendix



POSITION	ITEM NUMBER	DESCRIPTION SPF 180 AND SPF 250 F	QUANTITY
1	72140	4-Way-Valve	1
2	72141	Clamping ring	1
3	72142	O-Ring	1
4	72143	Sand filter container	1
5	72144	Exhaust pipe with filter basket	1
6	72145	Drain filter	1
7	72146	Baseplate	1
8	72147	Screw M6 * 25 and nuts M6	4
9	72148	O-Ring	5
10	72149	Hose connection	5
11	72150	Hose clamp	2
12	72151	32 mm (1¼ ") * 35 cm connecting hose	1
13	72152	Pump SPF 180 220~240VV 50Hz) completely	1
14	73052	Pump SPF 250 F (220~240V 50Hz) completely	1
15	72153	Hopper	1
16	72154	Manometer	1
17	72155	Sealing plug with O-ring 47.8 mm (1½ "external thread)	1

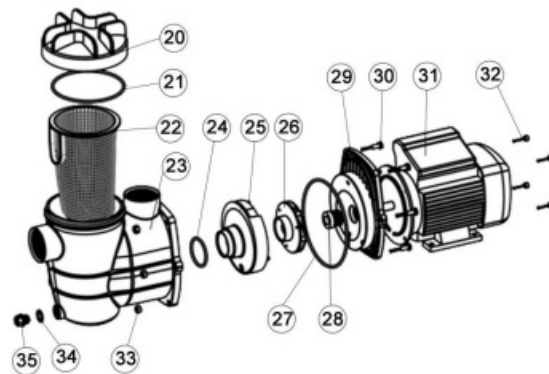


POSITION	ITEM NUMBER	DESCRIPTION SPF 370 F	QUANTITY
1	72140	4-Way-Valve	1
2	72141	Clamping ring	1
3	72142	O-Ring	1
4	73053	Sand filter container	1
5	72144	Exhaust pipe with filter basket	1
6	72145	Drain filter	1
7	73054	Baseplate	1
8	72147	Screw M6 * 25 and nuts M6	4
9	72148	O-Ring	5
10	72149	Hose connection	5
11	72150	Hose clamp	2
12	72151	32 mm (1¼ ") * 35 cm connecting hose	1
14	73055	Pump SPF 370 F (220~240V 50Hz) completely	1
15	72153	Hopper	1
16	72154	Manometer	1
17	72155	Sealing plug with O-ring 47.8 mm (1½ "external thread)	1





POSITION	ITEM NUMBER		PUMP SPF 180	QUANTITY
20	72156	Pump housing		1
21	72157	Impeller		1
22	72158	O-Ring		1
23	72159	Mechanical seal		1
24	72160	Cover		1
25	72161	Motor SPF 180		1
26	72162	M5 x 20		4



POSITIO N	ITEM NUMBER	PUMP SPF 250 F AND SPF 370 F	QUANTIT Y
20	73056	Remove cover	1
21	73057	O-Ring	1
22	73058	Filter	1
23	73059	Pump housing	1
24	73060	O-Ring	1
25	73061	Diffuser	1
26a	73062	Impeller SPF 250 F	1
26b	73063	Impeller SPF 370 F	1
27	73064	O-Ring	1
28	73065	Mechanical seal	1
29	73066	Cover	1
30	73067	M6 x 25	6
31a	73068	Motor SPF 250 F	1
31b	73069	Motor SPF 370 F	1
32	73070	M5 x 14	4
33	73071	Nut M6	6
34	73072	O-Ring	1
35	73073	Drain screw M6	1

**T.I.P. Technische Industrie Produkte GmbH Siemensstraße 17**

D-74915 Waibstadt / Germany

**Tel.:** +49 (0) 7263 9125-0

**Fax:** +49 (0) 7263 9125-85

**Webseite:** <http://www.tip-pumpen.de>

**FAQs**

Q: How often should I clean the filter cartridges?

A: It is recommended to clean or replace the filter cartridges every 2-4 weeks, depending on usage and water quality.


Q: Can this filter system be used for saltwater pools?

A: Yes, this filter system is suitable for use in saltwater pools. Ensure proper maintenance to prevent corrosion.

Q: What should I do if the motor of the filter system stops working?

A: Check the power supply, connections, and motor for any issues. If the problem persists, contact customer support for assistance.

Documents / Resources

	<p><a href="#">T I P SPF 180 Pool Filter System</a> [pdf] User Manual</p> <p>SPF 180 Pool Filter System, SPF 180, Pool Filter System, Filter System, System</p>
---	---

References

- ☐ [Das neue Batteriegesetz \(BattG\)](#)
- ☐ [Startseite - Das neue Elektroggesetz \(ElektroG, WEEE\) 2025](#)
- ☐ [User Manual](#)

[Manuals+](#), [Privacy Policy](#)

This website is an independent publication and is neither affiliated with nor endorsed by any of the trademark owners. The "Bluetooth®" word mark and logos are registered trademarks owned by Bluetooth SIG, Inc. The "Wi-Fi®" word mark and logos are registered trademarks owned by the Wi-Fi Alliance. Any use of these marks on this website does not imply any affiliation with or endorsement.