



## T I P 15000 Pool Filter System Instruction Manual

[Home](#) » [T I P](#) » T I P 15000 Pool Filter System Instruction Manual 

### T I P 15000 Pool Filter System



## Contents

- 1 Dear customer
- 2 General safety information
- 3 Technical data
- 4 Range of use
- 5 Scope of delivery and optional accessories
- 6 Position and function
- 7 Installation
- 8 Electrical connection
- 9 Putting into operation
- 10 Maintenance and care
- 11 Troubleshooting / tips
- 12 Warranty
- 13 How to order spare parts
- 14 Service
- 15 CUSTOMER SUPPORT
- 16 Documents / Resources
  - 16.1 References

## Dear customer



Strictly ensure that you have read the use instructions before placing the pump in service!

Congratulation for buying your new device from T.I.P.!  
We hope you will enjoy your new device!

## General safety information

Please read through these operating instructions carefully and make yourself conversant with the control elements and the proper use of this product. We shall not be liable in the case of damage caused as a result of the non-observance of instructions and provisions of the present operating instructions. Any damage caused as a result of the non-observance of the instructions and regulations contained in the present operating instructions shall not be covered by the warranty terms. Please keep these operating instructions in a safe place and hand them on together with the device should you ever dispose of it.

With the contents of this manual unfamiliar people should not use this device.

The device must not be used by children. Cleaning and user maintenance must not be carried out by children and the appliance must always be disconnected from the mains before assembly, disassembly or cleaning. The device may be used by persons with reduced physical, sensory or mental capabilities or lack of experience and / or knowledge if they have been supervised or instructed in the safe use of the equipment and have understood the resulting hazards. Children are not allowed to play with the device. Keep the appliance and its cord out of reach of children.

The device must not be used when people or animals are in the water.

The device must be supplied through a residual current device (RCD) having a rated residual operating current not exceeding 30mA.

The mains power connection of this device cannot be replaced. In case the line is damaged, the device must be

scrapped.

Notes and instructions with the following symbols require particular attention:



Any non-observance of these instructions involves the danger of bodily harm to people and/or damage to property.



Any non-observance of this instruction bears the risk of an electrical shock which may cause damage to persons or property.

## Technical data

Model	Chlor Comfort 15000
Mains voltage / frequency	230 V~ / 50 Hz
Performance	180 Watt (P1), 110 Watt (P2)
Protection class (Pump)	IPX8
Flow rate through filter	3,500 l/h
Max. Flowrate pump (Qmax) 1)	4,500 l/h
Max. pressure	0.45 bar
Connection (pump)	33.25 mm (1") male
Hose connector	32 mm (1¼"), 38 mm (1½")
Max. fluid temperature (Tmax)	40 °C
Min. fluid temperature (Tmin)	5 °C
Quantity of filter material (filter balls)	350 g
Length of power cord	1.6 m
Type of power cord	H05RN-F 3G0,75 mm²
Weight of pump	2.4 kg
Dimension of filter set	49,3 x 34,5 x 50,4 cm
Total weight of filter set	4.9 kg
Article No.	30302

1. The values were determined with free, unreduced in- and outlet.

## Range of use

This pool filter system is designed for cleaning swimming pool water. The filter system may only be operated with the supplied washable filter balls. The system must never be operated with filter sand.

The device has been developed for private use and not for industrial or commercial purposes.

## Scope of delivery and optional accessories

### This product includes:

A filter tank, a pump, connection and installation accessories, a small pack of filter balls, usage instructions.

Check the contents for completeness. If possible, keep the packaging until the end of the warranty period. Dispose of packaging materials in an environmentally sound manner.

Depending on the application, additional accessories may be required. In our pool range, you will find other useful accessories that simplify installation, improve maintenance and pool-cleaning.

## Position and function

The pool filter system must be placed on a stable, level and solid base approx. 2 to 3 m from the edge of the pool. Ensure that the ground will not subside, preventing any strain from the attached plumbing. Protect the set from splash water and humidity. It should not be placed in an earth hole.

Make sure, the inlet of the pump is placed at least 30 cm under the water level of the swimming pool.

Please note the pump shall be placed on a well-ventilated and dry location, which is protected against floating and splash water and easy to reach for maintenance. The pump shall not be placed into a too small chamber or compartment in order to avoid overheating.



Make sure that all electric parts of the pump do not get in touch with water. Dangerous!



The pump is not suited to discharge saltwater, feces, inflammable, etching, explosive or other hazardous liquids. Please observe the max. Temperature of the liquids to be discharged stated in the technical data.

## Operation of the pool filter system

The inflowing water is routed into the top part of the filter ball filling. Dirt and foreign objects in the filter bed are left behind on their way through the filter ball filling. The filtered water returns to the pool from the bottom part of the filter container via a discharge tube.

## Installation

### General Installation Instructions



During the entire process of installation, the device must not be connected to the electrical mains.



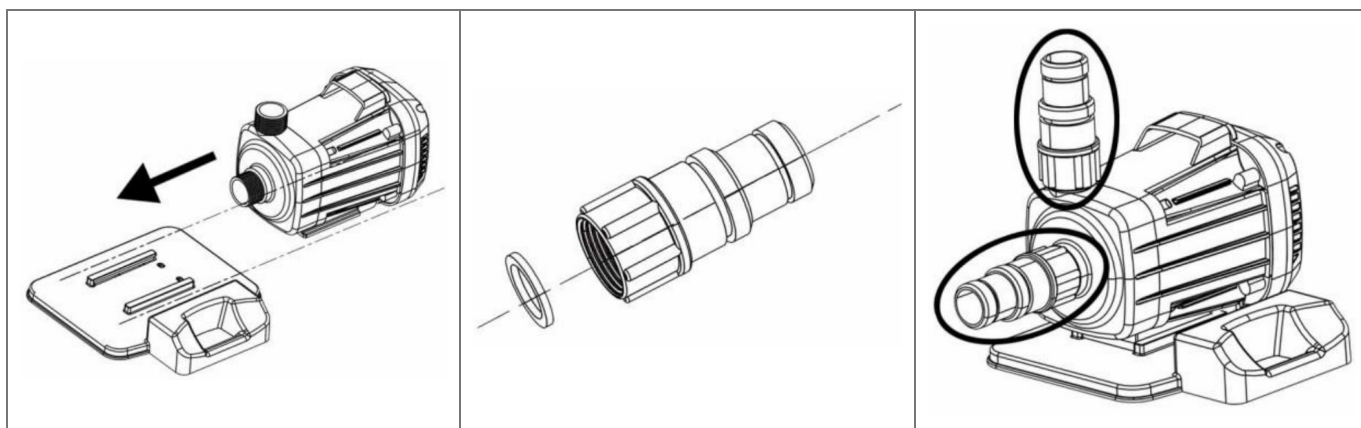
The pump and the entire port system must be protected against frost.

All connection lines have to be perfectly tight since leaking lines may affect the performance of the pump and cause considerable damage. If required, please use a suitable sealant to make the installation airtight. Avoid when tightening screw excessive force that may cause damage.

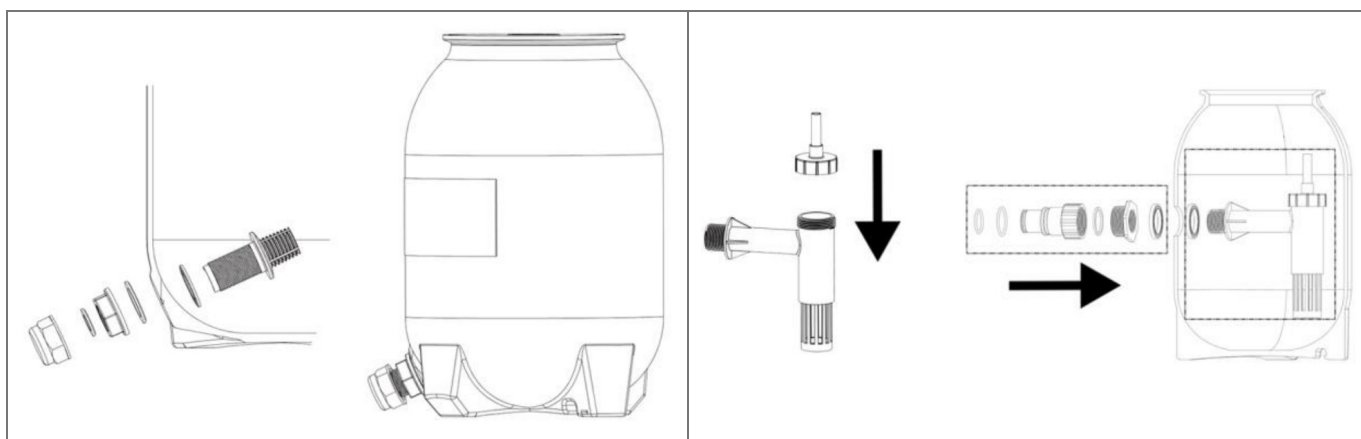
When laying the connection pipes, you should make sure that the pump is not exposed to any form of weight, vibration or tension. Moreover, the connection lines must not contain any kinks or an adverse slope. Please observe the illustrations, too, which are contained as an attachment at the end of the present operating instructions. The numeric and other details included in brackets below refer to these illustrations. Please observe the graphic figures in this manual. The numbers and other indications in brackets refer to the following graphic figures in this text.

### Installation of the pool filter system

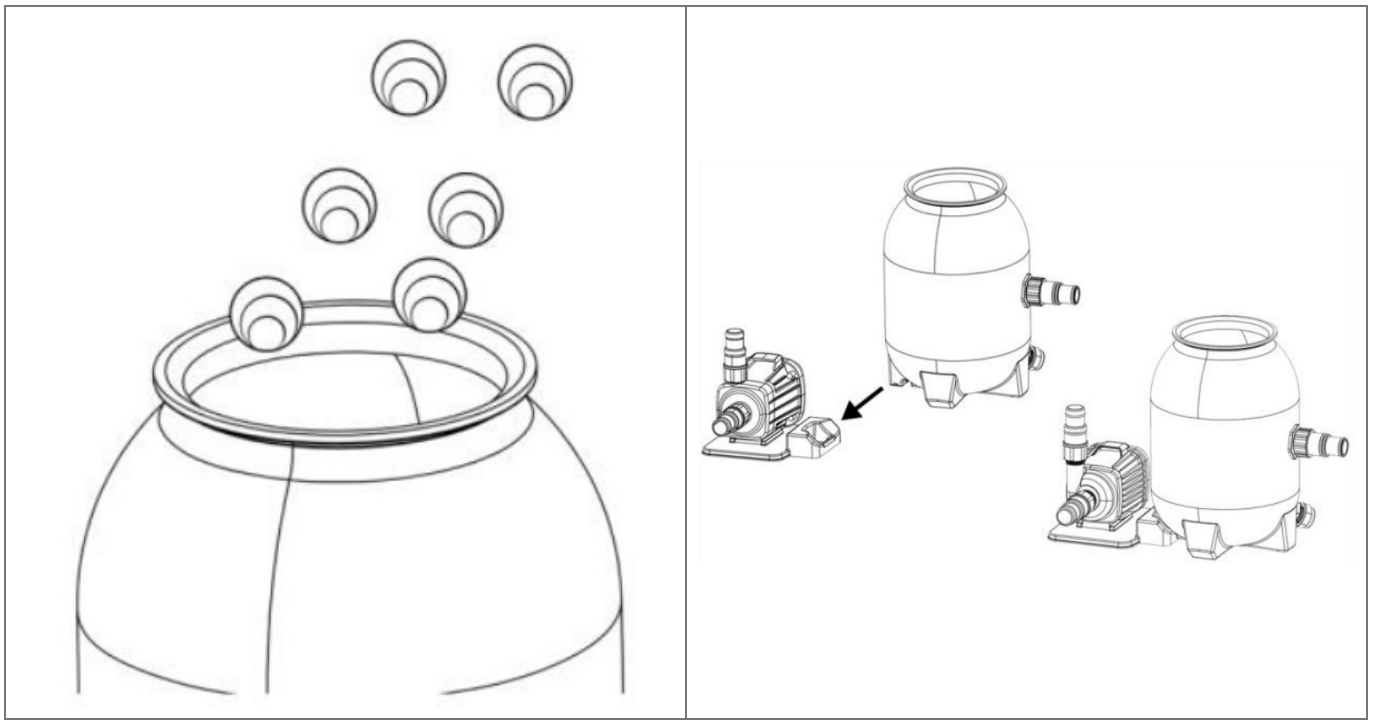
Mount the pump on the plate provided by pulling it along the dotted line so that the pump snaps into place. Insert the seals into the connection pieces and screw them onto the pump openings.



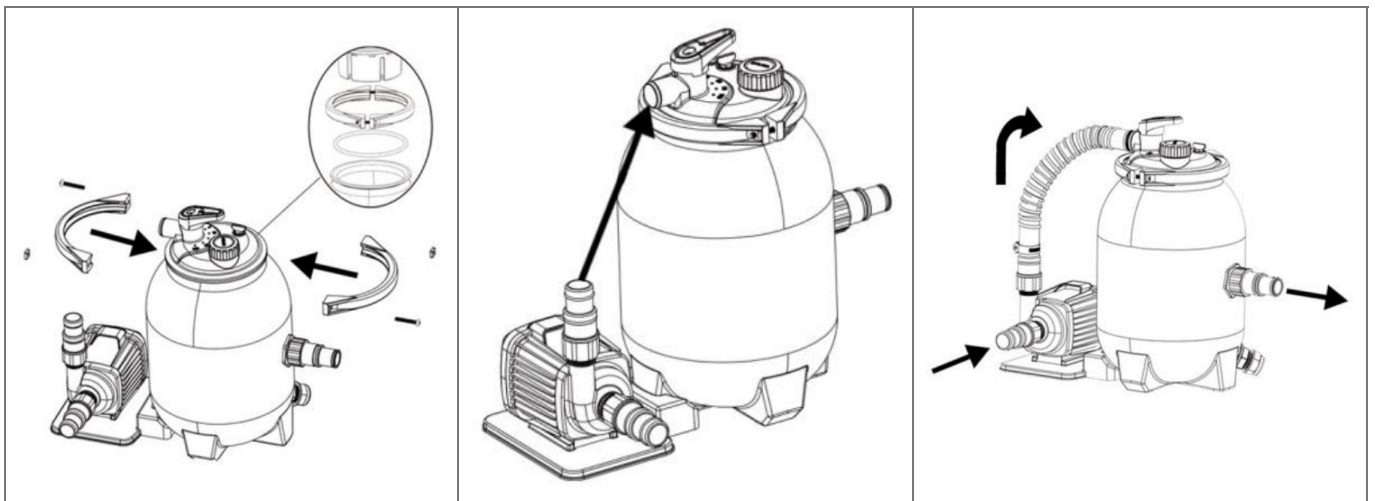
Install the drain plug. Screw the internal filter together in the direction of the arrow as shown. Then assemble the outer connection piece and the internal filter and finally install them with the tank.



Fill the enclosed filter balls into the tank. Insert the base of the tank into the recess in the pump plate. Make sure that the drain plug is pointing outwards.



Clean the edge of the tank opening thoroughly.  
 Then place the O-ring on the opening and attach the cover to the tank using the clamp (the direction of the water inlet on the valve should be opposite the water outlet of the pump).  
 Connect the tank to the pump using the hose, hose clamps and hose adapters.



#### **Please carefully note for the installation**

1. Make sure the filter is working under pressure and using a pressure control valve when the systems using a booster pump.
2. If the pump position is lower than the water level as recommended, it requires installing an isolation valve. It could stop the water return back for general care and maintenance.
3. Reducing the connect adaptors and hose connecting bending as less as possible. Decreasing the water flow scrub, it could reach the maximum effective.
4. Ensure solvents are not excessively applied to fittings as this could run into o-ring and cause damage of the sealing's.
5. Do not over tighten fittings or adapters.

## Installation of pump inlet and outlet hose

The pump is developed according to the latest technology. These preventive actions during installation will ensure a trouble-free operation for many years. Use a inlet pipe with the same diameter as the suction port of the pump.

The weight of the plumbing's and fittings is to be independently supported and not carried by the pump.

**The pump inlet must be installed under the water level of the pool, because the pump works with an intake water supply.**

For easier maintenance and care, we recommend the installation of an isolation valve. The advantage is, that by closing the isolation valve no water runs out of the pool.

**Make sure**, that there is always a sufficient quantity of water in the filter tank before starting.

If the pump does not run, observe the notices in the troubleshooting/tips section.

**Make sure**, all inlet and outlet valves are open, before priming the pump. Otherwise this could cause severe damage of the pump.

## Fixed installation



For fixed installation of the electrical connection, make sure the plug can be easily reached and is visible. For fixed installation the pump should be placed on a solid, horizontal surface.

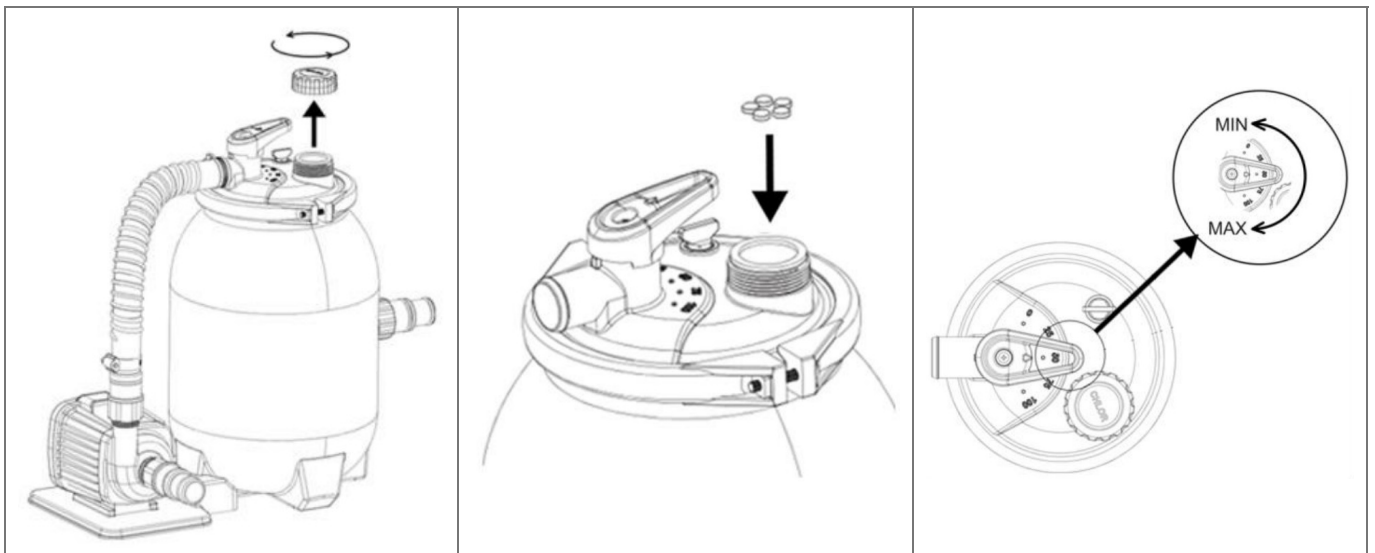


**Please note:**

- If the filter is installed below the water surface, a shut-off valve should be installed. This prevents unnecessary water flow during maintenance.

## Use of the chlorinator

Turn the lid anti-clockwise, insert the chlorine tablet into the opening provided and control the slow release of the chlorine tablet by adjusting the opening of the value according to the size of the pool and the water quality in the pool.



## Electrical connection

The unit is equipped with a mains connection cable and a mains plug. It must only be replaced by qualified staff to avoid any danger. Please do not use the mains connection cable to carry the pump, and do not use this cable to pull off the plug from the socket, either. Protect the mains connection cable and mains plug from heat, oil or sharp edges. Defect power cords must be replaced immediately.



The values stated in the technical details have to correspond to the mains voltage. The person responsible for the installation has to make sure that the electrical connection is earthed in compliance with the applicable standards.



The electrical connection has to be equipped with a highly sensitive residual current circuit breaker (FI switch):  $\Delta = 30 \text{ mA}$  (DIN VDE 0100-739).



If extension cables are used, their cross-section must not be smaller than that of rubber sheathed cables of the H07RN-F ( $3 \times 1.0 \text{ mm}^2$ ) short code. The mains socket and the plug and-socket elements have to be in splash-water-proof design.



The electrical installation must be done in accordance with the safety regulation for swimming pools and in particular with standard HD 60364-7-702 and other local specifications regulations.

## Putting into operation



For the first operation it is recommended to fill the sand filter tank with water.



Avoid any dry-running – operation of the pump without suction of water. This could cause an overheating of the pump and severe damage of the device. In addition to this, there then very hot water in the system, this can cause burning injuries and scalding. In case of an overheated pump pull out the power cord and let the system cool down. The floating ring seals can be damaged if the pump is running dry and should be replaced if this happened.



Do not expose the pump to rain or humidity. Avoid any dripping connectors. Do not place the pump in a wet or humid environment. Make sure the pump and the electrical plugs are located in an area, which is secured against flooding.



The pump must not be operated, if the inlet valve is closed.



It is absolutely forbidden to touch with the hands into the openings of the pump, if the device is connected to the power supply.



1. Please inspect the pump visually prior to each use. This applies in particular to the mains connection line and the mains plug. Make sure that all screws are firmly tightened, and verify the perfect condition of all connections. A damaged pump must not be used. In any case of damage, the pump has to be inspected by qualified service staff.
2. Each time the pump is put into operation, please make sure that the pump is set up securely and firmly standing.
3. To put the unit into operation, please plug the mains plugs into a 230V AC socket. If the water level has reached or exceeded the cut-in level, the pump will start to run immediately.
4. To stop the operation of the pump, please pull the mains plug off the socket.
5. The electrical pumps of the T.I.P. chlor comfort series are equipped with an integrated thermal motor protection feature. In the case of overload, the motor will switch off independently and on again after cooling down. For possible causes and their elimination, please refer to the "Troubleshooting / tips" section 10.

### Please note for the first operation



All inlet and outlet valves must be open when starting the system. Otherwise this can cause severe damage of the pump.



High suction lift or long suction hoses require additional time and reduce the performance of the pump. If the pump does not prime, repeat steps.

### Note:

Cleaning the pump and filter regularly increases the service life and improves their effectiveness. If the water level to be dropped in the sand filter tank, you should fill up the tank again before recommissioning.

1. Remove the translucent lid and fill the filter tank with water.
2. Replace the lid ensuring **the o-ring is correctly** located and start the pump.

After you have done this allow a **few minutes (maximum) running for** the pump to start delivering water.

### Maintenance and care



Prior to carrying out any maintenance work, the pump must be separated from the electrical mains. If you fail to separate the unit from mains, there is a risk of an inadvertent start of the pump.



We decline any liability for damage caused by inappropriate repair attempts. Any damage caused by inappropriate repair attempts will avoid all warranty claims.

### Cleaning the reusable filter balls:

- Open the filter container
- Remove the filter balls from the filter container and clean it well.

- Wash out the filter material
- Wash delicates in the washing machine at 30 °C or rinse well by hand
- Put the clean filter balls back into the filter container and close it
- If the filter balls are too worn, they must be replaced with the filter balls from the company T.I.P

Observing the conditions of use and the ranges of application of the present device will reduce the risk of possible operational malfunction and contribute to extend the lifetime of your unit. Sand and other abrasive matters contained in the liquid discharged will speed up the process of wearing and tearing and accelerate the drop in performance.

The user must ensure that maintenance is done from qualified persons, who have carefully read all instructions for installation and maintenance.

If the device is not used for a long time, the pump and the filter container should be emptied using the devices provided for this. In the event of frost, water remaining in the pump and filter can cause considerable damage if it freezes. Store the pump at a dry and frost-proof location. If the pump is operated again after a longer break, please ensure all sealing and und O-Rings are in good condition. Replace any defect or damaged sealing's.

**A regular check of the mechanical and electric parts is recommended:**

1. The accurate and right connection of adapters, hose and pipes and secured tightness of all screws.
2. The correct condition of all electric connections and power cords.
3. The vibration of the pump. In case of an excess high vibration, stop the pump immediately and contact your service partner or the manufacturer.

**Troubleshooting / tips**

In the case of malfunction, you should first of all check whether it was caused by an operating error or some other reason which cannot be attributed to a defect of the device – for instance a power failure.

The list below shows some possible malfunctions of the device, possible causes and tips on their elimination. All the measures referred to may only be carried out with the pump being separated from the electrical mains. If you yourself feel unable to eliminate any of these malfunctions, please contact the customer service department or your point of sales. Any repair beyond the scope specified below must only be performed by qualified staff. Please bear in mind that all warranty claims will become void in the case of damage caused by inappropriate repair attempts, and that we decline any liability for any ensuing damage.

MALFUNCTION	POSSIBLE CAUSE	ELIMINATION
-------------	----------------	-------------

<p>1. The pump is not discharging any liquid, the motor is not running.</p>	<ol style="list-style-type: none"> <li>1. No current.</li> <li>2. Thermal motor protection feature has triggered.</li> <li>3. The capacitor is defective.</li> </ol>	<ol style="list-style-type: none"> <li>1. Please use a device complying with GS (German technical supervisory authority) to check for the presence of voltage (safety information to be observed!). Please verify the correct position of the plug. Separate the pump from the electrical</li> <li>2. mains, allow the system to cool down, eliminate cause.</li> <li>3. Please contact the customer service department.</li> </ol>
<p>2. The motor is running, but the pump is not discharging any liquid.</p>	<ol style="list-style-type: none"> <li>1. The pump housing is not filled with liquid.</li> <li>2. Air penetrates into the pump body</li> <li>3. Check valve (non-return valve), if present, is blocked or defective.</li> </ol>	<ol style="list-style-type: none"> <li>1. Ensure the water level in the pool is above the suction point of the pump. Make sure the strainer is free of dirt</li> <li>2. Check to make sure that: <ol style="list-style-type: none"> <li>a. the connection points of the intake line are tight;</li> <li>b. No siphons (i.e. permanently liquid-filled loops), kinks, counter-slopes or narrow spots are present along the intake lines.</li> </ol> </li> <li>3. Eliminate blocking of the check valve (non-return valve) or replace, if damaged. Clean the insert of the pump and check any blockage of the impeller</li> </ol>
<p>3. The pump stops after a short time of operation because the thermal motor protection feature has triggered.</p>	<ol style="list-style-type: none"> <li>1. The electrical supply does not correspond to the information given on the type plate</li> <li>2. Pump or intake openings are blocked by solids.</li> <li>3. Temperature of the liquid is too high. Pump is running dry.</li> </ol>	<ol style="list-style-type: none"> <li>1. Please use a device complying with GS (German technical supervisory authority) to check for the presence of voltage (safety information to be observed!).</li> <li>2. Remove possible congestion.</li> <li>3. Make sure that the temperature of the liquid being pumped does not exceed the max. admissible value.</li> <li>4. Eliminate causes of dry-running.</li> </ol>

4 .Low current	1. Dirty filter 2. Blockage in the pipe	1. clean the filter 2. Check the pipes. Avoid any bending of hoses. Flush with sufficient water in case of need.
5. Noise in the pump during the operation	1. Defect bearing Air penetrates into the intake line. 2. Blockage during aspiration 3. Fault in the impeller 4. Disturbance while sucking	1. Contact your local service partner or the manufacturer 2. see section 2 of this table 3. Check and clean the suction hose 4. Contact your local service partner or the manufacturer 5. Improve the suction inlet. Make sure the suction inlet is under the water level of the swimming pool . Reduce the numbers of screws; assemble a pipe with a larger diameter.

## Warranty

The present device was manufactured and inspected according to the latest methods. The seller warrants for faultless material and workmanship in accordance with the legal regulations of the country in which the device was purchased. The warranty period begins with the day of the purchase and is subject to the provisions below: Within the period of warranty, all defects which are to be attributable to defective materials or manufacturing will be eliminated free of charge. Any complaints are to be reported immediately upon their detection.

The warranty claim becomes void in the case of interventions undertaken by the purchaser or by third parties.

Damage resulting from improper handling or operation, incorrect setting-up or storage, inappropriate connection or installation or Acts of God or other external influences are excluded from warranty.

Parts being subject to wear and tear are excluded from warranty.

All parts were manufactured using maximum care and high-quality materials and are designed for a long lifecycle. It should be understood, however, that the wear and tear depends on the kind of use, the intensity of use and the internals of maintenance. Complying with the installation and maintenance information contained in the present operating instructions will therefore considerably contribute to a long lifecycle of these wearing parts.

In case of complaints, we reserve the option of repairing or replacing the defective parts or replace the entire device. Replaced parts will pass into our property.

Claims for liquidated damages are excluded unless they are caused by willful acts or negligence on the side of the manufacturer.

The warranty does not provide for any claims beyond those referred to above. The warranty claim has to be evidenced by the purchaser in the form of the submission of the sales receipt. The present warranty commitment is valid in the country in which the device was purchased.

### Please note:

1. Should your device fail to function properly, please verify first whether an operating error or another cause is present which cannot be attributed to a defect of the device.
2. In case you have to take or send in your defective device for repair, please be sure to enclose the following

documents:

- Sales receipt (sales slip).
  - A description of the occurring defect (a description as accurate as possible will expedite the repair work).
3. In case you have to take or send in your defective device for repair, please remove any attached parts which do not belong to the original condition of the device. If any attached parts of this kind should be missing upon the return of the device, we shall not be liable for them.

## How to order spare parts

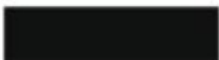
The fastest, most simple and cheapest way of ordering spare parts is through the internet. On our [www.tippumpen.de](http://www.tippumpen.de) website you will find a convenient spare part shop where you can order spare parts with just a couple of clicks. In addition, this is also the place where we publish comprehensive information and valuable tips on our products and accessories, introduce new devices and present current trends and innovations in the range of pump technology. Original spare parts and accessory, which are authorized by the manufacturer, ensure a high degree of safety. The manufacturer of the pump is not liable for any damage or injuries which are caused by the usage of non-authorized spare parts and accessory.

## Service

In the case of warranty claims or malfunction, please contact your point of sale.

A current operating manual is available as required as a PDF file via e-mail: [service@tip-pumpen.de](mailto:service@tip-pumpen.de).

## For EC countries only



Please do not dispose of electrical appliances in the regular domestic waste!

According to the European Directive 2012/19/EU regarding waste electrical and electronic equipment and the implementation of that directive into national law, electrical devices have to be collected separately and disposed of in an environmental-suitable manner after the end of their life cycle. Should you have any questions, please contact your local waste disposal company.

## CUSTOMER SUPPORT

Etichettatura ambientale



**SERVICE-HOTLINE**

+49 (0) 7263 9125-0

**Montag bis Freitag von 08.00 bis 17.00 Uhr**

Email: [service@tip-pumpen.de](mailto:service@tip-pumpen.de)

**TECHNIKER-SPRECHSTUNDE**

+49 (0) 7263 9125-50

**Montag bis Freitag von 15.00 bis 17.00 Uhr**

T.I.P. Technische Industrie Produkte GmbH Siemensstraße 17

D-74915 Waibstadt / Germany

**Tel.:** +49 (0) 7263 9125-0

**Fax:** +49 (0) 7263 9125-85

**Webseite:** <http://www.tip-pumpen.de>

Waibstadt, 12.01.2024  
Technische Industrie Prod

Ive Gottschalk  
ter Produktmanagem



FR

Cet appareil  
et ses accessoires  
se recyclent

REPRISE  
À LA LIVRAISON



OU

À DÉPOSER  
EN MAGASIN



OU

À DÉPOSER  
EN DÉCHÈTERIE



**T.I.P.**

TECHNIK + KOMPETENZ

**Documents / Resources**



[T I P 15000 Pool Filter System](#) [pdf] Instruction Manual  
15000 Pool Filter System, 15000, Pool Filter System, Filter System

**References**

-  [Das neue Batteriegesetz \(BattG\)](#)
-  [Start - Pospischil - Reparaturbonus](#)
-  [Start - Pospischil - Reparaturbonus](#)
-  [Online-Shop für Pumpen, Filter & mehr – T.I.P. Pumpen](#)
-  [Online-Shop für Pumpen, Filter & mehr – T.I.P. Pumpen](#)
-  [Startseite - Das neue Elektrogesetz \(ElektroG, WEEE\) 2024](#)
- [User Manual](#)

**Manuals+, Privacy Policy**

This website is an independent publication and is neither affiliated with nor endorsed by any of the trademark owners. The "Bluetooth®" word mark and logos are registered trademarks owned by Bluetooth SIG, Inc. The "Wi-Fi®" word mark and logos are registered trademarks owned by the Wi-Fi Alliance. Any use of these marks on this website does not imply any affiliation with or endorsement.