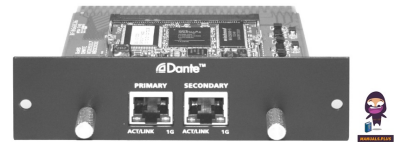


  
**NF04662-1.0 High  
Performance  
Networking Audio  
Transceiver Module**



# T-DANTE NF04662-1.0 High Performance Networking Audio Transceiver Module User Manual

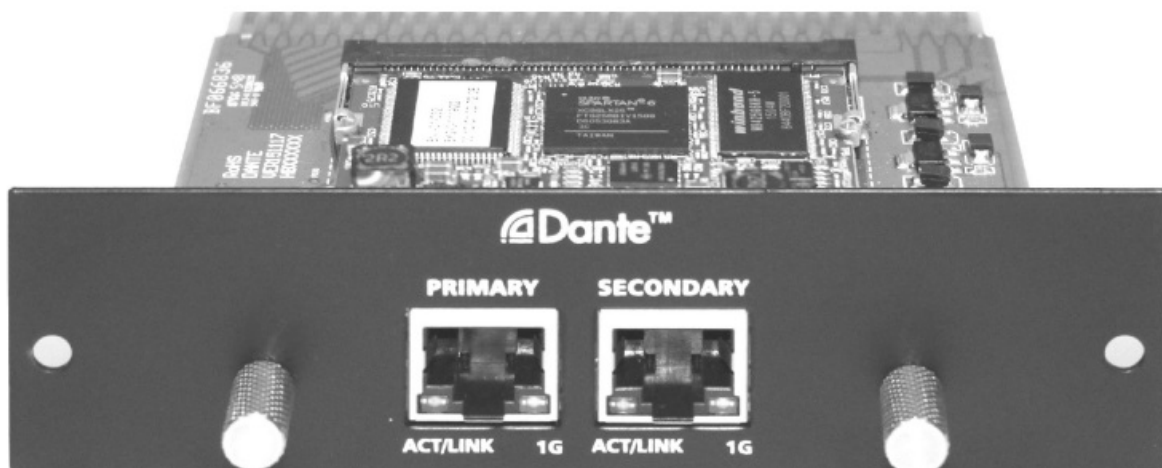
[Home](#) » [T-DANTE](#) » T-DANTE NF04662-1.0 High Performance Networking Audio Transceiver Module User Manual 

## Contents

- [1 T-DANTE NF04662-1.0 High Performance Networking Audio Transceiver Module](#)
- [2 Specifications](#)
- [3 FAQs](#)
- [4 Important Safety Instructions](#)
- [5 Introduction](#)
- [6 Installation](#)
- [7 Driver install](#)
- [8 Documents / Resources](#)
  - [8.1 References](#)
- [9 Related Posts](#)



## T-DANTE NF04662-1.0 High Performance Networking Audio Transceiver Module



## Specifications

- Model: T-DANTE
- Network Interface: 1G ACT/LINK
- Version: NF04662-1.0

## FAQs






### Q: What should I do if the T-DANTE device is not connecting to the network?

A: Check the Ethernet cable connections and ensure the network settings are correctly configured. You can also try power cycling the device and checking for any IP conflicts.

### Q: How can I update the firmware of the T-DANTE device?

A: Download the latest firmware from the manufacturer's website and follow the instructions provided in the user manual for the firmware update process.


## Important Safety Instructions

-  This symbol, wherever used, alerts you to the presence of un-insulated and dangerous voltages within the product enclosure. These are voltages that may be sufficient to constitute the risk of electric shock or death.
-  This symbol, wherever used, alerts you to important operating and maintenance instructions. Please read.
-  Protective Ground Terminal
-  AC mains (Alternating Current)
-  AC mains (Alternating Current)
- **NO** Denotes the product is turned on.
- **OFF** Denotes the product is turned off.

## WARNING

- Describes precautions that should be observed to prevent the possibility of death or injury to the user.

## CAUTION

-  Describes precautions that should be observed to prevent damage to the product. Disposing of this product should not be placed in municipal waste but rather in a separate collection.

## WARNING

- **Power Supply** Ensure that the mains source voltage (AC outlet) matches the voltage rating of the product. Failure to do so could result in damage to the product and possibly the user. Unplug the product before electrical storms occur and when unused for long periods of time to reduce the risk of electric shock or fire.

### **External Connection**

- Always use proper ready-made insulated mains cabling (power cord). Failure to do so could result in shock/death or fire. If in doubt, seek advice from a registered electrician.

### **Do Not Remove Any Covers**

- Within the product are areas where high voltages may present. To reduce the risk of electric shock do not remove any covers unless the AC mains power cord is removed. Covers should be removed by qualified service personnel only. No user-serviceable parts inside.

### **Fuse**

- To prevent fire and damage to the product, use only the recommended fuse type as indicated in this manual. Do not short-circuit the fuse holder. Before replacing the fuse, make sure that the product is OFF and disconnected from the AC outlet.

### **Protective Ground**

- Before turning the unit ON, make sure that it is connected to the Ground. This is to prevent the risk of electric shock. Never cut internal or external Ground wires. Likewise, never remove Ground wiring from the Protective Ground Terminal.

### **Operating Conditions**

- Always install in accordance with the manufacturer's instructions. To avoid the risk of electric shock and damage, do not subject this product to any liquid/rain or moisture. Do not use this product when in close proximity to water. Do not install this product near any direct heat source. Do not block areas of ventilation. Failure to do so could result in fire. Keep product away from naked flames.

### **IMPORTANT SAFETY INSTRUCTIONS**

- Read these instructions Follow all instructions Keep these instructions. Do not discard. Heed all warnings. Only use attachments/accessories specified by the manufacturer.

### **Power Cord and Plug**

- Do not tamper with the power cord or plug. These are designed for your safety. Do not remove Ground connections! If the plug does not fit your AC outlet seek advice from a qualified electrician. Protect the power cord and plug from any physical stress to avoid the risk of electric shock. Do not place heavy objects on the

power cord. This could cause electric shock or fire.

## **Cleaning**

- When required, either blow off dust from the product or use a dry cloth. Do not use any solvents such as Benzene or Alcohol. For safety, keep the product clean and free from dust.

## **Servicing**

- Refer all servicing to qualified service personnel only. Do not perform any servicing other than those instructions contained within the User's Manual.

## **PORTABLE CART WARNING**

Carts and stands – The component should be used only with a cart or stand that is recommended by the manufacturer. A component and cart combination should be moved with care. Quick stops, excessive force, and uneven surfaces may cause the component and cart combination to overturn.

## **Introduction**

### **Feature summary**

- Mini-PCI form factor (card edge)
- On-board microprocessor to handle local control and management functions
- Redundant network connections via switch
- Bit depths: 32 per sample
- Up to 32\*32 channels at 48kHz
- Up to 32\*32 simultaneous audio streams
- Hardware audio metering
- High-quality, low-jitter onboard clock
- Up to 2000 sample audio buffering per channel
- Standard RGMII/MII interface for Ethernet PHY or switch chip
- Software is upgradeable over network

### **Temperature Characteristics**

- Operating temperature range: 0 ° to 70 ° Celsius
- Recommended storage temperature: -40° to 100° Celsius

### **Electrical Characteristics**

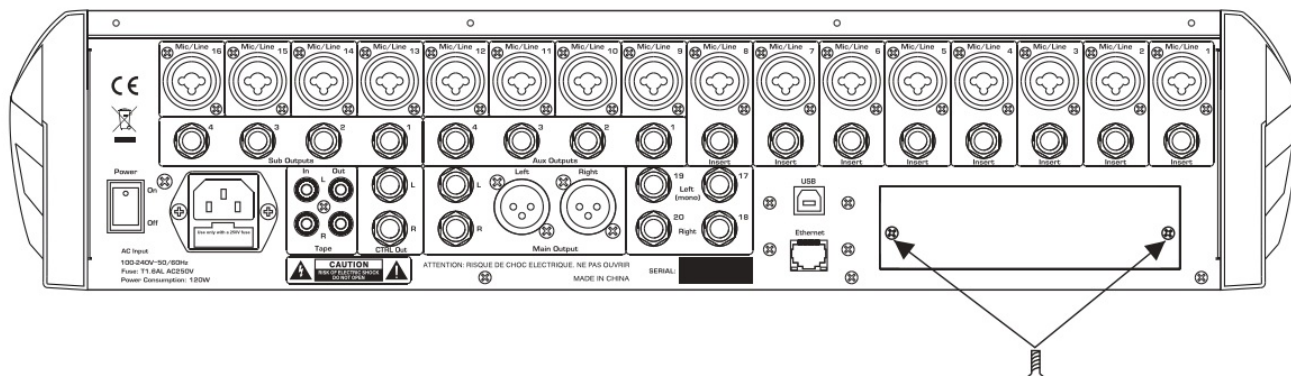
- Power Supply: 3.3V
- Power Consumption: < 2W

### **Interface function instruction**

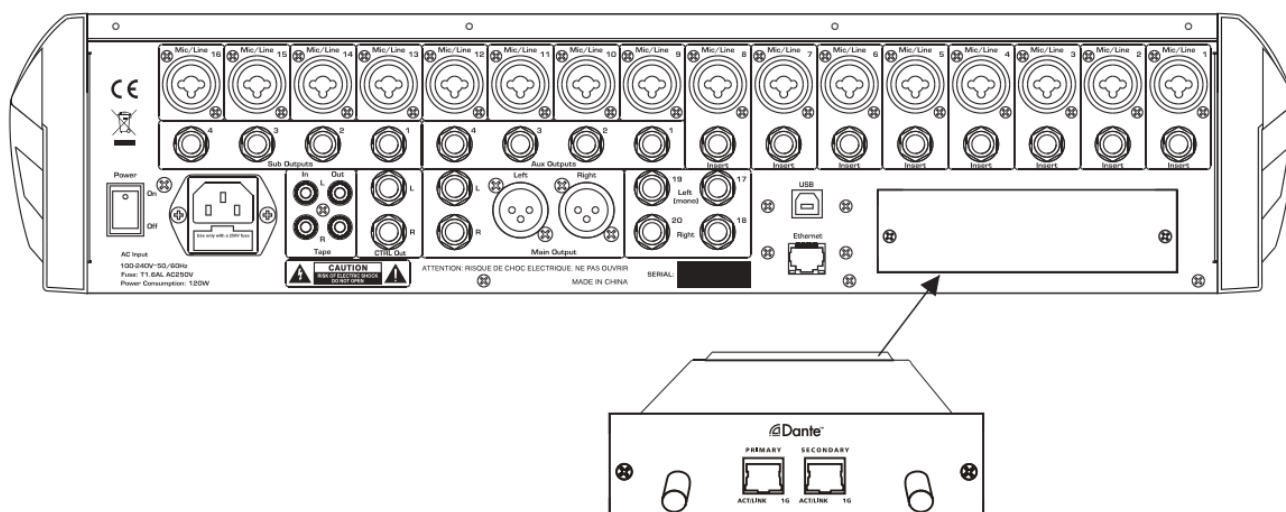
The ACT/LINK port that connects DANTE and PC can play and record in 32 channels.

## Installation

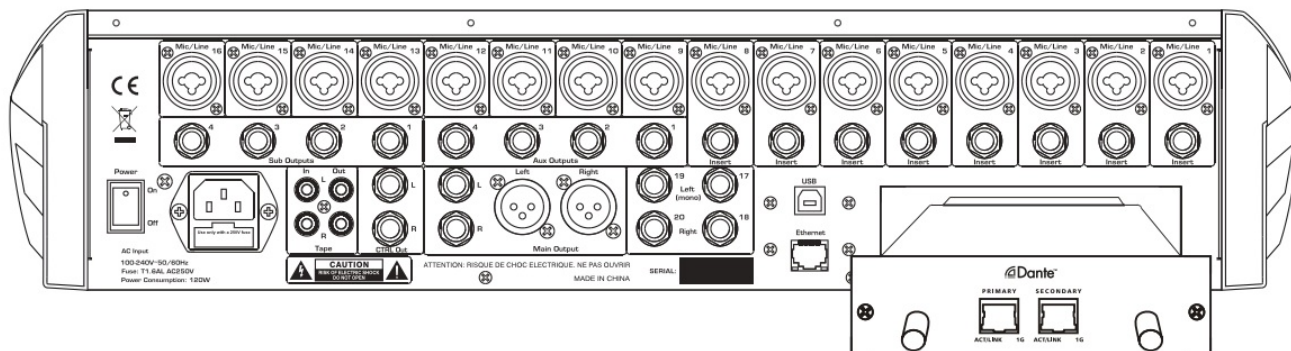
1. Disassemble the 2 screws with the screwdriver following the below picture.



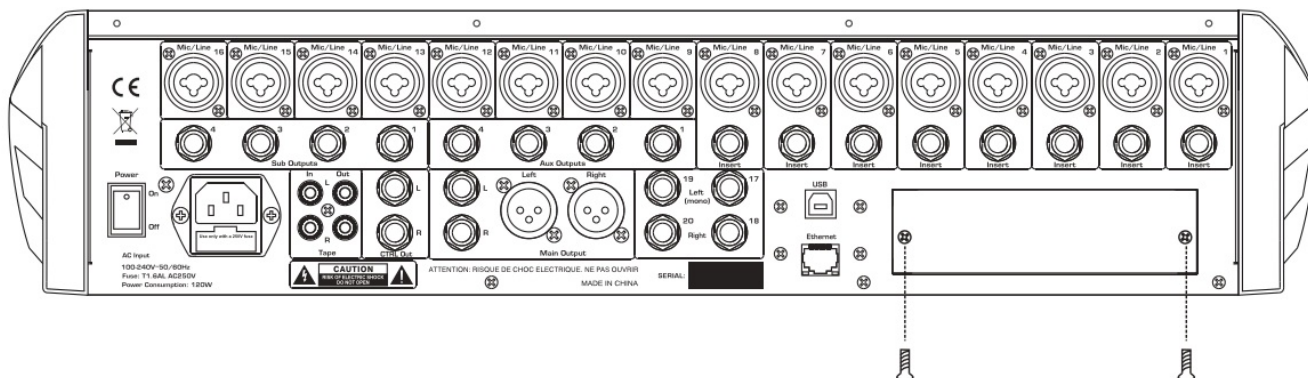
2. Disassemble the Module from MIXER.



3. Insert the Module on the slots following the below picture and the Module must be on the middle of the slot.



4. Push the module and make it match with the whole panel.
5. Assemble the 2 screws following the below picture.



## Driver install

## Minimum System Requirement

The tables below list the minimum system specifications for your computer to be able to use Dante Controller disclaimer: It is possible that your computer may meet the requirements below, but suffer from some other individual performance limitation related to its particular hardware. Please seek the advice of your computer support administrator.

### General

Component	Recommended Minimum Requirement
Processor	1GHz or better.Dual-core CPU
Memory	1 Gigabyte of RAM
network	A Gigabit(1000 Mbps) Ethernet network interface is required for channel counts above 32×32@48kHz. Wireless LAN(WiFi) Ethernet interfaces are not supported.
Operating System(Windows)	Windows 7 (SP1 and above),8 and 8.1.NOTE: both UTF-8 and Unicode is supported EXCEPT for host or device names; the DNS standard does not support Unicode for these
Storage /Disk	As is the case with any application of this type, higher transfer rates are required for recording and playing back large numbers of audio tracks to and from the disk. Disk speeds of 7200rpm and above are recommended for more than 16 channels of record/playback from disk.

## Software to be installed

### Dante Controller

#### 1. About Dante Controller

- Dante Controller is a software application provided by Audinate which allows users to configure and route audio around Dante networks .It is available for Windows and OS X.

#### 2. Installing Dante Controller

**NOTE:**Before installing.please turn on Firewall.

1. Double-click the icon for Dante Controller.exe DanteController-3.5.6.2\_windows.exe
2. Read the license text, and if you accept the terms of the agreement, click the 'I Agree .. check- box. If you don't accept the terms, click Close to terminate the installation.



3. Acknowledge/accept any Windows security warnings that are displayed.
4. Click Launch to start Dante Controller or Click Close to finish installing.



## Dante Virtual Soundcard

### 1. About Dante Virtual Soundcard

Dante Virtual Soundcard is a software application that turns your PC or Mac into a Dante-enabled device, allowing Dante audio traffic to be transmitted and received using the standard Ethernet port. No additional hardware is required.

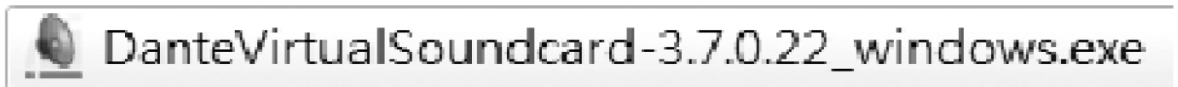
**NOTE:** The Dante Virtual Soundcard does not support virtual machines – it must be installed on a computer with a standard Windows or Mac OS X operating system .

### 2. Installing Dante Virtual Soundcard

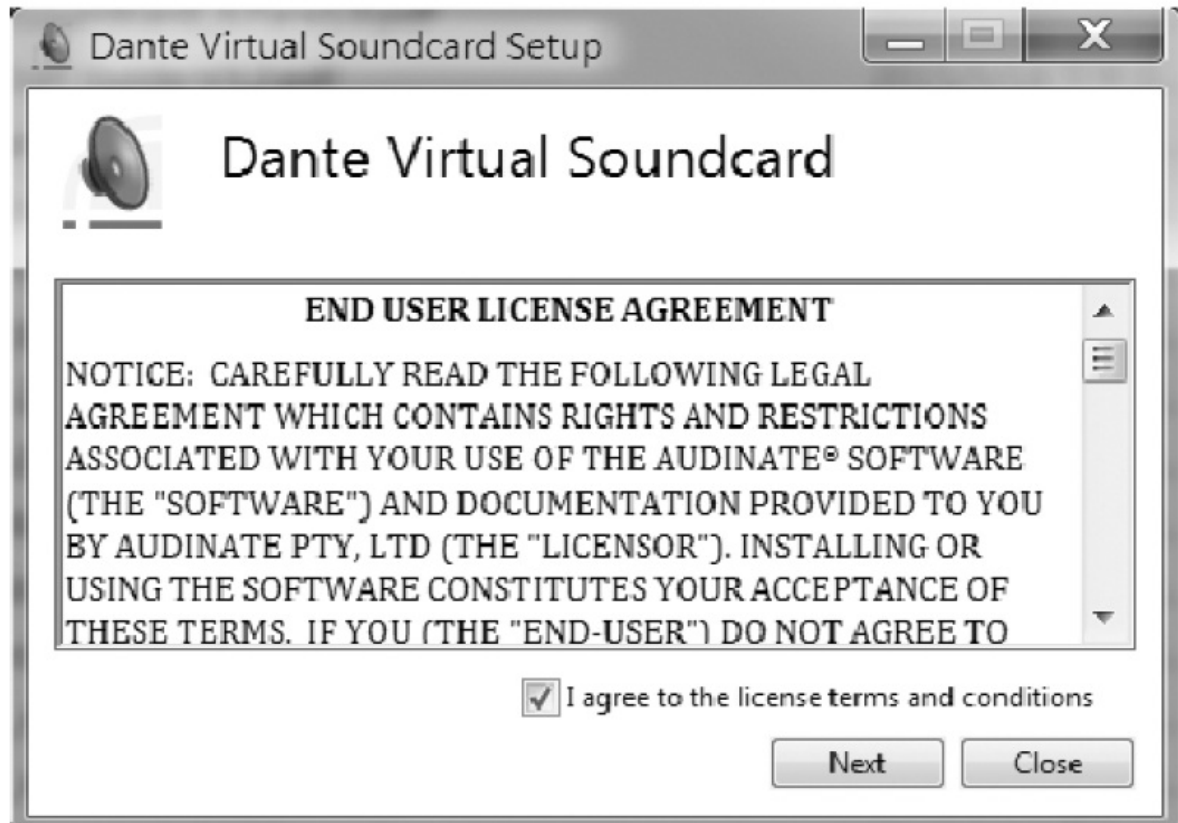
- NOTE: Before installing, please turn on Firewall. To install:



1. Ensure you are logged on to your PC as an administrator.
2. Double-click the icon for the Dante Virtual Soundcard.



3. Read the license text. and if you accept the terms of the agreement. click the "I Agree ..." checkbox. If you do not accept the terms, click Close to terminate the installation.



4. The Network Throttling Management screen is displayed. Audinate advises that you let Dante Virtual Soundcard manage network throttling(the default option).
5. Click Install.



6. Acknowledge/accept any Windows security warnings that are displayed.
7. click Launch to start the software application or click Close to finish installing.



- Audio Applications for recording and playback Please refer to the 'operating\_instructions\_for\_recording\_and\_playback.doc' file.

## Configuration

Dante Controller

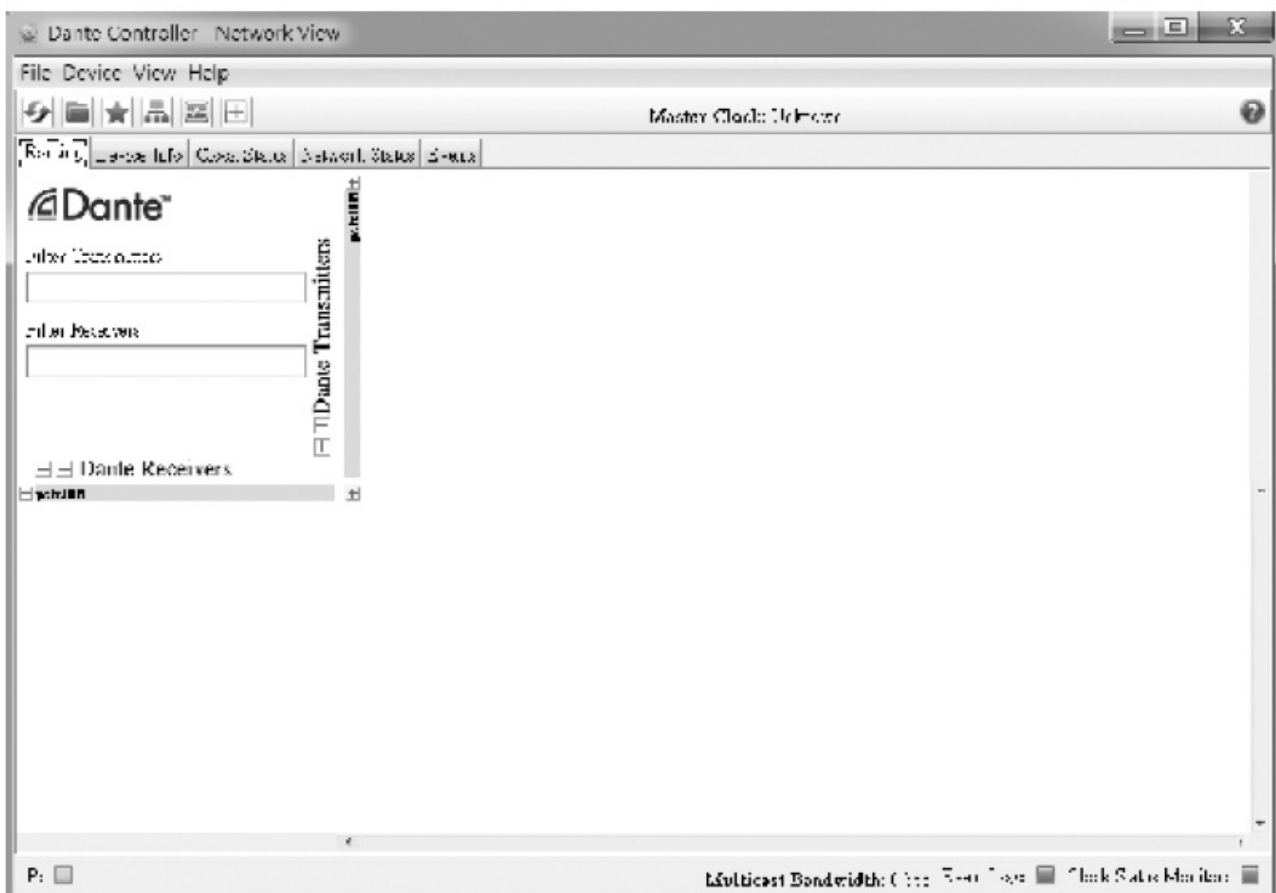
## Starting the Dante Controller

By default, Dante Controller will be installed in: C:\Program Files\Audinate\Dante controller\ In 64-bit Windows, it will appear under C:\Program Files (x86) The Dante Controller can be started in several ways:

- **One** : using the Start menu: Start>Programs>Audinate>Dante Controller>Dante Controller
- **Two**: navigate to the directory where it is installed, and double-click the Dante Controller.

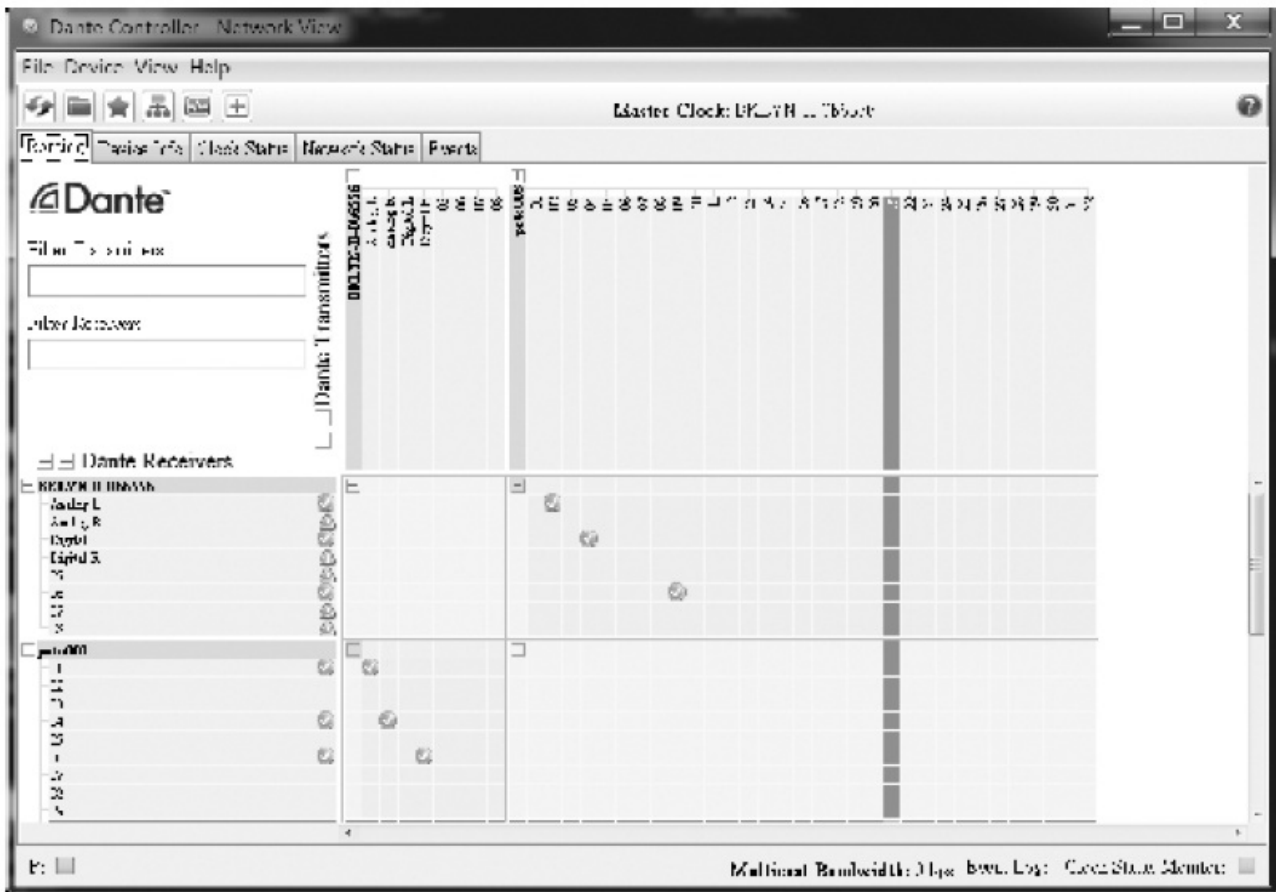


**Routing:** When the Dante Controller is started, it always displays the Routing Tab within the Network View. In this view, the network is shown in the form of a grid. Devices with Tx channels are displayed along the top row of the grid, and those with Rx channels are displayed along the left-hand column of the grid. Initially, a collapsed view is presented; individual channels cannot be seen.

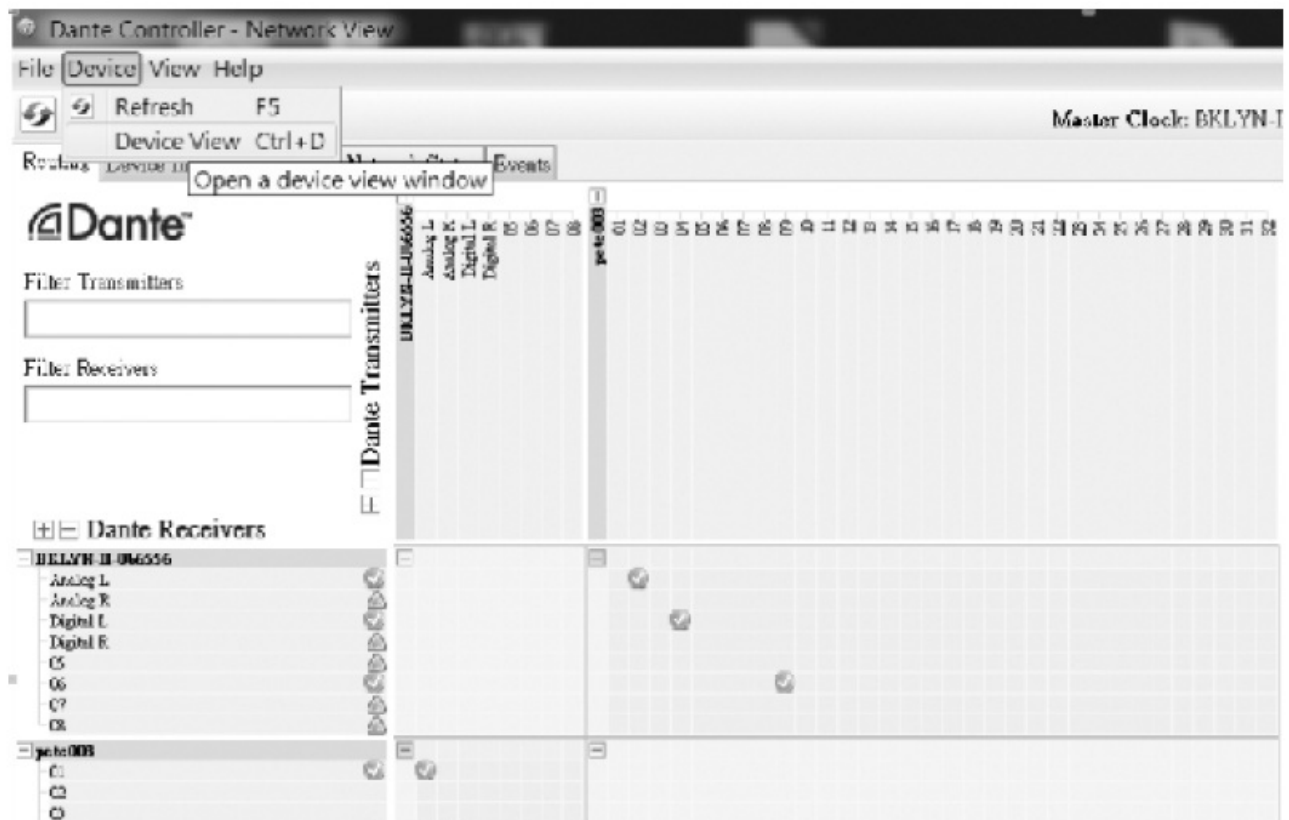


Click I+ I between different devices to show Tx channels and Rx channels, and click any grid between Tx channels and Rx channels to change the connected state of the two channels.

**NOTE:** There is no sense in clicking any grid between the Tx channels and Rx channels of the same device.



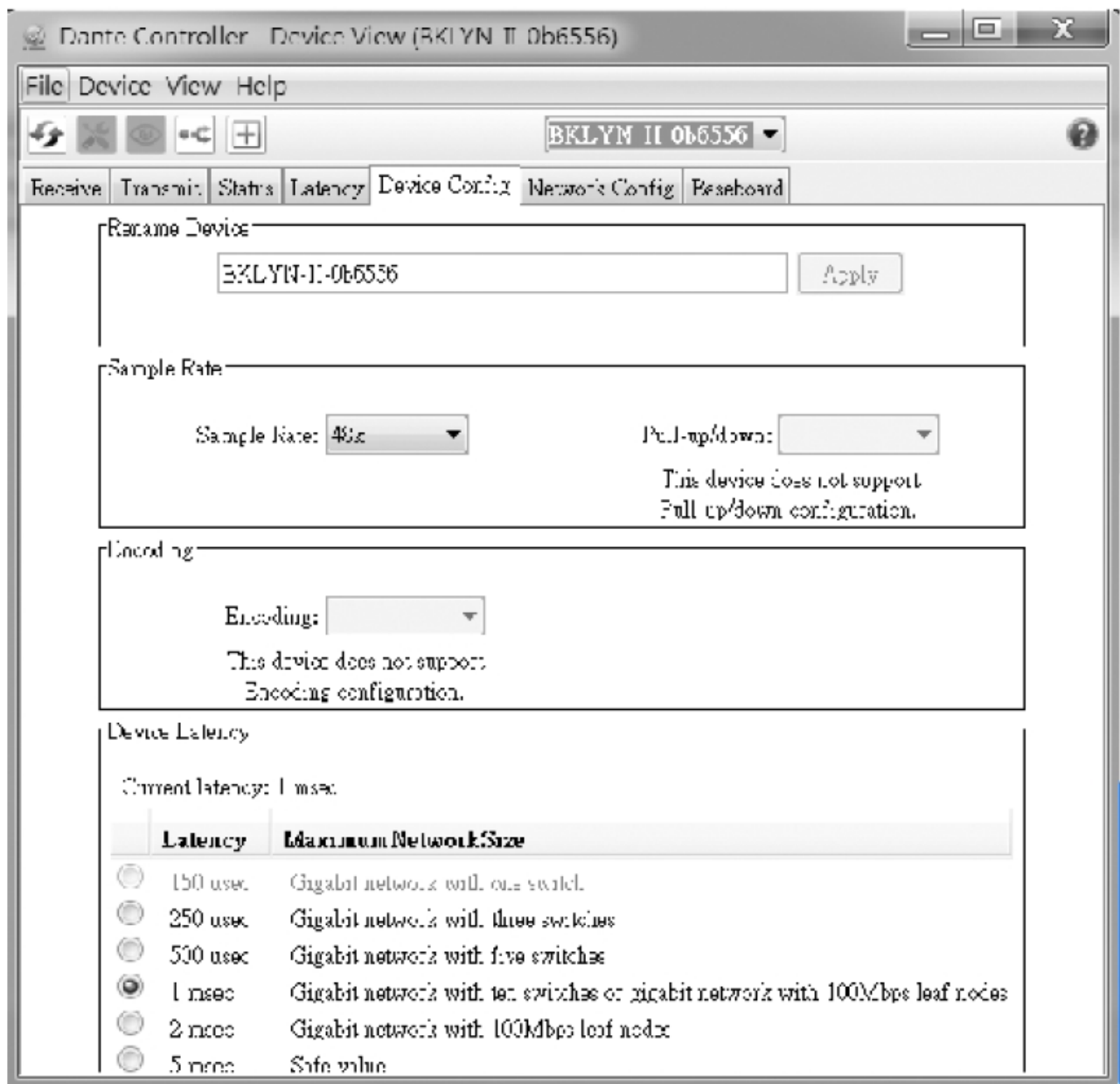
- Next, configure the audio interface and device name of Dante Virtual Soundcard using Dante Controller. By default, the device name of Dante Virtual Soundcard is the user name of your computer. Click the Device button on the Menu bar, you will be presented with the Device view.




- Select the device name of Dante Virtual Soundcard on the screen.



- Click Device Config to display the configuration of Dante Virtual Soundcard and then change the settings of Dante Virtual Soundcard.



- Dante Virtual Soundcard
  - Starting the Dante Virtual Soundcard Control Panel(Windows) By default, Dante Virtual Soundcard will be installed in: C:\Program Files\Audinate\Dane Virtual Soundcard\ In 64-bit Windows,it will appear under C:\Program Files (x86)
  - The Dante Virtual Soundcard Control Panel can be started in one of two ways:
  - One:using the Start menu:Start>Programs>Audinate>Dante Virtual Soundcard>Dante Virtual Soundcard;
  - or
  - Windows 8: Windows key>Dante Virtual Soundcard
  - Two: navigate to the directory where it is installed, and double-click the Dante
    - Virtual Soundcard icon:  dvs\_gui.exe
  - The first time you start the Dante Virtual Soundcard Control Panel,you will be presented with the Licensing screen.



- Once you have obtained a License ID, it can be entered in the Licensing tab. The Activate button is not enabled until a correctly formatted License ID has been entered into the dialog box.

**NOTE:** Ensure that your computer has access to the Internet during this step.



#### • Settings

- NOTE: Most settings cannot be changed while Dante Virtual Soundcard is running, or when an ASIO application is connected.
- NOTE: The device name and audio interface(sample rate and bit depth) must be set in Dante Controller,

While Dante Virtual Soundcard is running.

- **To change settings:**

1. Completely quit out of any audio applications that are using the Dante Virtual Soundcard.
2. Stop Dante Virtual Soundcard
3. Change your Dante Virtual Soundcard settings.
4. Restart Dante Virtual Soundcard
5. Restart your audio application/s.


Click Settings on Dante Virtual Soundcard Control Panel and set up the parameters as below:



**NOTE:** Computers with poor scheduling performance will need to use higher settings of Buffer Size and Asia Latency.

Click Start to start the Dante Virtual Soundcard. When the button shows Stop, it indicates that the Dante Virtual Soundcard is currently running. The icon shows Start, illustrating the Dante Virtual Soundcard is currently stopped. Click the button to toggle the running state of Dante.

## Documents / Resources

	<p><a href="#">T-DANTE NF04662-1.0 High Performance Networking Audio Transceiver Module</a> [pdf] User Manual</p> <p>NF04662-1.0 High Performance Networking Audio Transceiver Module, NF04662-1.0, High Performance Networking Audio Transceiver Module, Networking Audio Transceiver Module, Audio T ransceiver Module, Transceiver Module, Module</p>
---	--

## References

- [User Manual](#)

[Manuals+](#), [Privacy Policy](#)

This website is an independent publication and is neither affiliated with nor endorsed by any of the trademark owners. The "Bluetooth®" word mark and logos are registered trademarks owned by Bluetooth SIG, Inc. The "Wi-Fi®" word mark and logos are registered trademarks owned by the Wi-Fi Alliance. Any use of these marks on this website does not imply any affiliation with or endorsement.