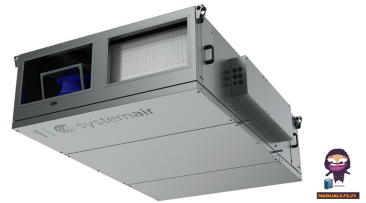


# **Topvex False Ceiling units**



## **systemair Topvex False Ceiling units Installation Guide**

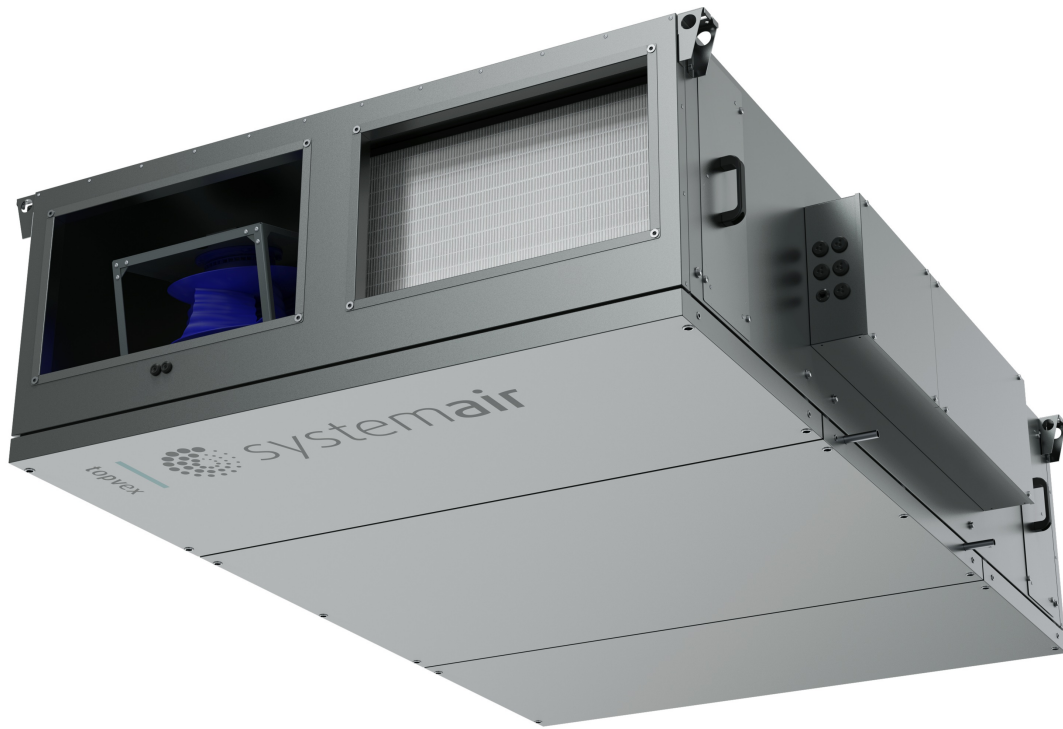
[Home](#) » [systemair](#) » systemair Topvex False Ceiling units Installation Guide 

### **Contents**

- [1 systemair Topvex False Ceiling units](#)
- [2 Specifications](#)
- [3 FAQs](#)
- [4 PRODUCT INFORMATION](#)
- [5 Topvex false ceiling units](#)
- [6 Flexibility through accessories](#)
- [7 Access Control system](#)
- [8 Access Application Tool](#)
- [9 Technical Data](#)
- [10 Documents / Resources](#)
  - [10.1 References](#)
- [11 Related Posts](#)



**systemair Topvex False Ceiling units**



## Specifications

- **Product Name:** Topvex False Ceiling Air Handling Units
- **Installation Type:** False ceiling installations
- **Features:** Easy to fit or retrofit, compact design
- **Control System:** User-friendly control systems
- **Energy Efficiency:** Low energy consumption

## FAQs

- **Q: What makes Topvex False Ceiling units different?**
  - **A:** The units offer compact design, energy efficiency, low noise levels, and wireless control for easy operation.
- **Q: Can the units be connected to a BMS system?**
  - **A:** Yes, the units can be connected to a BMS system for centralized control and monitoring.
- **Q: Are Topvex False Ceiling units suitable for large projects?**
  - **A:** Yes, the units come in a wide range of capacities and are part of a larger product range to meet the demands of large projects.

## PRODUCT INFORMATION

- **If Topvex False Ceiling units are the answer, what is the question?**
  - **HVAC Consultant:** Is there a compact AHU that's easy to fit or retrofit into my customer's building? There's no fan room and the space does not allow for floorstanding AHUs.
  - **HVAC Installer:** Is there an AHU that offers easy transportation and installation, with user-friendly control systems, yet still meets the performance specs?
  - **Building owner:** I want an AHU with low energy consumption and minimal maintenance.
  - **End user:** Is there an AHU that requires no floor space and will give me comfort and performance with

low running cost?

- **Answer:** The compact Topvex False Ceiling range. It's exactly what you need!

## **EASY.**

- Simple selection and installation. Easy to connect configure and control via our latest Access control system – now with wireless communication!

## **QUICK.**

- Wide range of standardized units available for fast delivery. Can be installed and started up quickly.

## **COMPACT.**

Easy to fit or retrofit into the building. Minimum space required. Smooth delivery. Sustainability in all aspects of packaging, delivery, and logistics. Exactly what you need!

## **Looking for value for money?**

**You've found it!** We continuously gather feedback from consultants and installers in the HVAC sector to develop solutions that will make our customers' daily work easier. Our Topvex False Ceiling range is a good example. They take you to the next level of quality and offer real value for money!

## **WHAT'S SO DIFFERENT ABOUT TOPVEX FALSE CEILING UNITS?**

- **Three different variants of false ceiling units**
  - The Topvex false ceiling range is a cost-effective, space-saving choice with a wide range of sizes covering most airflows. The range includes three types of air handling units: versions with rotary heat exchangers (FR), with counterflow heat exchangers (FC), and units using pure supply air (FS).
- **Access control system with wireless communication**
  - Installed in the ceiling void, the AHU can be connected, configured, and controlled via an app on your computer, smartphone, or tablet. It is not necessary to physically reach the AHU to interact with it. This also makes installation and start-up easier.
- **Part of a larger product range**
  - Topvex false ceiling units come in a wide range, from small to big capacities, so you'll easily find the right unit(s) for your project. What's more, they are part of an even wider range of Topvex products, including floor-standing models. So if you're procuring air handling units for a larger project, you can be sure that air handling units from Systemair can meet your demands.
- **TOPVEX FALSE CEILING UNITS SOLVE THE SPACE PROBLEM**
  - The compact, flat design allows easy installation in ceiling voids
  - Ideal for small to mid-sized premises, including apartment blocks, offices, schools, shops, restaurants and light industrial premises

## **Topvex false ceiling units**

### **Topvex false ceiling units with pure supply air**

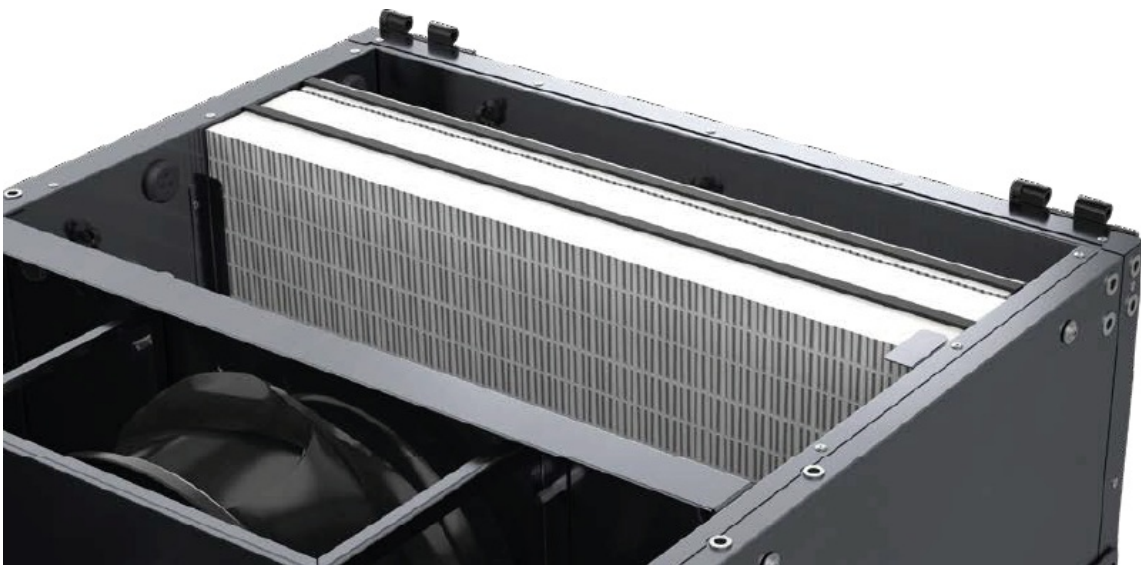
- **Designed for easy connection**

- Internal Modbus communication as the default
- Side-mounted Quick Connector (RJ-45) for external HMI or ethernet cable for connection to BMS system



- **Filters – easy access for simple maintenance**

- Access for filter maintenance from the bottom of the Topvex FS unit
- Filters should be replaced at least twice a year (our min. recommendation)
- Filter monitoring function gives notification when filters need replacing – avoids unnecessarily high operating cost
- Optional prefilter in supply air and exhaust air as an accessory, if the customer wants a higher filtration class or to protect the secondary filter
- Filter rails already mounted on the unit make it simple to upgrade by adding the panel filter accessory



- **Smooth easy temperature control**

- Heaters with stepless control
- The heater inside (two types of electrical or one water)



- **New casing offers sustainability**

- Casing in Magnesium Zinc/MgZn 310 (recycled steel)
- Outstanding corrosion resistance: three times better than galvanized steel
- Alloy's self-healing effect ensures excellent edge protection
- Environmentally friendly

- **TOPVEX FALSE CEILING UNITS**

- GOOD ENERGY EFFICIENCY, IMPRESSIVELY LOW NOISE LEVEL



### **Topvex false ceiling units with counter flow heat exchanger**

- **Designed for easy connection**

- Externally mounted connection box, housing all cables and electrical devices, allows quick, easy connection
- No need to open the unit in a standard situation
- The connection box has two lids, one for the connection of power supply and accessories, and one for



internal components (such as diff. pressure sensors, etc.)

- Internal Modbus communication as the default
- Side-mounted Quick Connector (RJ-45) for external HMI or ethernet cable for connection to BMS system



- **Filters – easy access for simple maintenance**

- Access for filter maintenance from the bottom and side of the Topvex FC unit
- Filters should be replaced at least twice a year (our min. recommendation)
- Filter monitoring function gives notification when filters need replacing – avoids unnecessarily high operating cost
- Optional prefilter in supply air and exhaust air as an accessory, if the customer wants a higher filtration class or to protect the secondary filter
- Filter rails already mounted on the unit make it simple to upgrade by adding the panel filter accessory





- **Smooth easy temperature control**

- Heaters with stepless control
- No heater inside thus faster, simpler maintenance, if needed. No need to access the unit
- 2 smaller sizes 230 V for single phase connection
- 2 bigger sizes 400 V for a phase connection

- **New casing offers sustainability**

- Casing in Magnesium Zinc/MgZn 310 (recycled steel)
- Outstanding corrosion resistance: three times better than galvanized steel
- Alloy's self-healing effect ensures excellent edge protection
- Environmentally friendly

## **TOPVEX FALSE CEILING UNITS HAVE GOOD ENERGY EFFICIENCY AND IMPRESSIVELY LOW NOISE LEVEL**

- Designed for very low SFP and convenient pressure in the duct systems
- Low energy use of the fan gives good performance in terms of energy efficiency
- Low running costs
- Casing with 30 mm insulation and hatches with 50 mm insulation, keep noise level low
- Avoids disturbing inhabitants or visitors to the building

## **Flexibility through accessories**

### **Flexibility through accessories takes the False Ceiling range to the next level**

While the Topvex False Ceiling unit is the core product, flexibility is ensured by a long list of accessories that take the range to the next level. Find these on our webpage or in our selection tool, the Systemair Configurator.

## **STANDARD TOPVEX FALSE CEILING ACCESSORY PORTFOLIO**

### **1. Duct cooler**

- Duct cooler with rectangular connections and cold water as an energy medium.

### **2. ZTV 2-way valve**

- 2-way valve to control hot and cold water in HVAC systems.

### **3. RVAZ4 24A Actuator**

- RVA is a range of valve actuators for the control of valves in the ZTV/ZTR, ZTVB/ZTRB range.

### **4. Air damper**

- Control dampers to manage effective airflow adjustments for ducts.

## 5. Sensors

- Effective air volume control for air handling units.
- Room or outdoor sensors for measuring temperature.
- Different versions are available, such as transmitter, presence detector, and room-, wall-, contact sensors.

## 6. VAV-kit

- Effective air volume control for air handling units.

## 7. Extract fan

- The roof fan series is built for continuous operation in demanding professional environments. The unit follows a horizontal exhaust design and is used for daily ventilation.

## 8. Heating coil

- Pre-heater is suitable for Topvex units with a counterflow heat exchanger.

## 9. Duct transition

1. Your duct connection has never been easier. Our FS units have a default square connection, however you can add the proper adaptor.

## 10. Condensate pump (electrical)

- Condensate water pump. The slim units were the main concept for this product, so forget the classic water lock and connect the perfect accessory to remove water from the unit in case of condensation.







#### • TOPVEX ACCESSORIES

- The entire Topvex accessory portfolio is available for the False Ceiling range, adding flexibility to the

ventilation solution.

## Access Control system

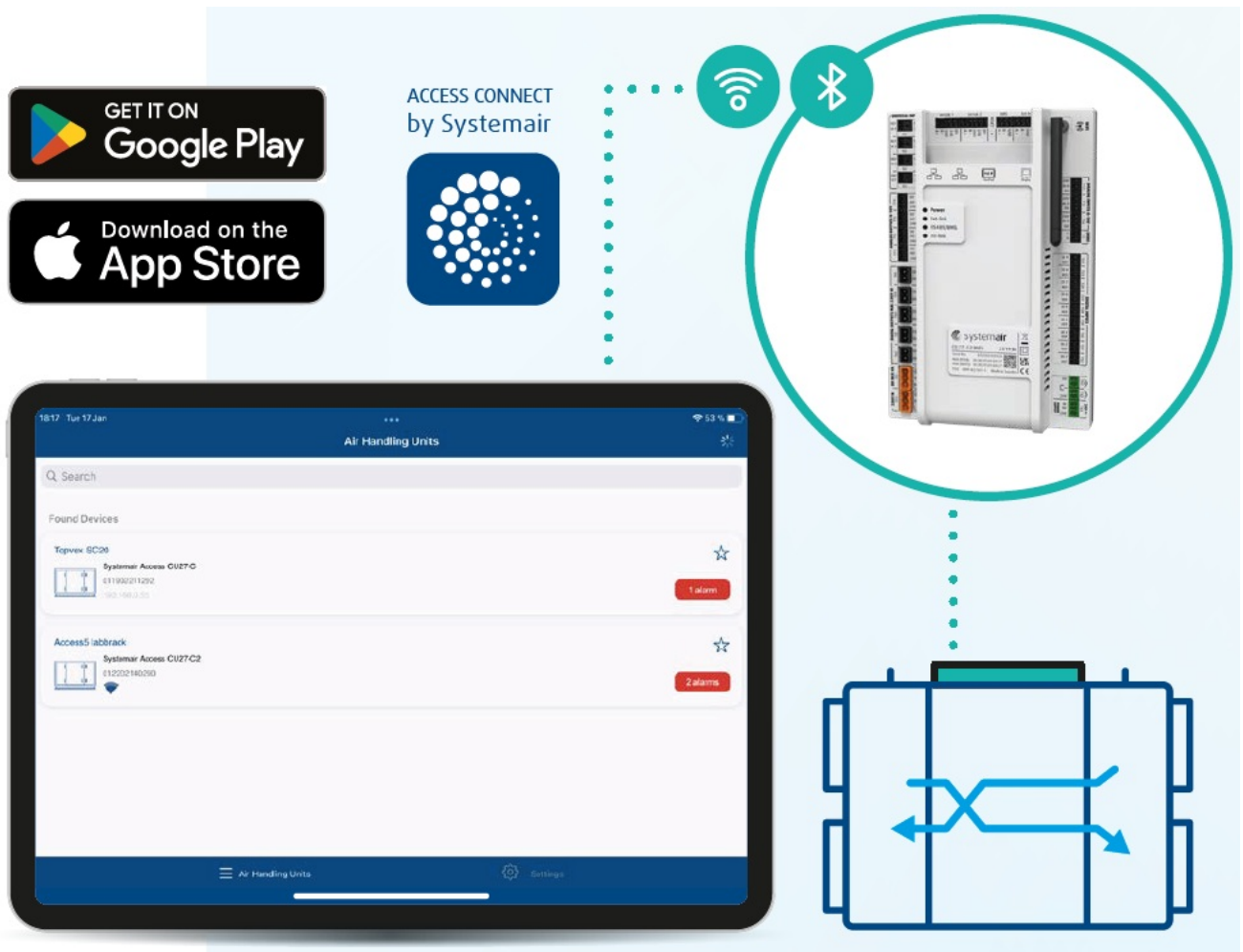
### Topvex False Ceiling units Access Control system Now with wireless communication!

While the Access Control System is the common platform for all Topvex models, the upgraded version installed in Topvex False Ceiling units is the latest, and it has wireless communication! Just download our user-friendly Access App on any IOS or Android device. You can then connect, configure, and control the Topvex FC/FS via the intuitive menu structure using the icons on the control panel. Thanks to Access, you don't need to be an expert to get optimum performance from your Topvex false ceiling unit.



**Download our user-friendly Access App**

- Designed for IOS and Android, the App automatically activates WiFi and BLE(Blue Tooth Low Energy) on any IOS or Android device.
- Bluetooth technology is integrated for easy "identification and pairing" of the device and the AHU. WiFi, with its higher data capability for data transfer, provides the best of both technologies. Combining WiFi and BLE in the Access control unit provides a robust plug-and-play solution.



### UPGRADED ACCESS USER INTERFACE (UI)

- The latest Access display offers improved user experience, visibility, and contrast. Monitor and control your

Topvex false ceiling unit by navigating the intuitive, logical menu structure via icons on the display.

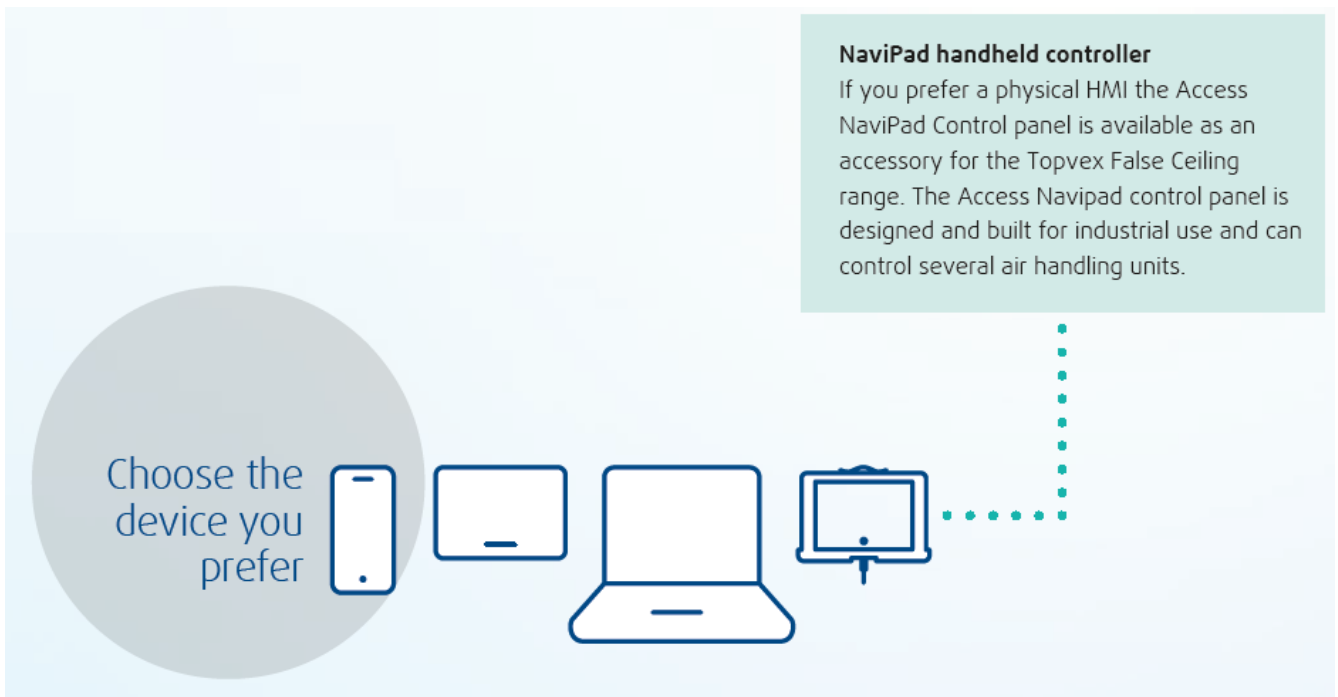


### BACnet fully integrated

- The primary protocol in the latest Access is BACnet B-BC.
- This provides rich functionality and a user-friendly graphical presentation.

### Time schedules

- An intuitive graphical user interface with flexible scheduling possibilities makes it easy for the user to plan and schedule the operation of the air handling unit.



## Access Application Tool

### Access Application Tool Easy upgrade, configuration, and commissioning record in “one-click”

- The PC-based Access Application Tool offers easy upgrade to the latest Access software, and backup and restore of configuration files.
- A commissioning record is automatically generated with “one-click” and the trend log function provides detailed historical data.



## ROOM UNIT

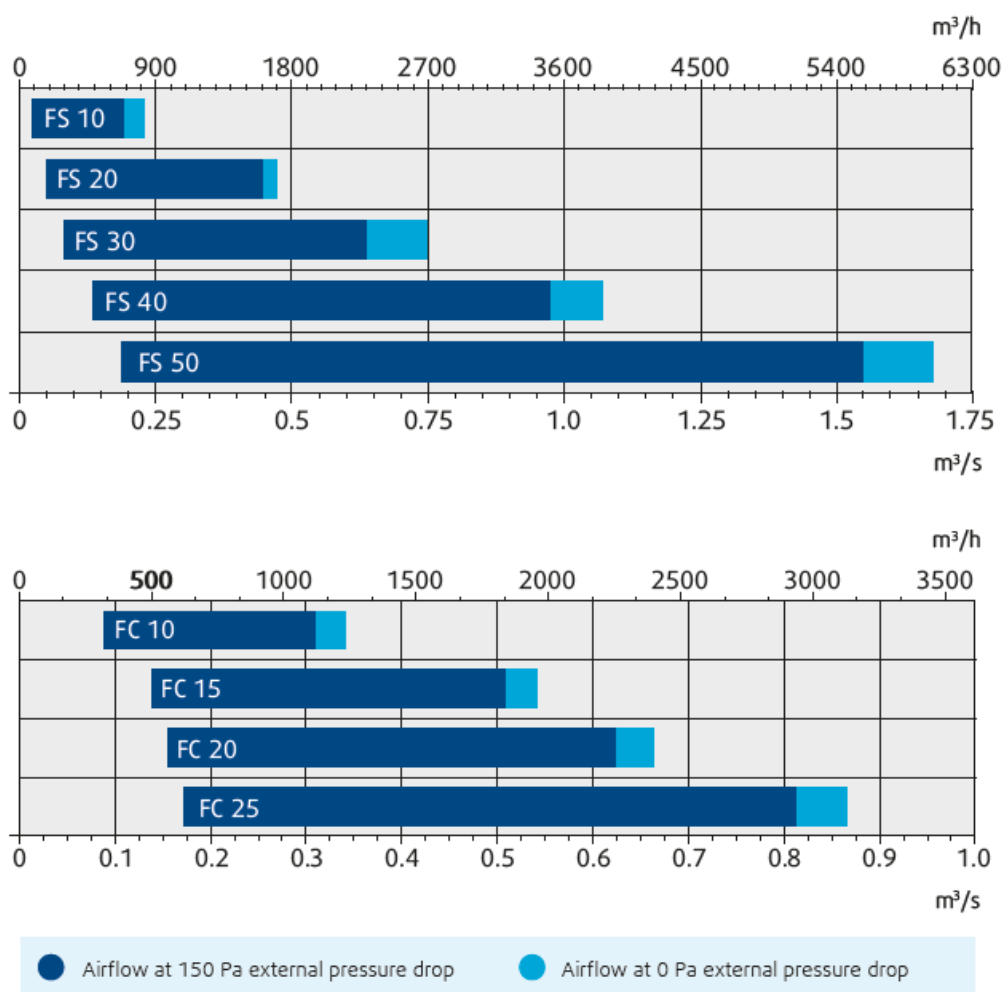
- Areas in the building with limited control needs?
- With the wall-mounted room unit ED-RUD, with a built-in temperature sensor, you can control a Topvex with the Access control system.

- The unit is ideal for conference rooms, reception halls, and other areas with limited control needs.



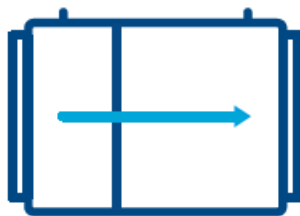
## Technical Data

### Min./max. airflow



## Topvex FS – Pure Supply

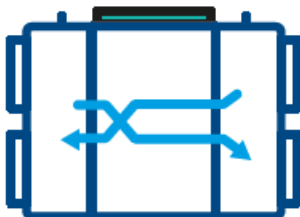
False Ceiling series with pure supply air for indoor installation.



| Overall product measurements |           |            |             |            |
|------------------------------|-----------|------------|-------------|------------|
| Side connection              | Duct size | Width [mm] | Height [mm] | Depth [mm] |
| FS 10                        | 300×150   | 500        | 344         | 1150       |
| FS 20                        | 400×200   | 600        | 392         | 1250       |
| FS 30                        | 500×250   | 700        | 432         | 1350       |
| FS 40                        | 600×300   | 800        | 502         | 1250       |
| FS 50                        | 800×350   | 1000       | 552         | 1250       |

### Topvex FC – Counterflow

False Ceiling series with counterflow heat exchanger for indoor installation.



| Overall product measurements |           |            |             |            |
|------------------------------|-----------|------------|-------------|------------|
| Side connection              | Duct size | Width [mm] | Height [mm] | Depth [mm] |
| FC 10                        | 400×200   | 1700       | 360         | 1030       |
| FC 15                        | 500×250   | 1800       | 401         | 1400       |
| FC 20                        | 500×250   | 1900       | 484         | 1490       |
| FC 25                        | 600×350   | 2200       | 598         | 1450       |

[www.systemair.com](http://www.systemair.com). Systemair Sweden AB · April 2024

### Documents / Resources





## [systemair Topvex False Ceiling units](#) [pdf] Installation Guide

Topvex False Ceiling units, Topvex False Ceiling units, False Ceiling units, Ceiling units, units

## References

- [User Manual](#)

### Manuals+, Privacy Policy

This website is an independent publication and is neither affiliated with nor endorsed by any of the trademark owners. The "Bluetooth®" word mark and logos are registered trademarks owned by Bluetooth SIG, Inc. The "Wi-Fi®" word mark and logos are registered trademarks owned by the Wi-Fi Alliance. Any use of these marks on this website does not imply any affiliation with or endorsement.