



SYSTEM Q SEE708 NiteDevil 24C Camera Instruction Manual

[Home](#) » [SYSTEM Q](#) » SYSTEM Q SEE708 NiteDevil 24C Camera Instruction Manual 



SYSTEM
YOURTAGLINE

Q SEE708 NiteDevil 24C Camera
Instruction Manual





Contents

- [1 Introduction](#)
- [2 Tools & Handy Extras](#)
- [3 Connections](#)
- [4 OSD Menu](#)
- [5 Audio Over COAX](#)
- [6 Troubleshooting](#)
- [7 General Maintenance](#)
- [8 Specification](#)
- [9 Conditions](#)
- [10 Documents / Resources](#)
 - [10.1 References](#)
- [11 Related Posts](#)

Introduction

1.1 SEE708

The all-new NiteDevil® 24C can stay in full color around the clock using a minimal amount of natural light to produce superb full-color images. It really is a game changer in performance and should be used as a part of any CCTV system requiring full-color images in key areas around entrances etc.

With built-in dual IR and white light you can choose how the camera best works in your installation.

Using white light to give visual warning or using IR illumination to get a more discreet setup.

Tools & Handy Extras

Screwdriver

Drill

12V DC PSU

Drill bits

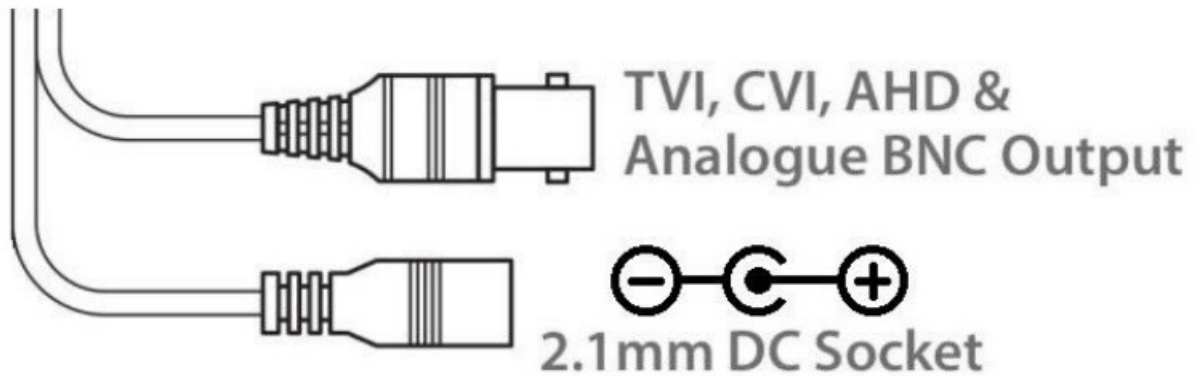
BNC Crimp Tool & BNCs

RG59 Coax Cable

Digital Multi-Meter

LCD400K – CCTV Test monitor

Connections



The camera has a 2.1mm socket which requires 12V DC, use a regulated power supply rated above the current draw of the camera.

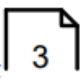
The camera is polarity sensitive so connections must be correctly made.

The camera has a standard BNC connector for video output, the output can be changed to AHD, CVI, or CVBS if required in the menu

4-In-1 Technology

Selectable HD-TVI, HD-CVI, AHD, and CVBS (Analogue) Output. As default the camera is set to HD-TVI, however, the output can be changed to AHD, CVI or CVBS if required.

This output can be changed within the menu camera. Please note the "Mode" in the menu of the DVR won't change the format, as the menu overrides the output.

See OSD:  Menu for accessing and changing the video format.

OSD Menu

Access to the camera menu is by Coaxitron. For the ZIP DVRs, ZIP Coaxitron is set as default.

To access the Cameras Menu via coalition:-



1. Click on the image in Live view
2. Click on the PTZ button at the bottom of the screen
3. Click on the IRIS + / center button to display the menu



Use the directional arrows to move up and down through the menu.
Use the directional arrows left and right to change the option.
Use IRIS + to select & enter that menu option.

5.1 8MP OSD Menu

Video Mode	TVI / AHD / CVI / CVBS	
Format	60Hz / 50Hz / NTSC / PAL	
Language	English / Spanish / French / Chinese	
Exposure	Exposure Mode	Global
	AGE	High / Middle / Low
	Back	
	Exit	
	Save — Exit	
Day & Night	Mode	Ext / Color / BAY
	Dim	0 — 3 (3 Default)
	Back	
	Exit	
	Save — Exit	
Video Settings	WEB	Auto
	Brightness	1 -9 (5 Default)
	Contrast	1 -9 (5 Default)
	Sharpness	1 -9 (5 Default)
	Saturation	1 -9 (5 Default)
	NR	1 -9 (5 Default)
	Mirror	Default / Mirror / Flip / Rotate
	Back	
	Exit	
	Save — Exit	
Volume	0 — 9 (9 Default)	
Reset		
Exit		
Save — Exit		

5.2 Key Menu Settings

Exposure Mode – AUTO / GLOBE / GLOBAL sets the required shutter speed for the current light level. The shutter speed will automatically detect the required length of time to keep the digital sensor exposed to light. FLK option sets the shutter speed to stop synchronization with lighting so that the pulsing effect is minimized.

White Balance – Colour adjustment of the camera to be set up so objects appear a natural color. ATW / PRO (Automatic tracking white balance) continually tracks and adjusts the white balance, making it suitable for use in cameras in which the image content and lighting are subject to changes.

Day & Night – The camera can be set to color or B&W mode or have it automatically switch External is set as default, and the switch between color and black & white is controlled by an external trigger In this a light-dependent resistor.

DNR (Noise Reduction) – Noise Reduction is the process of removing noise from the video signal by applying a digital filter. 2D noise reduction reduces noise in the foreground of the image whereas 3D noise reduction reduces noise in both the foreground and the background of the image.

D-WDR – Digitally adjusts the exposure in areas of the frame to maintain optimum levels in both the dark and bright areas of an image.

NOTE – Some models may not have the D-WDR function.

Reset – Defaults the camera to factory settings. This setting helps when fault-finding issues with the camera to ensure all settings default.

Audio Over COAX

As of writing this

, the Audio over COAX (Coaxial Audio) is compatible with the ZIP SUPA-S range of recorders.

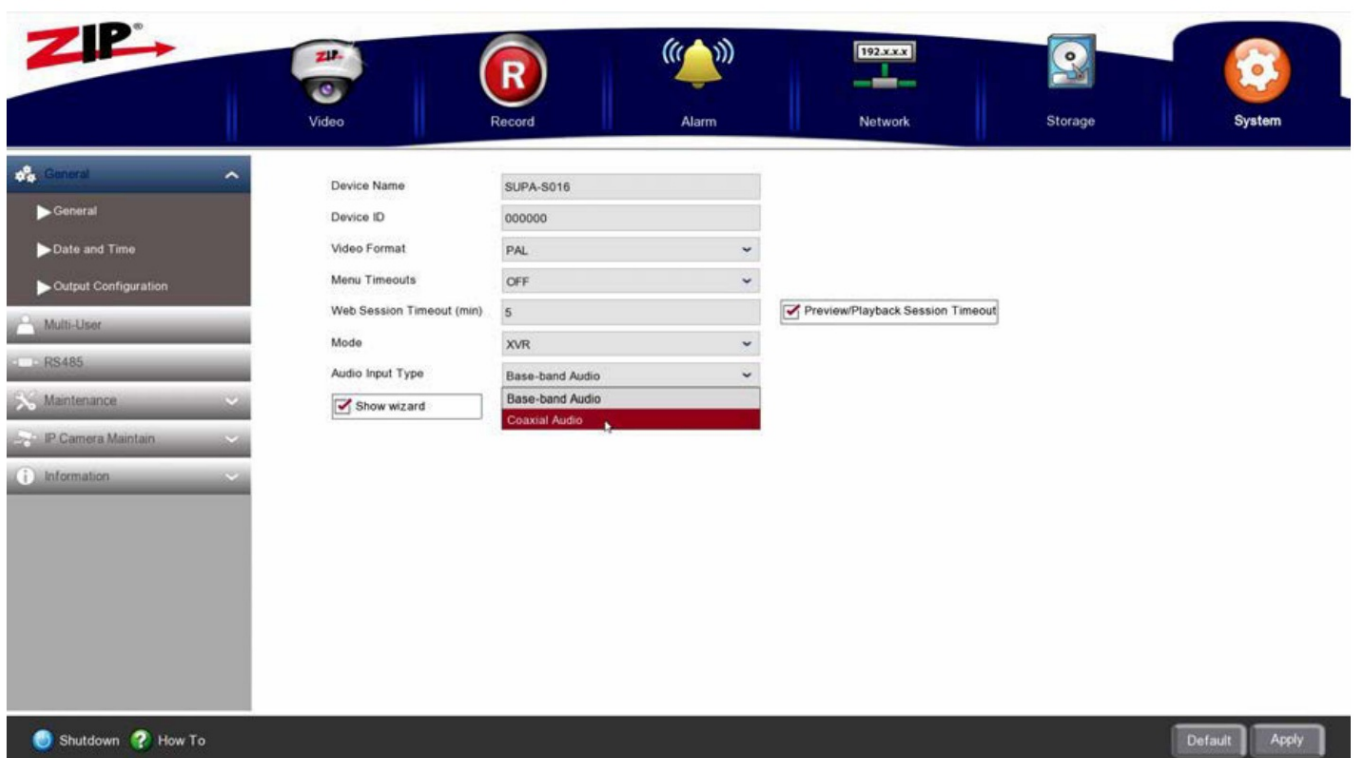
(March 2022)

*Note the standard SUPA recorders are not compatible with Audio over COAX.

To enable, in the menu on the SUPA-S go to System > General > Audio Input Type

Select Coaxial Audio

Select Apply



Troubleshooting

7.1 Camera Rebooting / Turning Off

A. Check the voltage to the camera (under load) using a digital multi-meter, if below 10.8V then move the power supply closer to the camera.

B. For 12V DC cameras, only use a regulated power supply rated above the current consumption, so that the camera is always receiving the correct supply which is rated the current consumption.

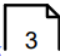
C. Use thicker gauge copper cabling to reduce the voltage drop to the camera, using thicker cable will reduce the resistance between the camera and the power supply and therefore reduce the voltage dropped along the cable.

7.2 Poor Quality Images

A. Check the video format of the DVR (digital video recorder), then set the camera to the relevant video format –

see the **4-In-1 Technology**  2

B. If set to CVBS, then this is a low-quality video output for legacy systems (analog – CVBS), when using a 2 MegaPixel DVR or above then use another video format, like HD-TV.

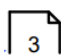
C. Reset the camera menu via Zip Coaxitron – **OSD Menu**  3

D. Check if the DVR (digital video recorder) supports the resolution of the camera.

7.3 Image is Black & White

A. Check the video format your DVR supports, then set the camera to the relevant video format – see the **4-In-1**

Technology  2

B. Reset the camera menu via Zip Coaxitron **OSD Menu**  3

D. Check if the DVR (digital video recorder) supports the resolution of the camera.

7.4 NCD / No Image Displayed on Recorder

A. Check the voltage to the camera (under load) using a digital multi-meter, if below 10.8V then move the power supply closer to the camera.

B. For 12V DC cameras, only use a regulated power supply rated above the current consumption, so that the camera is always receiving the correct supply which is rated the current consumption.

C. Use thicker gauge copper cabling to reduce the voltage drop to the camera, using thicker cable will reduce the resistance between the camera and the power supply and therefore reduce the voltage dropped along the cable.

D. Ensure that the BNC – BNC lead that is connected between the camera and DVR has no shorts between the ground and the center core (positive) or open circuits along the center core (positive) or open circuits along the ground.

General Maintenance

Routinely clean the camera to prevent dust build-up as this can affect the performance of the camera. It is recommended to use a damp non-abrasive microfibre cloth.

Routinely check the connections for power and data to ensure no water ingress and corrosion.

Check that the cameras are firmly attached to the wall or mounting bracket.

Check playback in the recorder to ensure the camera is recording and triggering properly.

Specification

9.1 SEE708

Resolution	4K (8MP)
Lens Type	2.8mm Fixed Lens
Image Output	1 Volt Peak-Peak 75 ohm
MinIllumination	0 Lux IR On
Day/Night	24C / Mechanical IR (True Day-Night)
InfraRed LEDs	2 White LEDs / 2 IR LEDs
IR Range	20M
Audio	Built-In Mic (Audio over COAX)
Input Voltage	12V DC
Current Consumption	300mA (IR On)
IP Rating	IP66
Video Connection	BNC Socket
Power Connection	2.1mm DC Socket
Finish	White/ Black
Build	Metal
Dimensions	100mm (Diameter) x 90 mm (Height)

Conditions

10.1 General Company Disclaimer

All specifications are approximate. System Q Ltd reserves the right to change any product specifications or features without notice. Whilst every effort is made to ensure that these instructions are complete and accurate, System Q Ltd cannot be held responsible in any way for any losses, no matter how they arise, from errors or omissions in these instructions, or the performance or nonperformance of the equipment that these instructions refer to.

10.2 WEEE Declaration



This symbol on the products and/or accompanying documents means that used electronic equipment must not be mixed with general household waste. For treatment, recovery, and recycling please return this unit to your trade supplier or local designated WEE/CG0783SS collection point as defined by your local council.


10.3 Copyright

© Copyright 2022

Zip is a registered trademark of System Q Ltd, Chesterfield. Derbyshire. S40 2WB

NiteDevil.com

Documents / Resources

 <p>Instruction Manual NiteDevil 24C Camera SEE708 2MP FullHD Color Night Vision www.system-q.com NiteDevil.com</p>	<p>SYSTEM Q SEE708 NiteDevil 24C Camera [pdf] Instruction Manual SEE708 NiteDevil 24C Camera, SEE708, NiteDevil 24C Camera</p>
--	--

References

- [🌐 NiteDevil: CCTV Cameras That See In The Dark!](#)
- [🌐 NiteDevil: CCTV Cameras That See In The Dark!](#)

Manuals+