



# System Loco P4P System Tag User Guide

[Home](#) » [System Loco](#) » System Loco P4P System Tag User Guide 

## Contents

- 1 System Loco P4P System Tag
- 2 Specifications
- 3 Product Information
- 4 Frequently Asked Questions
- 5 Introduction
- 6 Device Characteristics
- 7 Getting Started – in the Field
- 8 Batteries
- 9 Environmental Considerations
- 10 Documents / Resources
  - 10.1 References



## System Loco P4P System Tag



## Specifications

- Product Name: LocoTag P4P
- Document Version: 0.0.1
- Date: 04/09/2024

## Product Information

The LocoTag P4P is a non-rechargeable single-use device designed for asset tracking and supply chain management across various industries. It offers flexibility and seamless integration with the LocoAware platform for efficient tracking.

## Installation and Asset Association

The installation process of the LocoTag P4P is straightforward:

1. Peel off the tab to activate the device.
2. Snap off the tab to switch it on.
3. Peel back the label to reveal the sticky pad and fix it firmly on the asset you want to track.

**Caution:** Once attached, removal and reattachment may be difficult. Once the tab is snapped off, the device cannot be switched off and will run continuously.

## Device Association

Each LocoTag P4P comes with a unique identifier presented as a number and barcode on its label. To associate the device:

1. Scan the barcode and enter a name for the asset on the LocoAware platform.
2. The LocoAware platform allows users to search for assets by name or device ID.
3. API integration with the platform offers alternative methods for association.

## Getting Started – in the Field

1. **Step 1:** Activate the device by snapping off the tab, associating it, and attaching it to the asset.
2. **Step 2:** Bring the device within range of a LocoTrack enabled device with ranges of 20m indoors and 80m outdoors.

## Frequently Asked Questions

- **Q: Can I reuse the LocoTag P4P after detaching it from an asset?**
  - A: The LocoTag P4P is designed for single-use and may not function optimally if detached and reattached to another asset.
- **Q: How can I extend the functionality of the LocoTag P4P?**
  - A: Contact your sales representative about the System Loco Track Application, which enhances the LocoAware platform functionality for comprehensive asset tooling, reporting, maintenance scheduling, and more.

## Introduction

### How the System Works

The non-rechargeable single-use LocoTag P4P is extremely flexible, forming part of many turnkey solutions in asset tracking and supply chain management, across multiple industries. As part of a high value supply chain solution, individual goods can be tracked both during transit and as they leave and enter warehouses. Business logic and alerting can manage an individually tracked item that no longer reports its presence on a journey. Using the flexibility of the P4P and LocoTrack devices, along with the LocoAware platform, the use cases are limitless.

### Installation and Asset Association

The P4P is designed to be extremely easy to use with the speed of installation in mind. The tags are pre-configured and are only configurable at build time to ensure their simplicity and their behaviour is predictable and assured.

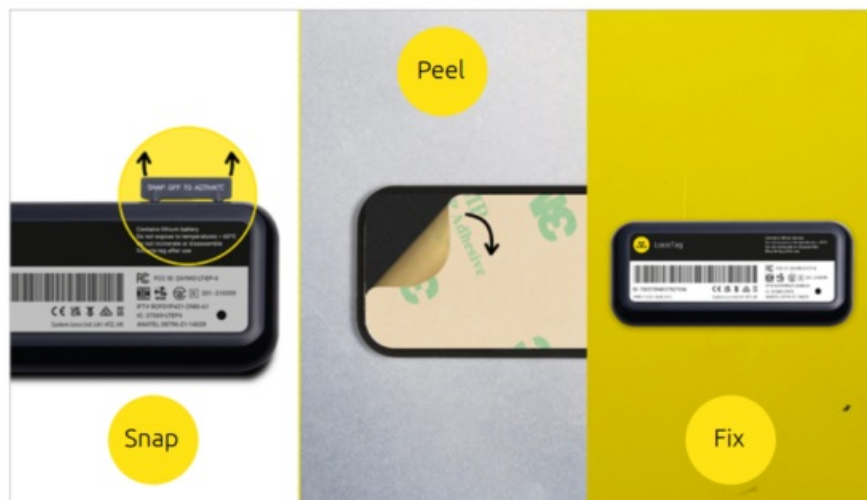


Fig 1. Simply snap off the tab, peel the backing off to reveal the sticky pad and fix in place.

To use the device, snap off the tab to switch it on, peel back the label on the on back and fix it firmly in place on the asset you wish to track.

- Caution: Once the device is attached, it may be difficult to remove and reattach
- Caution: Once the tab is snapped off; the device cannot be switched off again and will run continuously.

Each LocoTag P4P has a unique identifier that is presented as a number and a barcode on its label.



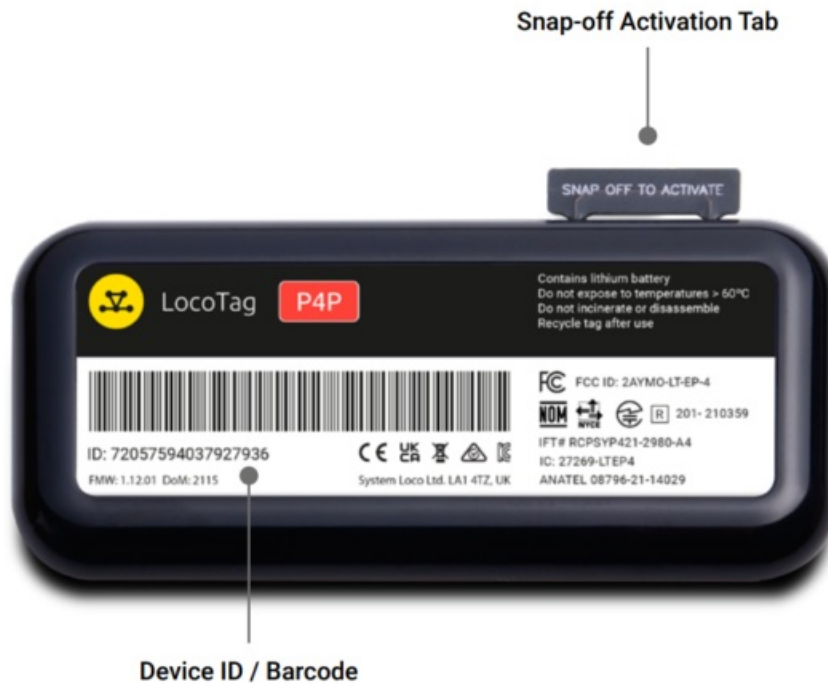
Fig 2. An image of the LocoTag P4P with the device ID and barcode highlighted.

- The association is completed by scanning this barcode and entering a name for the asset on the LocoAware

platform. Once associated, the LocoAware platform allows a user to search for a specific asset by asset name or by device ID.

- If you have an API integration with the LocoAware platform, you may have an alternative method of associating the LocoTag P4P with the desired asset (such as a mobile app or existing device/scanning unit). Consult your administrator for more information.
- If you require comprehensive asset tooling, including reporting, maintenance scheduling and more, contact your sales representative about the System Loco Track Application which extends the LocoAware platform functionality

## Device Characteristics



## Getting Started – in the Field

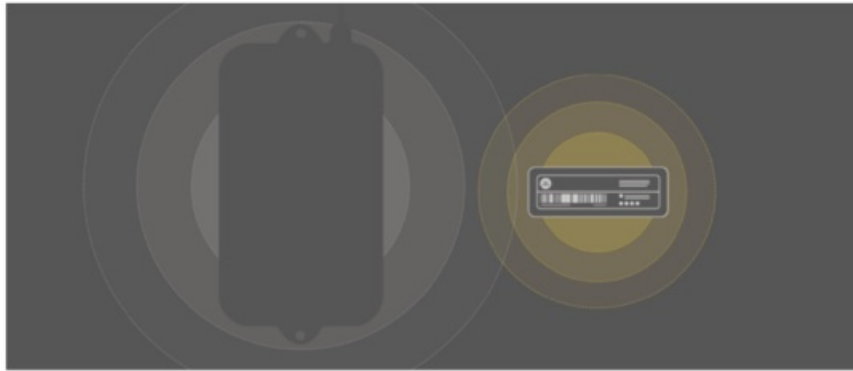
### Step 1

#### Activation

Once you have snapped the tab off, associated the LocoTag P4P and stuck it to the asset, you are ready to go. It will already be switched on and will have begun to log data automatically.

### Step 2

Bring the device within range of a LocoTrack enabled device



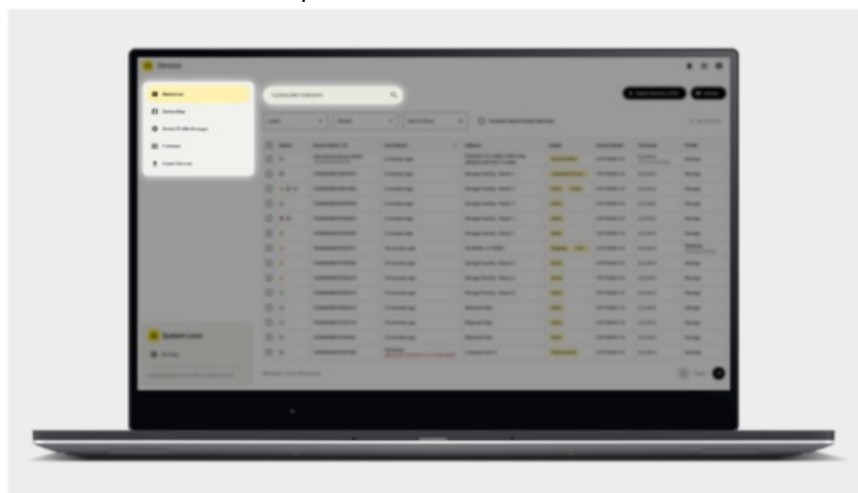
A LocoTrack device can be enabled as a hub depending on its device profile setting / use case.

**The LocoTag P4P has a range of:**

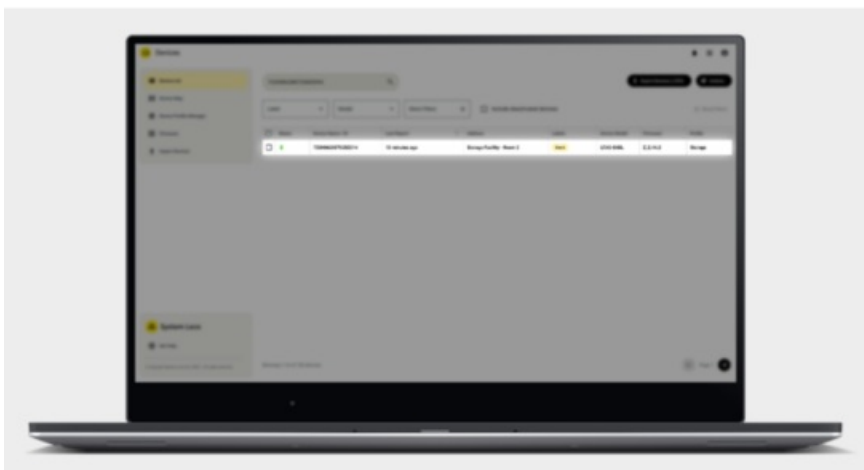
- 20m (65.6ft) indoors
- 80m (262.5ft) outdoors

### Step 3

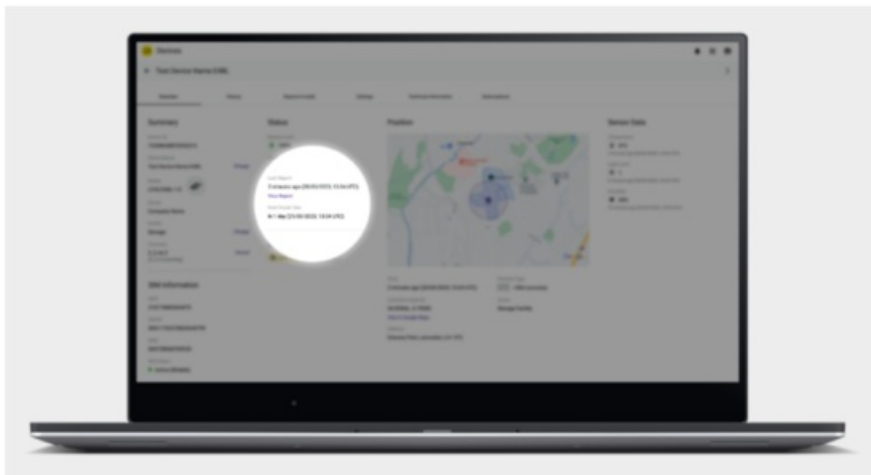
Confirm on LocoAware that the device has reported to the server



Find your device on [www.locoaware.com](http://www.locoaware.com) by entering the Device ID / Barcode number into the search field



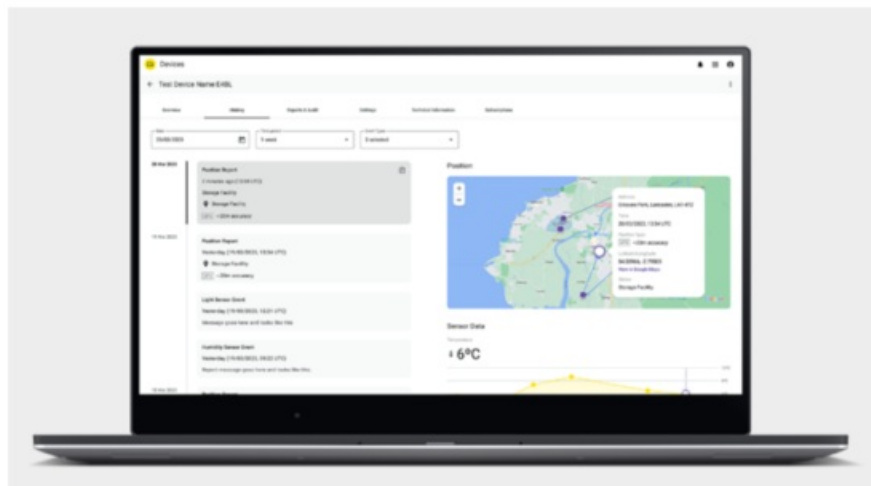
Select the device from the list of search results.



Confirm that the last report time is current with the device's details page.

#### Step 4

#### Monitor the device



Monitor the device from within the LocoAware platform or via the API if integration has been completed.

#### Step 4

Monitor the device

For information on API integration please visit:

- <https://locoaware.com/apidocs/index>

#### Batteries

The unit uses a 320mAh primary battery (non-rechargeable)

- Do not expose to temperatures >60°C (140°F)
- Do not incinerate or disassemble
- Recycle after use

## Certifications

## Countries


This product has been certified to the following standards: FCC, UKCA, RAMATEL, RCM, ANATEL, IC/ISED, SUBTEL, CRC, SUTEL, CE, RoHS, WEEE, OFCA, WPC, MoC, Giteki, CITRA, NOM/NYCE/IFETEL, ASEP, CRA, CST, IMDA, ICASA, KC, NCC, NBTC, URSEC

## Environmental Considerations

The equipment may contain substances that are harmful to the environment or human health. Please recycle this unit appropriately. Please contact your local authority for disposal or recycling information

- [www.systemloco.com](http://www.systemloco.com)

## Documents / Resources

	<a href="#">System Loco P4P System Tag</a> [pdf] User Guide P4P System Tag, P4P, System Tag, Tag
--	---

## References

- [LocoAPI Documentation](#)
- [User Manual](#)

[Manuals+](#), [Privacy Policy](#)

This website is an independent publication and is neither affiliated with nor endorsed by any of the trademark owners. The "Bluetooth®" word mark and logos are registered trademarks owned by Bluetooth SIG, Inc. The "Wi-Fi®" word mark and logos are registered trademarks owned by the Wi-Fi Alliance. Any use of these marks on this website does not imply any affiliation with or endorsement.