

## System Loco P4B Loco Tag



# System Loco P4B Loco Tag User Guide

[Home](#) » [System Loco](#) » System Loco P4B Loco Tag User Guide 

### Contents

- [1 System Loco P4B Loco Tag](#)
- [2 Specifications](#)
- [3 Product Usage Instructions](#)
- [4 Introduction](#)
- [5 Device Characteristics](#)
- [6 Getting Started – in the Field](#)
- [7 Batteries](#)
- [8 Certifications](#)
- [9 Environmental Considerations](#)
- [10 Frequently Asked Questions](#)
- [11 Documents / Resources](#)
  - [11.1 References](#)



**System Loco P4B Loco Tag**



## Specifications

- **Product Name:** LocoTag P4B
- **Document Version:** 0.0.1
- **Date:** 04/09/2024
- **Unique Features:** Snap-off Activation Tab, Device ID/Barcode

## Product Usage Instructions

### Installation and Asset Association

The LocoTag P4B is designed for easy installation and asset association:

1. Peel off the tab to switch on the device.
2. Peel the backing off to reveal the sticky pad.
3. Fix the device firmly in place on the asset you wish to track.

**Caution:** Once attached, the device may be difficult to remove and reattach. Once the tab is snapped off, the device cannot be switched off again.

### Device Association

Each LocoTag P4B has a unique identifier presented as a number and barcode on its label:

1. Scan the barcode and enter a name for the asset on the LocoAware platform.
2. The LocoAware platform allows searching for assets by name or device ID.
3. For API integration, consult your administrator for alternative association methods.

## Getting Started – in the Field

1. **Step 1:** Activate the device by snapping the tab off, associating it, and sticking it to the asset.
2. **Step 2:** Bring the device within range of a LocoTrack-enabled device with a range of 20m indoors and 80m outdoors.

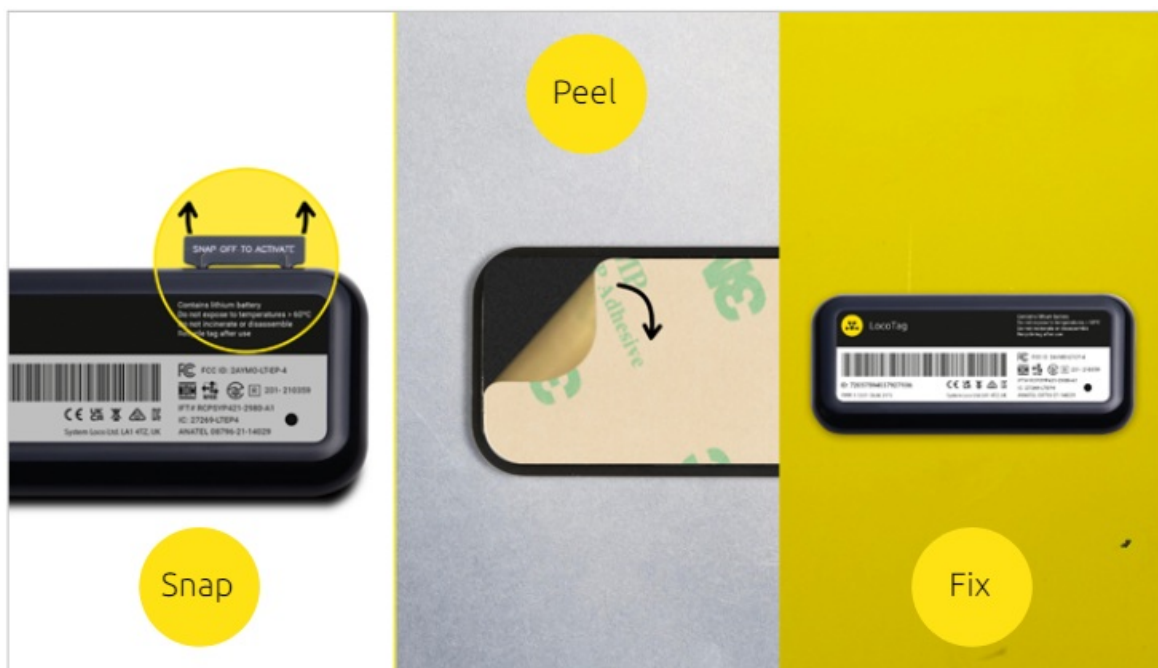
## Introduction

## How the System Works

- The non-rechargeable single-use LocoTag P4B is extremely flexible, forming part of many turnkey solutions in asset tracking and supply chain management, across multiple industries.
- As part of a high-value supply chain solution, individual goods can be tracked both during transit and as they leave and enter warehouses. Business logic and alerting can manage an individually tracked item that no longer reports its presence on a journey.
- Using the flexibility of the P4B and LocoTrack devices, along with the LocoAware platform, the use cases are limitless.

## Installation and Asset Association

The P4B is designed to be extremely easy to use with the speed of installation in mind. The tags are pre-configured and are only configurable at build time to ensure their simplicity and their behaviour is predictable and assured.



*Fig 1. Simply snap off the tab, peel the backing off to reveal the sticky pad and fix in place.*

To use the device, snap off the tab to switch it on, peel back the label on the on back and fix it firmly in place on the asset you wish to track.

- **Caution:** Once the device is attached, it may be difficult to remove and reattach
- **Caution:** Once the tab is snapped off; the device cannot be switched off again and will run continuously.

Each LocoTag P4B has a unique identifier that is presented as a number and a barcode on its label.



- The association is completed by scanning this barcode and entering a name for the asset on the LocoAware platform. Once associated, the LocoAware platform allows a user to search for a specific asset by asset name or by device ID.
- If you have an API integration with the LocoAware platform, you may have an alternative method of associating the LocoTag P4B with the desired asset (such as a mobile app or existing device/scanning unit). Consult your administrator for more information.
- If you require comprehensive asset tooling, including reporting, maintenance scheduling and more, contact your sales representative about the System Loco Track Application which extends the LocoAware platform functionality.

## Device Characteristics

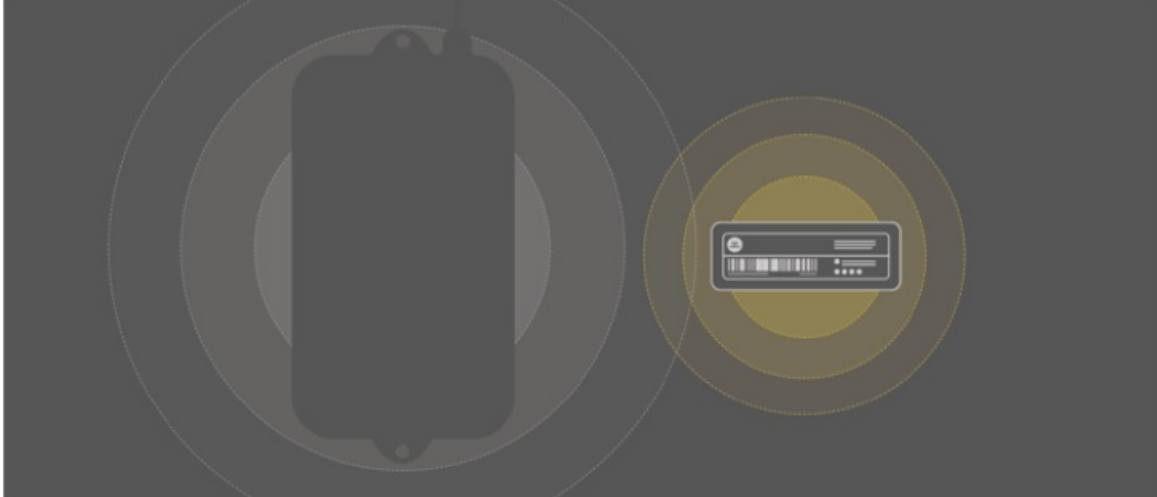


## Getting Started – in the Field

### Step 1: Activation

Once you have snapped the tab off, associated the LocoTag P4B and stuck it to the asset, you are ready to go. It will already be switched on and will have begun to log data automatically.

### Step 2: Bring the device within range of a LocoTrack-enabled device

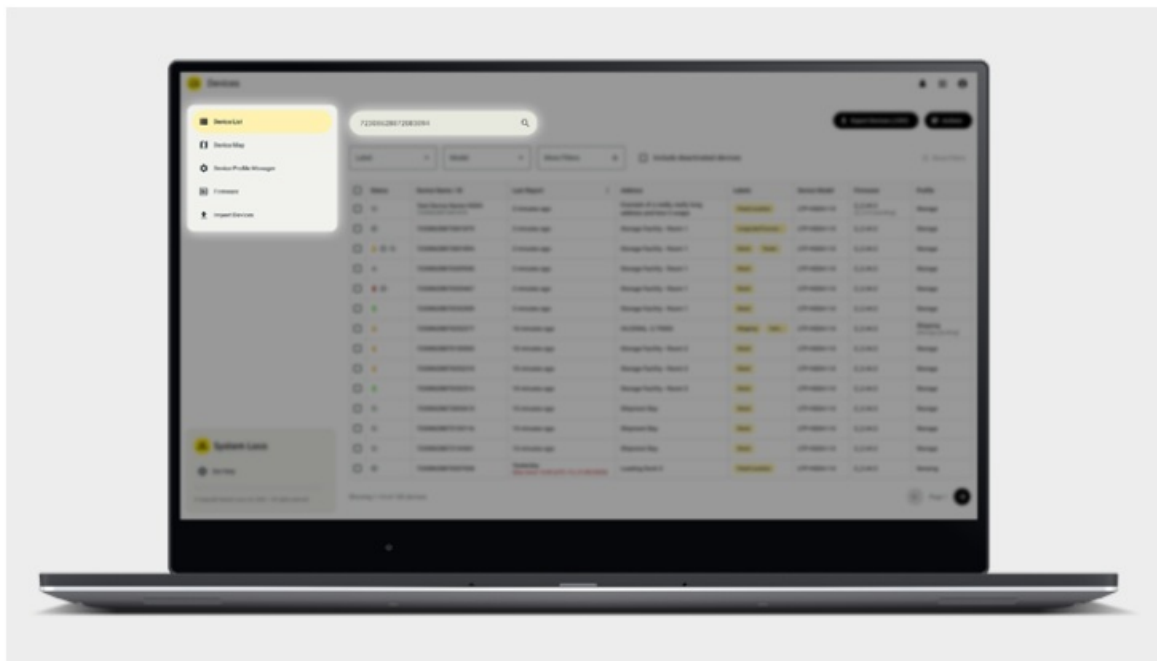


A LocoTrack device can be enabled as a hub depending on its device profile setting/use case.

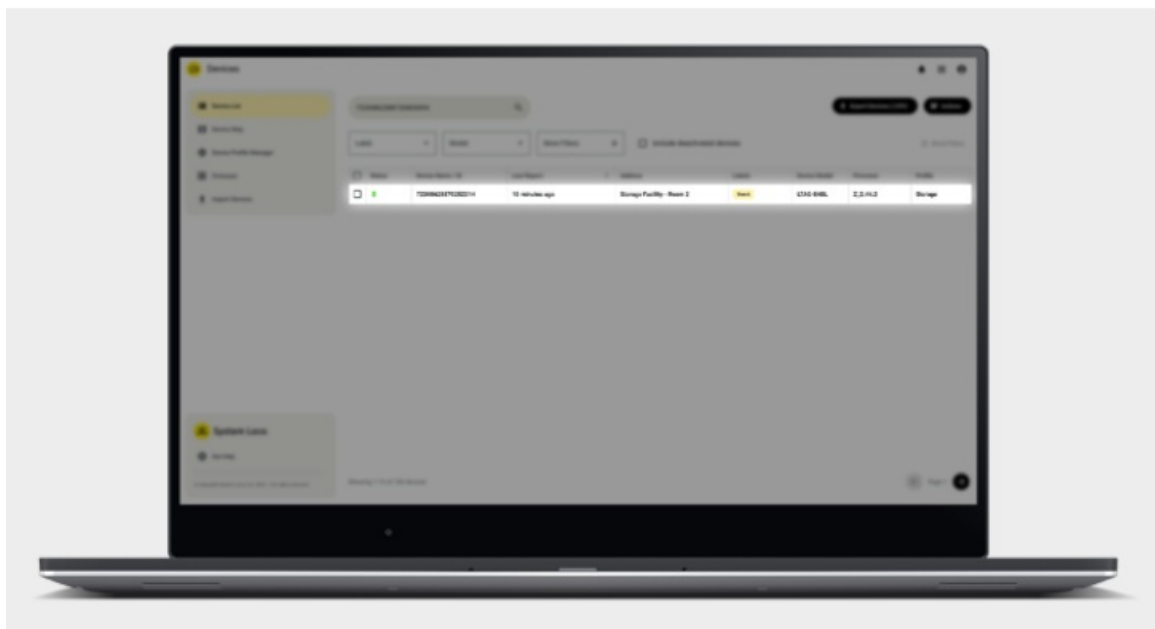
### The LocoTag P4B has a range of:

- 20m (65.6ft) indoors
- 80m (262.5ft) outdoors

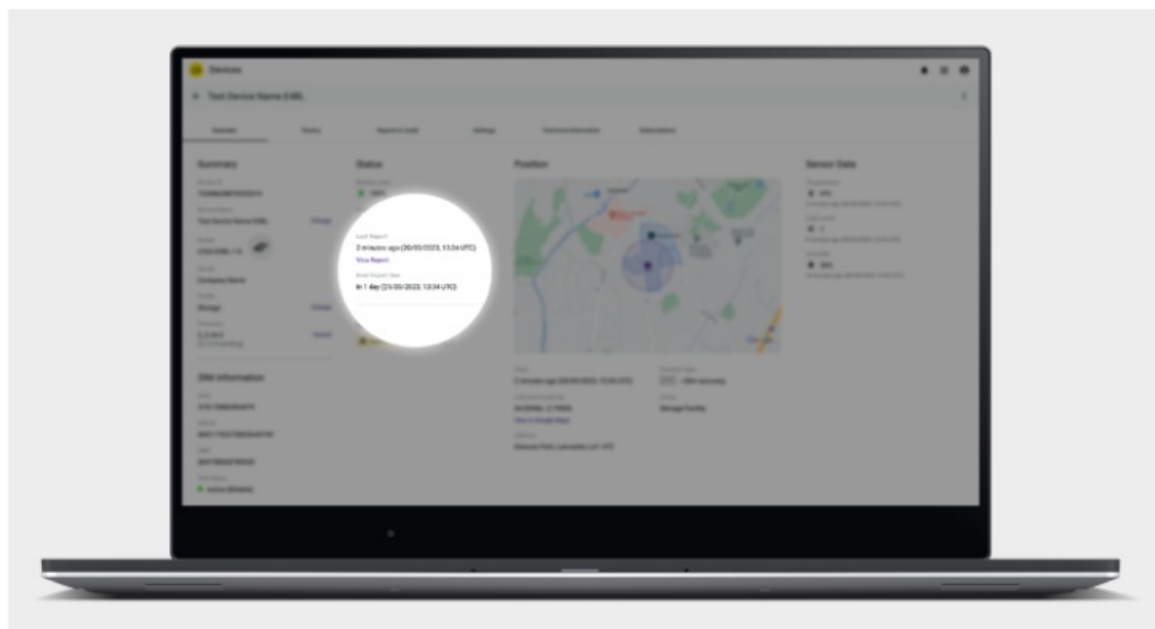
### Step 3: Confirm on LocoAware that the device has reported to the server



Find your device on [www.locoaware.com](http://www.locoaware.com) by entering the Device ID / Barcode number into the search field.

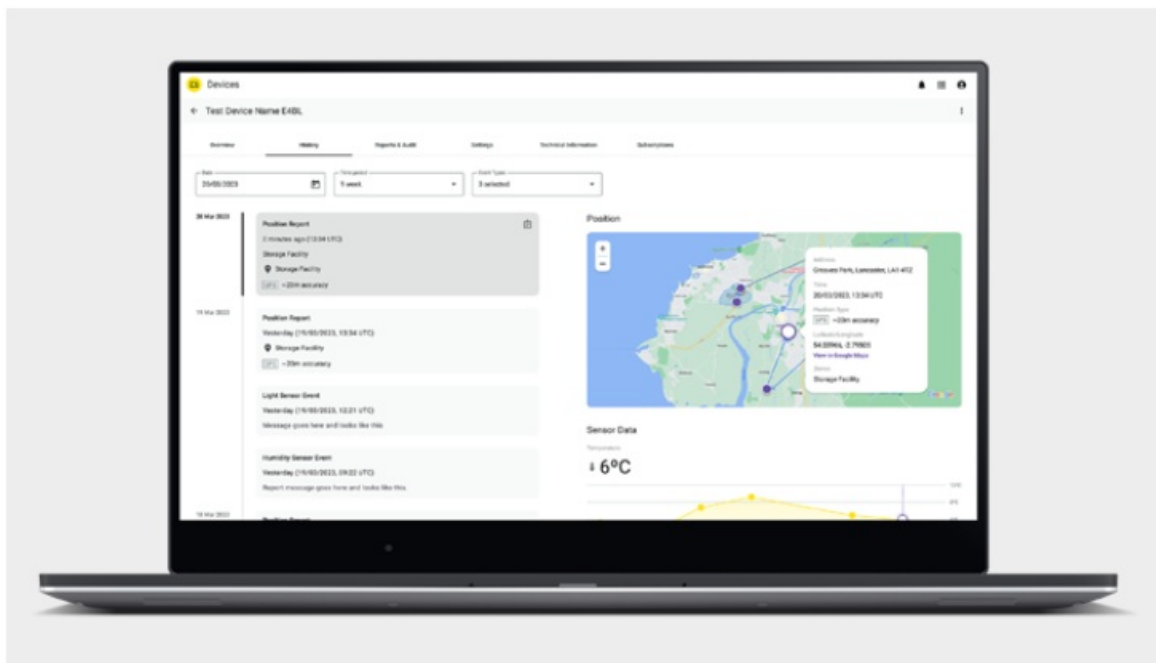


Select the device from the list of search results.



Confirm that the last report time is current with the device's details page.

**Step 4:** Monitor the device



Monitor the device from within the LocoAware platform or via the API if integration has been completed.

**info:** For information on API integration please visit: <https://locoaware.com/apidocs/index>

## Batteries

The unit uses a 320mAh primary battery (non-rechargeable)

- Do not expose to temperatures >60°C (140°F)
- Do not incinerate or disassemble
- Recycle after use

## Certifications

### Countries

- This product has been certified to the following standards:
- FCC, UKCA, RCM, ANATEL, IC/ISED, SUBTEL, CE, RoHS, WEEE, OFCA, WPC, Giteki, NOM/NYCE/IFETEL, IMDA, KC, NCC, NBTC

## Environmental Considerations

The equipment may contain substances that are harmful to the environment or human health. Please recycle this unit appropriately. Please contact your local authority for disposal or recycling information.

Mandatory Warnings

[www.systemloco.com](http://www.systemloco.com)

Document Version: 0.0.1

## Frequently Asked Questions


- **Q: Can the LocoTag P4B be reused?**

- A: No, the LocoTag P4B is a non-rechargeable single-use device.

- **Q: How can I track assets using the LocoTag P4B?**

- A: Install the device on the asset, associate it with a unique identifier on the LocoAware platform, and bring it within range of a LocoTrack-enabled device for tracking.

## Documents / Resources

	<a href="#">System Loco P4B Loco Tag</a> [pdf] User Guide P4B Loco Tag, Loco Tag, Tag
---	--

## References

- [👤 LocoAPI Documentation](#)
- [User Manual](#)

[Manuals+](#), [Privacy Policy](#)

This website is an independent publication and is neither affiliated with nor endorsed by any of the trademark owners. The "Bluetooth®" word mark and logos are registered trademarks owned by Bluetooth SIG, Inc. The "Wi-Fi®" word mark and logos are registered trademarks owned by the Wi-Fi Alliance. Any use of these marks on this website does not imply any affiliation with or endorsement.