

# System Loco LocoTrack HFR4 GPS Tracker User Guide



**System Loco.**

## Contents

- [1 Quick Start Guide](#)
- [2 LocoTrack HFR4.](#)
  - [2.1 Introduction.](#)
    - [2.1.1 How the System Works](#)
    - [2.1.2 Installation and Asset Association](#)
  - [2.2 Device Characteristics.](#)
  - [2.3 LocoTrack HGR4 Operation.](#)
    - [2.3.1 Turn on the HGR4](#)
    - [2.3.2 Recharging the LocoTrack HFR4](#)
  - [2.4 Getting Started – at HQ.](#)
  - [2.5 Getting Started – in the Field.](#)
    - [2.5.1 Confirm on LocoAware that the device has reported to the server](#)
    - [2.5.2 Test the device with a LocoTag](#)
    - [2.5.3 Monitor the device](#)
  - [2.6 Certifications.](#)
    - [2.6.1 Countries](#)
  - [2.7 Safety Statements.](#)
    - [2.7.1 Human Exposure Compliance Statement](#)
    - [2.7.2 FCC Rules and Industry Canada \(IC\) regulatory information](#)
    - [2.7.3 RF Radiation Exposure Statement](#)
- [3 Documents / Resources](#)
  - [3.1 References](#)
- [4 Related Posts](#)

## Quick Start Guide

## LocoTrack HFR4.



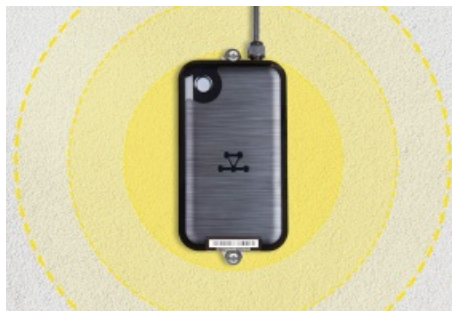
Document Version: 1.0.4

06/28/2023

## Introduction.

### How the System Works

The LocoTrack Rechargeable HFR4 is a fixed unit, utilizing external power. It supports multiple asset tracking and can track all compatible LocoTrack<sup>1</sup> and LocoTag devices, with up to 1000 devices connected and feeding through it at a time.



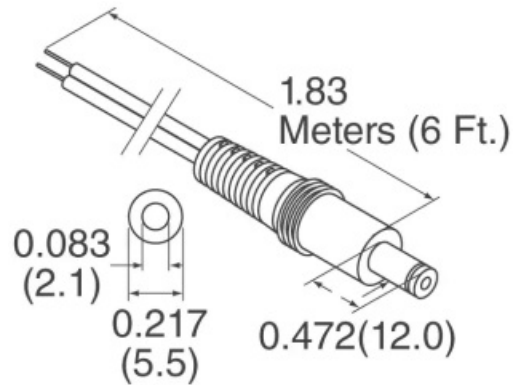
The device is normally fixed to a wall or column, near a power outlet so it can be continuously charged. The device can be charged and used independently, for example it can be attached to trolleys and charged regularly instead. This use case is outside the scope of the QuickStart guide, contact your sales representative if you would like to plan or discuss alternative use cases for this and other devices in the System Loco family.

The LocoTrack HFR4 comes pre-configured, has its own internet connection (no WIFI setup is required) and is ready to go. It is automatically associated with your account on the LocoAware platform, and it will automatically begin to report all LocoTag data to the LocoAware platform.

<sup>1</sup>LocoTrack devices require a configuration change to behave as Tags. This is achieved through the LocoAware platform.

The LocoTrack HFR4 is provided pre-configured with default settings that allow it to act as a gateway for your LocoTag devices.

The LocoTrack HFR4 device requires a 5V mains / wall power supply unit to recharge / power the device. This is not supplied as part of the product.



⚠ 5V power supply unit should be sourced from a reputable supplier with a standard 2.1mm Barrel Jack (2.1×5.5)

Depending on your use case, you should plan where your LocoTrack HFR4 device is placed. The device should be fixed on a flat surface or a wall in a place where LocoTags should be tracked. For example, a warehouse storeroom wall, close to a mains/wall power supply where assets, pallets, or totes with LocoTags are expected to arrive.

When planning installation, consider the installation environment. The device will operate in conditions between -10 to 50°C (14°F to 122°F) and will charge its internal battery between 0 to 45°C (32°F to 113°F).

Once any System LocoTag enabled device comes into range of the LocoTrack HFR4 unit, it will connect to it securely and begin to report any data it has been configured to collect to your LocoAware platform automatically.

LocoTags have a range of 20m (65.6ft) indoors and 80m (262.5ft) outdoors.



⚠ Note: A cable length of up to 3m can be used. For safety, cables should be tied / fixed to surfaces and walls.

#### Device Characteristics.



1. Power Button / LED / Light Sensor
2. Power Cable
3. Mounting Brackets
4. Device ID / Barcode
5. Certifications / Info Label

### LocoTrack HGR4 Operation.

#### Turn on the HGR4



ⓘ The button and LED light are on the face of the device in the top-left corner

Press the button to turn the device on. A green light indicates the device is on and working properly.

Depending on how your administrator has configured the device's button behaviour; typically:

- a) A button press will cause the light to flash green to indicate that it is on
- b) If your administrator has disabled the button, no lights will flash

---

If the administrator has configured the button as an on-off toggle button:

- a) Green indicates the device has been turned on
- b) Red indicates the device has been turned off

The LocoTrack HFR4 will begin to gather and communicate data. It will be pre-configured but it's reporting behaviour can be adjusted using the Profiles feature on the LocoAware platform<sup>2</sup>.

! For more on configuring devices on the LocoAware website platform please visit:  
<https://systemloco.zendesk.com/hc/en-us/sections/360004960979-LoCoAware>

#### Recharging the LocoTrack HFR4

The LocoTrack HFR4 can operate on battery life for up to 40 days at 15-minute reporting intervals.

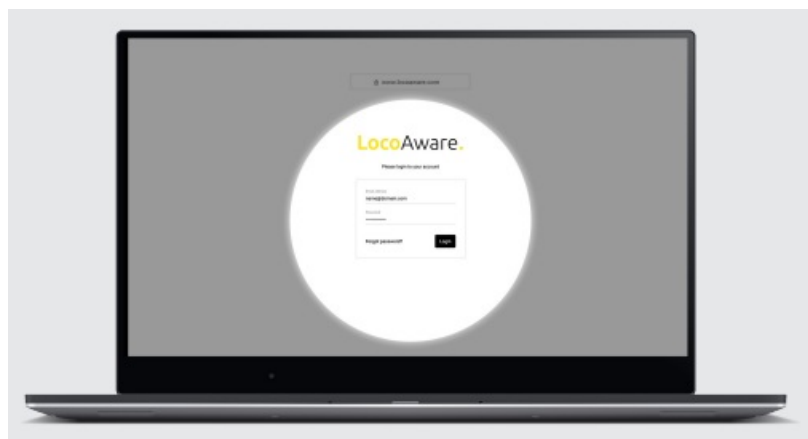
The device is rechargeable, it can be easily recharged using a 5v barrel jack power supply unit.



For more information on configuring devices on the LocoAware platform<sup>2</sup>

#### Getting Started – at HQ.

##### Step 1



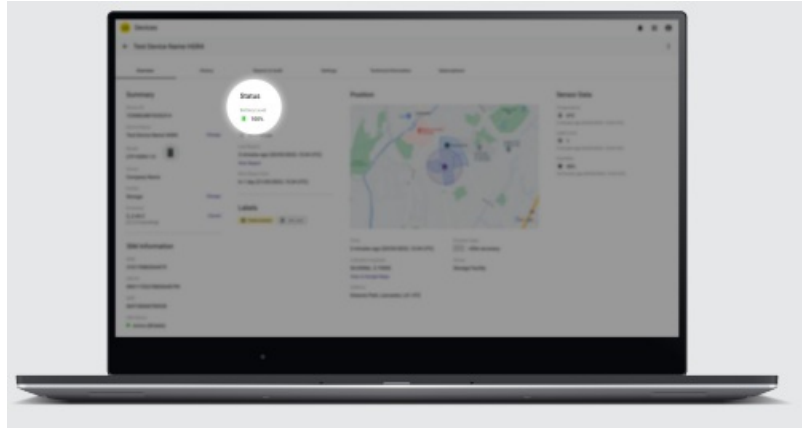
Access LocoAware ([www.locoaware.com](http://www.locoaware.com)) and login with the credentials provided to your company's administrator.

##### Step 2

Once you have logged in, please create suitable profiles for how you intend to use your devices.

! For help with creating device profiles, please see our Knowledge Base article here:  
<https://systemloco.zendesk.com/hc/en-us/articles/360017778920-Profiles>

### Step 3



Before you send your device out into the field, you should understand how your device will be used. If it will NOT be fixed to a wall and powered continuously, ensure that the device has sufficient charge. You can monitor the level of charge on the LocoAware platform.

! We recommend to recharge the device in-between every use to prolong the battery life

### Getting Started – in the Field.

#### Step 1

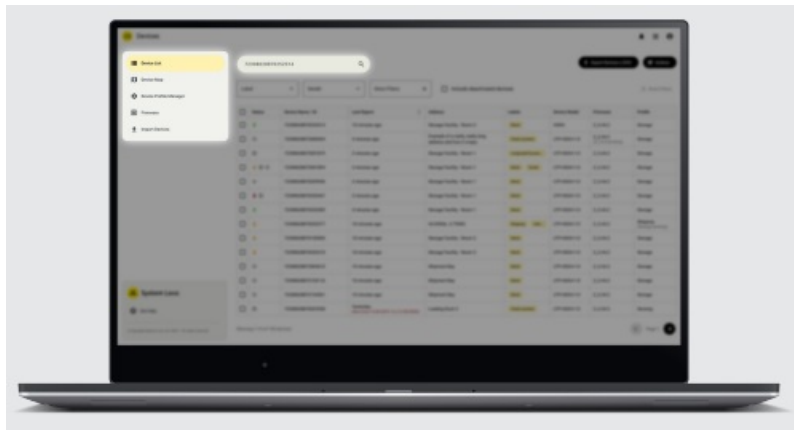


Press the power button to turn on the device. The green light means it has turned on.

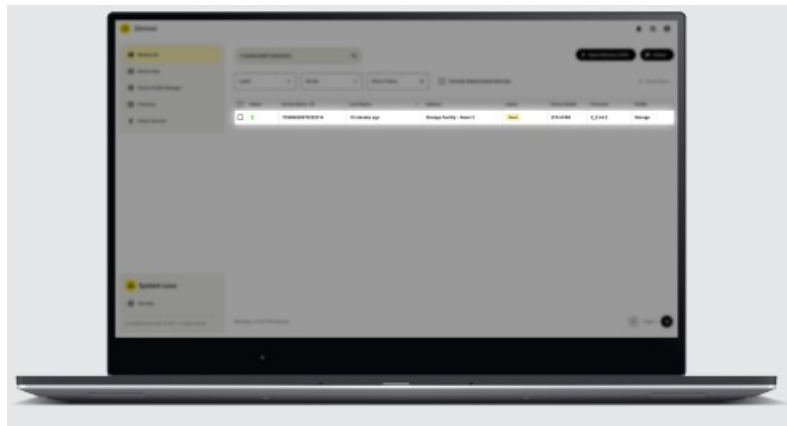
! If your administrator has disabled the button, no lights will flash

#### Step 2

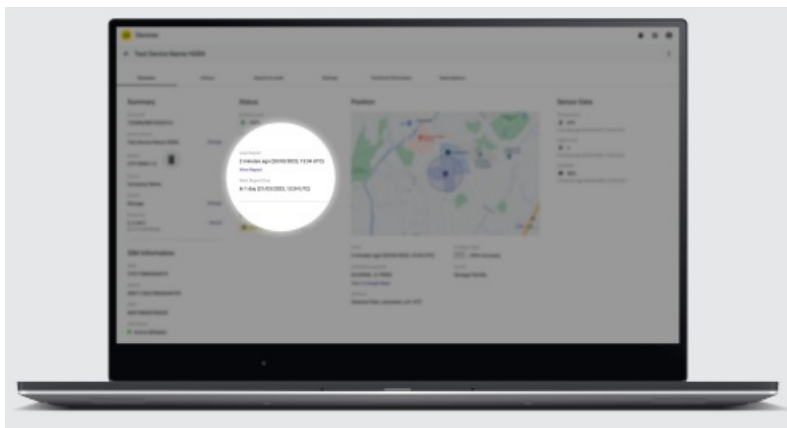
Confirm on LocoAware that the device has reported to the server



Find your device on [www.locoaware.com](http://www.locoaware.com) by entering the Device ID / Barcode number into the search field.



Select the device from the list of search results.



Confirm that the last report time is current with the device's details page.

### Step 3

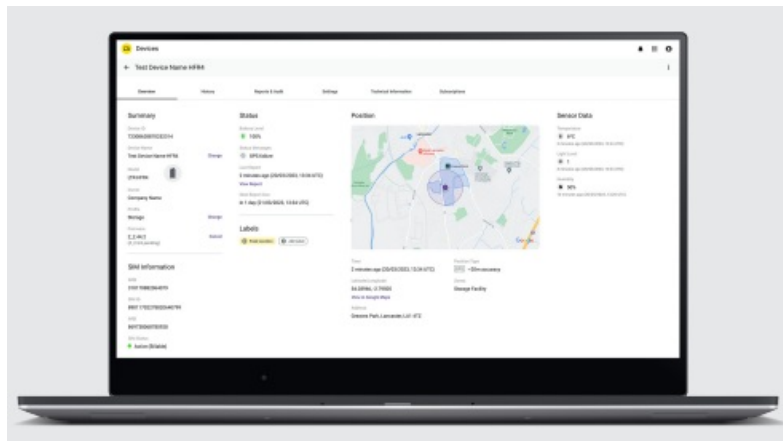
Test the device with a LocoTag



Any activated LocoTag or LocoTrack configured as a Tag will begin reporting through the switched on LocoTrack HFR4 as soon as they come into range, 20m (65.6ft) indoors and 80m (262.5ft) outdoors.

## Step 4

### Monitor the device



Monitor the LocoTrack HFR4 through the LocoAware platform. In addition, monitor any LocoTag devices on the LocoAware platform by searching for them (see Getting Started - in the field).

Alternatively, you may use your own platform if API integration has been completed.



For information on API integration please visit: <https://locoaware.com/apidocs/index>

### Certifications.

#### Countries

This product has been certified to the following standards:

FCC, IC, MIC, NOM, ANATEL, UKCA, CE, ROHS, SUBTEL, NCC, NBTC, KC, WPC, RCM, RAMATEL

### Safety Statements.

#### Human Exposure Compliance Statement



Pursuant to 47 CFR § 24.52 of the FCC Rules and Regulations, personal communications services (PCS) equipment is subject to the radio frequency radiation exposure requirements specified in § 1.1307(b), § 2.1091 and § 2.1093, as appropriate.

System Loco certifies that it has determined that the LocoTrack Rechargeable complies with the RF hazard requirements applicable to the broadband PCS equipment operating under the authority of 47 CFR Part 24, Subpart E of the FCC Rules and Regulations. This determination is dependent upon installation, operation and use of the equipment in accordance with all instructions provided.

The LocoTrack Rechargeable is designed for and intended to be used in fixed and mobile applications.

“Fixed” means that the device is physically secured at one location and is not able to be easily moved to another location. “Mobile” means that the device is designed to be used in other than fixed locations and generally in such a way that a separation distance of at least 20 cm is normally maintained between the transmitter’s antenna and the body of the user or nearby persons. The LocoTrack Rechargeable is not designed for or intended for use in applications within 20 cm of the body of the user and such uses are strictly prohibited.

To ensure that the LocoTrack Rechargeable complies with current FCC regulations limiting both maximum RF output power and human exposure to radio frequency radiation, a separation distance of at least 20 cm must be maintained between the unit’s antenna and the body of the user and any nearby persons at all times and in all applications and uses.

#### **FCC Rules and Industry Canada (IC) regulatory information**

##### **Compliance Statement (Part 15.19)**

The equipment device complies with Part 15 of the FCC Rules. Operation is subject to the following two conditions: (1) This device may not cause harmful interference, and (2) This device must accept any interference received including interference that may cause undesired operation.

##### **Warning (Part 15.21)**

Changes or modifications not expressly approved could void the user’s authority to operate the equipment. Manufacturer is not responsible for any radio or TV interference caused by unauthorized modifications to this equipment.

##### **Compliance Statement (Part 15.105(b))**

Note: This equipment has been tested and found to comply with the limits for a Class B digital device, pursuant to part 15 of the FCC Rules. These limits are designed to provide reasonable protection against harmful interference in a residential installation. This equipment generates, uses and can radiate radio frequency energy and, if not installed and used in accordance with the instructions, may cause harmful interference to radio communications. However, there is no guarantee that interference will not occur in a particular installation. If this equipment does cause harmful interference to radio or television reception, which can be determined by turning the equipment off and on, the user is encouraged to try to correct the interference by one or more of the following measures:

- Reorient or relocate the receiving antenna
- Increase the separation between the equipment and receiver
- Consult the dealer or an experienced radio/TB technician for help.

This device complies with Industry Canada license-exempt RSS standard(s). Operation is subject to the following conditions: (1) this device may not cause interference, and (2) this device must accept any interference, including interference that may cause undesired operation of the device.

Class B digital device notice  
“CAN ICES-3 (B)/NMB-3(B)”

**RF Radiation Exposure Statement**

This equipment complies with FCC radiation exposure limits set fourth for mobile transmitting devices operation in an uncontrolled environment. End users must follow the specific operating instructions to satisfy RF exposure compliance. The equipment should only be used where there is normally at least 20cm separation between the antenna and all person/user.

This transmitter must not be co-located or operation in conjunction with any other antenna or transmitter.

Any changes or modification not expressly approved by the party responsible for compliance could void the user’s authority to operate this equipment.

**Mexico**

IFETEL RTICASC17-1153

**Taiwan**




[www.systemloco.com](http://www.systemloco.com)

Document Version: 1.0.4

06/28/2023

**Documents / Resources**

	<p><b><a href="#">System Loco LocoTrack HFR4 GPS Tracker</a></b> [pdf] User Guide LTR HFR4, LocoTrack HFR4 GPS Tracker, LocoTrack HFR4, GPS Tracker, Tracker</p>
---	--

**References**

- [👤 LocoAware - Device Management](#)
- [👤 LocoAPI Documentation](#)
- [User Manual](#)

## **Manuals+. Privacy Policy**

This website is an independent publication and is neither affiliated with nor endorsed by any of the trademark owners. The "Bluetooth®" word mark and logos are registered trademarks owned by Bluetooth SIG, Inc. The "Wi-Fi®" word mark and logos are registered trademarks owned by the Wi-Fi Alliance. Any use of these marks on this website does not imply any affiliation with or endorsement.