



System Loco HGP4 Track Integrated with Wialon User Guide

[Home](#) » [System Loco](#) » System Loco HGP4 Track Integrated with Wialon User Guide 



Loco HGP4 Track Integrated with Wialon
User Guide



Quick Start Guide
Loco Track HGP4.
Document Version: 1.0.3

Contents

- 1 Introduction.
- 2 Device Characteristics.
- 3 Getting Started – at HQ.
- 4 Getting Started – in the Field.
- 5 Certifications.
- 6 Safety Statements.
- 7 Documents / Resources
 - 7.1 References

Introduction.

The Loco Track HGP4 is a long life, non-rechargeable rugged device designed to track large assets over extended periods of time. The Loco Track HGP4 is perfect for tracking machinery and equipment. With a low reporting rate, it can provide long-term data and raise alerts when unexpected movement or changes in environments occur. The device has optional screw holes and mounting points for optional magnets (not supplied), it can be mounted to a multitude of assets. How the System Works

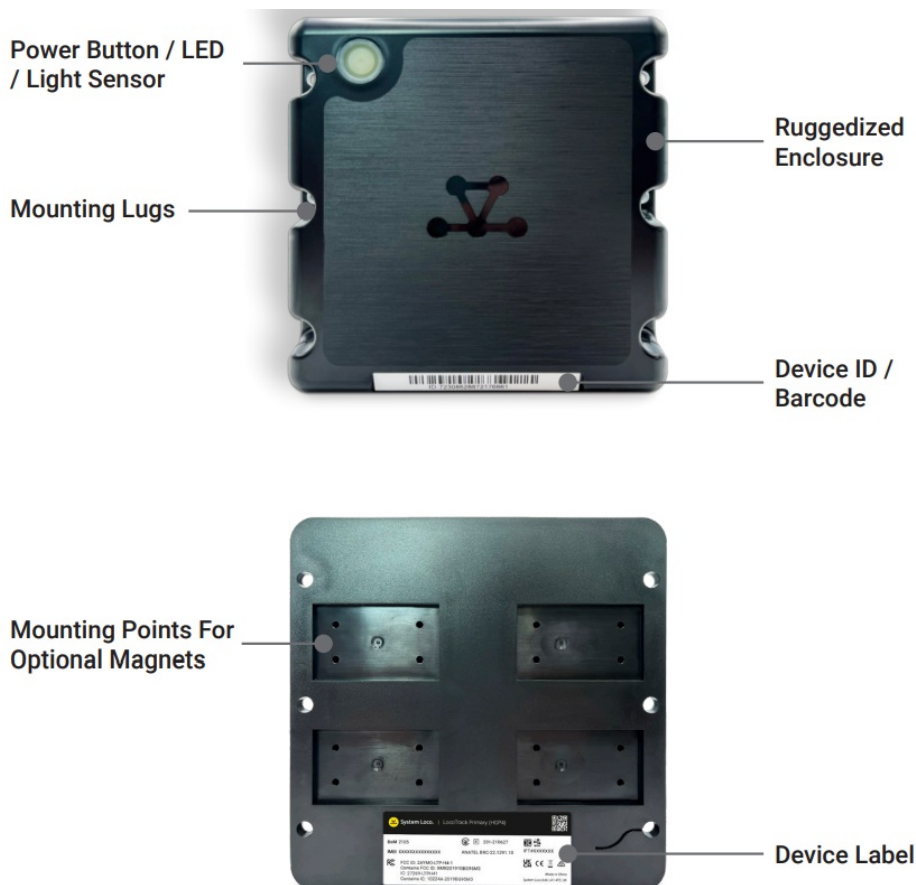
Installation and Asset Association

The LocoTrack HGP4 is pre-configured with default settings. All that is needed is to turn on the device and associate the device with the asset to which it is attached.

Each LocoTrack HGP4 has a unique identifier that is presented as a number and a barcode on its label.

Association is completed by scanning this barcode and entering a name for the asset on the LocoAware platform. Once associated, the Loco Aware platform allows a user to search for a specific asset by asset name or by device ID.

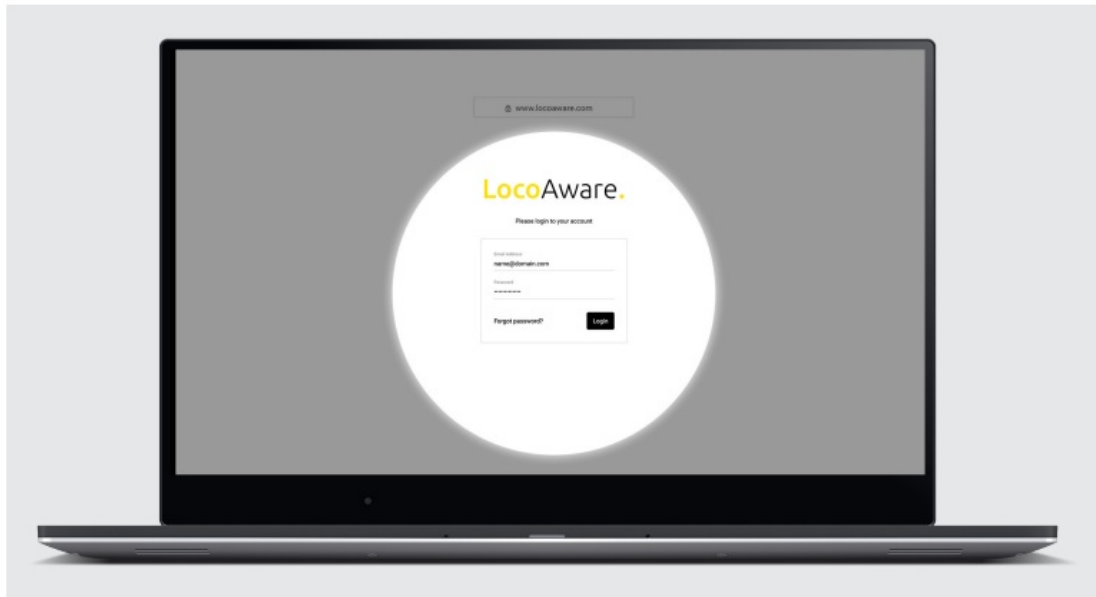
Device Characteristics.



Getting Started – at HQ.

Step 1

Access the LocoAware platform



Access LocoAware (www.locoaware.com) and login with the credentials provided to your company's administrator.

Step 2

Create device profiles

Create suitable profiles for how you intend to use your devices.



For help with creating device profiles, please see our Knowledge Base article here:

<https://systemloco.zendesk.com/hc/en-us/articles/360017778920-Profiles>

Getting Started – in the Field.

Step 1

Turn on the LocoTrack HGP4



Note: The all-in-one Power Button/LED/Light Sensor are on the face of the device, (see image).

Press the Power Button to turn the device on. The LocoTrack HGP4 will gather and communicate data according to the profile that has been assigned to it.

Depending on how your administrator has configured the device's button behaviour; typically:

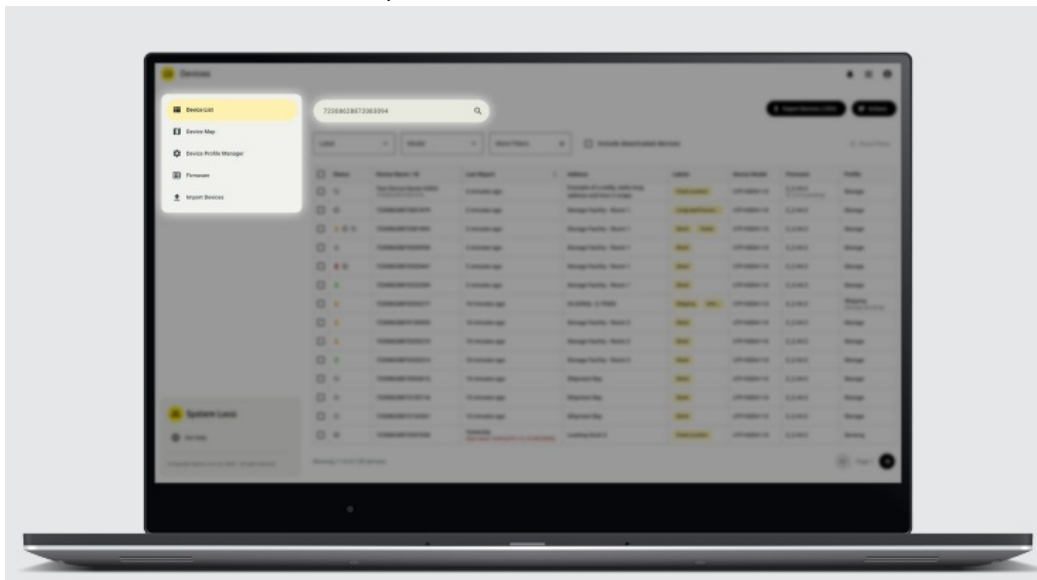
- a) A button press will cause the light to flash green to indicate that it is on
- b) If your administrator has disabled the button, no lights will flash

If the administrator has configured the button as an on-off toggle button:

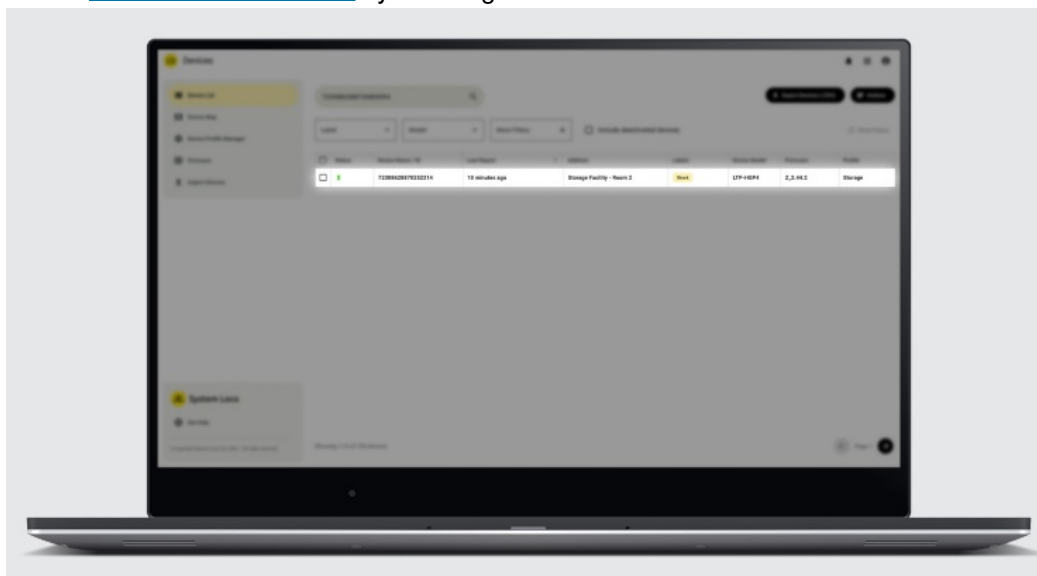
- a) Green indicates the device has been turned on
- b) Red indicates the device has been turned off

Step 2

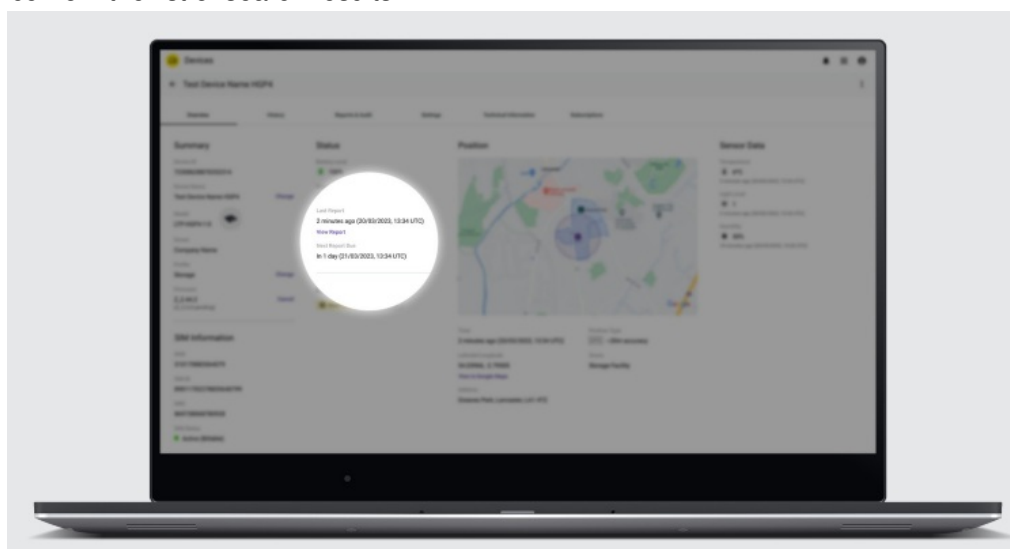
Confirm on LocoAware that the device has reported to the server



Find your device on www.locoaware.com by entering the Device ID / Barcode number into the search field.



Select the device from the list of search results.



Confirm that the last report time is current with the device's details page.

Step 3

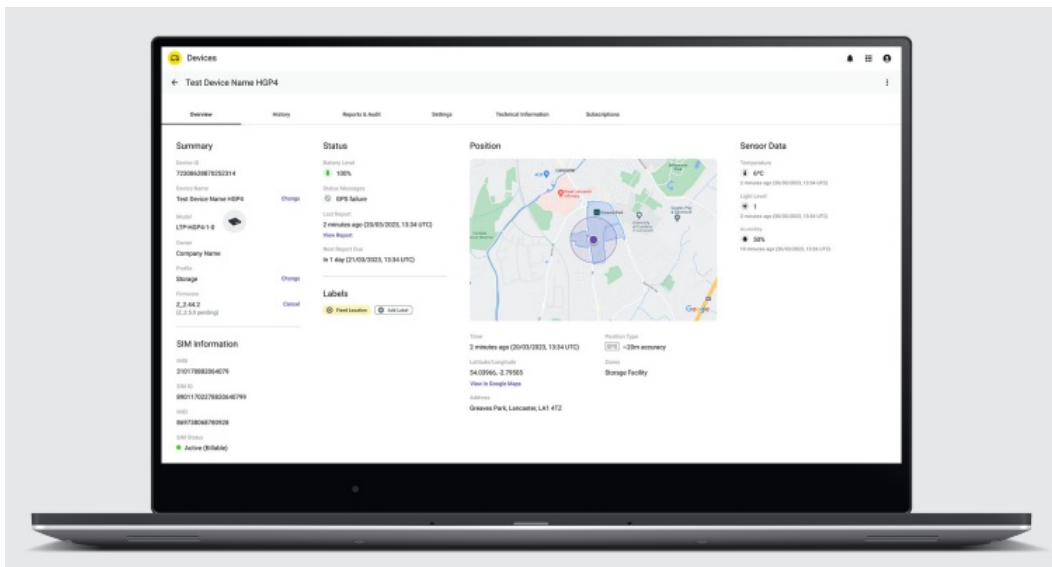
Attach the device to an asset



The LocoTrack HGP4 should be attached to the single asset that it was associated to during setup / asset association.

Step 4

Monitor the device



Monitor the device from within the LocoAware platform or via the API if integration has been completed.



For information on API integration please visit: <https://locoaware.com/apidocs/index>

Certifications.

Countries

This product has been certified to the following standards:
FCC, IC, MIC, NOM, ANATEL, UKCA, CE, ROHS, RCM, RAMATEL
Airlines
5C

Disposing of the LocoTrack HGP4.

The HGP4 is a single use device. After use, it can be disposed of according to your local environmental regulations for electronics products containing alkaline batteries. Please check with local authorities to ensure correct disposal.

Further Guidance.

For more help and information with the LocoTrack HGP4 or the LocoAware platform, please see our online Knowledge Base.

<https://systemloco.zendesk.com/hc/en-us>

Safety Statements.

FCC Rules and Industry Canada (IC) regulatory information

Compliance Statement (Part 15.19)

The equipment device complies with Part 15 of the FCC Rules. Operation is subject to the following two conditions: (1) This device may not cause harmful interference, and (2) This device must accept any interference received including interference that may cause undesired operation.

Warning (Part 15.21)

Changes or modifications not expressly approved could void the user's authority to operate the equipment. Manufacturer is not responsible for any radio or TV interference caused by unauthorized modifications to this equipment.

Compliance Statement (Part 15.105(b))

Note: This equipment has been tested and found to comply with the limits for a Class B digital device, pursuant to part 15 of the FCC Rules. These limits are designed to provide reasonable protection against harmful interference in a residential installation.

This equipment generates, uses and can radiate radio frequency energy and, if not installed and used in accordance with the instructions, may cause harmful interference to radio communications. However, there is no guarantee that interference will not occur in a particular installation. If this equipment does cause harmful interference to radio or television reception, which can be determined by turning the equipment off and on, the user is encouraged to try to correct the interference by one or more of the following measures:

Reorient or relocate the receiving antenna

Increase the separation between the equipment and receiver

Consult the dealer or an experienced radio/TB technician for help.

This device complies with Industry Canada license-exempt RSS standard(s). Operation is subject to the following conditions: (1) this device may not cause interference, and (2) this device must accept any interference, including interference that may cause undesired operation of the device.

Class B digital device notice

"CAN ICES-3 (B)/NMB-3(B)"

RF Radiation Exposure Statement

This equipment complies with FCC radiation exposure limits set fourth for mobile transmitting devices operation in an uncontrolled environment. End users must follow the specific operating instructions to satisfy RF exposure compliance. The equipment should only be used where there is normally at least 20cm separation between the antenna and all persons/users.

This transmitter must not be co-located or operation in conjunction with any other antenna or transmitter.

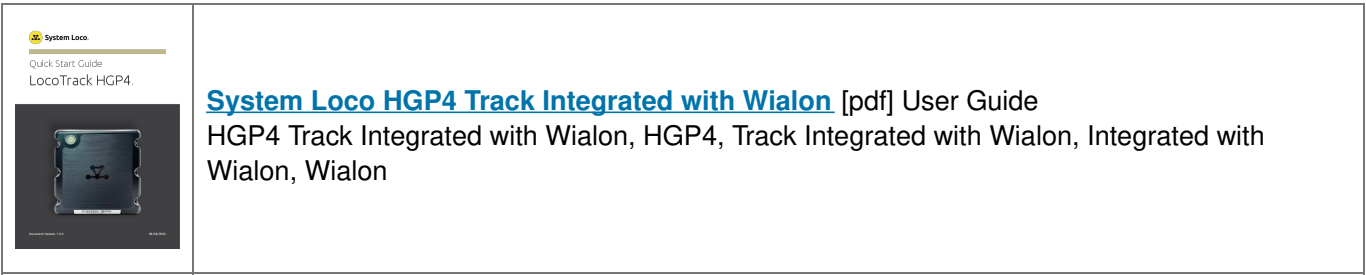
Any changes or modification not expressly approved by the party responsible for compliance could void the user's authority to operate this equipment.



Document Version: 1.0.3

www.systemloco.com

06/28/2023



References

- [!\[\]\(36f8637baaa56c4be44b454435949289_img.jpg\) LocoAware - Device Management](#)
- [!\[\]\(b556e0ef1e10ccfc32976edb6416074f_img.jpg\) LocoAPI Documentation](#)
- [!\[\]\(cf1529ba638f0498d7e334e7a79dd058_img.jpg\) System Loco](#)
- [!\[\]\(2c071b2b285393c82ac6838d54fa5656_img.jpg\) System Loco](#)
- [User Manual](#)

[Manuals+](#), [Privacy Policy](#)

This website is an independent publication and is neither affiliated with nor endorsed by any of the trademark owners. The "Bluetooth®" word mark and logos are registered trademarks owned by Bluetooth SIG, Inc. The "Wi-Fi®" word mark and logos are registered trademarks owned by the Wi-Fi Alliance. Any use of these marks on this website does not imply any affiliation with or endorsement.