

System Loco HGD4 Loco Tag Primary LocoTrack



System Loco HGD4 Loco Tag Primary LocoTrack User Guide

[Home](#) » [System Loco](#) » System Loco HGD4 Loco Tag Primary LocoTrack User Guide 

Contents

- [1 System Loco HGD4 Loco Tag Primary LocoTrack](#)
- [2 Product Usage Instructions](#)
- [3 Introduction](#)
- [4 Device Characteristics](#)
- [5 Getting Started – at HQ](#)
- [6 Getting Started – in the Field.](#)
- [7 FAQ](#)
- [8 Documents / Resources](#)
 - [8.1 References](#)



System Loco HGD4 Loco Tag Primary LocoTrack



Specifications

- **Product Name:** LocoTag T1B
- **Document Version:** 0.0.2
- **Date:** 04/18/2024
- **Device Characteristics:**
 - Transport Security Seal Point
 - Device ID / Barcode
 - Additional Transport Security Seal Point
 - Entry points for Optical cable

Product Usage Instructions

Getting Started – at HQ

The T1B will monitor the integrity of the security seal and report its status via a BLE broadcast.

1. **Step 1:** Access the LocoAware platform
 - Access LocoAware (www.locoaware.com) and log in with the provided credentials.
2. **Step 2:** Navigate to the hub/reader
 - Go to the hub/reader device you wish to pair the T1B with and navigate to the settings tab.
3. **Step 3:** Pair the T1B to Hub/Reader
 - In the Dialogue box, enter the device id of the T1B device that will be paired with the unit. Click Save once done.
4. **Step 4:** Confirm the T1B has paired
 - Check the hub/reader report or view the T1B device page to confirm pairing.

Getting Started – in the Field

1. **Step 1:** Activation
 - Remove the battery tab to power on the unit. Dispose of the battery tab afterwards. The T1B will transmit data every 10 seconds once activated.
2. **Step 2:** Remove Dust Caps
 - Detach the 2 dust caps to reveal the optical link sockets. Insert the optical cable to activate the device.

Introduction

How the System Works

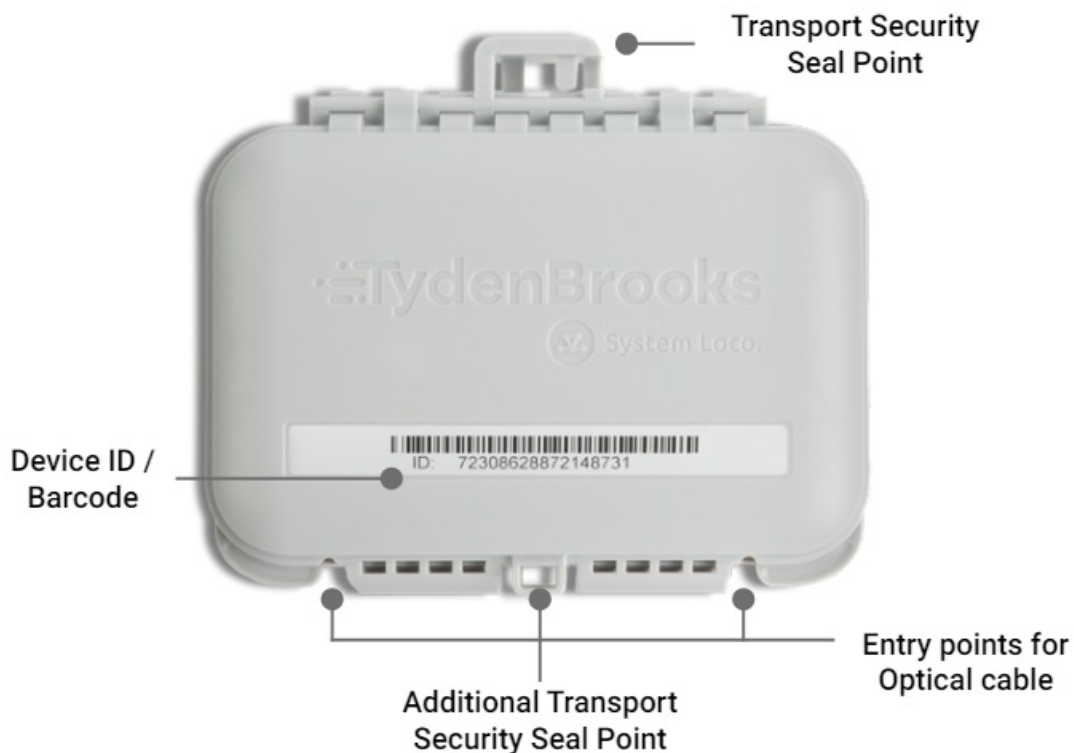
The LocoTag T1B Cable Sensor reports through System Loco Hubs such as the HGD4 or HGR4; the devices are paired during device deployment. When activated, the cable sensor tag will report the status of the cable (attached, detached or cut). With the combination of the System Loco HGD4 or HGR4 communication hubs, the full location and status of a shipment can be monitored. Actionable alert notifications can be triggered to almost instantly signal to personnel that a container seal has been opened or compromised.

The LocoAware platform enable users to view logged data, location and temperature where the LocoTag T1B Cable Sensor has been observed by System Loco Hubs. The same data is available to third party monitoring applications and services via a JSON API.

To use the T1B security seal you will need the following equipment:

- A System Loco hub/reader device running a firmware greater than 3.0.1: LTR-HGR4, LTR-HFR4, LTP-HGD4, LTP-HGC4 or LTP-HGP4
- A T1B security seal
- Optical cable (Not Supplied)

Device Characteristics

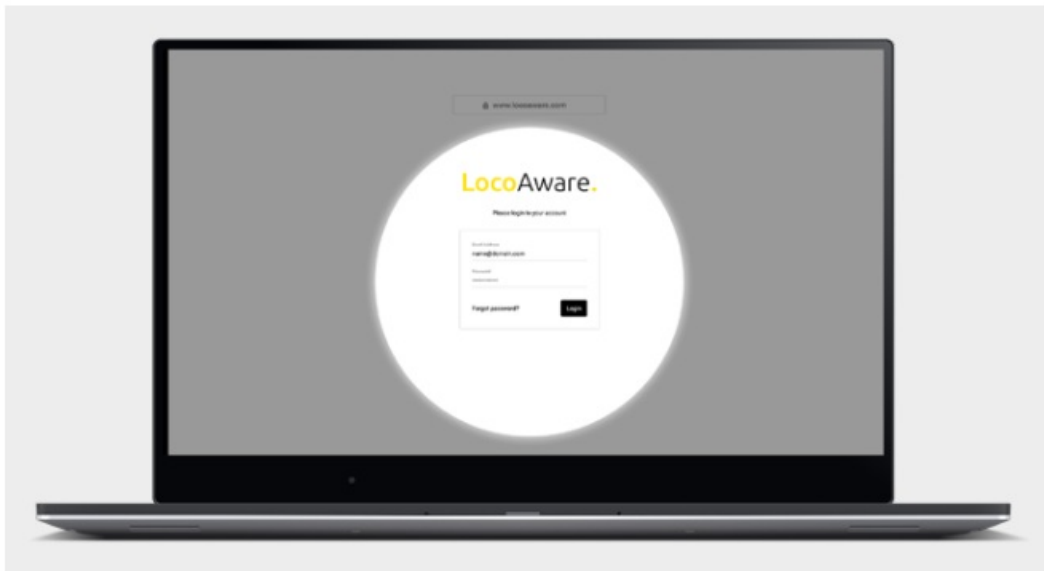


Getting Started – at HQ

The T1B will monitor the integrity of the security seal and will report its status via a BLE broadcast. The T1B status is reported back to the System Loco server via a reader/hub. To enable this functionality the T1B must be paired with a corresponding hub/reader.

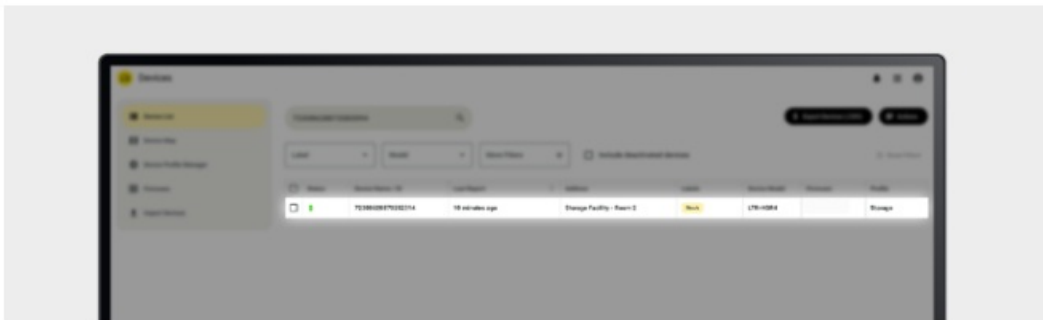
The hub/reader must be running a firmware greater than 3.0.1 to enable the pairing functionality.

1. Access the LocoAware platform



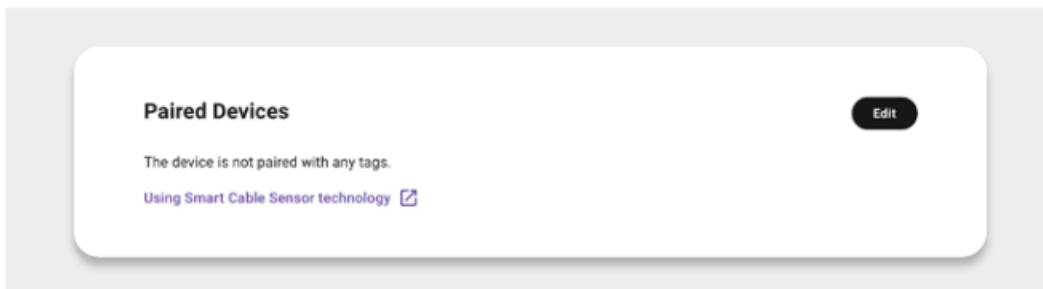
Access LocoAware (www.locoaware.com) and login with the credentials provided to your company's administrator.

2. Navigate to the hub/reader

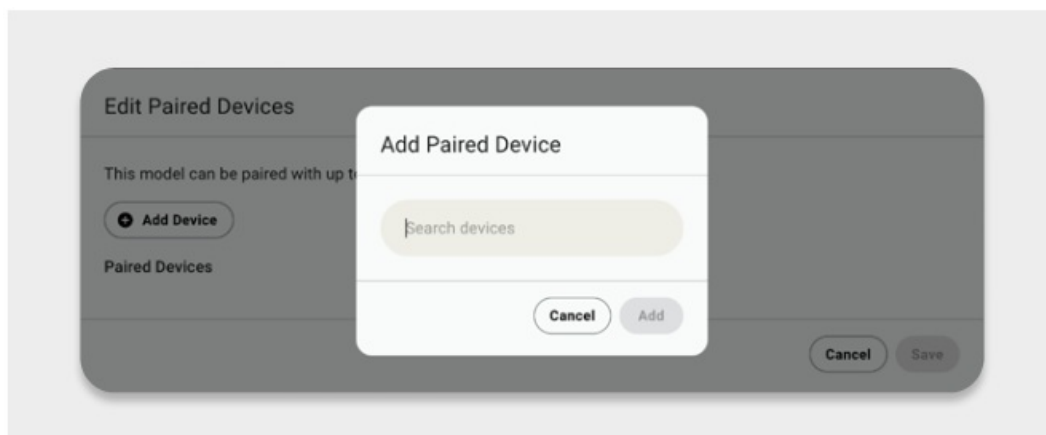


Go to the hub/reader device you wish to pair the T1B with and navigate to the settings tab.

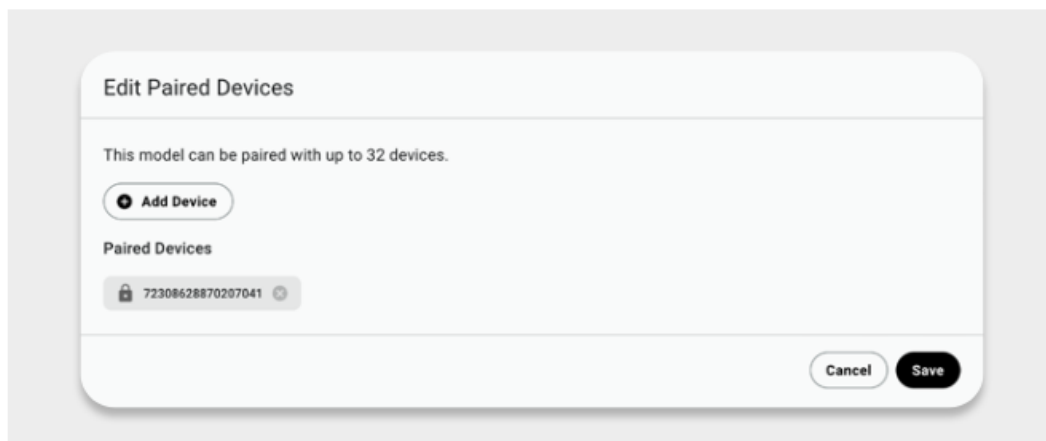
3. Pair the T1B to Hub/Reader



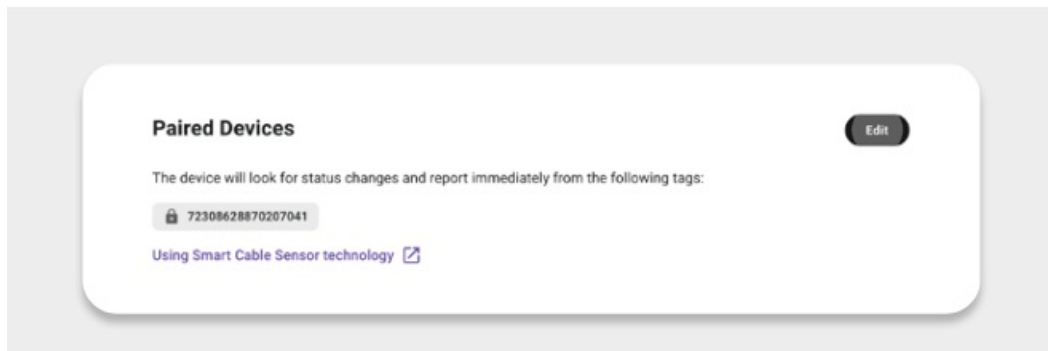
- Scroll down to the Paired Devices card and select “Edit”.
- In the Dialogue box, enter the device id of the T1B device that will be paired with the unit. This can be found on the front of the T1B.



- Once the device id(s) have been added, click on Save.



- Your device will now show the updated list of paired devices.



Note, that standard tag reporting requires the “Tag Detection” button to be enabled in the Controls tab of the hub/reader settings. This is not required for the T1B. The Device Pairing functionality ensures the correct settings/timings are used to maximise battery life and device responsiveness. “Tag Detection” can be used, but this will only apply to proximity and logging tags, the “Tag Detection” settings will not change or affect the T1B operation.

4. Confirm the T1B has paired

The device will not light up an LED, or indicate that it is powered On. Instead, you can confirm the T1B has paired with the hub/reader by checking the hub/reader report. You can also view the T1B device page to confirm the status of the unit.

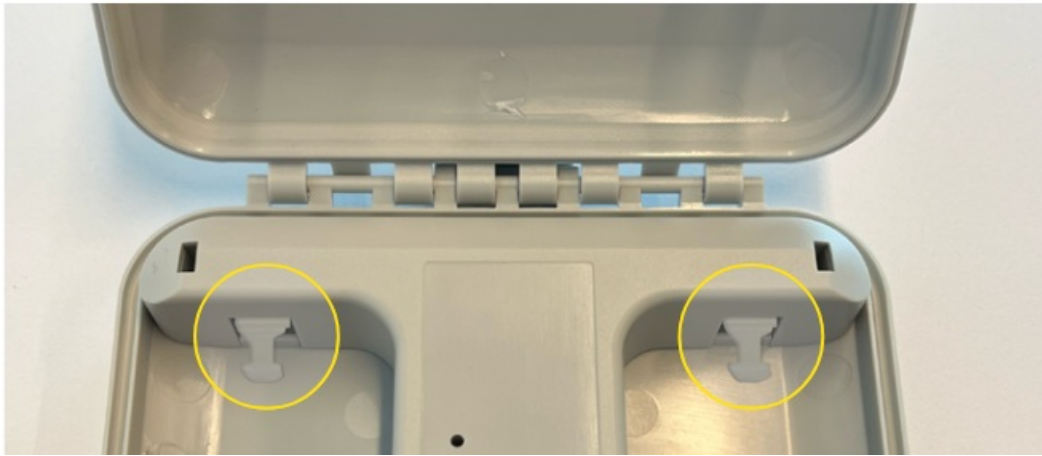
Getting Started – in the Field.

1. Activation

Remove the battery tab to power on the unit. You may dispose of the battery tab afterwards. Once activated, the T1B will transmit data every 10 seconds.

2. Remove Dust Caps

Detach the 2 dust caps to reveal the optical link sockets. These ports are where the optical cable is inserted to activate the device.



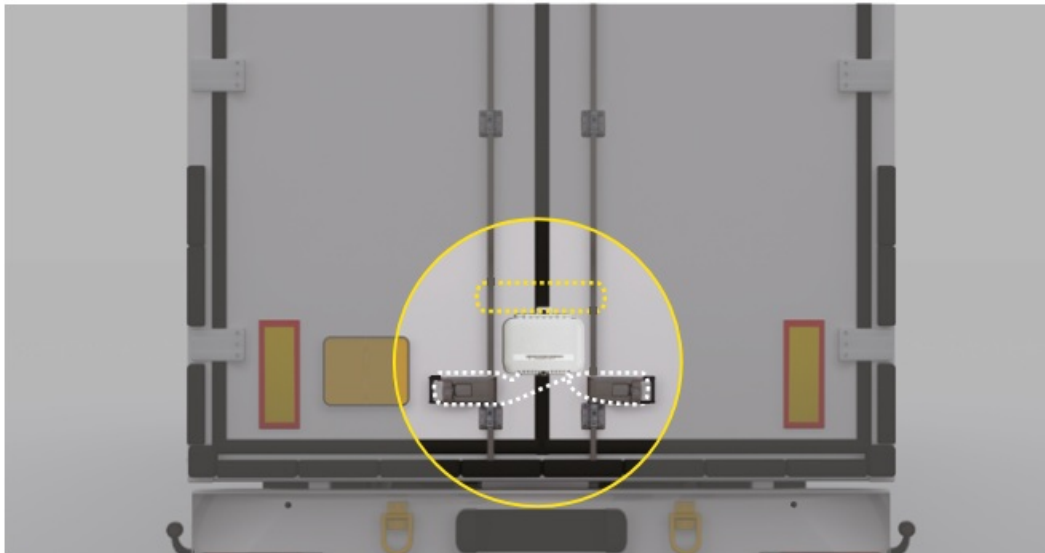
3. Activating the Security Seal Function

- Activating the security seal involves connecting the optical cable to the two sockets inside the case. When the optical cable is disconnected, the switch status displays as 'Open.' Upon connection of the optical cable, the Red LED will flash 10 times, signaling its activation and initiation of monitoring the optical cable for seal integrity
- Once the cable is connected, the T1B status transitions to 'Closed,' prompting an immediate report from the hub/reader to denote the status change.
- The T1B continuously monitors the optical cable status every 250ms and transmits its status every 1 second. In the event of cable disconnection or cutting, the device status reverts to 'Open,' triggering an immediate report to indicate the change in status to 'Open.'



4. Securing the T1B to your container / Lorry Trailer

- Thread the security seal (highlighted in yellow in the diagram) through the top insert of the device, firmly securing the T1B to the vertical bars.
- Next, pass the optical cable through the handles and along the vertical bars, concluding by connecting it through the optical insert on the T1B (indicated in white on the diagram).



Batteries.

The unit uses a 3V 500mAh primary battery (non-rechargeable)

- Do not expose to temperatures $>85^{\circ}\text{C}$ (185°F)
- Do not incinerate or disassemble
- Recycle after use

Certifications.

Countries

This product is expected certificated to the following standards: FCC, IC, CE, NOM, IFETEL

Environmental Considerations.

The equipment may contain substances that are harmful to the environment or human health. Please recycle this unit appropriately. Please contact your local authority for disposal or recycling information.

www.systemloco.com

FAQ


Q: How often does the T1B transmit data once activated?

A: The T1B transmits data every 10 seconds once activated.

Q: How can I confirm if the T1B has paired with the hub/reader?

A: Check the hub/reader report or view the T1B device page to confirm the pairing status.

Documents / Resources

	<p>System Loco HGD4 Loco Tag Primary LocoTrack [pdf] User Guide HGD4 Loco Tag Primary LocoTrack, HGD4, Loco Tag Primary LocoTrack, Tag Primary LocoTrack, Primary LocoTrack, LocoTrack</p>
---	--

References

-  [LocoAware - Device Management](#)
- [User Manual](#)

[Manuals+](#), [Privacy Policy](#)

This website is an independent publication and is neither affiliated with nor endorsed by any of the trademark owners. The "Bluetooth®" word mark and logos are registered trademarks owned by Bluetooth SIG, Inc. The "Wi-Fi®" word mark and logos are registered trademarks owned by the Wi-Fi Alliance. Any use of these marks on this website does not imply any affiliation with or endorsement.