



Synology DS3622xs+ DiskStation Owner's Manual

[Home](#) » [Synology](#) » Synology DS3622xs+ DiskStation Owner's Manual 

Contents

- [1 Synology DS3622xs+ DiskStation](#)
- [2 Product Information](#)
- [3 Product Usage Instructions](#)
- [4 INSTRUCTIONS](#)
- [5 Before you start](#)
- [6 Access and manage folders](#)
- [7 Further reading](#)
- [8 Documents / Resources](#)
 - [8.1 References](#)
- [9 Related Posts](#)



Synology DS3622xs+ DiskStation



Product Information

Hybrid Share

Specifications:

- Solution Type: Hybrid-cloud
- Performance: Synology NAS
- Scalability: C2 Storage
- Access: Local and low-latency access to remote data
- Changes Sync: Automatically sync changes made to the Hybrid Share folder

Product Usage Instructions

Before You Start:

Before using Hybrid Share, make sure you meet the following requirements:

- You must have a Synology Account with a subscription to the C2 Storage – Advanced Plan.
- You need a compatible Synology NAS with the following specifications:
 - DSM 7.0.1 or above
 - External network access
 - Btrfs file system
 - 2 GB memory

Set up a Hybrid Share Folder:

The number of Hybrid Share folders you can mount depends on the storage capacity of your subscription plan, as well as your Synology NAS model and hardware specifications. There are two methods to set up and initialize a Hybrid Share folder:

Method 1: Mount a Hybrid Share Folder on your Synology NAS

To mount a Hybrid Share folder on your Synology NAS, follow these steps:

1. In DSM, go to Control Panel > Shared Folder.
2. Click Create > Mount Hybrid Share Folder.
3. Click Start and sign in with your Synology Account credentials.
4. Click Allow to grant your Synology NAS access to C2 Storage. Click Next.
5. Do one of the following:
 - If you have not already created a Hybrid Share folder on C2 Storage, you will be prompted to do so:
 1. Enter a folder name and set a folder quota.
 2. Click Create.
 3. Enter and confirm an encryption key. Click Next.
 4. Click Yes to confirm and download the encryption key.
 - If you have already created Hybrid Share folders on C2 Storage, select one that you want mount on this Synology NAS, enter its encryption key, and click OK.
6. Set up the Hybrid Share folder's local information and enable options as needed. Click Next when done.
7. Specify a reserved local cache size.
8. Click Next, and configure user permissions. Then, click Done.

FAQ:

Q: What is Hybrid Share?

A: Hybrid Share is a hybrid-cloud solution that combines the performance of Synology NAS with the scalability of C2 Storage. It allows you to mount your cloud storage on a Synology NAS for local and low-latency access to remote data stored on the cloud.

Q: Why use Hybrid Share?

A: There are several benefits of using Hybrid Share:

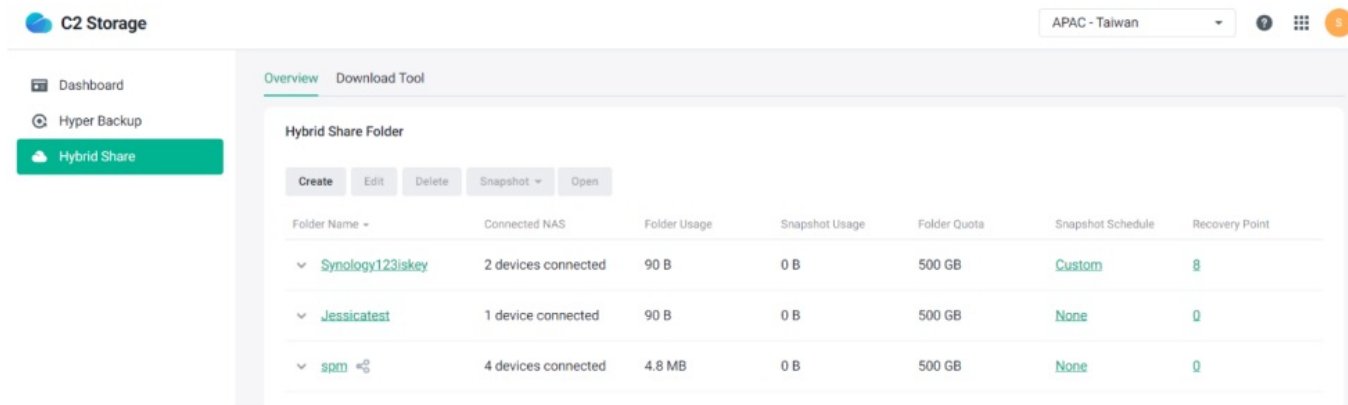
- Consolidate cross-site storage and synchronize data by mounting Hybrid Share folders on multiple Synology NAS devices.
- Seamlessly access Hybrid Share data with multiple file protocols, Synology Drive, File Station, or directly through C2 Storage Explorer.
- Optimize storage space and speed up local read access by pinning frequently accessed data to your Synology NAS.
- Safeguard precious data from ransomware or accidental deletion by configuring recovery points through the C2 Storage web portal.

Hybrid Share Quick Start Guide
Hybrid Share Quick Start
Last updated: Mar 28, 2023

INSTRUCTIONS

What is Hybrid Share?

Synology Hybrid Share is a hybrid-cloud solution combining the performance of Synology NAS with the scalability of C2 Storage. Mount your cloud storage on a Synology NAS for local and low-latency access to the remote data stored on the cloud.



Any changes made to the contents of the mounted Hybrid Share folder—including adding new files and folders, editing file contents, modifying file attributes, and deleting files or folders—will be automatically uploaded to the Hybrid Share folder on C2 Storage, and from there, synced to all Synology NAS devices mounted with the same Hybrid Share folder.

Check out the Hybrid Share YouTube video for more information on how Hybrid Share works.

Why use Hybrid Share?

- Consolidate cross-site storage and synchronize data by mounting Hybrid Share folders on multiple Synology NAS.
- Seamlessly access Hybrid Share data with multiple file protocols, Synology Drive, File Station, or directly through C2 Storage Explorer, acting like any other folder for end-users.
- Optimize storage space and speed up local read access by pinning frequently accessed data to your Synology NAS.
- Safeguard precious data from ransomware or accidental deletion by configuring recovery points through the C2 Storage web portal.

Before you start

- You must have a Synology Account with a subscription to the C2 Storage – Advanced Plan.
- You need a compatible Synology NAS with the following:
 - DSM 7.0.1 or above
 - External network access
 - Btrfs file system
 - 2 GB memory

Set up a Hybrid Share folder

The number of Hybrid Share folders you can mount depends on the storage capacity of your subscription plan, as well as your Synology NAS model and hardware specifications.

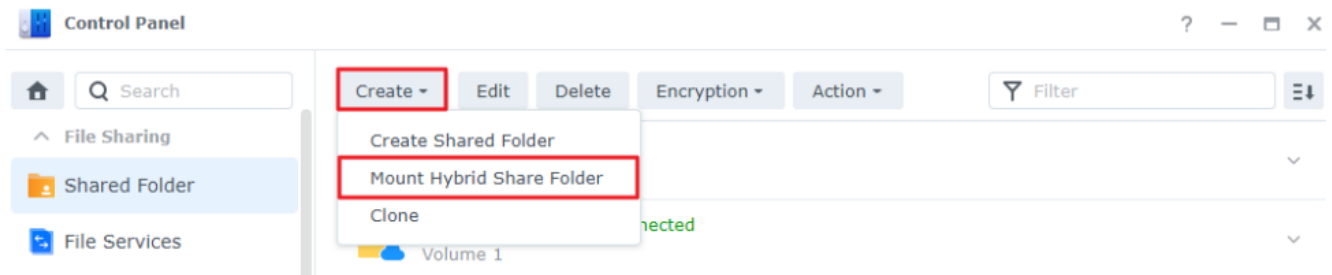
There are two ways to set up and initialize a Hybrid Share folder:

- Method 1: Mount a Hybrid Share Folder on your Synology NAS
- Method 2: Convert a shared folder to a Hybrid Share Folder

Method 1: Mount a Hybrid Share folder on your Synology NAS

You can create a new Hybrid Share folder on your Synology NAS, or you can mount a Hybrid Share folder that you've already created in C2 Storage onto your Synology NAS to initialize it. Refer to the Hybrid Share help article for detailed setup information.

1. In DSM, go to Control Panel > Shared Folder.
2. Click Create > Mount Hybrid Share Folder.

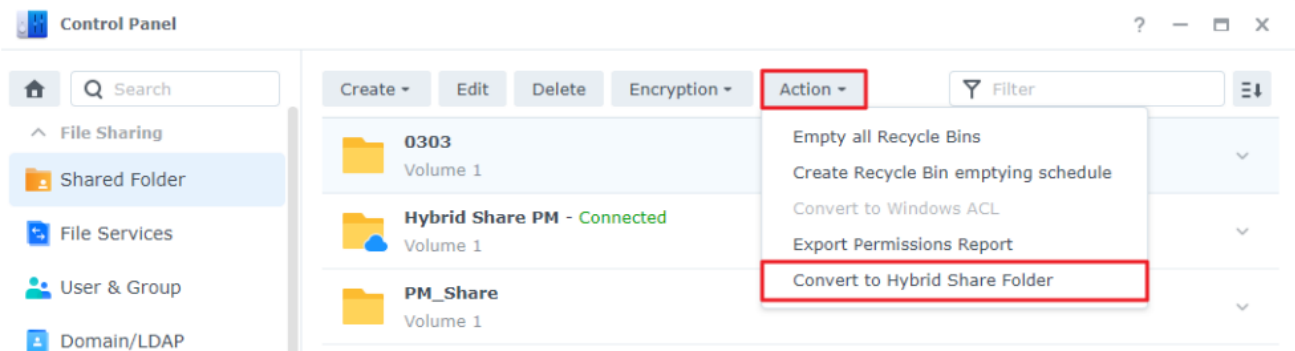


3. Click Start and sign in with your Synology Account credentials.
4. Click Allow to grant your Synology NAS access to C2 Storage. Click Next.
5. Do one of the following:
 - If you have not already created a Hybrid Share folder on C2 Storage, you will be prompted to do so:
 1. Enter a folder name and set a folder quota.
 2. Click Create.
 3. Enter and confirm an encryption key. Click Next.
 4. Click Yes to confirm and download the encryption key.
 - If you have already created Hybrid Share folders on C2 Storage, select one that you want mount on this Synology NAS, enter its encryption key, and click OK.
6. Set up the Hybrid Share folder's local information and enable options as needed. Click Next when done.
7. Specify a reserved local cache size.
8. Click Next, and configure user permissions. Then, click Done.

Method 2: Convert a shared folder to a Hybrid Share folder

You can convert an existing shared folder on your NAS and migrate its data to a Hybrid Share folder on C2 Storage. The Hybrid Share folder becomes initialized during the conversion process. Refer to the Hybrid Share help article for detailed setup information.

1. In DSM, go to Control Panel > Shared Folder.
2. Select the shared folder you want to convert.
3. Click Action > Convert to Hybrid Share Folder.



4. Click Start.
5. Click Allow to grant your Synology NAS access to C2 Storage.
6. If you have not already created a Hybrid Share folder on C2 Storage, you will be prompted to enter a folder name and set a folder quota. Otherwise, you can select an Uninitialized folder and click OK.

- Click Create to confirm.
- Enter and confirm an encryption key. Click Next.
- Click Yes to confirm and download the encryption key.
- Specify a reserved local cache size.
- Click Convert to confirm settings and initiate the conversion.

Edit and monitor your Hybrid Share folder

You can go to DSM Control Panel > Shared Folder or C2 Storage > Hybrid Share to view the status or edit the general information and access permissions of the Hybrid Share folders mounted on your Synology NAS.

Access and manage folders

Via C2 Storage Explorer

C2 Storage Explorer is a tool included with C2 Storage that allows you to access, share, and download your Hybrid Share data via a convenient and easy-to-use web portal.

For instructions and other information, refer to [What is C2 Storage Explorer](#).

Via file protocols

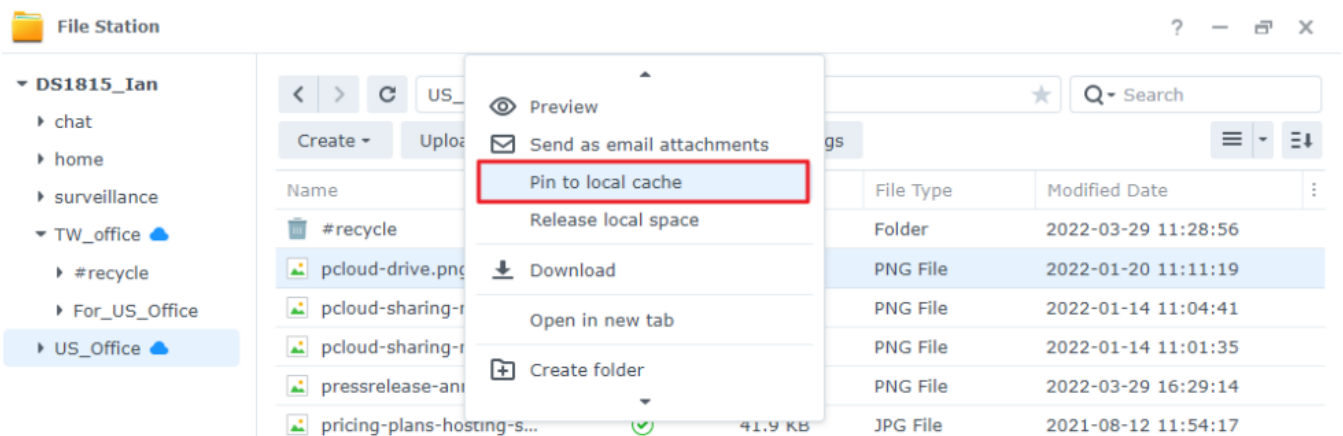
You can easily access your Hybrid Share folders using the supported file protocols, including SMB/CIFS, AFP, NFS, and FTP.

Via File Station

If you have files and folders in your Hybrid Share folder that you often use, you can pin them to the local cache for quicker access. Pinned files and folders will not be evicted from the local cache even if the available storage capacity is low, unless they are restored to a previous version.

Pin a file or folder

- Launch File Station.
- Go to the mounted Hybrid Share folder you want to access.
- Select the files or folders you want to pin and right-click on them.
- Select Pin to local cache from the drop-down menu.







Status icons of pinned folders

The following icons appear in File Station when you access a mounted Hybrid Share folder:

Icon Description



The file or folder is partially or completely stored on C2 Storage.

-  The file or folder is stored in the local cache.
-  The file or folder is pinned to the local cache.
-  Pinning or unpinning is in progress.
-  The file or folder failed to be pinned.

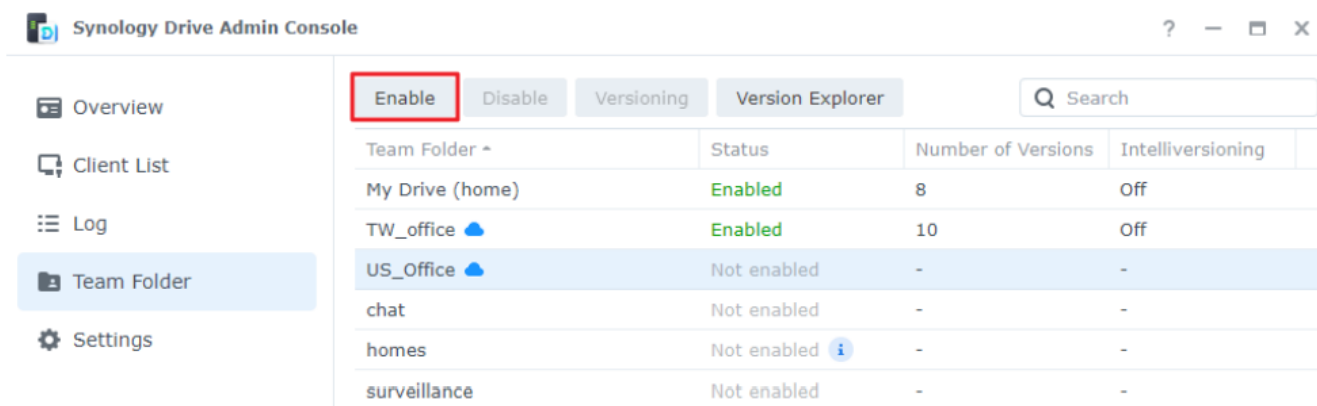
Via Synology Drive

For seamless file backup and collaboration, Hybrid Share can be linked with Synology Drive, Synology's private cloud service, adding even more efficiency to your Hybrid Share folder deployment.

You can also access Hybrid Share folders from the Drive mobile app, desktop client, and web portal. Make sure to enable the Hybrid Share folder as a Team Folder in Synology Drive Admin Console beforehand.

Enable version control

1. Increase flexibility even further by enabling granular restoration for files and folders stored in Hybrid Share folders.
2. Go to Synology Drive Admin Console.
3. On the Team Folder page, enable the Hybrid Share folder as a Team Folder.
4. Tick the Enable version control checkbox.

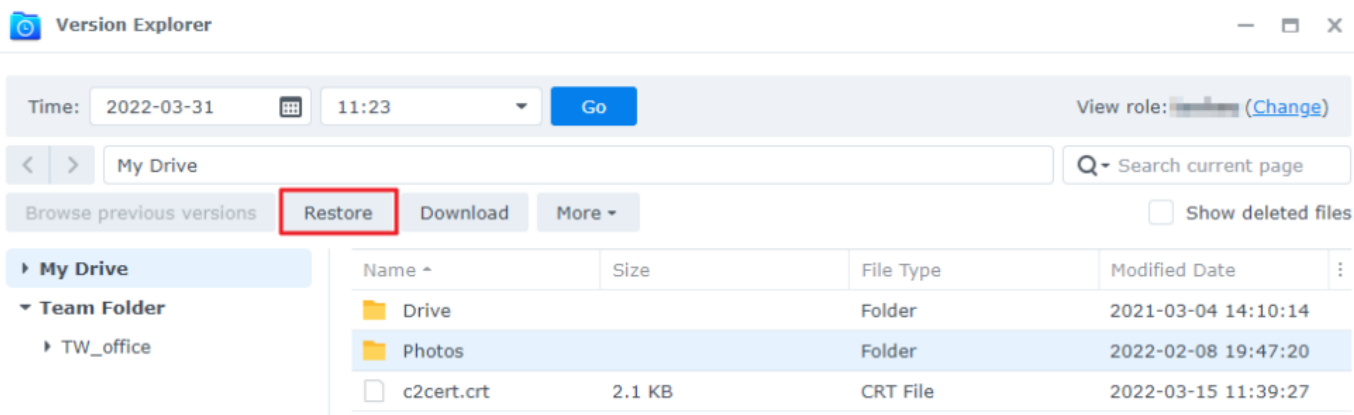


Team Folder ^	Status	Number of Versions	Intelliversioning
My Drive (home)	Enabled	8	Off
TW_office	Enabled	10	Off
US_Office	Not enabled	-	-
chat	Not enabled	-	-
homes	Not enabled	-	-
surveillance	Not enabled	-	-

5. Click OK.

Restore versions to your Synology NAS

1. Go to Synology Drive Admin Console.
2. Choose the target Hybrid Share folder.
3. Click the Version Explorer button and select Browse previous versions.
4. Browse or use the filter to find the version you want to restore.
5. Click Restore to restore the selected version.



Intelligent bandwidth offloading

You can free up bandwidth by allowing up to 5 users outside the local network to open and edit files directly from C2 Storage instead of accessing them from the NAS cache.

1. Go to Synology Drive Admin Console > Settings and scroll down to Direct Access to Hybrid Share from C2 Storage.
2. Tick the Leverage C2 Storage bandwidth to reduce network bandwidth from Synology NAS check box.
3. Select the users that you want to allow direct access to C2 Storage, and click Save.

Select Users

Allow up to 5 users to access files directly from C2 Storage.

Local users

Q Search

Enable	Name
<input checked="" type="checkbox"/>	admin
<input checked="" type="checkbox"/>	bbb
<input type="checkbox"/>	ianhsu

3 items

↻

2/5 users selected

Cancel

Save

4. Click Apply.

Notes:

- We do not recommend collaborating on Synology Office files in the same Hybrid Share folder that is mounted on different NAS. This may result in file conflicts and unexpected synchronization results.

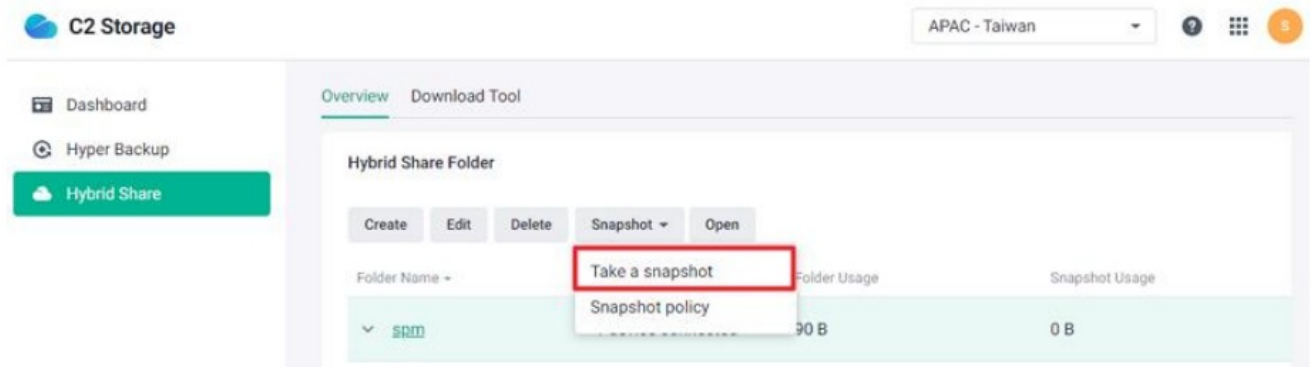
Protect your data by taking snapshots

The snapshot feature in the C2 Storage web portal allows near-instantaneous data protection of Hybrid Share folders.

Manually take snapshots

You can manually take an unlimited number of snapshots within 24 hours. Up to 32 snapshots can be kept.

1. Sign in to C2 Storage and go to the Hybrid Share page.
2. On the Overview page, select the folder you want to take a snapshot of, and click Snapshot > Take a snapshot.

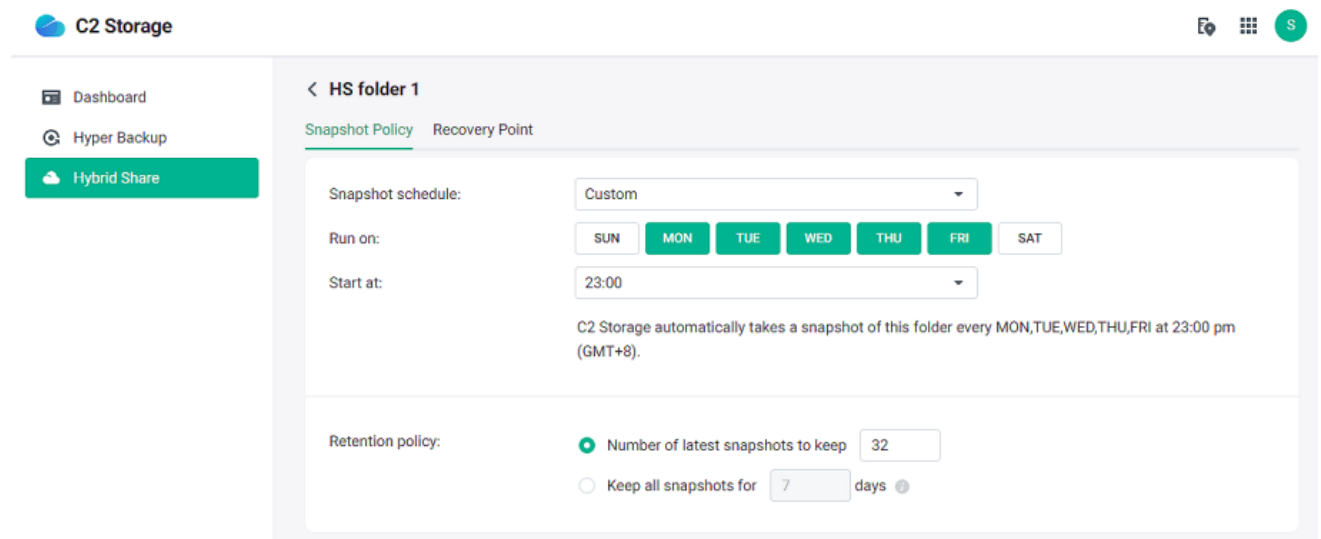


3. Enter the description and select whether to lock the snapshot to prevent it from being automatically removed whenever retention is triggered.
4. Click OK.

Schedule snapshots

C2 Storage automatically takes one snapshot within 24 hours according to the set schedule.

1. Sign in to C2 Storage and go to the Hybrid Share page.
2. On the Overview page, select the folder you want to schedule a snapshot of, and click Snapshot > Snapshot policy.

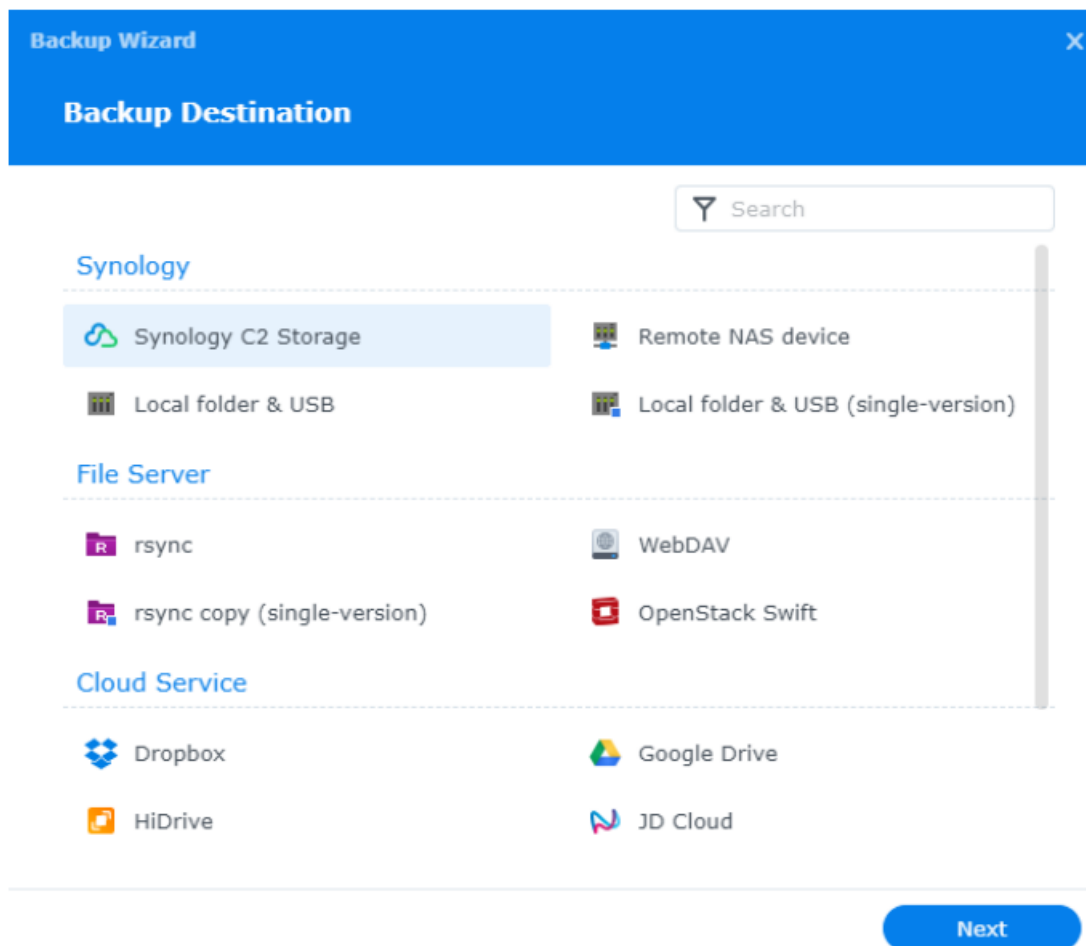


3. Configure the Snapshot schedule and Retention policy as needed.
4. Click Save.

For more information on how to take, delete, and restore snapshots, refer to [How to use Hybrid Share's snapshot feature in C2 Storage?](#).

Back up Hybrid Share folders with Hyper Backup

You can use Hyper Backup to back up your Hybrid Share folders so you can maintain multiple copies of the data in a Hybrid Share folder on other supported destinations.



To restore backed-up data, make sure to first restore the configurations of the mounted folder or mount a Hybrid Share folder with the same name. Then, proceed to perform data recovery with Hyper Backup.

Further reading


Software specs

Full software specs for Synology Hybrid Share can be found [here](#).

Related articles

- What is the local cache in Hybrid Share and how does it work?
- Important information about Hybrid Share's 30-day grace period
- What services/settings are affected when a Hybrid Share folder is restored to a previous version?

Documents / Resources

	<p>Synology DS3622xs+ DiskStation [pdf] Owner's Manual DS3622xs DiskStation, DS3622xs, DiskStation</p>
---	--

References

- [🔗 Compare Pricing Plan Options | C2 Storage](#)
- [🌐 identity.tw.c2.synology.com/](#)
- [📖 What is C2 Storage Explorer? - Synology Knowledge Center](#)
- [📖 What services/settings are affected when a Hybrid Share folder is restored to a previous version? - Synology Knowledge Center](#)
- [📖 How to use Hybrid Share's snapshot feature in C2 Storage? - Synology Knowledge Center](#)
- [📖 File Services | DSM - Synology Knowledge Center](#)
- [📖 Set Up a Hybrid Share Folder | Hybrid Share - Synology Knowledge Center](#)
- [📖 Edit a Hybrid Share Folder | Hybrid Share - Synology Knowledge Center](#)
- [📖 Manage Shared Files | Hybrid Share - Synology Knowledge Center](#)
- [📖 Monitor Hybrid Share Folder Usage | Hybrid Share - Synology Knowledge Center](#)
- [📖 Backup Tasks | Hyper Backup - Synology Knowledge Center](#)
- [📖 Synology Drive Admin Console | Synology Drive Server - Synology Knowledge Center](#)
- [📖 Synology Drive Server - Synology Knowledge Center](#)
- [📖 Important information about Hybrid Share's 30-day grace period - Synology Knowledge Center](#)
- [📖 What is the local cache in Hybrid Share and how does it work? - Synology Knowledge Center](#)
- [📖 How many Hybrid Share folders can I mount on my Synology NAS? - Synology Knowledge Center](#)
- [📖 Hybrid Share Quick Start Guide - Synology Knowledge Center](#)
- [📖 Hybrid Share Quick Start Guide - Synology Knowledge Center](#)
- [📖 Synology Knowledge Center](#)
- [📖 Synology Knowledge Center](#)
- [Syno Synology Inc.](#)
- [User Manual](#)