

SYNCWIRE
SW-XC653
Bluetooth
Transmitter



SYNCWIRE SW-XC653 Bluetooth Transmitter User Manual

[Home](#) » [SYNCWIRE](#) » SYNCWIRE SW-XC653 Bluetooth Transmitter User Manual 

Contents

- [1 SYNCWIRE SW-XC653 Bluetooth Transmitter](#)
- [2 Package contents:](#)
- [3 Specifications:](#)
- [4 Product Overview:](#)
- [5 How to use:](#)
- [6 FCC Statement](#)
- [7 FREQUENTLY ASKED QUESTIONS](#)
- [8 VIDEO – PRODUCT OVERVIEW](#)
- [9 References](#)

SYNCWIRE

SYNCWIRE SW-XC653 Bluetooth Transmitter



This Bluetooth Car FM Transmitter lets you stream music and calls directly from your Bluetooth device to your car's FM stereo system. The built-in Bluetooth V5.1 provides a hands-free call function and Siri/Google Voice Assistant. Bass boost for enhanced audio performance. It also features dual charging ports (QC 3.0 & PD 20W) which will greatly save mobile charging time. Please read the User Manual carefully before using it. Hope this device makes your driving more interesting and safer.

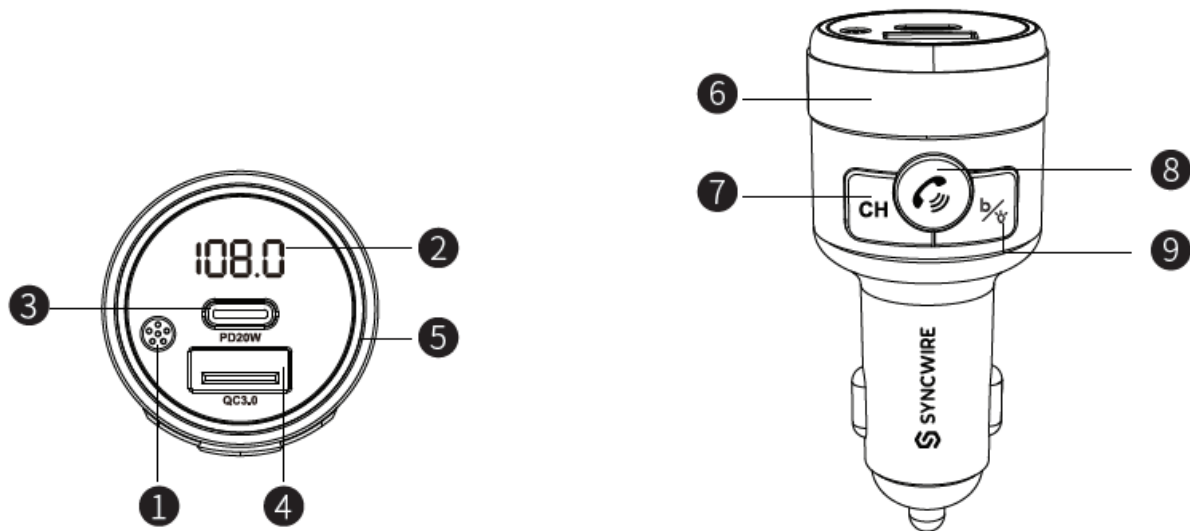
Package contents:

- Car Wireless FM Transmitter
- User Manual

Specifications:

Model	SW-XC653
Bluetooth Version	V5.1
Bluetooth Connection Distance	10m (Max.)
Frequency Range	87.5-108.0MHz
FM Transmission Distance	Approx.3m
Input	DC12-24V 4A(Max)
USB-A Output	QC3.0(5V \equiv 3A, 9V \equiv 2A, 12V \equiv 1.5A)
Type-C Output	PD 20W (5V \equiv 3A, 9V \equiv 2.22A, 12V \equiv 1.67A)
Total Power	38W(Max)
Product Weight	Approx. 47g
Product Size	Approx. 83*36mm

Product Overview:



1. Mic
2. FM Channel Display
3. PD 20W
4. QC 3.0 Circle ring light
5. 6 Rotatory Knob (Channel up/down, Volume up/down)
6. Volume up/down)
7. CH Button
8. Multi-function Button (Answer/Hang off, Play / Pause)
9. Bass Booster Button

Tips:

1. Press and hold the “CH” button for 2 seconds to turn off the FM/Display/Bluetooth function on the device, only keeps charging. Press and hold the “CH” button for 2 seconds again to turn on.
2. While Bluetooth music is playing, double press Multi-function Button and turn the knob clockwise or anticlockwise to skip the next song or go back to the previous song. 1. Press and hold the “CH” button for 2 seconds to turn off the FM/Display/Bluetooth function on the device, only keep charging. Press and hold the “CH” button for 2 seconds again to turn on. 2. While Bluetooth music is playing, double press the Multi-function Button and turn the knob clockwise or anticlockwise to skip the next song or go back to the previous song.

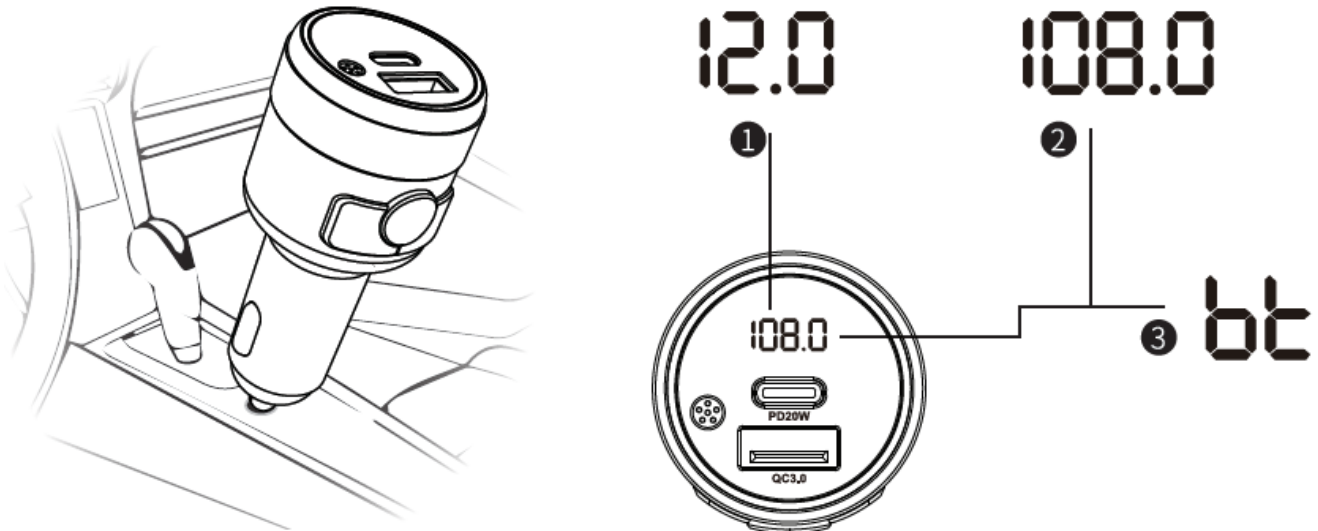
How to use:

FM Transmitter Radio

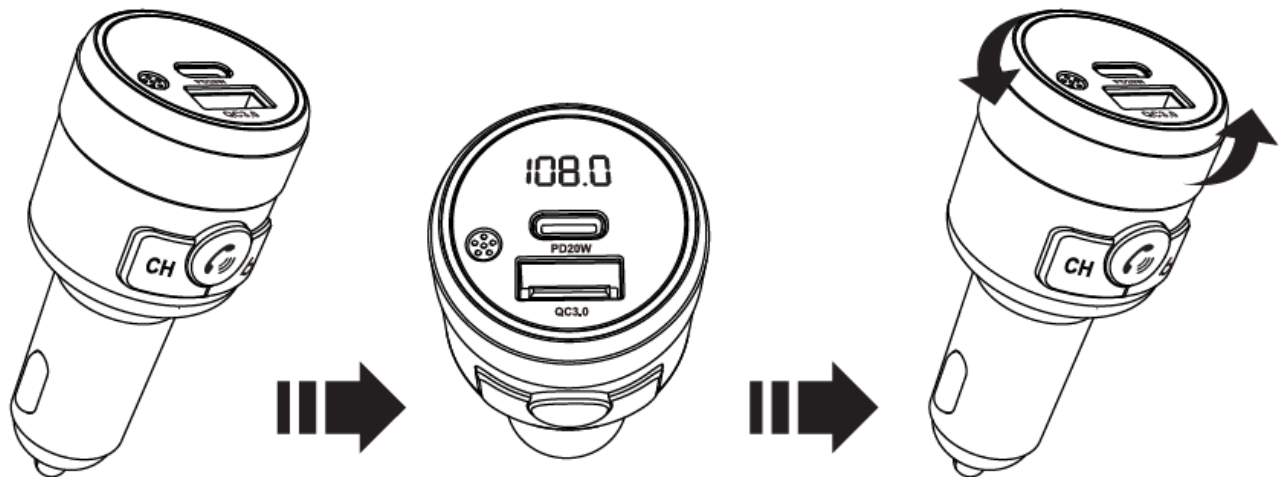
1. Tune the car radio to an unused FM frequency.



2. Plug the FM transmitter into the cigarette lighter or power port. It will be automatically powered on with the LED displaying the vehicle's battery voltage, and FM frequency, then showing the word "bt".



3. Adjust this transmitter to the same frequency on the car by pressing the CH button, rotate the knob (left or right) when the LED displays FM frequency.

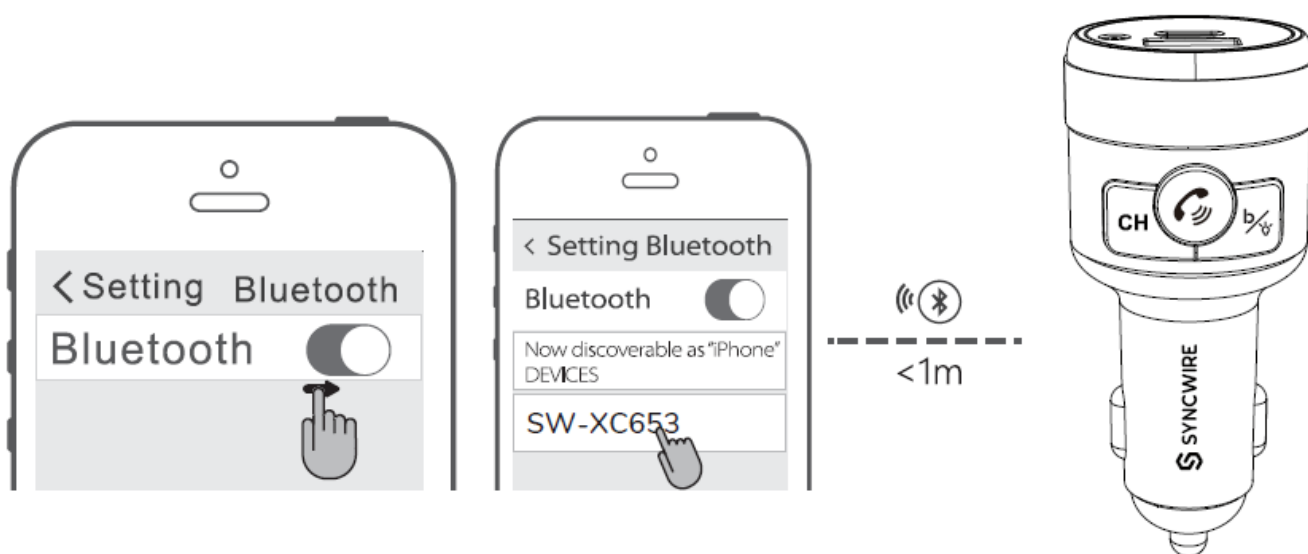


Tips for the best audio quality:

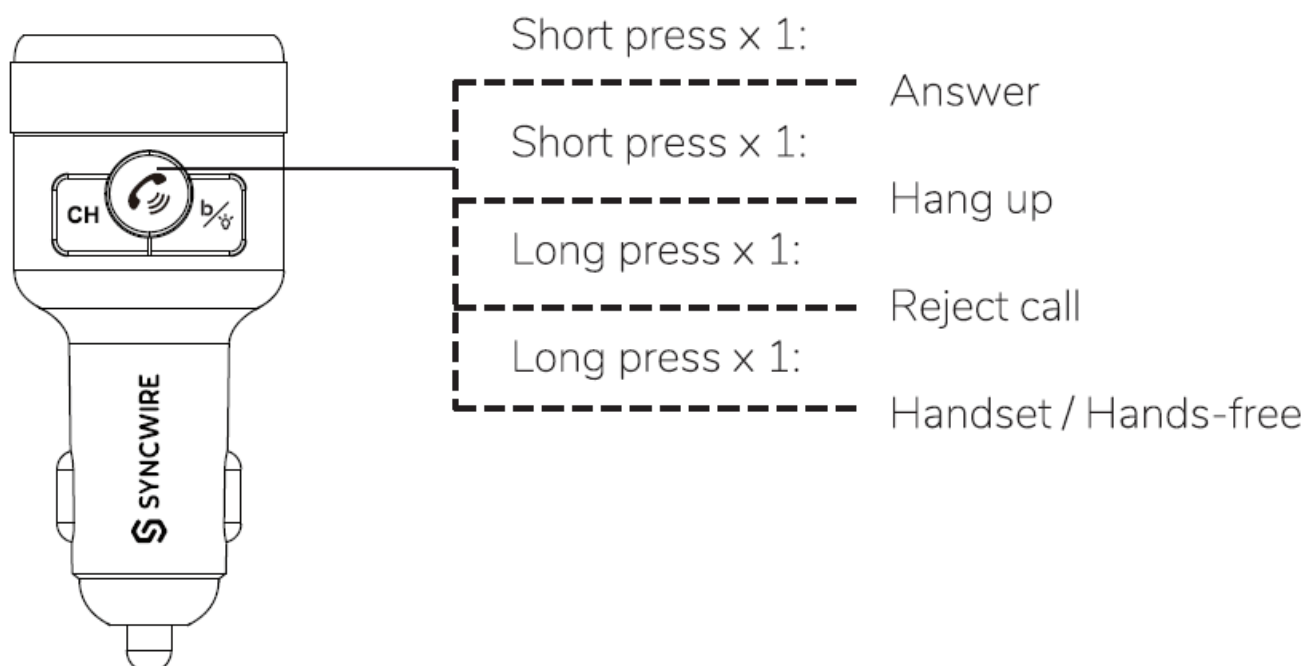
1. Find the idle frequency with minimal interference.
2. **Volume control:** adjust the volume of the car radio to 1/3 or 1/2, but not exceed 2/3; the phone to 2/3 or 4/5, but not to full volume.

Bluetooth Pairing:

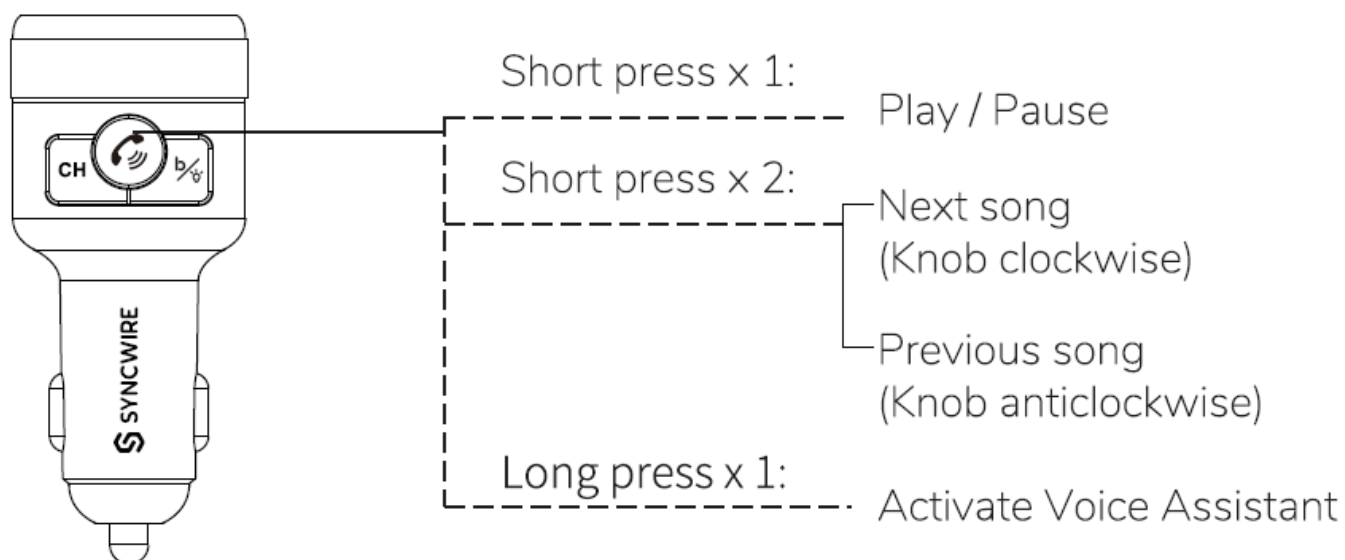
1. When the LED display shows “bt” the device will enter Bluetooth pairing mode.
2. Enable Bluetooth on the device you want to pair.
3. Search and select ID “SW-XC653” from the list, then connect.
4. If asked enter the pairing code ‘0000’ or ‘1234’.



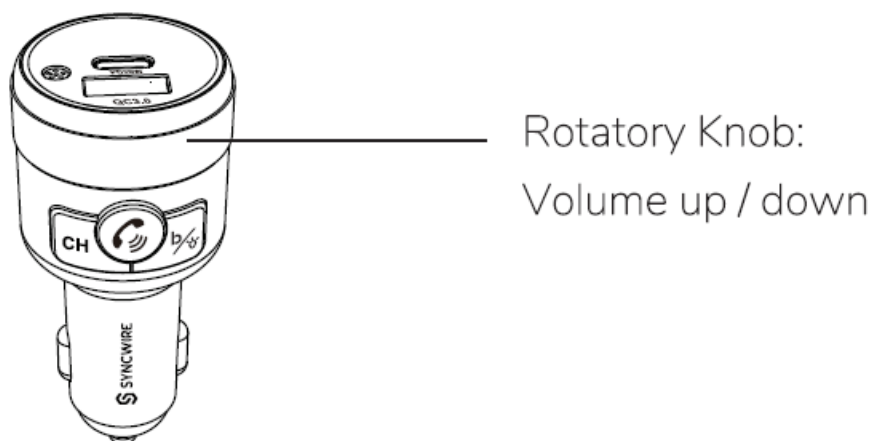
Bluetooth Calling:



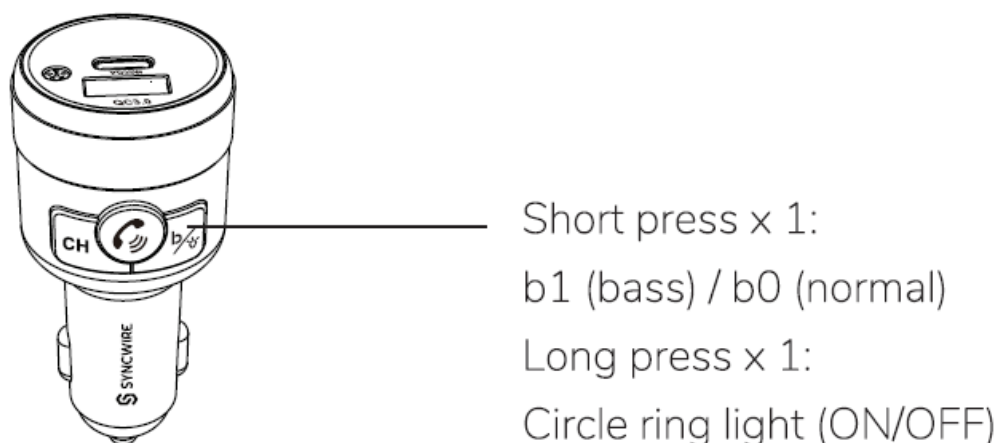
Playing and Controlling the Music:



When in Bluetooth mode press and hold the (Multi-function Button) to activate the voice assistant on your mobile phone (Siri or Google Assistant etc.)



Bass Booster Button:



Note:

In the music-playing mode, when there is an incoming call, it will automatically switch to telephone mode and play the phone number in English. If the volume was set below 22 at the last use, the next time you use the transmitter it will default to 24. If it was between 23 and 30 the last time it was used, it will be kept at the same level the next time it is turned on.

Charging Mode:

When this Bluetooth transmitter is powered by a car lighter socket, connecting the PD Type-C port / QC 3.0 USB port to your mobile phone with a required cable (not included), it will serve as a mobile phone charger. Voltage outputs: PD 20W & QC 3.0 18W dual port fast charging.

Cautions:

1. When the car's battery voltage is less than 12V, the LED display will flash to remind you to charge the car battery.
2. The transmitter will connect to the pre-set phone automatically when turning it on. (Keep Bluetooth function activated).
3. Hang up via the phone if answering with the handset.
4. Please do not use the transmitter in severe high temperatures, humidity, dusty or corrosive environments.
5. Please remove the product from the cigarette lighter when not in use for a long time.
6. Never disassemble the product without due permission, otherwise, the warranty will be invalid.

FCC Statement

Changes or modifications not expressly approved by the party responsible for compliance could void the user's authority to operate the equipment. This device complies with part 15 of the FCC Rules.

Operation is subject to the following two conditions:

1. This device may not cause harmful interference
2. this device must accept any interference received, including interference that may cause undesired operation.

Note: This equipment has been tested and found to comply with the limits for a Class B digital device, under Part 15 of the FCC Rules. These limits are designed to provide reasonable protection against harmful interference in a residential installation. This equipment generates, uses, and can radiate radio frequency energy, and if not installed and used by the instructions, may cause harmful interference to radio communications. However, there is no guarantee that interference will not occur in a particular installation. If this equipment does cause harmful interference to radio or television reception, which can be determined by turning the equipment off and on, the user is encouraged to try to correct the interference by one or more of the following measures. Reorient or relocate the receiving antenna. Increase the separation between the equipment and the receiver. Connect the equipment to an outlet on a circuit different from that to which the receiver is connected. Consult the dealer or an experienced radio / TV technician for help. This equipment complies with FCC radiation exposure limits set forth for an uncontrolled environment. The End user must follow the specific operating instructions to satisfy RF exposure compliance. This transmitter must not be co-located or operating in conjunction with any other antenna or transmitter.

EC REP

- Prolinx GmbH
- Brehmstr.56, 40239 Duesseldorf Germany

UK REP

- Syncwire UK Ltd
- C/O Lai and Co.109 Portland Street, Manchester, M1 6N

FREQUENTLY ASKED QUESTIONS

What is the maximum charging power of the SYNCWIRE SW-XC653 Bluetooth Transmitter?

The SYNCWIRE SW-XC653 supports a maximum total power of 38W, combining the 20W PD port and Quick Charge 3.0 port for efficient dual-device charging.

How does Bluetooth 5.3 in the SYNCWIRE SW-XC653 enhance connectivity?

The built-in Bluetooth 5.3 technology in the SYNCWIRE SW-XC653 ensures a faster pairing process, more stable connections, and improved streaming quality for audio and hands-free calls.

Can I use the SYNCWIRE SW-XC653 in trucks or only cars?

The SYNCWIRE SW-XC653 Bluetooth transmitter is compatible with both 12V and 24V systems, making it suitable for cars and trucks.

What devices are compatible with the SYNCWIRE SW-XC653 Bluetooth transmitter?

This transmitter works with a wide range of Bluetooth devices, including iPhones, iPads, Android smartphones, tablets, MP3 players, and more.

How do I adjust the FM channel on the SYNCWIRE SW-XC653?

To adjust the channel, double-click the multifunction (calling) button to make the channel display flash, then rotate the knob to tune to the desired frequency.

What audio features does the SYNCWIRE SW-XC653 offer for music playback?

The SYNCWIRE SW-XC653 comes with Hi-Fi Deep Bass functionality and a dedicated bass key to enhance stereo effects, ensuring crystal-clear sound for an enjoyable listening experience.

Can the SYNCWIRE SW-XC653 sync audio from navigation apps?

Absolutely, it streams audio from navigation apps like Google Maps or Waze, as well as voice assistants such as Siri or Google Assistant.

What kind of LED backlight does the SYNCWIRE SW-XC653 have?

The SYNCWIRE SW-XC653 is equipped with a blue LED backlight that pulses with the rhythm of the music, adding a stylish and functional element to your car's ambiance.

How fast is charging with the SYNCWIRE SW-XC653 compared to regular chargers?

With a charging efficiency 80% higher than standard chargers, the SYNCWIRE SW-XC653 provides a quick and convenient charging experience for your devices.

What is the size and weight of the SYNCWIRE SW-XC653 transmitter?

The device has compact dimensions of 3.58 x 2.4 x 1.54 inches and weighs just 2.39 ounces, making it portable and easy to use in any vehicle.

How does the SYNCWIRE SW-XC653 improve call quality?

The SYNCWIRE SW-XC653 uses advanced Noise Suppression (CVC) technology to minimize background noise, ensuring crystal-clear audio for both the caller and receiver.

Can the SYNCWIRE SW-XC653 be paired with multiple devices?

While it pairs seamlessly with most Bluetooth devices, it connects to one device at a time, ensuring stable and uninterrupted performance.

Why is the SYNCWIRE SW-XC653 Bluetooth Transmitter not pairing with my device?

Ensure the transmitter is in pairing mode (indicator light blinking). Check if the device supports Bluetooth

and is within 10 meters. Clear the transmitter's pairing list by resetting it and try pairing again.

Why does the SYNCWIRE SW-XC653 Bluetooth Transmitter disconnect from my device?

Weak signals, interference from other wireless devices, or low battery can cause disconnections. Keep devices close, charge the transmitter, and minimize interference to maintain a stable connection.

How do I reset the SYNCWIRE SW-XC653 Bluetooth Transmitter?

Hold the multifunction button for 10 seconds until the LED light flashes rapidly, indicating the device has been reset to factory settings.

Why is there no audio when using the SYNCWIRE SW-XC653 Bluetooth Transmitter?

Ensure the transmitter is connected to the correct audio port and volume is not muted. Check compatibility with the connected device and ensure the Bluetooth pairing is successful.

VIDEO – PRODUCT OVERVIEW



[Download the PDF link SYNCWIRE SW-XC653 Bluetooth Transmitter User Manual Bluetooth-Transmitter-User-Manual.mp4](#)

References

- [User Manual](#)

[Manuals+](#), [Privacy Policy](#)

This website is an independent publication and is neither affiliated with nor endorsed by any of the trademark owners. The "Bluetooth®" word mark and logos are registered trademarks owned by Bluetooth SIG, Inc. The "Wi-Fi®" word mark and logos are registered trademarks owned by the Wi-Fi Alliance. Any use of these marks on this website does not imply any affiliation with or endorsement.