

SYNCHRO TRIMIX-S3A Control Box User Manual

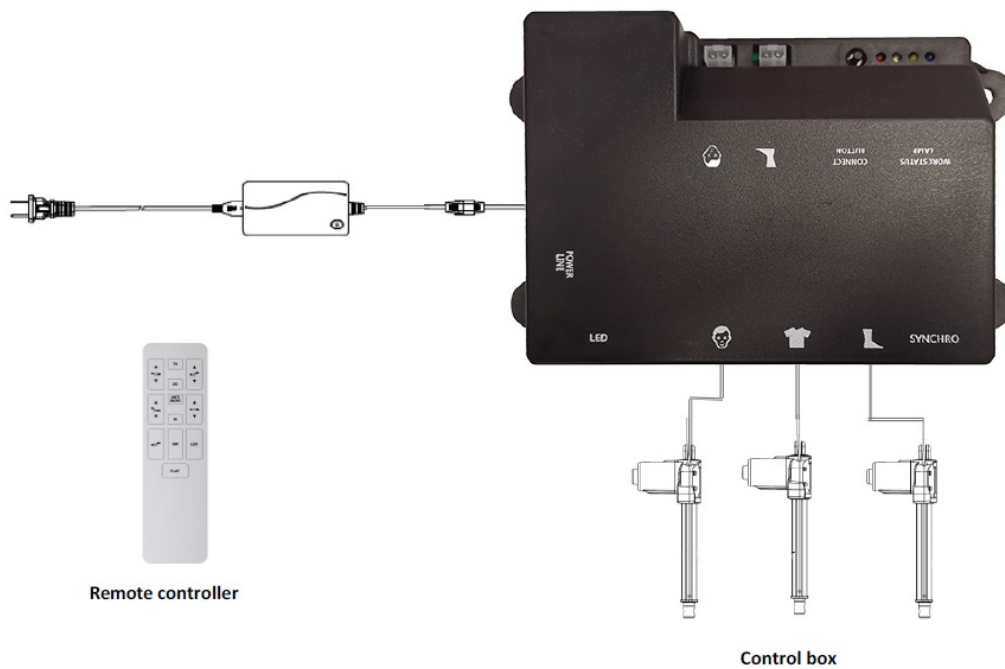
[Home](#) » [SYNCHRO](#) » SYNCHRO TRIMIX-S3A Control Box User Manual 

Contents

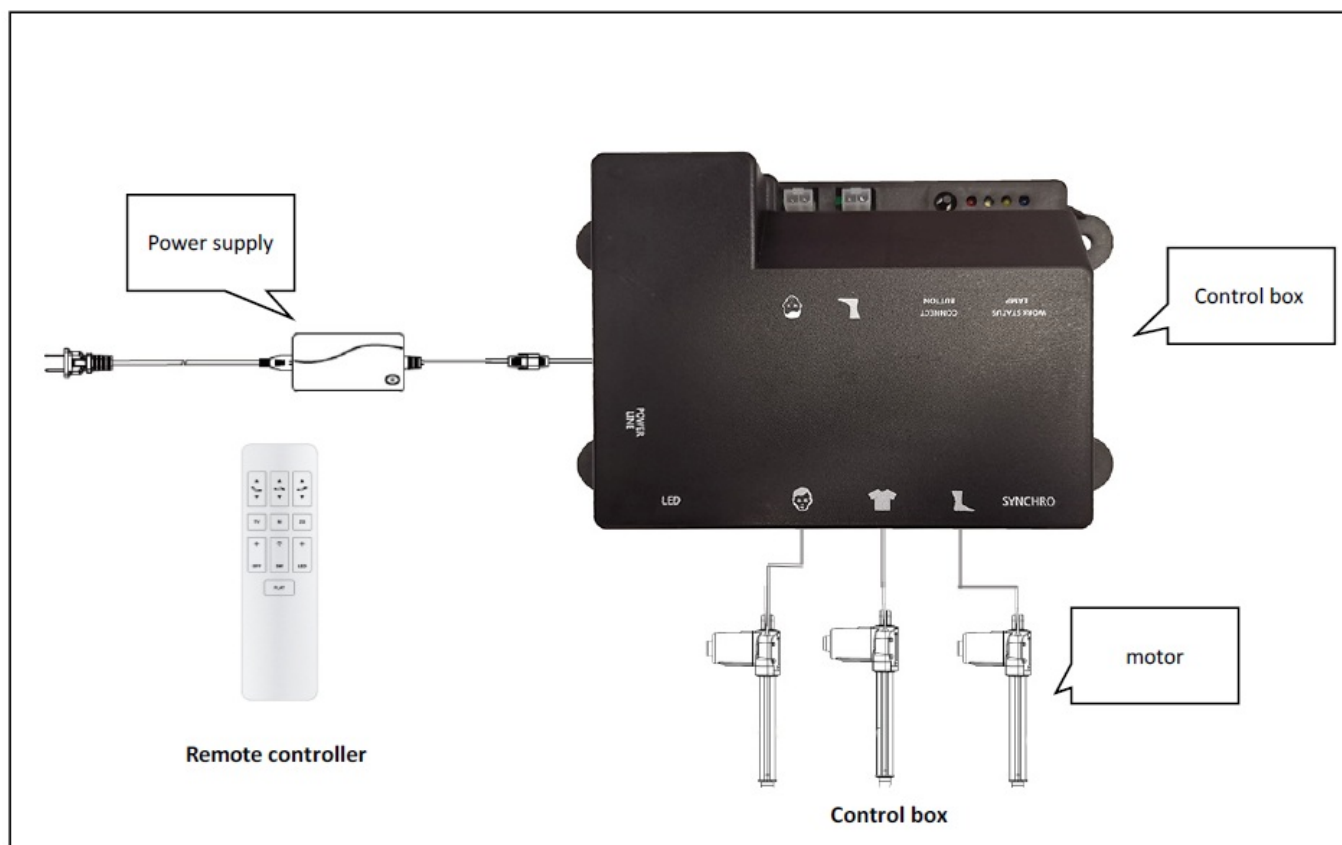
- [1 SYNCHRO TRIMIX-S3A Control Box](#)
- [2 ELECTRONICS OVERVIEW](#)
- [3 PAIRING THE WIRELESS REMOTE](#)
- [4 FUNCTIONAL OPERATING FOR WIRELESS REMOTE](#)
- [5 FUNCTIONAL OPERATING FOR WIRELESS REMOTE](#)
- [6 FCC Statement](#)
- [7 Documents / Resources](#)
- [8 Related Posts](#)

SYNCHRO

SYNCHRO TRIMIX-S3A Control Box



ELECTRONICS OVERVIEW



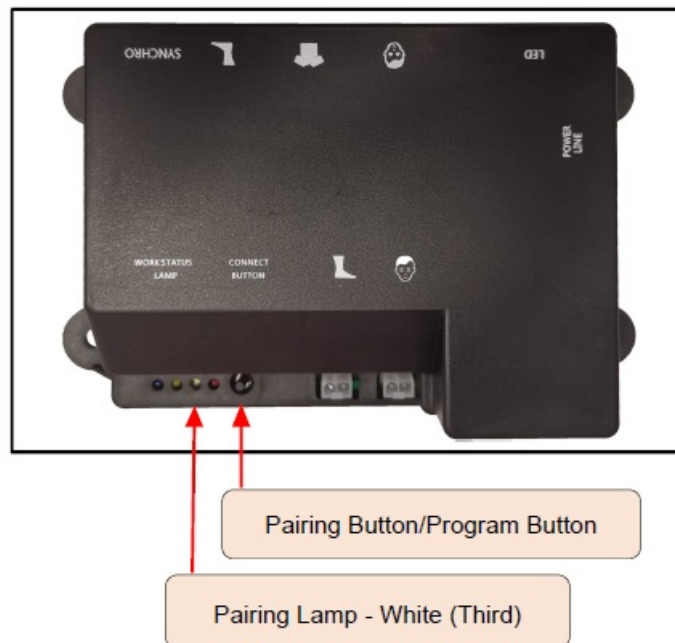
PAIRING THE WIRELESS REMOTE

STEP 1

Push in on bottom of remote to release battery cartridge and install three AAA batteries into the remote battery compartment. Push in firmly to close.

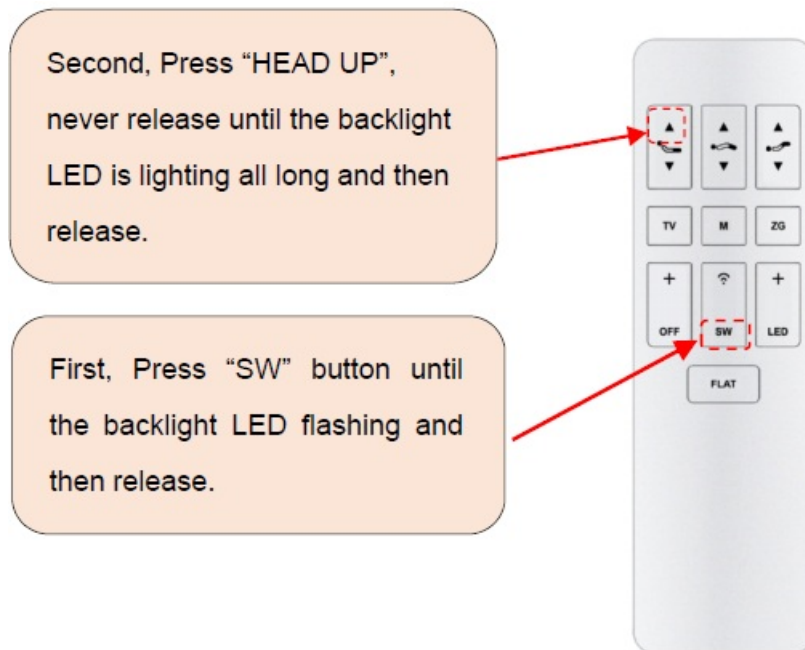
STEP 2

Plug the base into a power source and press the Pairing Button/Program Button on the control box approximately in 1s, ensure the Pairing Lamp – White (Third) flashing.



STEP 3

- Press "SW" until the backlight LED flashing, release it and then press "HEAD UP", never release until the backlight LED is lighting all long, the remote is pairing and release it.

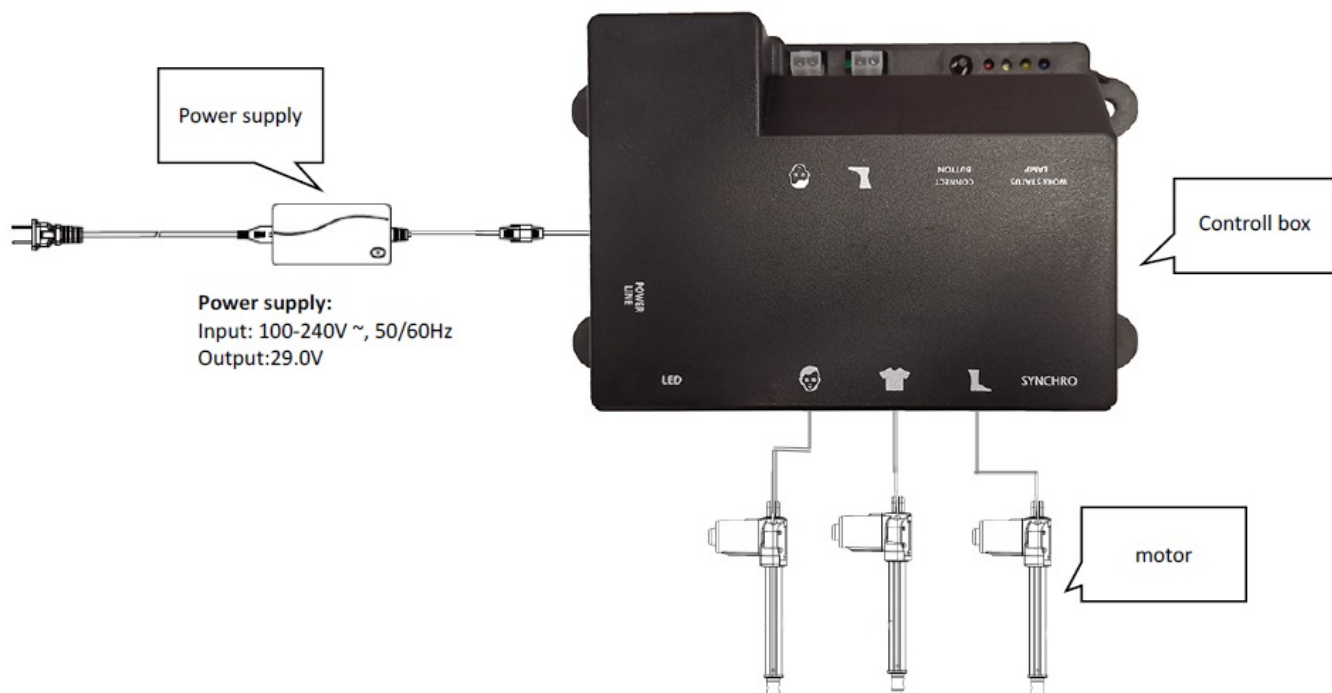


- When the Pairing Button/Program Button on the control box and the backlight LED on the remote stop flashing, and the buzzer on the control box has a "DI" sound, pairing is completed.
- If the function on the remote can not be operated, repeat the pairing again.

FUNCTIONAL OPERATING FOR WIRELESS REMOTE

MARK	STEP1	STEP2	FUNCTION	DESCRIPTIONS
	Press “S W” in 3s until the backlight LED flashing and then press the “BUTTON” in STEP 2	TV	MEMORY POSITION	The backlight LEDs all OFF before operating.
		ZG		I Press TV,ZG until the backlight LED is lighting and the memory position is completed.
				I When the backlight LED is lighting and press again, clear the corresponding memory position.
				I TV & ZG have the memory position.
		ANTISNORE		New ANTI-SNORE preset position and five minutes will be reset.
		HEAD DOWN	FUNCTIONS IN CIRCLING	Head up and down functions in circling.
		BACK DOWN		All bed base functions up and down in circling.
		FOOT DOWN		Foot up and down functions in circling.
		HIP DOWN		Hip up and down functions in circling.
		FOOT UP	SHORT CUT	Foot down tilt (Music position).
		HIP UP	KEY	Head down tilt (Leg relaxing position).
		HEAD UP	PAIRING	Pairing the remote and control box.
		FLAT	FORCED RESET	The bed will be in FLAT position when the bed is breakdown.

FUNCTIONAL OPERATING FOR WIRELESS REMOTE



Motor: By pairing the remote control with the control box, the motor can be controlled up and down

FCC Statement

This device complies with part 15 of the FCC Rules. Operation is subject to the following two conditions:

(1) This device may not cause harmful interference, and (2) this device must accept any interference received, including interference that may cause undesired operation.

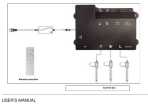
Any changes or modifications not expressly approved by the party responsible for compliance could void the user's authority to operate the equipment. This equipment has been tested and found to comply with the limits for a Class B digital device, pursuant to part 15 of the FCC Rules. These limits are designed to provide reasonable protection against harmful interference in a residential installation. This equipment generates, uses and can radiate radio frequency energy and, if not installed and used in accordance with the instructions, may cause harmful interference to radio communications. However, there is no guarantee that interference will not occur in a particular installation. If this equipment does cause harmful interference to radio or television reception, which can be determined by turning the equipment off and on, the user is encouraged to try to correct the interference by one or more of the following measures:

- Reorient or relocate the receiving antenna.
- Increase the separation between the equipment and receiver.
- Connect the equipment into an outlet on a circuit different from that to which the receiver is connected.
- Consult the dealer or an experienced radio/TV technician for help.

FCC Radiation Exposure Statement:

This equipment complies with FCC radiation exposure limits set forth for an uncontrolled environment . This transmitter must not be co-located or operating in conjunction with any other antenna or transmitter. For Control Box device This equipment should be installed and operated with a minimum distance of 20cm between the radiator & your body.

Documents / Resources



[SYNCHRO TRIMIX-S3A Control Box](#) [pdf] User Manual

TRIMIX-S3A, TRIMIXS3A, 2AXVZ-TRIMIX-S3A, 2AXVZTRIMIXS3A, TRIMIX-RF06A, TRIMIXR F06A, 2AXVZ-TRIMIX-RF06A, 2AXVZTRIMIXRF06A, TRIMIX-S3A, Control Box