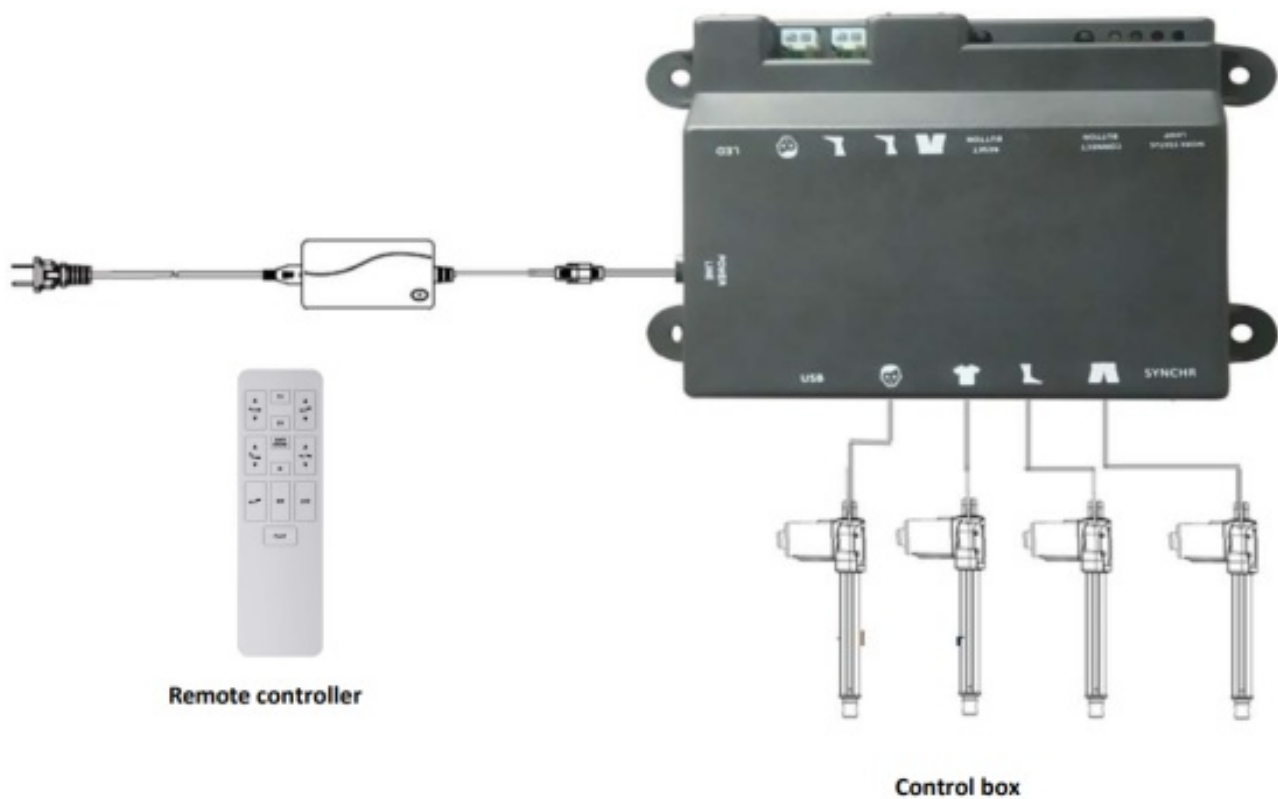


SYNCHR TRIMIX-S4 Control Box User Manual

[Home](#) » [SYNCHR](#) » SYNCHR TRIMIX-S4 Control Box User Manual 

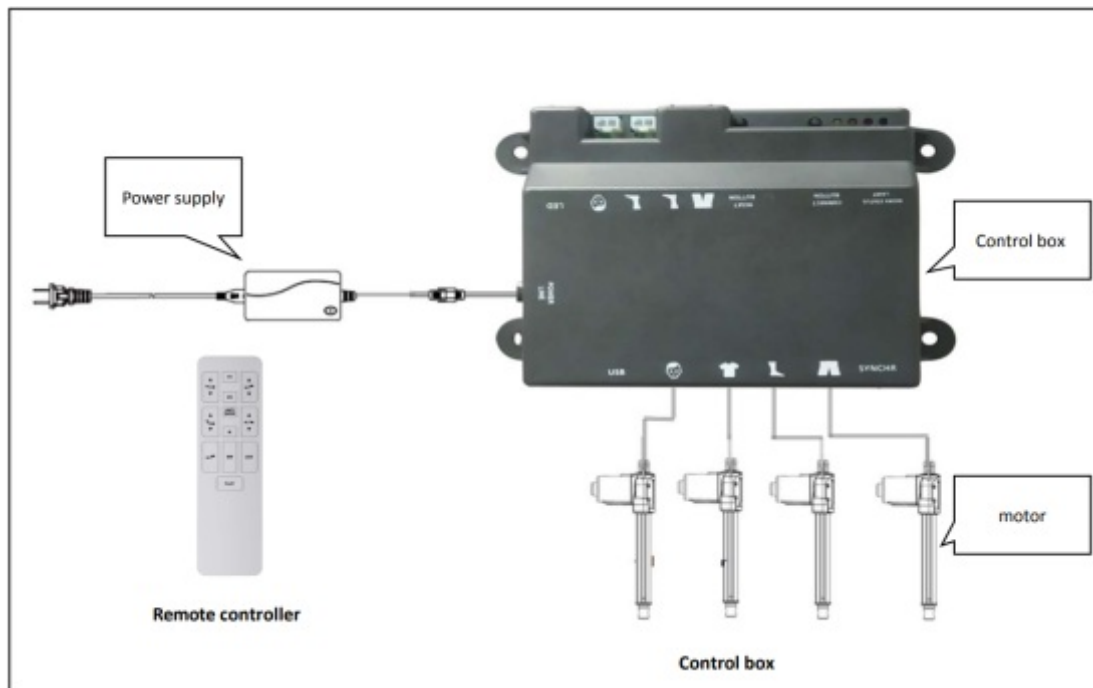
SYNCHR TRIMIX-S4 Control Box



Contents

- [1 ELECTRONICS OVERVIEW](#)
- [2 PAIRING THE WIRELESS REMOTE](#)
- [3 FUNCTIONAL OPERATING FOR WIRELESS REMOTE](#)
- [4 Product interface description](#)
- [5 Documents / Resources](#)
- [6 Related Posts](#)

ELECTRONICS OVERVIEW



PAIRING THE WIRELESS REMOTE

STEP 1

Push in on bottom of remote to release battery cartridge and install three AAA batteries into the remote battery compartment. Push in firmly to close.

STEP 2

- Plug the base into a power source and press the Pairing Button/Program Button on the control box approximately in 1s, ensure the Pairing Lamp – White (Third) flashing.



Pairing Button/Program Button

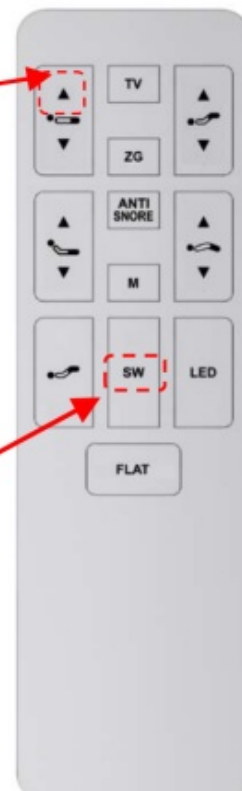
Pairing Lamp - White (Third)

STEP 3

- Press “SW” until the backlight LED flashing, release it and then press “HEAD UP”, never release until the backlight LED is lighting all long, the remote is pairing and release it.

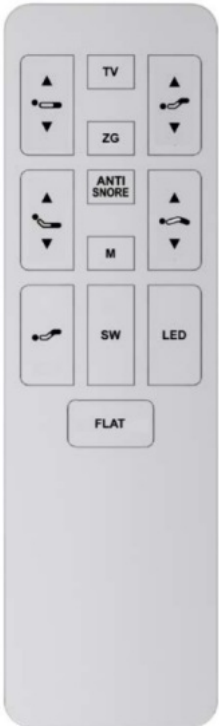
Second, Press “HEAD UP”, never release until the backlight LED is lighting all long and then release.

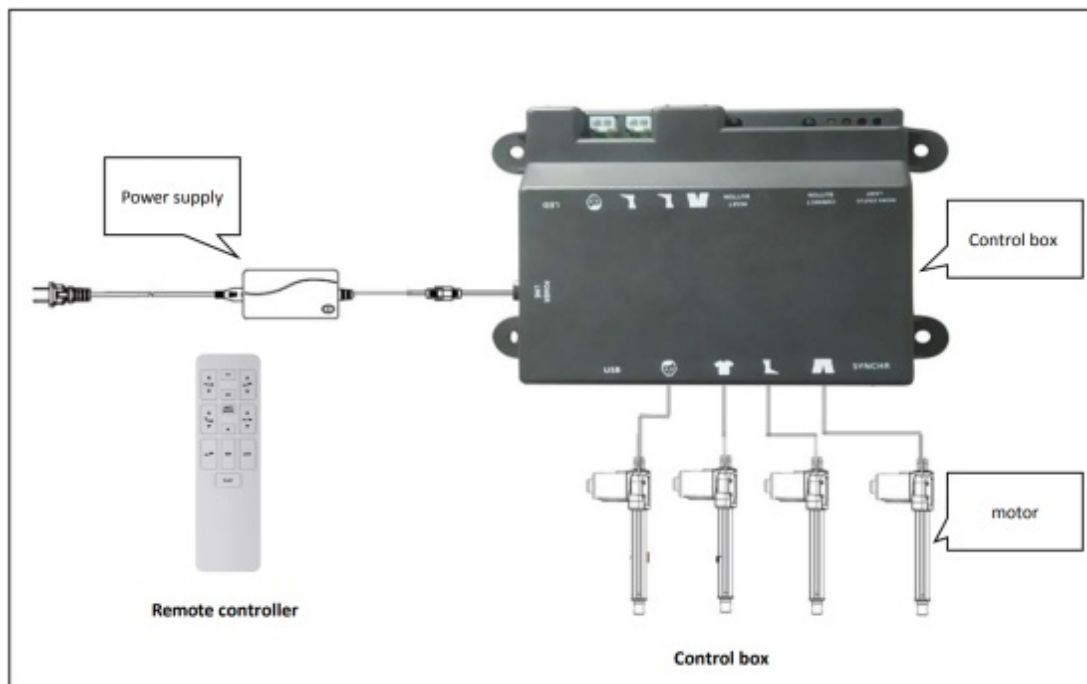
First, Press “SW” button until the backlight LED flashing and then release.



- When the Pairing Button/Program Button on the control box and the backlight LED on the remote stop flashing, and the buzzer on the control box has a “DI” sound, pairing is completed.
- If the function on the remote can not be operated, repeat the pairing again.

FUNCTIONAL OPERATING FOR WIRELESS REMOTE

MARK	STEP 1	STEP 2	FUNCTION	DESCRIPTIONS
	Press “SW” in 3s until the backlight LED flashing and then press the “BUTTON” in STEP 2	TV	MEMORY POSITION	The backlight LEDs all OFF before operating.
		ZG		<ul style="list-style-type: none"> • Press (TV,ZG) until the backlight LED is lighting and the Memory position is completed. • When the backlight LED is lighting and press again, clear The corresponding memory position. • TV & ZG have the memory position.
		ANTISNORE		New ANTI-SNORE preset position and five minutes will be reset.
		HEAD DOWN	FUNCTIONS IN CIRCLING	Head up and down functions in circling.
		BACK DOWN		All bed base functions up and down in circling.
		FOOT DOWN		Foot up and down functions in circling.
		HIP DOWN		Hip up and down functions in circling.
		FOOTUP	SHORTCUT KEY	Foot down tilt (Music position).
		HIP UP		Head down tilt (Leg relaxing position).
		HEAD UP	PAIRING	Pairing the remote and control box.
		FLAT	FORCED RESET	The bed will be in FLAT position when the bed is breakdown.



Power supply:

Input: 100-240V ~, 50/60Hz

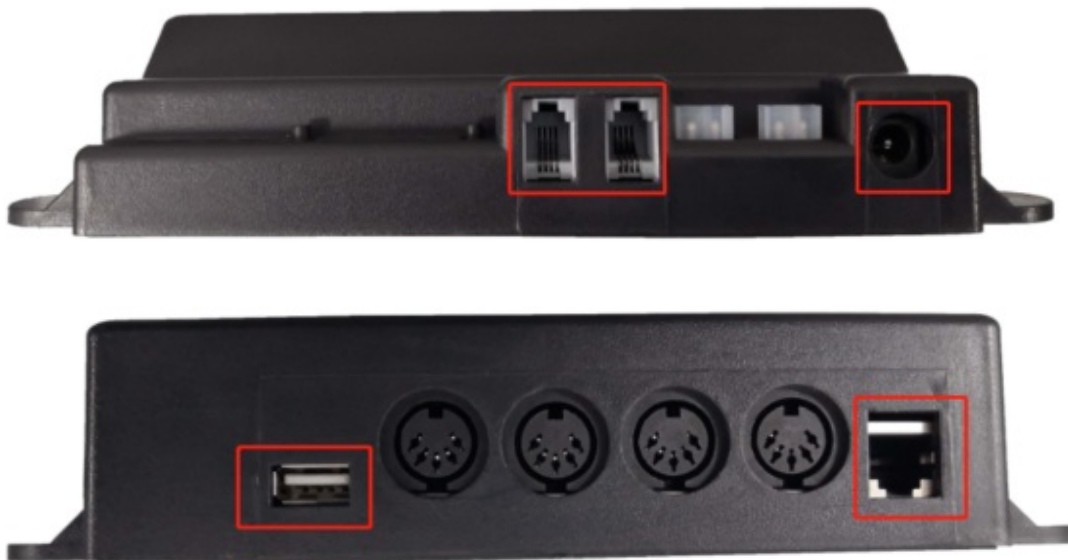
Output: 29.0V

Motor: By pairing the remote control with the control box, the motor can be controlled up and down

Product interface description

The interfaces in the red box below are only used for engineering testing and are not open to consumers.





FCC Statement

This device complies with part 15 of the FCC Rules. Operation is subject to the following two conditions:
 (1) This device may not cause harmful interference, and (2) this device must accept any interference received, including interference that may cause undesired operation.

Any changes or modifications not expressly approved by the party responsible for compliance could void the user's authority to operate the equipment.

This equipment has been tested and found to comply with the limits for a Class B digital device, pursuant to part 15 of the FCC Rules.

These limits are designed to provide reasonable protection against harmful interference in a residential installation. This equipment generates, uses and can radiate radio frequency energy and, if not installed and used in accordance with the instructions, may cause harmful interference to radio communications.

However, there is no guarantee that interference will not occur in a particular installation. If this equipment does cause harmful interference to radio or television reception, which can be determined by turning the equipment off and on, the user is encouraged to try to correct the interference by one or more of the following measures:

- Reorient or relocate the receiving antenna.
- Increase the separation between the equipment and receiver.
- Connect the equipment into an outlet on a circuit different from that to which the receiver is connected.
- Consult the dealer or an experienced radio/TV technician for help.

FCC Radiation Exposure Statement:

This equipment complies with FCC radiation exposure limits set forth for an uncontrolled environment . This transmitter must not be colocated or operating in conjunction with any other antenna or transmitter

Documents / Resources

	<p>SYNCHR TRIMIX-S4 Control Box [pdf] User Manual TRIMIX-S4, TRIMIXS4, 2AXVZ-TRIMIX-S4, 2AXVZTRIMIXS4, TRIMIX-S4, Control Box</p>
	<p>SYNCHR TRIMIX-S4 Control Box [pdf] User Manual TRIMIX-RF07, TRIMIXRF07, 2AXVZ-TRIMIX-RF07, 2AXVZTRIMIXRF07, TRIMIX-S4, Control Box</p>