

SYMMONS SLC9612PP 4 Centerset Faucet with Push Pop Faucet Instruction Manual

Contents

1 Origins®

1.1 SLC9612PP Two Handle Centerset Lavatory Faucet Operation & Maintenance Manual

1.1.1 Model Numbers

1.1.2 Compliance

1.1.3 Feature Highlights

1.1.4 Warranty

1.1.5 Dimensions

1.1.5.1 Measurements

1.1.6 Parts Breakdown

1.1.6.1 Replacement Parts

1.1.6.2 Tools Required

1.1.7 Installation

1.1.8 Maintenance

1.1.8.1 Troubleshooting Chart

2 Documents / Resources

2.1 References

3 Related Posts



SYMMONS®

Origins®



SLC9612PP Two Handle Centerset Lavatory Faucet Operation & Maintenance Manual

Model Numbers



SLC9612PP Two handle centerset lavatory faucet with A Push Pop Drain Assembly

Compliance

- ASME A112.18.1/CSA B125.1
- NSF/ANSI/CAN 61: Q<1, NSF/ANSI 372
- Water Sense 1.0 gpm (3.8 L/min)



Certified by IAPMO R&T



WARNING: This product can expose you to chemicals including lead, which is known to the state of California to cause cancer, birth defects, or other reproductive harm. For more information, go to www.P65Warnings.ca.gov.

Feature Highlights

- 4" mount
- Quarter turn ceramic cartridges
- 1/2" IPS inlet connections
- 1.0 gpm (3.8 L/min) standard flow rate
- Components shall be metal and nonmetallic construction
- Plated in standard polished chrome finish

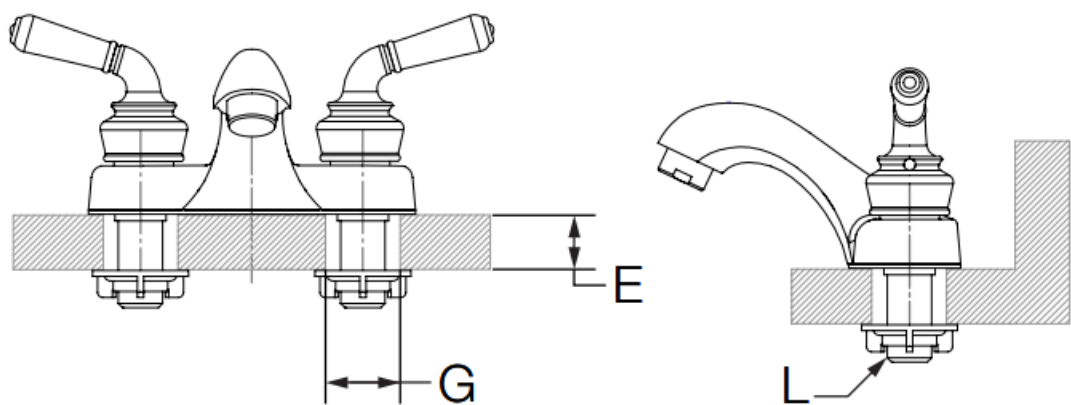
Warranty

Limited Lifetime – to the original end purchaser in consumer/residential installations.

10 Years – for commercial/industrial installations. Refer to www.symmons.com/warranty for complete warranty information.



Dimensions

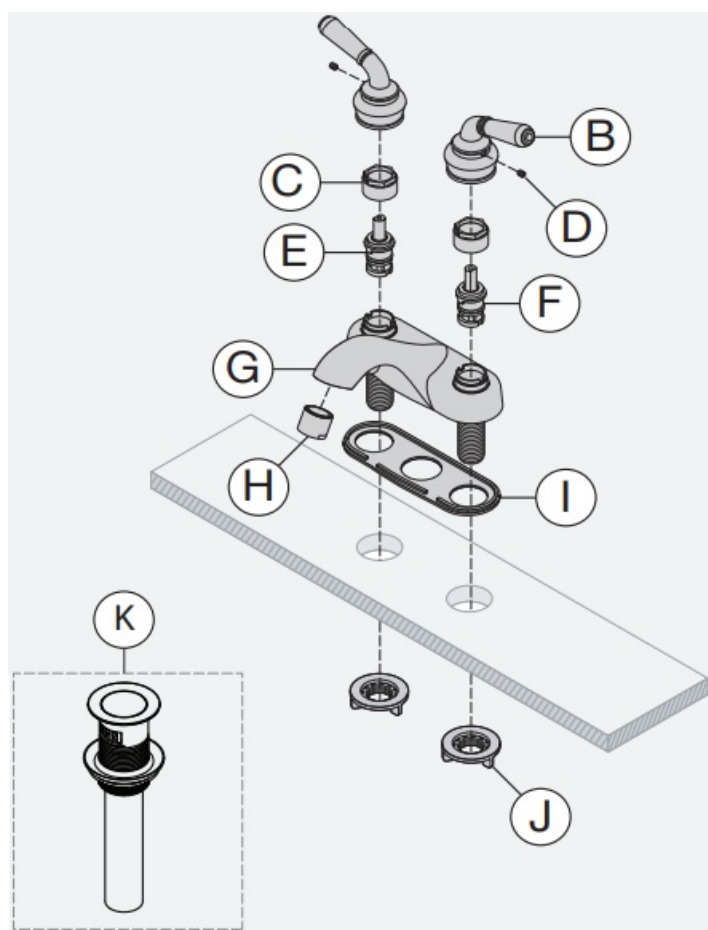


Measurements

E	Deck Thickness Ref. Max. 1-1/4", 32 mm
G	(2x) Hole Size Min. Ø 1-1/8", 29 mm Max. Ø 1-1/4", 32 mm
L	1/2-14 NPSM

Note: Dimensions subject to change without notice.

Parts Breakdown







Replacement Parts

Item	Description	Part Number
B D	(2x) Handle Kit	RL-220*
E	Hot Cartridge	RL-222H
F	Cold Cartridge	RL-222C
H	Aerator	RL-240-1.5* (1.5) RL-240-1.0* (1.0) RL-240-0.5* (0.5)
I J	Mounting Hardware	RL-221
K	Push Pop Drain Assembly	RL324*

***Note:** Append -STN to part number for Satin Nickel finish.

Tools Required

Adjustable wrench	
Allen wrench (3/32")	
Plumber putty	
Plumber tape	

Installation

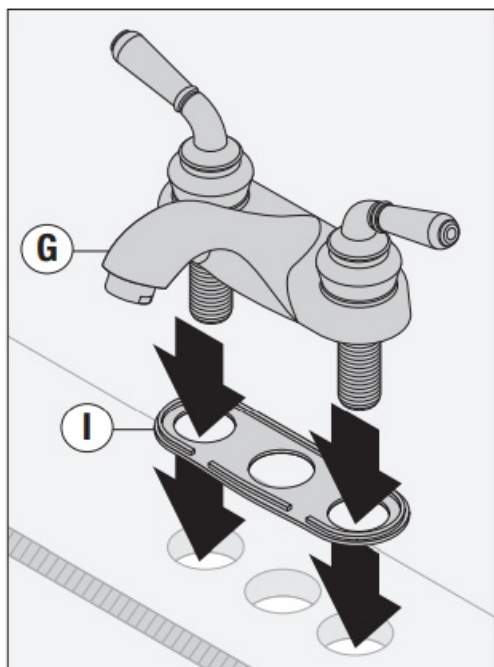


If replacing an older faucet ensure water supply is turned OFF before removing, then turn faucet control valve ON to relieve water pressure.

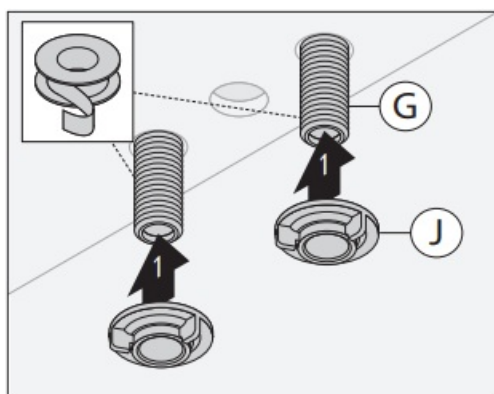


DO NOT use pipe dope or thread sealant on drain assembly, or any plastic threaded components.

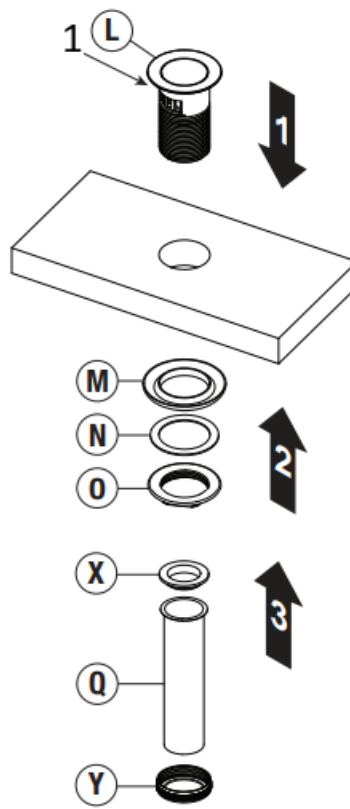
1) Insert faucet body (G) through mounting gasket (I) and sink holes.



2) Install mounting nuts (J) onto 1/2" IPS inlet connections on faucet body (G). Using a wrench, finish with one-half turn. **DO NOT** overtighten.

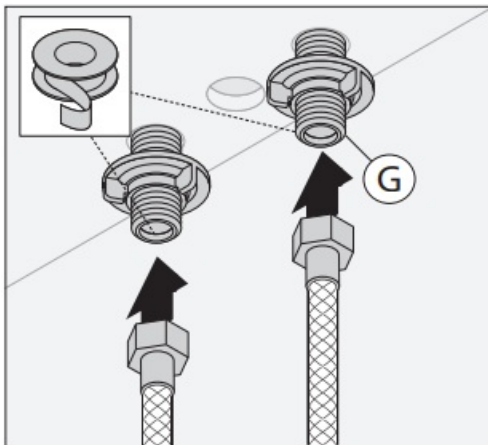


3) Push Pop Install: Insert drain body (L) into drain opening. From below, Tighten locking nut (O) with gasket (M) and washer (N) to flange. Tighten tail nut (Y) with washer (X) to secure tail pipe (Q). **DO NOT** overtighten.

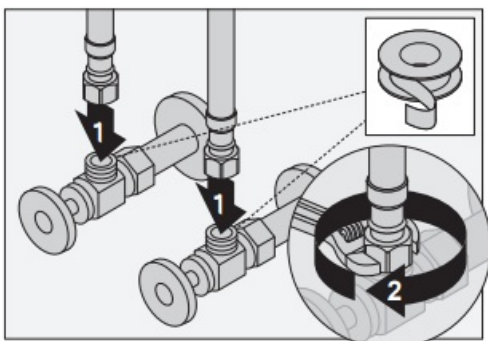


1. Plumbers Putty

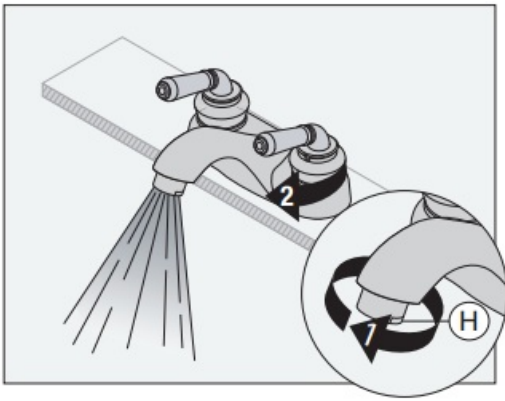
4) Attach supply lines to 1/2" IPS inlet connections on faucet body (G). Using a wrench, finish with one half turn. **DO NOT** overtighten.



5) Attach supply lines to shut-off valves and hand tighten. Using a wrench, finish with one-half turn. **DO NOT** overtighten.

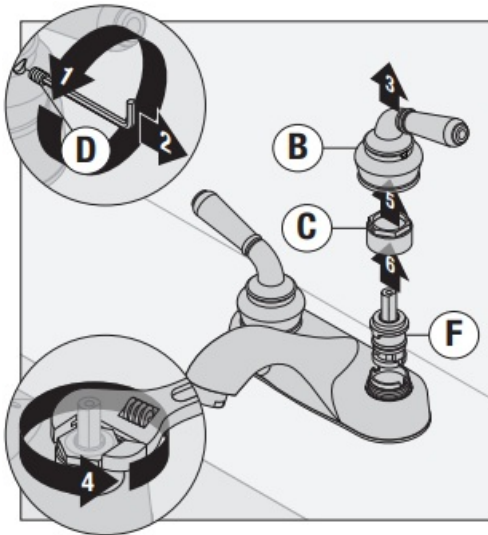


6) Remove aerator (H) and flush lines free of debris. Check for leaks.

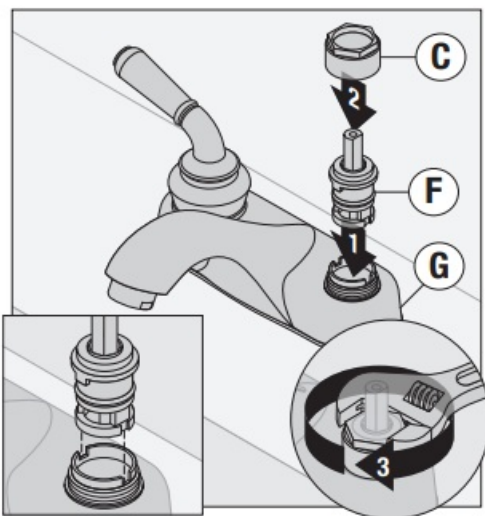


Maintenance

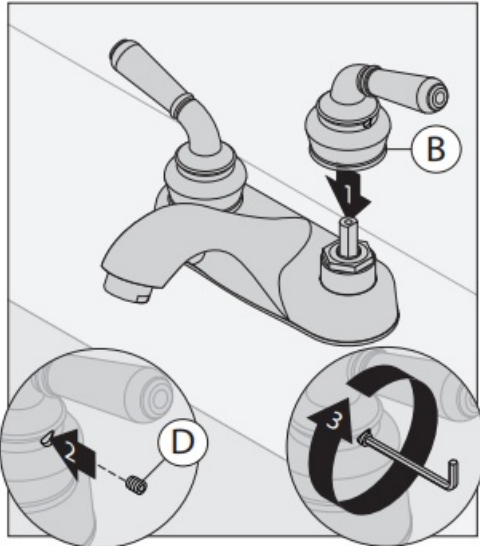
1) Turn off water. Loosen and remove handle set screw (D), handle (B), nut (C) and old cartridge (E or F).



2) Correctly align new cartridge (E or F) and insert into faucet body (G). Install and secure nut (C).



3) Replace handle (B) and reinstall set screw (D). Tighten set screw.



Troubleshooting Chart

Finish is spotting.	Elements in water supply may cause water staining on finish.	Clean finished trim area with a soft cloth using mild soap and water or a non-abrasive cleaner and then quickly rinse with water.
---------------------	--	---

Symmons Industries, Inc. • 31 Brooks Drive • Braintree, MA 02184 • Phone: (800) 796-6667 • Fax: (800) 961-9621
Copyright © 2023 Symmons Industries, Inc. • [symmons.com](https://www.symmons.com) • gethelp@symmons.com • ZV-3716 REV B • 072423

Documents / Resources

	SYMMONS SLC9612PP 4 Centerset Faucet with Push Pop Faucet [pdf] Instruction Manual SLC9612PP 4 Centerset Faucet with Push Pop Faucet, SLC9612PP, 4 Centerset Faucet with Push Pop Faucet, Faucet with Push Pop Faucet, Push Pop Faucet, Pop Faucet
--	--

References

- [Symmons | We Make Things Right](#)
- [P65Warnings.ca.gov](#)
- [Warranty Information - Symmons](#)
- [User Manual](#)

