



sylvan SL40E Smart Entry Lever Handle Latch Lock User Manual

[Home](#) » [sylvan](#) » sylvan SL40E Smart Entry Lever Handle Latch Lock User Manual

Contents [[hide](#)]

- [1 sylvan SL40E Smart Entry Lever Handle Latch Lock](#)
- [2 Special Attention](#)
- [3 Introduction](#)
- [4 Installation](#)
 - [4.1 Turn the handle](#)
- [5 Operation](#)
 - [5.1 User Management](#)
- [6 FAQ](#)
- [7 PRODUCT WARRANTY](#)
- [8 CONTACTS](#)
- [9 Documents / Resources](#)
 - [9.1 References](#)
- [10 Related Posts](#)



sylvan SL40E Smart Entry Lever Handle Latch Lock



Special Attention

1. Mechanical keys please keep outdoor, just in case keys are required to unlock door in low power conditions.
2. Please replace for the battery when low wattage alarm. (check app status)
3. Reading this manual carefully before installation, and keep it for future reference.
4. Alkaline (4 x AA) batteries MUST be used, do not use lithium batteries.

Thank you for choosing our Sylvan Smart Lock, as with all Smart Locks there are a few key tips that will ensure your Smart Lock meets your expectations.

- Good quality Alkaline batteries should always be used
- The supplied rubber boot must be installed, however smart locks are not suitable for use on a tongue and groove door, water can penetrate the lock via a groove.
- The lock must be mounted onto a flat surface and must have protection from the rain
- This lock is not suitable for the use on a gate

Introduction

Lock structure



Packing List

Check the following drawing to check whether the package contains all the parts

NO	Name	Qty		NO.	Name	Qty
1	Front Panel	1		10	Mortise Screws:M5*10mm (For Aluminum Door)	4
2	Back Panel	1		11	Mortise Screws:M4*25mm (For Wooden Door)	4
3	Mortise	1		12	60mm Square shaft	1
4	Card	3		13	80mm Square shaft	1
5	Mechanical Key	2		14	M5*25mm Screw	2
6	Waterproof Rubber Plate	2		15	M5*40mm Screw	2
7	Screw Stubs: M5*35mm	2		16	User Manual	1
8	Strike&Strike Box	1+1		17	U-Clip	1
9	Sliding Screws: M5*10mm	2		18	M3*10mm Panel screws	4

Specifications

Suitable for Models	SL40E	Doors Applicable	Aluminum door Wooden door
Materials	Aluminum alloy	Working Voltage	6V/4x AA Batteries
Lock Weight	3 KG	Door Thickness to Fit	35-65mm
Unlocking Way	Bluetooth Fingerprint(option) Password Card Mechanical key	Data Capacity	Fingerprint 200 Password 150 Card 200
	Gateway(option)		
Color	Silver Black	Working Temperature	-10 -55
Low Wattage Alarm	Less than 4.8V	Working Humidity	0-95%

System Initialization



Open the cover plate of the front panel, press and hold the “Reset” button on the back panel for 5s, press “000#”, and the initialization is complete.

Electronic Locking Button



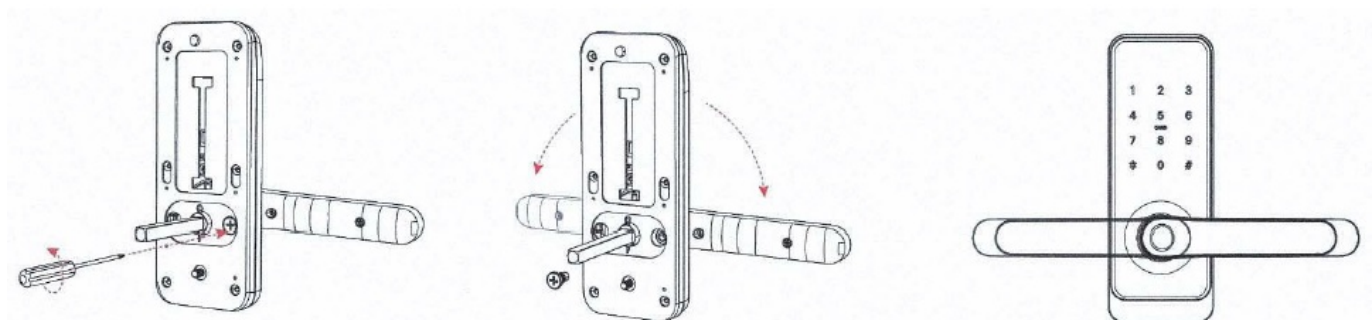
1. If you want to have the Electronic Locking function, first turn on “privacy lock” on the app
2. When the button is in the red state, it is in the locked state and can only be unlocked through the administrator app or mechanical key.

Installation

Turn the handle

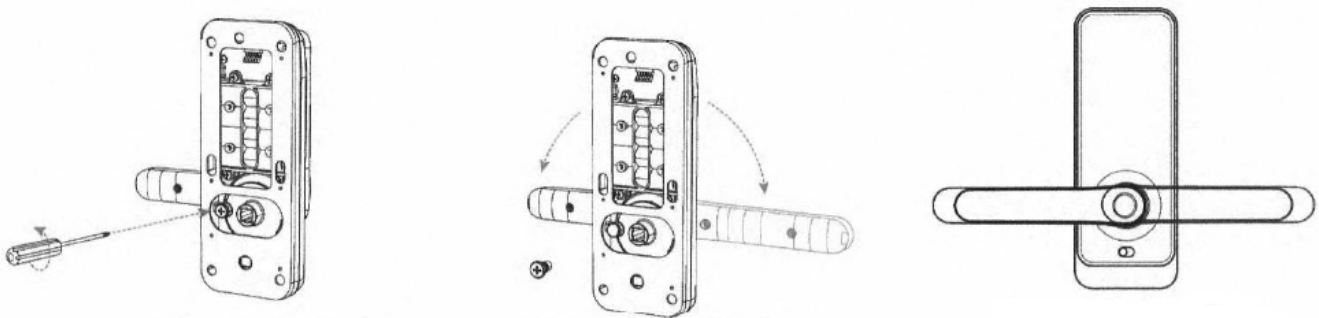
Notice: Adjust the handle according to the direction you open the door.

For Front Panel



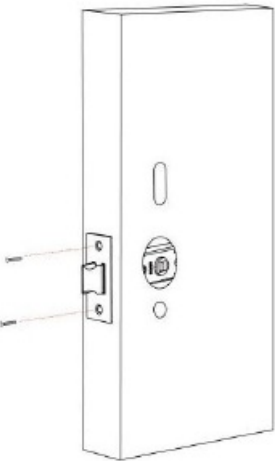
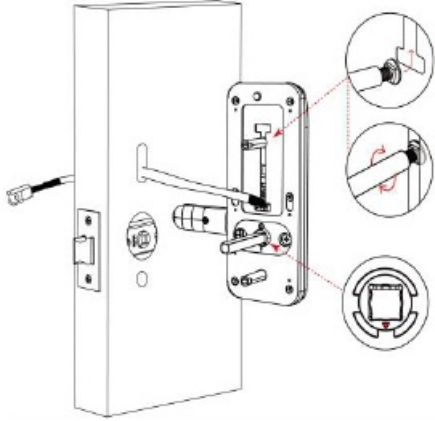
1. Loose Screws
2. Left Open the Handle Toward the Left; Right Open the Handle Toward the Right.
3. Reinstall the Screw After Adjusting the Direction.

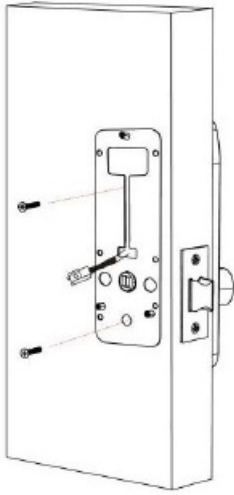



For Back Panel



1. Loosen screws
2. Left Open the Handle Toward the Left; Right Open the Handle Toward the Right.
3. Reinstall the Screw After Adjusting the Direction.

Installation Diagram(For Latch)

Step 1 Install Mortise	Step 2 Install Sliding Screw Casing
	<ol style="list-style-type: none"> 1. The screw casing place is adjustable from 55mm to 100mm far from the square shaft. Depending on the location of the hole drilling or the old door hole. 1. IMPORTANT 2. The arrow is always pointing down 

<p>Step 3 Install back gasket</p> 	<p>Step 4 Install Back Panel and link</p> 
<p>Step 5 Install battery and back cover</p> 	<p>Step 6 installation complete</p> 

Operation

Registration

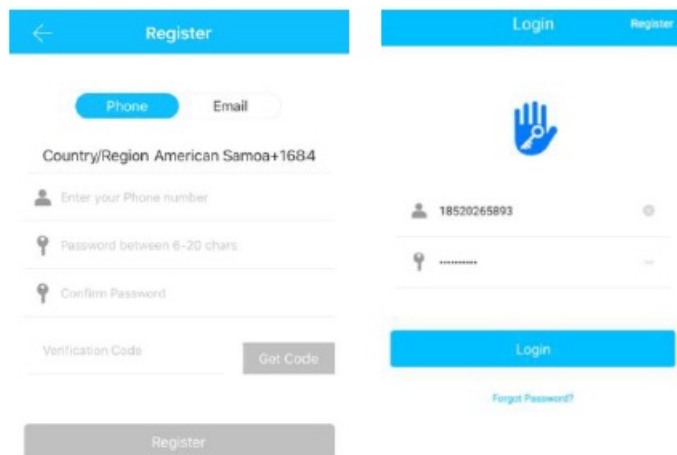
SEARCH:
"TTLock" in your
smartphone app store
to download software

The software (iOS version) can be downloaded from the app store, and the Android version can be downloaded from the application store of Google play, Yingyongbao, Baidu, Ali, 360, Huawei, and Xiaomi.

Connect lock to the phone

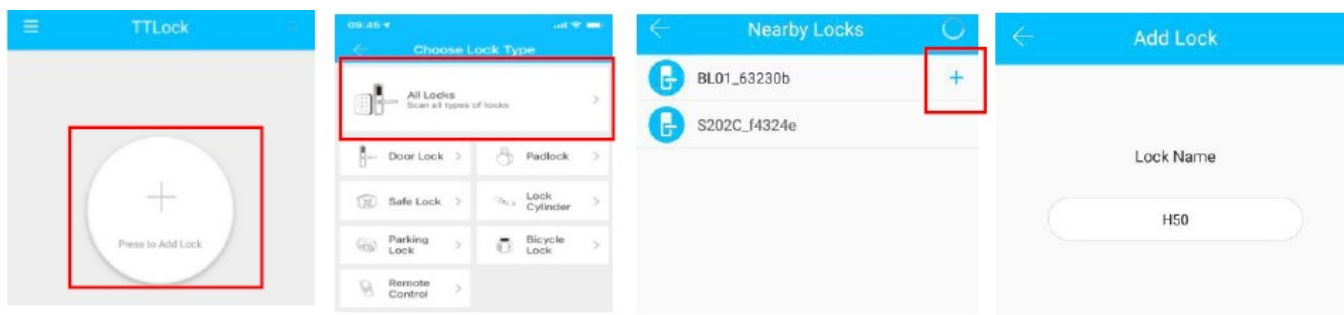
1. please scan the QR code to download the app

2. You can also search for TTLock in the APP store(Google Play)to download
3. Register a new account (phone number or email) or login with an existing account.
4. Touch the lock screen to light, click "+ Add Lock"
5. The lock nearby will appear on the phone screen, Click "+"
6. Re-name the lock
7. The lock added successfully



TT Lock users can register the account by mobile phone and Email which currently support 200 countries and regions on the world. The verification code will be sent to user's mobile phone or email, and the registration will be successful after the verification.

Add locks




TTLock supports multiple types of lock devices. The lock needs to be added by the app after entering the add mode. Generally, a lock that has not been added, as long as the lock keyboard is touched, it will enter the add mode. The default password is 123456 if not added by the phone.

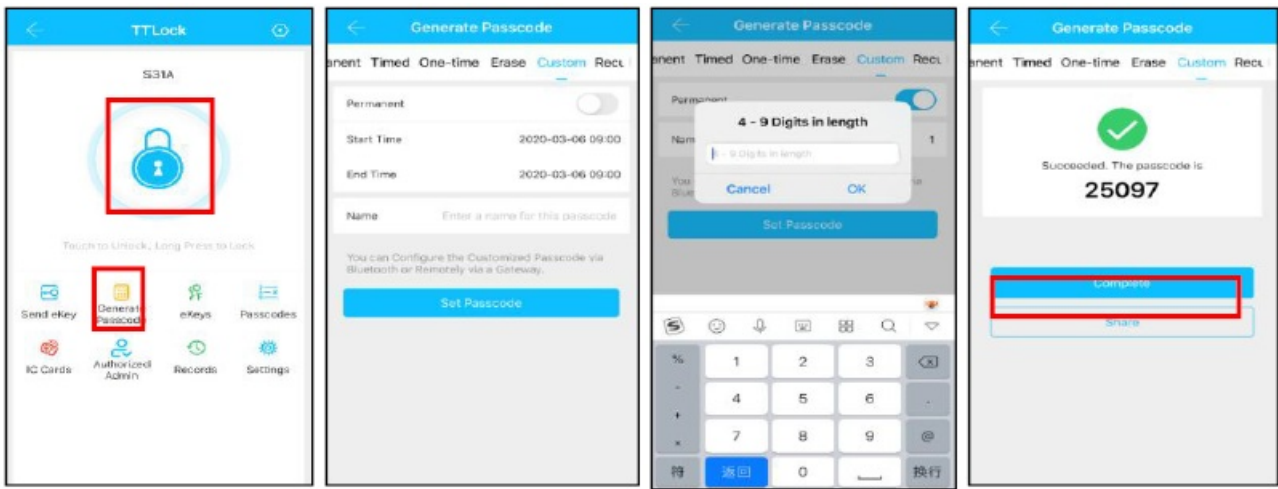
User Management

Bluetooth management

- Make sure there is no problem with Bluetooth communication. After connecting the phone to the door lock as

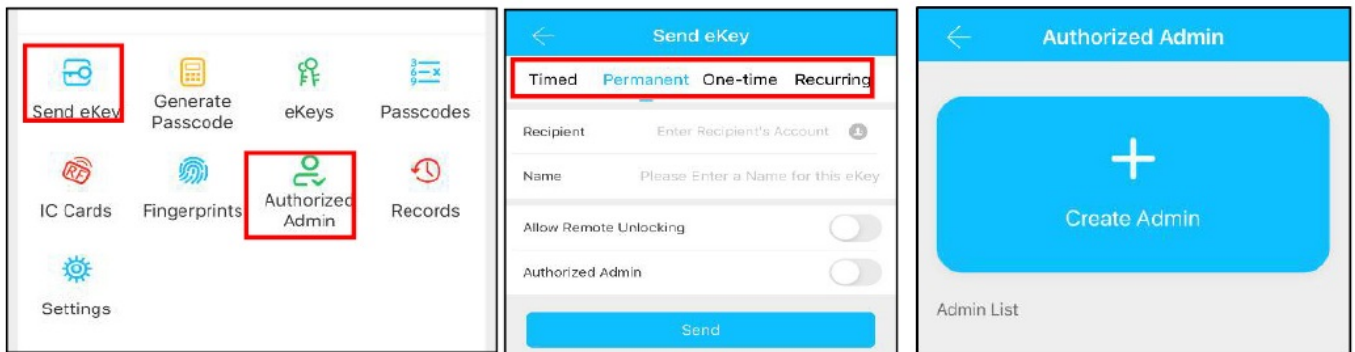
above, Click  "to unlock.(the phone is within 5 meters from the door lock)

Setting Passcode



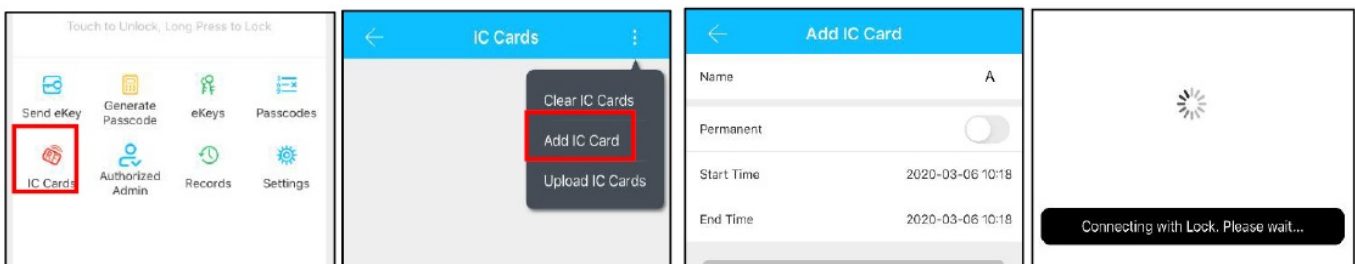
Passcodes are also a way to unlock. After entering the passcode on the locked keyboard, press the unlock button in the lower right corner to unlock. Passcodes are divided into permanent, time-limited, single, clear, cycle, and custom. (You can share the Passcode to other user via WeChat SMS Email Messenger WhatsApp)

Send e-Key



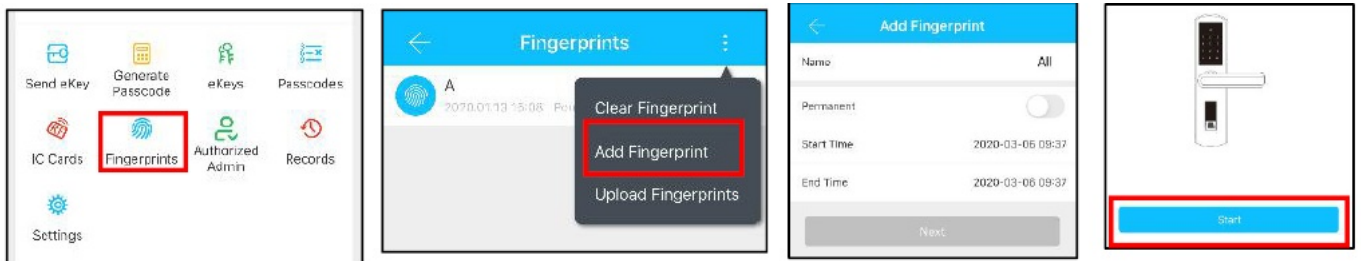
Click on the "Send eKey" as shown in figure, you can send the eKey to other users of TT Lock to authorize the unlock(the receiver must download the APP and set up an account) Select e-key format (Timed, permanent, One-time, Recurring) Enter the recipient's account of TTlock, set the name and effective time of the eKey, Can choose to allow remote unlocking or disallowing, authorized administrator or not authorized, as shown in figure Send The recipient's account has Bluetooth unlock permission.

Add card



Supports opening doors through various IC cards. Before an IC card is used to open the door, it needs to be added first. The adding process needs to be performed by the app beside the lock. The validity period of the IC can be set, it can be permanent, or it can be limited in time.

Add fingerprint



The premise that a fingerprint can be used to open a door is that it needs to be added first. The adding process needs to be performed by the APP beside the lock. The fingerprint expiration data can be set, it can be permanent, or it can be limited. After setting ,you can modify its validity period.

e-Key management



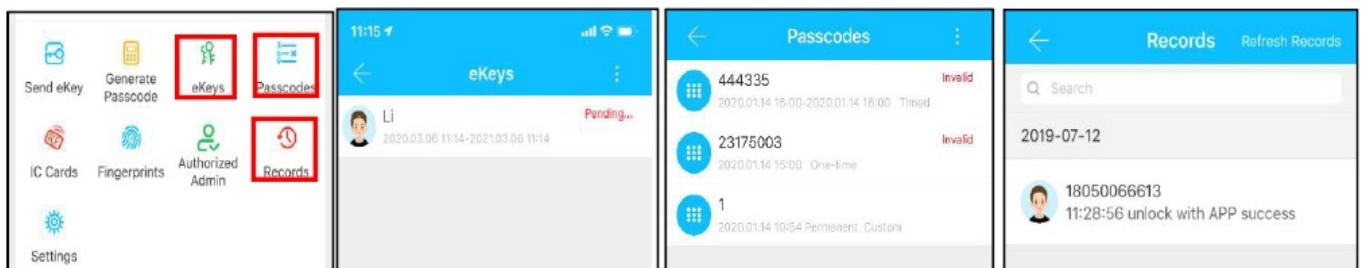
- Click “ eKeys “ The manager can delete ekey, reset ekey, send and adjust the ekey, meanwhile he can search the lock record.

Passcode management



Click “ Passcodes “.All generated passwords can be viewed and managed in the password management module. This includes a password change, password deletion, password reset, and password unlock of the record.

Unlock records



- Click ” Records “you can query your unlock record as shown in figure.

Gateway management(Optional)

The TT lock is directly connected via Bluetooth, that is why it is not attacked by the network. The gateway is a bridge between smart locks and home WIFI networks. Through the gateway, the user can remotely view and calibrate the lock clock, read the unlock record. Meanwhile, it can remotely delete and modify the password.

Add Gateway

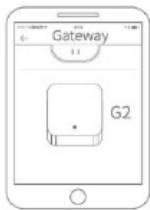
Light Status



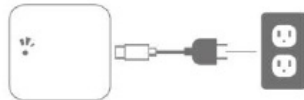
When the gateway is powered on:

- Light flashes alternately in red and blue: Stand-by mode, ready for pairing
- Blue light: Working mode
- Red light: Network failure

4. Select [G2]



5. Plug in the gateway and power it on, while the light flashes alternately in red and blue

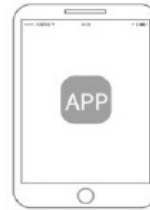


6. Press “+” sign



Pair the Gateway with APP

1. Activate the APP



2. Press “☰”



3. Select [Gateway]



7. Add Gateway



8. Select the network and fill in the password



9. Add complete

Notice: If times out, please power off and try it again.

Manual

After a short period of time, you can see which locks are in their coverage in the app. Once the lock is bound to the gateway, the lock can be managed through the gateway.

FAQ

<p>1. How to read operation records?</p>	<p>In the Records of the main interface.</p>
<p>1. Why can't I unlock it after open the passage mode</p>	<p>You need to perform an unlock verification in any method, than the passage mode will take effect.</p>

<p>1. What is the purpose of Auto Lock</p>	<p>You can set how long to lock after unlocking</p>
<p>1. After installation, touch sensing keyboard, screen no respond</p> <p>Alkaline batteries must be used.</p> <p>Do not use Lithium Batteries.</p>	<ul style="list-style-type: none"> • In this case, first check that the positive and negative terminals of the battery have been installed upside down, and whether the battery has enough power • Remove the back panel and see if it's connected. • To eliminate the above situation, you need to remove the lock, check whether the wires of the lock body are squeezed, and re-wire.
<p>1. Unable to register fingerprint</p>	<p>Check the fingers for dirt or wear, check the fingerprint head on the lock for dirt and oil stains, etc.</p> <p>Check to see if the fingerprint is working properly Press to see if there is any responses.</p>
<p>1. What is the reason why the smart lock consumes fast power?</p>	<ul style="list-style-type: none"> • Large standby power consumption • Short circuit
<p>1. There is no response to pressing the handle on outside the door, and there is unlock normally on inside the door, but the verification is normal, and the motor is normal.</p>	<p>It may be the triangle direction on the clutch was error, please check the correction.</p>
<p>1. How many times will the password be locked? How long is it locked?</p>	<p>Enter the wrong password more than 5 times in a row, the keyboard is locked for 5 minutes Other ways to can open the door</p>

PRODUCT WARRANTY

- **Customer Name:**
- **Customer Phone:**
- **Purchase Date:**
- **Store Name:**
- **Receipt #:**
- **Product Name:**
- **Product Model:**


Note

1. Please keep this card so that you can use it when you need warranty service.
2. We provide you with a two-year warranty from the date of purchase.

CONTACTS

- 127 Diana Drive Glenfield Auckland 0627
- **Ph:** +64 9 444 5359
- **Email:** sales@gdrutter.co.nz
- **Web:** www.sylvan.co.nz

Documents / Resources

 <p>sylvan User Manual SL40E</p> <p>Special Attention! Please read the user manual carefully before using the product. The user manual contains important information about the product's operation and safety. It is your responsibility to read and understand the user manual before using the product. If you have any questions, please contact our customer support team.</p>	<p>sylvan SL40E Smart Entry Lever Handle Latch Lock [pdf] User Manual SL40E Smart Entry Lever Handle Latch Lock, SL40E, Smart Entry Lever Handle Latch Lock, E ntry Lever Handle Latch Lock, Lever Handle Latch Lock, Handle Latch Lock, Latch Lock, Lock</p>
--	---

References

-  [Sylvan Architectural Hardware](#)