

sygonix®  
**3048935Touchless Sensor Switch**



## Sygonix 3048935Touchless Sensor Switch Instruction Manual

[Home](#) » [Sygonix](#) » Sygonix 3048935Touchless Sensor Switch Instruction Manual 

### Contents

- 1 Sygonix 3048935Touchless Sensor Switch
- 2 Product Information
- 3 Product Usage Instructions
- 4 Operating Instructions for download
- 5 Intended use
- 6 Delivery contents
- 7 Description of symbols
- 8 Safety instructions
- 9 Installation
- 10 Cleaning and care
- 11 Disposal
- 12 General
- 13 Documents / Resources
  - 13.1 References

sygonix®

**Sygonix 3048935Touchless Sensor Switch**



## Product Information

### Specifications

- Model: Touchless Sensor Switch, IR
- Available Sizes:
  - Item no: 3048935 (40 x 115 x 23 mm)
  - Item no: 3048936 (70 x 115 x 21.5 mm)
  - Item no: 3048937 (86 x 86 x 20.5 mm)
- Features:
  - Contactless infrared (IR) sensor switch activated with a wave of hand
  - Two-color LED sensor status lights
  - Contact outputs: Normally open (NO), Normally Closed (NC), Common (COM)
- Intended Use: Indoor use only

### Product Usage Instructions

#### Operating Instructions Download

Visit [www.conrad.com/downloads](http://www.conrad.com/downloads) or scan the QR code to download the complete operating instructions or any new/current versions available. Follow the instructions on the web page.

#### Intended Use

The product is designed as a non-contact switch for various applications such as garage doors, building access, offices, and food preparation areas. Avoid outdoor use and contact with moisture to prevent damage.

## Delivery Contents

- Non-contact panel
- Mounting box
- 4x mounting box screws
- 4x dowels
- 2x panel screws (torx head)
- 1x Torx driver
- 4x Torx screw head stickers (2x spare)
- Operating instructions

## Frequently Asked Questions (FAQ)

### • Q: Can this product be used outdoors?

A: No, the product is intended for indoor use only. Outdoor use may lead to damage.



## Operating Instructions for download

Use the link [www.conrad.com/downloads](http://www.conrad.com/downloads) (alternatively scan the QR code) to download the complete operating instructions (or new/current versions if available). Follow the instructions on the web page.

## Intended use

The product is a non-contact switch used as a trigger, making it a hygienic and convenient solution for a wide range of applications (e.g., garage doors, building access, offices, food preparation areas etc.). Some features include:



- Contactless infrared (IR) sensor switch activated with wave of hand.
- Two colour LED sensor status lights.
- Contact outputs: Normally open (NO), Normally Closed (NC), Common (COM).

The product is intended for indoor use only. Do not use it outdoors. Contact with moisture must be avoided under all circumstances. If you use the product for purposes other than those described, the product may be damaged. Improper use can result in short circuits, fires, or other hazards. The product complies with the statutory national and European requirements. For safety and approval purposes, you must not rebuild and/or modify the product. Read the operating instructions carefully and store them in a safe place. Make this product available to third parties only together with the operating instructions. All company names and product names are trademarks of their respective owners. All rights reserved.

## Delivery contents

- Non-contact panel
- Mounting box
- 4x mounting box screws
- 4x dowels
- 2x panel screws (torx head)
- 1x Torx driver
- 4x Torx screw head stickers (2x spare)
- Operating instructions

## Description of symbols

-  The symbol warns of hazards that can lead to personal injury.
-  The symbol warns of dangerous voltage that can lead to personal injury by electric shock.

## Safety instructions

Read the operating instructions carefully and especially observe the safety information. If you do not follow the safety instructions and information on proper handling, we assume no liability for any resulting personal injury or damage to property. Such cases will invalidate the warranty/guarantee.

- **General**
  - The product is not a toy. Keep it out of the reach of children and pets.
  - Do not leave packaging material lying around carelessly. This may become dangerous playing material for children.
  - If you have questions which remain unanswered by this information product, contact our technical support service or other technical personnel.
  - Maintenance, modifications and repairs must only be completed by a technician or an authorised repair centre.
- **Handling**
  - Handle the product carefully. Jolts, impacts or a fall even from a low height can damage the product.
- **Operating environment**
  - Do not place the product under any mechanical stress.
  - Protect the appliance from extreme temperatures, strong jolts, flammable gases, steam and solvents.
  - Protect the product from high humidity and moisture.
  - Protect the product from direct sunlight.
- **Operation**
  - Consult an expert when in doubt about the operation, safety or connection of the product.
  - If it is no longer possible to operate the product safely, take it out of operation and protect it from any accidental use. DO NOT attempt to repair the product yourself. Safe operation can no longer be guaranteed if the product:
    - is visibly damaged,
    - is no longer working properly,

- has been stored for extended periods in poor ambient conditions or
- has been subjected to any serious transport-related stresses.

#### • Drilling

When penetrating the surface (example: drilling or inserting fasteners), make sure no cables or pipes are damaged. Inadvertently penetrating electric cables causes the life-threatening danger of an electric shock! Check for concealed wires and pipes before drilling or inserting fasteners.

#### • Installation or maintenance

**WARNING** Risk of electric shock!

Switch the power OFF and/or disconnect the power supply at the circuit breaker before installation or maintenance. Always ensure that electrical work is carried out by a qualified electrician and in accordance with local regulations and standards.

## Installation

### Important:

- Do not connect the product directly to the mains power supply.
- Use only with a 12 V/DC or 24 V/DC power source.
- Mount the product using the included electrical back box or directly to a wall using a single-gang surface or flush-mounted electrical box.

## Connection

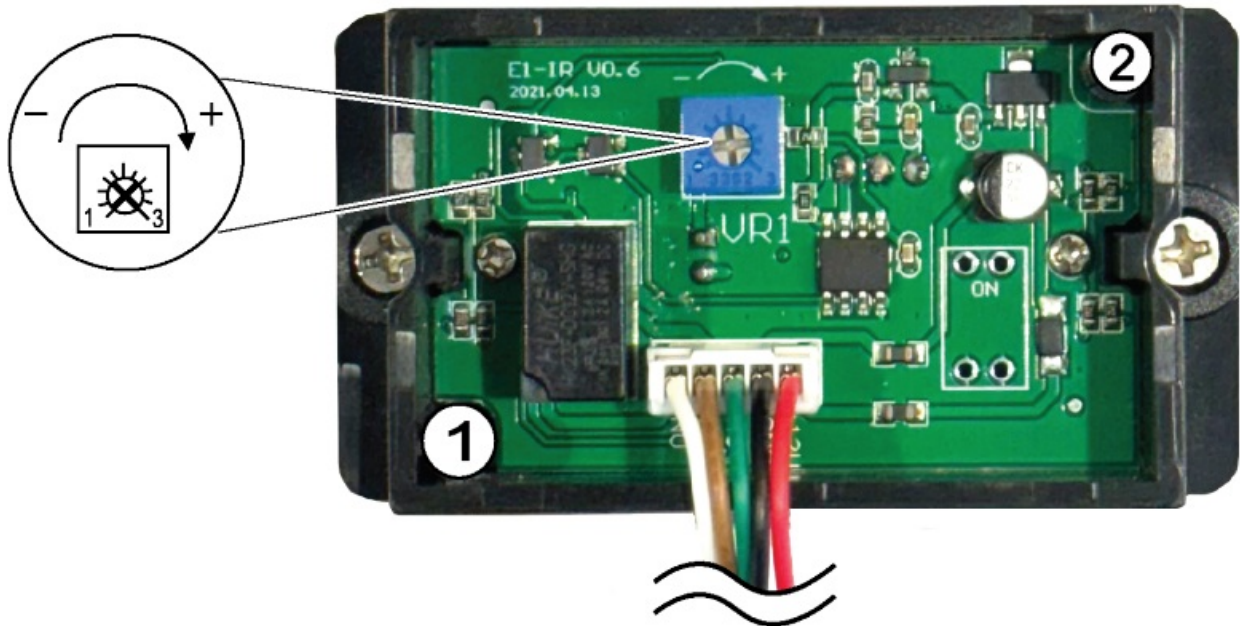
1. Connect the wires. See section: Wiring [ ] 1].
2. Mount the stainless steel faceplate onto the back box using the supplied screws.
3. Apply 12 or 24 V/DC power to the product.  
The LED indicator will light blue (standby).
4. Test for proper activation by placing a hand near the sensor.  
The LED indicator will change to green (activated).
5. (If required) adjust the sensor read range. See section: Read range adjustment [ ] 1]

## Wiring

Wire colour	Function	Notes
Red	Power +	10-24 V/DC
Black	GND	Ground
Green	NC	Normally closed
Brown	COM	Common
White	NO	Normally open

## Read range adjustment

- The sensing distance can be adjusted to optimize the trigger response.
- Remove the cover screws (1, 2) and adjust the sensor as shown.



## Cleaning and care

### Important:

- Do not use aggressive cleaning agents, rubbing alcohol or other chemical solutions.  
They damage the housing and can cause the product to malfunction.
- Do not immerse the product in water.

1. Clean the product with a dry, fibre-free cloth.

## Disposal

This symbol must appear on any electrical and electronic equipment placed on the EU market. This symbol indicates that this device should not be disposed of as unsorted municipal waste at the end of its service life. Owners of WEEE (Waste from Electrical and Electronic Equipment) shall dispose of it separately from unsorted municipal waste. Spent batteries and accumulators, which are not enclosed by the WEEE, as well as lamps that can be removed from the WEEE in a non-destructive manner, must be removed by end users from the WEEE in a non-destructive manner before it is handed over to a collection point. Distributors of electrical and electronic equipment are legally obliged to provide free takeback of waste. Conrad provides the following return options free of charge (more details on our website):

- in our Conrad offices
- at the Conrad collection points
- at the collection points of public waste management authorities or the collection points set up by manufacturers or distributors within the meaning of the ElektroG

End users are responsible for deleting personal data from the WEEE to be disposed of. It should be noted that different obligations about the return or recycling of WEEE may apply in countries outside of Germany.

## General

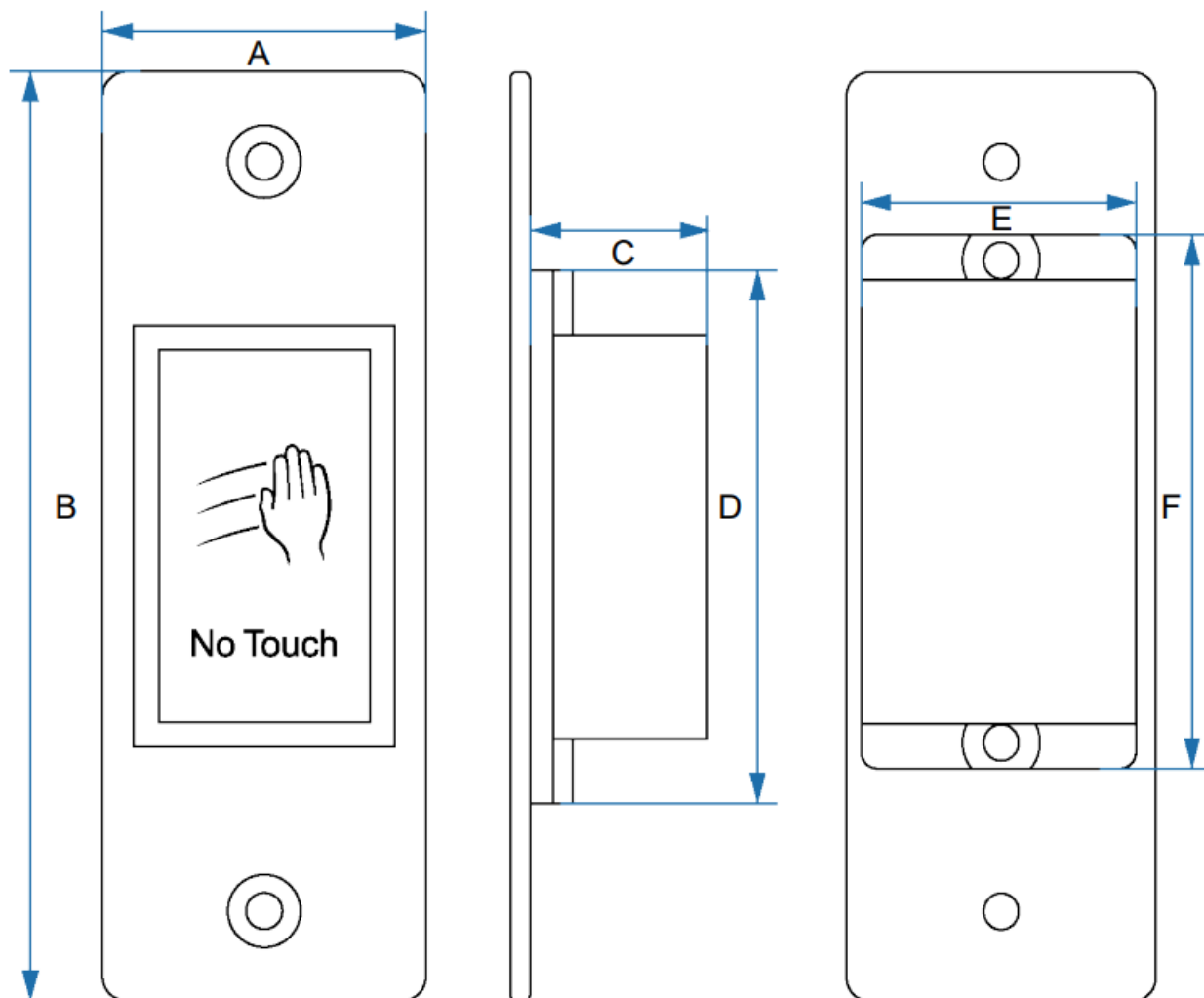
## Technical data

- Rated input ..... 12 – 24 V/DC
- Power consumption..... 12 V/DC 10 mA standby, 24 mA active 24 V/DC 10 mA standby, 24 mA active
- LED colour..... Standby: blue Active: green
- Sensor range..... 3 -15 cm (adjustable)
- Contact outputs ..... Normally open (NO), Normally Closed (NC), Common (COM)
- Response time..... 10 ms
- Sensor type ..... active infrared, 940 nm
- Housing material..... Stainless steel (SUS304)
- Operating / storage conditions..... -20 to +60 °C, 10 – 80 % RH (non-condensing)
- Weight (approx.) .....
  - Item No.: 3048935: 127 g
  - Item No.: 3048936: 130 g
  - Item No.: 3048937: 130 g

## Dimensions


	Item No.: 3048935	Item No.: 3048936	Item No.: 3048937
A	40 mm	70 mm	86 mm
B	115 mm	115 mm	86 mm
C	23 mm	21.5 mm	20.5 mm
D	66 mm	84.5 mm	65.5 mm
E	35.5 mm	63 mm	66.8 mm
F	66 mm	84.5 mm	65.5 mm

**Note:** The following image is for reference only. The size and shape of each model is different.



This is a publication by Conrad Electronic SE, Klaus-Conrad-Str. 1, D-92240 Hirschau ([www.conrad.com](http://www.conrad.com)). All rights including translation reserved. Reproduction by any method (e.g. photocopying, microfilming or the capture in electronic data processing systems) requires prior written approval from the editor. Reprinting, also in part, is prohibited. This publication reflects the technical status at the time of printing. Copyright by Conrad Electronic SE.

## Documents / Resources

	<p><a href="#">Sygonix 3048935 Touchless Sensor Switch</a> [pdf] Instruction Manual 3048935 Touchless Sensor Switch, 3048935, Touchless Sensor Switch, Sensor Switch, Switch</p>
---	--

## References

- [Conrad Electronic » All parts of success](#)
- [Download center](#)
- [User Manual](#)