



sygonix 2525291 Wi-Fi Door Intercom with Door Viewer Instruction Manual

[Home](#) » [Sygonix](#) » sygonix 2525291 Wi-Fi Door Intercom with Door Viewer Instruction Manual 

Contents

- [1 sygonix 2525291 Wi-Fi Door Intercom with Door Viewer](#)
- [2 Intended use](#)
- [3 Delivery content](#)
- [4 Safety information](#)
- [5 Product Overview](#)
- [6 Installation](#)
- [7 Getting started/operation](#)
- [8 Configuring and using the app](#)
- [9 Operation in the app](#)
- [10 Cleaning and care](#)
- [11 Technical data](#)
- [12 Documents / Resources](#)
 - [12.1 References](#)
- [13 Related Posts](#)

sygonix®

sygonix 2525291 Wi-Fi Door Intercom with Door Viewer



Intended use

The product is designed for access monitoring, e.g. in private living quarters. It can be used as a door viewer or instead of your existing peephole. Using the door viewer camera, you can see on the display of the indoor unit who is standing in front of your door. The product can be connected to your smartphone and the app to enable an intercom function via the built-in microphone and loudspeaker. The door viewer also features a call button that triggers a ring signal on the indoor unit when pressed. The call is also automatically redirected to your smartphone. An integrated IR LED, which is automatically controlled via the built-in light sensor, enables door viewer operation in darkness. An integrated motion detection functionality is also available.

The “Smart Life – Smart Living” app serves for configuration and enables one to perform all other functions. You cannot operate the product when not connected to the app. The app can be installed on a smartphone or tablet running Android™ or Apple iOS. A free account is required to use the app. It must be created during the initial app setup. The configuration serves for integrating the product into your existing Wi-Fi network. The product is powered by a built-in rechargeable battery. The battery can be charged via the micro USB port of the indoor unit. The product is intended for indoor use only. Do not use it outdoors. Contact with moisture must be avoided under all circumstances.

Using the product for purposes other than those described above may damage the product. Improper product use can cause a short circuit, fire, electric shock, and other hazards. This product complies with statutory, national, and European regulations. For safety and approval purposes, you must not rebuild and/or modify the product. Read the instructions carefully and store them in a safe place. Always provide these operating instructions when giving the product to a third party. All company and product names contained herein are trademarks of their respective owners. All rights reserved.

Android™ is a registered trademark of Google LLC.

Delivery content

- Display/indoor unit
- Door viewer/camera
- Micro USB cable
- Reset pin
- Installation material
- Operating instructions

Latest product information

Download the latest product information at www.conrad.com/downloads or scan the QR code shown. Follow the instructions on the website.

Explanation of symbols

The following symbols appear on the product/device or in the text:

This symbol warns of hazards that can lead to personal injury. Read the information carefully.

Safety information

Read the operating instructions carefully and especially observe the safety information. If you do not follow the safety instructions and information on proper handling, we assume no liability for any resulting personal injury or damage to property. Such cases will invalidate the warranty/guarantee.

General information

- This product is not a toy. Keep it out of the reach of children and pets.
- Do not leave packaging material lying around carelessly. It may become a dangerous plaything for children.
- Should you have any questions or concerns after reading this document, please contact our technical support or a professional technician.

Handling

- Please handle the product carefully. Impact, shocks or a fall even from a low height can damage the product.

Operating conditions

- Do not expose the product to any mechanical stress.
 - Protect the product from extreme temperatures, strong jolts, flammable gases, vapors, and solvents.
 - Protect the product from high humidity and moisture.
 - The product must not be exposed to direct sunlight.
 - Avoid operation near strong magnetic or electromagnetic fields, transmitter aerials, or HF generators.
- Otherwise, the product may not function properly.

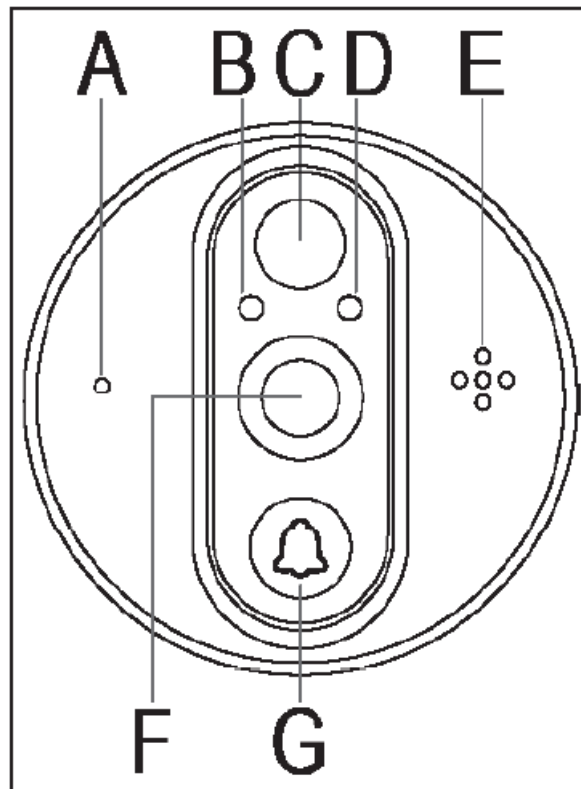
Li-ion battery

- The rechargeable battery is permanently built into the product and cannot be replaced.
- Never damage the battery. Damaging the casing of the rechargeable battery might cause an explosion or a fire!
- Never short-circuit the contacts/connections of the rechargeable battery. Do not throw the battery or the product into fire. There is a danger of fire and explosion!
- Charge the rechargeable battery regularly, even if you are not using the product. The rechargeable battery is designed so that it does not need to be discharged before it can be charged.
- Never leave the product unattended during charging.
- When charging, place the product on a surface that is not heat-sensitive. Normally, a certain amount of heat is generated during charging.

Product Overview

Door viewer/camera

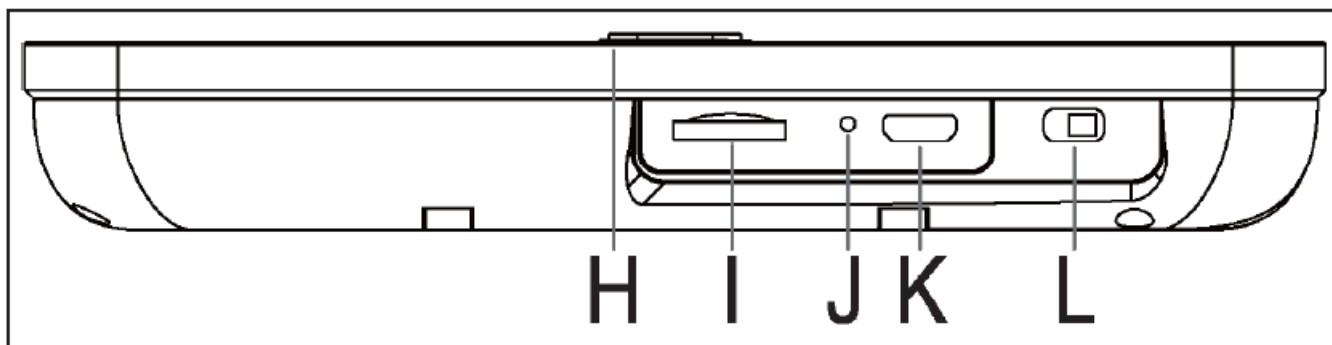
- A Microphone for the intercom function
- B Light sensor; the IR LED turns on automatically when the light level is below 2 LUX
- C PIR motion sensor for motion detection
- D IR LED for a clearer picture in darkness
- E Loudspeaker for the intercom function
- F Camera
- G Call button



Display/indoor unit

- H Home button and status LED
- I SD card slot
- J Reset button

- K Micro USB port for battery charging with an integrated status LED
- L On/off switch



Installation

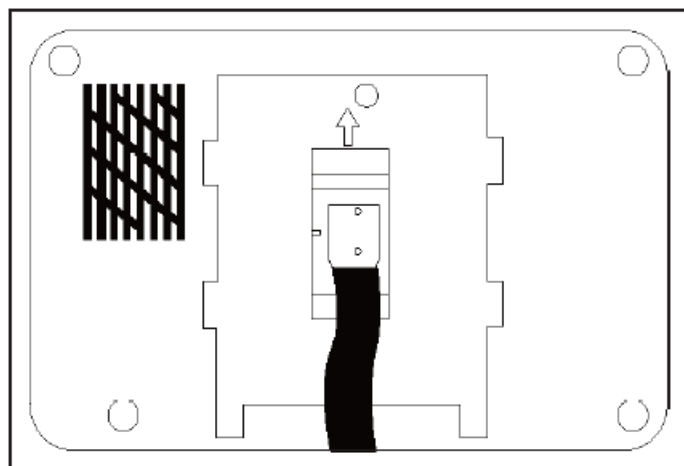
The product can serve as a door viewer on your front door. It can also be used instead of an existing peephole.

Preparation

- You should remove the existing peephole first before installing the door viewer on your front door.
- If there is no peephole on your front door, drill a hole with a diameter of 16 mm at eye level.

Installation

- First, pull off the two protective strips to expose the adhesive strips.
- Thread the connecting cable of the camera through the hole in your door from the outside.
- Then push the camera into the hole from the outside and press it down lightly. Pay attention to the correct orientation when doing so. The call button must point downwards.
- Pick up the indoor bracket and 2 of the 6 screws included in the delivery. Select the screws according to the thickness of your front door.
- Indoor bracket alignment: The two adhesive strips must face the door. The recessed square for the cable must point to the left and the two recesses for the screws to the right.
- First, pull off the two protective strips to expose the adhesive strips.
- Thread the camera cable through the recessed square of the bracket and push it into the slot in the middle of the bracket.
- Insert the screws one by one into the bracket recesses and screw them into the back of the camera. Do not attach the bracket to the door yet.
- With the screws slightly tightened, push the bracket all the way to the right so that the two screws are in the middle of the bracket.
- Attach the bracket securely to the door and tighten the two screws.
- Connect the camera cable to the back of the display. Ensure the plug is correctly aligned. See the picture on the right.
- Finally, hang the display on the bracket. Ensure the camera cable is not pinched.
- The installation is now complete.



Getting started/operation

Functions of the sliding switch/reset button/status LEDs of the indoor unit

Sliding switch/button/LED	Action	Function
Sliding switch (L)	“ON”/“OFF”	Switches the system on or off
Home button (H)	press briefly	Switches the display on or off
“RESET” button (J)	keep pressed for approx. 3 seconds	Resets the system to factory defaults; after initiation, the connection mode is enabled automatically
LED (H)	flashes blue	The indoor unit is in connection mode
LED (H)	flashes alternately red and blue	The indoor unit is connected to the app
LED (H)	flashes blue once	The call button on the door viewer has been pressed
LED (K)	glows red steadily	The indoor unit is powered via the micro USB port

Charging the indoor unit/display

To be able to use the product, you must first charge the battery.

- Connect the included micro USB cable to the display's micro USB port (K).
- Once the micro USB port is energized, the LED integrated into the micro USB port goes on and glows red steadily. When the battery is fully charged, the battery symbol appears in the app and on the display of the indoor unit.

The product battery can also be charged during operation.

Inserting the memory card

- If you want to use a memory card, insert it into the card slot. The display must be switched off while doing so. The sliding switch (L) must be in the “OFF” position.
- Slide the memory card into the slot and push it in until it clicks into place. When inserting the card, its contacts must face the back of the display.
- If you want to remove the memory card, push the card in again to eject it. Then pull it out of the slot.

Product functions

- To switch the product on, slide the switch (L) from the “OFF” position to the “ON” position. During camera initiation, the red and blue LEDs glow steadily.
- To switch the product off, slide the switch from the “ON” position to the “OFF” position.
- To make a call, the visitor must simply press the call button (G) briefly.
- Press the home button (H) briefly to turn the display on.
- To turn the display off, simply press the home button (H) again briefly. The display is deactivated automatically after a few seconds.

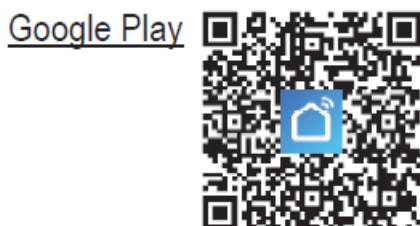
Configuring and using the app

Installing the app

- Open the respective app store on your smartphone. If you are using Android™, open “Google Play”. If you are using an Apple device, open “App Store” from Apple.
- Search for the “Smart Life – Smart Living” app (house icon with blue background) and install it.



- You can also scan the respective QR code below or tap on the name. You will be redirected to the page of the appropriate store.



Launching the app for the first time

- Open the previously installed “Smart Life – Smart Living” app.
- If you have not created a free account yet, please sign up and follow the instructions.

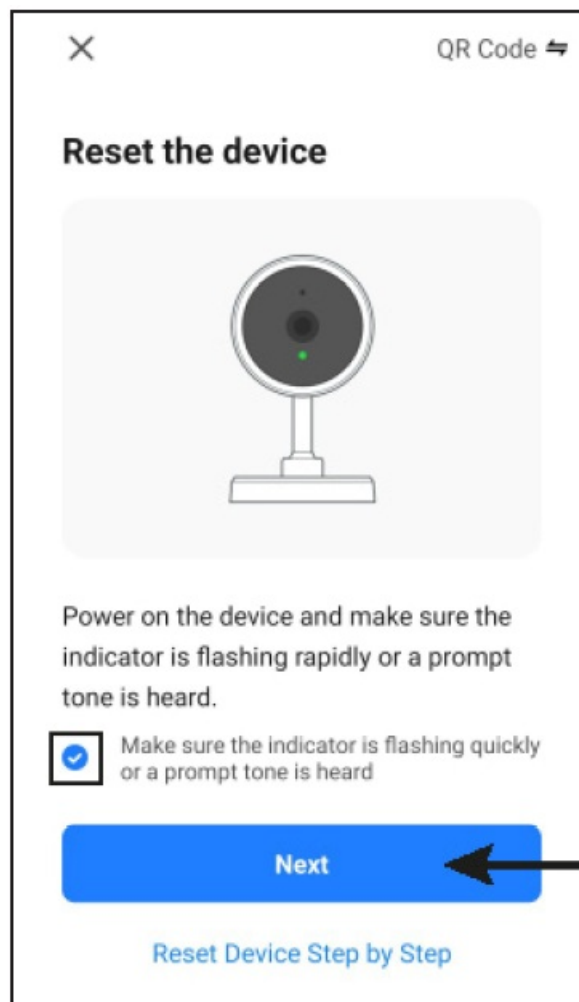
- Log in to the app using your account.
- If you are using several devices, we recommended that you create a profile for your home first. You can then create several profiles (e.g. for each room). The corresponding settings page in the app can be accessed with the button in the lower right corner.

Configuring the product

- For configuration, your smartphone and door viewer should be connected to the same Wi-Fi network.
Important: Please note that only 2.4 GHz Wi-Fi networks are supported.
- Before connecting your door intercom to the app, ensure the connection mode is enabled.
- Switch on the door intercom. Wait until a camera image appears on the display.
- Keep the “RESET” (J) pressed for approx. 3 seconds using a pointed object until you hear the “System Reset” voice alert. Then release the button.
- You will also hear alerts at certain intervals that the device is ready to be connected to the app. The home button LED now flashes blue. The display switches off automatically after approx. 5 minutes. Switch the display off and on again briefly, then the connection mode is active again.
- You can add a new device manually by tapping “+” on the top right of the app’s main page and selecting the device you want to add. Otherwise, tap the blue button below in the middle.
- You can add the door intercom to the app by selecting the eighth item for video monitoring in the left column (see the left black rectangle in the screenshot).
- Then select “Smart Doorbell” (see the right black rectangle in the screenshot). Tapping this rectangle takes you to the next configuration page.



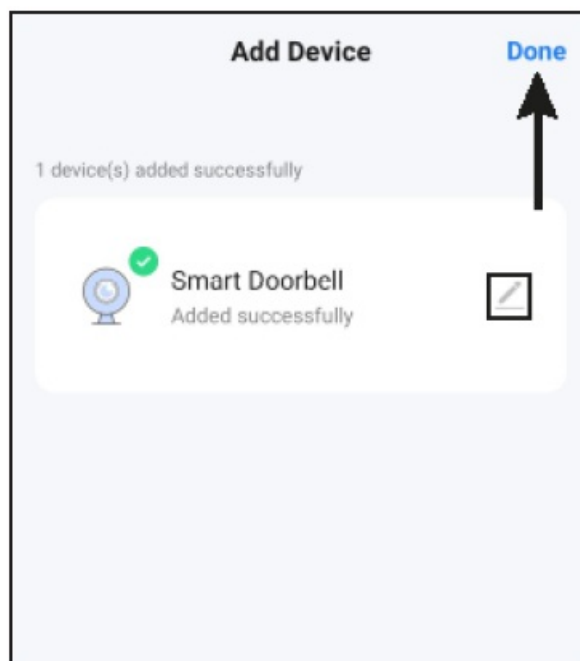
- If the display is still on and the blue LED is still flashing, check the box (small rectangle in the screenshot) for the button below to turn blue and get activated.
- Then tap the bottom blue button in the app to go to the Wi-Fi settings.
- If your Wi-Fi network has not been applied automatically, first select it (tap the double arrow on the right) and then enter the Wi-Fi password.
- Tap the blue button to save your selection and continue.



- Then a QR code will be generated and displayed on your smartphone.
- Hold your smartphone 15 to 20 cm away from the camera so that it can read the QR code.
- Keep moving the camera towards and away from your smartphone.
- Activation of the “Pairing information received” voice alert means that the QR code has been read.
- At the same time, the home button LED flashes alternately red and blue.
- Then tap the blue button to continue.
- The app will search for the new device and complete the setup. This can take several minutes.



- When setup is complete, the display should look like the right-hand screenshot. If anything went wrong, repeat the process.
- Tap the pencil icon to assign an individual name to the new device.
- Finally, tap the blue lettering at the top to complete the setup.

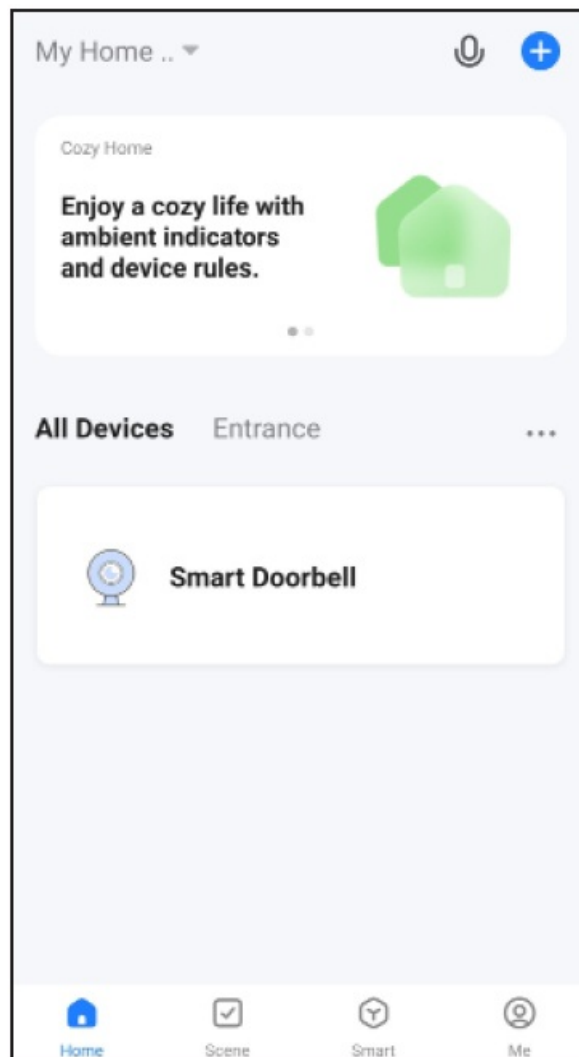


- The newly added device will be displayed on the main page (see the first screenshot in the next section).

Operation in the app

- Tapping on the device on the app's main page opens the page with functions and settings.

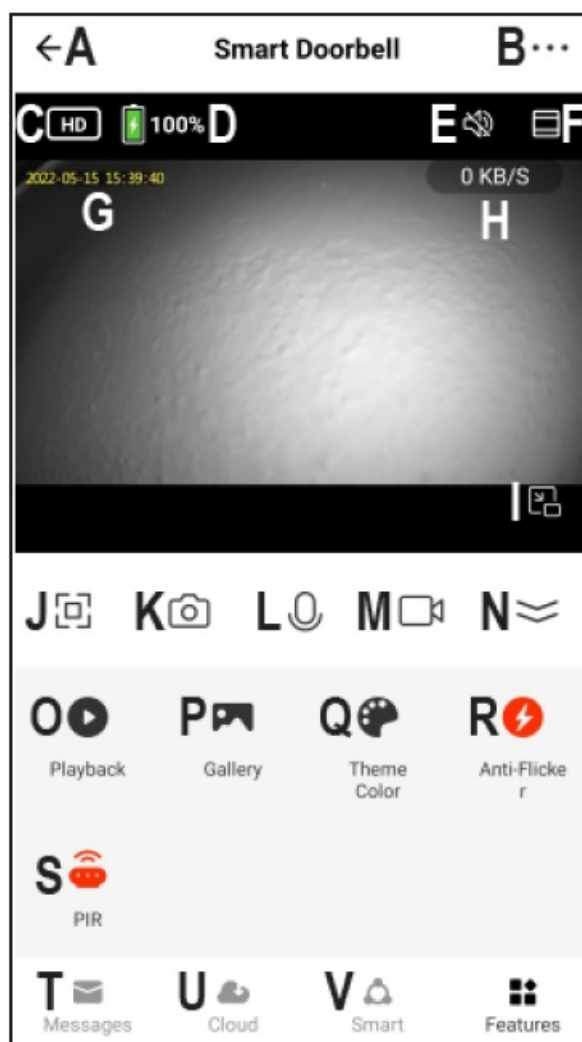
- You can delete the product from the app by tapping on the device on the main page until the delete button appears on the display below. Then tap the button and confirm.
- When the call button on the camera is pressed, the call is automatically redirected to your smartphone. You can accept or decline the “call”.



- A Returns to the app's main page.
- B Tapping the three dots at the top right opens the current device's settings. Here you can assign the device to a room, update the firmware or connect the device to Alexa or Google Assistant.
- C Switches between HD and SD quality.
- D Indicates the battery charge level.
- E Enables or disables the door viewer microphone.
- F Changes the aspect ratio from 16:9 to 4:3.
- G Displays the current date and time.
- H Indicates the current data transmission rate.
- I Pressing this button minimizes the camera image into a small window that is permanently displayed in the foreground.
- J Switches the camera live view to full-screen mode (display is rotated).
- K Creates an image of the current camera view. Images captured manually are saved directly in the gallery on your smartphone.
- L Pressing and holding this button activates the intercom function. Your message spoken into the smartphone's microphone is output via the door viewer loudspeaker. The door viewer microphone is permanently active.
- M Starts and stops manual video recording. Manual video recordings are saved directly in the gallery on your

smartphone.

- N Opens and closes the menu with the O – V buttons.
- O Switches to automatic video recordings playback mode, for example, when motion is detected. Video recordings can be selected by date and time. You can also create photos and videos from automatic video recordings to be saved on your smartphone.
- P All manually captured photos and videos are displayed in the gallery and can be viewed or played back there.
- Q Toggles the app's view between normal and dark mode.
- R Here you can adjust the camera's frame rate.
- S Here you can switch motion detection on and off. You can also choose from three sensitivity levels.
- T Opens the messages when the doorbell rings or motion is detected.
- U Opens the menu for the optional cloud storage.
- V Here you can create schedules for automatic recording or other automated assignments.



The app also has many other functions, such as automated device control (second button at the bottom of the main page). The camera toggles between colour and black and white according to brightness.

Cleaning and care

Important:

- Never use aggressive detergents, rubbing alcohol or other chemical solutions, as these could damage the housing or even impair the functioning of the product.
- Do not immerse the product in water.

- Use a dry, lint-free cloth to clean the product.

Disposal

All electrical and electronic equipment placed on the European market must be labeled with this symbol. This symbol indicates that this device should be disposed of separately from unsorted municipal waste at the end of its service life.

Owners of WEEE shall dispose of it separately from unsorted municipal waste. Spent batteries and accumulators, which are not enclosed by the WEEE, as well as lamps that can be removed from the WEEE in a non-destructive manner, must be removed by end users from the WEEE in a non-destructive manner before it is handed over to a collection point.

Distributors of electrical and electronic equipment are legally obliged to provide free take-back of waste. Conrad provides the following return options free of charge (more details on our website):

- at our Conrad stores
- at the collection points established by Conrad
- at the collection points of public waste disposal agencies or at the collection systems set up by manufacturers and distributors in accordance with the German Electrical and Electronic Equipment Act.

The end user is responsible for deleting personal data from the WEEE to be disposed of. It should be noted that different obligations about the return or recycling of WEEE may apply in countries outside of Germany.

Declaration of Conformity (DOC)

Conrad Electronic SE, Klaus-Conrad-Straße 1, D-92240 Hirschau, hereby declares that this product conforms to Directive 2014/53/EU.

- Click on the following link to read the full text of the EU declaration of conformity:
www.conrad.com/downloads.

Enter the product item number in the search box. You can then download the EU declaration of conformity in the available languages.

Technical data

Power supply

- Battery (built-in).....rechargeable lithium polymer battery, 3.7 V, 5000 mAh
- Operating voltage.....3.7 V/DC
- Current consumption.....max. 500 mA
- Charging voltage.....5 V/DC
- Charging current.....max. 1000 mA
- Charging..... via the micro USB port with the included micro USB cable
- Standby time.....max. 6 months
- Standby power consumption.....max. 600 µA

Camera/door viewer

- Video format.....H.264
- Video resolution.....1920 x 1080 pixels (1080p)
- Camera sensor.....1/2.9" CMOS sensor
- Focal length.....3.4 mm
- Camera angle.....120° (horizontal & vertical)
- Night vision.....max. 3 m
- Motion detection.....max. 5 m
- Supported hole diameter.....approx. 15.5 – 60 mm
- Supported door thickness.....approx. 35 – 105 mm

Display/indoor unit

- Display.....10.92 cm (4.3") TFT LCD monitor
- Display resolution.....480 x 282 pixels
- Supported memory cards.....micro SD, micro SDHC, max. 64 GB

Wireless module

- Wi-Fi.....IEEE802.11b/g/n, 2.4 GHz
- Frequency.....2.4000 – 2.4835 GHz
- Transmission power.....<17 dBm
- Wi-Fi range.....max. 40 m (in open space)

Other

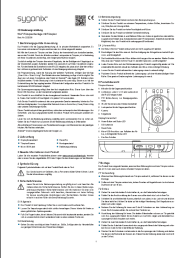
- Features..... intercom function; push notifications for motion detection and doorbell; real-time video and recording, video playback and image recording via the app; supports Amazon Alexa and Google Home
- Supported operating systems.....Android™ 6.0 or later; Apple iOS 10.0 or later
- Dimensions (ø x H).....approx. 65 x 10 mm (camera/door viewer)
- Weight.....approx. 110 g (camera/door viewer)
- Dimensions (W x H x D).....approx. 141 x 92 x 20 mm (display/indoor unit)
- Weight.....approx. 230 g (display/indoor unit)

Ambient conditions

- Operating/storage conditions.....-10 to +50 °C, 0 to 80% RH (non-condensing).

This is a publication by Conrad Electronic SE, Klaus-Conrad-Str. 1, D-92240 Hirschau (www.conrad.com). All rights including translation reserved. Reproduction by any method (e.g. photocopying, microfilming, or capturing in electronic data processing systems) requires prior written approval from the publisher. Reprinting, also in part, is prohibited. This publication reflects the technical status at the time of printing.

Documents / Resources

	<p>sygonix 2525291 Wi-Fi Door Intercom with Door Viewer [pdf] Instruction Manual 2525291, Wi-Fi Door Intercom with Door Viewer, Wi-Fi Door Intercom, Door Intercom, Wi-Fi Intercom, Intercom</p>
---	--

References

- [📄 Document](#)
- [📄 Conrad Electronic » Your Sourcing Platform](#)
- [📄 Document](#)

Manuals+.