

Sygic GPS Navigation and Maps Owner's Manual

[Home](#) » [sygic](#) » Sygic GPS Navigation and Maps Owner's Manual 

Sygic

GPX file tutorial
GPS Navigation and Maps
Owner's Manual

Sygic GPS Navigation & Maps allows in APP to import and export GPS routes via GPX files.

Contents

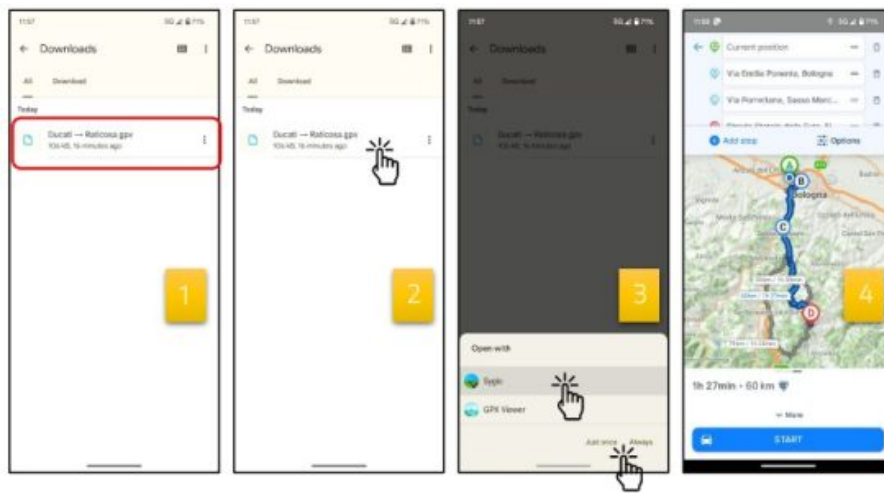
- [1 Import GPX file](#)
- [2 Export GPX file](#)
- [3 Documents / Resources](#)
 - [3.1 References](#)

Import GPX file


If you already have on your device storage the GPX file to use (e.g. in your device files storage, or as attached file in your e-mail, or as shared document in messaging conversation), to import the itinerary in APP simply select the file and open it with Sygic GPS Navigation & Maps app.

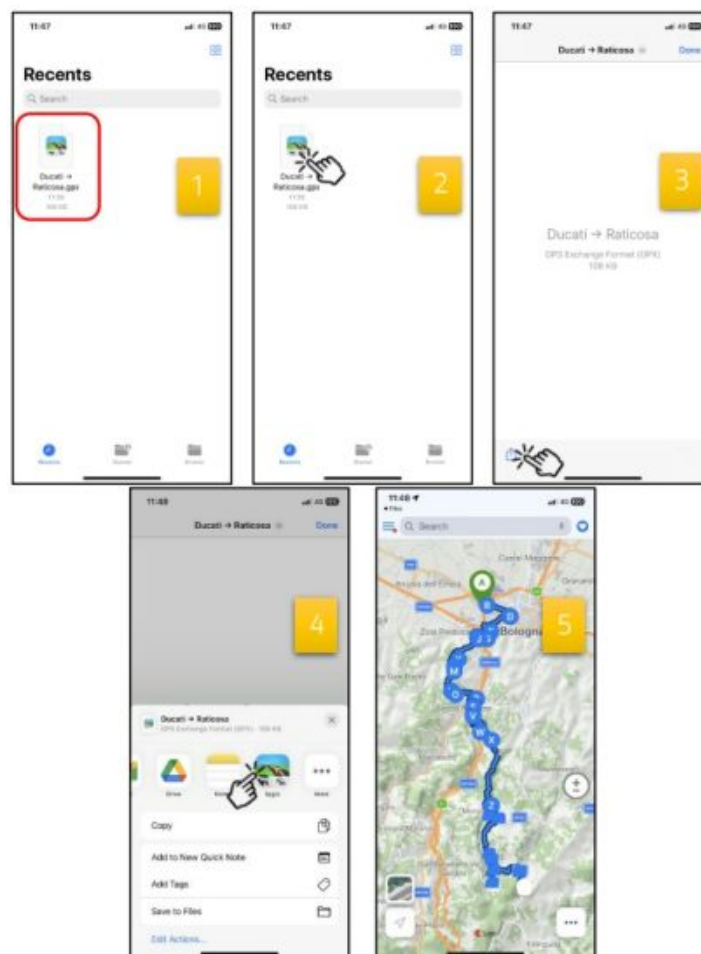
Android steps

1. Find the GPX file on your device.
2. Tap the file.
3. Select Sygic to open the file, choosing between “Just once” or “Always” depending on your preferences (**note:** if Sygic is the only installed APP which can open .gpx files, this step is skipped and the file is automatically opened).
4. Sygic shows the route preview.



iOS steps

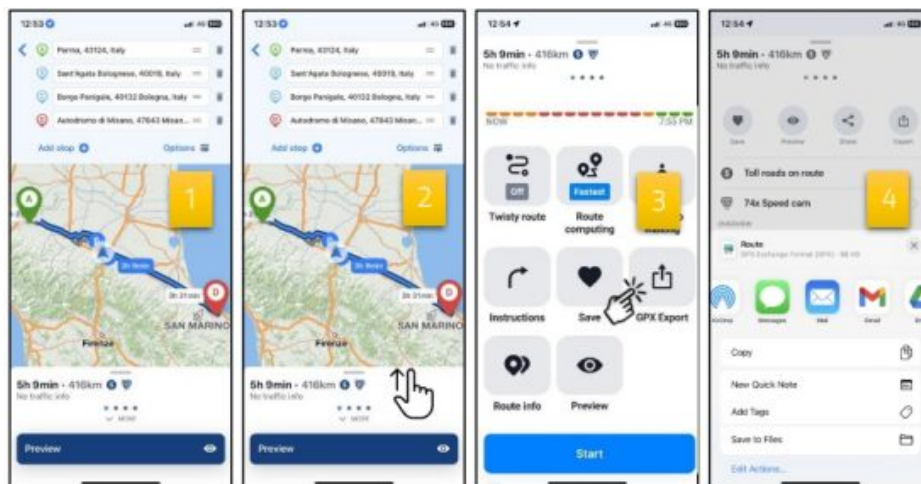
1. Find the GPX file on your device.
2. Tap the file.
3. Tap the Share button .
4. Select Sygic to open the file.
5. Sygic shows the route preview.



Export GPX file


Sygic GPS Navigation & Maps allows you to share a route exporting it as GPX file. To do so, please follow these simple instructions (valid for both iOS and Android operating systems):

1. Create the route to share directly from the APP (see Sygic [User Manual](#) for more details).
2. Swipe up the route settings bar that is located at the bottom of the screen.
3. Tap the “Export GPX” button.
4. Select the location where to save the file, or which APP to share with.



Sygic

Documents / Resources

	<p>Sygic GPS Navigation and Maps [pdf] Owner's Manual GPS Navigation and Maps, GPS, Navigation and Maps, Maps</p>
---	---

References

-  [Sygic](#)
- [User Manual](#)

[Manuals+.](#) [Privacy Policy](#)

This website is an independent publication and is neither affiliated with nor endorsed by any of the trademark owners. The "Bluetooth®" word mark and logos are registered trademarks owned by Bluetooth SIG, Inc. The "Wi-Fi®" word mark and logos are registered trademarks owned by the Wi-Fi Alliance. Any use of these marks on this website does not imply any affiliation with or endorsement.