



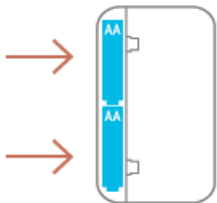
## Switchmate Snap-On Instant Smart Light Switch Manual

[Home](#) » [Switchmate](#) » Switchmate Snap-On Instant Smart Light Switch Manual 

### Installation

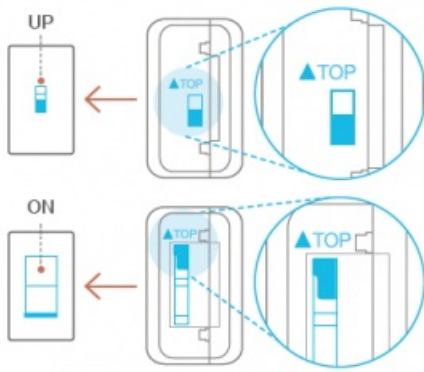
**1**

Install two AA batteries into back of Switchmate.



**2**

Snap Switchmate onto your existing light switch with the light switch and the Switchmate in the “up/TOP “ position. It attaches instantly with the imbedded magnets, no tools or wiring required.



### 3

Download the Switchmate App from the Google Play or Apple App Store onto your phone.



### 4

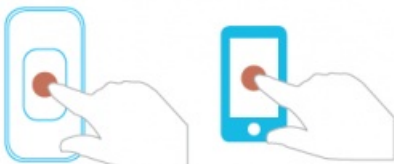
Launch the App and follow the few simple steps to connect and activate your Switchmate in seconds.

- (a) Tap the "Start" button.
- (b) Tap the "Walk me through the install" icon and simply follow the simple steps to activate your Switchmate.



### 5

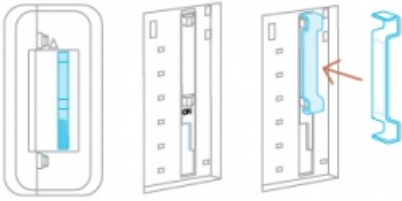
Test Switchmate both manually at the light switch and using the App.



\*Due to variations in the effective range of Bluetooth technology, there may be a 2-4 seconds response time from the wall switch.

\*note that a small percentage of rocker switches require the utilization of an adaptor to activate correctly. Simply attach the

adaptor included as shown in this graphic below and snap Switchmate back onto the switch. If that is still not working properly, be sure that the screws that hold your light switch plate to the wall are fully tightened.



## Hello

Thank you for purchasing Switchmate.  
We are excited to bring of mind into your home.



### Timer

Schedule when you want your lights to turn on or off and have this on repeat.



### Reverse

Press Reverse if Switchmate on/off does not match your light switch on/off position.



### Close Range

Let your light welcome you home when you within range of Switchmate.



### Battery Life

View your Switchmate's battery life and receive alerts when it's time to change the batteries.



### Manual Press

Use the Switchmate as a manual lightswitch by pressing the center button.



### Flexibility

Bring the settings with you wherever you go.



### Welcome Home Feature For iOS devices

- Within the Switchmate app, select your desired switch to add this feature
- Select Welcome
- Set Start/Stop Time (ensure toggle is in "On" Position)
- To disable feature, slide toggle to off position

## For Android devices

- Within the Switchmate App, select your desired switch to add this feature
- Select Welcome
- Set Start/Stop Time and Exit out of this feature to save setting
- To disable feature, slide toggle to off position

if you have multiple switches within 30 feet, we suggest that you only enable Welcome Home Feature on one of those switches.

## Package Contents



**1x**

Switchmate, rocker or toggle version



**2x**

AA Batteries

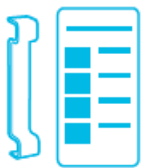


**2x**

Quick Start Guides

1 English

1 French and Spanish



**\*Only for rocker version**

**1x**

Rocker Adapter, one pre-installed

Switchmate Snap-On Instant Smart Light Switch Manual – [Optimized PDF](#)  
 Switchmate Snap-On Instant Smart Light Switch Manual – [Original PDF](#)