



SwitchBot Smart Switch Button Pusher User Manual

[Home](#) » [SwitchBot](#) » SwitchBot Smart Switch Button Pusher User Manual 

Contents

- [1 SwitchBot Smart Switch Button Pusher](#)
- [2 INTRODUCTION](#)
- [3 Getting Started](#)
- [4 Installation](#)
- [5 Reset Factory Settings](#)
- [6 Specifications](#)
- [7 Safety Information](#)
- [8 FCC Warning](#)
- [9 Documents / Resources](#)
 - [9.1 References](#)
- [10 Related Posts](#)

SwitchBot Bot

SwitchBot Smart Switch Button Pusher



INTRODUCTION

Package Contents



Bot × 1
(CR2 battery included)



User Manual × 1



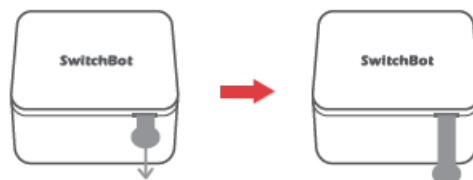
Add-on × 2



Spare Adhesive
Tape × 1

Getting Started

1. Remove the plastic battery isolation tab.



2. Download the Switch Bot app.



iOS 11.0+



Android OS 5.0+

3. Enable Bluetooth on your smartphone.



4. Open our app and tap the Bot icon on the Home page to control it. If the Bot icon does not appear, swipe down to refresh the page.

Note: You do not need a Switch Bot account to control your Bot. However, we recommend that you register a Switch Bot account and add your Bot to your account to experience more features, for example, remote control (requiring a SwitchBot Hub Mini sold separately).

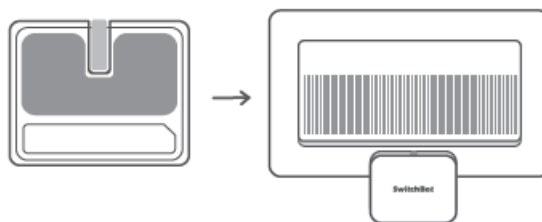
Add to Switch Bot Account

- Register a Switch Bot account and sign in from the app's Profile page. Then add your Bot to your account.
- Learn more at <http://support.switch-bot.com/hc/en-us/articles/360037695814>



Installation

Install Bot near your switch using the adhesive tape.



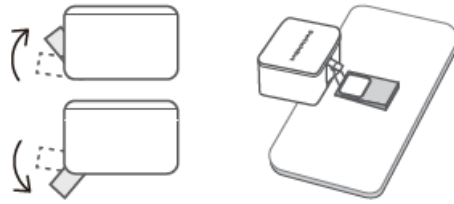
Mode

There are two modes of Bot. Choose a mode to control your Bot according to your need. (Bot's mode could be changed in our app.)

- **Press mode:** for push buttons or one-way control switches.



- **Switch mode:** for push and pull switches (requiring an add-on).



Note: Make sure the surface is clean and dry before applying the adhesive tape. After installing your Bot, wait for at least 24 hours for the adhesiveness to take effect.

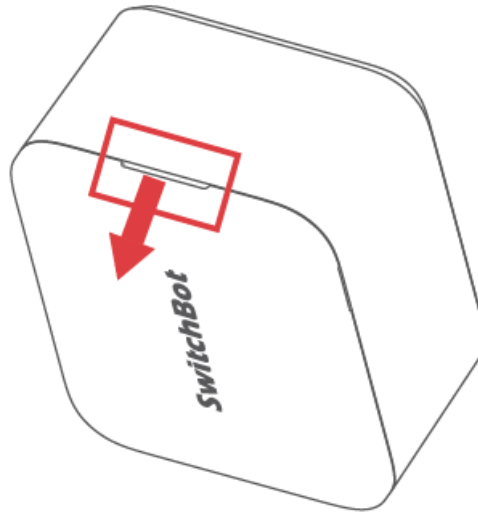
Voice Commands

- Alexa, turn on the living room light>.
- Hey Siri, make me a coffee
- OK Google, turn off the bedroom light
- You can set Bot's alias in the Switch Bot app.
- You can personalize phrases in Siri Shortcuts.
- If you have a Switch Bot Hub Mini(sold separately), you can control your Bot remotely using voice commands.
- Enable Cloud Service first before using voice commands. Learn more <https://support.switch-bot.com/hden-us/sections/360005960714>



Replace the Battery

1. Prepare a CR2 battery.
2. Remove the cover from the notch on the side of the device.
3. Replace the battery.
4. Put the cover back on the device.



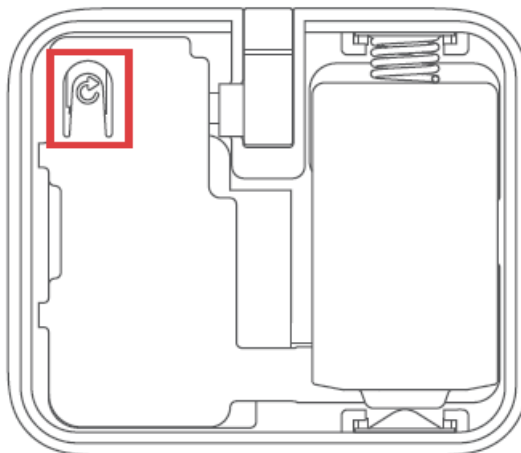
- Learn more at <http://support.switch-bot.com/hc/en-us/articles/360037747374>



www.switch-bot.com V2.2-2207

Reset Factory Settings

- Remove the cover and press the reset button, then the device's password, mode and schedule will be restored to the factory settings.



Specifications

- **Size:** 43 x 37 x 24 mm (1.7 x 1.45 x 0.95 in.) **Weight:** Approx. 42 g (1.48 OZ.)

- **Power:** Replaceable CR2 battery x 1 (600 days of use under lab controlled conditions of 25
- **Network Connectivity:** c (77 °F], twice a day) Bluetooth Low Energy 4.2 and above
- **Range:** Up to 80 m (87.5 yd.) in open area Swinging Angle: 135° max.
- **Torque Strength:** 1.0 kgf max.
- **System Requirements:** iOS 11.0+, Android OS 5.0+, watchOS 4.0+

Safety Information

- Only for use in dry environments, Do not use your device near sinks or other wet places,
- Do not expose your Bot to steam, extremely hot or cold environments.
- Do not place your Bot near any heat sources such as space heaters, heater vents, radiators, stoves, or other things that produce heat.
- Your Bot is not intended for use with medical or life support equipment.
- Do not use your Bot to operate equipment for which inaccurate timing or accidental on/off commands could be dangerous (e.g. saunas, sunlamps, etc.).
- Do not use your Bot to operate equipment for which continuous or unsupervised operations could be dangerous (e.g. stoves, heaters, etc.).

Warranty

We warrant to the original owner of the product that the product will be free from defects in materials and workmanship for a period of one year from the date of purchase. Please note that this limited warranty does not cover

1. *Products submitted beyond the original one-year limited warranty period.*
2. Products on which repairs or modifying have been attempted.
3. Products subjected to falls, extreme temperatures, water, or other operating conditions outside the product specifications.
4. Damage due to natural disaster (including but not limited to lightning, flood, tornado, earthquake, or hurricane, etc.).
5. Damage due to misuse, abuse, negligence or casualty (e.g. fire).
6. Other damage that is not attributable to defects in the manufacture of product materials.
7. Products purchased from unauthorized resellers.
8. Consumable parts [including but not limited to batteries).
9. Natural wear of the product.

Contact & Support

- **Setup and Troubleshooting** support.switch-bot.com
- **Support Email:** support@wondertechlabs.com
- **Feedback:** If you have any concerns or problems when using our products, please send feedback via our app through the Profile> Feedback page.

CE/UKCA Warning

RF exposure information: The EIRP power of the device at maximal case is below the exempt condition, 20 mW specified in EN 62479: 2010. RF exposure assessment has been performed to prove that this unit will not generate the harmful EM emission above the reference level as specified in EC Council Recommendation (1999/519/EC).

CE DOC

- Hereby, Woan Technology (Shenzhen) Co., Ltd. declares that the radio equipment type SwitchBot-S1 is in compliance with Directive 2014/53/EU. The full text of the EU declaration of conformity is available at the following internet **address:** support.switch-bot.com

address: support.switch-bot.com

This product can be used in EU member states and UK.

Manufacturer: Woan Technology (Shenzhen) Co .

Ltd. Address

Room 1101, Qingcheng commercial center, No. 5 Haiphong Road, Mabu Community, Xixiang Subdistrict, Bao'an District, Shenzhen, Guangdong, P.R.China, 518100

- **EU Importer Name:** Amazon Services Europe Importer
- **Address:** 38 Avenue John F Kennedy, L-1855 Luxembourg

Operation frequency (Max power) BLE: 2402 MHz to 2480 MHz (5.0 dBm) Operation temperature: 0°C to 55°C

UKCADO

- Hereby, Wean Technology (Shenzhen) Co., Ltd. declares that the radio equipment type SwitchBot-S1 is in compliance with UK Radio Equipment Regulations (SI 2017/1206). The full text of the UK declaration of conformity is available at the following internet.

FCC Warning

This device complies with Part 15 of the FCC Rules. Operation is subject to the following two conditions

1. This device may not cause harmful interference.
2. This device must accept any interference received, including interference that may cause undesired operation.

NOTE: This equipment has been tested and found to comply with the limits for a Class B digital device, pursuant to part 15 of the FCC Rules. These limits are designed to provide reasonable protection against harmful interference in a residential installation.

This equipment generates uses and can radiate radio frequency energy and, if not installed and used in accordance with the instructions, may cause harmful interference to radio communications. However, there is no guarantee that interference will not occur in a particular installation. If this equipment does cause harmful interference to radio or television reception, which can be determined by turning the equipment off and on, the user is encouraged to try to correct the interference by one or more of the following measures

- Reorient or relocate the receiving antenna.
- Increase the separation between the equipment and receiver.

- Connect the equipment into an outlet on a circuit different from that to which the receiver is connected.
- Consult the dealer or an experienced radio/TV technician for help.

NOTE: The manufacturer is not responsible for any radio or 1V interference caused by unauthorized modifications to this equipment. Such modification Id void the user’s authority to operate the equipment.

FCC Radiation Exposure Statement

- The device has been evaluated to meet general RF exposure requirement. The device can be used in portable exposure condition without restriction.

Documents / Resources

	SwitchBot Smart Switch Button Pusher [pdf] User Manual Smart Switch Button Pusher, Switch Button Pusher, Button Pusher, Pusher
---	---

References

- [User Manual](#)