



SwitchBot S1 Smart Switch Button Pusher User Manual

[Home](#) » [SwitchBot](#) » SwitchBot S1 Smart Switch Button Pusher User Manual 

Contents

- [1 SwitchBot S1 Smart Switch Button Pusher](#)
- [2 Product Usage Instructions](#)
- [3 Package Contents](#)
- [4 Getting Started](#)
- [5 Installation](#)
- [6 Using Voice Commands](#)
- [7 Connect SwitchBot Bot to SwitchBot Hub](#)
- [8 How to Replace Your Battery](#)
- [9 Resetting Factory Settings](#)
- [10 Specifications](#)
- [11 Safety Information](#)
- [12 Warranty](#)
- [13 Contact & Support](#)
- [14 CE/UKCA Warning](#)
- [15 FCC STATEMENT](#)
- [16 Documents / Resources](#)
 - [16.1 References](#)
- [17 Related Posts](#)

SwitchBot

SwitchBot S1 Smart Switch Button Pusher



Product Information

The SwitchBot Bot is a device that allows you to control switches and buttons remotely using your smartphone. It is compatible with iOS 11.0+ and Android OS 5.0+.

Product Usage Instructions

1. Remove the plastic battery isolation tab from the SwitchBot Bot.
2. Download the SwitchBot app on your smartphone. Ensure that you have iOS 11.0+ or Android OS 5.0+.
3. Enable Bluetooth on your smartphone.
4. Open the SwitchBot app. The Bot should appear on the home page once discovered. If it doesn't appear, swipe down to refresh the page.
5. To control your Bot, simply tap on the device in the app. Note that you do not need a SwitchBot account to control your Bot, but it is recommended to register an account and add your device for additional features.
6. If you want to add devices to your account, register a SwitchBot account and sign in from the app's Profile page. Then, add your Bot to your account by following the instructions provided at <http://support.switch-bot.com/hc/en-us/articles/360037695814>.
7. To attach the SwitchBot Bot to a switch, use the adhesive tape provided. Ensure that the installation surface is clean and dry before applying the tape. Wait for at least 24 hours for adhesiveness to take effect.
8. You can choose between Press mode and Switch mode to control your device. You can change the mode via the SwitchBot app at any time.
9. If you have a SwitchBot Hub (sold separately), you can connect your Bot to it for remote control using voice commands. Make sure your SwitchBot App version is up to date and follow the instructions in the app to connect the Bot to the Hub.
10. To replace the battery, prepare a CR2 battery. Remove the cover from the side of the device, replace the battery, and put the cover back on. Refer to <http://support.switch-bot.com/hc/en-us/articles/360037747374>

for more information.

Please read this user manual carefully before using your device.

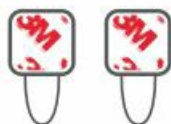
Package Contents



Bot × 1
(CR2 battery included)



User Manual × 1

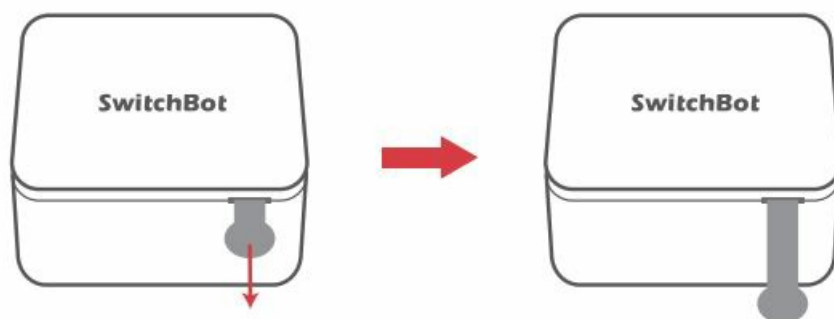


Add-on × 2



Spare Adhesive
Tape × 1

Getting Started



1. Remove the plastic battery isolation tab.

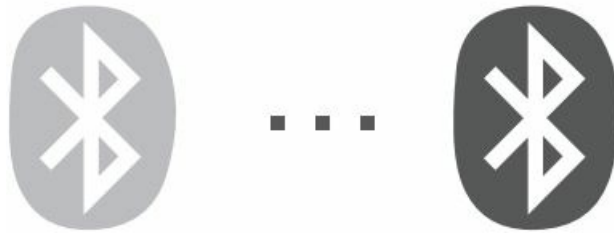


iOS 11.0+



Android OS 5.0+

2. Download the SwitchBot app.



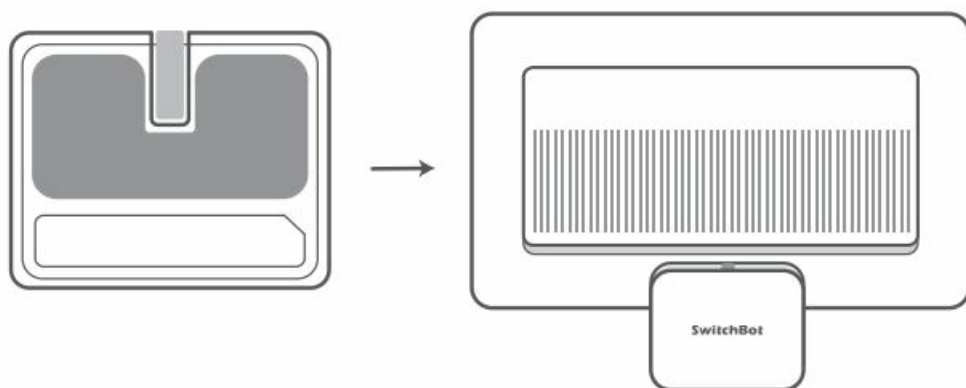
3. Enable Bluetooth on your smartphone.
4. Open our app, your SwitchBot Bot should appear on the home page once discovered and you can simply tap on your device to control it. If your device doesn't appear, swipe down to refresh the page.
 - **Please note:** You do not need a SwitchBot account to control your Bot. However, we recommend that you register a SwitchBot account and add your device to your account to make the most of other features.

Adding Devices to Your Account



- Register a SwitchBot account and sign in from the app's Profile page. Then add your Bot to your account.
- Learn more at: <http://support.switch-bot.com/hc/en-us/articles/360037695814>

Installation

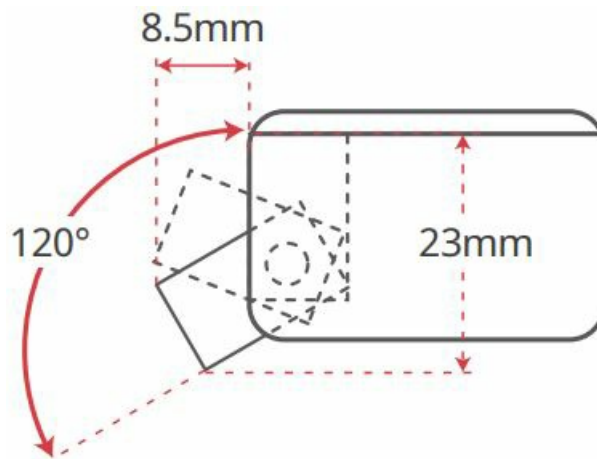


- Attach SwitchBot Bot to a switch using the adhesive tape provided.

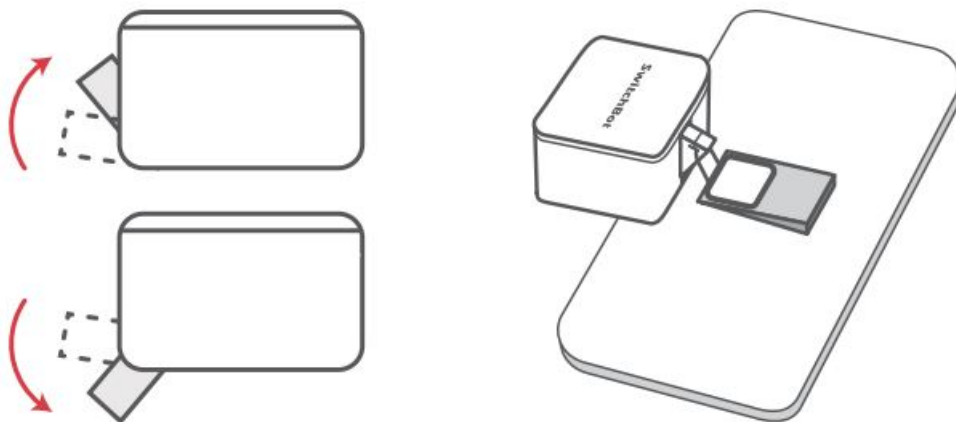
Select an Operation Mode

- There are two different ways to operate SwitchBot Bot.
- Choose a mode to control your device according to your needs. You can change which mode you use via our

app at any time.



- **Press mode:** used for pushing buttons or one-way control switches



- **Switch mode:** used for pushing and pulling switches (requires an add-on).

Please note: make sure your installation surface is clean and dry before applying adhesive tape. After installation is complete please wait for at least 24 hours for adhesiveness to take effect.

Using Voice Commands

Alexa, turn on my living room light.*

Hey Siri, make me a coffee**.

Hey Google, turn off my bedroom light.*

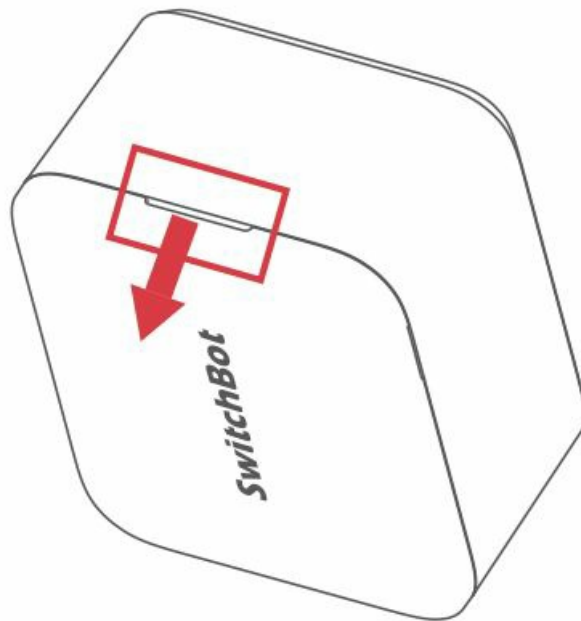
- You can give your SwitchBot Bot an alias via our app.
- Done using personalized phrases in Siri Shortcuts.

If you have a SwitchBot Hub (sold separately), you can control your Bot remotely using voice commands.

Connect SwitchBot Bot to SwitchBot Hub

- **Related Products:** SwitchBot Hub Mini, SwitchBot Hub 2 (Additional purchase required)
- **SwitchBot App Version:** 7.3.2 or newer
 - Make sure your SwitchBot App version is up to date.
 - Make sure SwitchBot Bot and SwitchBot Hub Mini/ Hub 2 have been added to your App and your device firmware version is up to date.
 - Please enable the Cloud Service on the Bot settings screen.
 - Tap the Bot
 - Tap Cloud Service
 - Enable the Cloud Service(connect your Hub Mini/ Hub 2 to enable its Cloud Service.)
 - **Note:** Cloud services can not be used when using “Nearby Bot.”
- Since the Bot communicates with the SwitchBot Hub series product via Bluetooth, please do not install it in a place far from the Hub series product.

How to Replace Your Battery



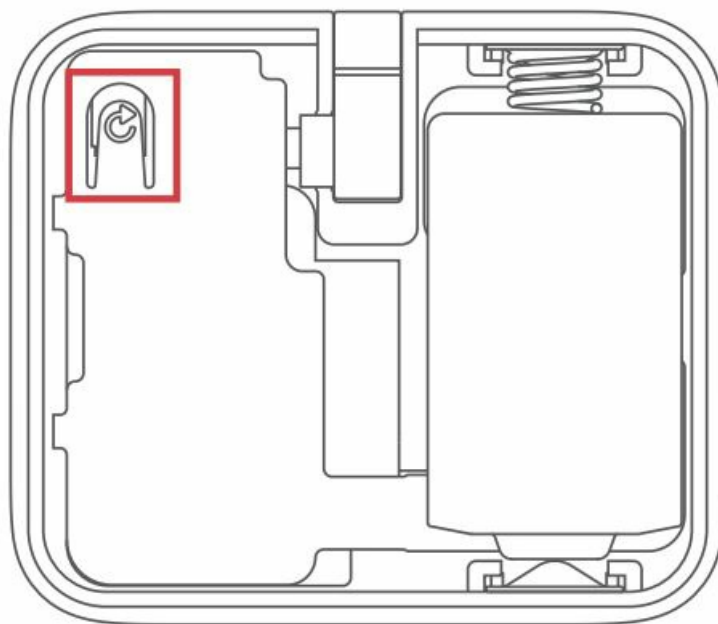
1. Prepare a CR2 battery.
2. Remove the cover from the notch on the side of the device.
3. Replace the battery.
4. Put the cover back on the device.

Learn more by visiting



- <http://support.switch-bot.com/hc/en-us/articles/360037747374>

Resetting Factory Settings



- To reset factory settings, simply remove the cover of your SwitchBot Bot and press the reset button.
- Your device password, mode settings, and schedules will be restored to the factory settings.

Specifications

- **Size:** 43 × 37 × 24 mm (1.7 × 1.5 × 0.9 in.)
- **Weight:** Approx. 42 g (1.5 oz.)
- **Power:** Replaceable CR2 battery × 1
 - (600 days of use under lab controlled conditions of 25 °C [77 °F], twice daily.)
- **Network Connectivity:** Bluetooth Low Energy 4.2 and above
- **Transmission Range:** Up to 80 m (87.5 yd.) in open areas
- **Swinging Angle:** 120° max.
- **Torque Strength:** 1.0 kgf max.
- **System Requirements:** iOS 11.0+, Android OS 5.0+, watchOS 4.0+

Safety Information

- Only for use in dry environments. Do not use your device near sinks or other wet places.
- Do not expose your Bot to steam, extremely hot or cold environments.
- Do not place your Bot near any heat sources such as space heaters, heater vents, radiators, stoves, or other things that produce heat.
- Your Bot is not intended for use with medical or life support equipment.
- Do not use your Bot to operate equipment for which inaccurate timing or accidental on/off commands could be dangerous (e.g. saunas, sunlamps, etc.).
- Do not use your Bot to operate equipment for which continuous or unsupervised operations could be dangerous (e.g. stoves, heaters, etc.).

Warranty

We warrant to the original owner of the product that the product will be free from defects in materials and workmanship. Please note that this limited warranty does not cover:

1. Products submitted beyond the original limited warranty period.
2. Products on which repairs or modifying have been attempted.
3. Products subjected to falls, extreme temperatures, water, or other operating conditions outside the product specifications.
4. Damage due to natural disaster (including but not limited to lightning, flood, tornado, earthquake, or hurricane, etc.).
5. Damage due to misuse, abuse, negligence or casualty (e.g. fire).
6. Other damage that is not attributable to defects in the manufacture of product materials.
7. Products purchased from unauthorized resellers.
8. Consumable parts (including but not limited to batteries).
9. Natural wear of the product.

Contact & Support

- **Setup and Troubleshooting:** support.switch-bot.com
- **Support Email:** support@switch-bot.com

Feedback: If you have any concerns or problems when using our products, please send feedback via our app through the Profile > Help & Feedback page.

CE/UKCA Warning

RF exposure information: The EIRP power of the device at maximal case is below the exempt condition, 20 mW specified in EN 62479: 2010. RF exposure assessment has been performed to prove that this unit will not generate the harmful EM emission above the reference level as specified in EC Council Recommendation(1999/519/EC).

CE DOC

Hereby, Woan Technology (Shenzhen) Co., Ltd. declares that the radio equipment type SwitchBot-S1 is in compliance with Directive 2014/53/EU. The full text of the EU declaration of conformity is available at the following internet address: support.switch-bot.com

UKCA DOC

Hereby, Woan Technology (Shenzhen) Co., Ltd. declares that the radio equipment type SwitchBot-S1 is in compliance with UK Radio Equipment Regulations

(SI 2017/1206). The full text of the UK declaration of conformity is available at the following internet address: support.switch-bot.com

This product can be used in EU member states and UK.

- **Manufacturer:** Woan Technology (Shenzhen) Co., Ltd.
- **Address:** Room 1101, Qiancheng Commercial Center, No. 5 Haicheng Road, Mabu Community, Xixiang Subdistrict, Bao'an District, Shenzhen, Guangdong, P.R.China, 518100

Operation frequency (Max power)

- **BLE:** 2402 MHz to 2480 MHz (5.0 dBm)
- **Operation temperature:** 0 °C to 55 °C

FCC STATEMENT

This device complies with Part 15 of the FCC Rules. Operation is subject to the following two conditions:

1. This device may not cause harmful interference.
2. This device must accept any interference received, including interference that may cause undesired operation.

NOTE: This equipment has been tested and found to comply with the limits for a Class B digital device, pursuant to part 15 of the FCC Rules. These limits are designed to provide reasonable protection against harmful interference in a residential installation.

This equipment generates uses and can radiate radio frequency energy and, if not installed and used in accordance with the instructions, may cause harmful interference to radio communications. However, there is no guarantee that interference will not occur in a particular installation. If this equipment does cause harmful interference to radio or television reception, which can be determined by turning the equipment off and on, the user is encouraged to try to correct the interference by one or more of the following measures:

- Reorient or relocate the receiving antenna.
- Increase the separation between the equipment and receiver.
- Connect the equipment into an outlet on a circuit different from that to which the receiver is connected.
- Consult the dealer or an experienced radio/TV technician for help.

NOTE: The manufacturer is not responsible for any radio or TV interference caused by unauthorized modifications to this equipment. Such modifications could void the user's authority to operate the equipment.

FCC Radiation Exposure Statement

The device has been evaluated to meet general RF exposure requirement. The device can be used in portable exposure condition without restriction.

IC Warning

This device contains license-exempt transmitter(s)/ receiver(s) that comply with Innovation, Science and Economic Development Canada's license-exempt RSS(s). Operation is subject to the following two conditions:


1. This device may not cause interference.
2. This device must accept any interference, including interference that may cause undesired operation of the device.

IC Radiation Exposure Statement

- This equipment complies with the limits of exposure to IC radiation defined for an uncontrolled environment.

www.switch-bot.com

Documents / Resources

	SwitchBot S1 Smart Switch Button Pusher [pdf] User Manual S1 Smart Switch Button Pusher, S1, Smart Switch Button Pusher, Switch Button Pusher, Button Pusher, Smart Button Pusher, Button Pusher S1
---	--

References

- [Home | Toronto Region Board of Trade](#)
- [SwitchBot Official Website - Your Simple Switch to a Smart Home – SwitchBot International](#)
- [User Manual](#)