



## KR-2205 SwitchBot Hub Mini User Manual

[Home](#) » [SwitchBot](#) » KR-2205 SwitchBot Hub Mini User Manual 

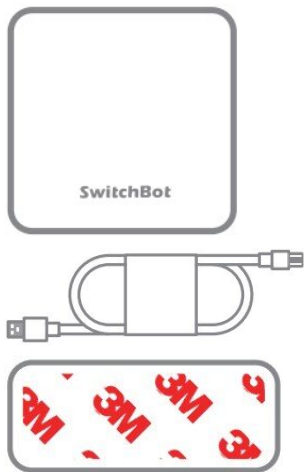
### KR-2205 SwitchBot Hub Mini User Manual



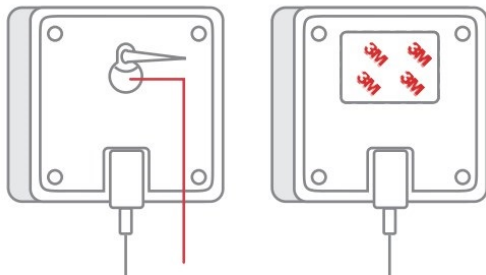
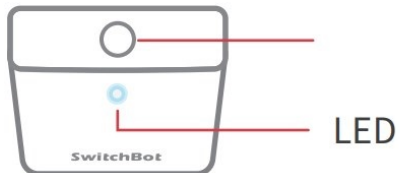
## Contents

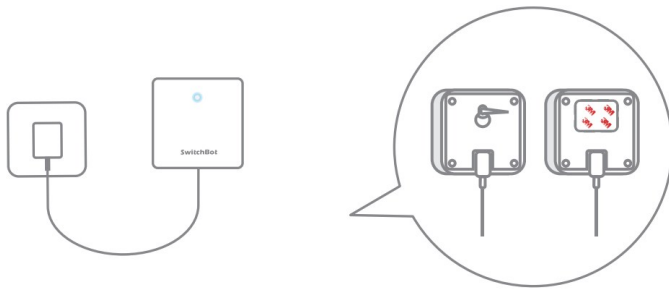
- 1 Package Contents
- 2 Product Instruction
- 3 Dimension
  - 3.1 FCC Warning
  - 3.2 CE Warning
- 4 Documents / Resources
  - 4.1 References
- 5 Related Posts

## Package Contents

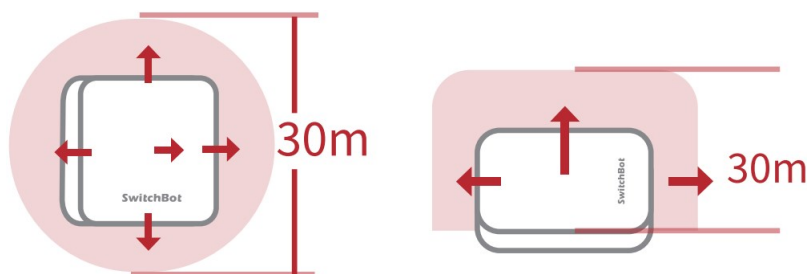


## Product Instruction





## Dimension



## FCC Warning

This device complies with part 15 of the FCC Rules. Operation is subject to the following two conditions: (1) This device may not cause harmful interference, and (2) this device must accept any interference received, including interference that may cause undesired operation. Any Changes or modifications not expressly approved by the party responsible for compliance could void the user's authority to operate the equipment. This equipment has been tested and found to comply with the limits for a Class B digital device, pursuant to part 15 of the FCC Rules. These limits are designed to provide reasonable protection against harmful interference in a residential installation.

This equipment generates uses and can radiate radio frequency energy and, if not installed and used in accordance with the instructions, may cause harmful interference to radio communications. However, there is no guarantee that interference will not occur in a particular installation. If this equipment does cause harmful interference to radio or television reception, which can be determined by turning the equipment off and on, the user is encourage to try to correct the interference by one or more of the following measures:

- Reorient or relocate the receiving antenna.
- Increase the separation between the equipment and receiver.
- Connect the equipment into an outlet on a circuit different from that to which the receiver is connected.
- Consult the dealer or an experienced radio/TVtechnician for help. The device has been evaluated to meet general RF exposure requirement. The device can be used in portable exposure condition without restriction.

## FCC RF Exposure statement:

This equipment complies with FCC Radiation exposure limit set forth for uncontrolled environment. This equipment should be installed and operated with minimum distance 20cm between the radiator and your body.

## CE Warning

**Manufacturer's Name:** Woan Technology (Shenzhen) Co., Ltd.

**Sample Description:** SwitchBot Hub Mini

**Trade Mark:** SwitchBot

**Model number:** W0202200

**Operating Temperature:** -10°C to 60°C

This product is a fixed location. To comply with RF exposure requirements, a minimum separation distance of 20cm must be maintained between the user's body and the device, including the antenna. Use only the supplied or an approved antenna. This device in compliance with the essential requirements and other relevant provisions of Directive 2014/53/EU. All essential radio test suites have been carried out.

1. **CAUTION** : RISK OF EXPLOSION IF BATTERY IS REPLACED BY AN INCORRECT TYPE. DISPOSE OF USED BATTERIES ACCORDING TO THE INSTRUCTIONS.
2. The device complies with RF specifications when the device used at 20cm from your body.

## Documents / Resources



[SwitchBot KR-2205 SwitchBot Hub Mini](#) [pdf] User Manual  
KR-2205 SwitchBot Hub Mini, KR-2205, SwitchBot Hub Mini, Hub Mini, Mini

## References

- [S SwitchBot Official Website - Your Simple Switch to a Smart Home – SwitchBot International](#)