

# Bot-SMS-EN-2205 SwitchBot Bot User Manual

### Contents

- 1 SwitchBot Bot
  - 1.1 User Manual
  - 1.2 Package Contents
  - 1.3 Getting Started
  - 1.4 Add to SwitchBot Account
  - 1.5 Installation
    - 1.5.1 Mode
  - 1.6 Voice Commands
  - 1.7 Replace the Battery
  - 1.8 Reset Factory Settings
  - 1.9 Specifications
  - 1.10 Disclaimer
  - 1.11 Return & Refund Policy
  - 1.12 Contact & Support
  - 1.13 CE Warning
  - 1.14 FCC Warning
- 2 Documents / Resources
  - 2.1 References
- 3 Related Posts

## SwitchBot Bot

### User Manual



Please read this user manual carefully before using your device.

### Package Contents



Bot × 1 (CR2 battery included)



User Manual × 1



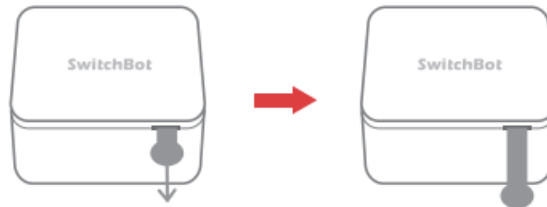
Add-on × 2



Spare Adhesive Tape × 1

## Getting Started

1 Remove the plastic battery isolation tab.



2 Download SwitchBot app.



iOS 11.0+



Android OS 5.0+

3 Enable Bluetooth on your smartphone.



4 Open our app and tap the Bot icon on the Home page to control it. If the Bot icon does not appear, swipe down to refresh the page.

**Note:** You do not need a SwitchBot account to control your Bot. However, we recommend that you register a SwitchBot account and add your Bot to your account to experience more features, for example, remote control (requiring a SwitchBot Hub Mini sold separately).

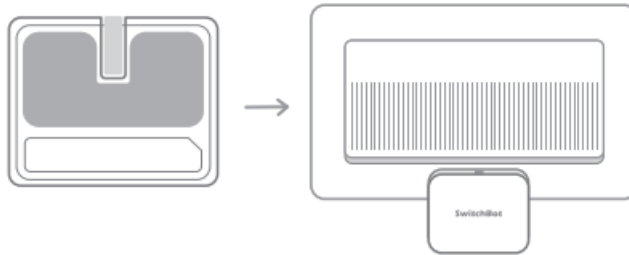
### Add to SwitchBot Account

Register a SwitchBot account and sign in from the app's Profile page. Then add your Bot to your account. Learn more at <http://support.switch-bot.com/hc/en-us/articles/360037695814>



## Installation

Install Bot near your switch using the adhesive tape.



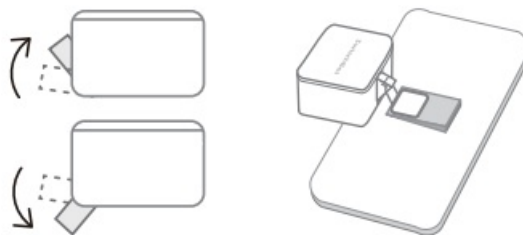
## Mode

There are two modes of Bot. Choose a mode to control your Bot according to your need. (Bot's mode could be changed in our app.)

**Press mode:** for push buttons or one-way control switches.



**Switch mode:** for push and pull switches (requiring an add-on).



**Note:** Make sure the surface is clean and dry before applying the adhesive tape. Then wait for at least 24 hours for the adhesiveness to take effect.

## Voice Commands

Alexa, turn on the living room light\*.

Hey Siri, make me a coffee\*\*.

OK Google, turn off the bedroom light\*.

- \* You can set Bot's alias in the SwitchBot app.
- \*\* You can personalize phrase in Siri Shortcuts.

If you have a SwitchBot Hub Mini(sold separately), you can control your Bot remotely using voice commands.

Enable Cloud Service first before using voice commands. Learn more at

<https://support.switch-bot.com/hc/en-us/sections/360005960714>



Siri Shortcuts

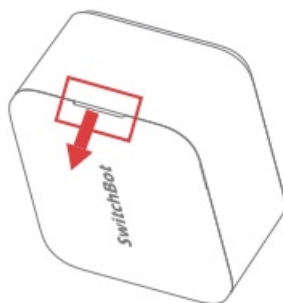


Works with  
SmartThings

LINE  
CLOVA

### Replace the Battery

1. Prepare a CR2 battery.
2. Remove the cover from the notch on the side of the device.
3. Replace the battery.
4. Put the cover back on the device.

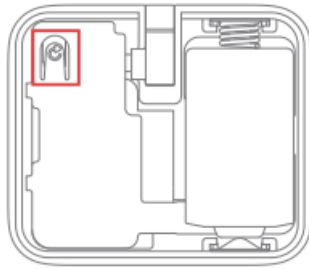


Learn more at <http://support.switch-bot.com/hc/en-us/articles/360037747374>



### Reset Factory Settings

Remove the cover and press the reset button, then the device's password, mode and schedule will be restored to the factory settings.



## Specifications

Size: 43 × 37 × 24 mm (1.7 × 1.45 × 0.95 in.)

Weight: Approx. 42 g (1.48 oz.)

Power: Replaceable CR2 battery x 1

(600 days of use under lab controlled conditions of 25 [77 ], twice a day)

Network Connectivity: Bluetooth Low Energy 4.2 and above

Range: Up to 80 m (87.5 yd.) in open area

Swinging Angle: 135° max.

Torque Strength: 1.0 kgf max.

System Requirements: iOS 11.0+, Android OS 5.0+, watchOS 4.0+

## Disclaimer

- Only for use in dry environments. Do not use your device near sinks or other wet places.
- Do not expose your Bot to steam, extremely hot or cold environments. For example, do not place your Bot near any heat sources such as space heaters, heater vents, radiators, stoves, or other things that produce heat.
- Your Bot is not intended for use with medical or life support equipment.
- Do not use your Bot to operate equipment for which inaccurate timing or accidental on/off commands could be dangerous (e.g. saunas, sunlamps, etc.).
- Do not use your Bot to operate equipment for which continuous or unsupervised operations could be dangerous (e.g. stoves, heaters, etc.).

## Return & Refund Policy

This product has a one-year warranty which begins from date of purchase. Should the following situations occur, your warranty and/or your eligibility for a return or refund may not be valid.

- Intended damage or abuse.
- Inappropriate storage (including dropping or soaking in water).
- Unauthorized modifying or repair of product.
- Natural wear of product.
- Natural disasters.

## Contact & Support

Setup and Troubleshooting:

[support.switch-bot.com](https://support.switch-bot.com)

Support Email:

[support@wondertechlabs.com](mailto:support@wondertechlabs.com)

Feedback: If you have any concerns or problems when using our products, please send feedback via our app

through the Profile > Feedback page.

## CE Warning

1. Risk of explosion if battery is replaced with an incorrect type. Dispose of used batteries according to instructions.
2. The operating temperature of the EUT can't exceed 55 °C and shouldn't be lower than 0 °C . Hereby, Woan Technology (Shenzhen) Co., Ltd. declares that this product is in compliance with essential requirements and other relevant provisions of Directive 2014/53/EU.
3. RF exposure information: The EIRP power of the device at maximal case is below the exempt condition, 20 mW specified in EN62479: 2010. RF exposure assessment has been performed to prove that this unit will not generate the harmful EM emission above the reference level as specified in EC Council Recommendation(1999/519/EC).
4. Manufacturer: Woan Technology (Shenzhen) Co., Ltd.  
Address: Room 1101, Qiancheng Commercial Center, No. 5 Haicheng Road, Mabu Community, Xixiang Subdistrict, Bao'an District, Shenzhen, Guangdong, P.R.China, 518100
5. EU Importer Name: Amazon Services Europe Importer Address: 38 Avenue John F Kennedy, L-1855 Luxembourg.
6. Operation frequency (Max power) Wi-Fi: 2402 MHz to 2480 MHz (5.0 dBm). This product is allowed to be used in all EU member states. Guangdong, P.R.China, 518100

## FCC Warning

This device complies with part 15 of the FCC Rules. Operation is subject to the following two conditions: (1) This device may not cause harmful interference, and (2) this device must accept any interference received, including interference that may cause undesired operation. Any changes or modifications not expressly approved by the party responsible for compliance could void the user's authority to operate the equipment.

This equipment has been tested and found to comply with the limits for a Class B digital device, pursuant to part 15 of the FCC Rules. These limits are designed to provide protection against harmful interference in a residential installation. This equipment generates uses and can radiate radio frequency energy and, if not installed and used in accordance with the instructions, may cause harmful interference to radio communications.

However, there is no guarantee that interference will not occur in a particular installation. If this equipment does cause harmful interference to radio or television reception, which can be determined by turning the equipment off and on, the user is encouraged to try to correct the interference by one or more of the following measures:

- Reorient or relocate the receiving antenna.
- Increase the separation between the equipment and receiver.
- Connect the equipment into an outlet on a circuit different from that to which the receiver is connected.
- Consult the dealer or an experienced radio/TV technician for help.

**NOTE:** The manufacturer is not responsible for any radio or TV interference caused by unauthorized modifications to this equipment. Such modifications could void the user's authority to operate the equipment. The device has been evaluated to meet general RF exposure requirement. The device can be used in portable exposure condition without restriction.

EU declaration of conformity is available at the following internet address: <https://support.switch-bot.com/hc/en-us/articles/5114648510359-DECLARATION-OF-CONFORMITY>



Manufacturer:


Woan Technology (Shenzhen) Co., Ltd.

Address: Room 1101, Qiancheng Commercial Center, No. 5 Haicheng Road, Mabu Community, Xixiang Subdistrict, Bao'an District, Shenzhen, Guangdong, P.R.China, 518100

[www.switch-bot.com](http://www.switch-bot.com)

V2.0-2204

## Documents / Resources

	<a href="#">SwitchBot Bot-SMS-EN-2205 SwitchBot Bot</a> [pdf] User Manual Bot-SMS-EN-2205 SwitchBot Bot, Bot-SMS-EN-2205, SwitchBot Bot, Bot
---	---

## References

- [S SwitchBot Official Website - Your Simple Switch to a Smart Home – SwitchBot International](#)