



SwitchBot Blind Tilt Brings Programmable User Manual

[Home](#) » [SwitchBot](#) » SwitchBot Blind Tilt Brings Programmable User Manual 

Contents

- [1 SwitchBot Blind Tilt Brings Programmable](#)
- [2 Package Contents](#)
- [3 List of Components](#)
- [4 Safety Information](#)
- [5 Installation](#)
- [6 Attach the coupling onto the adapter](#)
- [7 Precautions](#)
- [8 Battery Replacement](#)
- [9 Resetting Factory Settings](#)
- [10 Troubleshooting](#)
 - [10.1 Specifications](#)
 - [10.2 Warranty Conditions](#)
- [11 Documents / Resources](#)
 - [11.1 References](#)
- [12 Related Posts](#)

SwitchBot

SwitchBot Blind Tilt Brings Programmable



Specifications

- Type-C Charging Port
- Cord Holder Spring Tab
- Slide Switch
- Indicator Light & Light Sensor
- Pair Device Button Reset Button
- Coupling Gear Spring Buckle
- Solar Panel Light Sensor

Preparation

- A smartphone or tablet using Bluetooth 4.2 or later.
- The latest version of our app, downloadable via the Apple App Store or Google Play Store.
- A SwitchBot account, you can register via our app or sign in to your account directly if you already have one.

Please note: If you intend to use the Cloud Service feature, you will need a SwitchBot Hub Mini (sold separately).
iOS 11.0+ / Android OS 5.0+

Safety Information

- Keep this product away from heat and humidity, and make sure it does not come into contact with fire or water.
- This product is a precision-based electronic product, please avoid physical damage.
- Do not attempt to disassemble, repair, or modify the product.

- Do not use the product where wireless devices are not allowed.

Dear customer,

Thank you for purchasing our product. Please read the following instructions carefully before first use and keep this user manual for future reference. Pay particular attention to the safety instructions. If you have any questions or comments about the device, please contact the customer line.

www.alza.co.uk/kontakt

☎ +44 (0)203 514 4411

Importer Alza.cz a.s., Jankovcova 1522/53, Holešovice, 170 00 Prague 7, www.alza.cz

Please read this manual carefully before using your device.

Package Contents



Main Unit x 1



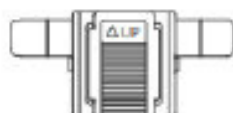
Solar Panel (Blind Tilt) x 1



Open Flex Coupling x 1



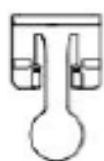
Mounting Base A x 1



Mounting Base B x 1



Base Cover x 1



Card Holder x 1



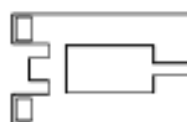
Adapter with Adhesive x 4
(S/M/L/XL)



User Manual x 1



Measurement Paper
Tape x 1



Alignment Card x 1



Adhesive Sticker x 2



Wet Wipe x 1



Type-C Power Cable x 1

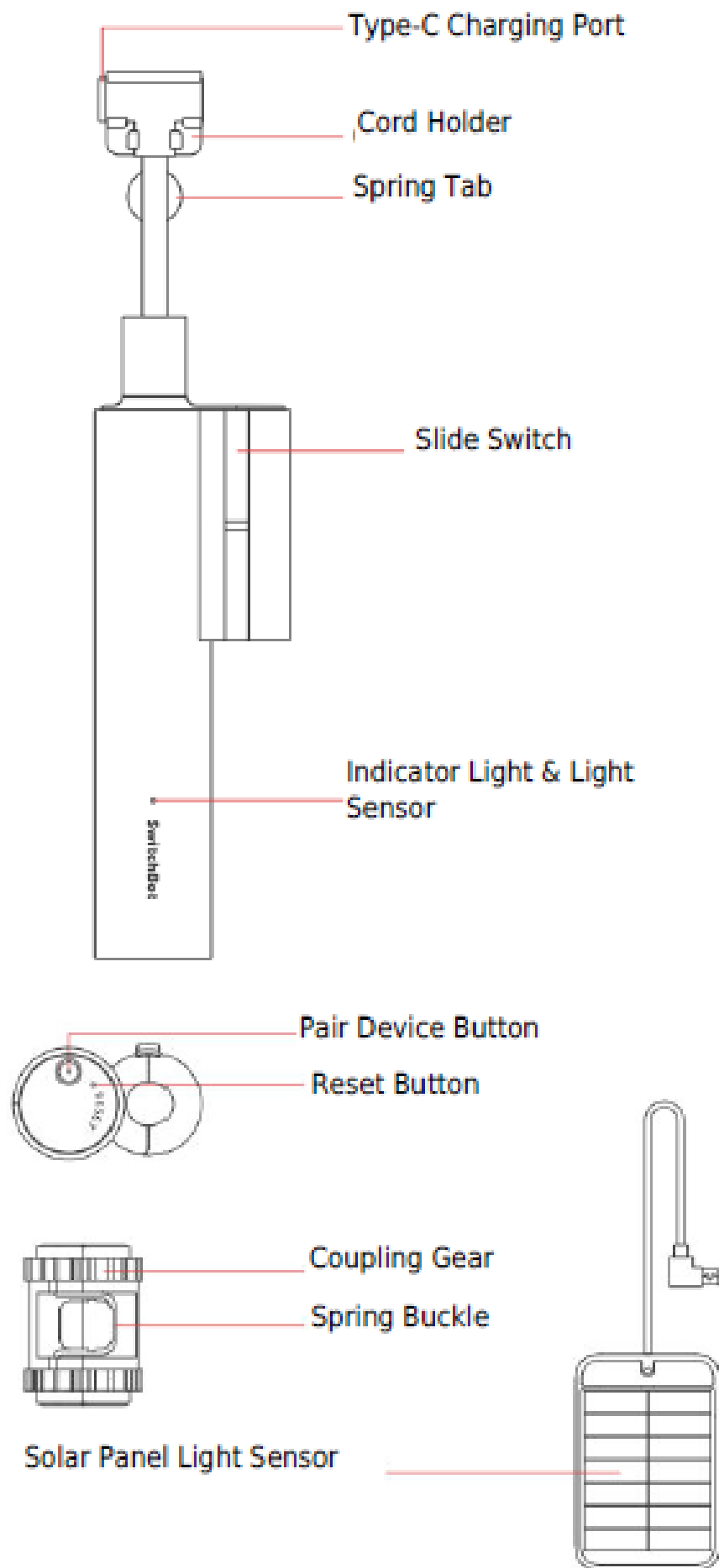


Ejection Pin x 1



Spare Double-sided Tape (For Mounting
Base A) x 1

List of Components



You will need:

- A smartphone or tablet using Bluetooth 4.2 or later.
- The latest version of our app, downloadable via the Apple App Store or Google Play Store.
- A SwitchBot account, you can register via our app or sign in to your account directly if you already have one.

Please note: If you intend to use the Cloud Service feature, you will need a SwitchBot Hub Mini (sold separately).



iOS 11.0+



Android OS 5.0+

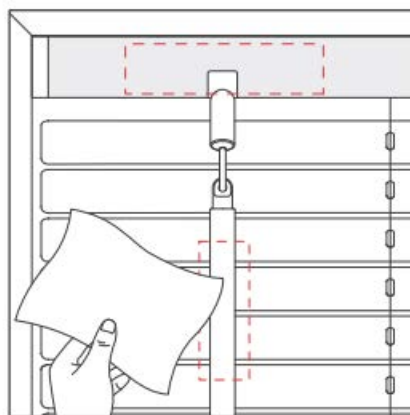
Safety Information

- Keep this product away from heat and humidity, and make sure it does not come into contact with fire or water.
- This product is a precision-based electronic product, please avoid physical damage.
- Do not attempt to disassemble, repair, or modify the product.
- Do not use the product where wireless devices are not allowed.

Installation

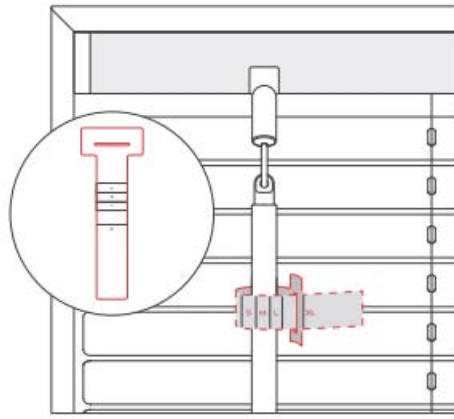
1. Step 1: Add your Blind Tilt to our app

Open the SwitchBot app and sign into your account. Tap “+” at the top right of the home page, find the Blind Tilt icon and select, then follow the instructions to add your device.



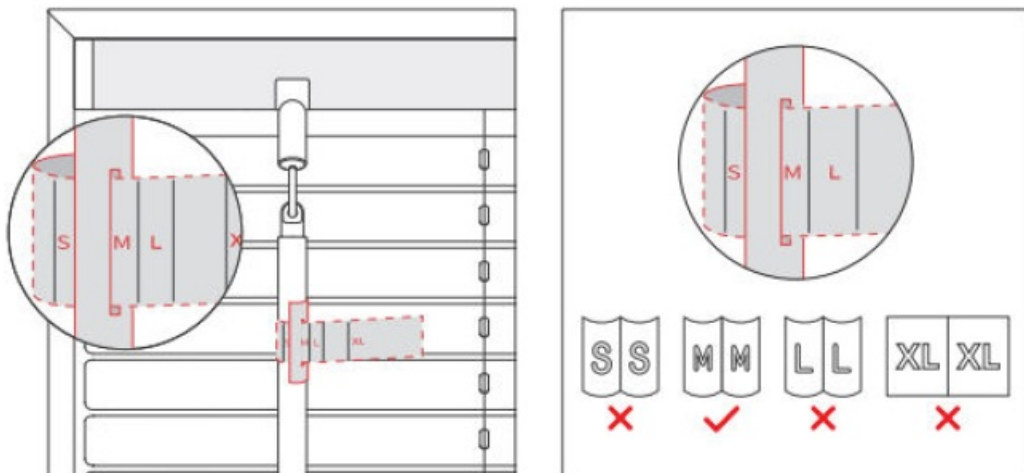
2. Step 2: Install onto your blinds

To ensure your Blind Tilt holds firmly on your blinds, use the wet wipe provided or neutral detergent to clean the headrail and the blind wand. Dirt or dust will affect adhesion and may cause dropping at a later time.

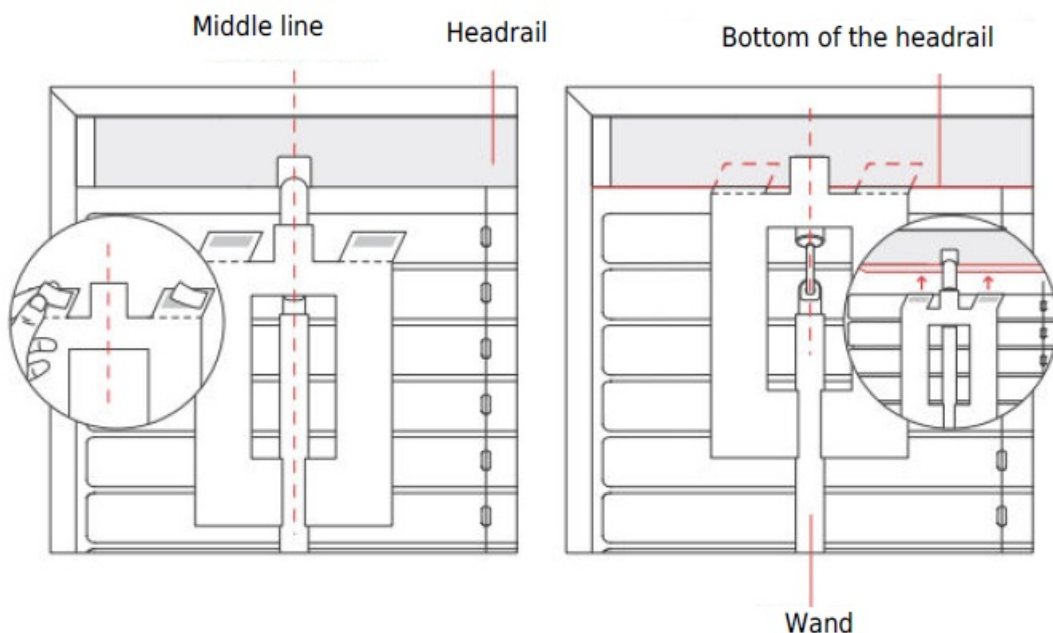


Use the measurement paper tape to determine an adapter for your blind wand

1. Wrap the measurement paper tape around your blind wand and tuck the narrower end of the paper tape into the gap on the other end. Slide the narrower end through the gap so the paper tape tightly fits the wand. Now check which size the marks on the paper indicate – S, M, L or XL.



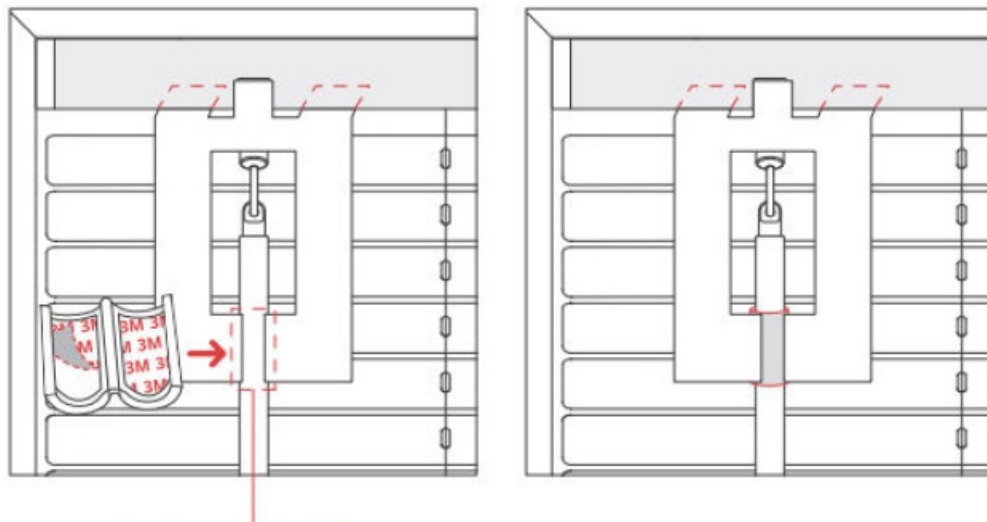
2. Select the adapter of the right size according to the result above.



Install the mounting base and attach the adapter to your blind wand using the alignment card

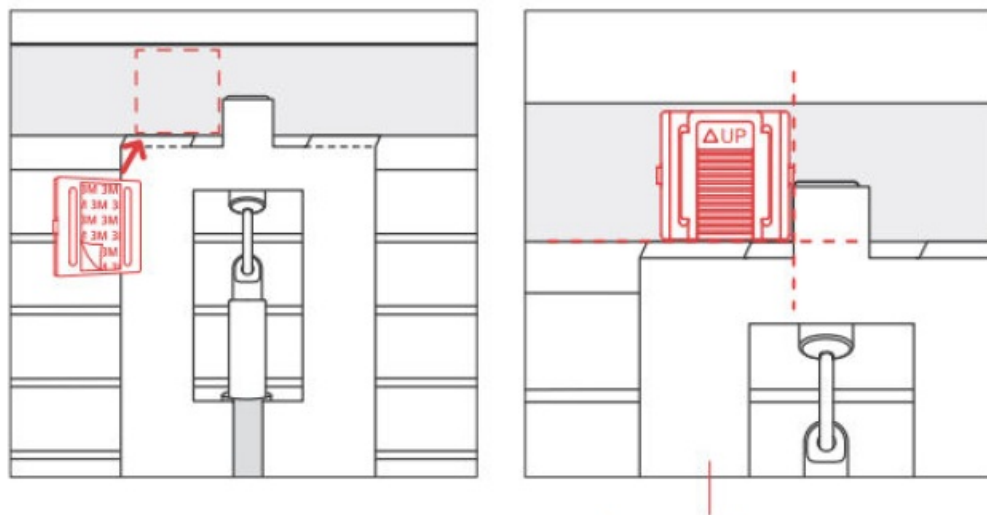
Please note: The alignment card provided is an essential tool to help determine the position of the mounting base and adapter.

1. Align the middle line on the alignment card with your blind wand. Then stick the two folded parts with adhesive to the bottom of the headrail.



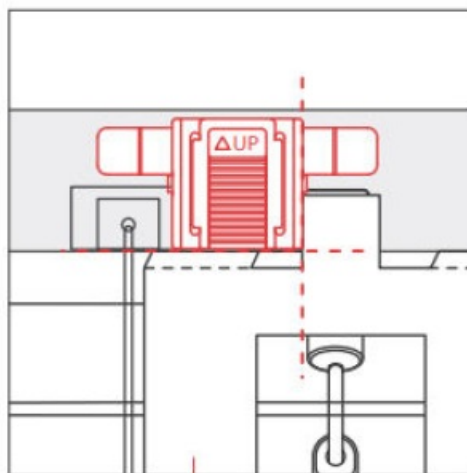
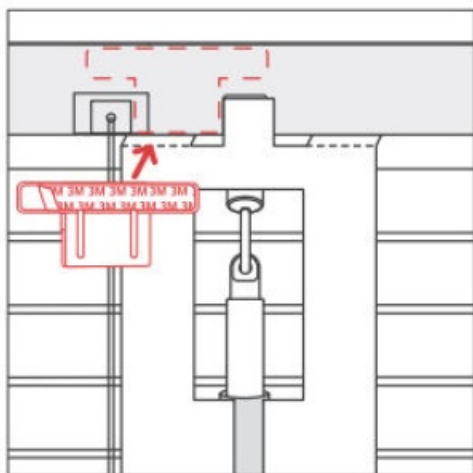
Position of the adapter

2. The gap at the middle bottom of the alignment card corresponds to where the adapter should be on the wand. Peel off the inner liner of the adapter and wrap it around your blind wand. Hold and pinch it for around 30 seconds.



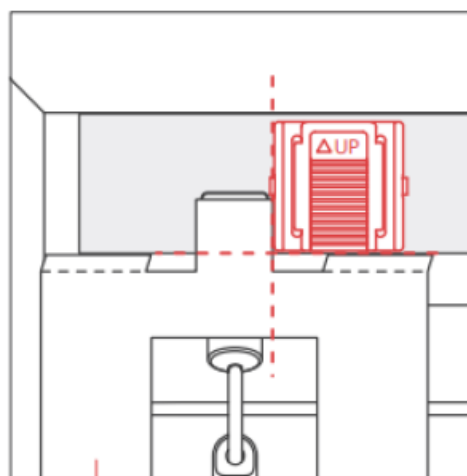
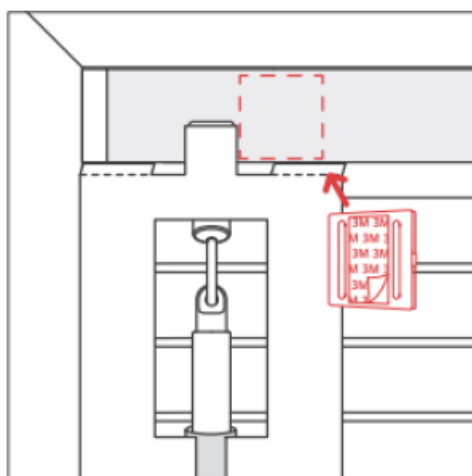
Remove after use

3. Select a mounting base that suits your blinds and stick it to the headrail where the alignment card indicates. We provide two types of mounting base. We recommend installing on the left using mounting base A in most cases.



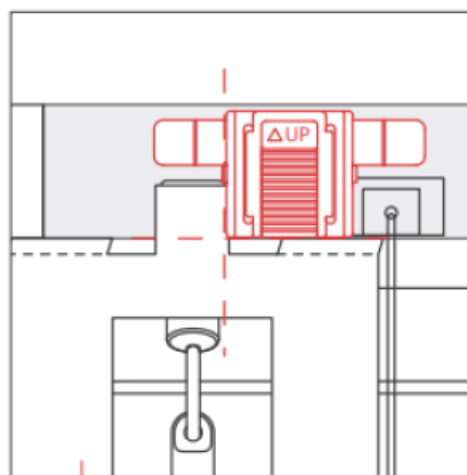
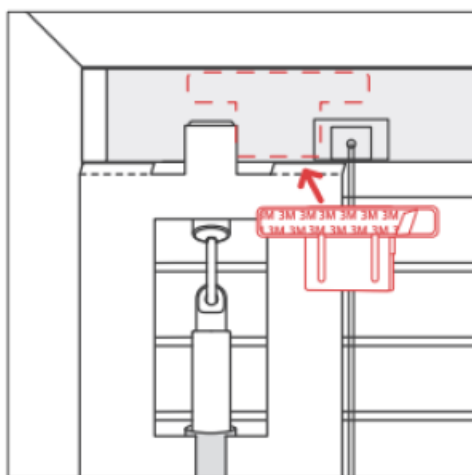
Remove after use

- Option 1: stick mounting base A on the left (recommended).



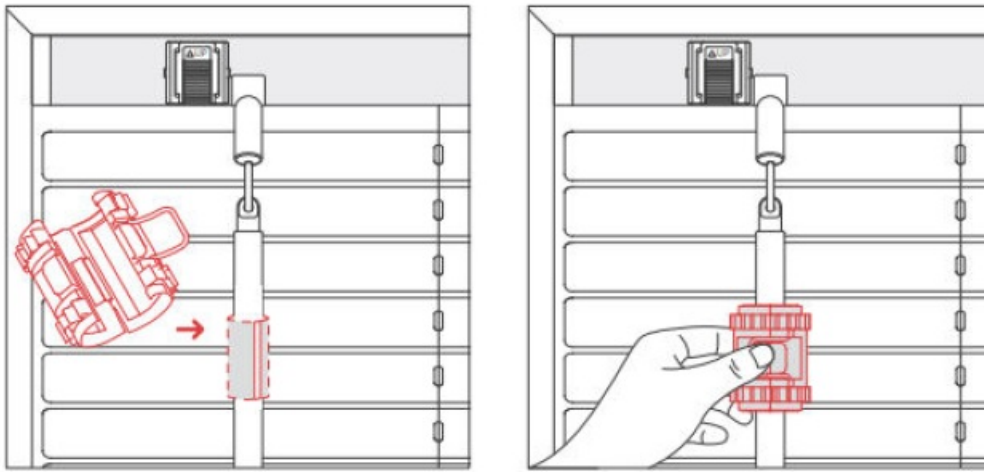
Remove after use

- Option 2: If there is a lift cord close to your blind wand on the left, select mounting base B and stick it in between.

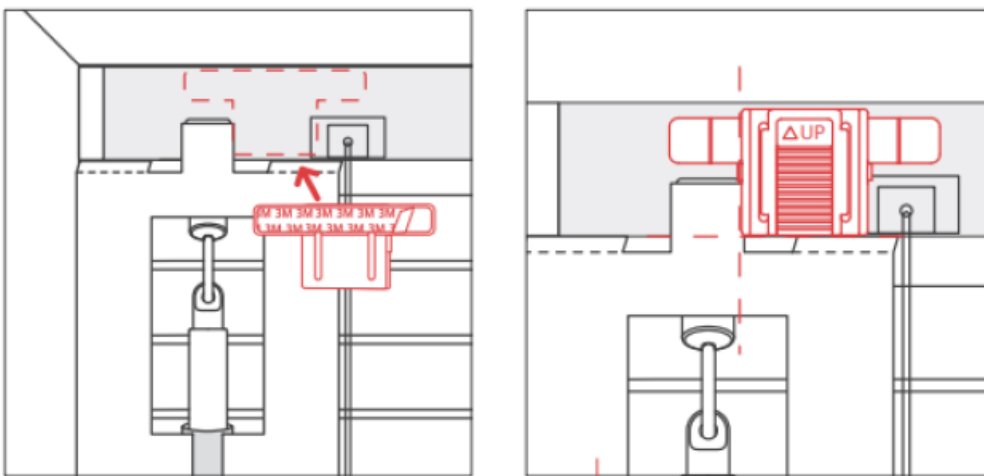


Remove after use

- Option 3: If there is not enough space on the left, stick mounting base A on the right.



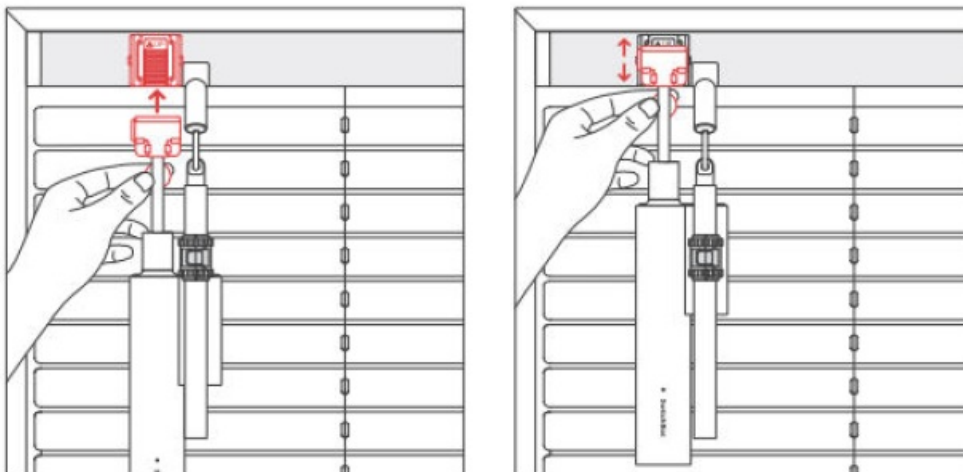
4. Option 4: If there is not enough space on the left and there is also a lift cord close to your blind wand on the right, select mounting base B and stick it in between.



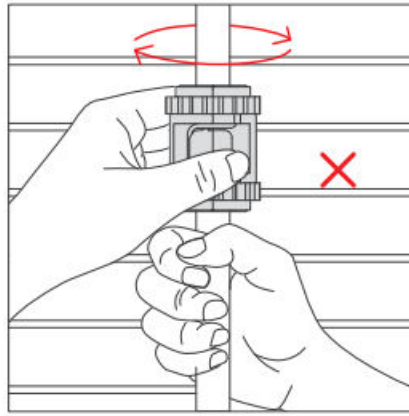
Remove after use

Attach the coupling onto the adapter

1. Open the coupling and attach it onto the adapter, the pinch and fasten the spring buckle.



2. Twist the coupling against the wand and make sure there is no relative sliding between the coupling and the adapter.

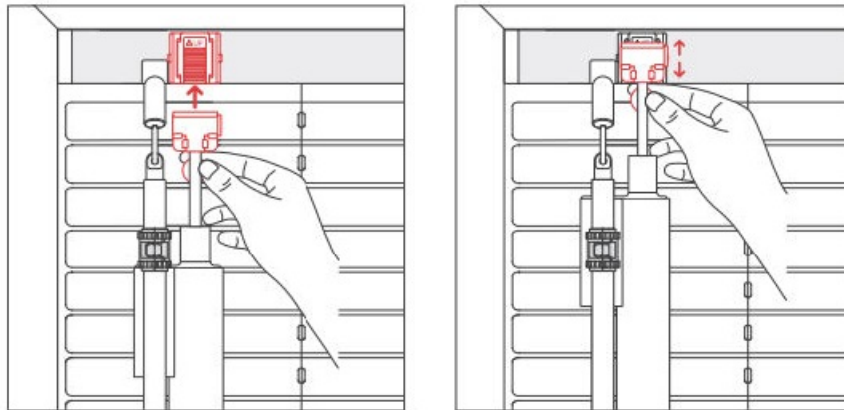


Note: If the coupling slides over the adapter when you twist it, use the measurement paper tape to measure your blind wand again and replace with a more suitable adapter.

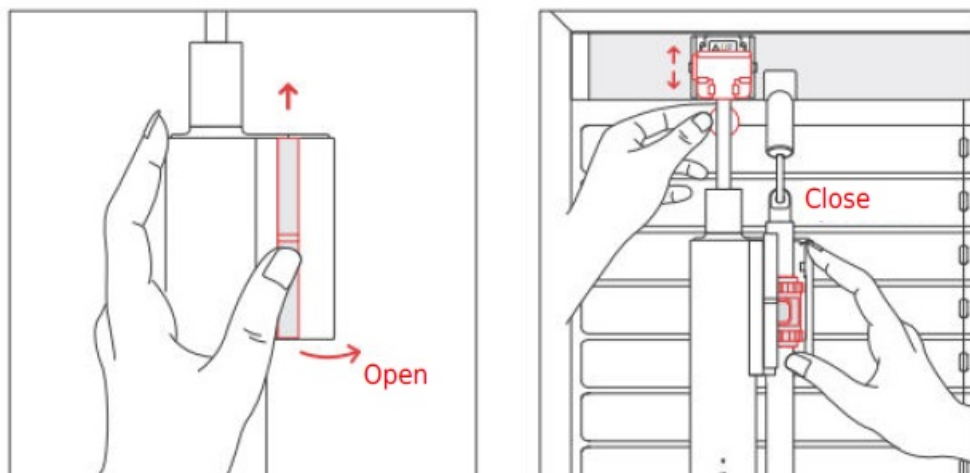
Install the main unit of your Blind Tilt onto the wand

Mounting base on the left:

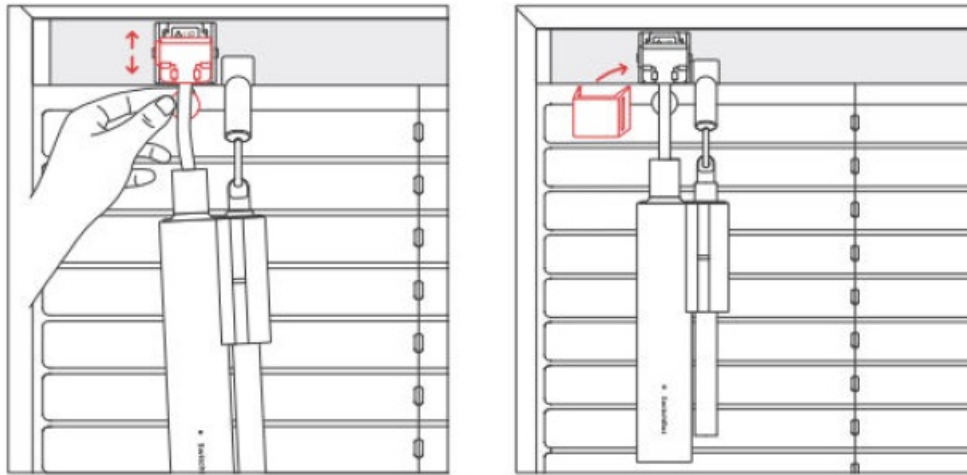
1. Pinch the spring tab on the cord holder and slide the cord holder upwards to fit into the mounting base.



2. Push the slide switch on the main unit upwards to open the case.
3. Align the gears on the coupling and inside the main unit, then close the main unit case. (Slide the cord holder up or down to adjust the position of main unit if you have difficulty aligning the gears.)

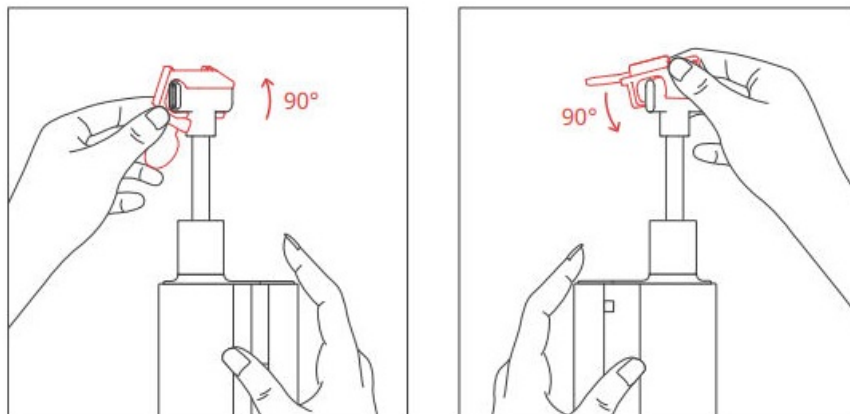


4. Check if your blind wand is perpendicular to the ground. If not, pinch the spring tab to slide the cord up and down to adjust the wand's tilt angle. Finally use the base cover to cover the mounting base.

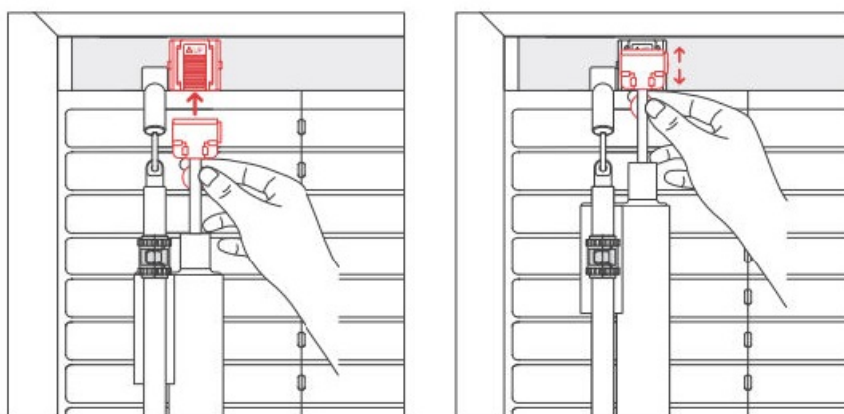


Mounting base on the right

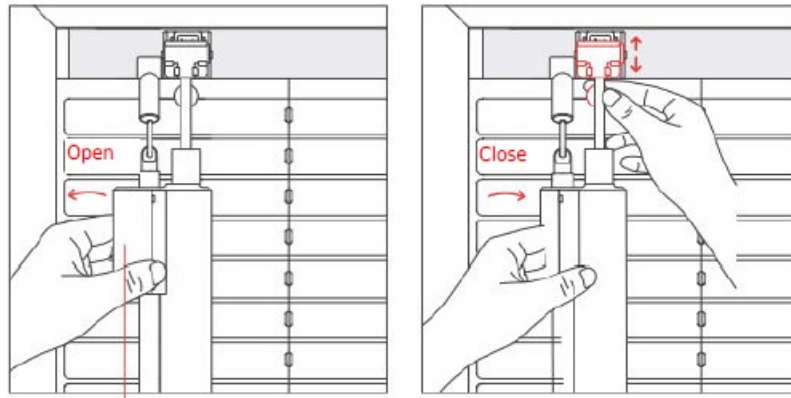
1. Remove the cord holder from the Type-C port (turn 90° upwards from the bottom to remove), then install it back on from the other side (turn 90° downwards from the top to install back on). Now the Type-C port should be facing right.



2. Pinch the spring tab to slide the cord holder from the bottom to fit into the mounting base.

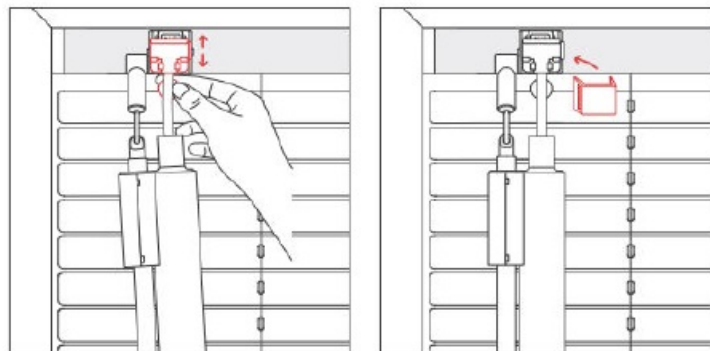


3. Push the slide switch upwards to open the main unit case. Align the gears on the coupling and inside the main unit, then close the main unit case. (Slide the cord holder up or down to adjust the position of main unit if you have difficulty aligning the gears.)



Main unit case

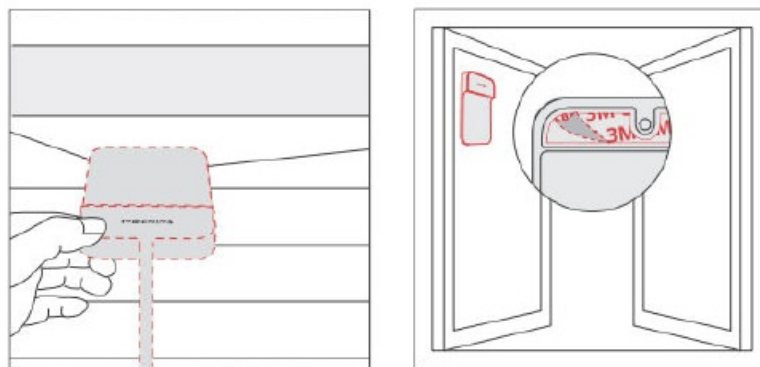
4. Check if your blind wand is perpendicular to the ground. If not, pinch the spring tab to slide the cord up and down to adjust the wand's tilt angle. Finally, use the base cover to cover the mounting base.



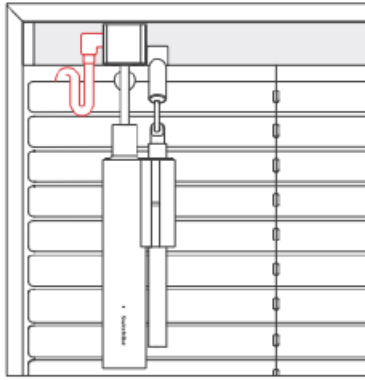
Stick Solar Panel onto the window (optional)

Note: Solar Panel is optional since Blind Tilt is battery powered.

1. Stick Solar Panel onto the inner side of your window with its front facing outside.
Select an appropriate position near the main unit so that the cord connecting Solar Panel will not be pulled when you open the window.

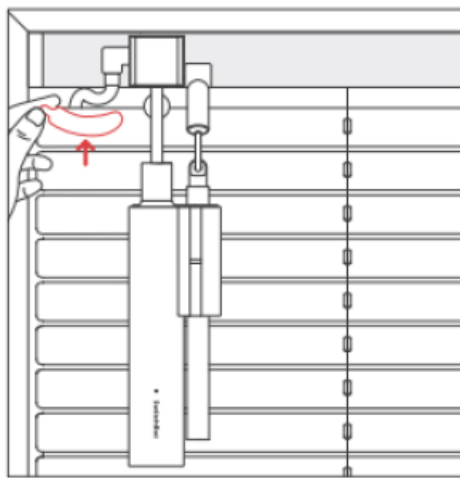


2. Pass the cable of Solar Panel through the gap between the headrail and the top slat, then connect the cable to the main unit.



Note: Make sure the cable of Solar Panel passes from the gap above the top slat, otherwise your device may not work properly after installation.

3. Organize the cord of Solar Panel so that it does not affect the movement of the slats. Then fix the cord at the bottom of the headrail using the adhesive sticker.



Calibration

After you have added and installed your SwitchBot Blind Tilt, you will need to calibrate it to ensure it works correctly. Please follow the instructions in our app and make sure that the actual movement of your blind slats is the same as the animation in our app. Recalibration is needed each time you remove and reinstall the main unit. You can choose to recalibrate your Blind Tilt whenever you want on its Setting page.

Precautions

1. This product is not a toy. Keep children away from this product.
2. This product is only for indoor use. Please do not use this product in humid environment or outdoors.
3. Do not expose this product to liquids or operate with wet hands.
4. Do not place this product near heat sources in a closed environment.
5. Do not attempt to disassemble, modify or repair this product, unless by an authorized technician.
6. This product is designed to improve the convenience of home life. We do not account for any risks or property loss as possible results of not following this user manual.

Battery Replacement

It takes about 6.5 hours to fully charge your device battery and one full charge could last for about 10 months. You may also harness the sunlight to charge using the Solar Panel provided.

1. Use a 5V 1A adapter to charge your device.
2. Battery life is tested under conditions of opening and closing a 1.8 x 1.8m blind with a 0.6 kgf.cm wand twice a day under 25°C. Actual battery life may vary depending on different conditions.
3. Using Solar Panel to charge requires a level 6 illuminance level at least.

Note: Solar charging can get you unlimited battery life of your device. Under extreme conditions, like continuous cloudy days for years, the Solar Panel and the battery can last at least 3 years before next charging.

Resetting Factory Settings

Use the ejection pin to poke the Reset button once to reset your device to factory settings. Recalibration is needed after resetting.

Firmware Upgrades

In order to improve user experience, we will regularly release firmware updates to introduce new functions and solve any software defects that may occur during usage. When a new firmware version is available, we will send an upgrade notification to your account via our app. When upgrading, please make sure your product has sufficient battery and make sure your smartphone is withing range to prevent interference.

Troubleshooting

Please visit our website or scan the QR code below for more information. <https://support.switch-bot.com/hc/en-us/categories/7566387770903>



Specifications

Colour	White
Material	ABS+PC, UV-resistant coating
Size	48.8 x 29.2 x 210mm (1.9 x 1.1 x 8.3 in)
Weight	130g (4.6 oz.)
Power	Type-C, DC 5V = 1A; 2000mAh lithium battery
Battery Life	Approx. 10 months or almost unlimited with the Solar Panel
Operating Temperature	-10°C to 45°C (14°F to 113°F)
Operating Humidity	10 0 to 95 % RH
Torque Strength	≤ 1 kgf.cm
Network Connectivity	Bluetooth 5.0
System Requirements	iOS 11.0+, Android OS 5.0+

Warranty Conditions

A new product purchased in the Alza.cz sales network is guaranteed for 2 years. If you need repair or other services during the warranty period, contact the product seller directly, you must provide the original proof of purchase with the date of purchase.

The following are considered to be a conflict with the warranty conditions, for which the claimed claim may not be recognized:

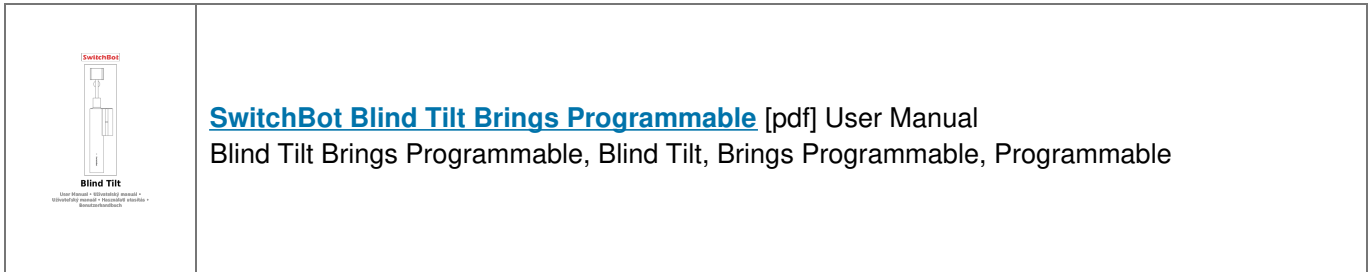
- Using the product for any purpose other than that for which the product is intended or failing to follow the instructions for maintenance, operation, and service of the product.
- Damage to the product by a natural disaster, the intervention of an unauthorized person or mechanically through the fault of the buyer (e.g., during transport, cleaning by inappropriate means, etc.).
- Natural wear and aging of consumables or components during use (such as batteries, etc.).
- Exposure to adverse external influences, such as sunlight and other radiation or electromagnetic fields, fluid intrusion, object intrusion, mains overvoltage, electrostatic discharge voltage (including lightning), faulty supply or input voltage and inappropriate polarity of this voltage, chemical processes such as used power supplies, etc.
- If anyone has made modifications, modifications, alterations to the design or adaptation to change or extend the functions of the product compared to the purchased design or use of non-original components.

WEEE









This product must not be disposed of as normal household waste in accordance with the EU Directive on Waste Electrical and Electronic Equipment (WEEE – 2012/19 / EU). Instead, it shall be returned to the place of purchase or handed over to a public collection point for the recyclable waste. By ensuring this product is disposed of correctly, you will help prevent potential negative consequences for the environment and human health, which could otherwise be caused by inappropriate waste handling of this product. Contact your local authority or the nearest collection point for further details. Improper disposal of this type of waste may result in fines in accordance with national regulations.



Documents / Resources



References

-  [Alza.cz – rychlý a pohodlný nákup odkudkoliv | Alza.cz](#)
-  [kgf.cm - kgf Resources and Information.](#)
-  [Alza | Alza.co.uk](#)
-  [Alza.cz – rychlý a pohodlný nákup odkudkoliv | Alza.cz](#)
-  [Alza.cz](#)
-  [alza.de](#)
-  [alza.hu](#)
-  [alza.sk](#)
- [User Manual](#)

[Manuals+](#), [Privacy Policy](#)

This website is an independent publication and is neither affiliated with nor endorsed by any of the trademark owners. The "Bluetooth®" word mark and logos are registered trademarks owned by Bluetooth SIG, Inc. The "Wi-Fi®" word mark and logos are registered trademarks owned by the Wi-Fi Alliance. Any use of these marks on this website does not imply any affiliation with or endorsement.