




SwitchBot 2207 Smart Keypad Lock User Manual

[Home](#) » [SwitchBot](#) » SwitchBot 2207 Smart Keypad Lock User Manual 

SwitchBot 2207 Smart Keypad Lock User Manual

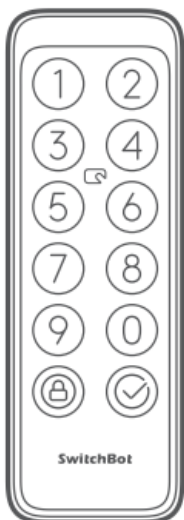


Contents

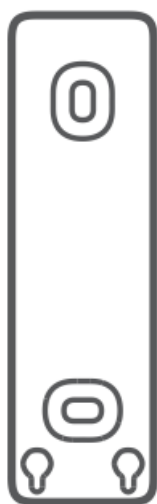
- 1 Package Contents
- 2 List of Components
- 3 Preparation
- 4 iOS 11.0+ Android OS 5.0+ Getting Started
- 5 Safety Information
- 6 Installation
- 7 Install with Adhesive Tape
- 8 Keypad Removal Illustration
- 9 Precautions
- 10 Device Status Description
- 11 Passcode Unlock
- 12 NFC Card Unlock
- 13 Battery Replacement
- 14 Un pairing
- 15 Lost Device
- 16 Firmware Upgrades
- 17 Troubleshooting
- 18 Specifications
- 19 Disclaimer
- 20 Warranty
- 21 Contact & Support
- 22 CE/UKCA Warning
- 23 FCC Warning
- 24 IC Warning
- 25 Documents / Resources
 - 25.1 References
- 26 Related Posts

Package Contents

- Switch Bot Keypad × 1



- Mounting Plate × 1



- Alignment Sticker × 1



- Double-sided Adhesive Tape × 1



- CR123A Battery × 2



- User Manual × 1



- Wet Wipe × 1



- Ejection Pin × 1



- Rubber Ring × 2



- Switch Bot Card × 1



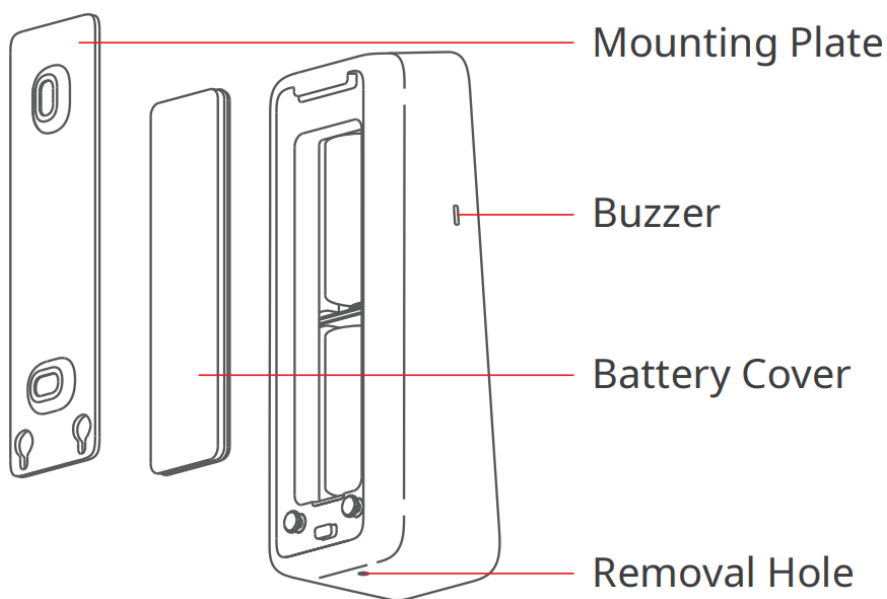
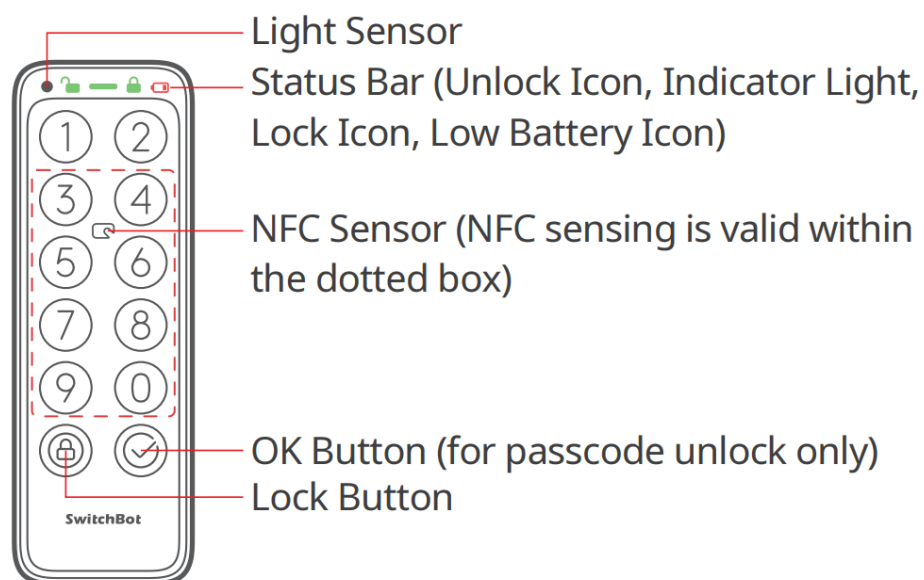
- Triangle Opener × 1



- Screw Kit (Two 3.5 × 25 mm [#6 × 1"] Screws, Two Expansion Bolts) × 1



List of Components



Preparation

You will need:

- A smartphone or tablet using Bluetooth 4.2 or later.
- The latest version of our app, downloadable via the Apple App Store or Google Play Store.
- A Switch Bot account, you can register via our app or sign in to your account directly if you already have one.

Please note: if you want to set unlock pass code remotely or receive notifications on your phone, you will need a Switch Bot Hub Mini (sold separately).

iOS 11.0+



Android OS 5.0+



Getting Started

1. Remove the battery cover and install the batteries. Make sure the batteries are installed in the right direction. Then put the cover back on.
2. Open our app, register an account and sign in.
3. Tap “+” at the top right of the Home page, find the Keypad icon and select, then follow the instructions to add your Keypad.

Safety Information

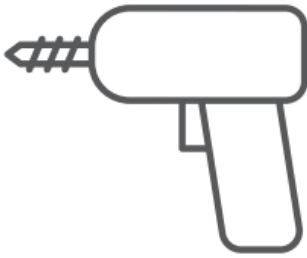
- Keep your device away from heat and humidity, and make sure it does not come into contact with fire or water.
- Do not touch or operate this product with wet hands.
- This product is a precision-based electronic product, please avoid physical damage.
- Do not attempt to disassemble, repair, or modify the product.
- Do not use the product where wireless devices are not allowed.

Installation

Method 1: Install with Screws

Before installation you will need:

- Electric Drill



- Rubber Hammer



- Pencil



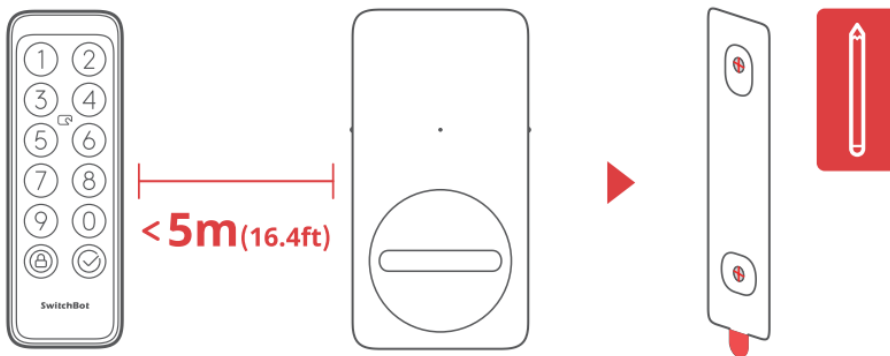
- Screwdriver



Step 1: Confirm Installation Position

Tips: To avoid repeatedly changing positions after installation and causing damage to your wall, we suggest that you add Keypad on our app first to see whether you can control the Lock via Keypad at the chosen position. Make sure your Keypad is installed within 5 meters (16.4 ft) from your Lock.

Add Keypad following the instructions on the app. After adding successfully, find a suitable position on the wall, attach SwitchBot Keypad to the chosen position with your hands, then check if you can lock and unlock SwitchBot Lock smoothly when using Keypad. If everything works correctly, place the alignment sticker to the position chosen and mark holes for screws using a pencil.



Step 2: Determine Drill Bit Size and Drill Holes

Tips: For outdoor usage, we recommend that you install with screws to prevent SwitchBot Keypad being moved without your permission. Concrete or other hard surfaces can be challenging for drilling. If you are not experienced with drilling into a particular type of wall, you may want to consider consulting a professional.

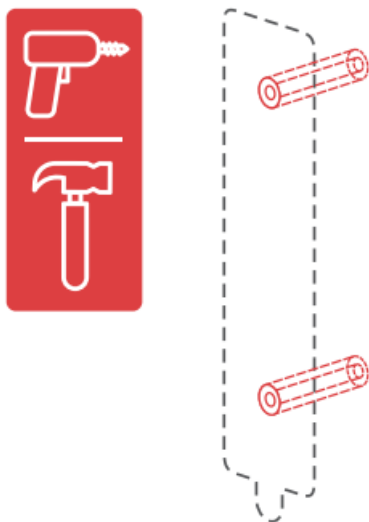
Prepare a suitably sized electric drill bit before drilling.

1. When installing on more rugged surfaces like concrete or brick:

Use an electric drill with the 6 mm (15/64") sized drill bit to drill holes at the marked positions, then use the rubber hammer to hammer the expansion bolts into the wall.

2. When installing on surfaces like wood or plaster:

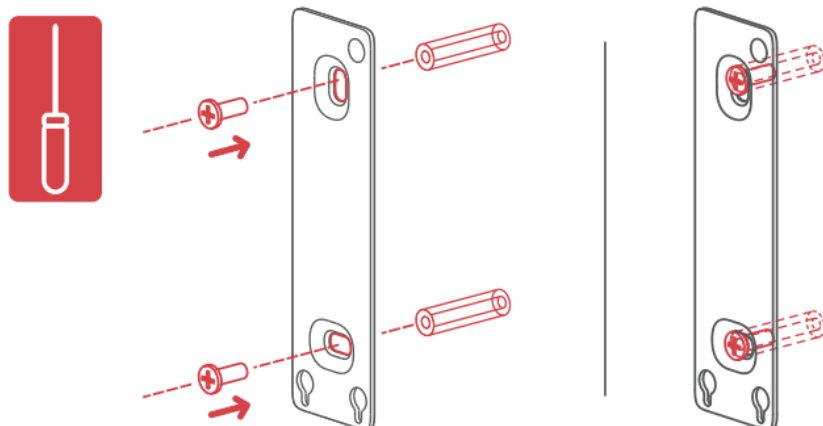
Use an electric drill with the 2.8 mm (7/64") sized drill bit to drill holes at the marked positions.



Step 3: Attach Mounting Plate to the Wall

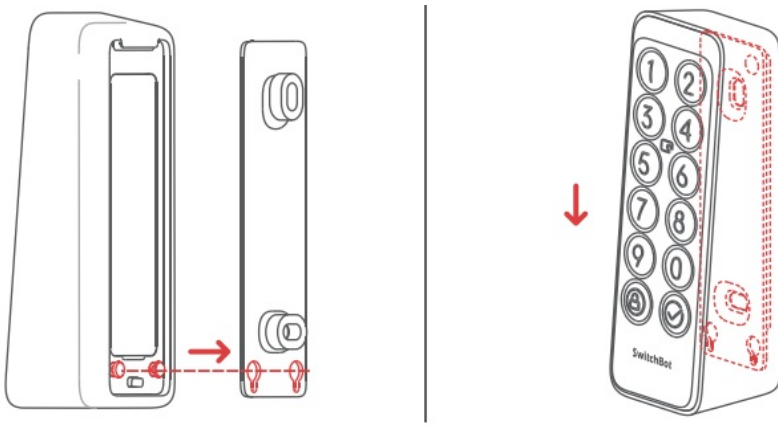
Tips: If the wall surface is uneven, you may need to place two rubber rings at the two screw holes at the back of the mounting plate.

Affix mounting plate to the wall using screws. Make sure the mounting plate is firmly attached, there should be no excess movement when you press either side.



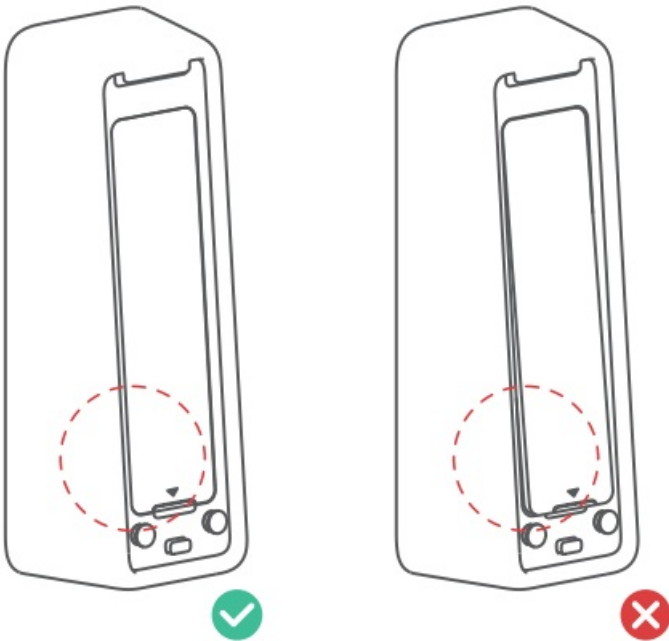
Step 4: Attach Keypad to Mounting Plate

Align the two metal round buttons at the back of your Keypad with the two round locating holes at the bottom of mounting plate. Then press and slide your Keypad downwards with pressure along the mounting plate. You will hear a click when it is firmly attached. Then press your Keypad from different angles using your hands to make sure it is stable.



If you've run into problems when attaching your Keypad to the mounting plate, please refer to the following solutions to solve the problem:

1. Check if the battery cover is properly clicked into place. The battery cover should cover the battery box perfectly and form a flat surface with its surrounding case parts.
Then try attaching your Keypad to the mounting plate again.
2. Check if the installation surface is uneven. An uneven surface may cause the mounting plate to be too closely mounted to the wall. If so, you may need to place two rubber rings at the screw holes at the back of the mounting plate to ensure there is a certain distance between the mounting plate and the wall surface.



Install with Adhesive Tape

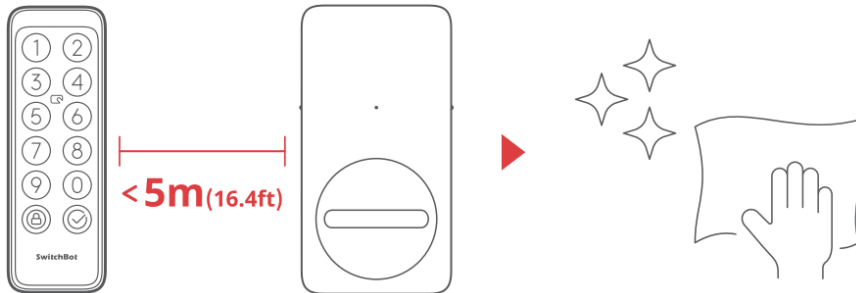
Step 1: Confirm Installation Position

Tips:

1. To avoid repeatedly changing positions after installation and causing damage to your wall, we suggest that you add Keypad on our app first to see whether you can control the Lock via Keypad at the chosen position. Make sure your Keypad is installed within 5 meters (16.4 ft) from your Lock.
2. 3M adhesive tape can only attach firmly to smooth surfaces like glass, ceramic tile and smooth door surface.

Please clean the installation surface first before installation. (We recommend you install with screws to prevent your Keypad being removed.)

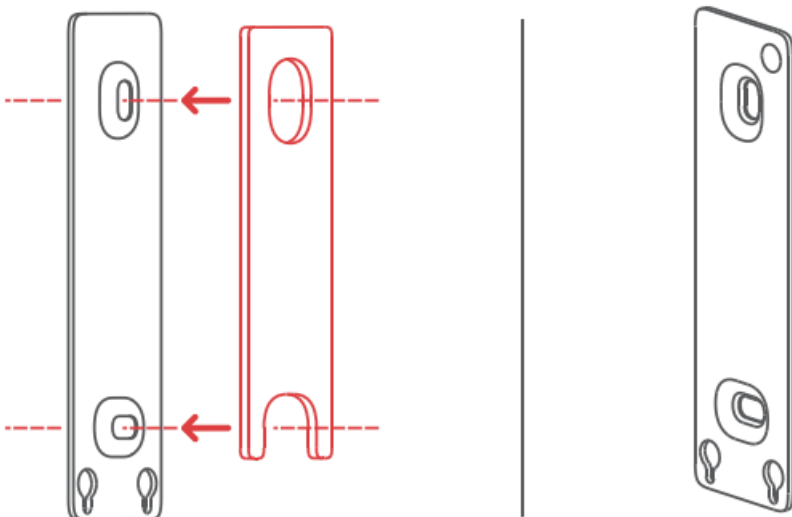
Add your Keypad following the instructions on our app. After adding successfully, find a suitable position on the wall, attach your Keypad to the position with your hands, then check if you can lock and unlock SwitchBot Lock smoothly using Keypad. If so, use pencil to mark the position.



Step 2: Attach Mounting Plate to the Wall

Tips: Make sure the installation surface is smooth and clean. Make sure the temperature of the adhesive tape and installation surface is higher than 0°C, otherwise the tape adhesion may decline.

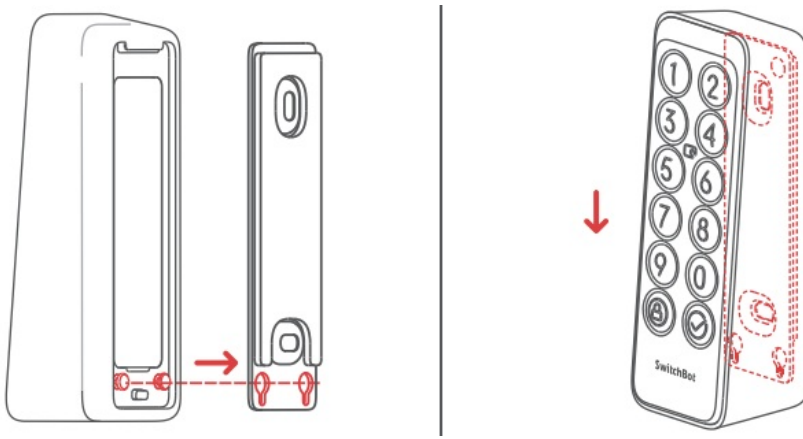
Attach adhesive tape to the back of mounting plate, then stick the mounting plate to the wall at the marked position. Press the mounting plate against the wall for 2 minutes to ensure it is firm.



Step 3: Attach Keypad to Mounting Plate

Tips: Make sure the mounting plate has been firmly attached to the wall before continuing.

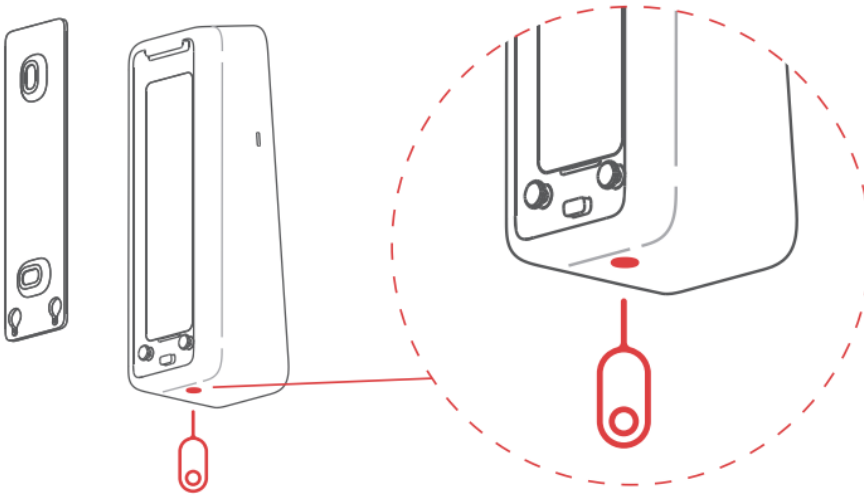
Align the two metal round buttons at the back of your Keypad with the two round locating holes at the bottom of mounting plate. Then press and slide your Keypad downwards with pressure along the mounting plate. You will hear a click when it is firmly attached. Then press your Keypad from different angles using your hands to make sure it is stable.



Keypad Removal Illustration

Tips: Do not remove Keypad with force as this may cause structural damage to the device.

Poke the ejection pin into the removal hole and hold with pressure, at the same time, pull the Keypad upwards to remove it.



Keypad Removal Alerts

- Removal alerts will be activated once Keypad is added to your SwitchBot account. Removal alerts will be triggered every time your Keypad is removed from the mounting plate.
- Users can remove alerts by entering the correct passcode or using NFC cards.

Precautions

- This product cannot control your Lock when it runs out the battery. Please check remaining battery via our app or the indicator on the device panel periodically, and make sure you replace the battery in time. Remember to bring a key out with you when the battery is low to prevent being locked outside.
- Refrain from using this product if an error occurs and contact SwitchBot Customer Service.

Device Status Description

Device Status	Description
Indicator light flashes green rapidly	Device is ready to set up
Indicator light flashes green slowly then goes off	OTA upgraded successfully
Red battery icon lights up and device beeps twice	Low battery
Green unlock icon lights up with a beep	Unlock successful
Green lock icon lights up with a beep	Lock successful
Indicator light flashes red twice and device beeps twice	Unlock/ lock failed
Indicator light flashes red once and unlock/lock icon flashes once with 2 beeps	Unable to connect to Lock
Indicator light flashes red twice and panel backlight flashes twice with 2 beeps	Wrong passcode entered 5 times
Indicator light flashes red and panel back light flashes rapidly with continuous beeps	Removal alert

Please visit support.switch-bot.com for detailed information.

Passcode Unlock

- **Amount of passcodes supported:** You can set up to 100 passcodes, including 90 permanent passcodes, temporary passcodes and one-time passcodes totally and 10 emergency passcodes. When the amount of passcodes added has reached the max. limit, you will need to delete existing passcodes to add new ones.
- **Passcode digit limit:** you can set a passcode of 6 to 12 digits.
- **Permanent passcode:** passcode that is valid forever.
- **Temporary passcode:** passcode that is valid within a set time period. (Time period can be set up to 5 years.)
One-time passcode: you can set a one-time passcode that is valid for from 1 to 24 hours.
- **Emergency passcode:** the app will send you notifications when emergency passcode is used to unlock.
- **Emergency unlock notifications:** you will only receive emergency unlock notifications when your Keypad is connected to a SwitchBot Hub.
- **Falsely triggered emergency unlock:** With the anti-peep technology, when the random digits you entered contain an emergency passcode, your Keypad will regard it as an emergency unlock first and will send you notifications. To prevent situations like this, please avoid entering digits that may compose an emergency passcode you've set.
- **Anti-peep technology:** You can add random digits before and after the correct passcode to unlock so people around you won't know what your real passcode is. You can enter up to 20 digits to include the real passcode.
- **Security settings:** Your Keypad will be disabled for 1 minute after 5 failed attempts to enter your passcode. Another failed attempt will disable your Keypad for 5 minutes and the disabled time will increase by double with following attempts. The max. disabled time is 24 hours, and each failed attempt after that will cause it to be disabled for another 24 hours.
- **Set pass code remotely:** requiring a SwitchBot Hub.

NFC Card Unlock

- **Amount of NFC cards supported:** You can add up to 100 NFC cards, including permanent cards and temporary cards. When the amount of NFC cards added has reached the max. limit, you will need to delete existing cards to add new ones.
- **How to add NFC cards:** Follow the instructions in the app and put a NFC card close to the NFC sensor. Do not move the card before it has been added successfully.
- **Security settings:** Your Keypad will be disabled for 1 minute after 5 failed attempts to verify a NFC card. Another failed attempt will disable your Keypad for 5 minutes and the disabled time will increase by double with following attempts. The max. disabled time is 24 hours, and each failed attempt after that will cause it to be disabled for another 24 hours.
- **NFC card lost:** if you've lost your NFC card, please delete the card as soon as possible in the app.

Battery Replacement

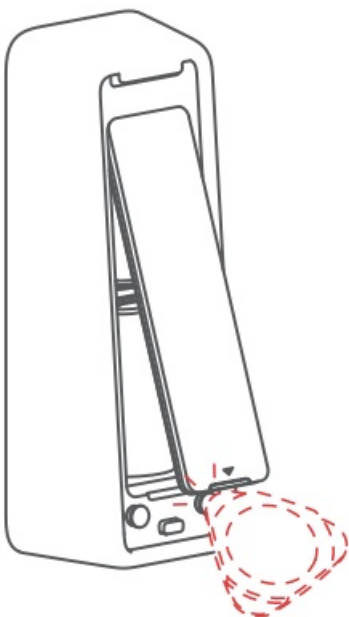
When your device battery is low, a red battery icon will appear and your device will emit a sound prompt indicating low battery every time you wake it up. You will also receive a notification via our app. Should this happen, please replace batteries as soon as possible.

How to replace batteries:

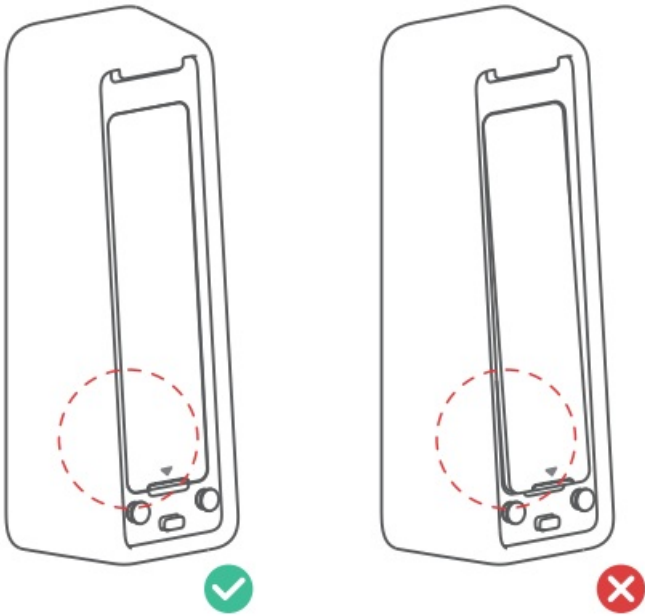
Note: The battery cover can not be easily removed due to the waterproof sealant added between the battery cover and the case. You will need to use the triangle opener provided.

- Remove the Keypad from the mounting plate, insert the triangle opener into the slot at the bottom of the battery cover, then press it with continuous force to pry the battery cover open. Insert 2 new CR123A batteries, put the cover back, then attach the Keypad back to the mounting plate.
- When putting the cover back, make sure it covers the battery box perfectly and forms a flat surface with its surrounding case parts.

Removing battery cover



Battery cover in place



Un pairing

If you are not using Keypad, please navigate to the Settings page of the Keypad to unpair it. Once Keypad is unpaired, it will be not able to control your SwitchBot Lock. Please operate with caution.

Lost Device

Should you lose your device, please navigate to the Settings page of the Keypad in question and remove pairing. You can pair the Keypad to your SwitchBot Lock again if you find your lost device.

Please visit support.switch-bot.com for detailed information.

Firmware Upgrades

In order to improve user experience, we will regularly release firmware updates to introduce new functions and solve any software defects that may occur during usage. When a new firmware version is available, we will send an upgrade notification to your account via our app. When upgrading, please make sure your product has sufficient battery and make sure your smartphone is within range to prevent interference.

Troubleshooting

Please visit our website or scan the QR code below for more information.

<https://support.switch-bot.com/hc/en-us/sections/4845758852119>



Specifications

Model: W2500010

Color: Black

Material: PC + ABS

Size: 112 × 38 × 36 mm (4.4 × 1.5 × 1.4 in.)

Weight: 125 g (4.4 oz.) (with battery)

Battery: 2 CR123A batteries

Battery Life: Approx. 2 years

Usage Environment: Outdoor and Indoor

System Requirements: iOS 11+, Android OS 5.0+

Network Connectivity: Bluetooth Low Energy

Operating Temperature: -25 °C to 66 °C (-13 °F to 150 °F)

Operating Humidity: 10 % to 90 % RH (noncondensing)

IP Ratings: IP65

Disclaimer

This product is not a security device and cannot prevent instances of theft from taking place. SwitchBot is not liable for any theft or similar accidents that may occur when using our products.

Warranty

We warrant to the original owner of the product that the product will be free from defects in materials and workmanship for a period of one year from the date of purchase. Please note that this limited warranty does not cover:

1. Products submitted beyond the original one-year limited warranty period.
2. Products on which repairs or modifying have been attempted.
3. Products subjected to falls, extreme temperatures, water, or other operating conditions outside the product specifications.
4. Damage due to natural disaster (including but not limited to lightning, flood, tornado, earthquake, or hurricane, etc.).
5. Damage due to misuse, abuse, negligence or casualty (e.g. fire).
6. Other damage that is not attributable to defects in the manufacture of product materials.
7. Products purchased from unauthorized resellers.
8. Consumable parts (including but not limited to batteries).
9. Natural wear of the product.

Contact & Support

Setup and Troubleshooting:

support.switch-bot.com

Support Email:

support@wondertechlabs.com

Feedback: If you have any concerns or problems when using our products, please send feedback via our app through the Profile > Feedback page.

CE/UKCA Warning

RF exposure information: The EIRP power of the device at maximal case is below the exempt condition, 20 mW specified in EN 62479: 2010. RF exposure assessment has been performed to prove that this unit will not generate the harmful EM emission above the reference level as specified in EC Council Recommendation(1999/519/EC).

CE DOC

Hereby, Woan Technology (Shenzhen) Co., Ltd. declares that the radio equipment type W2500010 is in compliance with Directive 2014/53/EU. The full text of the EU declaration of conformity is available at the following internet address:

support.switch-bot.com

UKCA DOC

Hereby, Woan Technology (Shenzhen) Co., Ltd. declares that the radio equipment type W2500010 is in compliance with UK Radio Equipment Regulations (SI 2017/1206). The full text of the UK declaration of conformity is available at the following internet address: support.switch-bot.com

This product can be used in EU member states and UK.

Manufacturer: Woan Technology (Shenzhen) Co., Ltd. Address: Room 1101, Qiancheng Commercial Center, No. 5 Haicheng Road, Mabu Community, Xixiang Subdistrict, Bao'an District, Shenzhen, Guangdong, P.R.China, 518100

EU Importer Name: Amazon Services Europe Importer Address: 38 Avenue John F Kennedy, L-1855 Luxembourg

Operation frequency (Max power)

BLE: 2402 MHz to 2480 MHz (3.2 dBm) Operation temperature: -25 °C to 66 °C NFC: 13.56 MHz

FCC Warning

This device complies with Part 15 of the FCC Rules.

Operation is subject to the following two conditions:

1. This device may not cause harmful interference.
2. This device must accept any interference received, including interference that may cause undesired operation.

NOTE: This equipment has been tested and found to comply with the limits for a Class B digital device, pursuant to part 15 of the FCC Rules. These limits are designed to provide reasonable protection against harmful interference in a residential installation.

This equipment generates uses and can radiate radio frequency energy and, if not installed and used in accordance with the instructions, may cause harmful interference to radio communications. However, there is no guarantee that interference will not occur in a particular installation. If this equipment does cause harmful

interference to radio or television reception, which can be determined by turning the equipment off and on, the user is encouraged to try to correct the interference by one or more of the following measures: – Reorient or relocate the receiving antenna.

- Increase the separation between the equipment and receiver.
- Connect the equipment into an outlet on a circuit different from that to which the receiver is connected.
- Consult the dealer or an experienced radio/TV technician for help.

NOTE: The manufacturer is not responsible for any radio or TV interference caused by unauthorized modifications to this equipment. Such modifications could void the user’s authority to operate the equipment.

FCC Radiation Exposure Statement

The device has been evaluated to meet general RF exposure requirement. The device can be used in portable exposure condition without restriction.

IC Warning

This device contains license-exempt transmitter (s)/receiver(s) that comply with Innovation, Science and Economic Development Canada’s license-exempt RSS(s). Operation is subject to the following two conditions:

1. This device may not cause interference.
2. This device must accept any interference, including interference that may cause undesired operation of the device.

www.switch-bot.com

V2.2-2207

SwitchBot

Documents / Resources



[SwitchBot 2207 Smart Keypad Lock](#) [pdf] User Manual
2207 Smart Keypad Lock, 2207, Smart Keypad Lock, Keypad Lock, Lock

References

- [SwitchBot Official Website - Your Simple Switch to a Smart Home – SwitchBot International](#)
- [User Manual](#)