



SWITCH WORKS 230-MAVR-SWE12 Can Am Maverick Switcher Box Mounting Kit Instruction Manual

[Home](#) » [SWITCH WORKS](#) » SWITCH WORKS 230-MAVR-SWE12 Can Am Maverick Switcher Box Mounting Kit Instruction Manual 

Contents

- [1 SWITCH WORKS 230-MAVR-SWE12 Can-Am Maverick Switcher Box Mounting Kit](#)
- [2 PARTS CONTENTS](#)
- [3 INSTALLATION](#)
- [4 SWITCH Works Brain Module Installation](#)
- [5 Documents / Resources](#)
 - [5.1 References](#)
- [6 Related Posts](#)



SWITCH WORKS 230-MAVR-SWE12 Can-Am Maverick Switcher Box Mounting Kit



WARRANTY INFORMATION

ALL SWITCH Works Electronics are covered by a limited 1-year warranty against defects in material or workmanship. Contact SSV Works for further warranty information. Please read and understand these instructions completely before installation to avoid possible injury or damage to the accessory or vehicle.

PARTS CONTENTS



*MAV R Controller, Push-In Dash Panel
[B-D3363]*



*MAV R Brain Module Bracket
[B-MB3386]*



*Hex Head M6x16mm Screw & Washer
(x2) [B-HPM616-2]*



*M5x0.8x10, Screws (x4)
[B-S1158]*



*4-40x0.375 Fine Thread
Cutting Screw (x4)
[B-HP3356]*

INSTALLATION

Please read and understand these instructions completely before installation to avoid possible injury or damage to the accessory or vehicle.

WARRANTY INFORMATION

All SSV Works enclosures are covered by a limited lifetime warranty against defects in material or workmanship. All SSV Works Electronics are covered by a limited 1-year warranty against defects in material or workmanship. Labor for the replacement of defective components is not covered. Contact SSV Works for further warranty information.

TOOLS NEEDED FOR INSTALLATION

- T30, T40 Torx Driver – 13mm wrench
- Phillips Screw Driver – Plastic Pry Tool

PANELS AND DASH DISASSEMBLY



- A. Mount the 15-button controller to the Mav R Push-In dash panel using the provided (4) 4-40x0.375 thread-cutting screws [B-HP3356]
- B. Remove the rocker switch panel using a plastic pry tool.



- C. Remove the driver-side center dash side panel. It is held by clips.
- D. Run the cable towards the bottom of the dash. Line up the bottom side of the controller to the dash opening and push in the top to lock it in place.

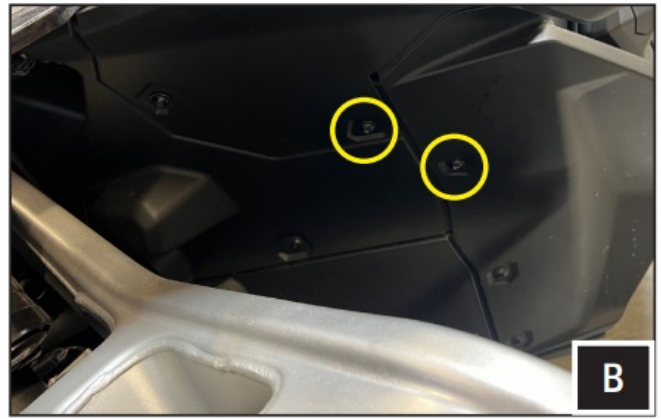
SWITCH Works Brain Module Installation



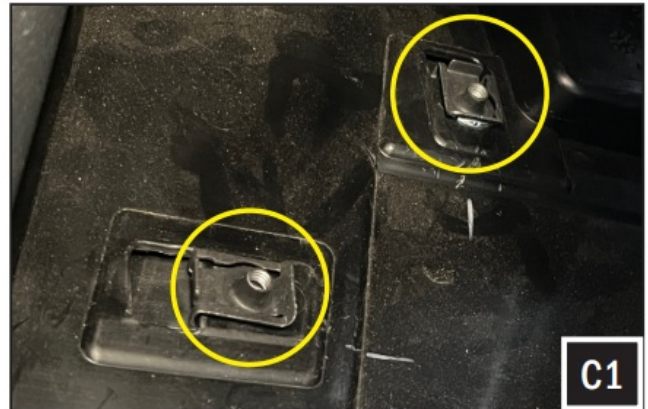
Completed installation of 15-Button Controller.

TOOLS NEEDED FOR INSTALLATION

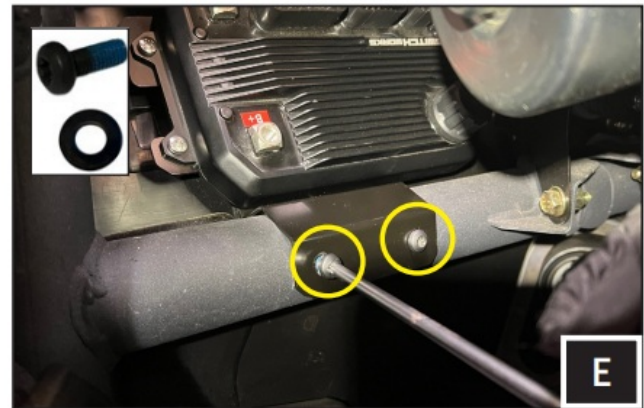
Phillips Screw Driver – T-30 Torx Driver



- Mount the ALPHA12 Brain module to the Mav R brain module bracket using (4) M5x10mm Phillips screws [B-S1158].



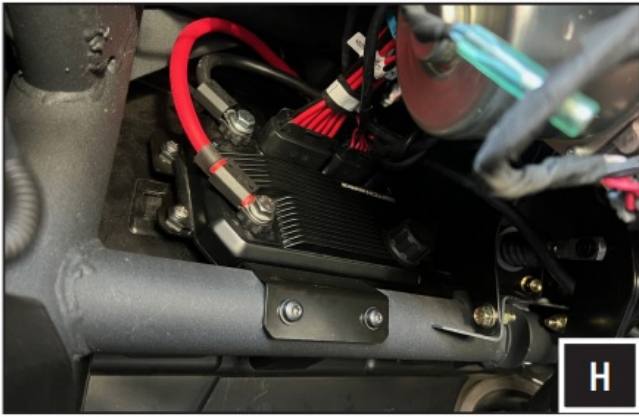
- Remove the (2) factory T-30 screws, circled above, on the driver's side wheel well liner.



- Remove the (2) factory U-Nuts that were used to fasten the (2) bolts removed in step B.



- It might be easier to remove the (2) U-Nuts from inside the vehicle.



- While holding the ALPHA12 brain and bracket with your right hand, use your left hand to screw in the (2) factory bolts removed in step B.
- Use the (2) M6-16mm screws and washers [B-HPM616-2], including in the kit, to secure the Mav R brain bracket to the factory PEM nuts in the tubing.
- Run the power cable to the battery behind the driver seat.
- Open the battery panel to access the battery.
- Connect the accessories to the High and Low current harnesses and plug the harnesses into the brain module.
NOTE that the 15-button controller **MUST** be plugged into the module before connecting the power and ground cables to the battery. Snap on the terminal cover to the module's + terminal.
- Refer to the SW-E12 instructions manual for a detailed installation and programming procedure of the SWITCH Works Alpha12.

THIS CONCLUDES THE INSTALLATION PROCESS. QUESTIONS? PLEASE CONTACT SSV WORKS AT [818-991-1778](tel:818-991-1778) OR EMAIL SUPPORT@SSVWORKS.COM

SWITCH Works is a product by SSV Works. We are committed to your satisfaction and we know you will enjoy our products. If you have questions or need any assistance, please let us know.

SSVWORKS.COM
1-818-991-1778 EXT 2
SUPPORT@SSVWORKS.COM

Returns must be made within 30 days of the purchase date. Daims for missing items or items damaged in transit must be received within five business days of receipt of merchandise. All returns must be in original packaging and re-sellable condition. Shipping fees are not refundable.

Documents / Resources

	<p>SWITCH WORKS 230-MAVR-SWE12 Can Am Maverick Switcher Box Mounting Kit [pdf] Ins truction Manual 230-MAVR-SWE12 Can Am Maverick Switcher Box Mounting Kit, 230-MAVR-SWE12, Can Am Maverick Switcher Box Mounting Kit, Maverick Switcher Box Mounting Kit, Switcher Box Mounting Kit, Box Mounting Kit, Mounting Kit, Kit</p>
--	--

References

-  **SSV Works**

- [User Manual](#)

[Manuals+](#), [Privacy Policy](#)

This website is an independent publication and is neither affiliated with nor endorsed by any of the trademark owners. The "Bluetooth®" word mark and logos are registered trademarks owned by Bluetooth SIG, Inc. The "Wi-Fi®" word mark and logos are registered trademarks owned by the Wi-Fi Alliance. Any use of these marks on this website does not imply any affiliation with or endorsement.