



# Switch Bot SwitchBot Bot User Manual

[Home](#) » [Switch Bot](#) » Switch Bot SwitchBot Bot User Manual 

## Contents

- [1 Switch Bot SwitchBot Bot](#)
- [2 Package Contents](#)
- [3 Getting Started](#)
- [4 Add to Switch Bot Account](#)
- [5 Installation](#)
- [6 Voice Commands](#)
- [7 Replace the Battery](#)
- [8 Reset Factory Settings](#)
- [9 Specifications](#)
- [10 Safety Information](#)
- [11 Warranty](#)
- [12 Contact & Support](#)
- [13 FCC](#)
- [14 Documents / Resources](#)
- [15 Related Posts](#)

# SwitchBot Bot

Switch Bot SwitchBot Bot



## Package Contents



Bot × 1  
(CR2 battery included)



User Manual × 1



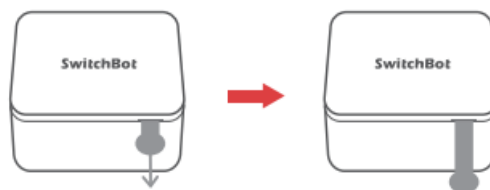
Add-on × 2



Spare Adhesive  
Tape × 1

## Getting Started

1. Remove the plastic battery isolation tab.



2. Download the Switch Bot app.



iOS 11.0+



Android OS 5.0+

3. Enable Bluetooth on your smartphone.



4. Open our app and tap the Bot icon on the Home page to control it. If the Bot icon does not appear, swipe down to refresh the page.

**Note:** You do not need a Switch Bot account to control your Bot. However, we recommend that you register a Switch Bot account and add your Bot to your account to experience more features, for example, remote control (requiring a SwitchBot Hub Mini sold separately).

## Add to Switch Bot Account

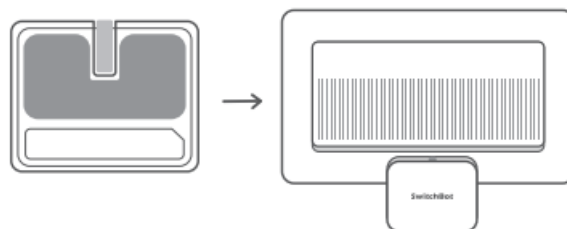
Register a SwitchBot account and sign in from the app's Profile page. Then add your Bot to your account.

Learn more at: <http://support.switch-bot.com/hc/en-us/articles/360037695814>



## Installation

Install Bot near your switch using the adhesive tape.



## Mode

There are two modes of Bot. Choose a mode to control your Bot according to your need. (Bot's mode could be changed in our app.)

**Press mode:** for push buttons or one-way control switches.



**Switch mode:** for push and pull switches requiring an add-on).

**Note:** Make sure the surface is clean and dry before applying the adhesive tape. After installing your Bot, wait for at least 24 hours for the adhesiveness to take effect.

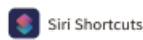
## Voice Commands

Alexa, turn on the living room light\*.

Hey Siri, make me a coffee\*\*.

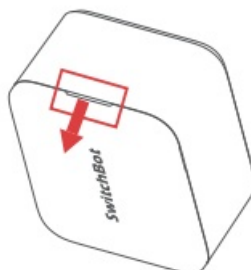
OK Google, turn off the bedroom light\*.

- You can set Bot's alias in the Switch Bot app.
- You can personalize phrases in Siri Shortcuts.
- If you have a SwitchBot Hub Mini(sold separately), you can control your Bot remotely using voice commands.
- Enable Cloud Service first before using voice commands. Learn more at <https://support.switch-bot.com/hc/en-us/sections/360005960714>



## Replace the Battery

1. Prepare a CR2 battery.
2. Remove the cover from the notch on the side of the device.
3. Replace the battery.
4. Put the cover back on the device.

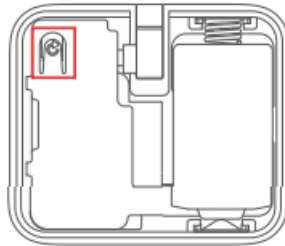


Learn more at <http://support.switch-bot.com/hc/en-us/articles/360037747374>



## Reset Factory Settings

Remove the cover and press the reset button, then the device's password, mode, and schedule will be restored to the factory settings.



## Specifications

- **Size:** 43 x 37 x 24 mm (1.7x 1.45 x 0.95 in.)
- **Weight:** Approx. 42 g (1.48 oz.)
- **Power:** Replaceable CR2 battery 1 (600 days of use under lab-controlled conditions of 25 °C [77 °F], twice a day)
- **Network Connectivity:** Bluetooth Low Energy 4.2 and above
- **Range:** Up to 80 m (87.5 yd.) in an open area
- **Swinging Angle:** 135° max.
- **Torque Strength:** 1.0 kg max.
- **System Requirements:** OS 11.0+, Android OS 5.0+, watchOS 4.0+

## Safety Information

- Only for use in dry environments. Do not use your device near sinks or other wet places.
- Do not expose your Bot to steam, extremely hot or cold environments.
- Do not place your Bot near any heat sources such as space heaters, heater vents, radiators, stoves, or other things that produce heat.
- Your Bot is not intended for use with medical or life support equipment.
- Do not use your Bot to operate equipment for which inaccurate timing or accidental on/off commands could be dangerous (e.g. Saunas, Sunlamps, etc.).
- Do not use your Bot to operate equipment for which continuous or unsupervised operations COuld be dangerous (e.g. stoves, heaters, etc.).

## Warranty

- We warrant to the original owner of the product that the product will be free from defects in materials and workmanship for a period of one year from the date of purchase. Please note that this limited warranty does not

cover

1. Products submitted beyond the original one-year limited warranty period.
2. Products on which repairs or modifying have been attempted.
3. Products subjected to falls, extreme temperatures, water, or other operating conditions outside the product specifications.
4. Damage due to natural disaster (including but not limited to lightning, flood, tornado, earthquake, or hurricane, etc.).
5. Damage due to misuse, abuse, negligence or casualty (e.g. fire).
6. Other damage that is not attributable to defects in the manufacture of product materials.
7. Products purchased from unauthorized resellers.
8. Consumable parts (including but not limited to batteries).
9. Natural wear of the product.

## Contact & Support

- **Setup and Troubleshooting:** [support.switch-bot.com](https://support.switch-bot.com)
- **Support Email:** [support@wondertechlabs.com](mailto:support@wondertechlabs.com)
- **Feedback:** If you have any concerns or problems
- when using our products, please send feedback via our app through the Profile > Feedback page.

## CE/UKCA Warning

- RF exposure information: The EIRP power of the device at the maximal case is below the exempt condition, 20 mW specified in EN 62479: 2010. RF exposure assessment has been performed to prove that this unit will not generate harmful EM emissions above the reference level as specified in EC Council Recommendation (1999/519/EC).

## CE DOC

- Hereby, Woan Technology (Shenzhen) Co., Ltd. declares that the radio equipment type SwitchBot-S1 complies with Directive 2014/53/EU. The full text of the EU declaration of conformity is available at the following internet address: [support.switch-bot.com](https://support.switch-bot.com)

## UKCA DOC

- Hereby, Woan Technology (Shenzhen) Co., Ltd. declares that the radio equipment type SwitchBot-S1 complies with UK Radio Equipment Regulations (SI 2017/1206). The full text of the UK declaration of conformity is available at the following internet address: [support.switch-bot.com](https://support.switch-bot.com)
- This product can be used in EU member states and UK.
- **Manufacturer:** Woan Technology (Shenzhen) Co., Ltd.
- **Address:** Room 1101, Qiancheng Commercial Center,
- No. 5 Haicheng Road, Mabu Community, Xixiang Subdistrict, Bao'an District, Shenzhen, Guangdong,
- P.R.China, 518100

- **EU Importer Name:** Amazon Services Europe
- **Importer Address:** 38 Avenue John F Kennedy, L-1855 Luxembourg
- Operation frequency (Max power)
- **BLE:** 2402 MHz to 2480 MHz (5.0 dBm)
- **Operation temperature:** 0 °C to 55 °C

## FCC

### Warning

- This device complies with Part 15 of the FCC Rules.
  - Operation is subject to the following two conditions
1. This device may not cause harmful interference.
  2. This device must accept any interference received, including interference that may cause undesired operation.

**NOTE:** This equipment has been tested and found to comply with the limits for a Class B digital device, pursuant to part 15 of the FCC Rules. These limits are designed to provide reasonable protection against harmful interference in a residential installation.

- This equipment generates uses and can radiate radio frequency energy and, if not installed and used in accordance with the instructions, may cause harmful interference to radio communications. However, there is no guarantee that interference will not occur in a particular installation. If this equipment does cause harmful interference to radio or television reception, which can be determined by turning the equipment off and on, the user is encouraged to try to correct the interference by one or more of the following measures:
- Reorient or relocate the receiving antenna.
- Increase the separation between the equipment and receiver.
- Connect the equipment into an outlet on a circuit different from that to which the receiver is connected.
- Consult the dealer or an experienced radio/TV technician for help.
- **NOTE:** The manufacturer is not responsible for any radio or TV interference caused by unauthorized modifications to this equipment. Such modifications could void the user's authority to operate the equipment.

### FCC Radiation Exposure Statement

- The device has been evaluated to meet general RF exposure requirement. The device can be used in portable exposure condition without restriction.

### IC Warning

- This device contains license-exempt transmitter(s)/ receiver(s) that comply with Innovation, Science and Economic Development Canada's license-exempt RSS(s).

### Operation is subject to the following two conditions:

1. This device may not cause interference.


2. This device must accept any interference, including interference that may cause undesired operation of the device.

#### EU declaration of conformity is available

- at the following internet address: <https://support.switch-bot.com/hc/en-us/articles/5114648510359-DECLARATION-OF-CONFORMITY>



#### Documents / Resources

	<a href="#">Switch Bot SwitchBot Bot</a> [pdf] User Manual SwitchBot, Bot, Switch Bot
---	--

[Manuals+.](#)