



swim fun 1851 Pump With Timer User Manual

[Home](#) » [swim fun](#) » swim fun 1851 Pump With Timer User Manual 



Contents

1 USER MANUAL

1.1 PUMP WITH TIMER

1.1.1 ART. 1851/1852/1853

1.2 Spare parts

1.3 1. Instruction manual for Filter pump SPS

1.4 2. Intended use

1.5 3. Warnings and safety instructions

1.5.1 Specified Conditions of Use

1.5.2 General Safety Instructions

1.5.3 Hazard generated by ambient condition!

1.5.4 Danger by pump failures

1.6 4. Check scope of delivery

1.7 5. Function

1.8 6. Commissioning of the timer / battery

1.8.1 WARNING-INITIAL:

1.9 7. Timer settings

1.9.1 Timer utilization

1.9.2 Commissioning of the timer / battery change

1.9.3 Initial start with external filter control

1.10 8. Montage

1.10.1 Mains Connection

1.10.2 Start

1.11 9. Troubleshooting

1.11.1 Technical Specifications

1.11.2 Cleaning

1.11.3 Storage

1.11.4 Disposal

1.12 10. Service

1.13 11. Guarantee

1.14 12. Complaints

1.15 13. Responsible Disposal

2 Documents / Resources

2.1 References

3 Related Posts

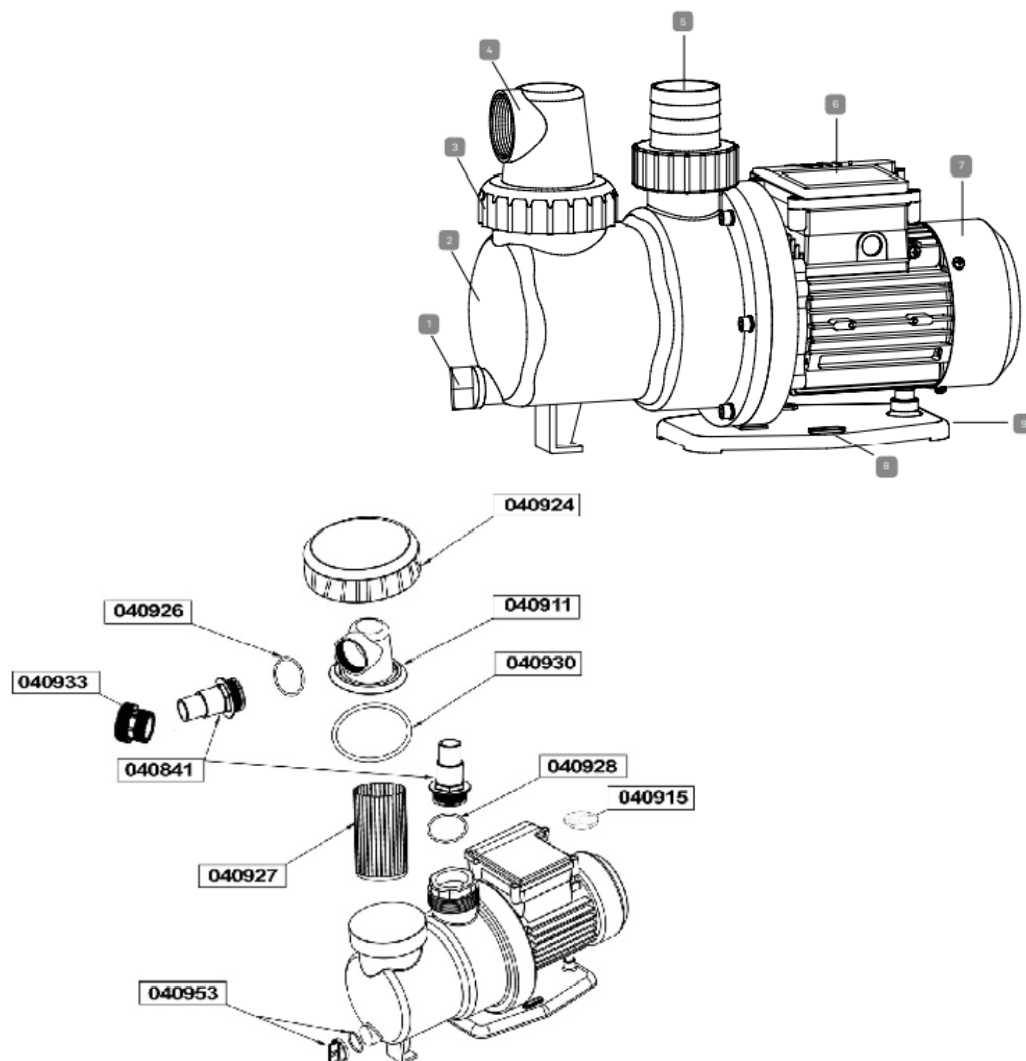
USER MANUAL

PUMP WITH TIMER

ART. 1851/1852/1853

Spare parts

- drain cap
- pump body
- screw M88*3r
- inlet connector
- outlet connector
- timer
- body cover
- fix hole
- base plate



1. Instruction manual for Filter pump SPS

This instruction manual relates to the product stated above. It contains important information on starting your product for the first time and how to operate it. Carefully read through the instruction manual – particularly the safety instructions – before using this product. Non-compliance with this instruction manual may lead to major injuries or damage to your product. The instruction manual is based on standards and regulations applicable within the European Union. If the product is being used abroad, please follow any country-specific guidelines and laws. Store the instruction manual in a safe location for later consultation and submission to third parties, where applicable.

2. Intended use

This product is solely intended for private use and is not suitable for commercial use. The purpose of these instruction is to ensure the correct installation and to have the best performance of your pump. The pump is designed for using clean water, up to a maximum temperature of 35°C. All used materials are of excellent quality and are subjected to strict controls and verified to demanding standards. The correct observance of the instruction prevents the overload of the motor. The liability of any kind of consequences will be rejected. Only use the product as described in this instruction manual. Any other use is considered improper use and may lead to personal injury or damage to property. This item is not a toy. The manufacturer or retailer assumes no liability for damage resulting from improper or incorrect use.

3. Warnings and safety instructions

Read and observe all instructions. Non-compliance with these warnings and instructions may result in damage to property, severe personal injury or even death. These product warnings, instructions and safety regulations are extensive but cannot cover all potential risks and dangers and are thus not to be considered exhaustive. Please

be cautious and assess potential dangers appropriately. Incorrect use/handling of the product can lead to life-threatening situations.

Caution!

Leave repairs to experts in order to prevent hazards. Consult a specialist workshop. Liability is waived and warranty claims expire if repairs are carried out independently or if the product is improperly installed or used incorrectly. Only original parts corresponding to the original product specifications may be used during repairs.

Warning!

Hazardous for children and persons with reduced physical, sensory or mental abilities (such as the handicapped, elderly individuals with impaired physical and mental abilities), or those with a lack of experience and knowledge. Children must not be allowed to play with this product. Cleaning may not be performed by children and persons with reduced physical, sensory or mental abilities.

Note!

Risk of damage! This product may be damaged through improper use.

Danger of electrocution! Faulty electrical installation or too high mains voltage can lead to electrocution. Only connect the product if the mains voltage on the socket corresponds to the technical specifications. Only connect this product using an easily accessible socket to ensure it can be rapidly disconnected from the mains in the event of a fault. Do not operate the product if it exhibits visible damage or the mains cable/plug is defective. As additional protection, it is recommended to install a residual current device (FI/RCD) with a tripping current of no more than 30 mA. Consult with an electrician for advice. Only open the product as described in this manual. Leave repairs to experts in order to prevent hazards. Consult a specialist workshop. Liability is waived and warranty claims expire if repairs or changes to the product are carried out independently or if the product is improperly connected or operated incorrectly. This product features electrical and mechanical parts which are indispensable for protecting against potential hazards.

Never touch the plug with wet hands. Never pull out the plug from the socket using the cable – always pull on the plug. Keep the product, plug and all cables away from open fires and hot surfaces. Lay the cable so that it does not pose a tripping risk and do not place it under the ground. Lay cables in such a way that they will not be damaged by lawn mowers and other similar devices. Do not kink the cable and do not lay it over sharp edges. Do not use an extension cable, multiple socket adapters or other adapters. Do not direct water jet directly against the pump or other electrical parts! Risk of fatal electric shock! If the supply cord is damaged, it must be replaced by the manufacture or its service agent or a similarly qualified person in order to avoid a hazard. Unplug: prior to all servicing.

Specified Conditions of Use

This pump must not be used to supply drinking water or for pumping foodstuff. Explosive, flammable, aggressive fluids or substances detrimental to health as well as salt water must not be pumped. This pump is not suitable for commercial or industrial use. Modification of the pump or use of parts not approved by the manufacturer is not permitted. Any other use is not as specified. The manufacturer assumes no liability for damage caused by unspecified use.

General Safety Instructions

Children, juveniles and persons not familiar with the instructions are not permitted to operate the pump. When used as domestic water supply all applicable local regulations pertaining to water supply and waste water disposal, plus DIN 1988 (where applicable) have to be observed. The following residual risks do principally exist when operating pumps and pressure vessels and can not be fully eliminated even by employing safety devices.

Hazard generated by ambient condition!

Do not expose to rain. Do not operate in damp or wet environment. Do not use the pump in hazardous locations or near inflammable liquids and gases!

Danger by pump failures

If you notice transport damage while unpacking, notify your supplier immediately. Do not operate the pump! Before each use check the pump, especially the power cable and plug for possible damage. Risk of fatal electric shock! A damaged pump must be repaired before it can be used again. Do not attempt to repair the pump yourself! Only trained specialists are permitted to service or repair pumps or pressure vessels. If the pump is not fixed, do not operate if there are people in the swimming pool. The pump must be protected by an RCD with no more than 30 mA current. The installation of the electric pump is only permitted in swimming pools or ponds that meet DIN standards VDE 0100 part 702/11.82. In case of doubt, please speak with an expert.

Note!

Risk of damage! The product may be damaged if you open the packaging with a sharp knife or other sharp objects without due care and attention. Please open the packaging very carefully.

4. Check scope of delivery

- Remove the product from the packaging.
- Check that all included items have been delivered in full.
- Check whether the item, or its parts, exhibit damage. If there is damage, do not use the product. Get in contact with the service address stated at the end of the manual.

5. Function

The new T-series swimming pool pump is the high-tech version of the normal swimming pool pump. The new one has an included timer. By adjusting the desired time (2,4,6,10,12,16 or 24 hours), the pump will operate from this point in time for the adjusted time and stand still for the rest of the 24 hours. Within 24 hours, the filter run time can be adjusted only once. Adjusting several intervals within 24 hours is not possible.

The timer has a rechargeable battery (lithium button cell 3V CR 2032) included to save the settings in the case of

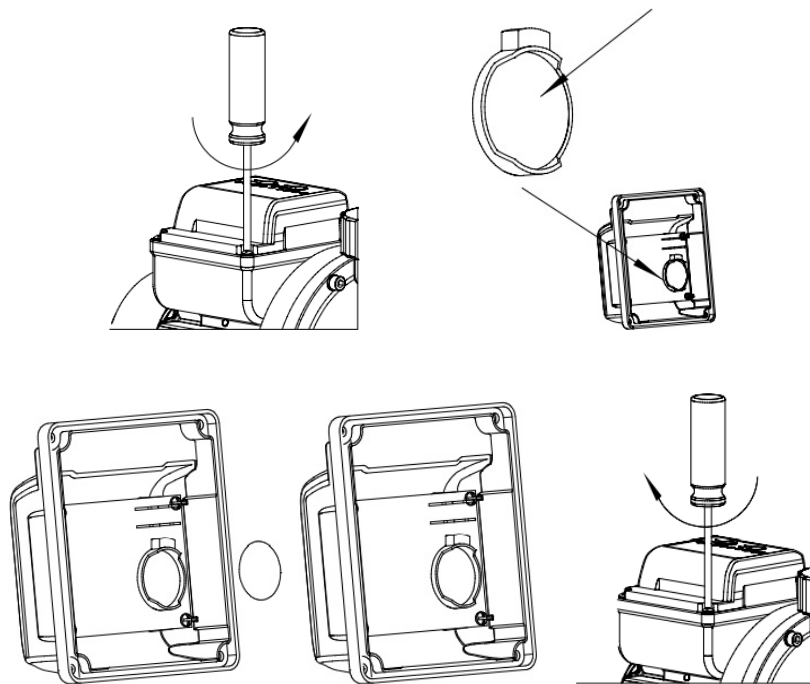
a electrical power outage. If there will be an electrical power outage the pump will start automatically at the next day, if the electrical power is back. The remaining time of the filter cycle is showed on the LED of the pump.

6. Commissioning of the timer / battery

- Use a screwdriver to tighten the screws.
- Open the cover
- Gently press your finger to the side of the battery, this pops out freely.
- Change the battery (lithium button cell 3V CR 2032).

WARNING-INITIAL:

The battery which is installed upon delivery is fitted with protective plastic strips to prevent the battery from early discharge. The plastic strip must be removed prior to use. Close the cover. Use a screwdriver to tighten the cap back on.



7. Timer settings

Example for 6 hours filter time: Switch on the pump, if the indication light isn't red. (Illustration 7) Press the timer, until the LED "6" turns red. Press the ON/OFF button to start the pump, then the 6H interval will start. From this point the filter pump runs for 6 hours non-stop. For example: If you press the ON/OFF button in this example by 12 o'clock, then the filtration system is running until 18 o'clock. The next day at 12 o'clock, it will start again.

Timer utilization

By adjusting the desired time (2, 4, 6, 10, 12, 16 or 24 hours), the pump will operate from this point in time for the adjusted time and stand still for the rest of the 24 hours.

Within 24 hours, the filter run time can be adjusted only once. Adjusting several intervals within 24 hours is not possible.

The timer has a rechargeable battery (lithium button cell 3V CR 2032) included to save the settings in the case of a electrical power outage. If there will be an electrical power outage, the pump will start automatically at the next

day, if the electrical power is back. The remaining time of the filter cycle is showed on the LED of the pump.

Warning

Before replacing the battery, the pump must always be separated by pulling out the mains plug from the mains!

Commissioning of the timer / battery change

- Use a screwdriver to tighten the screws.
 - Open the cover.
 - Gently press your finger to the side of the battery, this pops out freely.
 - Change the battery (lithium button cell 3V CR 2032).
 - Close the cover.
 - Use a screwdriver to tighten the cap back on.
-

WARNING-INITIAL:

The battery which is installed upon delivery is fitted with protective plastic strips to prevent the battery from early discharge. The plastic strip must be removed prior to use.

Initial start with external filter control

If the operation is not required with the included switch, proceed as follows. Make sure that the battery is fully functional in the timer. Then adjust clock for 24 hours continuous operation. Now, an external timer-clock can be preceded and set arbitrarily (or several inputs and turn-off times are now possible).

8. Montage

All screw fittings must be sealed with thread sealing tape; leaks cause the priming of air, which reduces or completely prevents the priming of water. Keep suction line as short as practical, as with increasing length the pump capacity is reduced. The suction line should ascend towards the pump to prevent air locks. A sufficient water supply must be ensured, the foot valve at the end of the suction line must be submerged in water at all times.

- All screw fittings should be sealed with thread sealing tape to prevent leakage
- All parts of the pressure line must be resistant to internal pressure.
- All parts of the pressure line must be installed in a workmanlike manner.

Mains Connection

Danger! Risk of electric shock! Do not operate the pump in wet environment and only under the following

conditions

- Connect only to an earthed and tested.
- Mains voltage and fuse protection must correspond with the requirement.
- The pump is to be supplied a residual current device (RCD) having a rated residual operating current not exceeding 30mA.
- We recommend the use of RCD's as a general precaution for personal protection.
- When operating the pump outdoors the electrical connections must be splash-proof; the connections must not be placed into water.

Start

After installation, loss of water or priming of air the pump needs to be filled with water. Starting the pump without water causes damage!

Note:

The suction line does not need to be filled, the pump is self-priming (Exept filter pumps without prefilter. These pumps are not selfpriming and have to be below the water level. For example filter pump for the filter system Speed Clean Eco 30, Cleanmaster) However, depending on length and diameter of the suction line it may take some time until pressure has built up.

1. Remove the water filler plug, complete with gasket.
2. Slowly pour in clear water, until the pump is filled.
3. To reduce the time needed for priming you can also fill the suction line.
4. Open pressure line (open tap or spray nozzle) for any air to escape during the pumping
5. Start pump
6. Turn pump OFF when water runs out steadily.

9. Troubleshooting

Pump does not prime correctly or runs very noisily:	Lack of water.	Ensure there is a sufficient water supply – Suction line leaky. Seal suction line, tighten screw fittings..
	Suction head too high.	Observe max, suction head. Install check valve, fill suction line with water
	Suction strainer (optional accessory) blocked.	Clean, replace if necessary.
	Check valve (optional accessory) blocked.	Clean, replace if necessary. Water leaks between motor and pump, Duocone seal worn Replace Duocone seal.
Pressure too low:	Suction line leaky or too much suction head.	See above.

Technical Specifications

For technical specifications please refer to the type plate of the filter pump.

1851	1852	1853
SPS 50-1T	SPS 75-1 T	SPS 100-1 T
230 V / 250 W 117 l/min max. Pump height 7,5 m self-priming Connector Ø 32/38 mm maximum water temperature 35 °C Integrated timer switch	230 V / 450 W 142 l/min max. Pump height 9 m self-priming Connector Ø 32/38 mm maximum water temperature 35 °C Integrated timer switch	230 V / 550 W 158 l/min max. Pump height 10 m self-priming Connector Ø 32/38 mm maximum water temperature 35 °C Integrated timer switch

Note

We do not recommend the pump working with water that is over 35 degrees for a long period of time.

Before replacing the battery the pump must always be separated by pulling out the mains plug from the mains!

Cleaning

Turn the product off before cleaning and pull out the mains plug. Use conventional cleaning products. Do not use solvent-based or abrasive cleaning agents/tools, i.e. no hard sponges, brushes etc..

Storage

The product must be thoroughly dried after cleaning. After which, it is to be stored in a dry location protected from frost.

Disposal

Disposing of packaging: The packaging material has been selected in view of environmental concerns and disposability and is therefore recyclable. The paper and cardboard can be recycled, as can the plastic coverings. Disposing of the product: Applicable in the European Union and other European states with systems in place for collecting and sorting recyclable materials. Dispose of the product in accordance with any laws and regulations applicable at your place of residence.

10. Service

We have specialist knowledge of our products and the field in general, so you can get help quickly and easily. If you have any questions or need more information, please feel free to call

Customer service on +45 70 22 68 56

If you need service or to make a warranty claim, you must create a case directly in our support system. Go to the home page under SUPPORT.

11. Guarantee

The product is covered by a 12-month guarantee (plus 12-month right to claim). The warranty period applies from the date of purchase on your purchase receipt. Proof of purchase must be provided when claiming for service under the guarantee. NB: Keep your purchase receipt in a safe place!

The guarantee does not cover normal wear and tear, scratches, wear and tear or cosmetic damage. Specifically, the guarantee does not cover damage caused as a result of:

- Improper use or handling including frost damage by improper storage.
- A fall or shock
- Repairs, modifications or etc. performed by anyone other than Swim & Fun Scandinavia servicecenter.

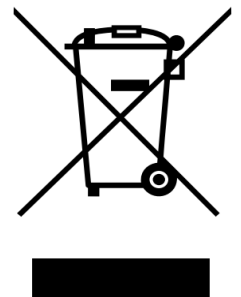
12. Complaints

If you have a claim, you must contact Swim & Fun Scandinavia at swim-fun.com/Support.

By submission of a defective item it must be packaged so that the product is protected against transport damage. It is your responsibility that the product arrives safely. Please notify us on your name, address and e-mail – to enable us to return the product to you. Remember to let us know what is wrong with the product.

13. Responsible Disposal

This symbol indicates that this product should not be disposed of with general household waste. This applies throughout the entire EU. In order to prevent any harm to the environment or health hazards caused by incorrect waste disposal, the product must be handed in for recycling so that the material can be disposed of in a responsible manner. When recycling your product, take it to your local collection facility or contact the place of purchase. They will ensure that the product is disposed of in an environmentally sound manner.



MV-1851-1852-1853-04-2022
Manual (UK)

© All rights reserved Swim & Fun A/S 2022

Swim & Fun A/S . info@swim-fun.com . www.swim-fun.com

Documents / Resources

