



VPA 2 Variable Phone
Adapter



SWAROVSKI OPTIK VPA 2 Variable Phone Adapter User Manual

[Home](#) » [Swarovski Optik](#) » [SWAROVSKI OPTIK VPA 2 Variable Phone Adapter User Manual](#) 

Contents

- [1 SWAROVSKI OPTIK VPA 2 Variable Phone Adapter](#)
- [2 Product Specifications](#)
- [3 Product Usage Instructions](#)
- [4 FAQ](#)
- [5 DIMENSION](#)
- [6 DIFFERENT SIZES](#)
- [7 ASSEMBLY INSTRUCTION](#)
- [8 ABOUT COMPANY](#)
- [9 Documents / Resources](#)
 - [9.1 References](#)
- [10 Related Posts](#)



SWAROVSKI OPTIK VPA 2 Variable Phone Adapter



Product Specifications

- **Model:** VPA 2 – VARIABLE PHONE ADAPTER
- **Brand:** Swarovski-Optik
- **Dimensions:** 67mm x 29mm
- **Compatible with:** CL Companion, NL Pure 42/52, EL Range 42, TA SLC 56, ATX/STX, ATC/STC, CL Curio, CL Pocket, NL Pure 32, EL 42/50, ATS/STS, BTX EL Range 32, EL 32 MY Junior

Product Usage Instructions

Step 1: Attaching the Adapter

1. Identify the compatible device from the list provided in the specifications.
2. Align the VPA 2 with the device's mounting point.
3. Securely attach the adapter to the device.

Step 2: Adjusting for Phone Compatibility

1. Extend or retract the adapter to accommodate different phone sizes.
2. Ensure a snug fit for your phone within the adapter.

Step 3: Connecting Your Phone

1. Open the VPA 2 to create a stable platform for your phone.
2. Place your phone securely on the adapter's platform.
3. Adjust the position as needed for optimal viewing and stability.

Step 4: Using the Adapter

1. Utilize the adapter to connect your phone to a compatible Swarovski Optik device.
2. Enjoy enhanced viewing and capture capabilities with your phone and optical device combined.

FAQ

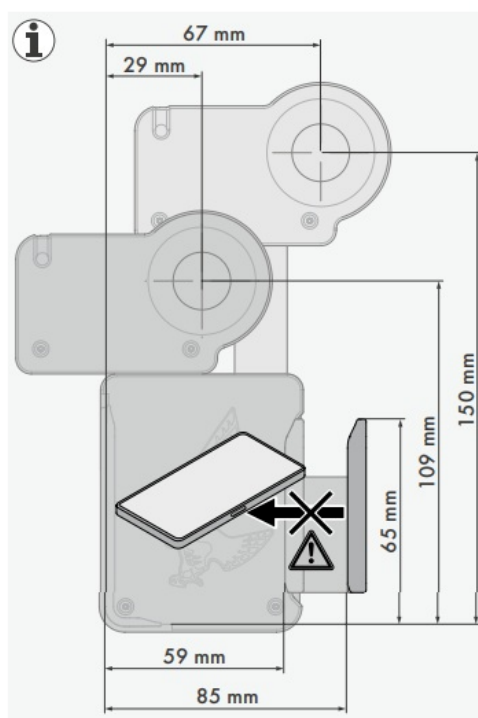
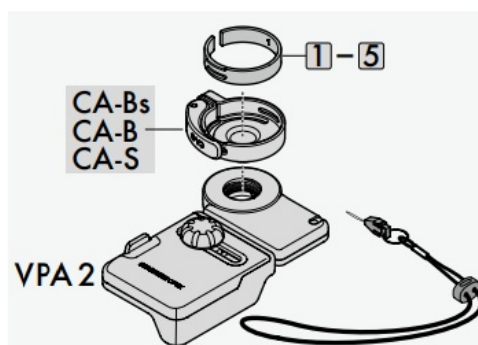
- **Is the VPA 2 compatible with all Swarovski Optik devices?**

The VPA 2 is compatible with a range of Swarovski Optik devices listed in the specifications section. Please refer to the list for compatibility.

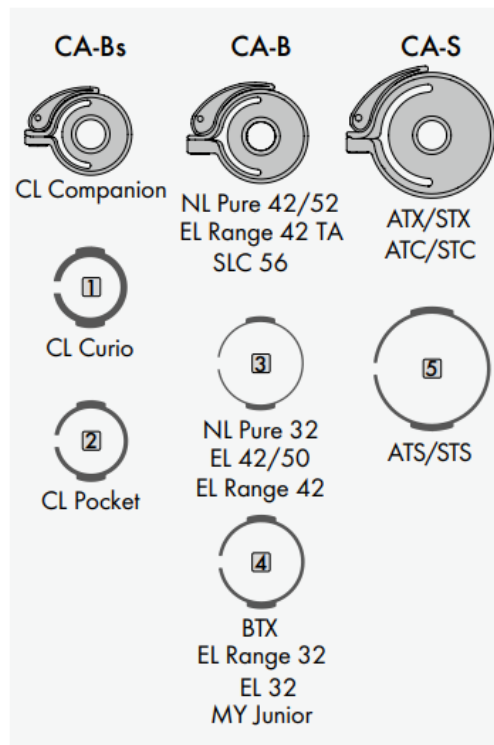
- **How do I adjust the VPA 2 for different phone sizes?**

You can extend or retract the adapter to accommodate various phone sizes. Ensure a secure fit for your phone within the adapter.

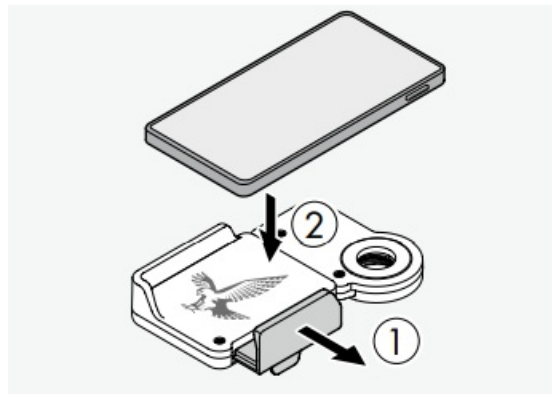
DIMENSION

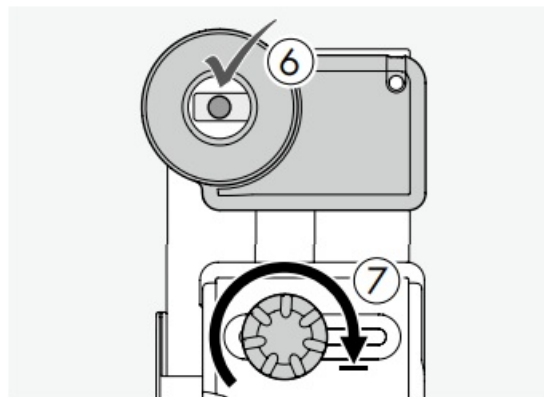
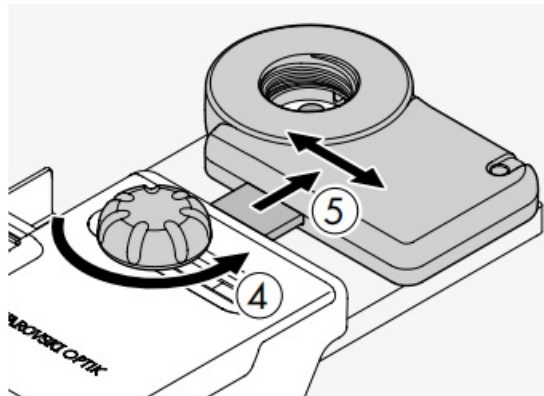
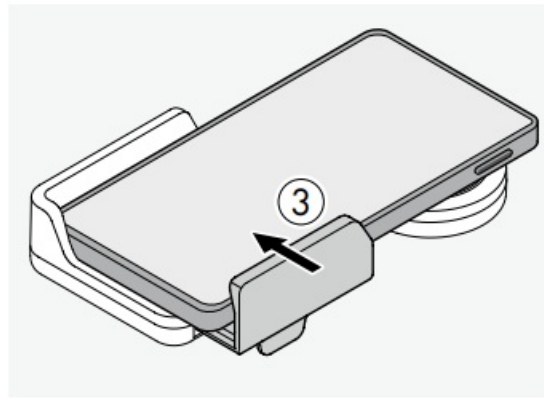


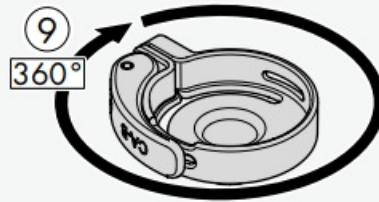
DIFFERENT SIZES



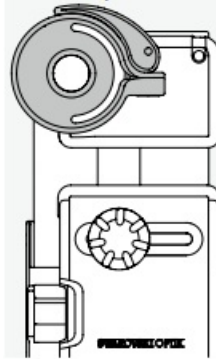
ASSEMBLY INSTRUCTION



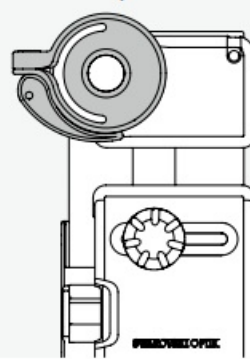


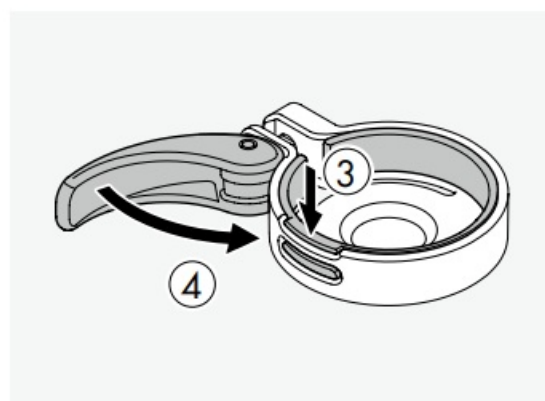
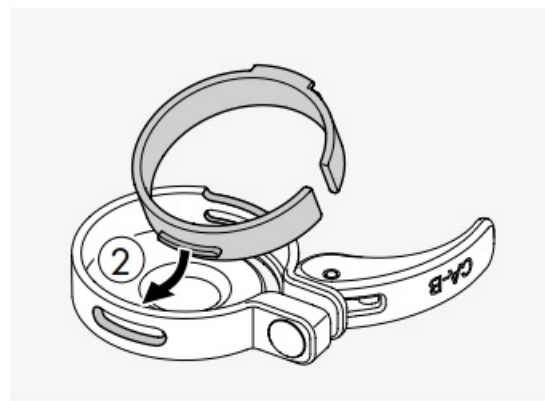
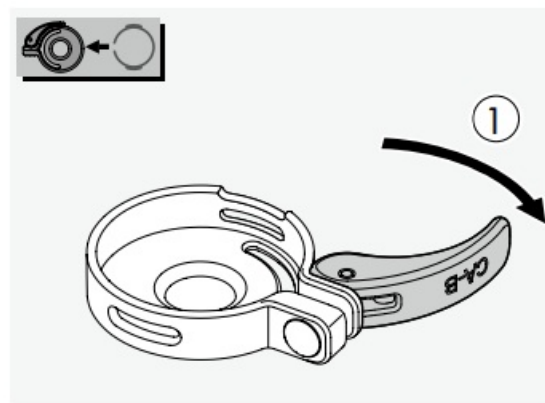


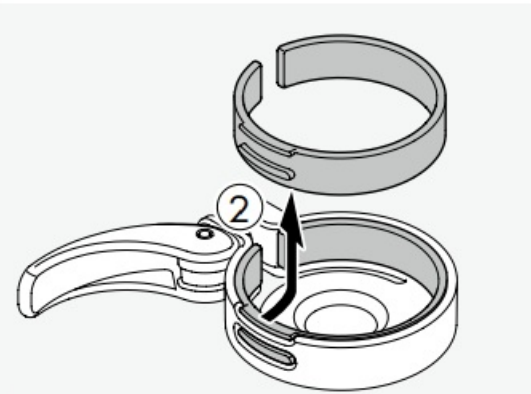
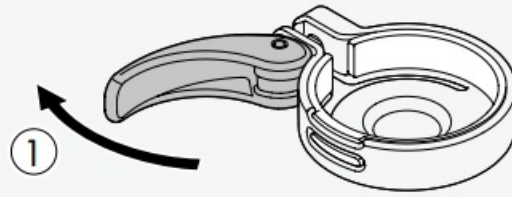
Option A

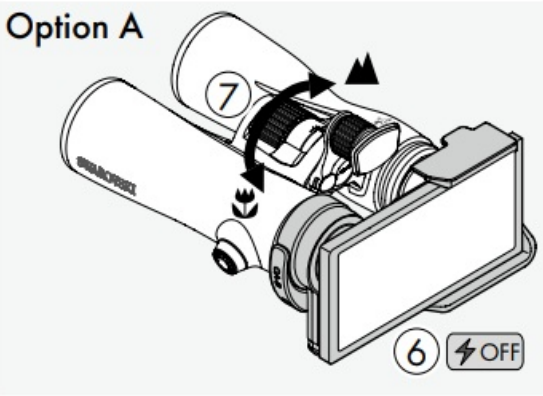
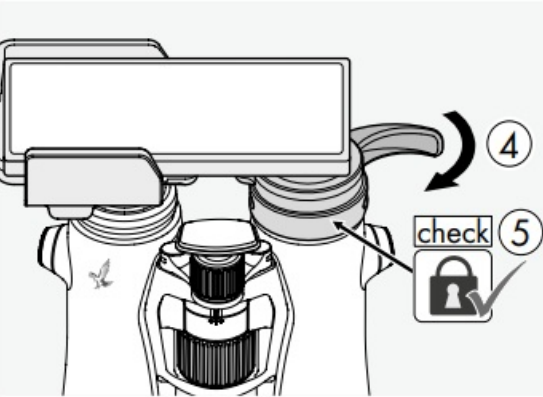
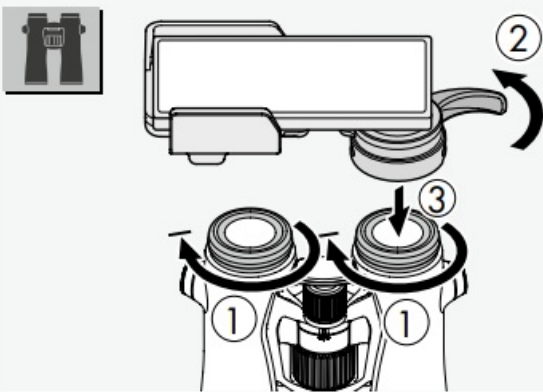


Option B

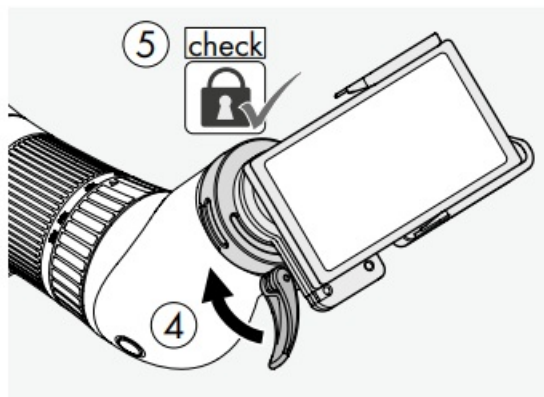
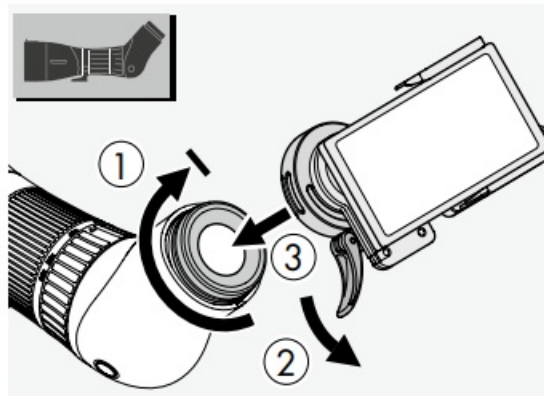
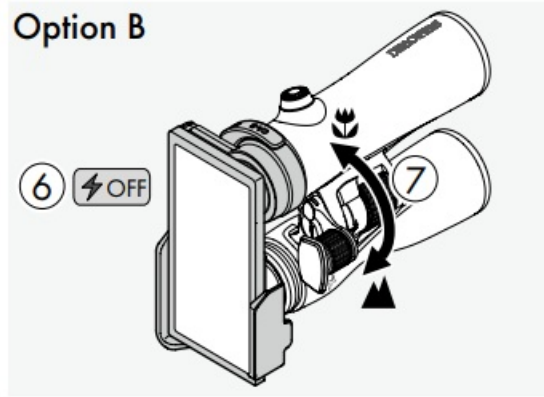




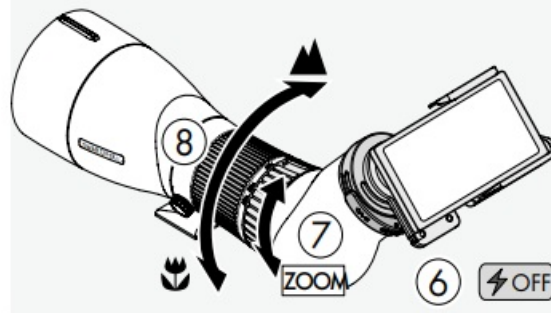




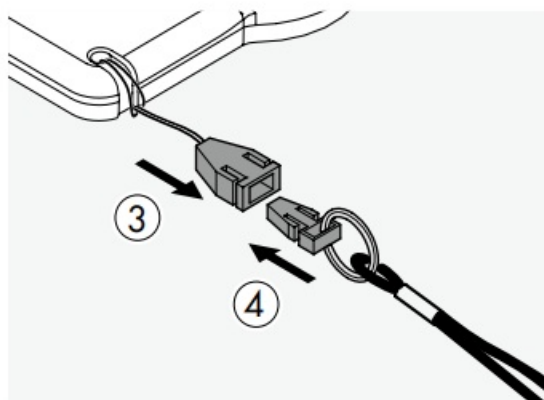
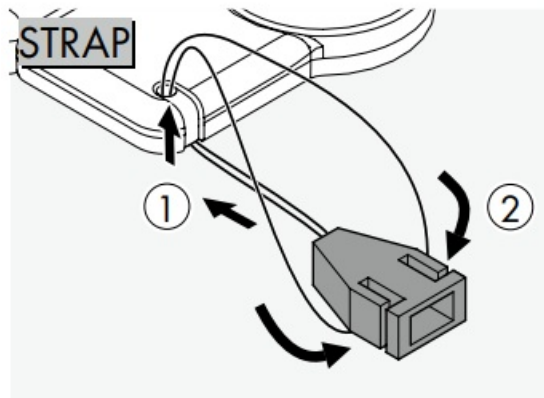
Option B



Option A



more options



ABOUT COMPANY

- Swarovski-Optik AG & Co KG.
- 6067 Absa
- m, Austria
- Tel. 00800/32425056
- customerservice@swarovskioptik.com


- SWAROVSKIOPTIK.COM

Documents / Resources



[SWAROVSKI OPTIK VPA 2 Variable Phone Adapter](#) [pdf] User Manual
VPA 2 Variable Phone Adapter, VPA 2, Variable Phone Adapter, Phone Adapter, Adapter

References

-  SWAROVSKI OPTIK
- [User Manual](#)

[Manuals+.](#) [Privacy Policy](#)

This website is an independent publication and is neither affiliated with nor endorsed by any of the trademark owners. The "Bluetooth®" word mark and logos are registered trademarks owned by Bluetooth SIG, Inc. The "Wi-Fi®" word mark and logos are registered trademarks owned by the Wi-Fi Alliance. Any use of these marks on this website does not imply any affiliation with or endorsement.