

# The Swann Security Skill With Amazon Alexa User Guide

[Home](#) » [Swann](#) » The Swann Security Skill With Amazon Alexa User Guide 

## Contents

- [1 THE SWANN SECURITY SKILL WITH AMAZON ALEXA](#)
- [2 Documents / Resources](#)
  - [2.1 References](#)
- [3 Related Posts](#)



## THE SWANN SECURITY SKILL WITH AMAZON ALEXA

### SETUP GUIDE

#### ABOUT THE SWANN SECURITY SKILL

Now it's even easier to see what's happening. Amazon Alexa works with Swann Security to stream live camera video to your Amazon Echo Spot or Echo Show device simply by speaking your commands. Follow this guide to learn how to connect Amazon Alexa with Swann Security for voice control.

#### GETTING STARTED

To use Amazon Alexa voice control with Swann Security, you must have the following:

- Swann Security app
- Swann Security account with a Swann device(s) paired
- Amazon Alexa app and account
- Amazon Echo Spot or Echo Show device


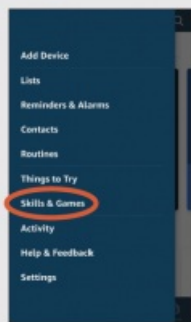
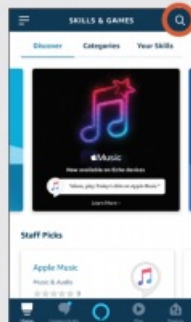
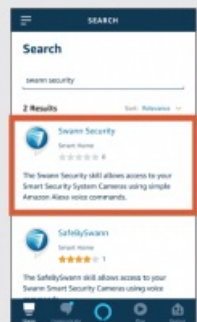
#### VIEWING YOUR CAMERAS USING AMAZON ALEXA

By default, Alexa responds to the name assigned to your camera (or channel) in the Swann Security app. An alternate name can also be given to your camera through the Alexa app. Avoid using any special characters like % and numbers. You may want to consider changing the name of your camera if this is the case. Use clear, distinct words that Alexa will find easier to understand and that don't overlap with any other smart devices in your home.

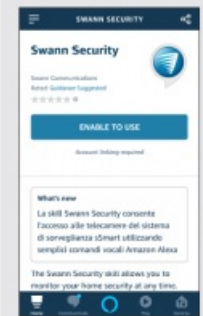

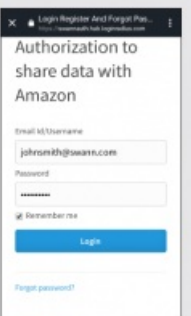
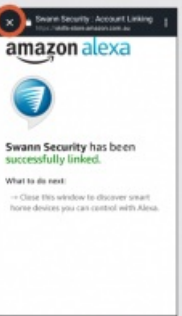
- To connect to your camera and show live video, just say:  
"Alexa, show <camera name>"
- To stop streaming your camera, simply say:  
"Alexa, go home" or "Alexa, stop"

## ENABLING YOUR SWANN SECURITY SKILL & DISCOVERING DEVICES

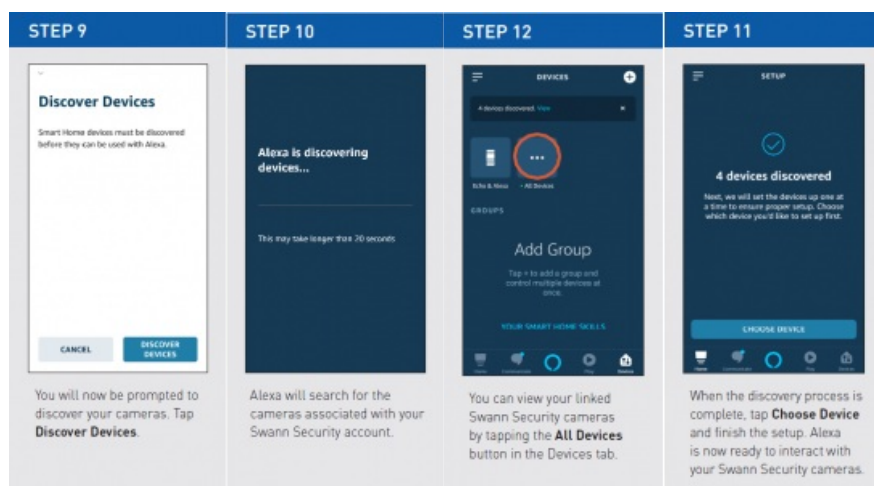
Before you start, ensure your Amazon Alexa and Echo Spot or Echo Show device are setup and working. To test this, ask Alexa about the weather. If Alexa responds, this will confirm Alexa is working. Also, open the Swann Security app and confirm that you are able to stream live video from your cameras.

STEP 1	STEP 2	STEP 3	STEP 4
 <p>From the Amazon Alexa app, tap the Menu icon (the three horizontal lines) in the top left corner.</p>	 <p>Select the Skills &amp; Games option from the menu.</p>	 <p>Tap Q, and search for "Swann Security".</p>	 <p>The "Swann Security" skill will appear in the results. Tap it.</p>

## ENABLING YOUR SWANN SECURITY SKILL & DISCOVERING DEVICES

STEP 5	STEP 6	STEP 7	STEP 8
 <p>Tap <b>Enable to use</b> on the Swann Security skill page.</p>	 <p>To activate the Swann Security skill, you will need to link your Swann Security account.</p>	 <p>Enter the email and password associated with your Swann Security account, then tap <b>Login</b>.</p>	 <p>Once your account is linked, this page will appear. Tap <b>Done</b> or "X" in the top left corner.</p>

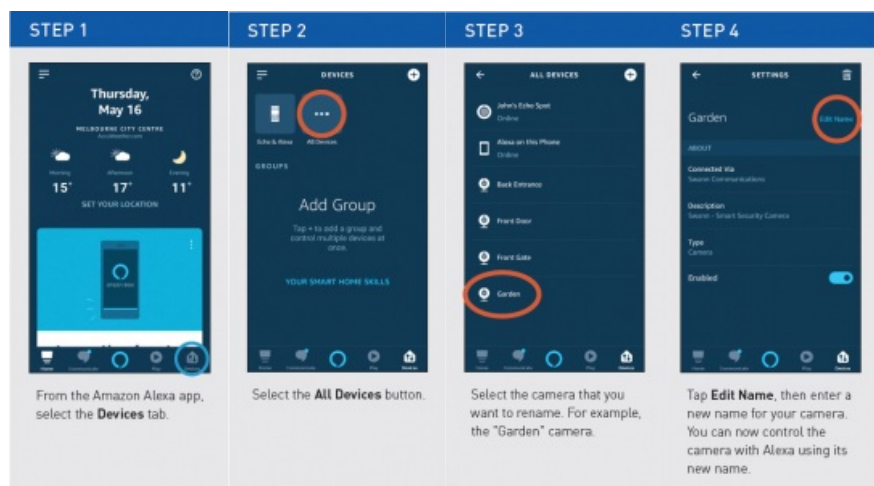
## ENABLING YOUR SWANN SECURITY SKILL & DISCOVERING DEVICES



**TIP** If you pair more Swann devices with the Swann Security app later on or if you rename cameras in the Swann Security app, you will also need Alexa to rediscover devices. Just tap the “+” icon in the top right of the Devices tab (see step 12 above) or ask Alexa to discover devices by saying, “Alexa, discover my devices.”

## USING AN ALTERNATE NAME FOR YOUR CAMERA

In addition to the camera name originally discovered, you can also provide an alternative camera name for Alexa to use by renaming the camera through the Amazon Alexa app. **Note that renaming the camera on Alexa does not change the original name of the camera in the Swann Security app.**



Amazon, Amazon Echo, Alexa, and the Amazon logo are trademarks of Amazon.com, Inc. or its affiliates.

© Swann Communications 2019 Version 1.0

## Documents / Resources

	<p><a href="#">Swann The Swann Security Skill With Amazon Alexa</a> [pdf] User Guide</p> <p>The Swann Security Skill With Amazon Alexa</p>
--	--

## References

- [a Amazon.com. Spend less. Smile more.](#)