



Swann SWIFIXTRCAM security camera User Manual

[Home](#) » [Swann](#) » Swann SWIFIXTRCAM security camera User Manual 

Contents

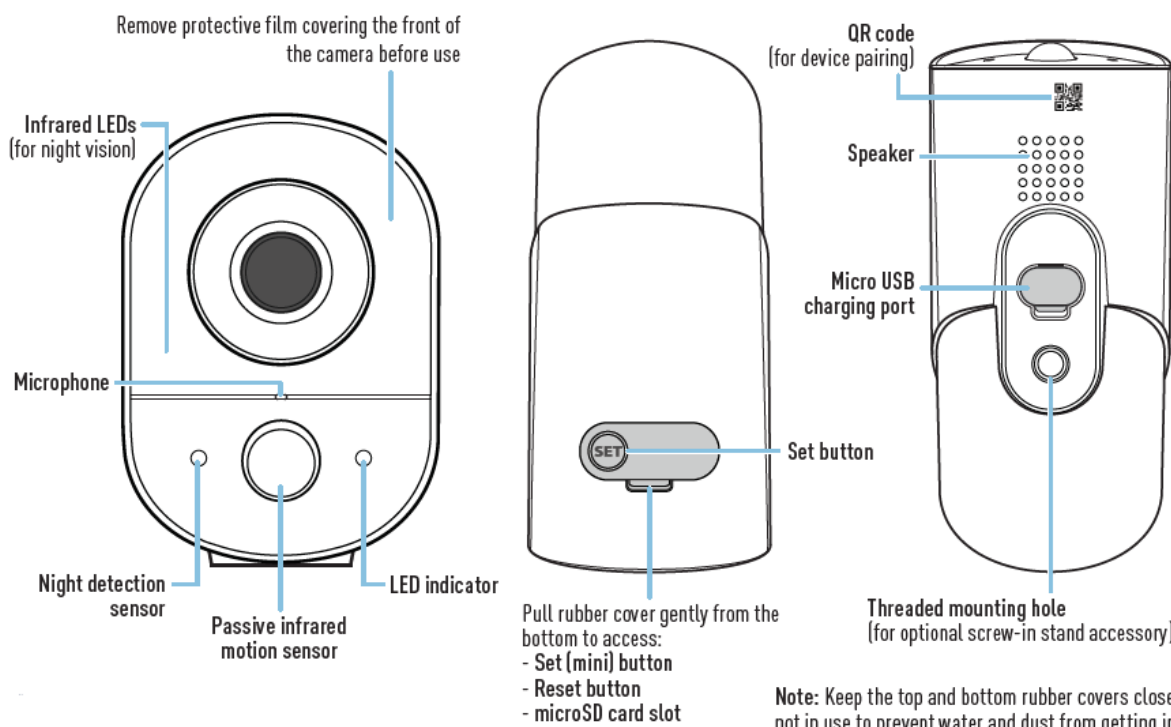
- [1 Swann SWIFIXTRCAM security camera CAMERA OVERVIEW](#)
- [2 Charging the camera](#)
- [3 Installing the microSD card](#)
- [4 Mounting the magnetic stand](#)
- [5 FCC STATEMENT](#)
- [6 INSTALLATION REMINDER](#)
- [7 Documents / Resources](#)
- [8 Related Posts](#)

Swann.

Swann SWIFIXTRCAM security camera



CAMERA OVERVIEW



Charging the camera

Before using the camera for the first time, charge it for at least two hours with the included micro USB charging cable.


1. Lift the rubber cover of the micro USB port on the bottom of the camera.
2. Insert the smaller end of the micro USB charging cable into the micro USB port on the camera.
3. Insert the larger end of the micro USB charging cable into a USB wall charger such as the USB power adapter that came with your smartphone.

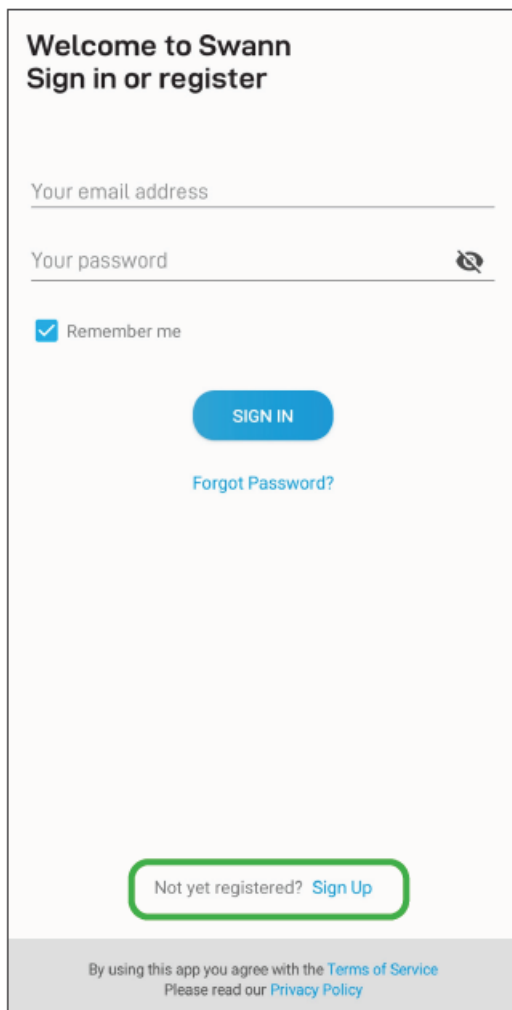
4. The LED indicator on the front of the camera turns solid blue indicating that the camera is charging. When the camera is fully charged, the LED indicator will turn off.
5. Actual charging times may vary depending on the USB power supply (DC5V 2.0A is recommended for faster charging) and the remaining battery level. A full charge may take up to 11 hours (due to the camera's large battery capacity).

Note: Once you have set up your camera, you can easily track the charging progress (%) using the app.

Installing the microSD card

A microSD card is required for the camera to record events. Depending on the model purchased, your camera will come with a pre-installed 16GB or 32GB microSD card. You can easily replace the microSD card with a new one (up to 128GB, minimum Class 10 recommended) if needed in the future. Lift the rubber cover on the top of the camera, eject the current microSD card (push in until it clicks) from the microSD card slot and then replace it with another microSD card (with the label side facing the back of the camera). Format any microSD card being used with the camera for the first time using the app.

1. Download the latest version of the Swann Security  app from the Apple App Store® or Google Play™ Store on your iOS or Android device. Search for “Swann Security”.
2. Open the app and create your Swann Security account by tapping “Not yet registered? Sign Up” at the bottom of the screen. Then, activate your Swann Security account by confirming the verification email that is sent to the registered email address.



Welcome to Swann
Sign in or register

Your email address

Your password

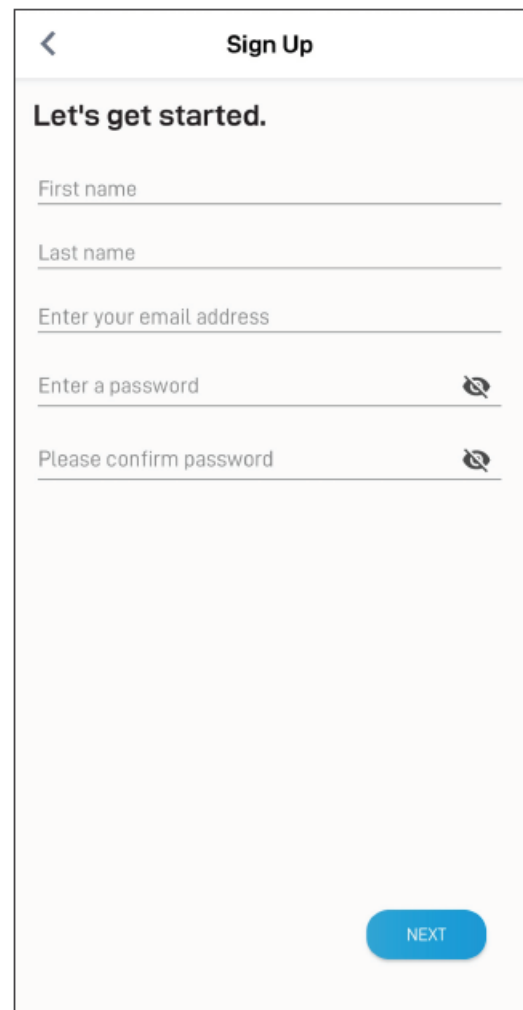
☒ Remember me

SIGN IN

[Forgot Password?](#)

Not yet registered? [Sign Up](#)

By using this app you agree with the [Terms of Service](#)
Please read our [Privacy Policy](#)



Sign Up

Let's get started.

First name

Last name

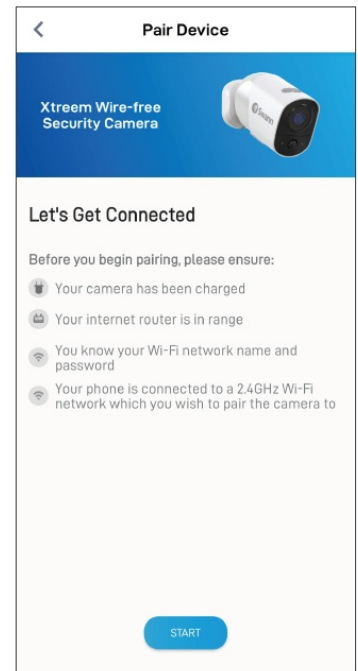
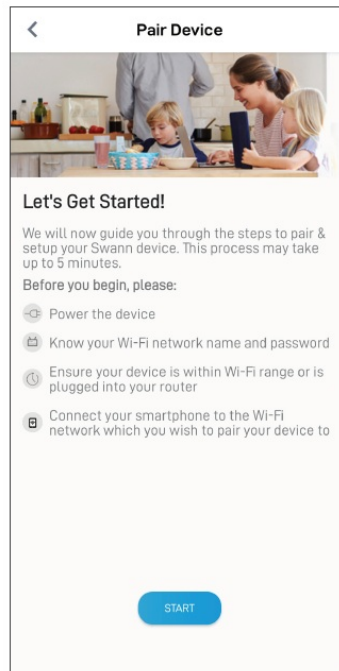
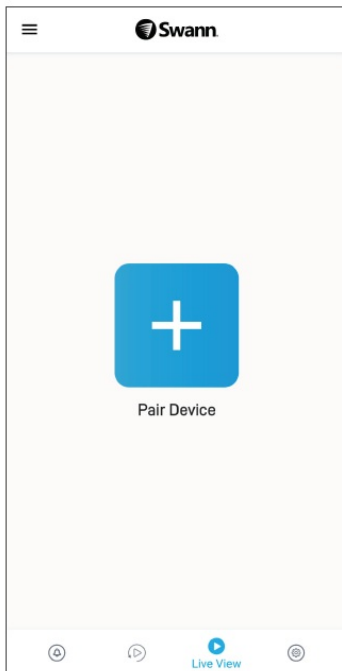
Enter your email address

Enter a password

Please confirm password

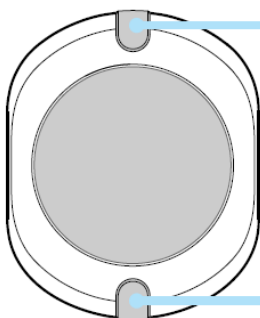
NEXT

3. Launch the Swann Security app and sign in. Tap the Pair Device button on the screen (or tap the menu icon in the top left and select “Pair Device”) and follow the in-app instructions to set up your new camera. Before you begin, have the camera with you, be close to your router, and have your Wi-Fi network information (including password) handy. Please note that the camera can connect to a 2.4GHz Wi-Fi network only.

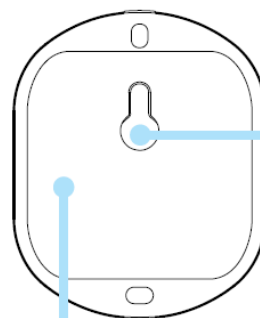


The camera can be conveniently placed on a table or shelf or mounted on the wall using the magnetic stand (supplied) or the screw-in stand (optional accessory which can be purchased separately). Because the camera is completely wire-free, you'll have a lot of flexibility on where you can put it. Choose a location with strong, reliable Wi-Fi reception to ensure best video streaming and battery performance. As a general rule, the nearer your camera is to your router, the better the wireless connection quality.

Mounting the magnetic stand



A. With screws (Recommended method for permanent mounting)
Remove the rubber pads to reveal screw holes. Then attach the magnetic stand to the surface using supplied screws (2.8mm x 21.6mm) and plugs (if mounting on drywall or concrete). Reinsert the rubber pads.



B. With keyhole slot
There is a keyhole slot on the back of the magnetic stand where a screw fits for hanging on the wall. Insert screw (4mm x 18.2mm) and plug (if mounting on drywall or concrete) into the mounting point, leaving a bit of gap between the wall and the screw head. Then fit the magnetic stand over the screw head through the keyhole slot and slide down to make sure it sits securely.

C. With double-sided mounting tape (For indoor use only)
Do not use on rough surfaces. Works best on smooth, dry surfaces (use rubbing alcohol to clean surface, making sure it is cleared of any dirt).
Peel off liner on one side of the supplied mounting tape and apply it to the back of the magnetic stand.
Peel off opposite liner then using a firm amount of pressure, press the magnetic stand against the surface for 60 seconds. Allow 24 hours for the adhesive to fully cure before attaching the camera onto the magnetic stand.

IMPORTANT: Ensure that the surface and fixing points are strong enough to sustain the weight of the camera and magnetic stand.

Motion detection

- The camera's PIR motion sensor detects heat signatures of moving objects. You'll generally get good detection results by pointing the camera downwards at an angle where people will be moving across the coverage area before heading directly towards the camera.
- You can turn motion detection on or off, as well as adjust the sensitivity using the Swann Security app.

LED indicator guide

The LED light on the front of your camera helps inform you of what is happening with the device.

Solid Blue	USB Charging	Fast Blinking Blue	Connecting to Wi-Fi
Solid Red	Live streaming / Motion recording	Infrared LEDs Blinking	Firmware update in progress
Slow Blinking Blue	Wi-Fi Pairing mode		

Rebooting the camera

On rare occasions, it might be necessary to reboot your camera if it becomes unresponsive. A simple reboot can also fix connectivity issues quickly. Using a paper clip, press and release the Reset button. This powers off the camera. Then briefly press the SET button (for 1 second) to reboot the camera.

Swann Security app manual

While using the Swann Security app, you can access the Swann Security app manual (Menu > User Manual) at any time to learn more about using the app to view live video, playback event clips as well as customize various camera settings including camera name, sleep period, and motion sensitivity.

Have questions?

Visit our Support Center at support.swann.com. You can register your product for dedicated technical support, find troubleshooting articles, and more. Or email us at any time via: tech@swann.com

FCC STATEMENT

This equipment has been tested and found to comply with the limits for Class B digital devices, pursuant to part 15 of the FCC Rules. These limits are designed to provide reasonable protection against harmful interference in a residential installation. This equipment generates, uses, and can radiate radio frequency energy and, if not installed and used in accordance with the instructions may cause harmful interference to radio communications. However, there is no guarantee that interference will not occur in a particular installation. If this equipment does cause harmful interference to radio or television reception, which can be determined by turning the equipment off and on, the user is encouraged to try to correct the interference by one or more of the following measures:

- Reorient or relocate the receiving antenna
- Increase the separation between the equipment and the receiver
- Connect the equipment into an outlet on a circuit different from that to which the receiver is connected
- Consult the dealer or an experienced radio/TV technician for help.

This device complies with Part 15 of the FCC Rules. Operation is subject to the following two conditions: (1) this device may not cause harmful interference, and (2) this device must accept any interference received, including

interference that may cause undesired operation

FCC RF Radiation Exposure Statement Caution

To maintain compliance with the FCC's RF exposure guidelines, place the product at least 20cm from nearby persons.

- **WARNING:** Modifications not approved by the party responsible for compliance could void the user's authority to operate the equipment.
- **Frequency:** 2412MHz-2472MHz, Maximum radio-frequency power: $\leq 20\text{dBm}$

IC STATEMENT

This device complies with Industry Canada license-exempt RSS standard(s). Operation is subject to the following two conditions: (1) this device may not cause interference, and (2) this device must accept any interference, including interference that may cause undesired operation of the device.

The device is in compliance with RF field strength limits, users can obtain Canadian information on RF exposure and compliance. This Class B digital apparatus complies with Canadian ICES-003. This equipment complies with IC radiation exposure limits set forth for an uncontrolled environment. This equipment should be installed and operated with a minimum distance of 20cm between the radiator & your body.

CE DECLARATION OF CONFORMITY

Hereby, Swann Communications, declares that this product is in compliance with the essential requirements and other relevant provisions of Directive 2014/53/EU. The full text of the EU declaration of conformity is available at the following internet address: www.swann.com/uk/compliance

INSTALLATION REMINDER

- Installation of this camera should only be performed by a qualified technician. Failure to install this camera properly may cause injuries and damage to the personnel and the camera itself. Check the installation regularly and maintain the camera periodically to ensure the best working condition.
- Use only the accessories approved or recommended by the manufacturer to mount this camera. We had enclosed 3pcs screws (2pcs x 2.8mm x 21.6mm and 1pc x 4mm x 18.2mm).
- Using wrong or unsuitable accessories may cause the camera to fall and result in serious personal injuries. Make sure that the surface and fixing points are strong enough to sustain the weight of the camera.
- The installation height of this camera should be below 2 meters.
- To reduce the risk of electric shock, No user-serviceable parts are inside. Refer servicing to qualified service personnel.
- To prevent personal injuries, mounting the camera or installing desktop stands is required before use.

Documents / Resources



Xtream® Security Camera
Cámara de seguridad Xtream®
Cámara de segurança Xtream®
Telecamera di sorveglianza Xtream®
Xtream® Überwachungskamera

Get the App
on the App Store
or Google Play

Swann SWIFIXTRCAM security camera [pdf] User Manual

SWIFIXTRCAM security camera, security camera