



SWANDOO MARIE 3 i-Size Child Set User Manual

[Home](#) » [SWANDOO](#) » SWANDOO MARIE 3 i-Size Child Set User Manual 



Say 'Hi' to Marie!
360° peace of mind.
MARIE³
i-Size Child Seat

Contents

- 1 MARIE 3 i-Size Child Set
- 2 PRODUCT PARTS
- 3 INSTALLING IN THE VEHICLE
- 4 PLACING THE SIDE IMPACT BUDDY
- 5 ROTATING THE SEAT
- 6 CHILD DIRECTION
- 7 PLACING YOUR BABY
- 8 ADJUSTING THE HEADREST
- 9 ADJUSTING THE RECLINE POSITION
- 10 REMOVING FROM THE VEHICLE
- 11 REMOVING THE FABRICS FOR WASHING
- 12 IMPORTANT INFORMATION
- 13 PRODUCT LIFETIME WARRANTY
- 14 Documents / Resources
 - 14.1 References

MARIE 3 i-Size Child Set



<https://swandoo.com/qr/marie-user-manual/>



FOR THE LITTLE AND NOT SO LITTLE ONES

40 –105 cm, up to 18 kg



360 DEGREE PEACE OF MIND

Rearward and forward facing

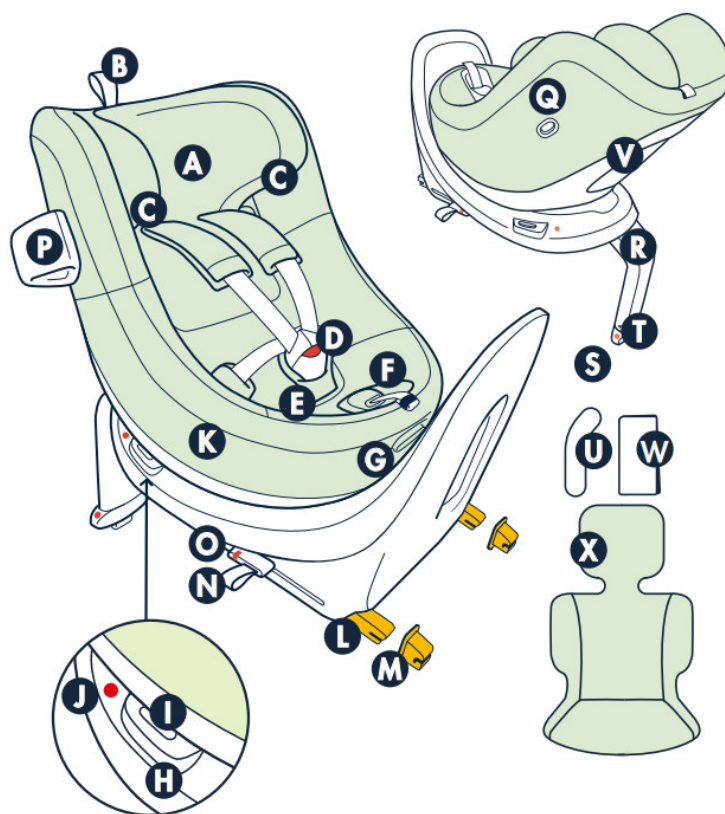


I-SIZE, ECE R129/03

Certified to meet the most demanding safety regulations



PRODUCT PARTS



A Adjustable headrest B Headrest strap adjuster C Magnetic harness holder D Harness buckle E Crotch pad F Harness adjuster G Recline trigger H Rotation button I Rotation button top safety lock J Rotation safety indicator K Fabric cover L ISOFIX connector	M ISOFIX guides N ISOFIX connector sliding and unlock trigger O ISOFIX safety indicator P Side Impact Buddy Q Side Impact Buddy socket R Support leg S Colour indicator for support leg T Support leg's adjustment button U Fabric cover installation tool V Pocket compartment for user manual W User manual X Newborn pillow
---	---

Please find the latest version of this user manual online at swandoo.com/marie-user-manual. The latest digital version may contain important updates and overrules previous versions. In case of discrepancy, the latest update should be followed.

Please note: We give our best creating this content in multiple languages. We ask for your understanding in case of translation errors; please get in touch with us with improvement ideas, or if you spot any mistakes. Thank you! For maximum protection and comfort of your child, it is essential that you read through the entire manual carefully and follow all instructions on how to install and use this product.

Always keep it in the storage compartment of your seat. Also read the instructions in your vehicle owner's manual related to child safety seats. If not operated correctly it may result in serious injuries or even death.

NOTICE

This is an i-Size Enhanced Child Restraint System.

It is approved according to UN Regulation No.

129, for use in, i-Size compatible vehicle seating positions as indicated by vehicle manufacturers in the vehicle users' manual. If in doubt, consult either the enhanced child restraint system manufacturer or the retailer.

Only use this product on a forward facing seat.

Do not place rear facing child seats on front seats with activated airbags. This product has been approved according to the strictest European safety standards (ECE R129/03) and is suitable for rearward-facing (40 –105 cm) and forwardfacing (76 –105 cm) driving position with ISOFIX anchoring system and support leg.

! Important: Do not use forward-facing before the child's age exceeds 15 months. The correct fitting of the

ISOFIX anchoring system and support leg is of vital importance for the safety of your child. Please check your vehicle manufacturer's handbook to locate the ISOFIX anchor points.

This child seat may not fit in every vehicle. To find out if the seat fits your car, check swandoo.com/marie-isofix



<http://swandoo.com/marie-isofix>



INSTALLING IN THE VEHICLE



1. If needed place the two ISOFIX guides on both anchor points between the car seat and back. Fold out the support leg.
2. Extend the ISOFIX connectors by pulling the unlock trigger and sliding them out as far as possible.
3. Insert both connectors into the anchor points until you hear a "click".
4. Check that the safety indicators have turned green on both sides.
5. Place both hands on the child seat and push it against the vehicle seat until it is firmly positioned and tight to the seat.
6. Push the support leg's adjustment button and slide the leg downwards until it reaches the floor of the vehicle. The leg should be firmly pushed on the ground until the indicators turn green.




The safest place to install this product is in the rear seats of your vehicle.



However, if you need to install the seat in the front passenger seat, please ensure that the passenger seat is equipped with ISOFIX and ensure that the airbag is deactivated.



The child seat must be used only in vehicle seats equipped with ISOFIX connector and facing towards the driving direction.

 **Warning:** Watch your fingers when folding or unfolding the support leg.

The support leg must never be suspended in mid-air or supported by other objects. In case there is a storage compartment in the floor of the seat you must check your vehicle manual or contact the vehicle manufacturer and clarify if the leg can be placed on it.

Make sure that the support leg does not raise the child seat from the surface of the vehicle seat.

The child seat should always be installed correctly, even when not in use. In a crash or sudden stop, the unsecured seat may harm other occupants.

Do not place any objects in the foot well in front of the support leg.

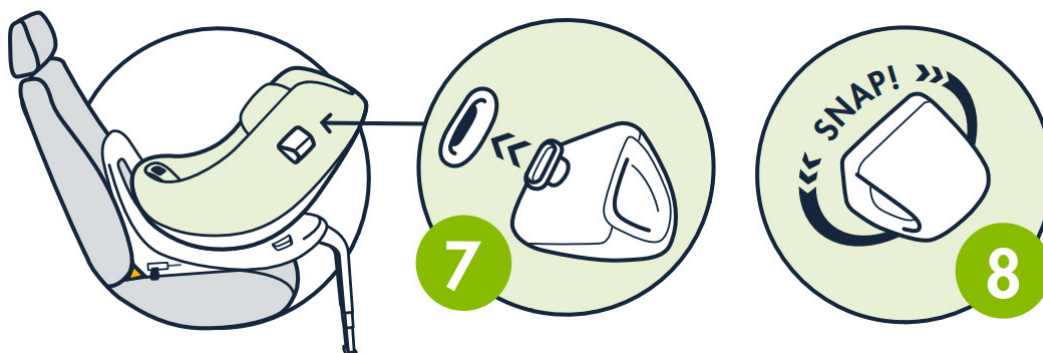
Prevent the product from becoming trapped or weighed down by luggage or any heavy objects.

Do not use this child seat with the vehicle seat belt.



Make sure that the product, its rigid items and plastic parts are located and installed in a way that they are not liable during everyday use of the vehicle, become trapped by a moveable seat or in a door of the vehicle.

PLACING THE SIDE IMPACT BUDDY



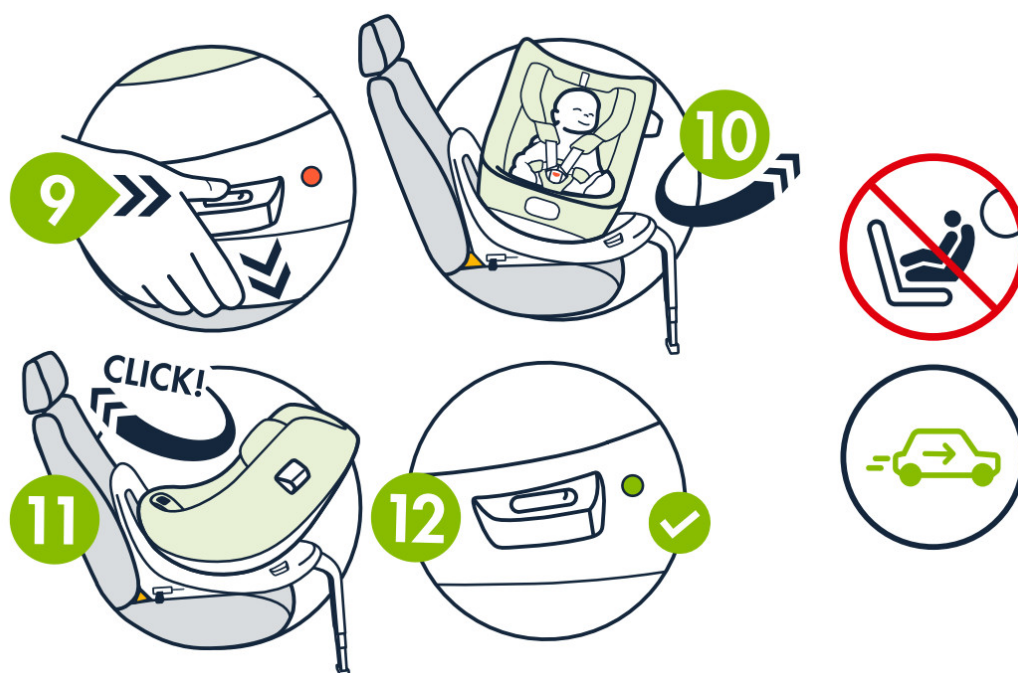
Marie 3 offers high-level integrated side impact protection. The Side Impact Buddy improves the protection even further.

7. Insert the Side Impact Buddy into the red oval socket on the side of the seat.
8. Rotate the Side Impact Buddy 90 degrees until it snaps in.

The Side Impact Buddy always has to be placed on the window side of the child seat and it may not fit or be compatible with every vehicle.



ROTATING THE SEAT



Marie 3 loves to twirl around...this child seat can rotate up to 360° from any recline position.

9. Slide the top safety lock and then push the rotation button.
10. Rotate Marie 3.
11. After the child is out, or in, and the harness secured rotate the seat back in place until you hear a “click”.

12. check that the seat is properly locked and that the safety indicator is green.

CHILD DIRECTION

REARWARD-FACING 40 –105 CM UP TO 18 KG

Rearward-facing is mandatory up to an age of 15 months, and recommended up to an age of 4 years.

FORWARD-FACING 76 –105 CM UP TO 18 KG

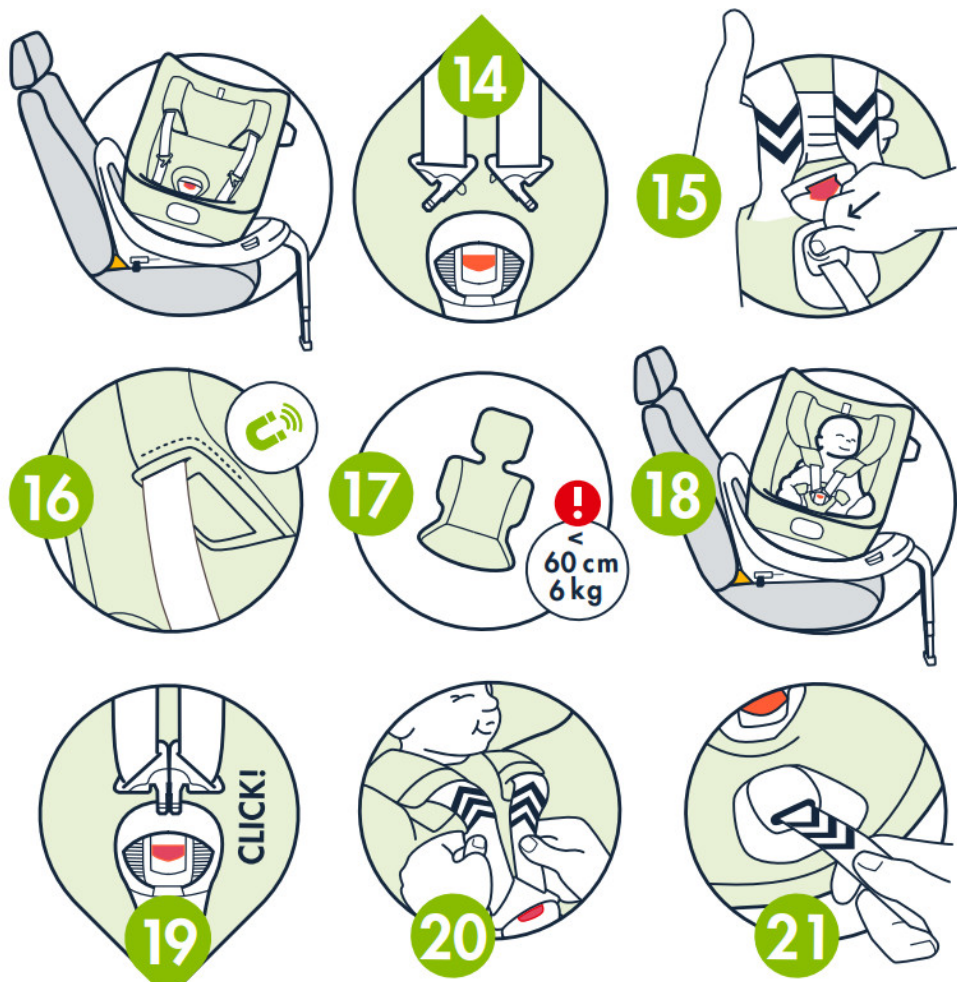
Marie 3 can be used both rearward and forward facing depending on the size and age of your child.

The Child Direction Assistance function makes sure that you keep the rearward facing travel position until your baby reaches 76 cm. This helps you follow the 15 months rearward facing requirement and keeps your little one safer.

13. Only when your child is taller than 76 cm, and Marie 3's headrest in the right position, will you be able to unlock the forward facing position.



PLACING YOUR BABY



To make things easy and comfortable, start by turning the seat into boarding position.

14. Press the red button of the buckle to open it.
15. Press the harness adjuster button and pull the harness from both sides to make enough room for the child.
16. Stick the shoulder pads to the magnetic latch on the bottom side surfaces of the headrest.
17. If your baby is below 60 cm in height (6 kg) insert the included Newborn Pillow.
18. Place your little darling in the seat.
19. Overlap the two top buckle parts and insert them until you hear a “click”.
20. Pull the harness upwards to reduce the slack on top of the child’s legs.
21. **Important!** Pull the harness adjuster strap to tightly secure the child.

❗ Try to pinch the harness with your fingers. If you can grasp any webbing, tighten up the harness and test again.



Please always use the included newborn pillow for babies below 60 cm (6 kg).

Never use this seat if the harness is damaged, twisted or worn-out.



Make sure the seat harness is worn low on the hip level and fastened tightly around the pelvis of your child.
If you cannot tighten the seat appropriately, stop using the seat immediately and contact your retailer.
Do not leave your child unattended in the child seat, not even for a short time.



You shouldn't have your child sitting in the child seat for more than two hours at a time.



Always cover the product when exposed to direct sunlight.

Parts of the seat may get too hot for your child's skin.

Check the temperature before placing your child into the seat.

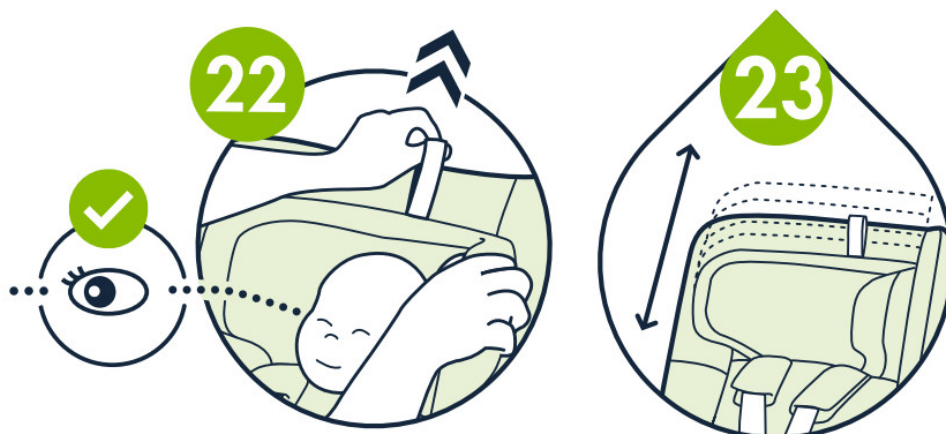
Make sure the child seat is free from toys or objects.

Always secure your baby with the seat harness. Never take your child out of the child seat when the vehicle is moving.

Do not carry this child seat with your child in it.

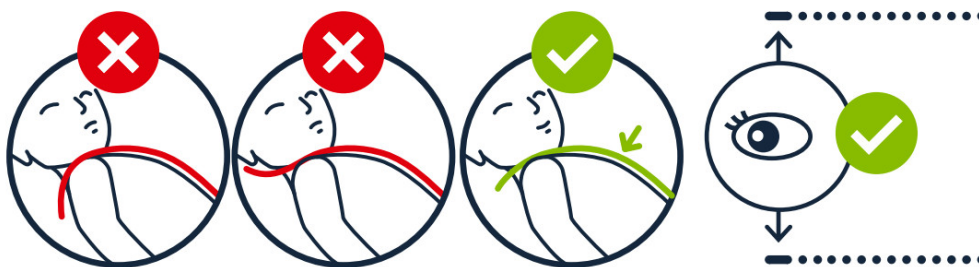


ADJUSTING THE HEADREST



Adjust the headrest position whilst your baby is in the child seat.

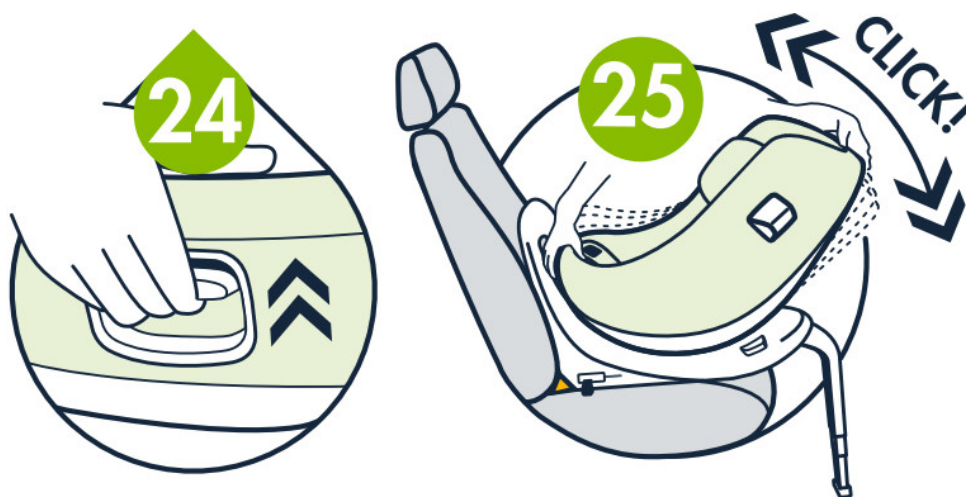
22. Pull the headrest strap adjuster.
23. Move the headrest then slide it upward or downward. Adjust the headrest until the eye indicator matches the eye level of your baby



- ! Pay attention to the harness position on the child's shoulder to correctly set the headrest.
- Marie 3's headrest contains magnets which can influence electronic apparatus such as pacemakers.



ADJUSTING THE RECLINE POSITION



24. Press the recline trigger to adjust to the desired position.
25. There are 4 recline positions for rearwardfacing direction and 4 for forward-facing direction. Wait for the "click" that confirms the correct placement of the child seat.

- ! Newborns and infants (up to around 1 year of age) who are not able to sit by themselves, should always be transported rearward-facing in the flattest recline position.

Always check and be sure that the child seat is correctly adjusted before you start driving.

Do not adjust the child seat position while driving.



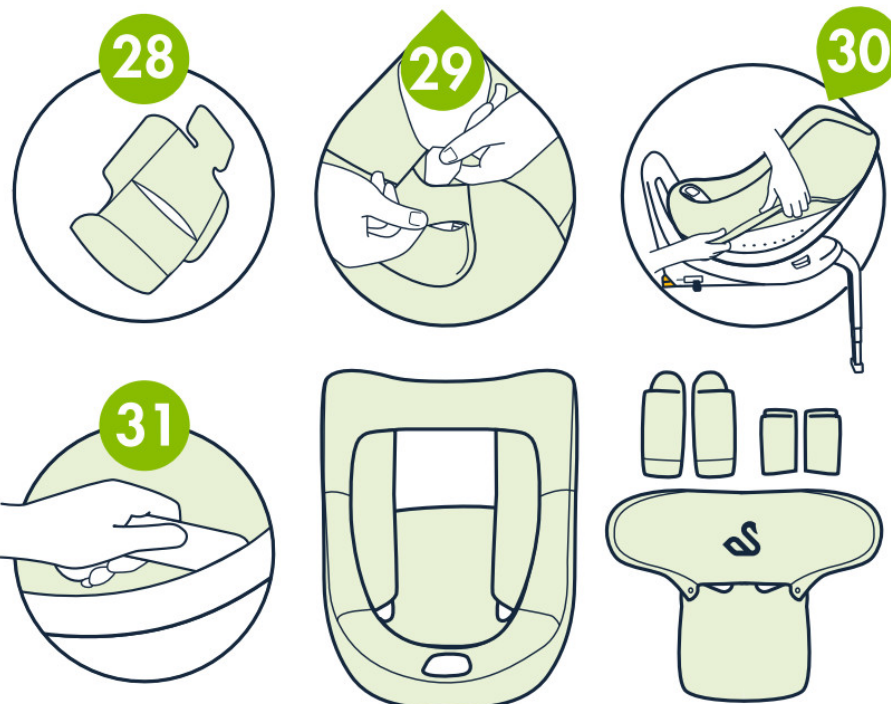
REMOVING FROM THE VEHICLE



26. Pull both triggers, on each side of the child seat, at the same time until you hear both ISOFIX connectors unhook...
27. and slide them backwards to disconnect them.



REMOVING THE FABRICS FOR WASHING



28. If in use, remove the newborn pillow and open the back pocket to remove the padding.
 29. Remove the crotch strap from the fabric and the four harness covers by opening them.
 30. Now the best part...Loosen the whole cover by lifting it up from the edges. Pay attention around the side impact buddy socket and the recline trigger. Remove the cover by pulling it up. Ta-daaaa!
- Simple, right? We certainly hope so.

REPOSITIONING OF THE FABRICS

31. Find the fabric installation tool on the left side behind the headrest. Tuck the fabric edge into the right position.
- ! Make sure to put the covers back the same way they previously were. You can follow the previous steps in reverse order to make sure everything is in place.

WASHING INSTRUCTIONS



Please wash before first use!

Machine washable: Fine/delicate programme.

Hand wash recommended.

Use mild detergents. Do not dry clean, bleach or tumble dry. Keep away from your dog, your cat and direct heat.

Do not use bleach, abrasive, upholstery or aggressive cleaning agents.


Clean the plastic parts and the integrated harness system with a mild detergent and warm water. Do not use lubricants.

! Washing this fabric cover will not wash away your sins.

Wrinkles?

Remove any wrinkles from the fabric cover with a steamer. If you don't have one available, try the steam function of your iron instead.

While steaming, be sure not to touch any plastic parts of the seat with the iron. Please be careful with hot steam! Keep it far from your body, your cat, your dog, mother-in-law, house plants... etc. You get the point

 The fabric cover is a safety feature and the child seat should never be used without it. If the cover needs replacing at any time, only use official Swandoo Marie 3 fabrics.

IMPORTANT INFORMATION

Never use the product in any configuration or assembly method not shown in the instructions.

Do not use any load bearing contact points other than those described in the instructions and marked on the child restraint.

Make sure luggage or other objects are properly secured. Unsecured luggage may cause severe injuries to children and adults in an accident.

Only adults should fix or adjust the product. Do not make any changes to the product. This could affect its performance and make it unsafe.

Do not use the product with damaged or missing parts.

Do not use a second-hand child seat or child seat whose history you do not know. It is dangerous to use unauthorized or changed products!

Do not use the product if there is any evidence of unlicensed modification.

Do not remove any labels on the product. They contain important information.

Your Swandoo Marie 3 must undergo regular maintenance.

Never use the seat as a means for transporting anything.

In the event of an emergency, it is important to release the child quickly. The buckle is not fully tamper-proof and your child should never play with it.

This product should be replaced when it has been subject to violent stress in an accident.

PRODUCT LIFETIME WARRANTY

Our warranty reflects our confidence in the high quality of our design, engineering, production and product performance. In case of a defect, please present your proof of purchase and the product's serial number which is located on the bottom of the product.

The warranty covers all manufacturing and material defects existing at the date of purchase, or appearing within 2 years from the date of receipt from the retailer. This warranty does not cover damages caused by normal wear and tear, negligence, accidents, abuse, use of unauthorized accessories or a result of failing to comply with the user manual.

You can extend to a product lifetime warranty for free, simply by registering your product online within 3 months from the date of purchase. In order to do so, peel off the warranty sticker that you find on Marie 3 and scan the QR-Code. You can also visit: swandoo.com/register-product.

If you have any questions or concerns about this product, or this user manual, please contact us before using the product.

We look forward to hearing from you!

If you have any questions, please contact our team.

We are happy to hear from you!

hello@swandoo.com

+49 89 322096393

ALWAYS WITH YOU

www.swandoo.com

© 2024 Swandoo, All rights reserved

Swandoo GmbH

Landstrasser Hauptstrasse 71/3/101

1030 Vienna


Austria

EMEA Sales and Client Service:

Noerdliche Muenchner Strasse 47
82031 Gruenwald, Munich
Germany
Produced in:
199 Jinfeng Road, High-tech District
Suzhou City, 215009 Jiangsu, China



Documents / Resources

 <p>SWANDOO</p> <p>MARIE® i-Size Child Seat</p> <p>FOR THE LITTLE AND NOT SO LITTLE ONES 40-105 cm, up to 18 kg</p> <p>IS09 BUILT-IN RECLINE OF 100° Reclined and forward facing</p> <p>IS09 ECE R129 03 Complies with the most demanding safety regulations</p>	<p>SWANDOO MARIE 3 i-Size Child Set [pdf] User Manual MARIE 3, MARIE 3 i-Size Child Set, i-Size Child Set, Child Set, Set</p>
---	---

References

- [Swandoo | Award winning child safety seats](#)
- [Marie i-Size Child Seat - swandoo.com/marie-isofix/ - Swandoo](#)
- [Marie i-Size Child Seat - swandoo.com/marie-user-manual/ - Swandoo](#)
- [- Swandoo](#)
- [Swandoo | Award winning child safety seats](#)
- [Marie i-Size Child Seat - swandoo.com/marie-user-manual/ - Swandoo](#)