



# SWAGTEK 41SGY2 Logic Smart Gyrocam Camera User Guide

[Home](#) » [swagtek](#) » SWAGTEK 41SGY2 Logic Smart Gyrocam Camera User Guide 

## Contents

- [1 SWAGTEK 41SGY2 Logic Smart Gyrocam Camera](#)
- [2 WHAT'S IN THE BOX](#)
- [3 DESCRIPTION](#)
- [4 INSTALL](#)
  - [4.1 QR CODE CONFIGURATION Getting started](#)
- [5 FAQ](#)
- [6 Functions](#)
- [7 FCC Statement](#)
- [8 Documents / Resources](#)
- [9 Related Posts](#)

**swagtek**

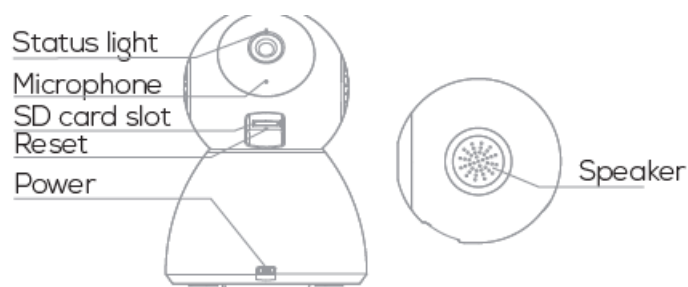
## SWAGTEK 41SGY2 Logic Smart Gyrocam Camera



### WHAT'S IN THE BOX

Consult the checklist below for all components:

- Smart Gyrocam
- Power adapter
- USB cable
- Bracket
- Screws
- Pin
- I/M



### DESCRIPTION

**Power:** DC 5V±10%

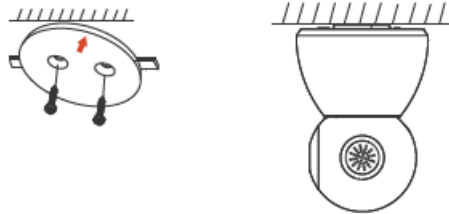
**Status light:**

- Red light solids on: the camera network is not normal
- Blinking red light: awaiting WiFi connection
- Blue light solids on: camera running
- Blinking blue light: currently connecting (faster blinking)

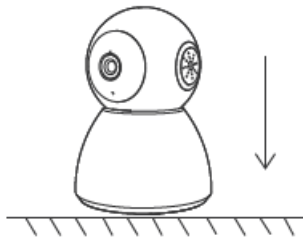
- Microphone: Captures sound for your video
- SD card slot: Supports local SD Card storage (Max.128G)
- Reset: Press and hold for 5 seconds with pin to reset the camera (if you have modified settings, they will return to factory defaults)

## INSTALL

1. Use the included mounting bracket to fix the camera to a clean surface.



2. Or, put the camera on a flat surface.



## CONNECT

### Download

Life Konnect is available for both iOS and Android OS. Search the name 'Life Konnect' in App Store or Google Play, or scan upper QR-Code to download the App.



For App Store



For Google Play Store

### Set up router

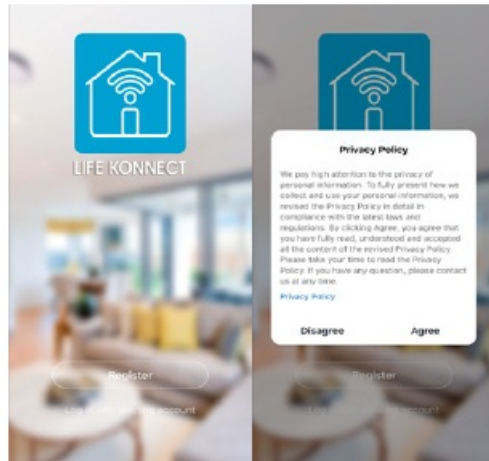
This device only supports 2.4GHz frequency band router, does not support 5GHz frequency band router, please set the relevant parameters of the router before WiFi configuration, WiFi passwords do not include special characters such as ~!@#\$\$%^&\*(). When the device is configured in WiFi, the mobile phone and device are as close as to the router, which can speed up the configuration of the device.



## REGISTRATION PROCESS

### Step 1

Open the Life Konnect App, click “Register”, read the “Privacy Policy” and click “Agree”.



### Step 2

Input a legal and valid Mobile number or Email address and click “Continue”. Input the Verification Code, then log in the app.

Register

Canada +1

Mobile number/Email

Continue

☒ I agree with Service Agreement and Privacy Policy

Verification Code

Verification code has been sent to: admin@gmail.com, Resend (56s)

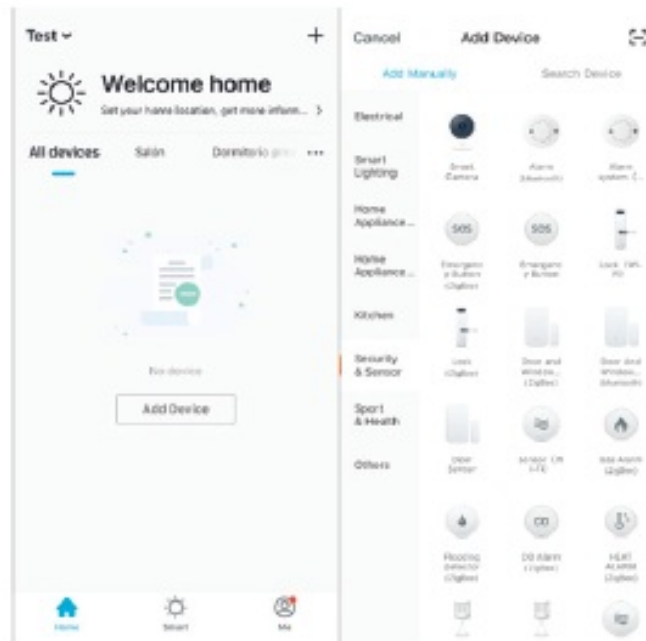
## QR CODE CONFIGURATION Getting started

1. Please follow the instructions and make sure the passwords are input correctly.
2. One device can only be added with one App account, if the device has been added with another account already, then it can't be added to any another account.
3. The device will be unbound from the previous account after been deleted from the App. Further, the device will be reset automatically once from blue light to red light.

## Process

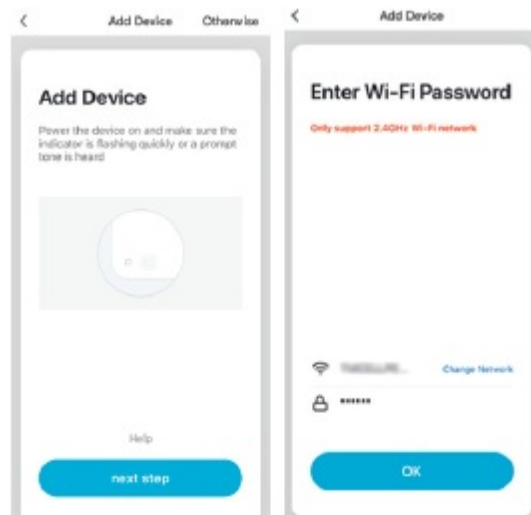
### Step 1

Open the Life Konnect App, click “+” or “Add Device”. Then go to “Security & Sensor” and select “Smart Camera”



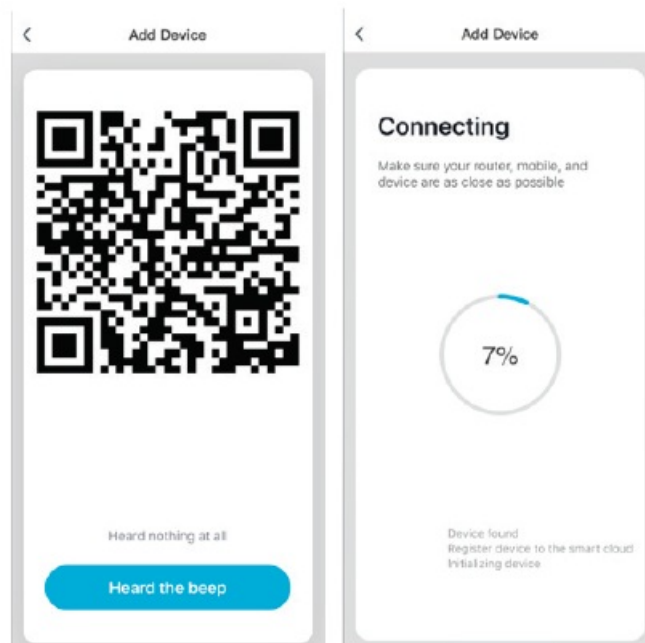
## Step 2

Turn on the device on and make sure the indicator is flashing quickly or a prompt tone is heard. Select “Next step” and input the Wi-Fi password.



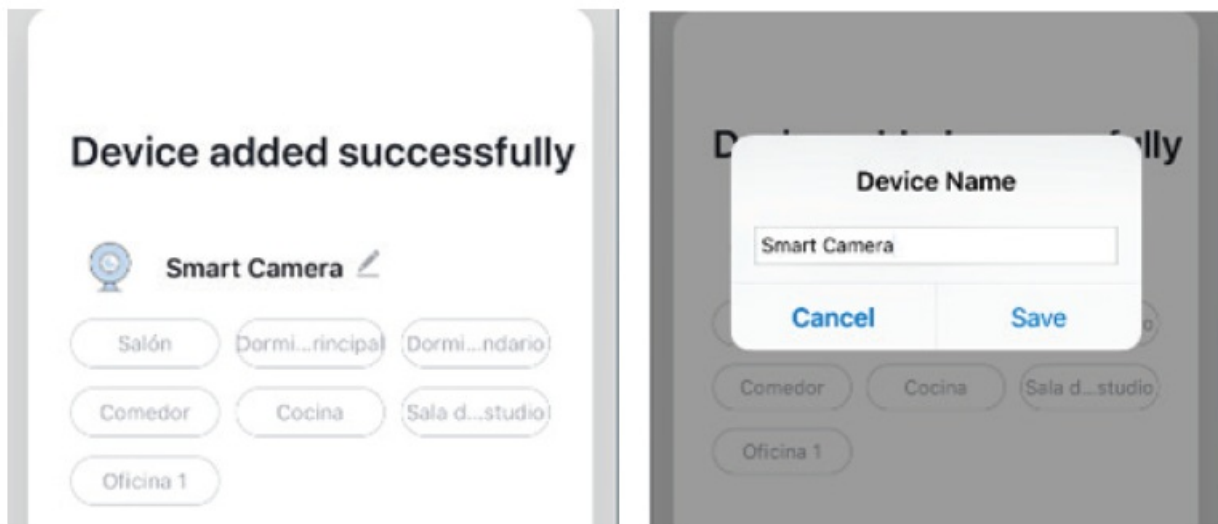
## Step 3

Scan the QR Code with your device. (You can change the network connection), once you hear a prompt tone select “Heard the beep”. The set up should take around 30 seconds.



#### Step 4

Once the device is added the device nickname can also be changed in this interface.



#### FAQ

##### Q: The device cannot be previewed properly?

A: Check whether the network is normal, you can place the camera close to the router, and if not, it is recommended to reset the device and add it again.

##### Q: Why is it still in the list of devices after resetting?

A: The reset device only resets the network configuration of the camera, but cannot change the configuration on the App, remove the camera, and must be deleted by the App.

##### Q: How to cut the camera network to another router?

A: First remove and reset the device on the App and then configure the device again by the App. Q: Why doesn't the device identify the SD card? A: It is recommended to plug in SD card after power cut. Confirm whether the SD card is normally available and the format is FAT32. And the TF card can't be identified when the internet environment is not good.

**Q: Why I can't get the notifications with my cell phone App?**

A: Please confirm that the App has been running on the phone, and the relevant reminder function has been opened; Message notification and authority confirmation in the mobile phone system have been opened.

**Functions**

1. Please follow the instructions and make sure the passwords are input correctly.
2. One device can only be added with one App account, if the device has been added with another account already, then it can't be added to any another account.
3. The device will be unbound from previous account after been deleted from the App. Further, the device will be reset automatically once from blue light to red light.

**Pan/Tilt**

Rotate your camera by sliding on your smartphone, providing you with 360 degrees of vision.

**Video flip**

Flip your video stream up or down for maximum flexibility.

**Motion detection**

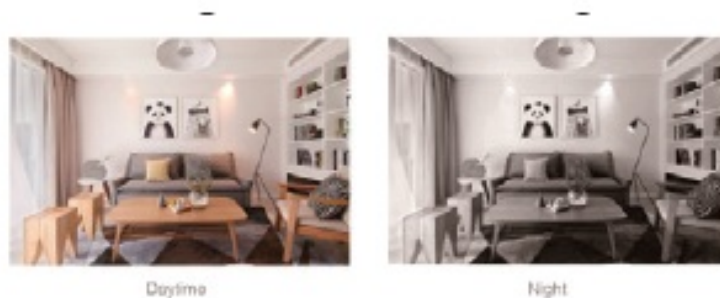
Built-in motion sensors detect movement, and the camera will send you push notifications and app alerts.

**Record**

Support 24H continuous recording with high capacity SD storage or Cloud storage.

**Day & Night**

Never miss a moment, even in complete darkness, with powerful night-vision technology.

**FCC Statement**

This equipment has been tested and found to comply with the limits for a Class B digital device, pursuant to part 15 of the FCC Rules. These limits are designed to provide reasonable protection against harmful interference in a residential installation. This equipment generates, uses and can radiate radio frequency energy and, if not installed and used in accordance with the instructions, may cause harmful interference to radio communications. However, there is no guarantee that interference will not occur in a particular installation. If this equipment does cause harmful interference to radio or television reception, which can be determined by turning the equipment off and on, the user is encouraged to try to correct the interference by one or more of the following measures:

- Reorient or relocate the receiving antenna.
- Increase the separation between the equipment and receiver.
- Connect the equipment into an outlet on a circuit different from that to which the receiver is connected.

- Consult the dealer or an experienced radio/TV technician for help. FCC Radiation Exposure Statement

### FCC Radiation Exposure Statement


This device complies with FCC radiation exposure limits set forth for an uncontrolled environment and it also complies with Part 15 of the FCC RF Rules. This equipment must be installed and operated in accordance with provided instructions and the antenna(s) used for this transmitter must be installed to provide a separation distance of at least 20 cm from all persons and must not be co-located or operating in conjunction with any other antenna or transmitter. End-users and installers must be provided with antenna installation instructions and consider removing the no-collocation statement.

This device complies with Part 15 of the FCC Rules. Operation is subject to the following two conditions:

1. this device may not cause harmful interference, and
2. this device must accept any interference received, including interference that may cause undesired operation.

Caution! Any changes or modifications not expressly approved by the party responsible for compliance could void the user's authority to operate the equipment.

### Documents / Resources

	<a href="#">SWAGTEK 41SGY2 Logic Smart Gyrocam Camera</a> [pdf] User Guide 41SGY2, O5541SGY2, 41SGY2 Logic Smart Gyrocam Camera, 41SGY2, Logic Smart Gyrocam Camera
---	--