




SW-MOTEC STP.07.176.11001 Slider Set for Front Axle Instruction Manual

[Home](#) » [SW-MOTEC](#) » SW-MOTEC STP.07.176.11001 Slider Set for Front Axle Instruction Manual 



Contents

- [1 SW-MOTEC STP.07.176.11001 Slider Set for Front Axle](#)
- [2 MOUNTING INSTRUCTIONS](#)
- [3 SAFETY ALERT SYMBOL](#)
- [4 PARTS LIST](#)
- [5 MOUNTING](#)
- [6 PRODUCT SPECIFIC INFORMATION](#)
- [7 Documents / Resources](#)
- [8 Related Posts](#)

SW-MOTEC STP.07.176.11001 Slider Set for Front Axle



MOUNTING INSTRUCTIONS

Slider set for the front axle

Thank you for choosing this premium product from SW-MOTECH. Please carefully read and understand all instructions, safety messages and warnings in this mounting instruction prior to installation and use of this product to avoid injury.

This product was developed for vehicles in their factory setting. Compatibility with original accessory parts or other manufacturers' accessory parts is not guaranteed. Visit our webshop for additional information, such as application charts and PDF mounting instructions. Any other documents that may be required (e.g. ABE certifications), are also available for download at our webshop. Keep these mounting instructions as reference. SW-MOTECH assumes no liability for damage caused by improper installation and/or maintenance work!

SAFETY ALERT SYMBOL

- This safety alert symbol is used throughout these mounting instructions to warn of the possibility of death, bodily injury or other warnings. The words DANGER,
- WARNING and CAUTION are used with this safety alert symbol to convey important safety messages and information related to the installation and use of this product. These words along with the safety alert symbol mean:
- DANGER: Indicates a hazardous situation that, if not avoided, will result in death or serious injury!
- WARNING: Indicates a hazardous situation that, if not avoided, could result in death or serious injury!
- CAUTION: Indicates a hazardous situation that, if not avoided, could result in minor or moderate injury!
- NOTICE: Important information, but not death or injury related [property damage only]!
- WARNING: The installation and/or maintenance of this product requires advanced mechanical skills, the proper tools, and a thorough understanding of tool use and torque specifications.

For your own safety, SW-MOTECH recommends having installation and/or maintenance carried out by a qualified and certified motorcycle mechanic.

- WARNING: Should you choose to self-install this product, carefully and completely read all installation and safety instructions before installation and use, and follow all the directions and safety precautions given in the mounting instructions to avoid serious injury or death. Also pay attention to all relevant information in the vehicle manual during installation and use. IF YOU DO NOT UNDERSTAND ANY PART OF THESE INSTRUCTIONS OR NEED CLARIFICATION OF ANY INSTRUCTIONS,

DO NOT ATTEMPT TO MOUNT THIS PRODUCT WITHOUT CONTACTING SW-MOTECH FOR ASSISTANCE.

- PREPARATION: Read the mounting instructions carefully and make sure that all items of the parts list are included.
- CAUTION: Make sure that your vehicle is parked safely and cannot fall over. Turn off the engine and remove the ignition key. Let the engine/exhaust cool off if necessary. Disconnect the vehicle battery when working on the electrical system. Use appropriate tools and wear always safety glasses and hand protection. Have another person help you.
- MOUNTING: All parts and connections removed from the vehicle must be reinstalled in accordance with the vehicle manufacturer specifications or replaced by parts and hardware delivered by SW-MOTECH.
- WARNING: Secure all threads, unless otherwise specified, with medium- strong strength liquid thread locker. Torque specifications undefined by SW-MOTECH must be obtained from the vehicle manufacturer or by a

- **FUNCTION CHECK:** After installation also make sure that no moving parts are obstructed, and function of the vehicle is not hindered in any way. Cables and hoses must not rub and/or be pinched.
- **WARNING:** Before starting to ride, perform a comprehensive check of all functions. After the first 50 km and then at regular intervals, check the tightening torque of all connections and the proper fit of the product. Installed accessories can change driving behavior/stability of the vehicle.

READ AND SAVE THESE MOUNTING INSTRUCTIONS

Schritt Step	Nr. No.	Art.-Nr. / Bezeichnung ^a Item No. / Description ^a	Artikel	Part	Anzahl ^b Quantity ^b	N·m ^c
1	(1)	GST.ST.08.320	Gewindestange; Länge 320 mm	Threaded Rod; length 320 mm	1 / 1	
	(2)	STP.00.176.027	Buchse, gestuft; links; Höhe 9 mm	Spacer, stepped; left; height 9 mm	1 / 1	
	(3)	STP.00.176.010	Buchse, gestuft; rechts; Höhe 19 mm	Spacer, stepped; right; height 19 mm	1 / 1	
	(4)	M8; DIN 439	Mutter, niedrige Form	Nut, low form	2 / 2	18
2	(5)	STP.00.176.004	Sturzpad	Slider	2 / 2	
	(6)	Ø 19 / ø 15,2 / h 4,4	Auflagebuchse; schwarz	Support Spacer; black	2 / 2	
	(7)	ø 8,4; DIN 9021	Unterlegscheibe; schwarz	Washer; black	2 / 2	
	(8)	M8; DIN 985	Mutter, selbstsichernd	Lock Nut	2 / 2	18
3	(9)	STP.00.176.005 / ...006	Abdeckkappe mit Feder	Cover Cap with Spring	2 / 2	

8.8

Regelgewinde / Coarse Thread Ø

M4

M5

M6

M8

M10

M12

Stahl FK 8.8 / Steel CL 8.8

N·m

2,8

5,5

9,6

23

46

79

10.9

Regelgewinde / Coarse Thread Ø

M4

M5

M6

M8

M10

M12

Stahl FK 10.9 / Steel CL 10.9

N·m

4,1

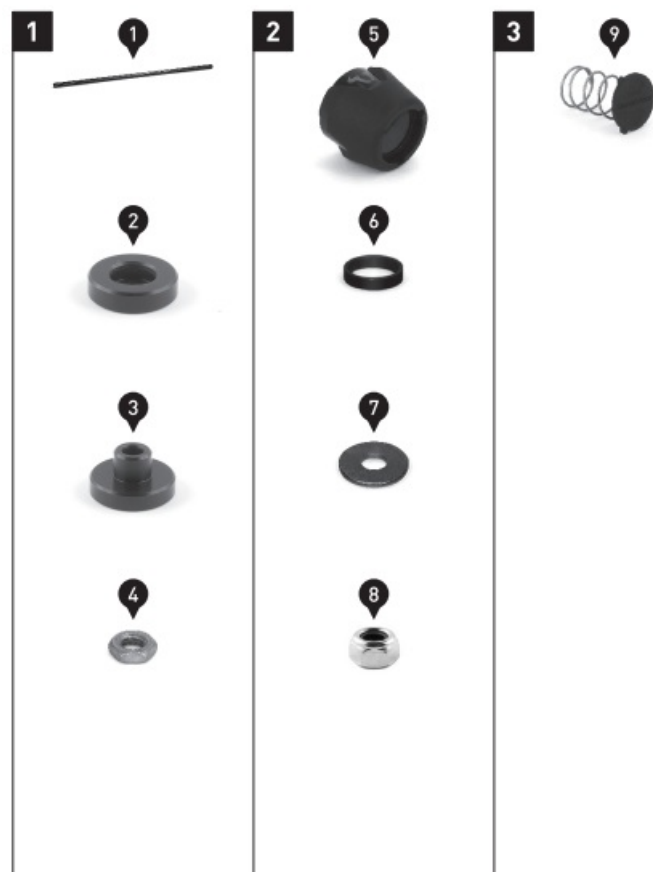
8,1

14

34

67

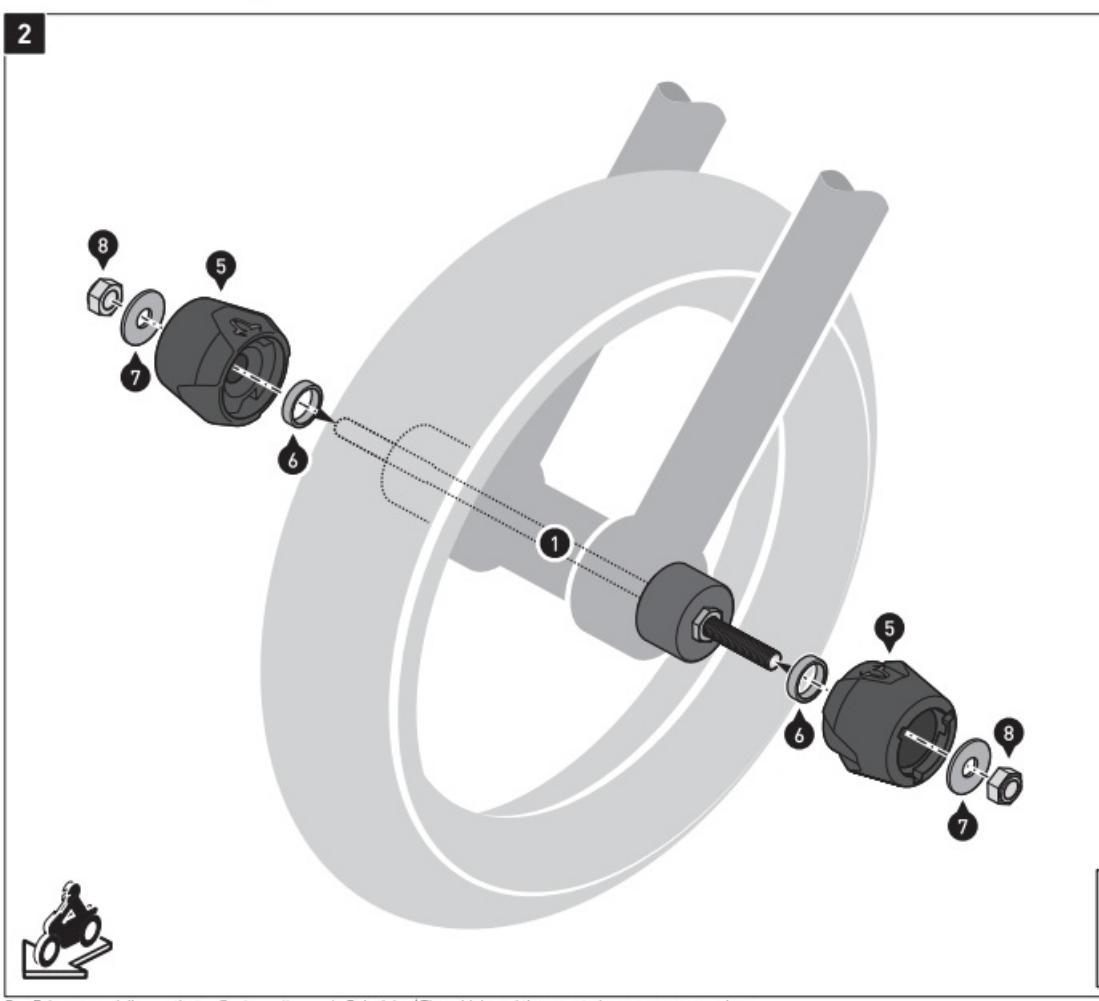
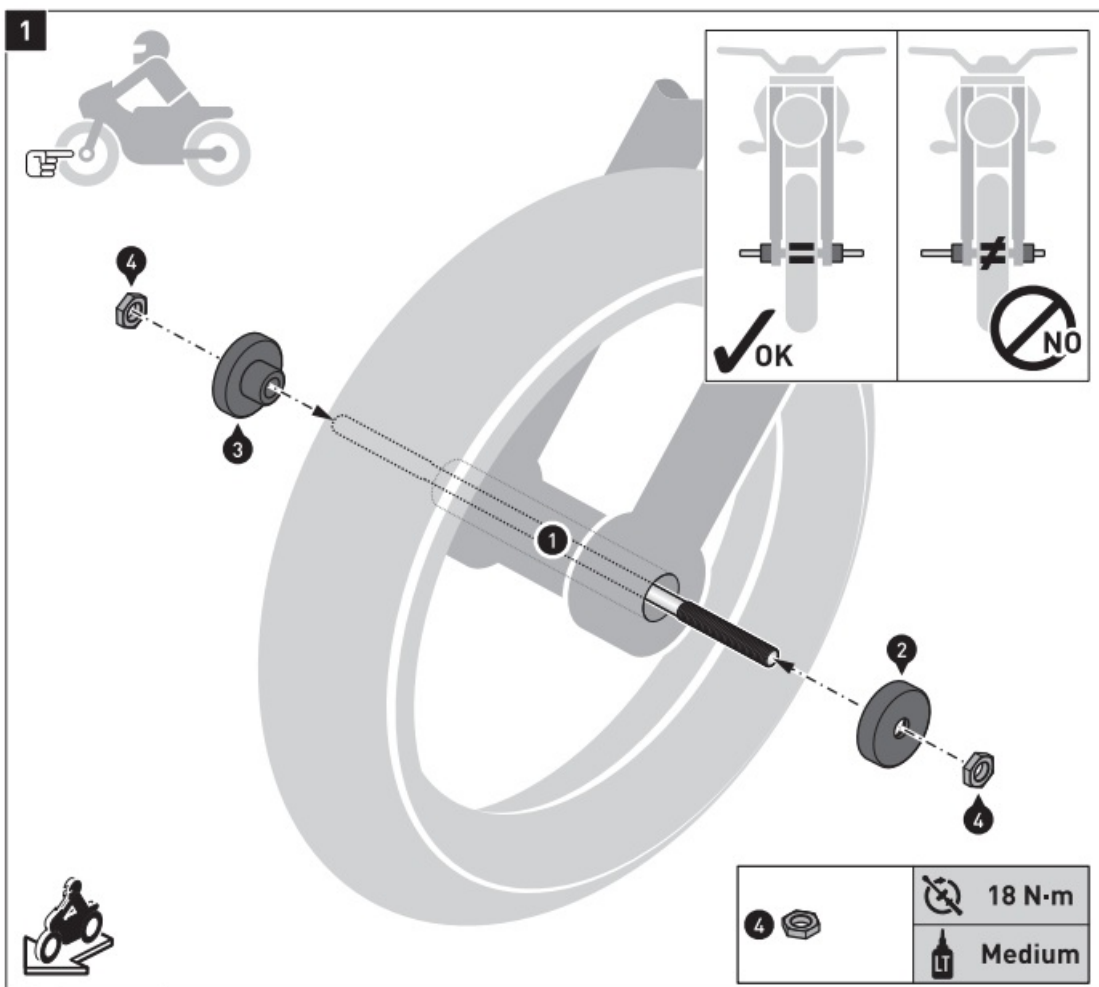
115



Note All torque measurements specifications: in Use the millimeters. torque b The defined second by vehicle number indicates manufacturer! the total The quantity standard of the torque part in this table delivery. can be No used to as long as it is within the vehicle manufacturer's specifications.

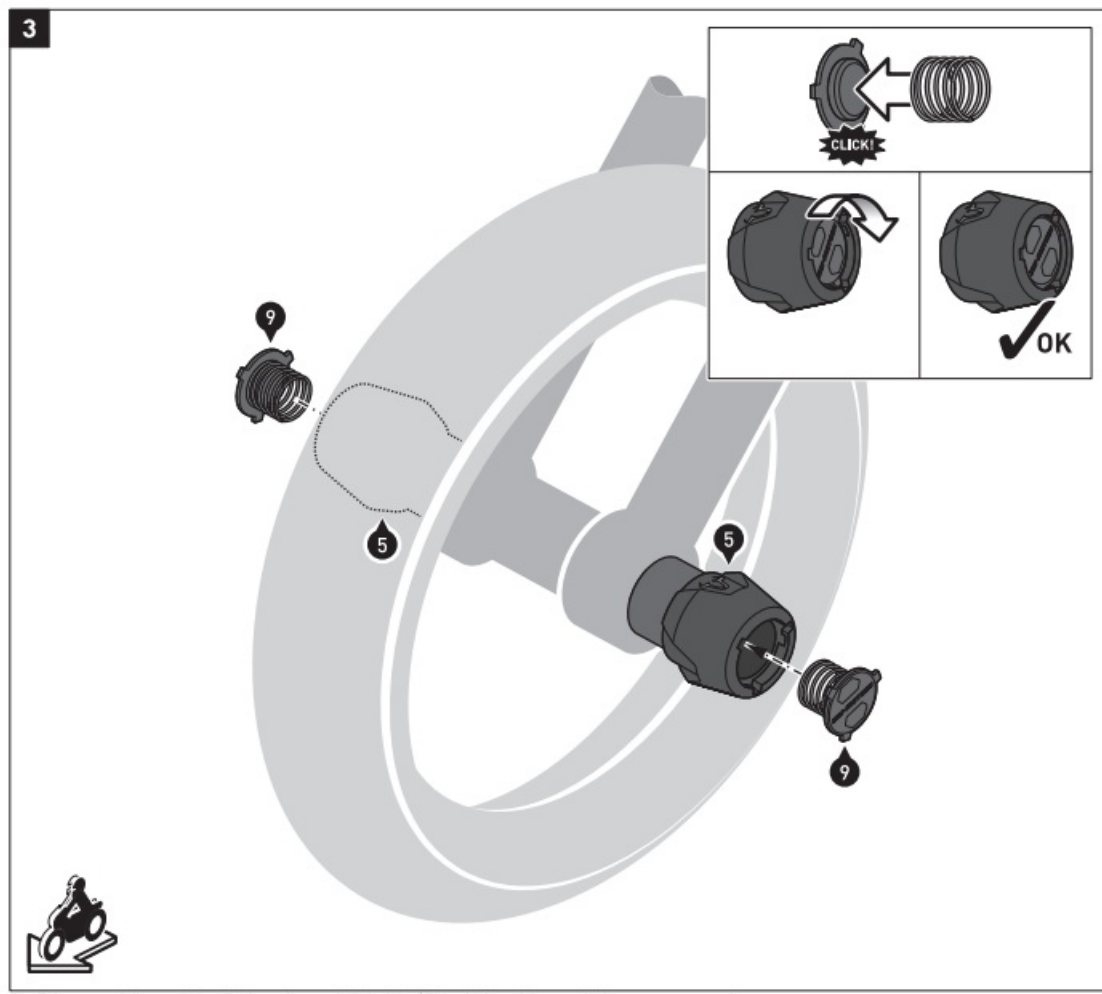
MOUNTING

- WARNING: Always wear eye and hand protection!
- WARNING: Always use appropriate tools!
- Guide the threaded rod 111 through the front axle mount of your vehicle.
- Then plug the spacers (2] and (31 onto the threaded rod (11. as shown in the drawing.
- WARNING: Pay attention to the centered alignment of the threaded rod (1)!
- Then mount the shown components with the nuts (41 to the vehicle.
- WARNING: Use liquid thread locker!
- Tighten the nuts 141 as specified.
- Mount the sliders (51 with the nuts (8] on both sides to the threaded rod (1]. Tighten the nuts IB] as specified.



Insert the cover caps (9) on both sides into the openings of the mounted sliders (5) and turn them to their end position.

- **WARNING:** Make sure that the cover caps (9) fit firmly.



PRODUCT SPECIFIC INFORMATION

& NOTICE: Observe the country-specific regulations concerning vehicle registration/operation as well as TOV regulations if applicable. If required, register installed parts in the vehicle documents through an appropriate inspection authority.

Documents / Resources

	<p>SW-MOTECH STP.07.176.11001 Slider Set for Front Axle [pdf] Instruction Manual STP.07.176.11001, Slider Set for Front Axle, STP.07.176.11001 Slider Set for Front Axle</p>
---	--