

SW-MOTECH GPT0679960000B Adv Top Case System



SW-MOTECH GPT0679960000B Adv Top Case System Instruction Manual

[Home](#) » [SW-MOTECH](#) » SW-MOTECH GPT0679960000B Adv Top Case System Instruction Manual 

Contents

- 1 SW-MOTECH GPT0679960000B Adv Top Case System
- 2 Product Information
- 3 Product Usage Instructions
- 4 Frequently Asked Questions
- 5 ADVENTURE-RACK
- 6 Adapter kit for ADVENTURE-RACK – Adapter plate for STREET-RACK
- 7 URBAN ABS top case
- 8 Contact
- 9 Documents / Resources
 - 9.1 References



SW-MOTECH GPT0679960000B Adv Top Case System



Product Information

Specifications:

- Model Numbers: GPT.06.799.60000/B, GPT.06.799.19000/B, GPT.00.152.35000/B, BC.HTA.00.677.20000/B
- Color: Black
- Material: High-quality plastic
- Dimensions: Vary based on model

Product Usage Instructions

1. Assembly:

Follow the assembly instructions provided in the manual. Ensure all parts are securely connected.

2. Installation:

Place the product in the desired location ensuring stability and\ safety. Use appropriate tools for installation if required.

3. Operation:

Refer to the user manual for specific operation instructions based on the model number. Use the product as intended.

4. Maintenance:

Regularly clean the product with a damp cloth. Avoid using harsh chemicals that may damage the material.

Frequently Asked Questions

- **Q: Can I disassemble the product for storage?**

- A: Yes, you can disassemble the product following the reverse steps of the assembly instructions.
- **Q: What should I do if I encounter an issue with the product?**
 - A: Contact our customer support for assistance, providing details of the issue and your product's model number for reference.
- **Q: Is the product suitable for outdoor use?**
 - A: Some models are designed for outdoor use, refer to the product specifications to determine suitability.

ADVENTURE-RACK

Thank you for choosing this premium product from SW-MOTECH. Please visit our webshop for additional information, such as application charts and PDF mounting instructions. Any other documents that may be required (e.g. ABE certifications), are also available for download at our webshop. Installation and/or maintenance of this product require good technical understanding! For your own safety SW-MOTECH recommends having installation and/or servicing carried out by a specialist workshop! SW-MOTECH assumes no liability for damage caused by improper installation and/or maintenance work! Carefully follow all the directions given in the mounting instructions and pay attention to all relevant information in the vehicle manual during assembly. Nonconformance can lead to vehicle damage or even endanger the driver! These mounting instructions are written based on our current state of knowledge. Legal requirements for accuracy do not exist. This product was developed for vehicles in their factory setting. Compatibility with original accessory parts or other manufacturers' accessory parts is not guaranteed. Furthermore, BEFORE installing this product, make sure that all moving parts (e.g. the chain) are in the original state of maintenance. Installed accessories can change the driving behaviour and/or stability of your vehicle.

GENERAL INFORMATION

Observe the country-specific regulations concerning vehicle registration/ operation as well as TUV regulations if applicable. If required, register installed parts in the vehicle documents through an appropriate inspection authority.

- **PREPARATION:** Read the mounting instructions carefully and make sure that all items of the parts list are included. Make sure that your vehicle is parked safely and cannot fall over. Turn off the engine and remove the ignition key. Let the motor/exhaust cool off if necessary. Disconnect the vehicle battery when working on the electrical system. Use appropriate tools. Have another person to help you.
- **MOUNTING:** All parts and connections removed from the vehicle must be reinstalled in accordance with the vehicle manufacturers' specifications or replaced by parts delivered by SW-MOTECH. Secure all threads, unless otherwise specified, with medium-strength liquid thread locker.
Torque specifications undefined by SW-MOTECH must be obtained from the vehicle manufacturer or by a specialist workshop!
- **FUNCTION CHECK:** After installation make sure that all parts and connections previously removed are properly replaced. Also make sure that no moving parts are obstructed and no function of the vehicle is hindered in any way. Cables and hoses must not rub and/or be pinched. Before starting to ride, perform a comprehensive check of all functions. After the first 50 km and then at regular intervals, check the tightening torque of all screw connections and the proper fit of the product.

PRODUCT SPECIFIC INFORMATION

Maximum Load		Maximum Speed	
	7.5 (16.5 lbs)		130 km/h (80 mph)

ATTENTION: The indicated maximum load is inclusive the weight of topcase/luggage and adapter kit! The maximum vehicle load specified by the manufacturer must not be exceeded!

PARTS LIST

Part	Anzahl ** Quantity **	N·m ***
Mounting Strut; left / right	2 / 2	
Plastic Plug	4 / 4	
Hexagon Socket Screw; short head; black	4 / 4	
Washer; black	4 / 4	
Spacer; black	4 / 4	
Spacer; black	4 / 4	
Luggage Rack	1 / 1	
Lenshead Screw; black	4 / 4	8
Washer; black	4 / 4	
Lock Nut with Flange; black	4 / 4	



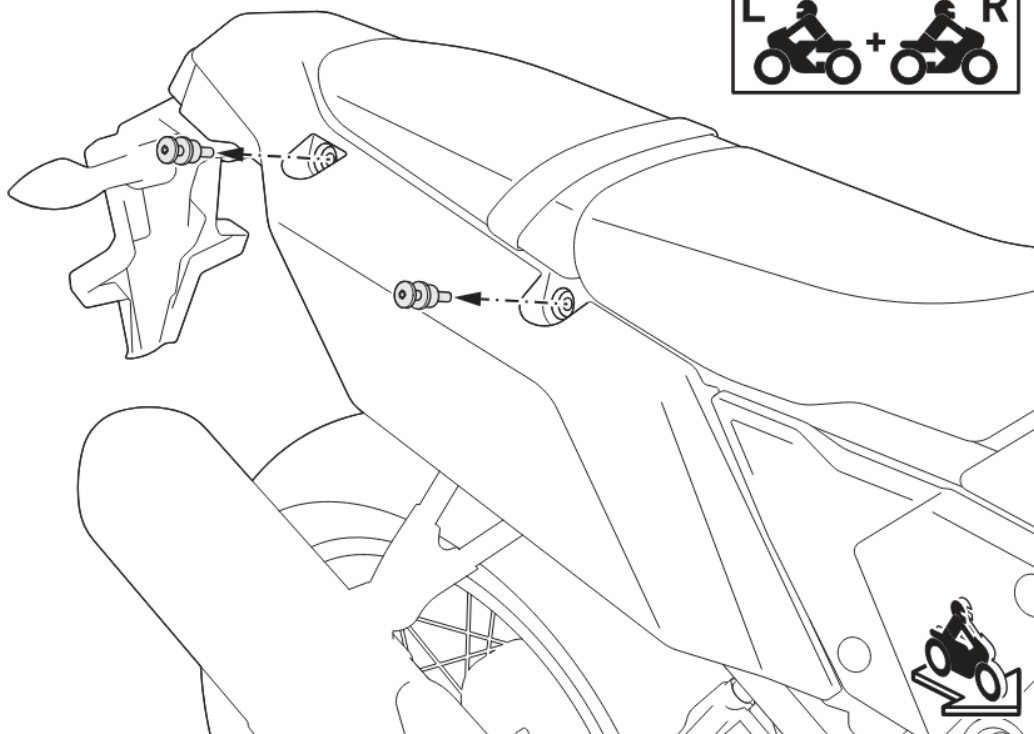
10.9	Regelgewinde / Coarse Thread Ø	M4	M5	M6	M8	M10	M12
	Stahl FK 10.9 / Steel CL 10.9 N·m	4,1	8,1	14	34	67	115

- All measurements in millimeters. • ** The second number indicates the total quantity of the part in the delivery.
- No torque specifications: Use the torque defined by vehicle manufacturer! The standard torque in this table can be used as long as it is within the vehicle manufacturer's specifications.

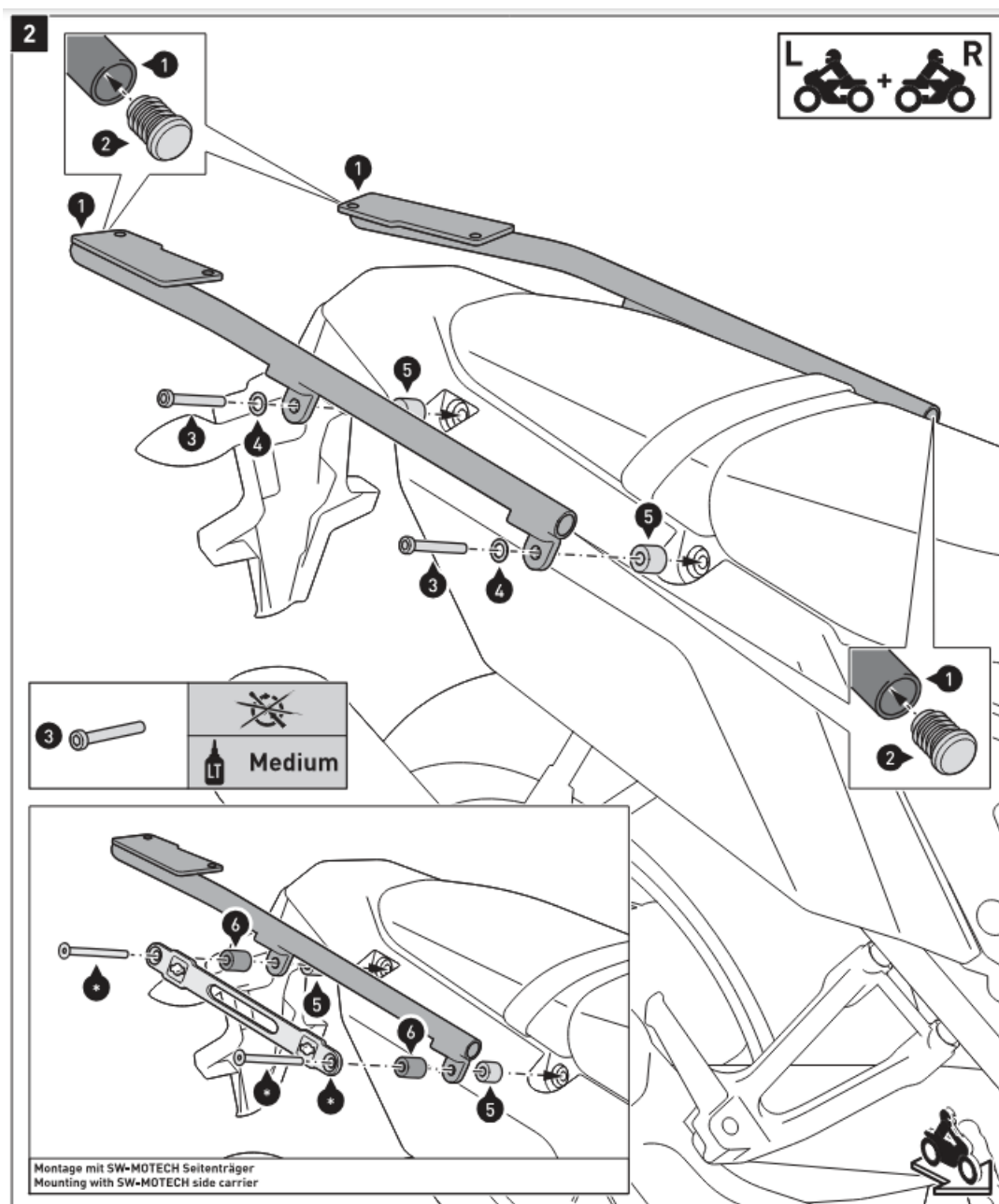
MOUNTING

NOTE: The mounting is shown on the right side of the vehicle only. Repeat the same procedure on the left side of the vehicle with the appropriate parts. Remove the luggage hooks on both sides of the vehicle.

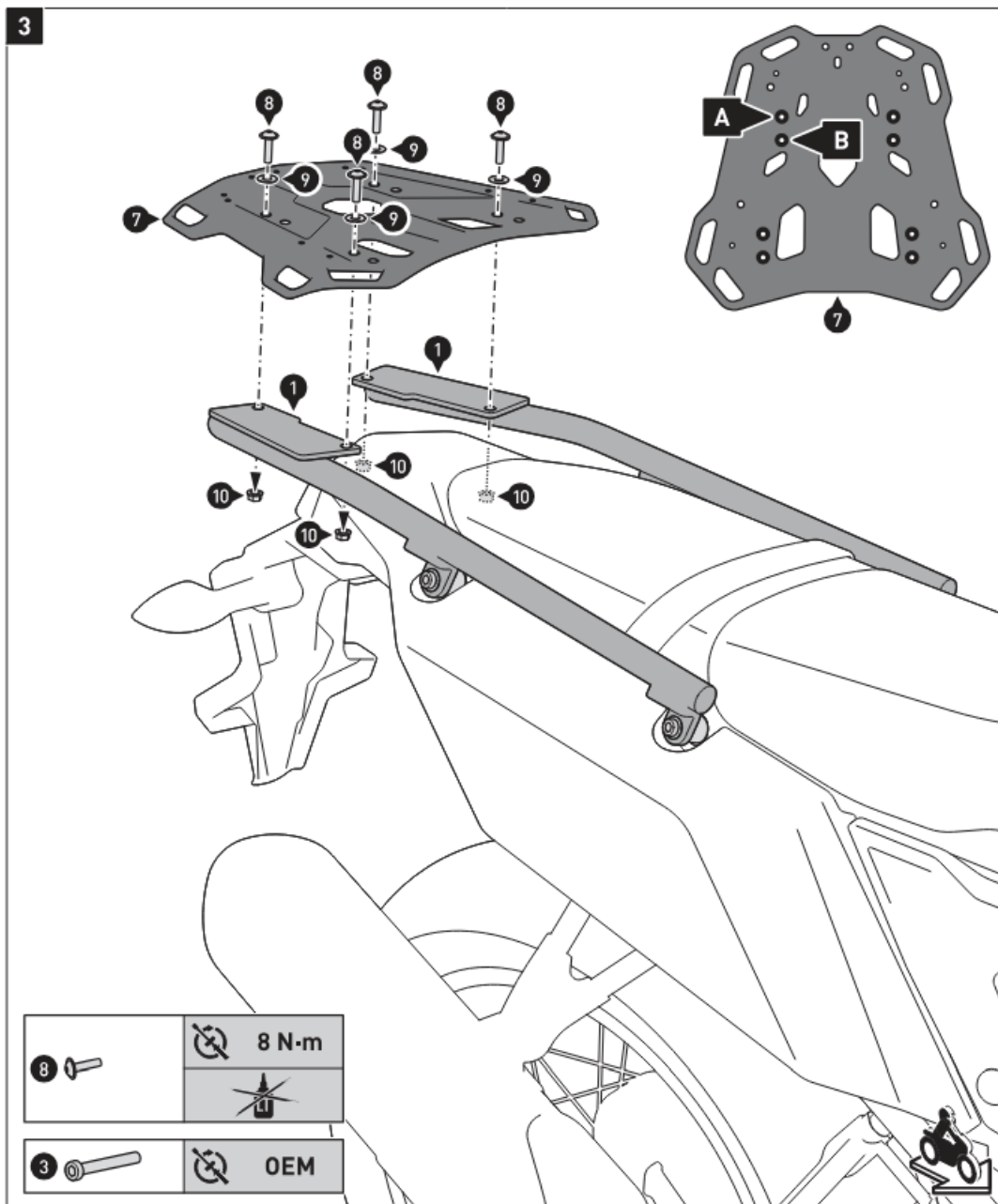
1



NOTE: When mounting the luggage rack with the SW-MOTECH side carrier, the screws (3) are not required. Mount instead the marked /•J parts of the side carrier and the spacers (6), as shown in the drawing. Insert the plastic plugs (2) into the mounting struts (1). Attach the mounting struts (1) to the vehicle, as shown in the drawing. **ATTENTION:** Use liquid thread locker! Do not fully tighten the screws yet.



NOTE: Choose the marked front mounting position (AI) or the rear mounting position (BJ) of the luggage rack according to your preferences, as shown in the detail drawing. Attach the luggage rack (7) to the mounting struts (1) as shown in the drawing. Once all parts are evenly positioned without excess tension, tighten the screws (8) as specified. Tighten the screws (3) (see step [211] with the manufacturers' specified torque



Adapter kit for ADVENTURE-RACK – Adapter plate for STREET-RACK

Thank you for choosing this premium product from SW-MOTECH. Please visit our webshop for additional information, such as application charts and PDF mounting instructions. Any other documents that may be required (e.g. ABE certifications), are also available for download at our webshop. Installation and/or maintenance of this product require good technical understanding! For your own safety SW-MOTECH recommends having installation and/or servicing carried out by a specialist workshop! SW-MOTECH assumes no liability for damage caused by improper installation and/or maintenance work! Carefully follow all the directions given in the mounting instructions and pay attention to all relevant information in the vehicle manual during assembly. Nonconformance can lead to vehicle damage or even endanger the driver! These mounting instructions are written based on our current state of knowledge. Legal requirements for accuracy do not exist. This product was developed for vehicles in their factory setting. Compatibility with original accessory parts or other manufacturers' accessory parts is not guaranteed. Furthermore, BEFORE installing this product, make sure that all moving parts (e.g. the chain) are in the original state of maintenance. Installed accessories can change the driving behaviour and/or stability of your vehicle.

GENERAL INFORMATION

Observe the country-specific regulations concerning vehicle registration/ operation as well as TUV regulations if applicable. If required, register installed parts in the vehicle documents through an appropriate inspection

authority.

- **PREPARATION:** Read the mounting instructions carefully and make sure that all items of the parts list are included. Make sure that your vehicle is parked safely and cannot fall over. Turn off the engine and remove the ignition key. Let the motor/exhaust cool off if necessary. Disconnect the vehicle battery when working on the electrical system. Use appropriate tools. Have another person to help you.
- **MOUNTING:** All parts and connections removed from the vehicle must be reinstalled in accordance with the vehicle manufacturers' specifications or replaced by parts delivered by SW-MOTEC. Secure all threads, unless otherwise specified, with medium-strength liquid thread locker.
Torque specifications undefined by SW-MOTEC must be obtained from the vehicle manufacturer or by a specialist workshop!
- **FUNCTION CHECK:** After installation make sure that all parts and connections previously removed are properly replaced. Also make sure that no moving parts are obstructed and no function of the vehicle is hindered in any way. Cables and hoses must not rub and/or be pinched. Before starting to ride, perform a comprehensive check of all functions. After the first 50 km and then at regular intervals, check the tightening torque of all screw connections and the proper fit of the product.

PARTS LIST

Part	Anzahl ** Quantity **	N·m ***
Mounting Bracket	1 / 1	
Countersunk Screw; black	2 / 2	7
Countersunk Screw; black	2 / 2	7
Lock Nut with Flange; black	2 / 2	

10.9	Regelgewinde / Coarse Thread Ø	M4	M5	M6	M8	M10	M12
	Stahl FK 10.9 / Steel CL 10.9 N·m	4,1	8,1	14	34	67	115

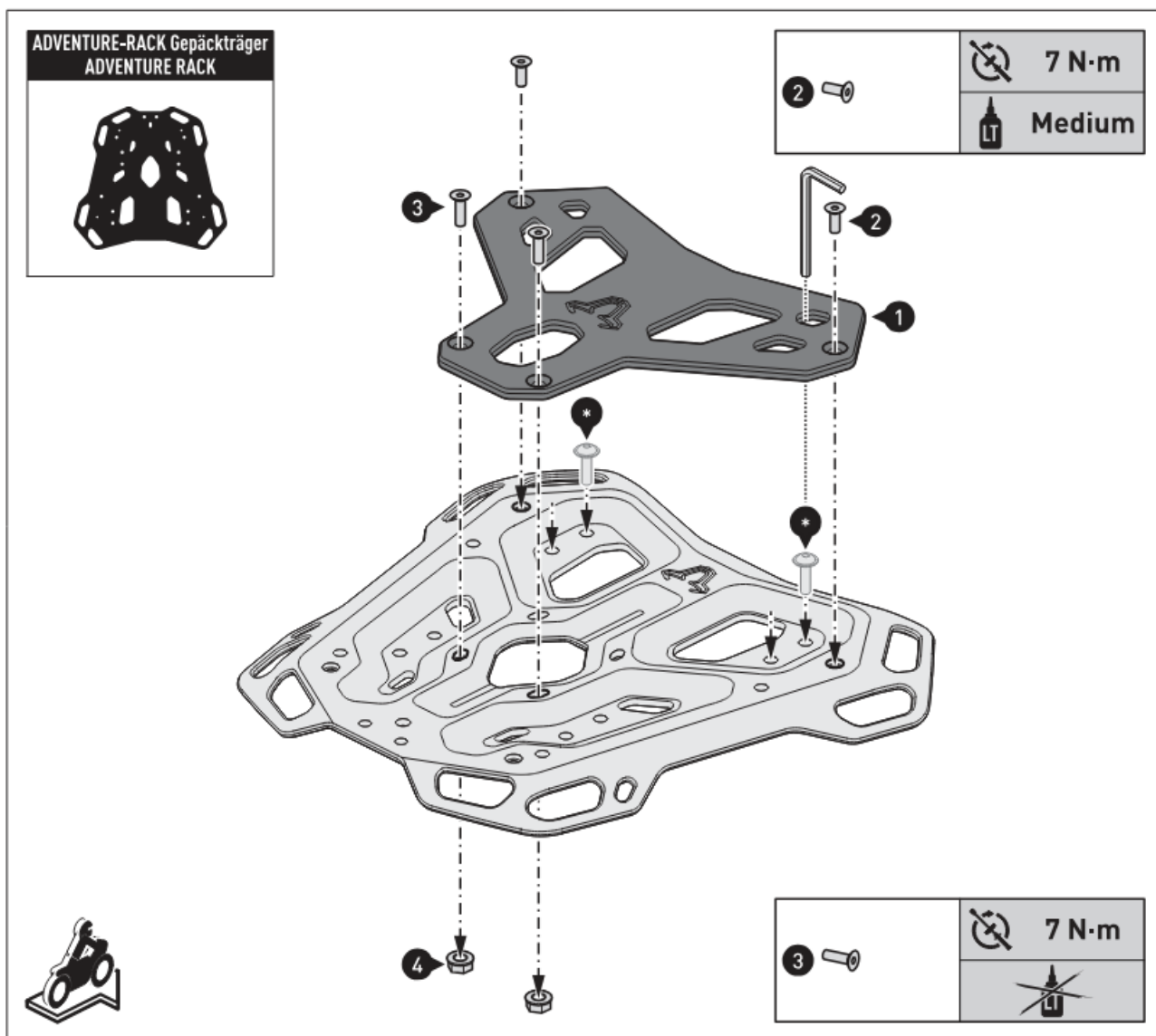
- All measurements in millimeters. • ** The second number indicates the total quantity of the part in the delivery.
- No torque specifications: Use the torque defined by vehicle manufacturer! The standard torque in this table can be used as long as it is within the vehicle manufacturer's specifications.



MOUNTING

ADVENTURE RACK

NOTE: BEFORE attaching the mounting bracket (1], insert the screws [*] supplied with the ADVENTURE-RACK into the rear openings. The screws [*] can be tightened after attaching the mounting plate through the cutouts. Attach the mounting bracket [1 I to your ADVENTURE RACK [sold separately). as shown in the drawing. ATTENTION: Use liquid thread locker (screws (2) only)! Tighten the screws as specified in the parts list.



URBAN ABS top case

Thank you for choosing this premium product from SW-MOTECH. Please visit our webshop for additional information, such as application charts and PDF mounting instructions. Any other documents that may be required (e.g. ABE certifications), are also available for download at our webshop. Installation and/or maintenance of this product require good technical understanding! For your own safety SW-MOTECH recommends having installation and/or servicing carried out by a specialist workshop! SW-MOTECH assumes no liability for damage caused by improper installation and/or maintenance work! Carefully follow all the directions given in the mounting instructions and pay attention to all relevant information in the vehicle manual during assembly. Nonconformance can lead to vehicle damage or even endanger the driver! These mounting instructions are written based on our current state of knowledge. Legal requirements for accuracy do not exist. This product was developed for vehicles in their factory setting. Compatibility with original accessory parts or other manufacturers' accessory parts is not guaranteed. Furthermore, BEFORE installing this product, make sure that all moving parts (e.g. the chain) are in the original state of maintenance. Installed accessories can change the driving behaviour and/or stability of your vehicle.

GENERAL INFORMATION

Observe the country-specific regulations concerning vehicle registration / operation as well as TUV regulations if applicable. If required, register installed parts in the vehicle documents through an appropriate inspection authority.

- **PREPARATION:** Read the mounting instructions carefully and make sure that all items of the parts list are

included. Make sure that your vehicle is parked safely and cannot fall over. Turn off the engine and remove the ignition key. Let the motor / exhaust cool off if necessary. Disconnect the vehicle battery when working on the electrical system. Use appropriate tools. Have another person to help you.

- **FUNCTION CHECK:** This is a universal product. For this reason make sure **BEFORE** the first use, that the product can be fixed properly and used without problems with your vehicle type. After fixation also make sure that no moving parts are obstructed and the function of the vehicle is not hindered in any way. Lamps as taillight and turn signals must not be limited in their function. Cables and hoses must not rub and/or be pinched. Before starting to ride, perform a comprehensive check of all functions.

PRODUCT SPECIFIC INFORMATION

- **ATTENTION:** Riding with this product may affect the motorcycles driving and braking performance!
- **ATTENTION:** Before riding and at each stop (every 200 km) check proper fixation of the product!

Maximum Load	Maximum Speed
 7,5 KG (16,5 lbs)	 130 km/h (80 mph)

ATTENTION: The maximum load of the used SW-MOTECH luggage rack must not be exceeded (refer mounting instructions of the SW-MOTECH luggage rack); make sure to take into account the dead weight of the top case (3 kg)! The maximum vehicle load specified by the manufacturer must not be exceeded!

Attention

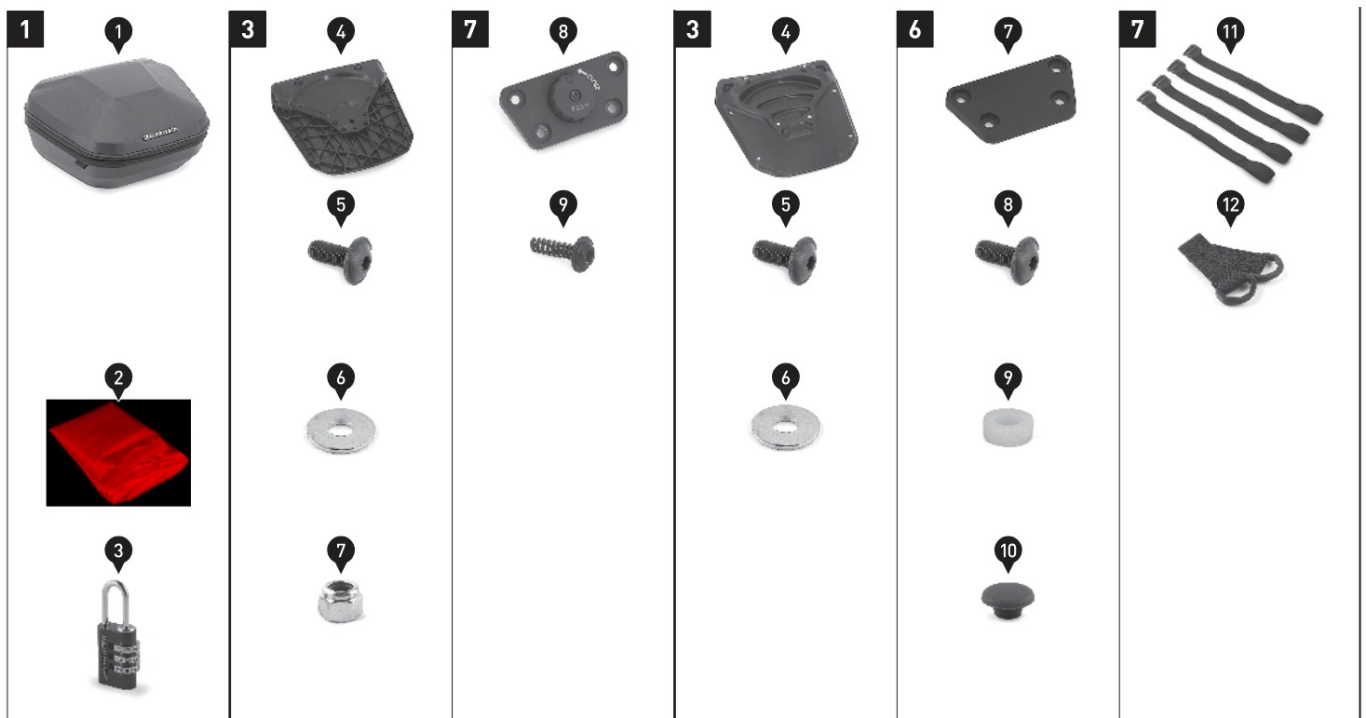
Not for Offroad use

Parts List

Part	Anzahl ** Quantity **	N·m ***
<i>Both variants</i>		
URBAN ABS top case	1 /1	
Waterproof inner bag	1 /1	
Lock for motorcycle luggage	1 /1	
URBAN ABS top case for STREET-RACK		
Locking System	1 /1	
Lenshead Screws; black	6 /6	2,5
Washer; stainless steel	6 /6	
Lock Nut; stainless steel	6 /6	
Anti-Theft Device	1 /1	
Lenshead Screw, self-tapping	4 /4	2,5
URBAN ABS top case as lashing variation		
Foam Rubber Base	1 /1	
Lenshead Screws; black	6 /8	2,5
Washer; stainless steel	6 /6	
Cover Plate	1 /1	
Lenshead Screws; black	2 /8	2,5
Spacer; plastic	2 /2	
Plastic Cap; black	2 /2	
Loop Strap Set (4 pieces)	1 /1	
Lashing Eye Set (2 pieces)	1 /1	

10.9	Regelgewinde / Coarse Thread Ø	M4	M5	M6	M8	M10	M12
	Stahl FK 10.9 / Steel CL 10.9 N·m	4,1	8,1	14	34	67	115

- All measurements in millimeters. • ** The second number indicates the total quantity of the part in the delivery.
- No torque specifications: Use the torque defined by vehicle manufacturer! The standard torque in this table can be used as long as it is within the vehicle manufacturer's specifications.

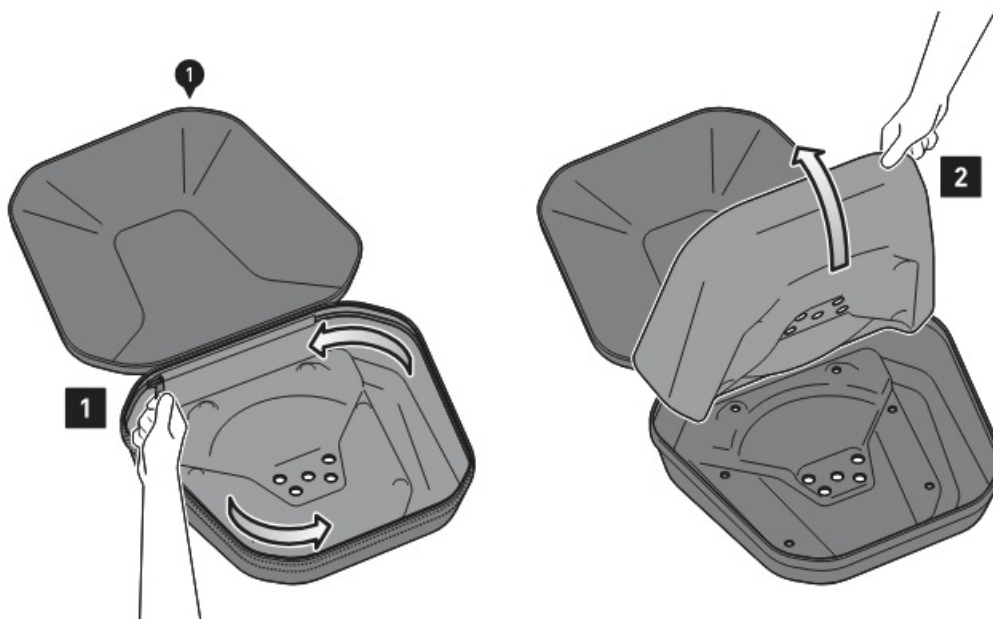


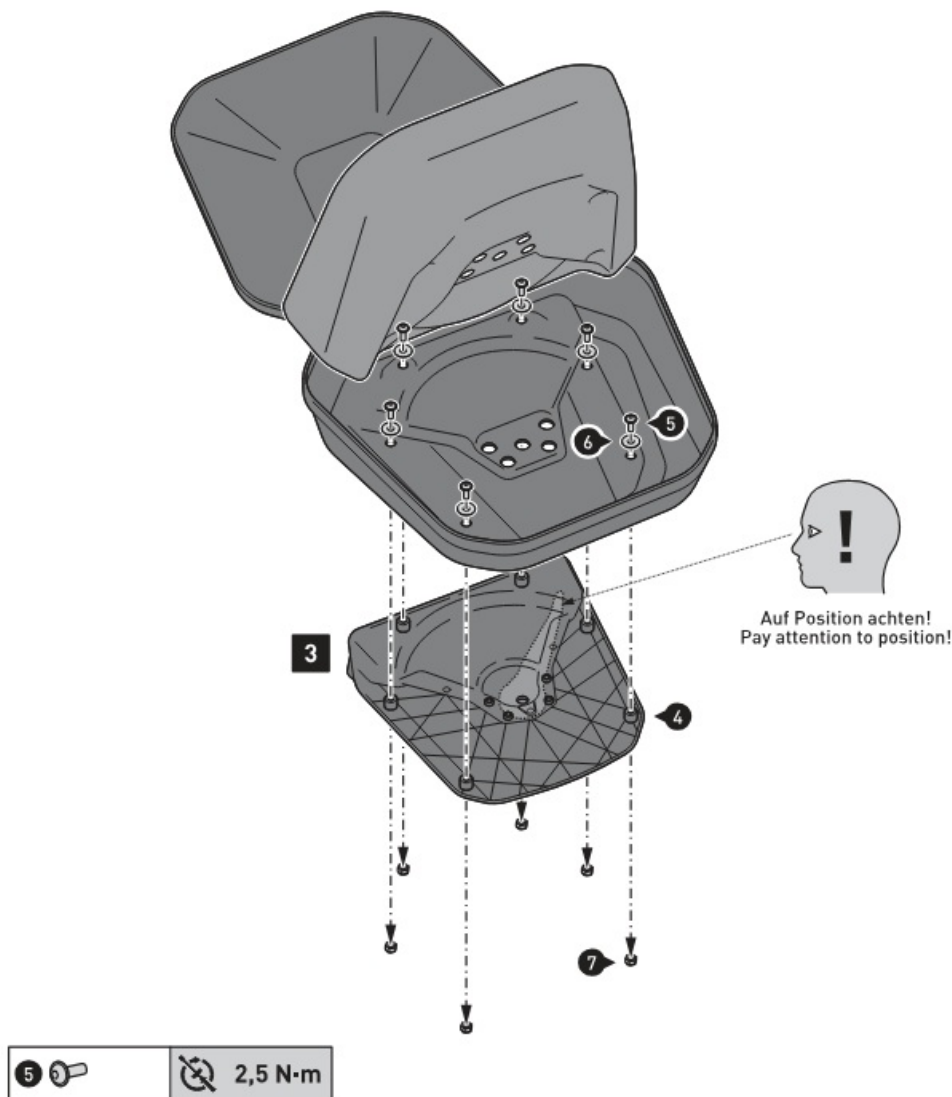
MOUNTING

URBAN ABS top case for

STREET-RACK

- Step [1]: Open the lid and inner zipper of the top case (1).
- Step [2]: Flip up the inner lining.
- Step [3]: Attach the locking system (41 under the top case (1). Pay attention to the position of the locking lever (closed). Tighten the screws as specified in the parts list.

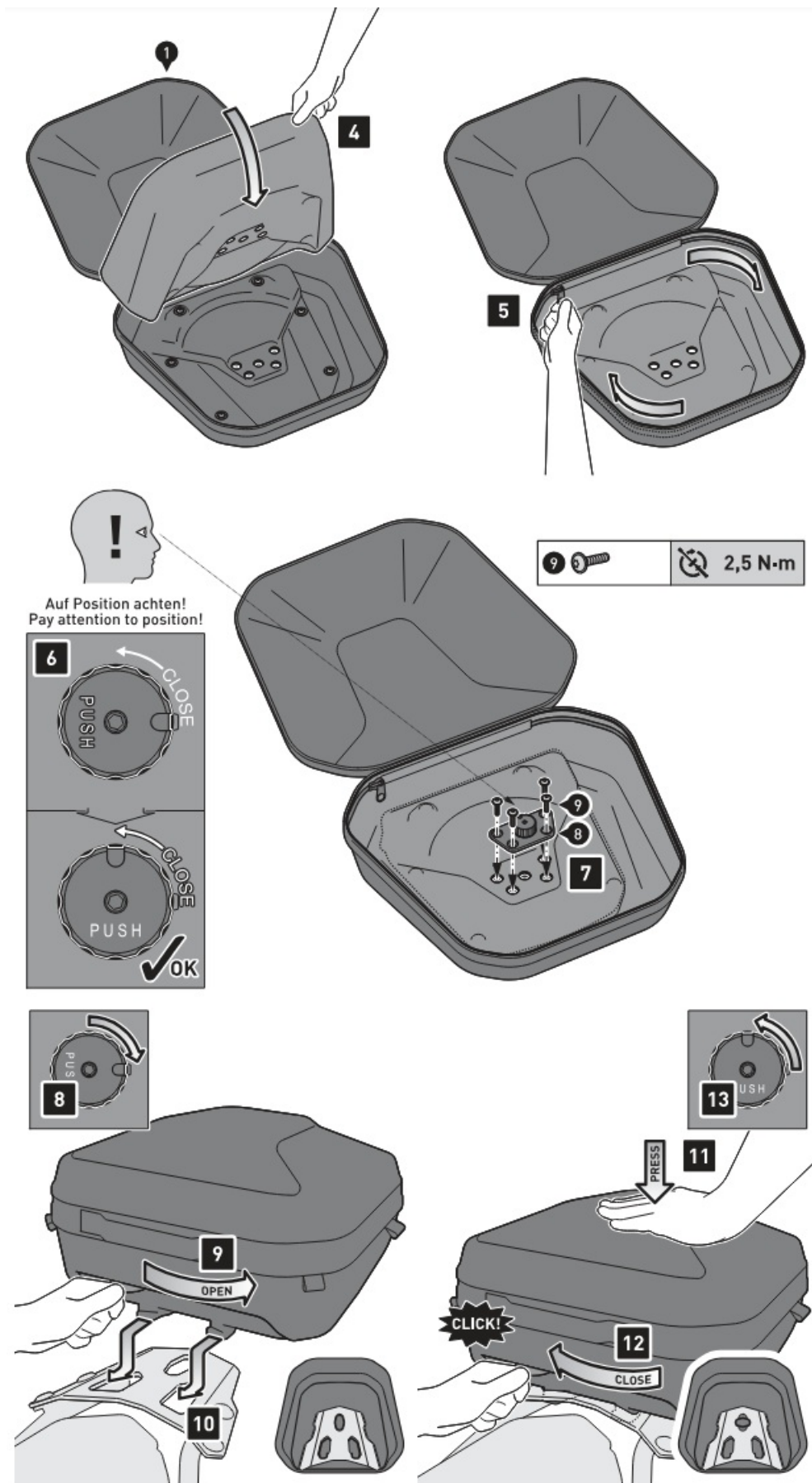




- Step [4]: Flip down the inner lining.
- Step [5]: Close the inner zipper of the top case (1).
- Step [6]: Turn the locking button of the anti-theft device (8) to the closed position.
- Step [7]: Attach the anti-theft device (8) inside the top case (1). Tighten the screws as specified in the parts list.

MOUNTING TO THE STREET-RACK

- Step [8]: Turn the locking button into the open position.
- Step [9]: Push the locking lever into the open position.
- Step [1 D]: Slide the locking system (4) with the two hooks into the openings of your STREET-RACK [sold separately].
- Step [11]: Press the top case (1) slightly down ...
- Step [12]: ... and close the locking lever. Pay attention to the audible snap sound.
- Step [13]: Secure the top case via locking button of the anti-theft device (8) against theft and check the proper fit on the vehicle.
- TIP: We recommend leaving the locking button of the anti-theft device (8) in the closed position during the ride.

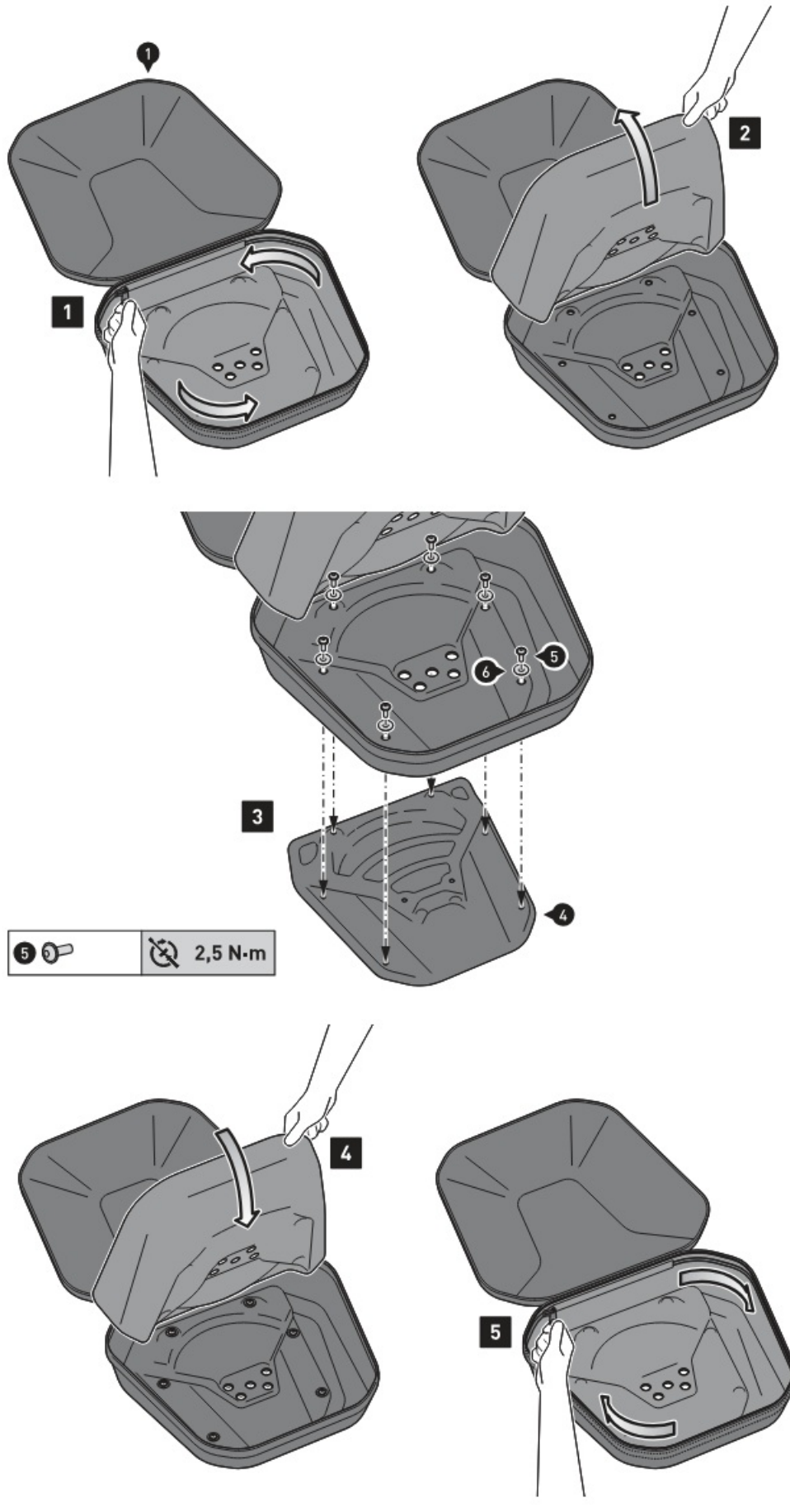


URBAN ABS top case as lashing variation

- Step [1]: Open the lid and inner zipper of the top case 111.
- Step [2]: Flip up the inner lining.
- Step [3]: Attach the foam rubber base 14) under the top case 11). Tighten the screws as specified in the parts

list.

- Step [4]: Flip down the inner lining.
- Step [5]: Close the inner zipper of the top case I 1 J.



(UNBEDINGT BEACHTEN)

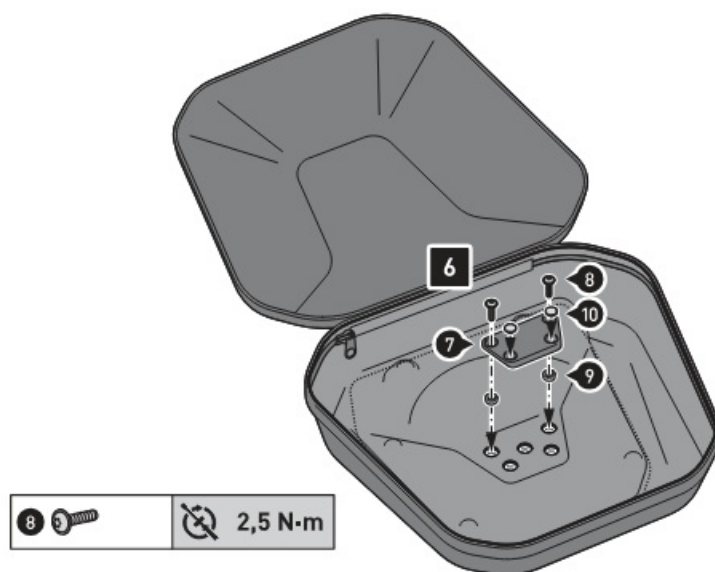
- Step [6]: Attach the cover plate (7) inside the top case (11).
Tighten the screws as specified in the parts list.

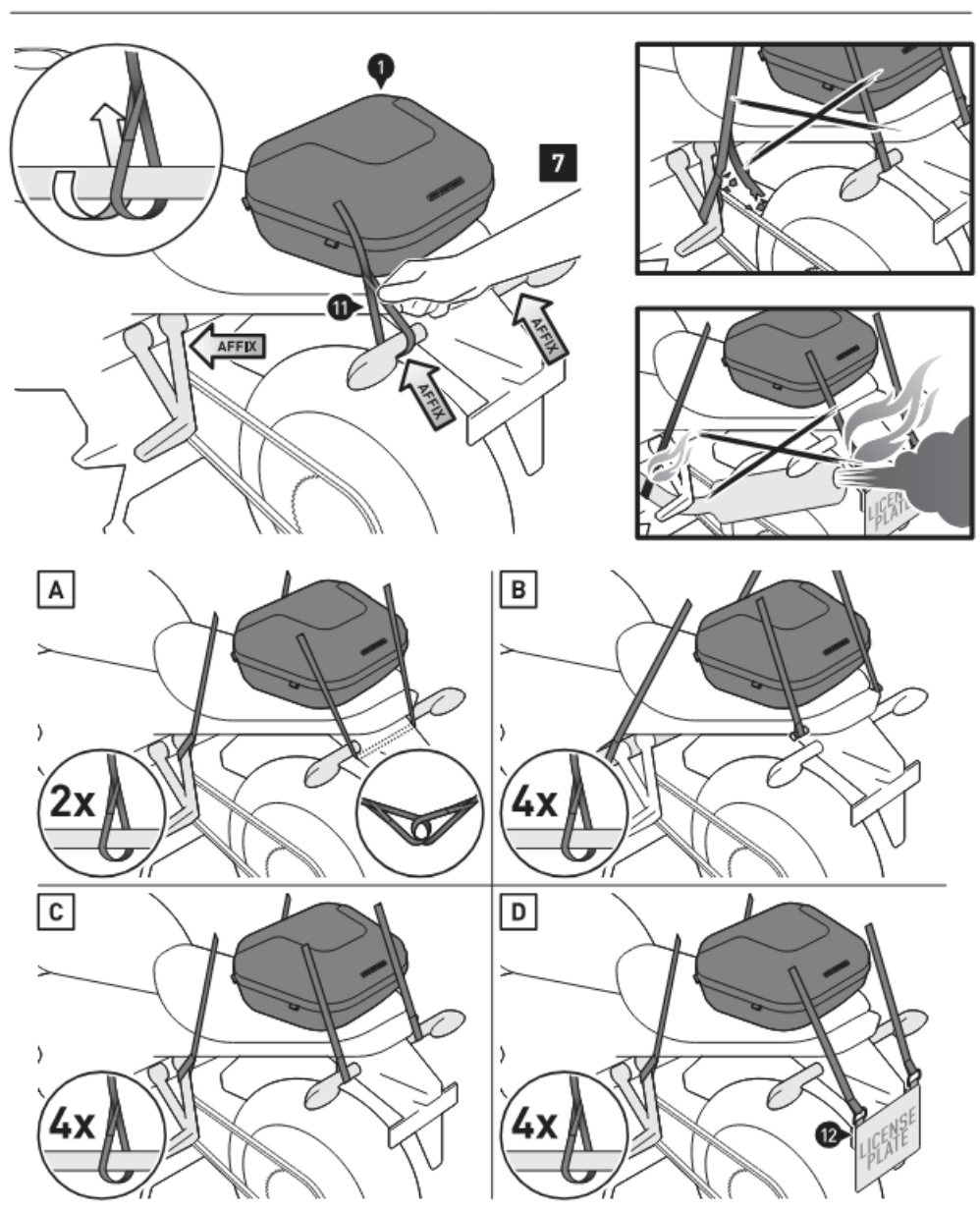
FIXATION TO THE VEHICLE

- Step [7]: On both sides entangle TWO loop straps (11 I to appropriate and reliable attachment points in the rear area of the vehicle (e.g. luggage hook etc.).
Then entangle on both sides TWO loop straps (11 I to appropriate and reliable attachment points of the vehicle (e.g. vehicles frame, footrest mounts etc.).

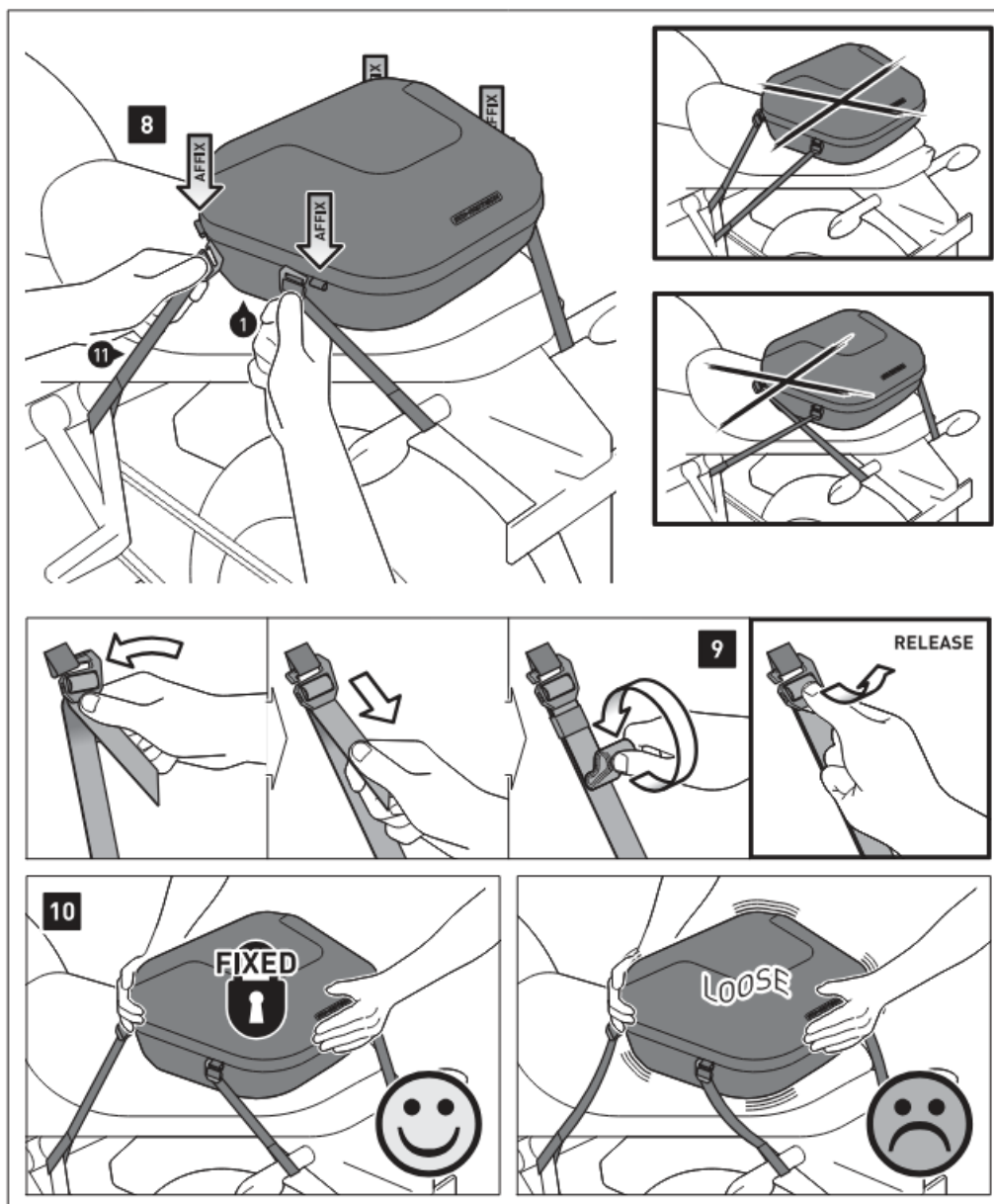
FUNCTION CHECK (MUST BE OBSERVED)

- ATTENTION: All loop straps must not contact any hot or moving parts of the vehicle. All loop straps should also remain 15 cm away from hot parts of the vehicle and remain clear of the exhaust stream. For this reason compress the suspension fully several times with your vehicle stationary.



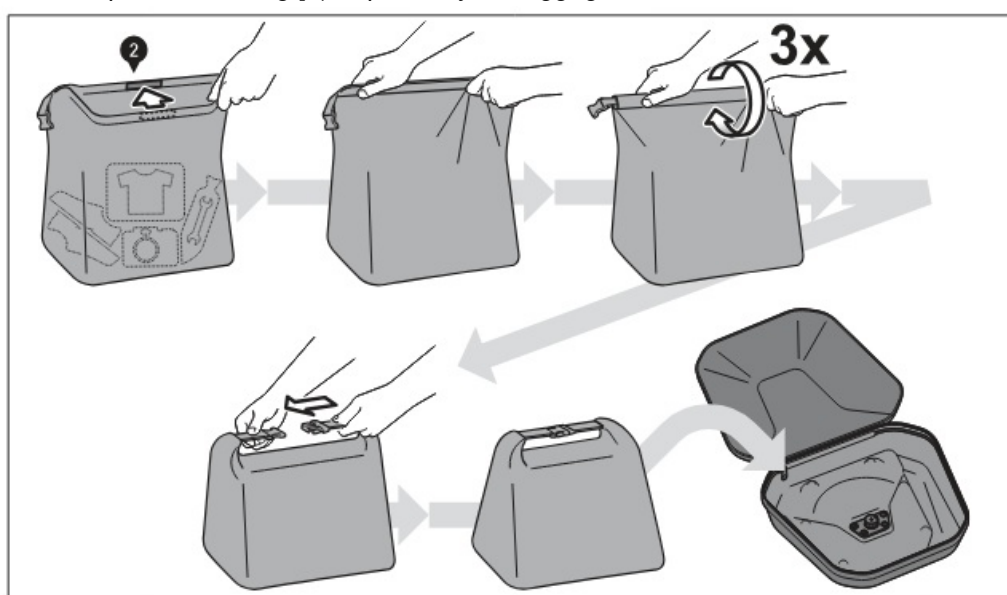


- Step [8]: Attach the hook buckles of the loop straps [11] on both sides to the marked loops of the top case [1] as shown in the drawing. Tighten all loop straps until the top case [1] is centered and securely fastened to the vehicle.
- Step [9]: Secure the overlength of the loop straps [6] with the rubber loops against flapping.
- Step [10]: Check the proper fit of the top case.



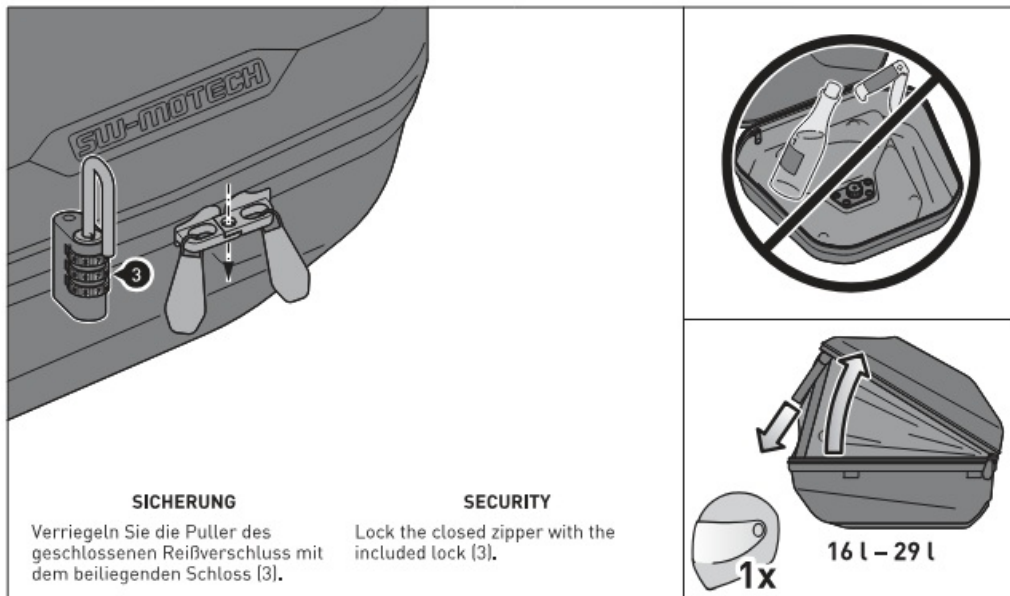
MOISTURE PROTECTION

Use the included waterproof inner bag [2] to protect your luggage from moisture.



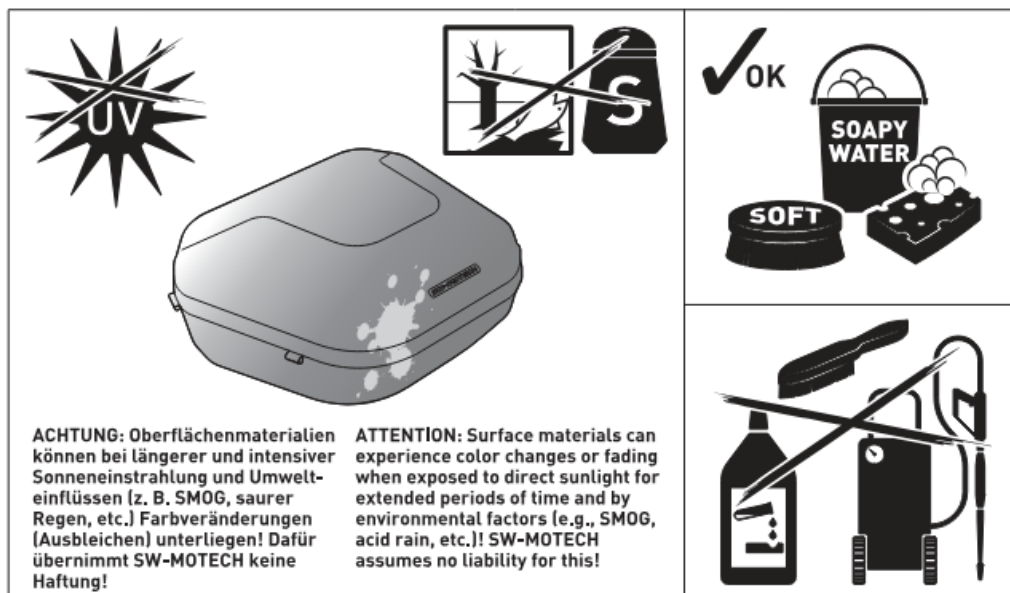
LOADING

ATTENTION: Never store pointy or sharp-edged objects, which could cause injury to persons or damage to the vehicle/top case. Volume expansion: Open the revolving zipper. For a tight fit the opening angle can be adjusted via the attached straps.



CARE

For cleaning use **ONLY** a soft textile brush, cloth or sponge and warm soapy water! Rinse with clean water. Do **NOT** use strong cleaning agents, rough cleaning tools or high pressure washer! Clean the top case after riding in salty conditions, to avoid damage from salt.



Contact

- SW-MOTECH GmbH & Co. KG
- Ernteweg 8/10
- 35282 Rauschenberg Germany
- Tel. | phone+ 49 (0)6425 / 8168 – 050
- Fax/ fax+ 49 (0)6425 / 8168 – 10
- info@sw-motech.com

- www.sw-motech.com

Documents / Resources

<div><div>ANBAUANLEITUNG</div><div><div>GPT.06.799.60000-B</div><div>GPT.06.799.19000-B</div><div>GPT.00.152.35000-B</div><div>BC.HTA.00.677.20000-B</div><div>GPT.06.799.60000-B</div></div><div><div>SW-MOTECH</div></div></div>	<div><div>SW-MOTECH GPT0679960000B Adv Top Case System</div><div>[pdf] Instruction Manual</div><div>GPT.06.799.60000-B, GPT.06.799.19000-B, GPT.00.152.35000-B, BC.HTA.00.677.20000-B, GPT0679960000B Adv Top Case System, Adv Top Case System, Top Case System, Case System, System</div></div>
--	--

References

- [User Manual](#)

[Manuals+](#), [Privacy Policy](#)

This website is an independent publication and is neither affiliated with nor endorsed by any of the trademark owners. The "Bluetooth®" word mark and logos are registered trademarks owned by Bluetooth SIG, Inc. The "Wi-Fi®" word mark and logos are registered trademarks owned by the Wi-Fi Alliance. Any use of these marks on this website does not imply any affiliation with or endorsement.