

SW-MOTECH GPT.08.868.30000 Rackpack Set Installation Guide

Contents

1 ANBAUANLEITUNG

1.1 GPT.08.868.30000

1.1.1 MOUNTING INSTRUCTIONS

1.1.1.1 GENERAL INFORMATION

1.1.1.2 PRODUCT SPECIFIC INFORMATION

1.1.2 PARTS LIST

1.1.3 MOUNTING

1.1.4 MOUNTING INSTRUCTIONS

1.1.5 PARTS LIST

1.1.6 MOUNTING

1.1.7 MOUNTING INSTRUCTIONS

1.1.8 PARTS LIST

1.1.9 FASTENING

1.1.10 LOADING AND CARE

2 Documents / Resources

2.1 References

3 Related Posts

ANBAUANLEITUNG

mounting instructions

GPT.08.868.30000

- contains

GPT.08.868.16000/B

GPT.00.152.54500/B

BC.HTA.00.305.30000



MOUNTING INSTRUCTIONS

Item No.: GPT.08.868.16000/B Revision: 00 · Date: 12 – 2019
STREET-RACK

Thank you for choosing this premium product from SW-MOTECH. Please visit our webshop for additional

information, such as application charts and PDF mounting instructions. Any other documents that may be required (e.g. ABE certifications), are also available for download at our webshop.

Installation and/or maintenance of this product require good technical understanding! For your own safety SW-MOTECH recommends having installation and/or servicing carried out by a specialist workshop! SW-MOTECH assumes no liability for damage caused by improper installation and/or maintenance work!

Carefully follow all the directions given in the mounting instructions and pay attention to all relevant information in the vehicle manual during assembly. Nonconformance can lead to vehicle damage or even endanger the driver! These mounting instructions are written based on our current state of knowledge. Legal requirements for accuracy do not exist.

This product was developed for vehicles in their factory setting. Compatibility with original accessory parts or other manufacturers' accessory parts is not guaranteed. Furthermore, BEFORE installing this product, make sure that all moving parts (e.g. the chain) are in the original state of maintenance. Installed accessories can change the driving behaviour and/or stability of your vehicle.

GENERAL INFORMATION

Observe the country-specific regulations concerning vehicle registration/ operation as well as TUV regulations if applicable. If required, register installed parts in the vehicle documents through an appropriate inspection authority.



PREPARATION: Read the mounting instructions carefully and make sure that all items of the parts list are included. Make sure that your vehicle is parked safely and cannot fall over. Turn off the engine and remove the ignition key. Let the motor/exhaust cool off if necessary. Disconnect the vehicle battery when working on the electrical system. Use appropriate tools. Have another person to help you.

MOUNTING: All parts and connections removed from the vehicle must be reinstalled in accordance with the vehicle manufacturers' specifications or replaced by parts delivered by SW-MOTECH. Secure all threads, unless otherwise specified, with medium-strength liquid thread locker.

Torque specifications undefined by SW-MOTECH must be obtained from the vehicle manufacturer or by a specialist workshop!


FUNCTION CHECK: After installation make sure that all parts and connections previously removed are properly replaced. Also make sure that no moving parts are obstructed and no function of the vehicle is hindered in any way. Cables and hoses must not rub and/or be pinched. Before starting to ride, perform a comprehensive check of all functions. After the first 50 km and then at regular intervals, check the tightening torque of all screw connections and the proper fit of the product.

PRODUCT SPECIFIC INFORMATION

Maximum Load	Maximum Speed
 5 KG (11 lbs)	 130 km/h (80 mph)

ATTENTION: The indicated maximum load is inclusive the weight of topcase/luggage and adapter plate! The maximum vehicle load specified by the manufacturer must not be exceeded!

ATTENTION: The luggage carrier can not be mounted in combination with the SLC side carrier set!

Packed by:	Date of packaging:	 SW-MOTECH GmbH & Co. KG Ernteweg 7-10 35282 Rauschenberg Germany Tel. / phone + 49 (0)6425 / 8168 – 050 Fax / fax + 49 (0)6425 / 8168 – 10 info@sw-motech.com www.sw-motech.com
------------	--------------------	---

PARTS LIST

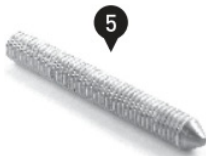
Step	No.	Item No. / Description*	Part	Quantity**	N·m***
2	(1)	HTA.08.868.001	Mounting Bracket	2 / 2	
	(2)	HTA.08.868.002	Counter Bracket	2 / 2	
	(3)	M6 x 20; DIN 912	Hexagon Socket Screw	4 / 4	10
	(4)	Ø 6,4; DIN 125	Washer	4 / 4	
	(5)	GEW.ST.08.060.01.914.088	Threaded Center Punch	1 / 1	
5	(6)	GPT.08.868.901.01 / 902.01	Mounting Strut; left / right	2 / 2	
	(7)	M8 x 50; DIN 6912	Hexagon Socket Screw, short head	4 / 4	23
	(8)	Ø 8,4; DIN 125	Washer	4 / 6	
	(9)	Ø 18 / Ø 8,4 / h 12	Spacer	4 / 4	
	(10)	M8 x 80; DIN 912	Hexagon Socket Screw	2 / 2	23
	(11)	Ø 8,4; DIN 125	Washer	2 / 6	
	(12)	Ø 18 / Ø 10,5 / h 50	Spacer; black	2 / 2	
	(13)	KES.RD.210.0300.02.GL	Plastic Plug	4 / 4	
	(14)	Ø 18 / Ø 8,4 / h 7	Spacer	4 / 4	
	(15)	Ø 15 / Ø 8,2 / h 6	Spacer	2 / 2	
6	(16)	GPT.00.277.050	Luggage Carrier	1 / 1	
	(17)	M8 x 25; DIN 7991	Countersunk Screw; black	4 / 4	20
	(18)	Ø 8,4	Countersunk Washer; black	4 / 4	

8.8	Coarse Thread	Ø	M4	M5	M6	M8	M10	M12
	Steel CL 8.8	N·m	2,8	5,5	9,6	23	46	79

10.9	Coarse Thread	Ø	M4	M5	M6	M8	M10	M12
	Steel CL 10.9	N·m	4,1	8,1	14	34	67	115

* All measurements in millimeters. · ** The second number indicates the total quantity of the part in the delivery.
 *** **No torque specifications: Use the torque defined by vehicle manufacturer!** The standard torque in this table can be used as long as it is within the vehicle manufacturer's specifications.

2



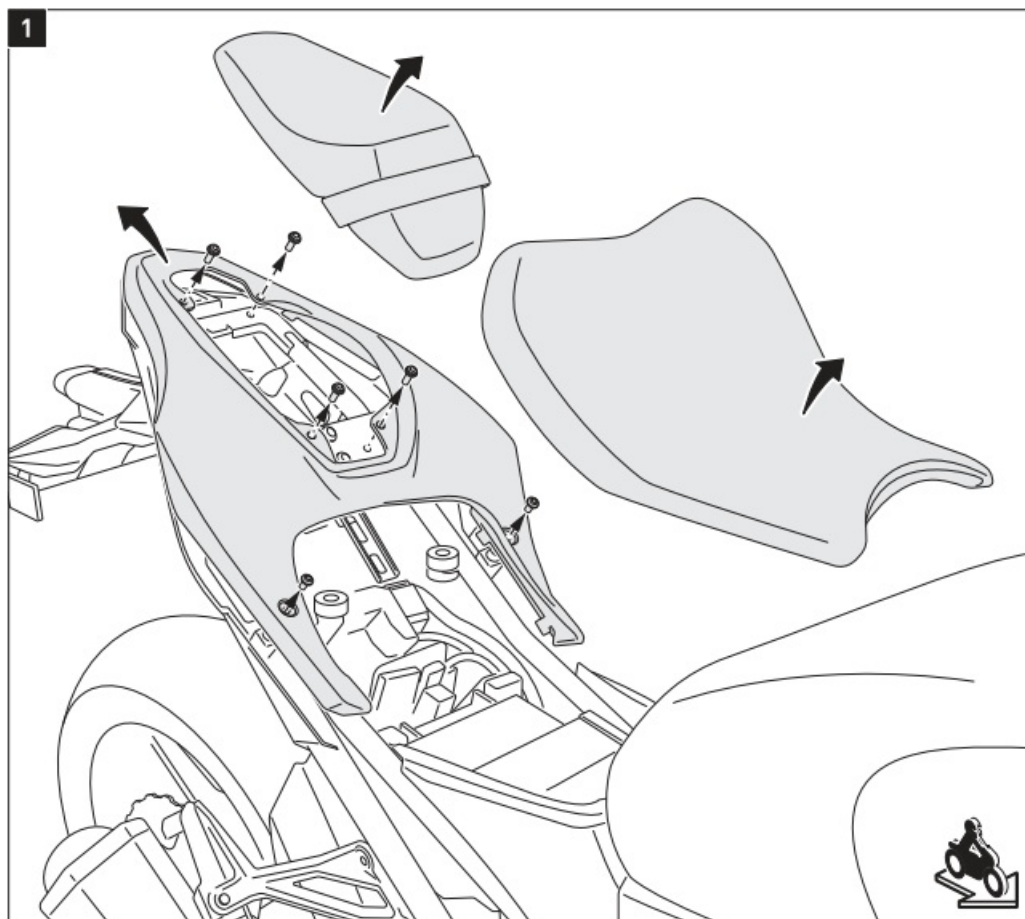
5



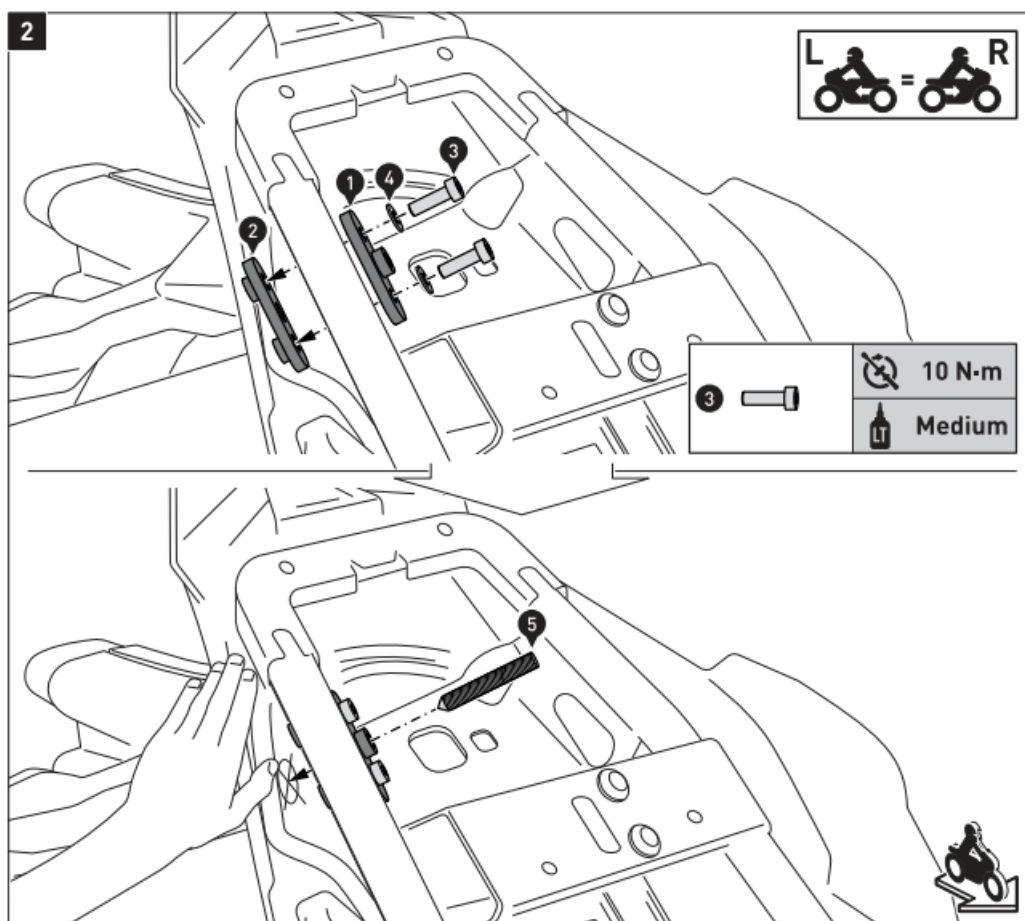
6



MOUNTING



Remove the seat and the screws from the vehicle, as shown in the drawing.
Take the rear panel off, by pulling it to the rear.



Attach the mounting bracket (1) and the counter bracket (2) to the opening in the rear frame, as shown in the drawing.

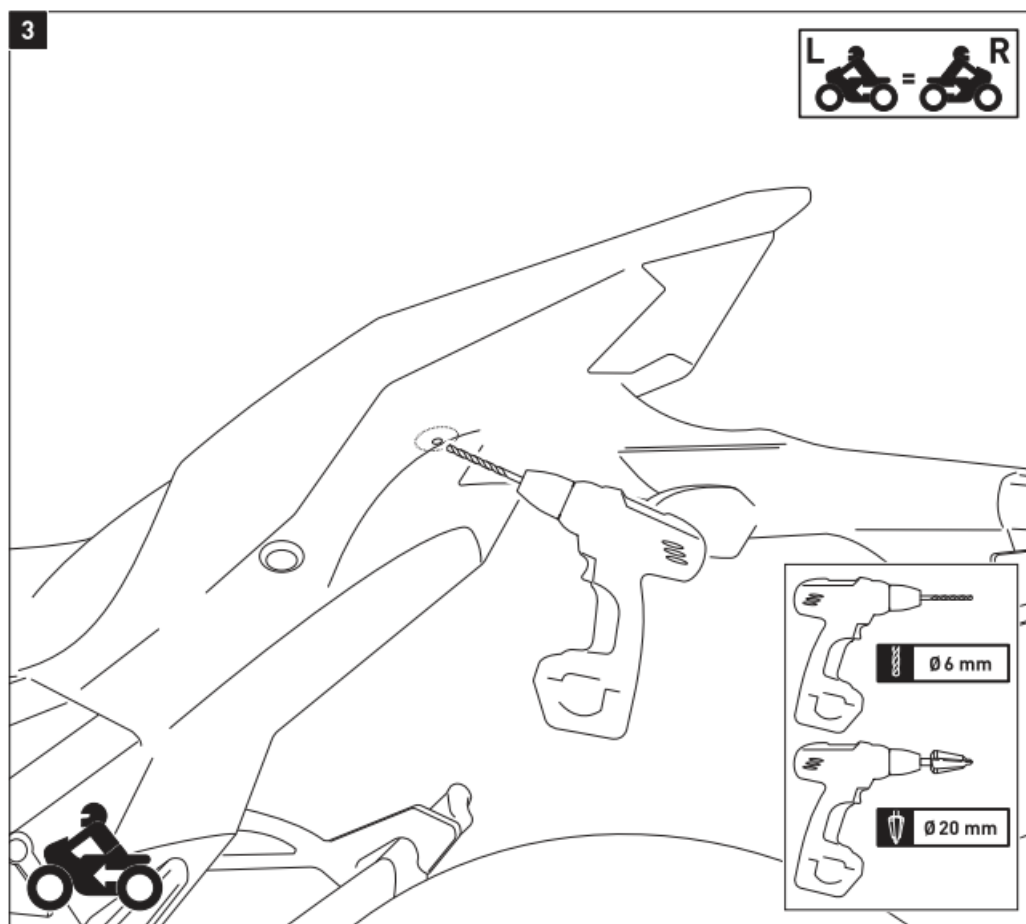
ATTENTION: Use liquid thread locker!

Tighten the screws as specified in the parts list.

Screw the threaded center punch (5) into the mounting bracket (1) until the point hits the fairing of the vehicle.

With a light hit of the flat hand to the outside of the fairing marks the center for the drilling.

Remove the threaded center punch (5).



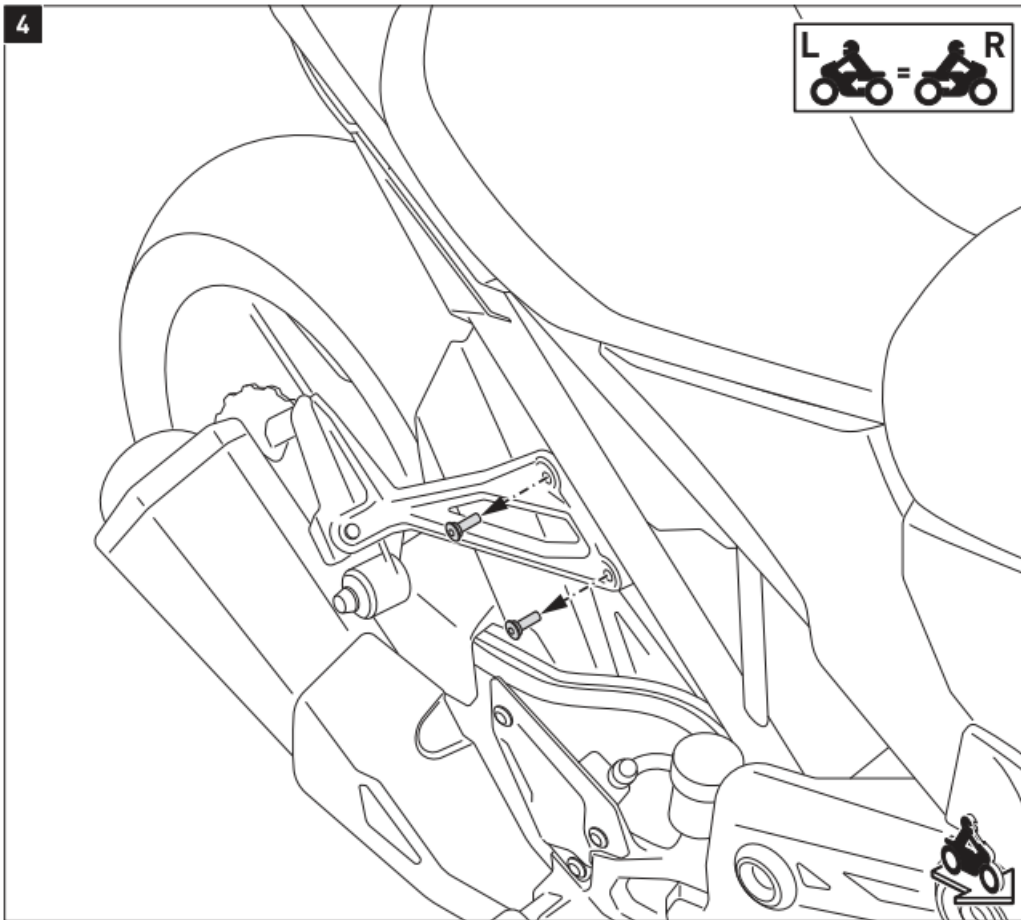
Use the indents for the center points.

Use a 6 mm drill to drill the mountings holes.

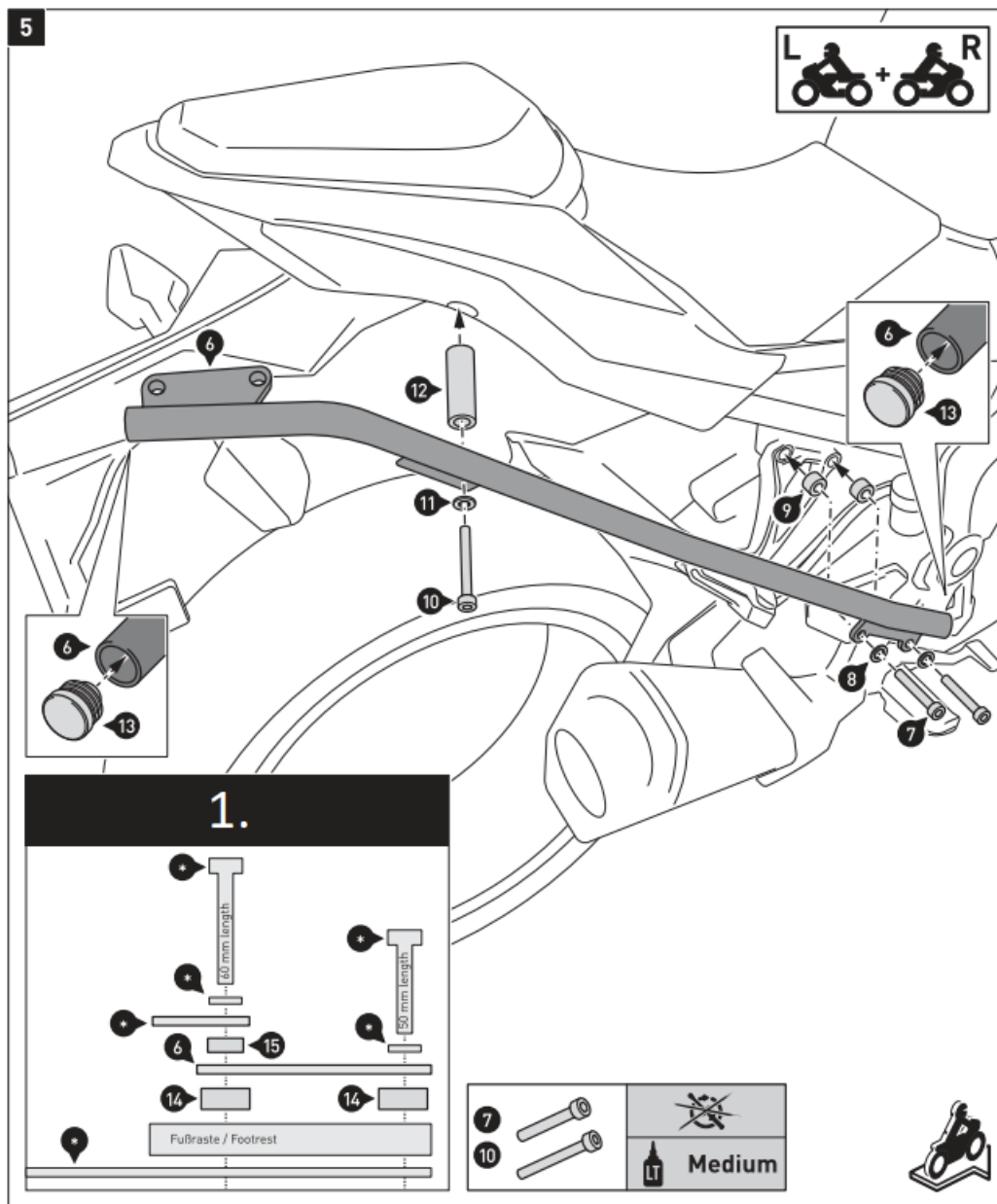
Use a stepped drillbit to enlarge the mountings holes to 20 mm Deburr the edges of the mounting holes.

Reinstall the fairing and the seats removed in step [2].

4



Loosen the screws of the passenger footrest mount, as shown in the drawing.



1. with BLAZE® saddlebags set

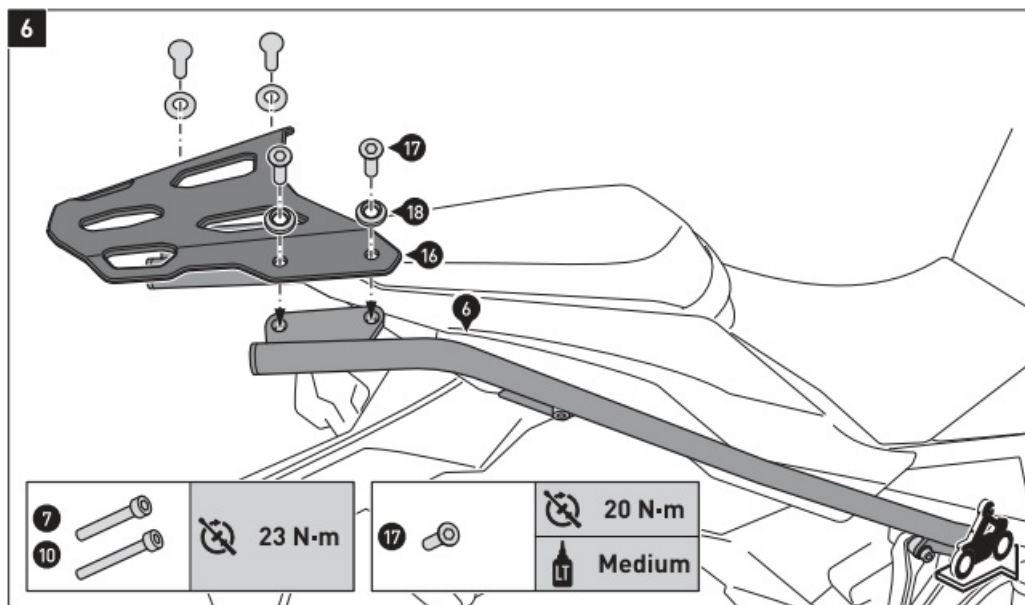
NOTE: When mounting the luggage carrier in combination with the SW-MOTECH Blaze set, use the screws and washers of the Blaze set (*) and the spacers (14) and (15), as shown in the detail drawings.

Insert the plastic plugs (13) into the openings of the mounting struts (6).

Attach the mounting struts (6) on both sides to the vehicle, as shown in the drawing.

ATTENTION: Use liquid thread locker!

Do not fully tighten the screws yet.



Attach the luggage rack (16) on both sides to the mounting struts (6), as shown in the drawing.

ATTENTION: Use liquid thread locker!

Tighten the screws as specified.

MOUNTING INSTRUCTIONS

Item No.: **GPT.00.152.54500/B** Revision: **00** · Date: **03 – 2018**

Luggage rack extension for STREET-RACK

Thank you for choosing this premium product from SW-MOTECH. Please visit our webshop for additional information, such as application charts and PDF mounting instructions. Any other documents that may be required (e.g. ABE certifications), are also available for download at our webshop.

Installation and/or maintenance of this product require good technical understanding! For your own safety SW-MOTECH recommends having installation and/or servicing carried out by a specialist workshop! SW-MOTECH assumes no liability for damage caused by improper installation and/or maintenance work!

Carefully follow all the directions given in the mounting instructions and pay attention to all relevant information in the vehicle manual during assembly. Nonconformance can lead to vehicle damage or even endanger the driver! These mounting instructions are written based on our current state of knowledge. Legal requirements for accuracy do not exist.

This product was developed for vehicles in their factory setting. Compatibility with original accessory parts or other manufacturers' accessory parts is not guaranteed. Furthermore, **BEFORE** installing this product, make sure that all moving parts (e.g. the chain) are in the original state of maintenance. Installed accessories can change the driving behaviour and/or stability of your vehicle.

GENERAL INFORMATION

Observe the country-specific regulations concerning vehicle registration/ operation as well as TUV regulations if applicable. If required, register installed parts in the vehicle documents through an appropriate inspection

authority.

PREPARATION: Read the mounting instructions carefully and make sure that all items of the parts list are included. Make sure that your vehicle is parked safely and cannot fall over. Turn off the engine and remove the ignition key. Let the motor/exhaust cool off if necessary. Disconnect the vehicle battery when working on the electrical system. Use appropriate tools. Have another person to help you.

MOUNTING: All parts and connections removed from the vehicle must be reinstalled in accordance with the vehicle manufacturers' specifications or replaced by parts delivered by SW-MOTECH. Secure all threads, unless otherwise specified, with medium-strength liquid thread locker.

Torque specifications undefined by SW-MOTECH must be obtained from the vehicle manufacturer or by a specialist workshop!

FUNCTION CHECK: After installation make sure that all parts and connections previously removed are properly replaced. Also make sure that no moving parts are obstructed and no function of the vehicle is hindered in any way. Cables and hoses must not rub and/or be pinched. Before starting to ride, perform a comprehensive check of all functions. After the first 50 km and then at regular intervals, check the tightening torque of all screw connections and the proper fit of the product.

Packed by:	Date of packaging:	<div data-bbox="901 817 1316 884"> SW-MOTECH®</div> <div data-bbox="750 896 1141 929">SW-MOTECH GmbH & Co. KG</div> <div data-bbox="750 963 1013 1064">Ernteweg 8/10 35282 Rauschenberg Germany</div> <div data-bbox="750 1097 1220 1131">Tel. / phone + 49 (0)6425 / 8168 – 050</div> <div data-bbox="750 1131 1165 1164">Fax / fax + 49 (0)6425 / 8168 – 10</div> <div data-bbox="750 1198 1045 1220">info@sw-motech.com</div> <div data-bbox="750 1232 1029 1254">www.sw-motech.com</div>
------------	--------------------	--

PARTS LIST

Step	No.	Item No. / Description*	Part	Quantity**	N•m***
	(1)	GPT.00.152.502	Adapter Nate	1 /1	
	(2)	GPT.00.152.048	Luggage Rack Extension	1 /1	
	(3)	M6 x 14; ISO 7380	Lenshead Screw; Mack	4 /4	9
	(4)	M6; DIN 985	Lock Nut	4 /4	

8.8	Coarse Thread Ø	M4	M5	M6	M8	M10	M12
	Steel CL 8.8 N•m	2,8	5,5	9,6	23	46	79

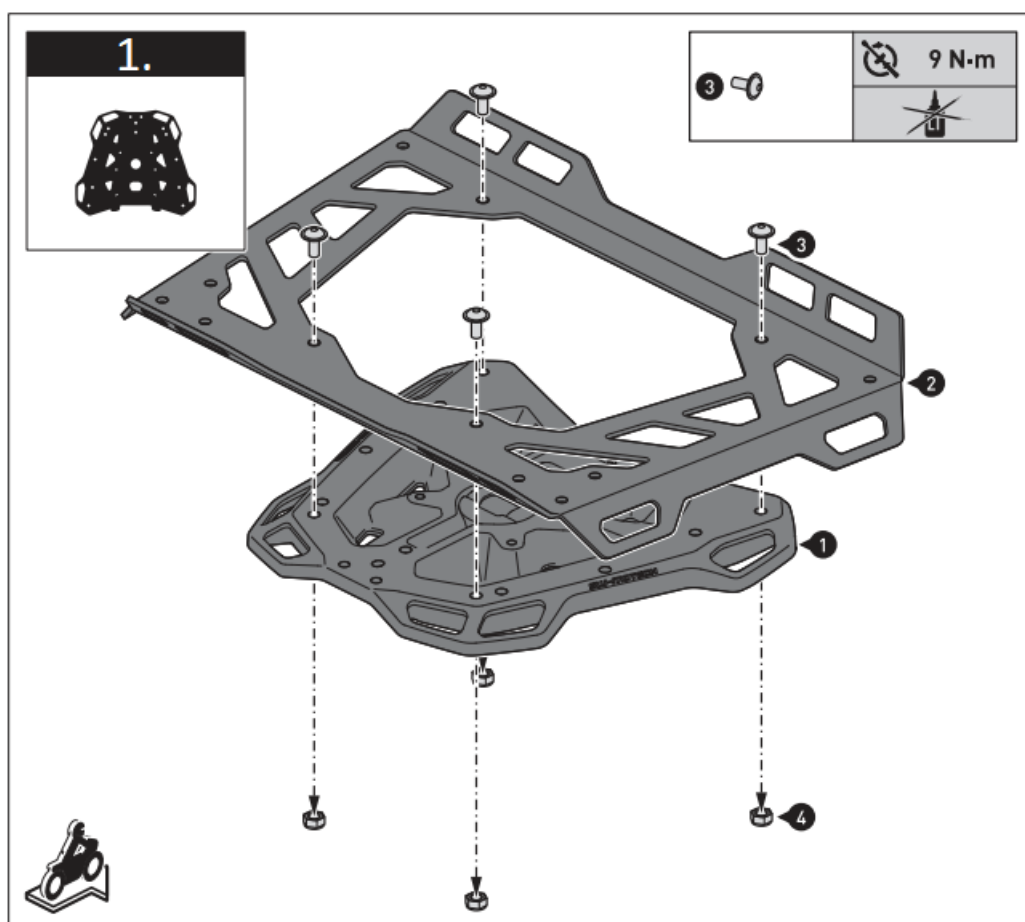
10.9	Coarse Thread Ø	M4	M5	M6	M8	M10	M12
	Steel CL 10.9 N•m	4,1	8,1	14	34	67	115

* All measurements in millimeters. . ** The second number indicates the total quantity of the part in the delivery.

*** **No torque specifications: Use the torque defined by vehicle manufacturer!** The standard torque in this table can be used as long as it is within the vehicle manufacturer's specifications.



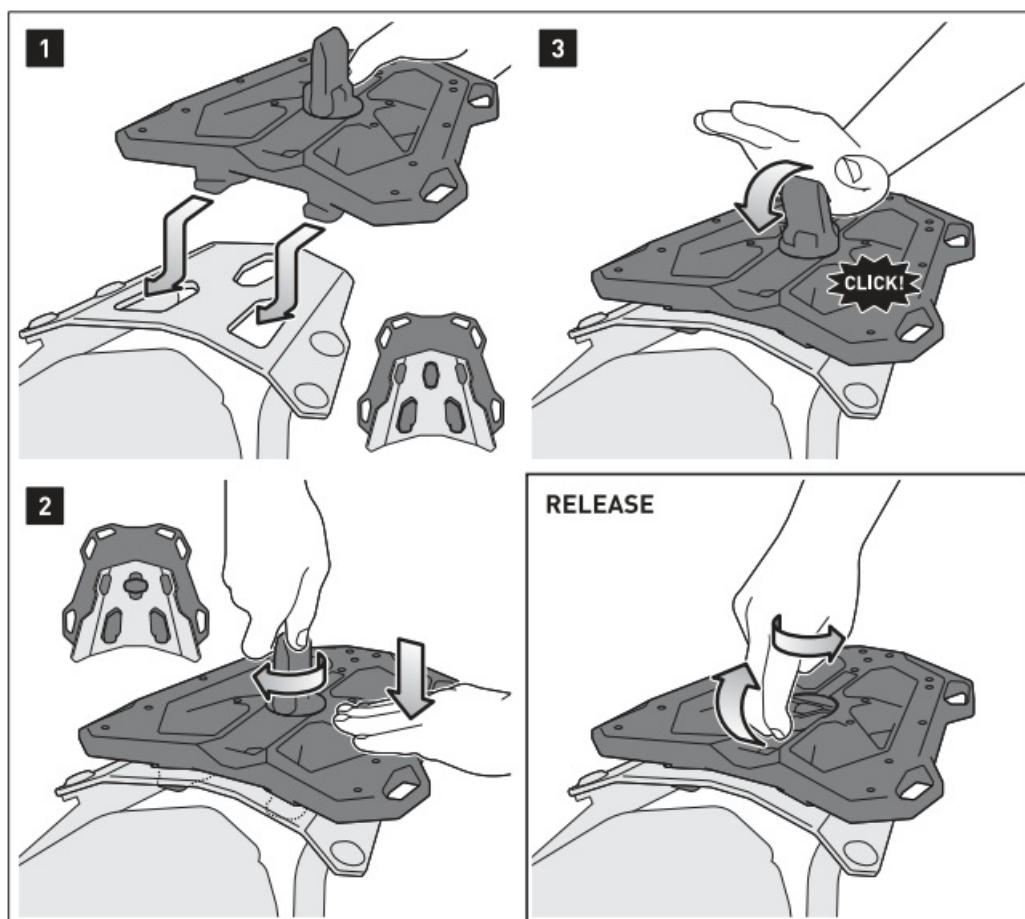
MOUNTING



1. Adapter plate for STREET-RACK

Adapter plate for STREET-RACK

Attach the shown parts to the adapter plate for STREET-RACK (1). Tighten the screws as specified in the parts list.



Mounting the adapter plate on the STREET-RACK.

Step [1]: Slide the adapter plate (1) with the two hooks into the holes of your STREET-RACK (sold separately).

Step [2]: Press the adapter plate (1) slightly downwards and turn the fastener 90 degrees until it fits into place.

Step [3]: Finally, press the lock firmly down as shown in the drawing.

To **release** the adapter plate, simply pull the fastener upwards and turn it to the starting position.

MOUNTING INSTRUCTIONS

Item No.: **BC.HTA.00.305.3000*** Revision: **00** · Date: **09 – 2020**

PRO Rackpack tail bag

Thank you for choosing this premium product from SW-MOTECH. Please visit our webshop for additional information, such as application charts and PDF mounting instructions. Any other documents that may be required (e.g. ABE certifications), are also available for download at our webshop.

Installation and/or maintenance of this product require good technical understanding! For your own safety SW-MOTECH recommends having installation and/or servicing carried out by a specialist workshop! SW-MOTECH assumes no liability for damage caused by improper installation and/or maintenance work!

Carefully follow all the directions given in the mounting instructions and pay attention to all relevant information in the vehicle manual during assembly. Nonconformance can lead to vehicle damage or even endanger the driver! These mounting instructions are written based on our current state of knowledge. Legal requirements for accuracy do not exist.

This product was developed for vehicles in their factory setting. Compatibility with original accessory parts or other manufacturers' accessory parts is not guaranteed. Furthermore, BEFORE installing this product, make sure that all moving parts (e.g. the chain) are in the original state of maintenance. Installed accessories can change the driving behaviour and/or stability of your vehicle.

GENERAL INFORMATION

Observe the country-specific regulations concerning vehicle registration/ operation as well as TUV regulations if applicable. If required, register installed parts in the vehicle documents through an appropriate inspection authority.

PREPARATION: Read the mounting instructions carefully and make sure that all items of the parts list are included. Make sure that your vehicle is parked safely and cannot fall over. Turn off the engine and remove the ignition key. Let the motor/exhaust cool off if necessary. Disconnect the vehicle battery when working on the electrical system. Use appropriate tools. Have another person to help you.

FUNCTION CHECK: This is a universal product. For this reason make sure BEFORE the first use, that the product can be fixed properly and used without problems with your vehicle type. After fixation also make sure that no moving parts are obstructed and the function of the vehicle is not hindered in any way. Lamps as taillight and turn signals must not be limited in their function. Cables and hoses must not rub and/or be pinched. Before starting to ride, perform a comprehensive check of all functions.



All components of the product must not contact any hot or moving parts of the vehicle. All parts should also remain 5 cm away from hot parts of the vehicle and remain clear of the exhaust stream. For this reason compress the suspension fully several times with your vehicle stationary.

ATTENTION: Before riding and at each stop (every 200 km) check proper fixation of the product!


PRODUCT SPECIFIC INFORMATION

ATTENTION: Riding with this product may affect the motorcycles driving and braking performance! Cornering and ground clearance can be reduced by using this product!

ATTENTION: Modifications will void any warranty.

Maximum Load	Maximum Speed
 10 KG (22 lbs)	 130 km/h (80 mph)

ATTENTION: The maximum vehicle load specified by the manufacturer must not be exceeded!

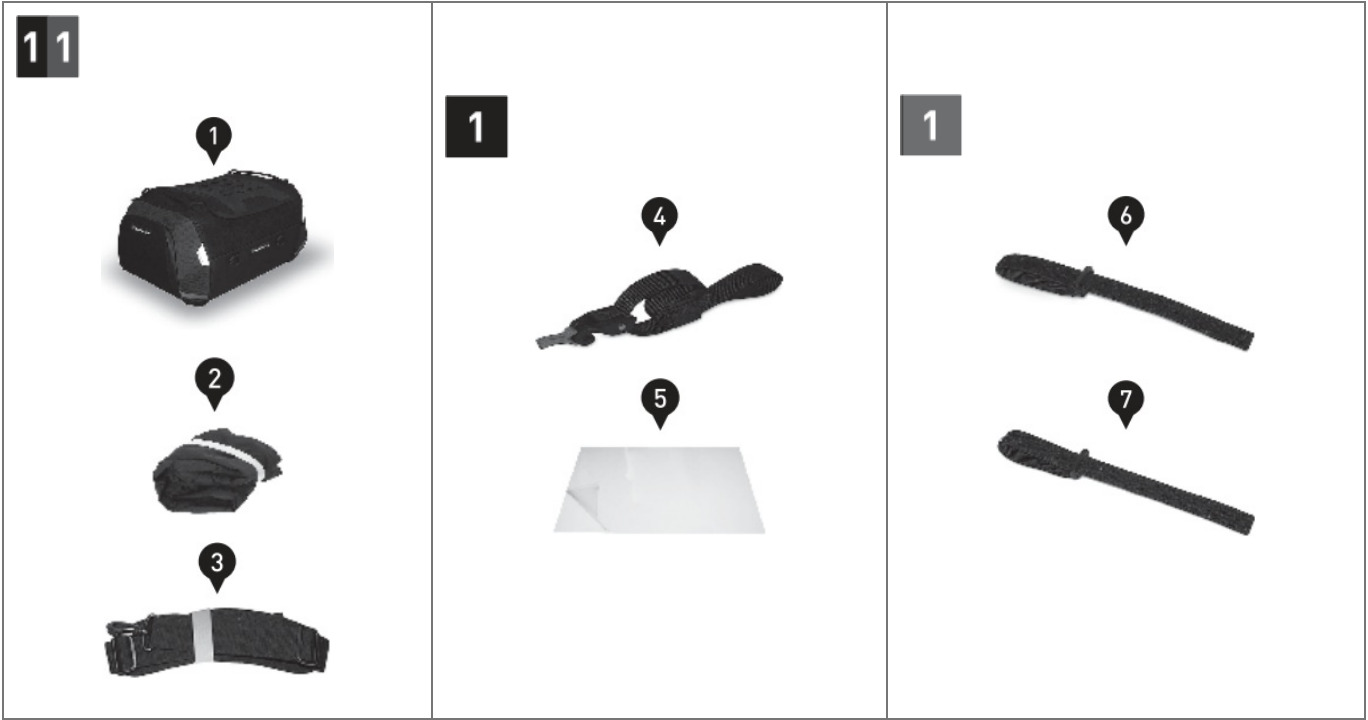
ATTENTION	
NOT FOR OFFROAD-USE!	

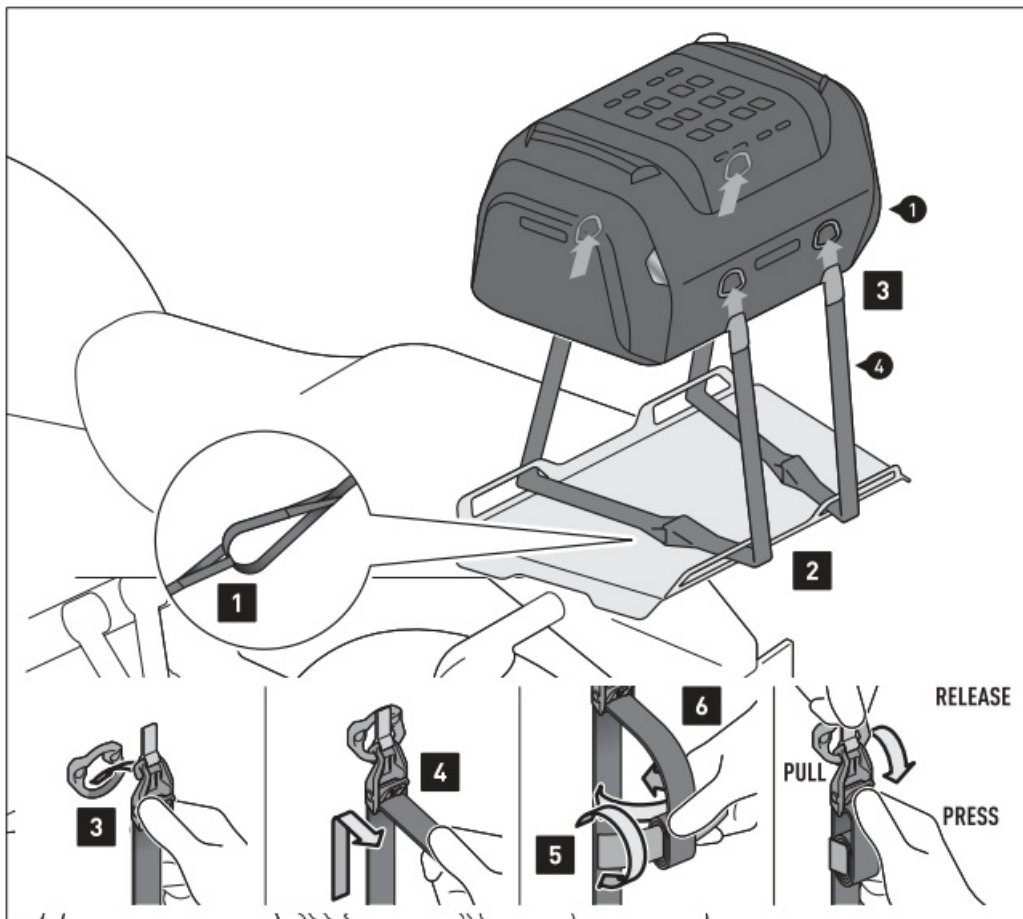
8.8	Coarse Thread Ø	M4	M5	M6	M8	M10	M12
	Steel CL 8.8 N·m	2,8	5,5	9,6	23	46	79

10.9	Coarse Thread Ø	M4	M5	M6	M8	M10	M12
	Steel CL 10.9 N·m	4,1	8,1	14	34	67	115

Note: ^a All measurements in millimeters. ^b The second number indicates the total quantity of the part in the delivery.

^c **No torque specifications: Use the torque defined by vehicle manufacturer!** The standard torque in this table can be used as long as it is within the vehicle manufacturer’s specifications.





The luggage rack extension and the vehicle are examples.

FIXED ON THE LUGGAGE RACK EXTENSION

Step [1]: Loop two loop straps (4) together.

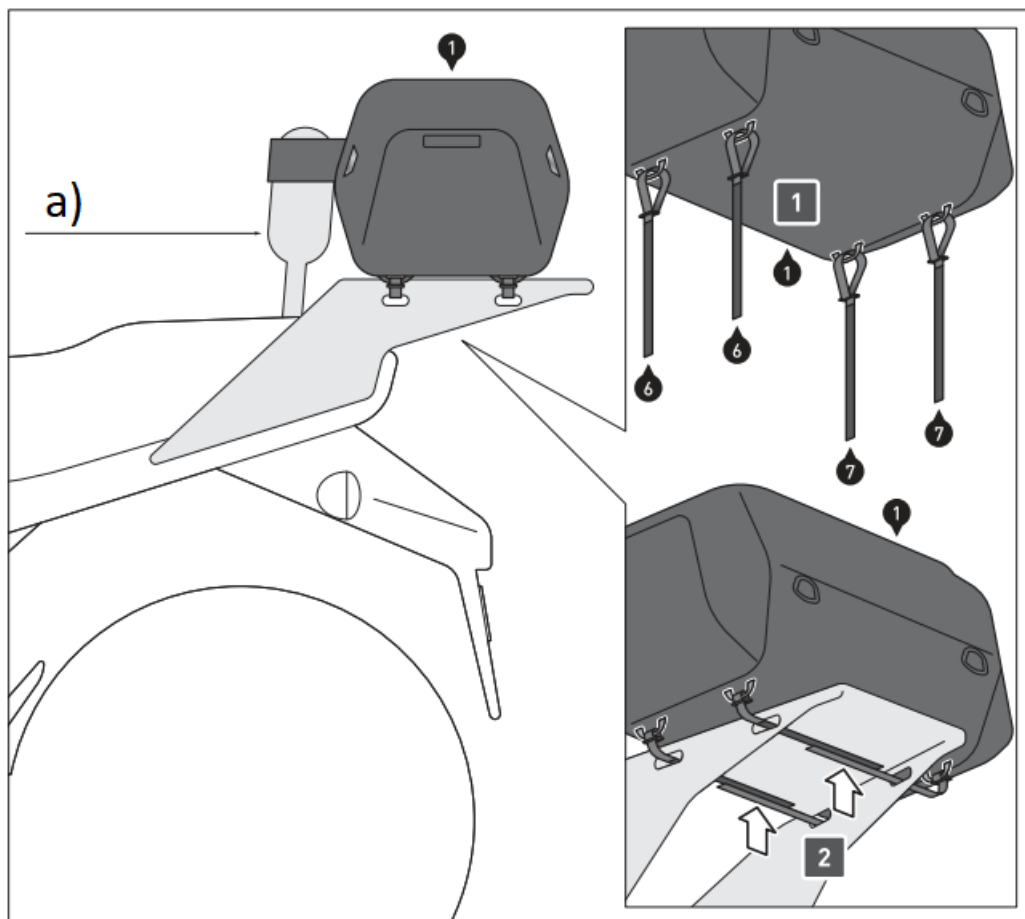
Step [2]: Guide the loop straps (4) through the shown openings of the example luggage rack extension.

Step [3]: Hook the cam-hooks of the loop straps (4) onto the D-rings of the tail bag (1).

Step [4]: Pull the loop straps (4) on all four cam-hooks tight.

Step [5]: Roll up the excess lengths of the loop straps (4) ...

Step [6]: ... and fix it with the velcro straps.



The luggage rack extension and the vehicle are examples.

a) backrest

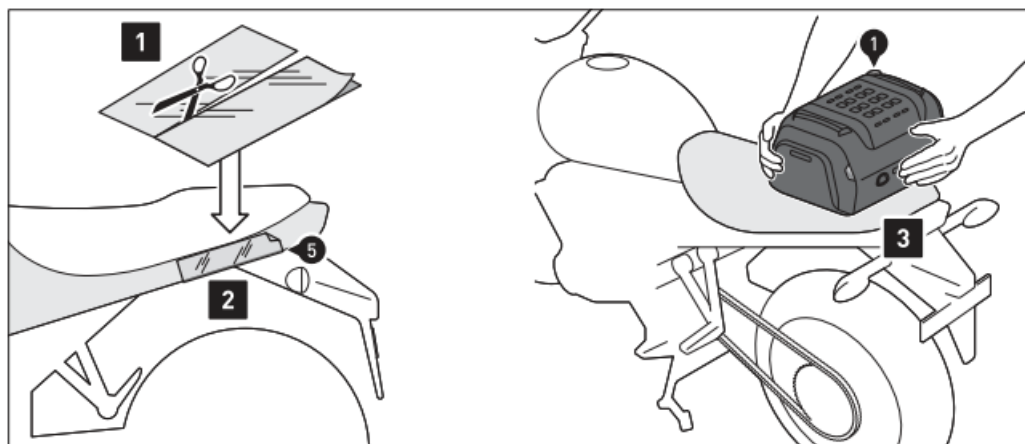
FASTENING TO THE LUGGAGE RACK

Step [1]: Loop the velcro straps (6) and (7) onto the loop at the bottom of the tail bag (1). Make sure that the loop and hook sides can be easily attached.

Place the tail bag (1) on the luggage rack.

Step [2]: Fasten the tail bag (1) to your luggage rack with the velcro straps (6) and (7). Make sure that the tail bag (1) is fastened in such a way that it cannot slip while driving.

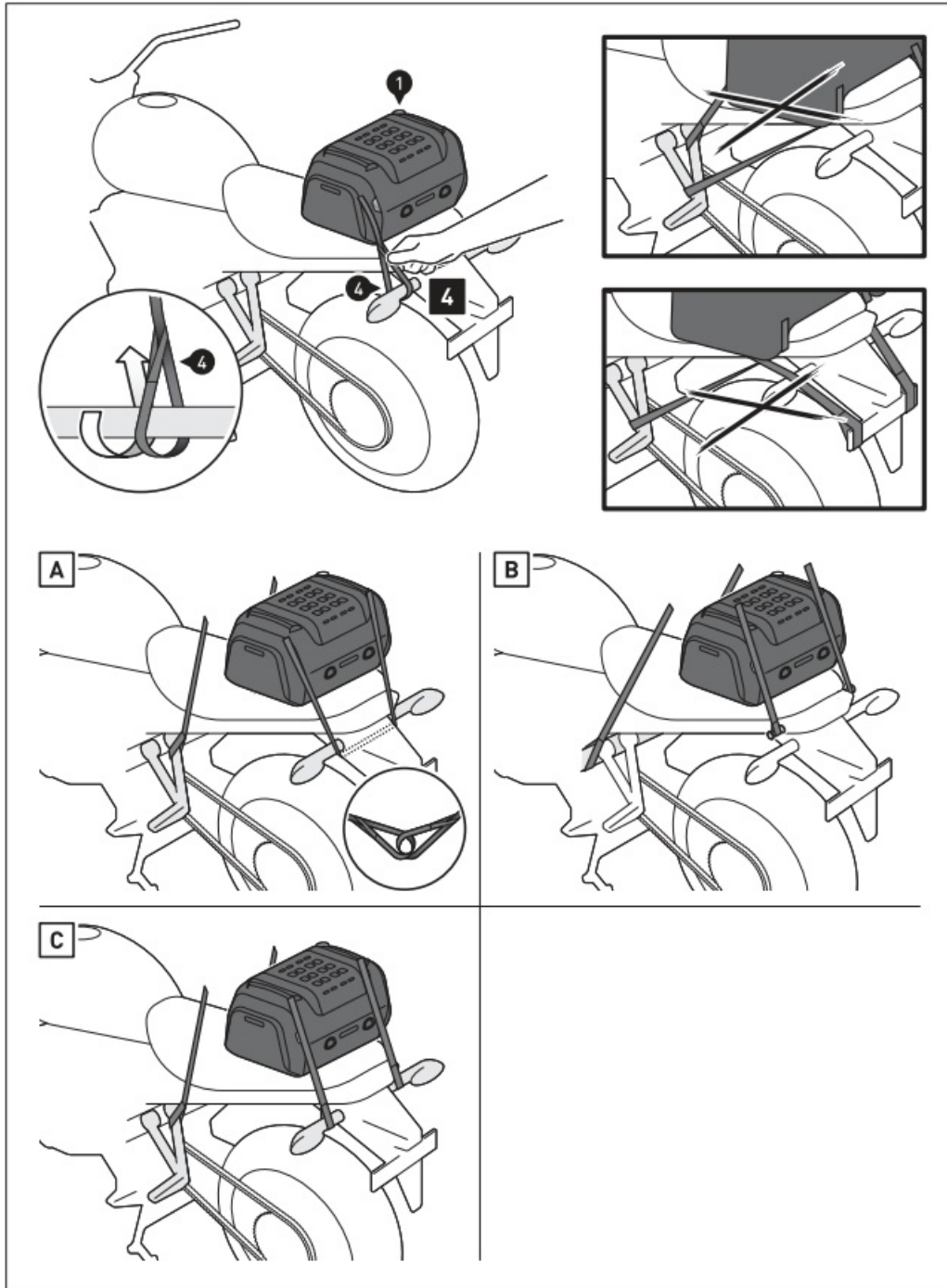
OPTIONAL: The velcro strap sewn on the front can be looped around the backrest to provide additional support.



UNIVERSAL FASTENING:

Step [1] & [2]: Cover the contact surfaces of the tail bag (1) with the protection foil (5). Clean the surface before applying the protection foil.

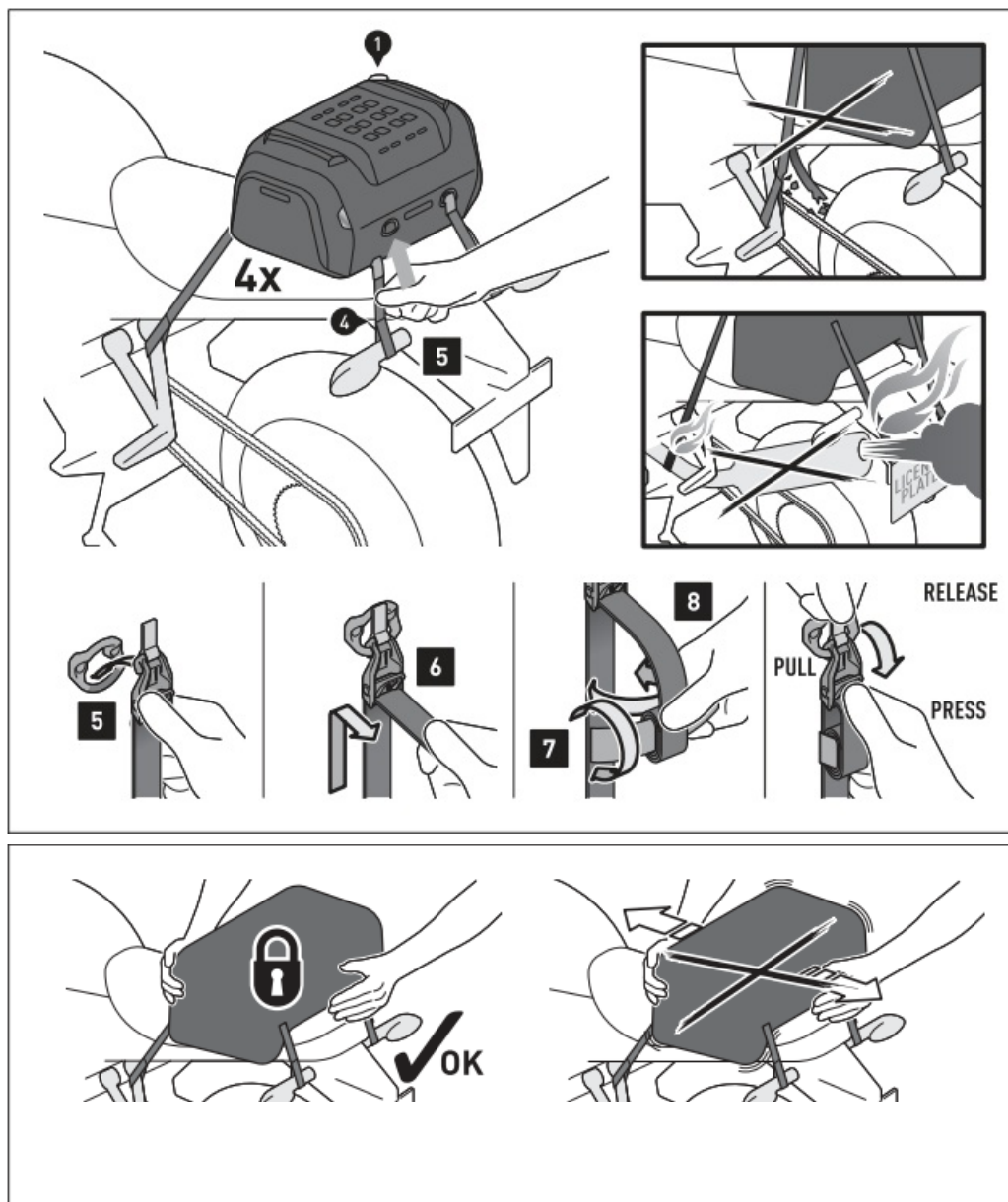
Step [3]: Place the tail bag (1) on the rear of the vehicle.



Example vehicle shown.

Step [4]: Entangle the loop straps (4) to **FOUR** suitable and loadable fastening points to the vehicle, as shown in the example illustrations [A] to [C] (e.g. vehicles frame, footrest mounts, luggage hook etc.).

ATTENTION: The fastening points must be chosen so that the tail bag (1) is secured against slipping! To do this, tension the tail bag (1) to the front at the two front fastening points and to the rear at the two rear fastening points!



Example vehicle shown.

Step [5]: Hook the cam-hooks of the FOUR loop straps (4) onto the D-rings of the tail bag (1).

Step [6]: Pull the loop straps (4) on all four cam-hooks tight until the tail bag (1) is centered and securely fastened to the vehicle.

Step [7]: Roll up the excess lengths of the loop straps (4) ...

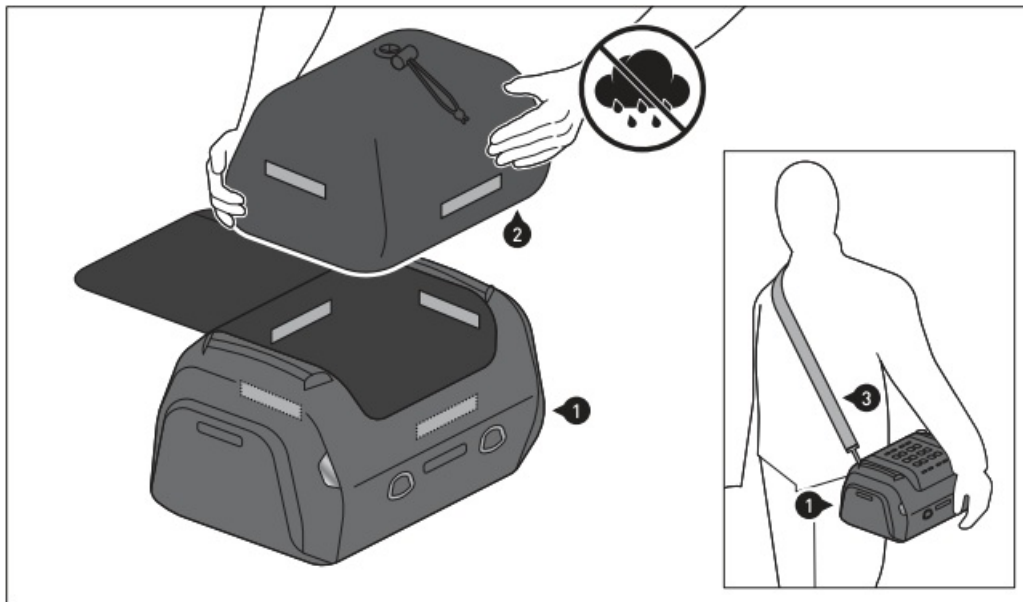
Step [8]: ... and fix it with the velcro straps.

ATTENTION: All components of the tail bag must not contact any hot or moving parts of the vehicle. All parts should also remain 5 cm away from hot parts of the vehicle and remain clear of the exhaust stream.

ALL FASTENING POSSIBILITIES

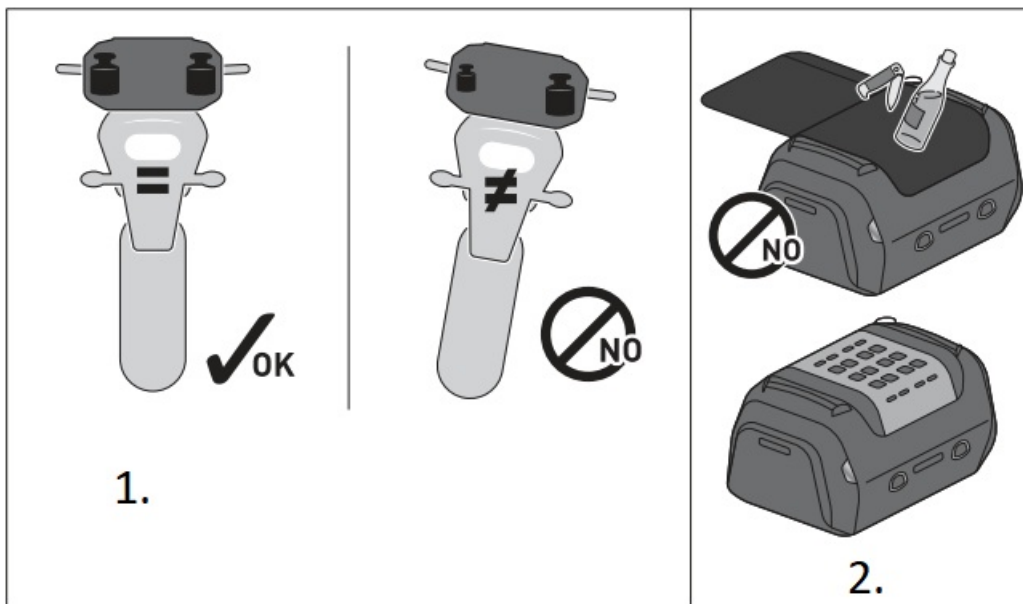
ATTENTION: Before riding and at each stop (every 200 km) check the proper fixation of the tail bag (1)!

LOADING AND CARE



ATTENTION: Always use the included waterproof innerbag (2) to protect your luggage from moisture!

Fasten the waterproof inner bag (2) to the velcro patch on the inside. Additionally protect sensitive luggage (e.g., electronic equipment) from moisture with a plastic bag.

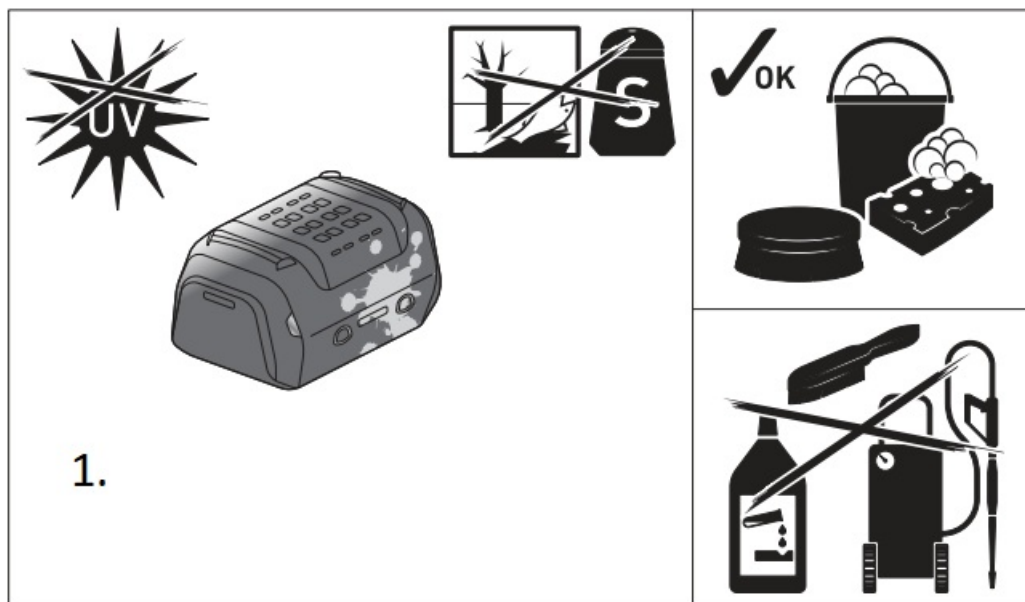


1. ATTENTION: Make sure weight is evenly distributed! Make sure that the banding is secured against shifting during the ride!

2. MOLLE attachment

LOADING: Never store pointy or sharp-edged objects, which could cause injury to persons or damage to the vehicle/product!

ONLY loop assigned SW-MOTECH products to the MOLLE attachment!



1. ATTENTION: Surface materials can experience color changes or fading when exposed to direct sunlight for extended periods of time and by environmental factors (e.g., SMOG, acid rain, etc.)! SW-MOTECH assumes no liability for this.

CARE: For cleaning use ONLY a soft textile brush, cloth or sponge and warm soapy water! Rinse with clean water.

Do NOT use strong cleaning agents, rough cleaning tools or high pressure washer!
Clean the product after riding in salty conditions, to avoid damage from salt.

Copyright by
SW-MOTECH GmbH & Co. KG

Errors and omissions excepted. Technical and design modifications are subject to change.

Documents / Resources

<p>ANBAUANLEITUNG</p> <p>GPT.08.868.30000</p> <p>GPT.08.868.16000-B, GPT.00.152.54500-B, BC.HTA.00.305.30000, GPT.08.868.30000 Backpack Set, Backpack Set, Set</p> <p>SW-MOTECH</p>	<p>SW-MOTECH GPT.08.868.30000 Backpack Set [pdf] Installation Guide</p> <p>GPT.08.868.30000, GPT.08.868.16000-B, GPT.00.152.54500-B, BC.HTA.00.305.30000, GPT.08.868.30000 Backpack Set, Backpack Set, Set</p>
---	--

References

- [User Manual](#)

[Manuals+](#), [Privacy Policy](#)