



# SW-MOTECH GPT.07.782.70001-B ADV Top Case System Instruction Manual

[Home](#) » [SW-MOTECH](#) » SW-MOTECH GPT.07.782.70001-B ADV Top Case System Instruction Manual 

## Contents

- 1 SW-MOTECH GPT.07.782.70001-B ADV Top Case System
- 2 Product Information
- 3 MOUNTING INSTRUCTIONS
- 4 PREPARATION
- 5 MOUNTING
- 6 PARTS LIST
- 7 LID AND LOCK CYLINDER SET
- 8 QUICK RELEASE FASTENER
- 9 Maintenance and cleaning of the quick release fastener
- 10 Documents / Resources
  - 10.1 References
- 11 Related Posts



**SW-MOTECH GPT.07.782.70001-B ADV Top Case System**



**Product Specifications**

Model Numbers: GPT.07.782.70001/B, GPT.07.782.19000/B, GPT.00.152.35100/B, ALK.00.733.15000/B, ALK.00.165.16503

**Product Information**

The product is designed to provide [brief description of the product and its main function]. It is suitable for [mention the target users or applications]. The product is manufactured with high-quality materials to ensure durability and reliability.

**Installation Instructions**

- 1. Step 1: [Provide step-by-step instructions on how to prepare the installation area]
- 2. Step 2: [Guide on how to assemble different components of the product]
- 3. Step 3: [Instructions on how to securely install the product in its designated location]
- 4. Step 4: [Any additional steps or tips for optimal installation]

**Operation Guide**

- 1. Step 1: [Explain how to power on the product]
- 2. Step 2: [Describe the basic functions and controls of the product]
- 3. Step 3: [Provide tips on how to optimize the performance of the product]

**Maintenance**

To ensure the product's longevity and performance, it is recommended to [mention maintenance tasks such as cleaning, inspections, etc.]. Regular maintenance will prolong the lifespan of the product.

**Product FAQ**

- **Q: How often should I perform maintenance on the product?**

- **A:** It is advised to perform maintenance tasks [specify frequency, e.g., monthly, quarterly] to keep the product in optimal condition.

- **Q: Can I use the product outdoors?**

- **A:** The product is designed for [indoor/outdoor] use. Ensure to follow the manufacturer's guidelines for outdoor usage.

## **Mounting instructions**

**GPT.07.782.70001/S**

### **contains**

- GPT.07.782.19000/B
- GPT.00.152.35100/B
- ALK.00.733.15000/S
- ALK.00.165.16503

## **MOUNTING INSTRUCTIONS**

**Revision:** 01 –

**Datum / Date:** 03 – 2018

### **ADVENTURE-RACK**

- Thank you for choosing this premium product from SW-MOTECH. Please visit our webs hop for additional information, such as application charts and PDF mounting instructions. Any other documents that may be required (e.g. ABE certifications), are also available for download at our webshop.
- Installation and/or maintenance of this product require good technical understanding! For your own safety SW-MOTECH recommends having installation and/or servicing carried out by a specialist workshop! SW-MOTECH assumes no liability for damage caused by improper installation and/or maintenance work!
- Carefully follow all the directions given in the mounting instructions and pay attention to all relevant information in the vehicle manual during assembly. Nonconformance can lead to vehicle damage or even endanger the driver! These mounting instructions are written based on our current state of knowledge. Legal requirements for accuracy do not exist.
- This product was developed for vehicles in their factory setting. Compatibility with original accessory parts or other manufacturers' accessory parts is not guaranteed. Furthermore, BEFORE installing this product, make sure that all moving parts (e.g. the chain) are in the original state of maintenance. Installed accessories can change the driving behaviour and/or stability of your vehicle.

### **GENERAL INFORMATION**

Observe the country-specific regulations concerning vehicle registration/ operation as well as TUV regulations if applicable. If required, register installed parts in the vehicle documents through an appropriate inspection authority.

## PREPARATION

Read the mounting instructions carefully and make sure that all items of the parts list are included. Make sure that your vehicle is parked safely and cannot fall over. Turn off the engine and remove the ignition key. Let the motor/exhaust cool off if necessary. Disconnect the vehicle battery when working on the electrical system. Use appropriate tools. Have another person to help you.

## MOUNTING

All parts and connections removed from the vehicle must be reinstalled in accordance with the vehicle manufacturers' specifications or replaced by parts delivered by SW-MOTECH. Secure all threads, unless otherwise specified, with medium-strength liquid thread locker.

Torque specifications undefined by SW-MOTECH must be obtained from the vehicle manufacturer or by a specialist workshop!

**FUNCTION CHECK:** After installation make sure that all parts and connections previously removed are properly replaced. Also make sure that no moving parts are obstructed and no function of the vehicle is hindered in any way. Cables and hoses must not rub and/or be pinched. Before starting to ride, perform a comprehensive check of all functions. After the first 50 km and then at regular intervals, check the tightening torque of all screw connections and the proper fit of the product.

**ATTENTION:** The indicated maximum load is inclusive the weight of topcase/luggage and adapter kit! The maximum vehicle load specified by the manufacturer must not be exceeded!

- Packed by
- Date of packaging

## SW-MOTECH GmbH & Co. KG

- Ernteweg 8/10  
35282 Rauschenberg Germany
- **Tel./** phone+ 49 (0)6425 / 8168 – 050
- **Fax /** fax+ 49 (0)6425 / 8168 – 10
- [info@sw-motech.com](mailto:info@sw-motech.com)
- [www.sw-motech.com](http://www.sw-motech.com)

## PARTS LIST

| Part                  | Anzahl **<br>Quantity ** | N·m *** |
|-----------------------|--------------------------|---------|
| Mounting Bracket      | 1 / 1                    |         |
| Lenshead Screw; black | 4 / 4                    | 8       |
| Spacer; black         | 4 / 4                    |         |
|                       |                          |         |
| Luggage Rack          | 1 / 1                    |         |
| Lenshead Screw; black | 4 / 4                    | 9,6     |
| Washer; black         | 4 / 4                    |         |

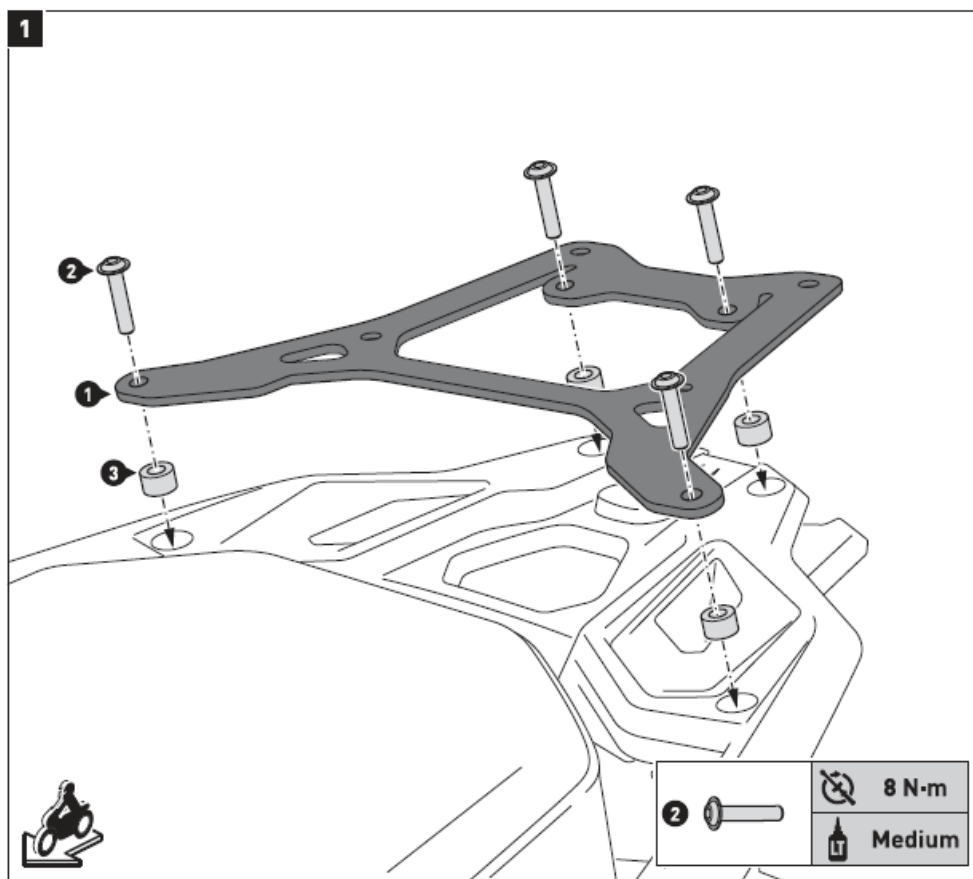
| 8.8 | Coarse Thread Ø |     |     |     |     |    | 10.9 | Coarse Thread Ø |     |               |     |     |    |    |    |     |
|-----|-----------------|-----|-----|-----|-----|----|------|-----------------|-----|---------------|-----|-----|----|----|----|-----|
|     | Steel CL 8.8    | N·m | M4  | M5  | M6  | M8 |      | M10             | M12 | Steel CL 10.9 | N·m | M4  | M5 | M6 | M8 | M10 |
|     |                 |     | 2.8 | 5.5 | 9.6 | 23 | 46   | 79              |     |               | 4.1 | 8.1 | 14 | 34 | 67 | 115 |

- All measurements in millimeters.
- The second number indicates the total quantity of the part in the delivery.
- No torque specifications: Use the torque defined by vehicle manufacturer! The standard torque in this table can be used as long as it is within the vehicle manufacturer's specifications.



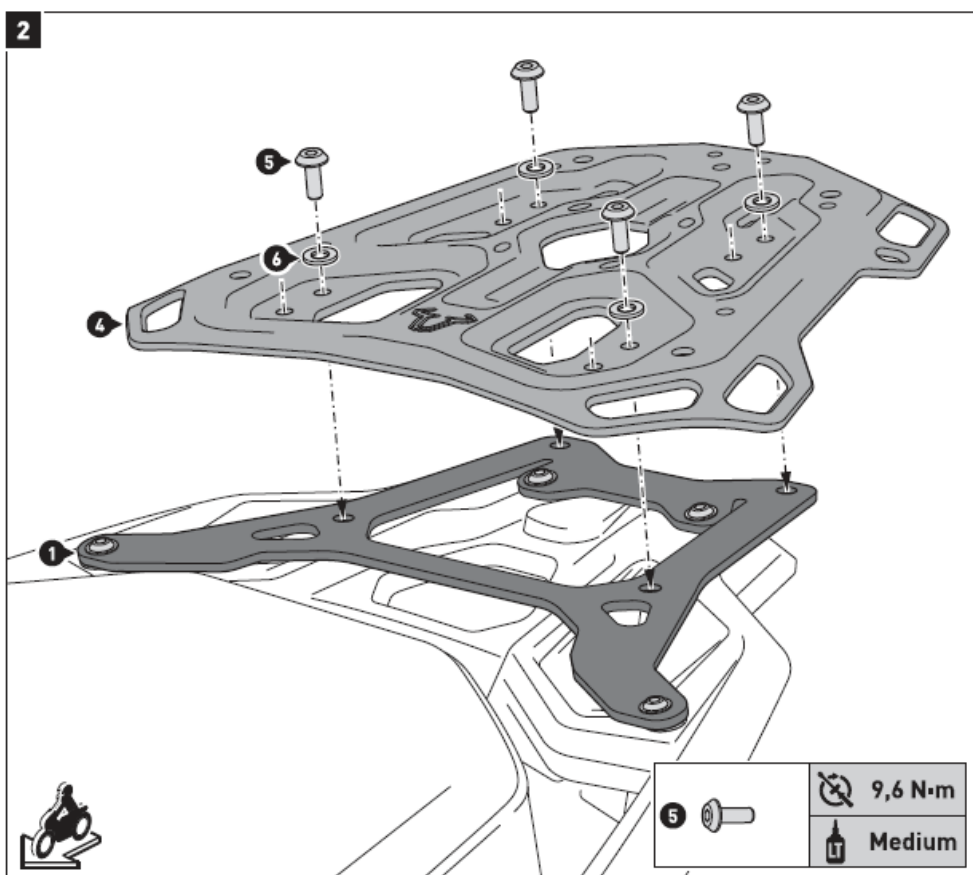
## MOUNTING

- Attach the mounting bracket (1) to the vehicle, as shown in the drawing.  
**ATTENTION:** Use liquid thread locker!
- Tighten the screws as specified in the parts list.



**NOTE:** Choose the marked front or rear mounting position according to your preferences. Attach the luggage rack (4) to the mounting bracket (1), as shown in the drawing.

**ATTENTION:** Use liquid thread locker!  
Tighten the screws as specified in the parts list.



## MOUNTING INSTRUCTIONS

- **Revision:** 00 –
- **Datum / Date:** 01 – 2018

### Adapter kit for ADVENTURE-/STREET-RACK -TRAX

- Thank you for choosing this premium product from SW-MOTECH. Please visit our webshop for additional information, such as application charts and PDF mounting instructions. Any other documents that may be required (e.g. ABE certifications), are also available for download at our webshop.
- Installation and/or maintenance of this product require good technical understanding! For your own safety SW-MOTECH recommends having installation and/or servicing carried out by a specialist workshop! SW-MOTECH assumes no liability for damage caused by improper installation and/or maintenance work!
- Carefully follow all the directions given in the mounting instructions and pay attention to all relevant information in the vehicle manual during assembly. Nonconformance can lead to vehicle damage or even endanger the driver! These mounting instructions are written based on our current state of knowledge. Legal requirements for accuracy do not exist.
- This product was developed for vehicles in their factory setting. Compatibility with original accessory parts or other manufacturers' accessory parts is not guaranteed. Furthermore, BEFORE installing this product, make sure that all moving parts (e.g. the chain) are in the original state of maintenance. Installed accessories can change the driving behaviour and/or stability of your vehicle.

### GENERAL INFORMATION

Observe the country-specific regulations concerning vehicle registration/ operation as well as TUV regulations if applicable. If required, register installed parts in the vehicle documents through an appropriate inspection authority.

**PREPARATION:** Read the mounting instructions carefully and make sure that all items of the parts list are included. Make sure that your vehicle is parked safely and cannot fall over. Turn off the engine and remove the ignition key. Let the motor/exhaust cool off if necessary. Disconnect the vehicle battery when working on the electrical system. Use appropriate tools. Have another person to help you.

**MOUNTING:** All parts and connections removed from the vehicle must be reinstalled in accordance with the vehicle manufacturers' specifications or replaced by parts delivered by SW-MOTECH. Secure all threads, unless otherwise specified, with medium-strength liquid thread locker.

Torque specifications undefined by SW-MOTECH must be obtained from the vehicle manufacturer or by a specialist workshop!

**FUNCTION CHECK:** After installation make sure that all parts and connections previously removed are properly replaced. Also make sure that no moving parts are obstructed and no function of the vehicle is hindered in any way. Cables and hoses must not rub and/or be pinched. Before starting to ride, perform a comprehensive check of all functions. After the first 50 km and then at regular intervals, check the tightening torque of all screw connections and the proper fit of the product.

- Packed by
- Date of packaging

- Ernteweg 8/10
- 35282 Rauschenberg Germany
- **Tel./ phone+** 49 (0)6425 / 8168 – 050
- **Fax / fax+** 49 (0)6425 / 8168 – 10
- [info@sw-motech.com](mailto:info@sw-motech.com)
- [www.sw-motech.com](http://www.sw-motech.com)

## PARTS LIST

| Part                     | Anzahl **<br>Quantity ** | N·m *** |
|--------------------------|--------------------------|---------|
| Latch Hook               | 1 / 1                    |         |
| Lenshead Screw           | 2 / 2                    | 9       |
| Lock Nut with Flange     | 2 / 2                    |         |
| Guide Bolt               | 4 / 4                    |         |
| Plastic Cap              | 4 / 4                    |         |
| Countersunk Screw; black | 4 / 4                    | 7       |
| Lock Nut                 | 4 / 4                    |         |

| 8.8 | Coarse Thread Ø  |  | M4  | M5  | M6  | M8 | M10 | M12 | 10.9 | Coarse Thread Ø   |  | M4  | M5  | M6 | M8 | M10 | M12 |
|-----|------------------|--|-----|-----|-----|----|-----|-----|------|-------------------|--|-----|-----|----|----|-----|-----|
|     | Steel CL 8.8 N·m |  | 2,8 | 5,5 | 9,6 | 23 | 46  | 79  |      | Steel CL 10.9 N·m |  | 4,1 | 8,1 | 14 | 34 | 67  | 115 |

- All measurements in millimeters.
- The second number indicates the total quantity of the part in the delivery.
- No torque specifications: Use the torque defined by vehicle manufacturer! The standard torque in this table can be used as long as it is within the vehicle manufacturer's specifications.





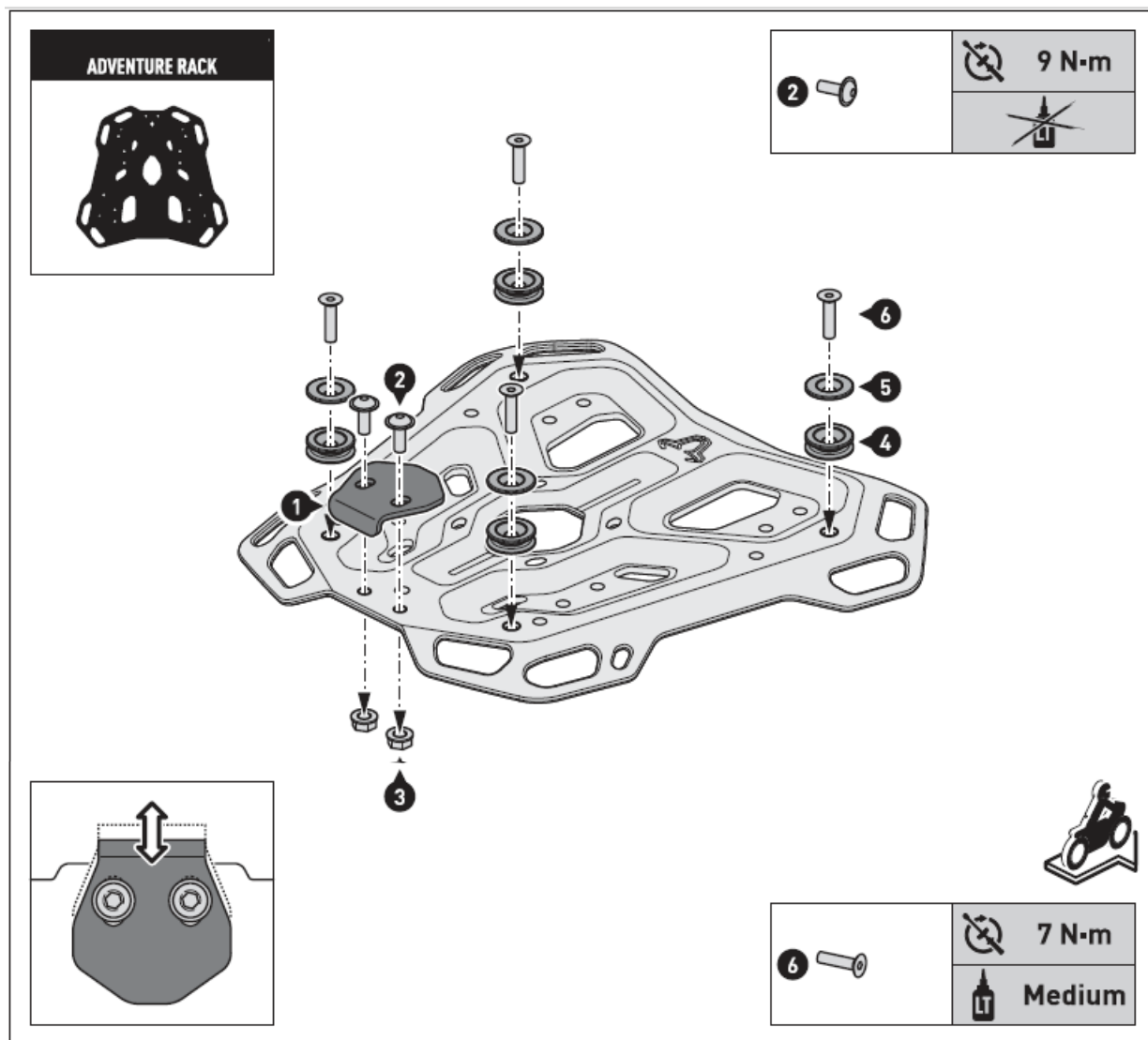
## ADVENTURE RACK

- Attach the shown parts to your ADVENTURE RACK [sold separately].

**ATTENTION:** Use liquid thread locker (screws (6) only)!

- Tighten the screws as specified in the parts list.

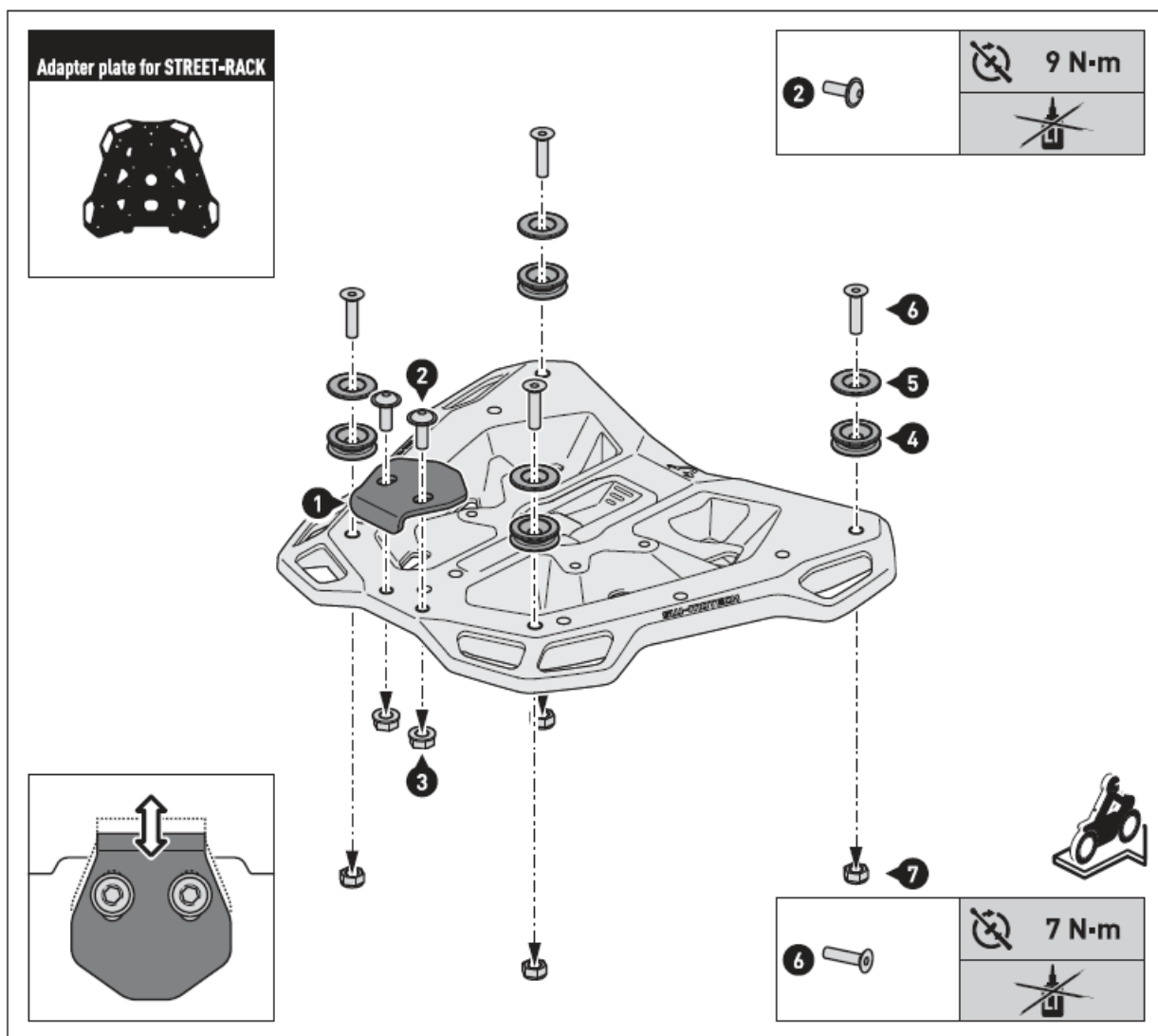
**ATTENTION:** To ensure the proper fit of your TRAX ADV/EVO/ION topcase, adjust the latch hook (1) over the elongated holes (see detail drawing)! Make sure that the topcase's latch engages properly when mounted!



## Adapter plate for STREET-RACK

- Attach the shown parts to your adapter plate for STREET-RACK [sold separately].
- Tighten the screws as specified in the parts list.

**ATTENTION:** To ensure the proper fit of your TRAX ADV/EVO/ION topcase, adjust the latch hook (1) over the elongated holes (see detail drawing)! Make sure that the topcase's latch engages properly when mounted!



- **Art.-No.** /
- **Item No.:** ALK.00.733.10000 / 11000 / 15000
- **Revision:** 04 – Datum/
- **Date:** 06 – 2024

## TRAX ADVENTURE ALU-BOX

Thank you for choosing this premium product from SW-MOTECH.

- Please visit our webshop for additional information, such as application charts and PDF mounting instructions. Any other documents that may be required (e.g. ABE certifications), are also available for download at our webshop. » [www.sw-motech.com](http://www.sw-motech.com)
- Installation and/or maintenance of this product require good technical understanding. For your own safety SW-MOTECH recommends having installation and/or servicing carried out by a specialist workshop. SW-MOTECH assumes no liability for damage caused by improper installation and/or maintenance work.
- Carefully follow all the directions given in the mounting instructions. Also pay attention to all relevant information in the vehicle manual during assembly. Nonconformance can lead to vehicle damage or even endanger the driver! Please keep the mounting instructions as reference.
- This product was developed for vehicles in their original condition. Compatibility with original accessory parts or other manufacturers accessory parts is not guaranteed. Installed accessories can change driving behaviour

and/or stability of your vehicle.

## GENERAL INFORMATION

Observe any country-specific legal or TOV regulations. If required, enter the installed parts into the vehicle documents with the appropriate inspection authority.

## SECURITY

Please pay attention to the following information concerning the TRAX ADVENTURE ALU-BOX:

The TRAX ADVENTURE ALU-BOX is designed exclusively for mounting on SW-MOTECH QUICK-LOCK side carriers, QUICK-LOCK adapter plate and STEEL-RACK adapter kit.

Modifications made to the cases will void any warranty.

- **ATTENTION:** Riding with TRAX ADVENTURE ALU-BOX may affect the motorcycle's driving and braking performance.
- **ATTENTION:** TRAX ADVENTURE ALU-BOXES M & L must be used in pairs. Make sure the weight is evenly distributed between left and right side case.
- **DANGER:** The maximum vehicle load defined by the vehicle manufacturer may NOT be exceeded. The maximum permissible load of the SW-MOTECH luggage rack/side carrier may NOT be exceeded; make sure to take into account the dead weight of the product.
- **ATTENTION:** Maximum load: Please refer to the mounting instructions of the SW-MOTECH luggage rack/side carrier. Maximum speed with mounted cases: 130 km/h (80 mph).
- **ATTENTION:** Make sure that the TRAX ADVENTURE ALU-BOX is properly attached to the particular adapter and fully engaged to all four mounting points! ALL latches of the TRAX ADVENTURE ALU-BOX must be locked BEFORE riding with the TraX ® EVO / TRAX ADV lock cylinder set (sold separately) and remain closed while riding. Improperly mounted cases run the risk of detaching during transport.

## CARE

To clean the TRAX ADVENTURE ALU-BOX, use warm, soapy water and a soft, clean cloth. Rinse with clean water. Do NOT use strong cleaning agents, rough cleaning tools or high pressure washer!

## PARTS LIST

| Part                         | Anzahl *<br>Quantity * | N-m |
|------------------------------|------------------------|-----|
| TRAX ADV ALU-BOX             | 1 / 1                  |     |
|                              |                        |     |
| Snap-Fit                     | 2 / 2                  |     |
| Lid Limiter                  | 2 / 2                  |     |
| Swivel Part                  | 2 / 2                  |     |
| Lenshead Screw, self-tapping | 4 / 4                  | 0,5 |

- All measurements in millimeters.
- The second number indicates the total quantity of the listed part in the delivery.

**6**

**1**

**2**

**7**

**3**

**5**

**4**

**5**

**6**

**7**

| TECHNICAL DETAILS |             |                                  |  |
|-------------------|-------------|----------------------------------|--|
| <p><b>L</b></p>   | <p>Size</p> | <p>Volume</p> <p><b>45 l</b></p> | <p>Empty weight</p> <p><b>5,4 kg</b></p> |
|                   |             |                                  |  |
| <p><b>M</b></p>   | <p>Size</p> | <p>Volume</p> <p><b>37 l</b></p> | <p>Empty weight</p> <p><b>5,1 kg</b></p> |
|                   |             |                                  |  |
| <p><b>TC</b></p>  | <p>Size</p> | <p>Volume</p> <p><b>38 l</b></p> | <p>Empty weight</p> <p><b>4,6 kg</b></p> |
|                   |             |                                  | <p>Capacity</p> <p><b>1x</b></p>         |

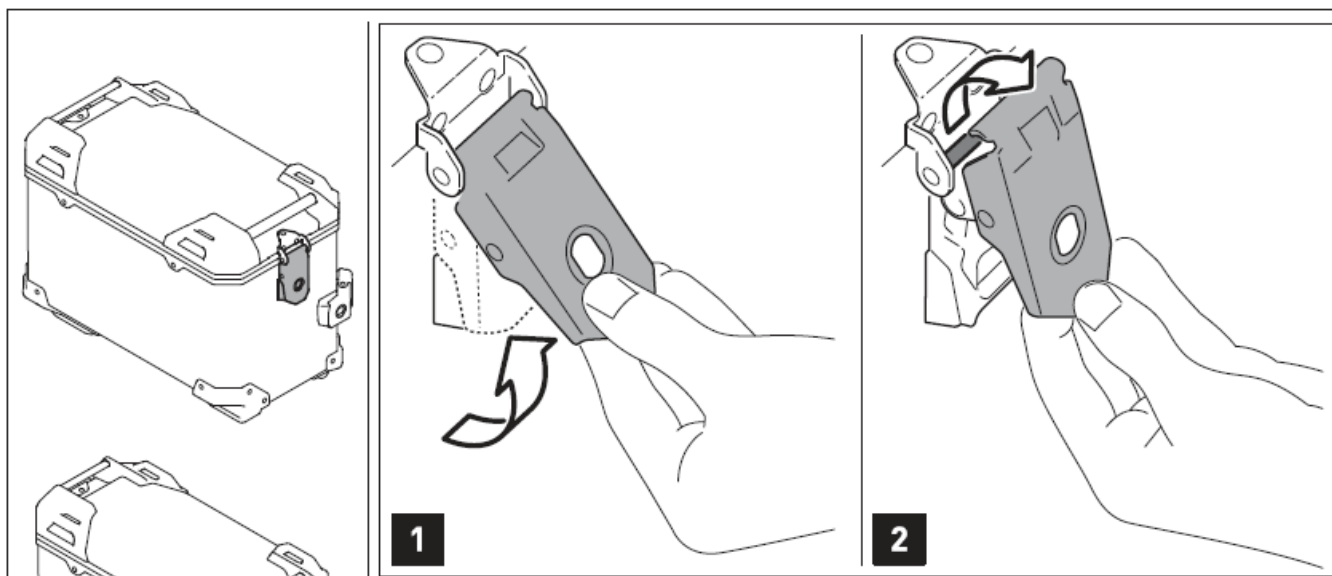
Please visit our webshop for application charts and compatible accessories.

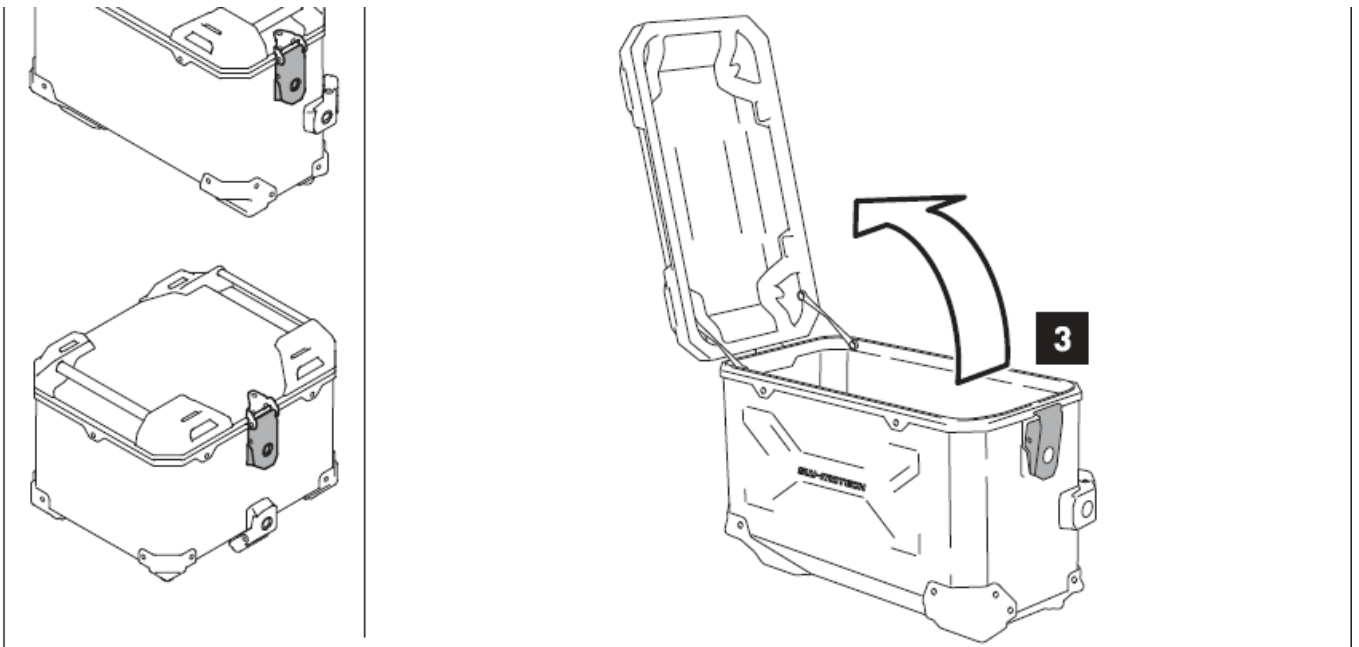
[www.sw-motech.com](http://www.sw-motech.com)

## LID AND LOCK CYLINDER SET

**Open the lid** (TRAX ADV M / L / topcase)

1. Pull the latch of the lid upwards
2. and remove it from the latch bar.
3. Open the lid.





**Insertion of the Trax® EVO / TRAX ADV lock cylinder set \***  
(TRAX ADV M / L / Topcase)

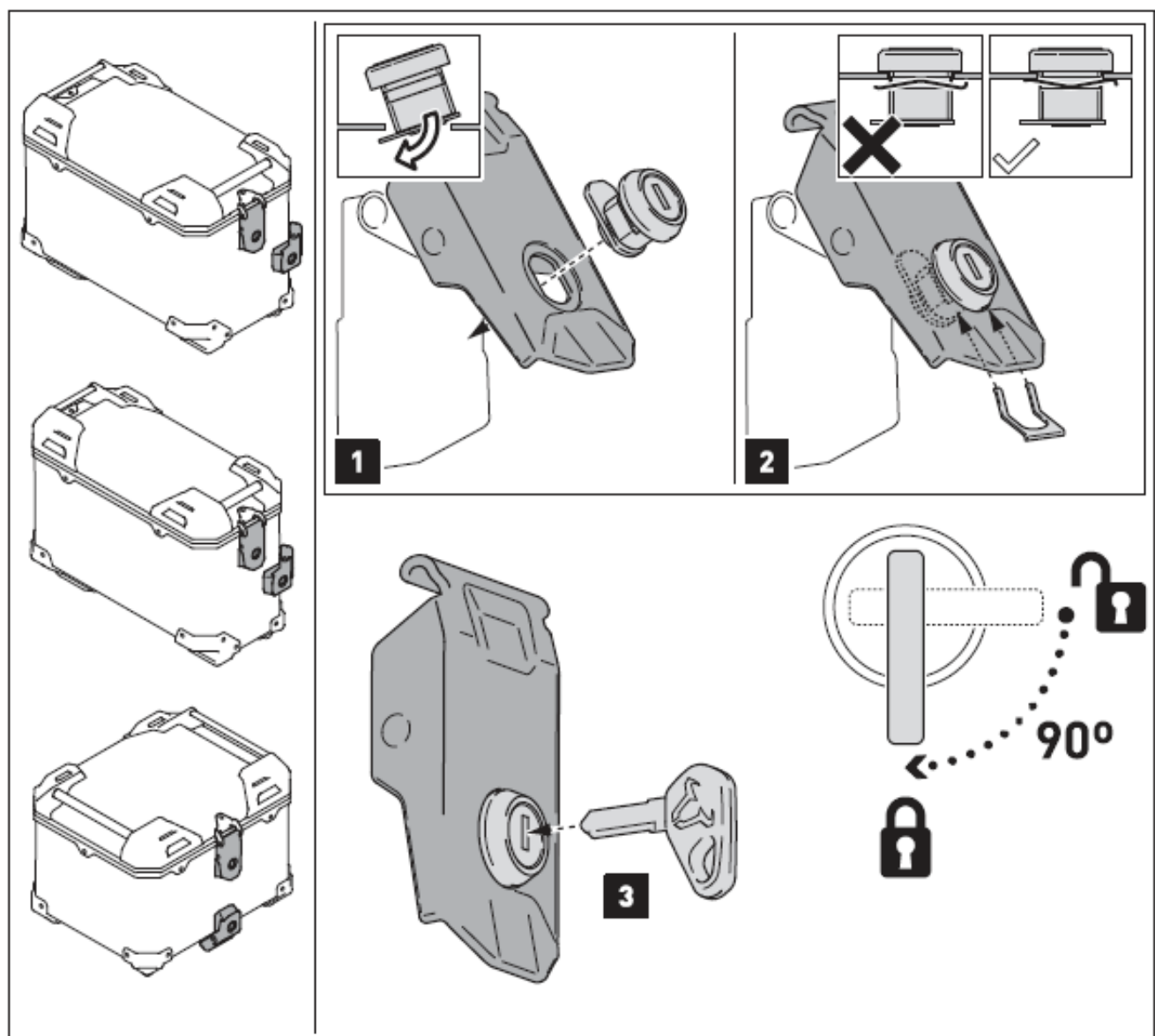
1. Insert the lock cylinders into the latches .
2. Secure the lock cylinders with the clamping plates .

**ATTENTION:** Pay attention to the correct alignment of the clamping plates (as shown in the detail drawings).

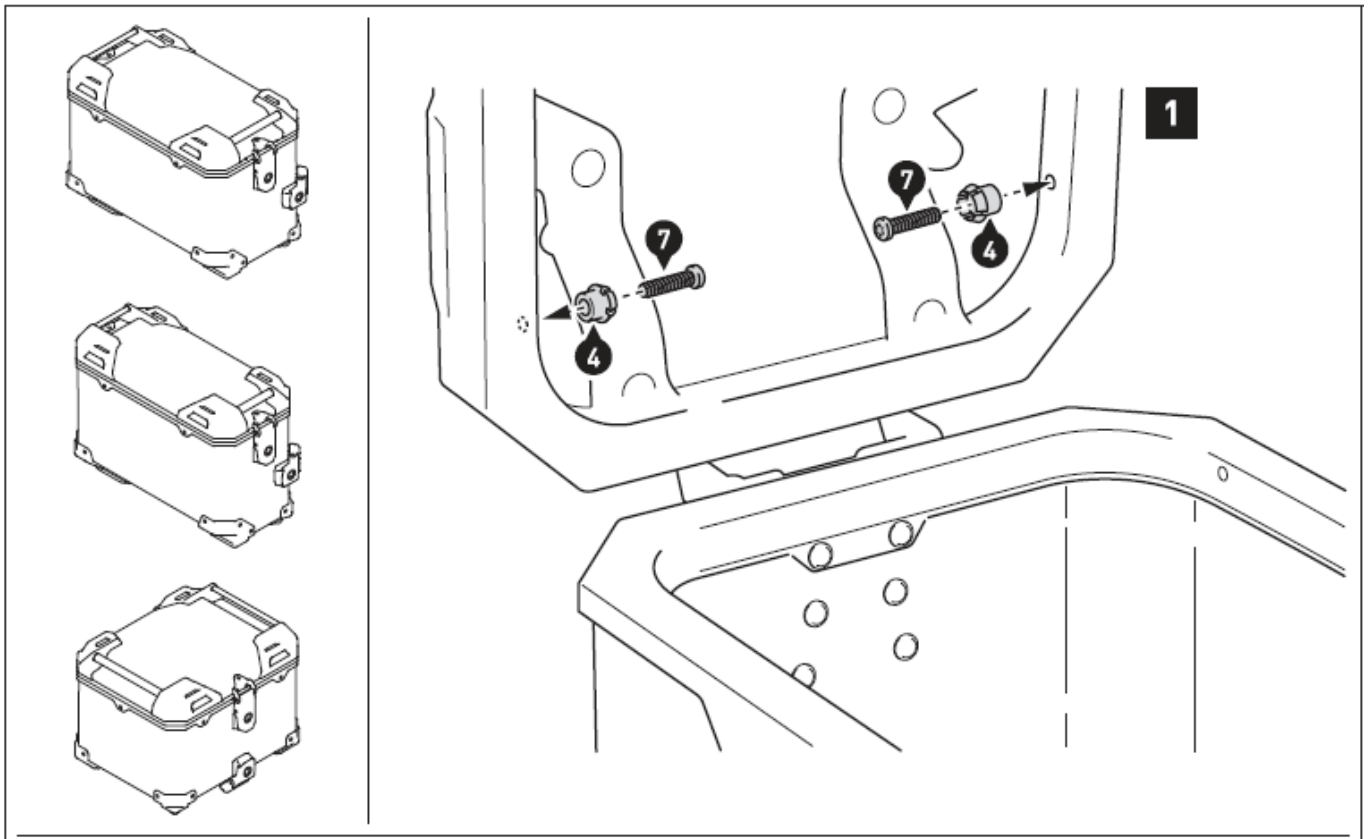
3. Insert the keys into the lock cylinders; open or close the lock cylinder as shown in the schematic drawing.

**ATTENTION:** Use for lubrication graphite powder ONLY!

Sold separately .

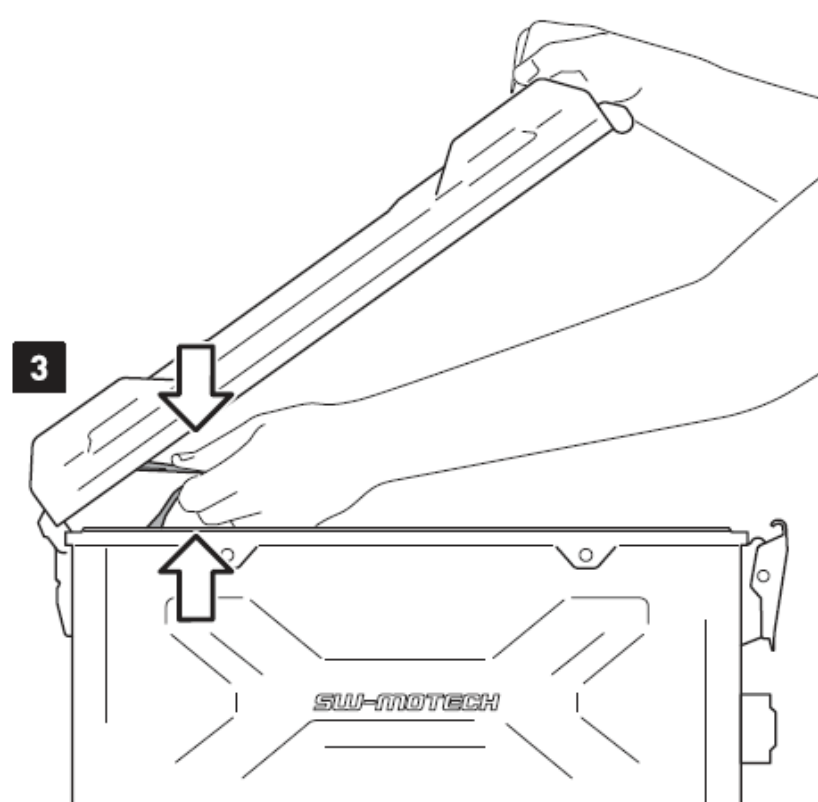
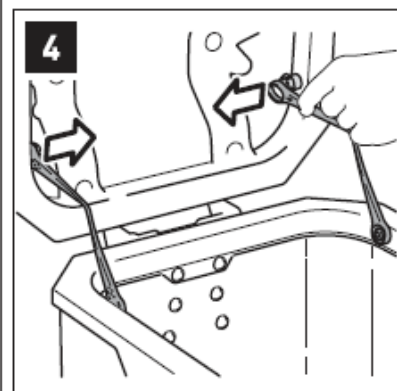
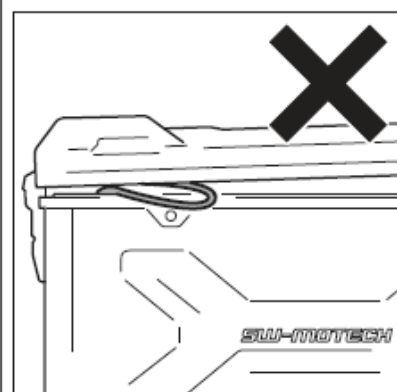
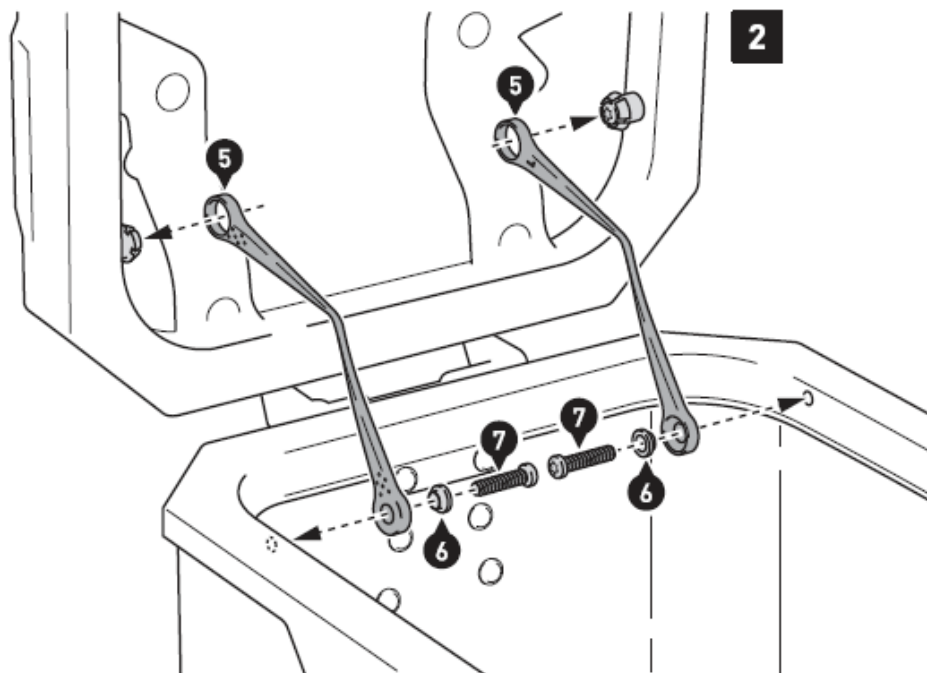
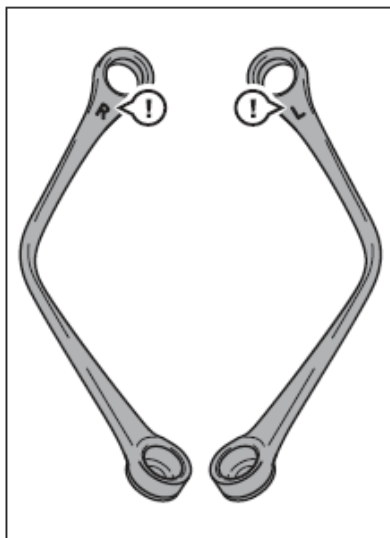


**LID LIMITER**



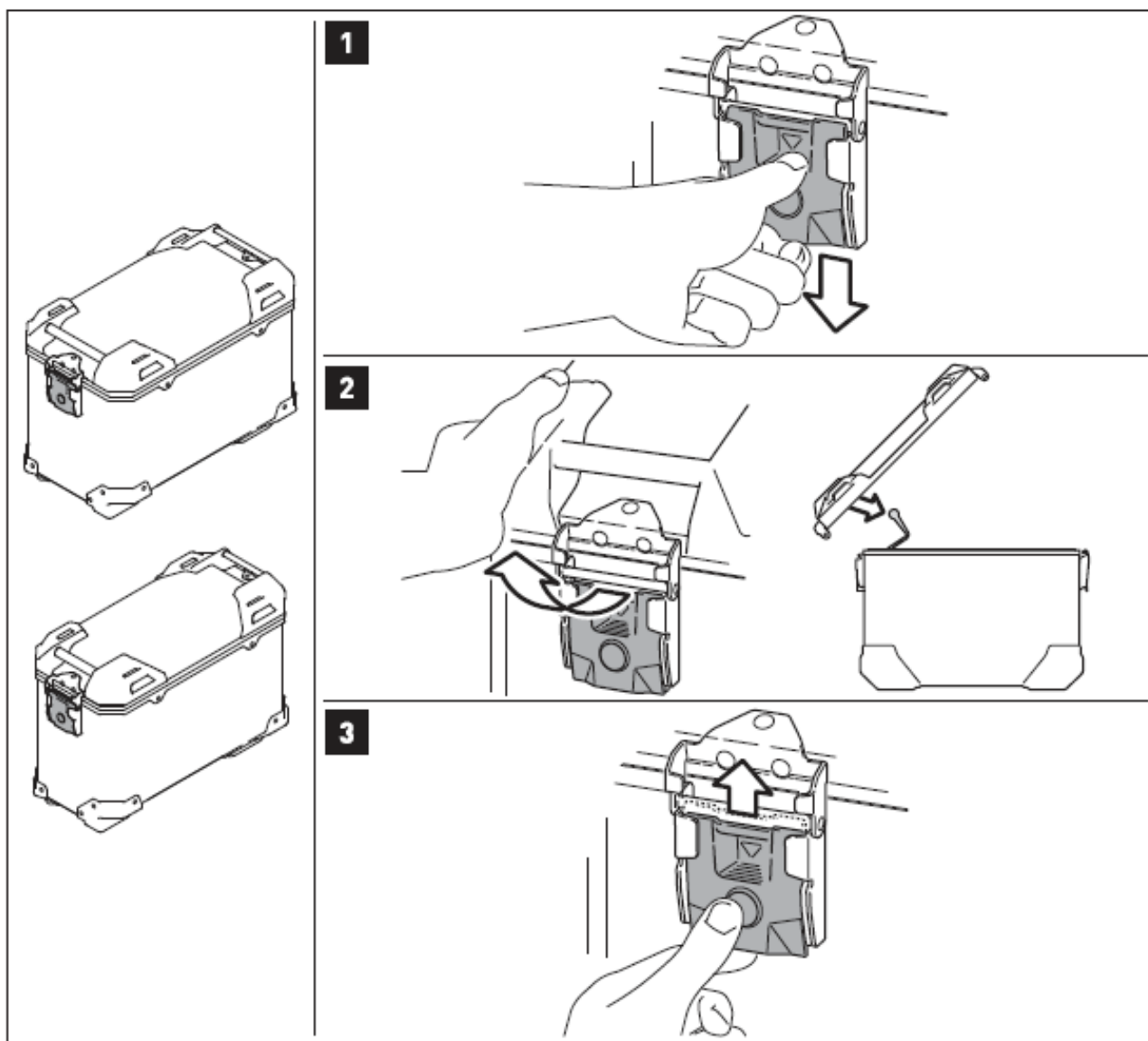
#### Mounting the lid limiters [TRAX ADV M / L / top case)

1. Open the lid. Attach the snap-fit (4) with the shown parts at the lid frame.  
Tighten the screws as specified in the parts list.
2. Attach the lid limiters (5) with the shown parts at the case frame.  
**NOTE:** Pay attention to left-right specifications for the limiters (in driving direction).  
Tighten the screws as specified in the parts list.  
Press the lid limiters onto the snap-fits.
3. Before closing the lid for the first time, the lid limiters must be compressed as shown in the drawing.  
While closing the lid, make sure that the lid limiters are not pinched between lid and case.
4. To remove the lid from the case (as shown on page 51, remove the lid limiters from the snap-fits first.



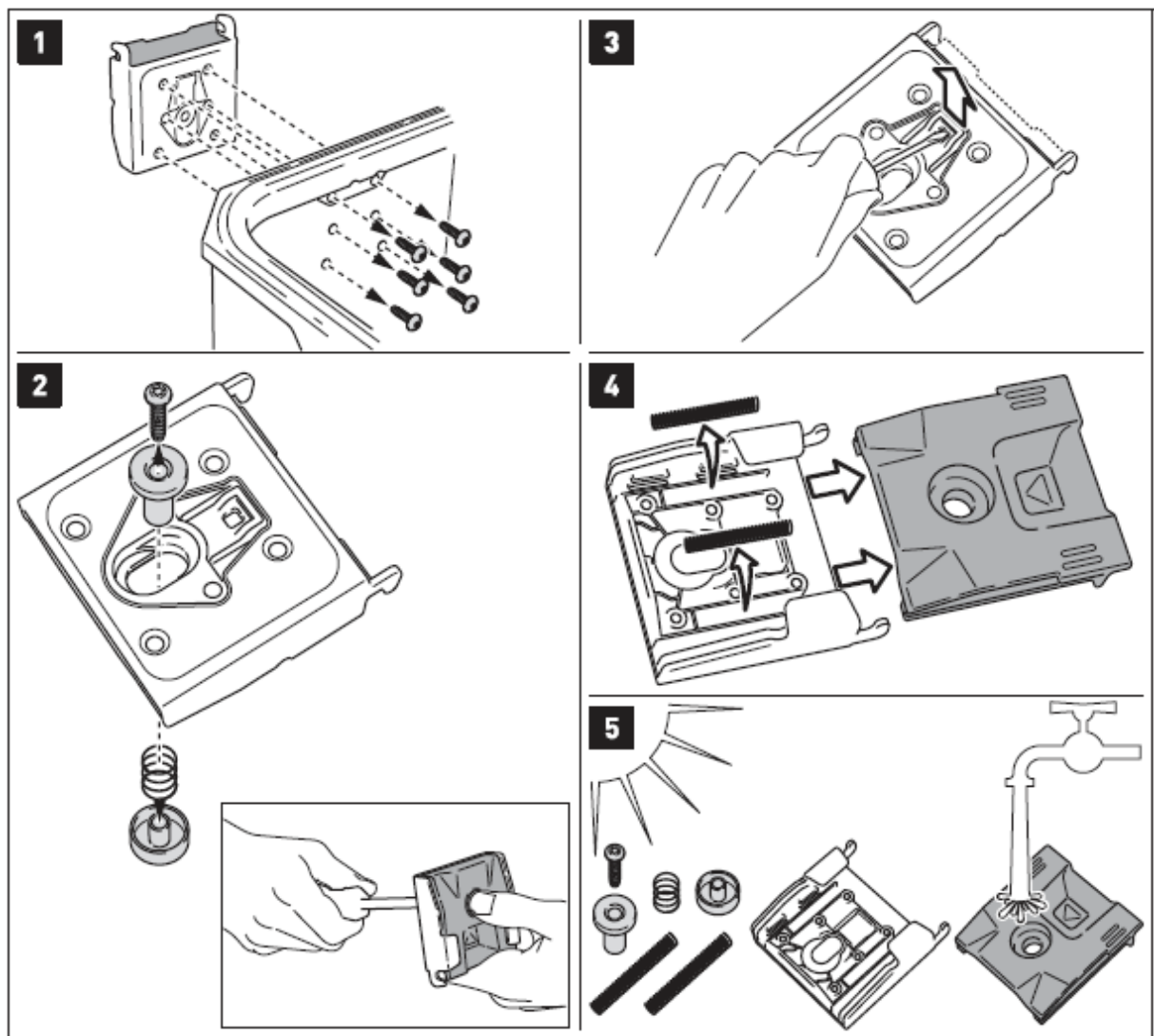
**QUICK RELEASE FASTENER**





### Removing the lid (TRAX ADVENTURE M / LI)

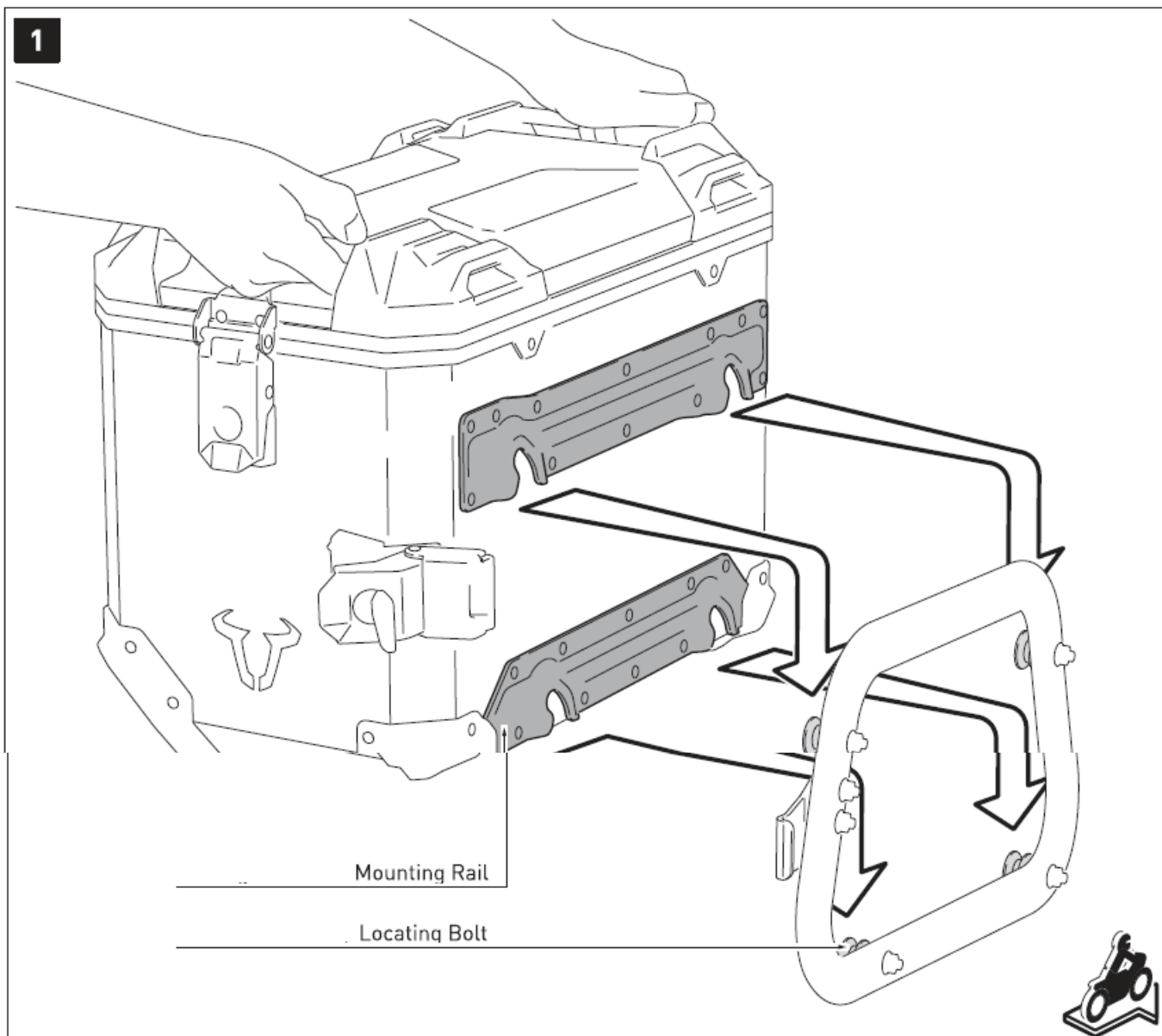
1. Press the quick release fastener down until it clicks into place and the button pops out.
2. Then remove the lid from the case.  
**NOTE:** If you have installed the lid limiters (5), they must be detached before removing the lid (as shown on page 4).
3. Press the button of the quick release fastener to lock the replaced lid in place. Make sure that the quick release fastener snaps above.



## Maintenance and cleaning of the quick release fastener

(TRAX ADVENTURE M / LI)

1. Loosen the six screws on the inner side of the case and remove the quick release fastener.
2. Loosen the screw of the button (fix with thumb and index finger).
3. Loosen the shown clip carefully and ...
4. remove the quick release fastener and springs from the mounting plate.
5. Clean the components with clean water and let it air dry. Reattach all parts in reversed order



### Attachment of TRAX ADVENTURE ALU-BOX M & L

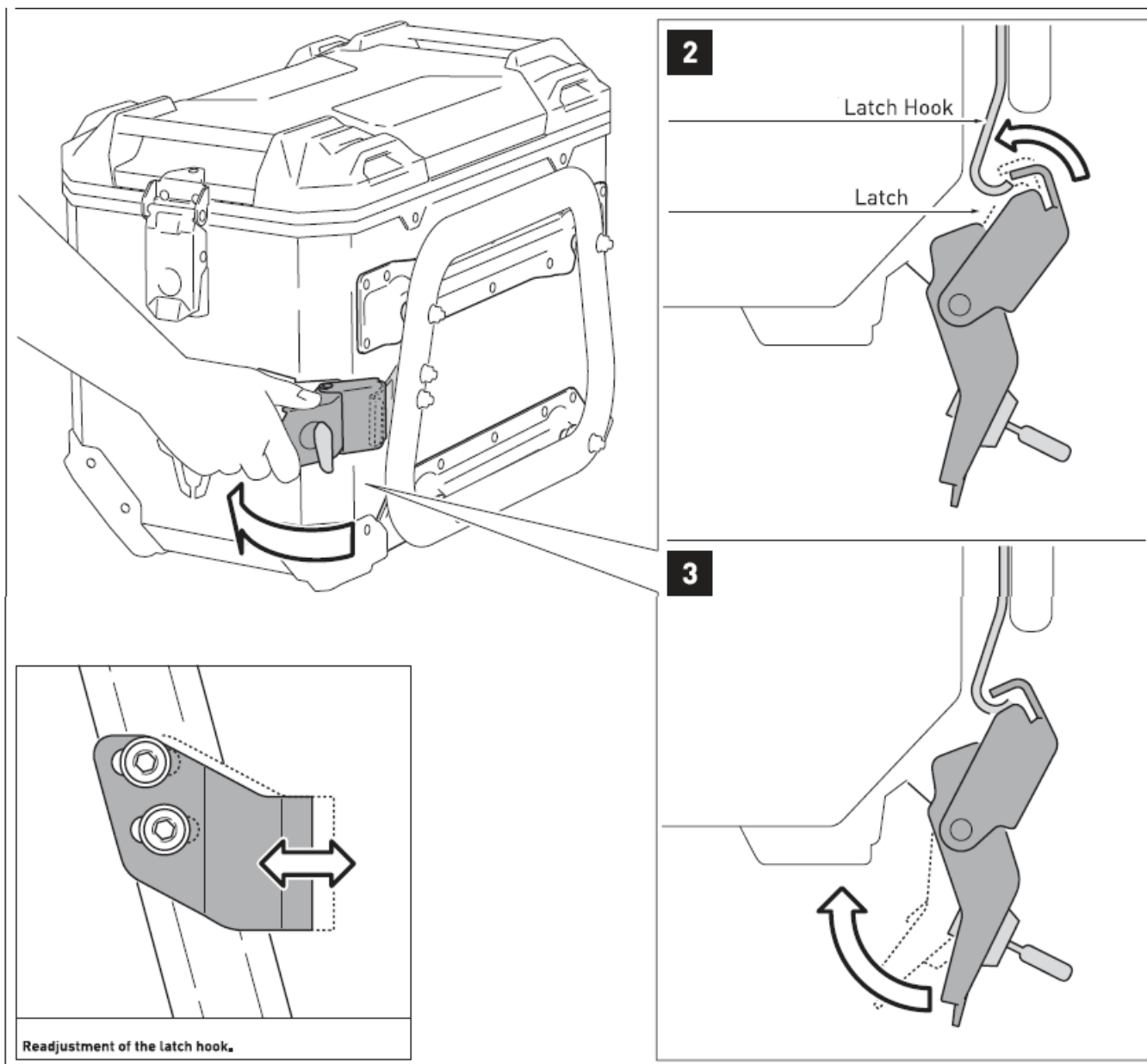
1. Lead the four openings of the mounting rails onto the locating bolts of the mounted QUICK-LOCK adapter kit. Then press the TRAX ADVENTURE ALU-BOX slightly downward, until it properly rests on QUICK-LOCK side carrier.

**ATTENTION:** Make sure that all four locating bolts rests on at the same time.

2. Place the latch over the latch hook and ...
3. close the latch; check the proper fit of the TRAX ADVENTURE ALU-BOX on the QUICK-LOCK side carrier.

**ATTENTION:** Make sure the closed latch is under sufficient tension! If not the latch hook must be readjusted!

**ATTENTION:** Secure the TRAX ADVENTURE ALU-BOX with the separately available Trax® EVO / TRAX ADVENTURE lock cylinder set at the QUICK-LOCK side carrier before riding!



## Attachment of TRAX ADVENTURE ALU-BOX M & L

1. Lead the four openings of the mounting rail onto the locating bolts of the mounted QUICK-LOCK adapter plate/ STEEL-RACK adapter kit.

Then press the TRAX ADVENTURE ALU-BOX slightly forward, until it properly rests on QUICK-LOCK adapter plate/ STEEL-RACK adapter kit.

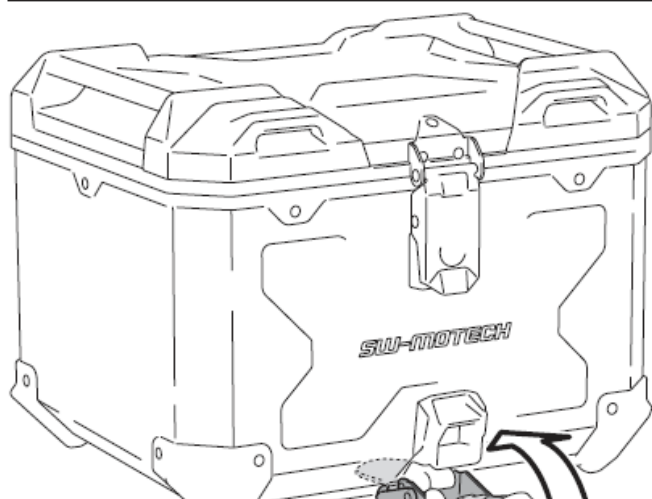
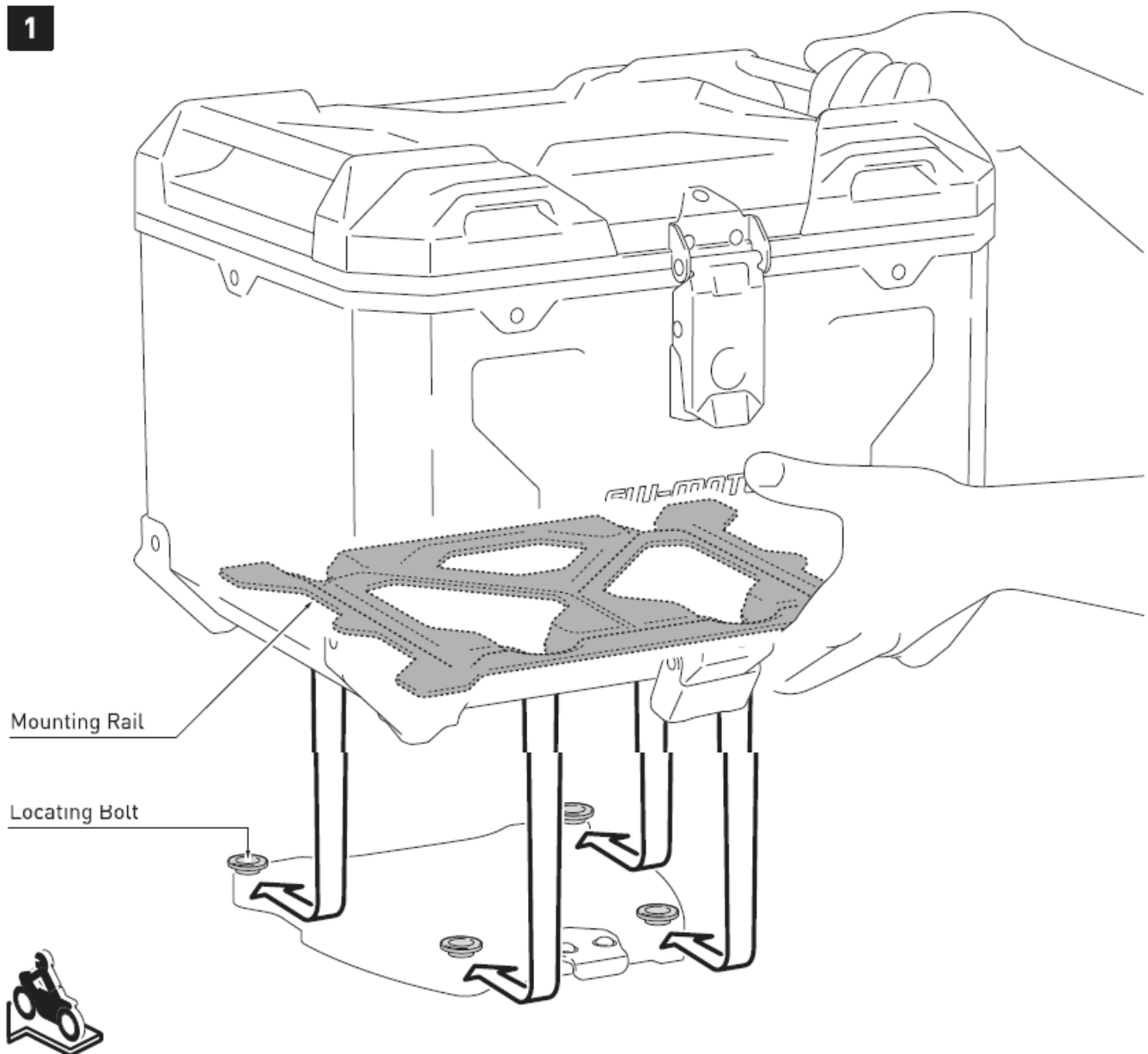
**ATTENTION:** Make sure that all four locating bolts rests on at the same time.

2. Place the latch over the latch hook and ...
3. close the latch; check the proper fit of the TRAX ADVENTURE ALU-BOX on the QUICK-LOCK Adapter Plate/ STEEL-RACK Adapter Kit.

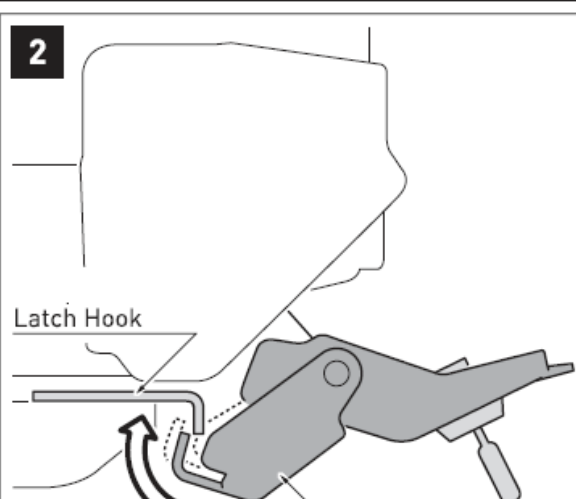
**ATTENTION:** Make sure the closed latch is under sufficient tension! If not the latch hook must be readjusted!

**ATTENTION:** Secure the TRAX ADVENTURE ALU-BOX with the separately available Trax® EVO / TRAX ADVENTURE lock cylinder set at the QUICK-LOCK adapter plate/ STEEL-RACK adapter kit before riding!

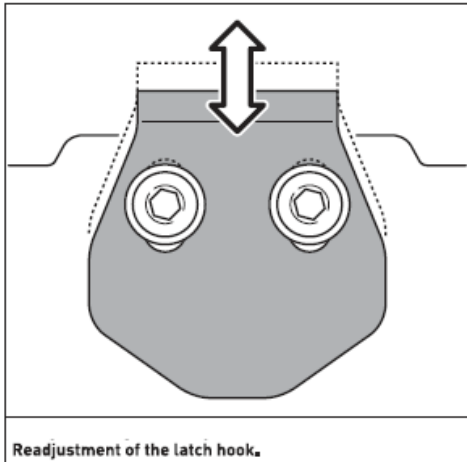
1



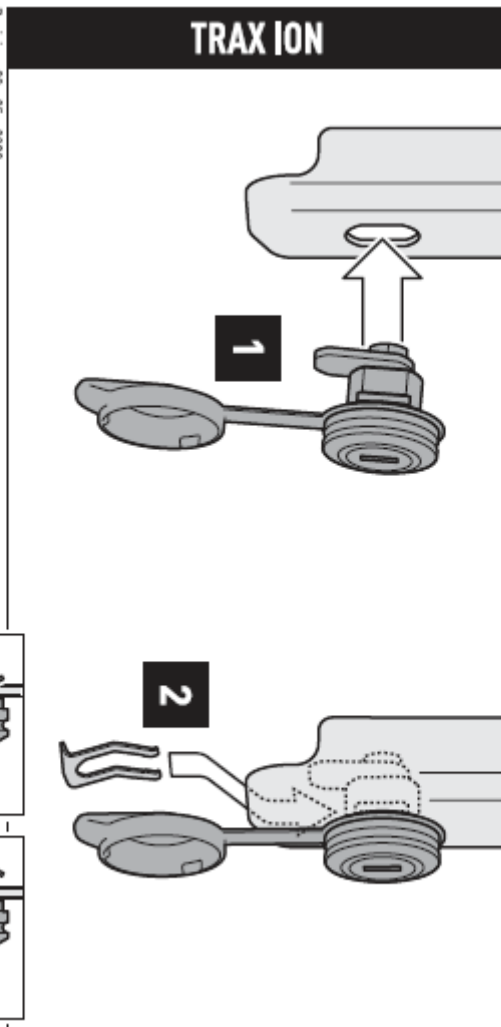
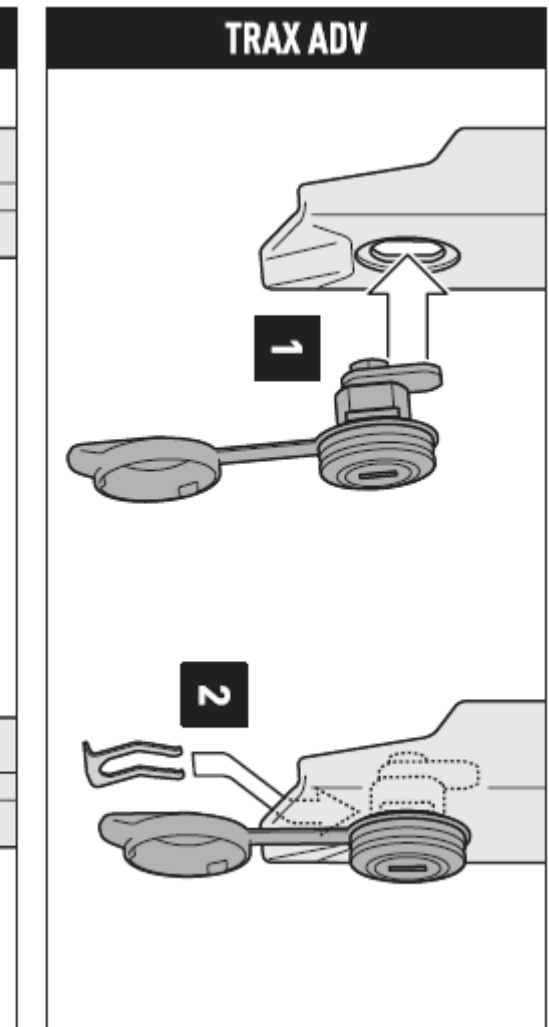
2



3



Readjustment of the latch hook.



Revision: 00 - 05 - 2020

