

 **SW-MOTECH®**  
GPT.06.921.60000-B Case  
System Yamaha Tracer



# SW-MOTECH GPT.06.921.60000-B Case System Yamaha Tracer Instruction Manual

[Home](#) » [SW-MOTECH](#) » SW-MOTECH GPT.06.921.60000-B Case System Yamaha Tracer Instruction Manual 

## Contents

- 1 SW-MOTECH GPT.06.921.60000-B Case System Yamaha Tracer
- 2 Product Information
- 3 Product Usage Instructions
- 4 FAQ (Frequently Asked Questions)
- 5 ADVENTURE-RACK
- 6 Adapter kit for ADVENTURE-RACK – Adapter plate for STREET-RACK
  - 6.1 MOUNTING
- 7 URBAN ABS top case
- 8 ABOUT COMPANY
- 9 Documents / Resources
  - 9.1 References
- 10 Related Posts



**SW-MOTECH GPT.06.921.60000-B Case System Yamaha Tracer**



## Product Information

### Specifications:

- **Model Numbers:** GPT.06.921.60000/B, GPT.06.921.19000/B, GPT.00.152.35000/B, BC.HTA.00.677.20000/B
- **Product Type:** ANBAUANLEITUNG

## Product Usage Instructions

### Installation:

1. Identify the appropriate model number from the list provided.
2. Ensure you have all necessary tools and equipment for installation.
3. Follow the detailed installation steps outlined in the user manual for your specific model.

### Maintenance:

Regularly check for any signs of wear and tear. Clean the product using a damp cloth and mild detergent if necessary. Avoid using harsh chemicals that may damage the product.

### Troubleshooting:

If you encounter any issues with the product, refer to the troubleshooting section of the user manual for solutions. If problems persist, contact customer support for assistance.

## FAQ (Frequently Asked Questions)

- **How do I find the model number of my product?**

The model number is typically located on a sticker or plate attached to the product itself. It may also be found in the user manual or packaging.

- **Can I use the product outdoors?**

This product is designed for indoor use only. Using it outdoors may damage the product and void any warranties.

- **What should I do if the product stops working suddenly?**

Check the power source and connections first. If the issue persists, refer to the troubleshooting guide in the user manual or contact customer support for further assistance.

## ADVENTURE-RACK

### INTRODUCTION

- Thank you for choosing this premium product from SW-MOTECH. Please visit our webshop for additional information, such as application charts and PDF mounting instructions. Any other documents that may be required (e.g. ABE certifications), are also available for download at our webshop.
- Installation and/or maintenance of this product require good technical understanding! For your own safety SW-MOTECH recommends having installation and/or servicing carried out by a specialist workshop! SW-MOTECH assumes no liability for damage caused by improper installation and/or maintenance work!
- Carefully follow all the directions given in the mounting instructions and pay attention to all relevant information in the vehicle manual during assembly. Nonconformance can lead to vehicle damage or even endanger the driver!
- These mounting instructions are written based on our current state of knowledge. Legal requirements for accuracy do not exist.
- This product was developed for vehicles in their factory setting. Compatibility with original accessory parts or other manufacturers' accessory parts is not guaranteed. Furthermore, BEFORE installing this product, make sure that all moving parts (e.g. the chain) are in the original state of maintenance. Installed accessories can change the driving behaviour and/or stability of your vehicle.

### GENERAL INFORMATION

Observe the country-specific regulations concerning vehicle registration/ operation as well as TOV regulations if applicable. If required, register installed parts in the vehicle documents through an appropriate inspection authority.

- **PREPARATION:** Read the mounting instructions carefully and make sure that all items of the parts list are included. Make sure that your vehicle is parked safely and cannot fall over. Turn off the engine and remove the ignition key. Let the motor/exhaust cool off if necessary. Disconnect the vehicle battery when working on the electrical system. Use appropriate tools. Have another person to help you.
- **MOUNTING:** All parts and connections removed from the vehicle must be reinstalled in accordance with the vehicle manufacturers' specifications or replaced by parts delivered by SW-MOTECH. Secure all threads, unless otherwise specified, with medium-strength liquid thread locker.  
Torque specifications undefined by SW-MOTECH must be obtained from the vehicle manufacturer or by a specialist workshop!
- **FUNCTION CHECK:** After installation make sure that all parts and connections previously removed are properly replaced. Also make sure that no moving parts are obstructed and no function of the vehicle is hindered in any way. Cables and hoses must not rub and/or be pinched. Before starting to ride, perform a comprehensive check of all functions. After the first 50 km and then at regular intervals, check the tightening torque of all screw connections and the proper fit of the product.

### PRODUCT SPECIFIC INFORMATION

Maximum Load	Maximum Speed
 <b>10 KG (22 lbs)</b>	 <b>130 km/h (80 mph)</b>

- **ATTENTION:** The indicated maximum load is inclusive the weight of topcase/luggage and adapter kit! The maximum vehicle load specified by the manufacturer must not be exceeded!
- **ATTENTION:** Can only be mounted in combination with the original luggage grid!

## PARTS LIST



Schritt Step	Nr. No.	Art.-Nr. / Bezeichnung <sup>a</sup> Item No. / Description <sup>a</sup>	Artikel	Part	Anzahl <sup>b</sup> Quantity <sup>b</sup>	N·m <sup>c</sup>																																														
1	(1)	GPT.06.921.001	Anbaublech; oben	Mounting Bracket; top	1 / 1																																															
	(2)	M8 x 45; DIN 7991	Senkkopfschraube; schwarz	Countersunk Screw; black	2 / 2	20																																														
	(3)	Ø 25 / ø 8,4 / h 5	Distanzbuchse; schwarz	Spacer; black	3 / 3																																															
	(4)	M8; DIN 6927	Mutter, selbstsichernd; schwarz	Lock Nut; black	2 / 2																																															
	(5)	GPT.06.921.002	Anbaublech; unten	Mounting Bracket; bottom	1 / 1																																															
	(6)	M8 x 40; DIN 7991	Senkkopfschraube; schwarz	Countersunk Screw; black	1 / 1	20																																														
2	(7)	M6 x 16; DIN 7991	Senkkopfschraube; schwarz	Countersunk Screw; black	2 / 2	8																																														
	(8)	GPT.00.152.002	Gepäckträger	Luggage Rack	1 / 1																																															
	(9)	M6 x 16; ISO 7380	Linsenkopfschraube; schwarz	Lenshead Screw; black	4 / 4	8																																														
	(10)	ø 6,4; DIN 522	Unterlegscheibe; schwarz	Washer; black	4 / 4																																															
<table><tr><td rowspan="2">8.8</td><td colspan="7">Regelgewinde / Coarse Thread Ø</td><td rowspan="2">10.9</td><td colspan="7">Regelgewinde / Coarse Thread Ø</td></tr><tr><td>M4</td><td>M5</td><td>M6</td><td>M8</td><td>M10</td><td>M12</td><td>M4</td><td>M5</td><td>M6</td><td>M8</td><td>M10</td><td>M12</td></tr><tr><td></td><td>Stahl FK 8.8 / Steel CL 8.8</td><td>N·m</td><td>2,8</td><td>5,5</td><td>9,6</td><td>23</td><td>46</td><td>79</td><td></td><td>Stahl FK 10.9 / Steel CL 10.9</td><td>N·m</td><td>4,1</td><td>8,1</td><td>14</td><td>34</td><td>67</td><td>115</td></tr></table>							8.8	Regelgewinde / Coarse Thread Ø							10.9	Regelgewinde / Coarse Thread Ø							M4	M5	M6	M8	M10	M12	M4	M5	M6	M8	M10	M12		Stahl FK 8.8 / Steel CL 8.8	N·m	2,8	5,5	9,6	23	46	79		Stahl FK 10.9 / Steel CL 10.9	N·m	4,1	8,1	14	34	67	115
8.8	Regelgewinde / Coarse Thread Ø							10.9	Regelgewinde / Coarse Thread Ø																																											
	M4	M5	M6	M8	M10	M12	M4		M5	M6	M8	M10	M12																																							
	Stahl FK 8.8 / Steel CL 8.8	N·m	2,8	5,5	9,6	23	46	79		Stahl FK 10.9 / Steel CL 10.9	N·m	4,1	8,1	14	34	67	115																																			

Anmerkungen: <sup>a</sup> Alle Maßangaben in Millimeter. <sup>b</sup> Der zweite Wert gibt die Gesamtanzahl des jew. Artikels in der Lieferung an. <sup>c</sup> **Keine Anzugsmomentvorgabe: Verwenden Sie das vom Fzg.-Hersteller definierte Anzugsmoment!** Das Std.-Anzugsmoment der Tabelle kann verwendet werden, wenn es den Fzg.-Hersteller-Vorgaben entspricht.

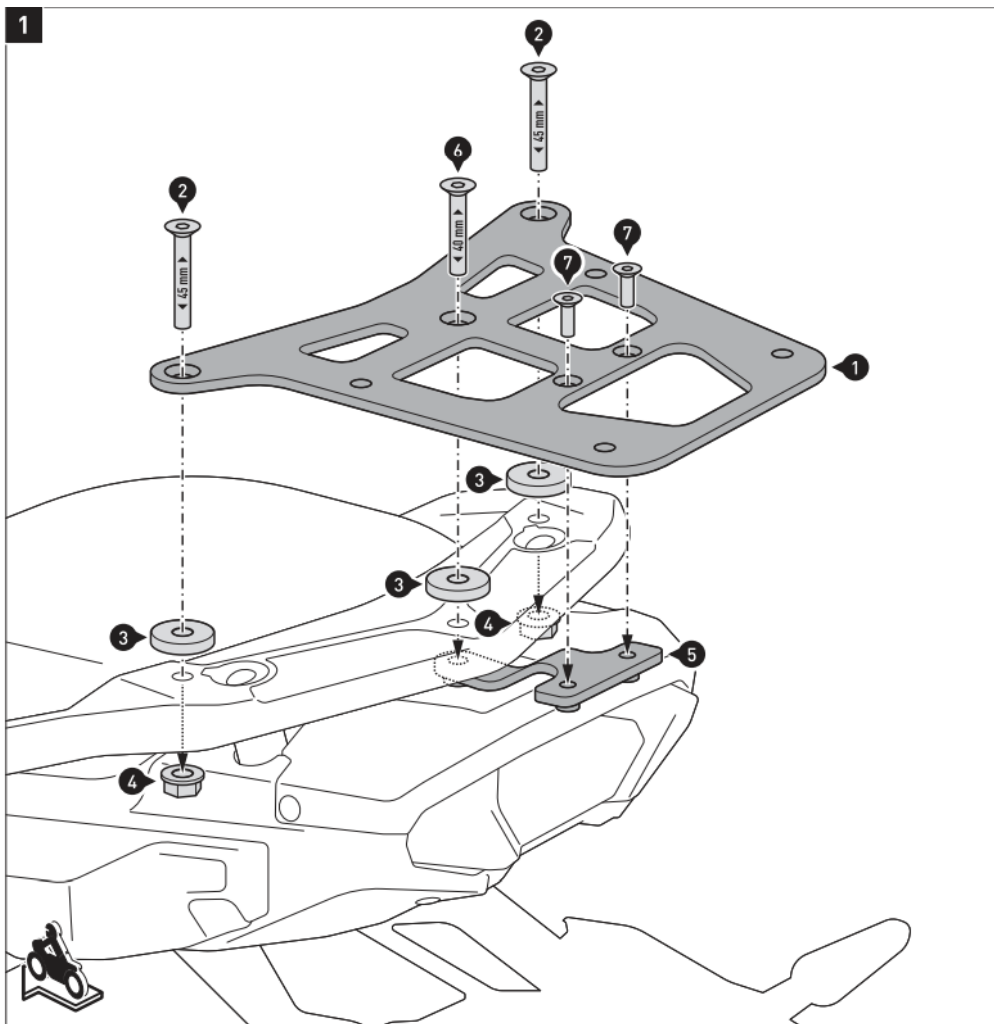
Note: <sup>a</sup> All measurements in millimeters. <sup>b</sup> The second number indicates the total quantity of the part in the delivery. <sup>c</sup> **No torque specifications: Use the torque defined by vehicle manufacturer!** The standard torque in this table can be used as long as it is within the vehicle manufacturer's specifications.

## MOUNTING

1. Attach the mounting bracket [1 I to the luggage rack, as shown in the drawing.

**ATTENTION:** Use liquid thread locker!

Tighten the screws as specified.

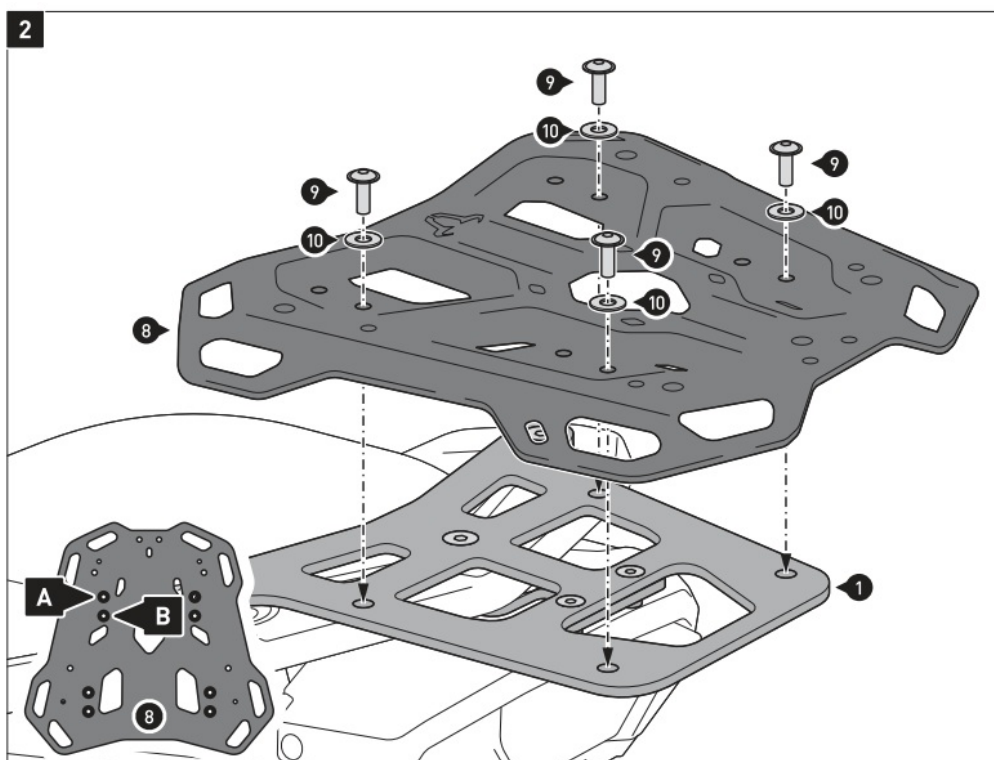


2. **NOTE:** Depending on the available space, attach the luggage rack to the marked mounting position (AJ or (BJ, as shown in the detail drawing.

Attach the luggage rack [B] to the mounting bracket [11], as shown in the drawing.

**ATTENTION:** Use liquid thread locker!

Tighten the screws as specified.



# Adapter kit for ADVENTURE-RACK – Adapter plate for STREET-RACK

## INTRODUCTION

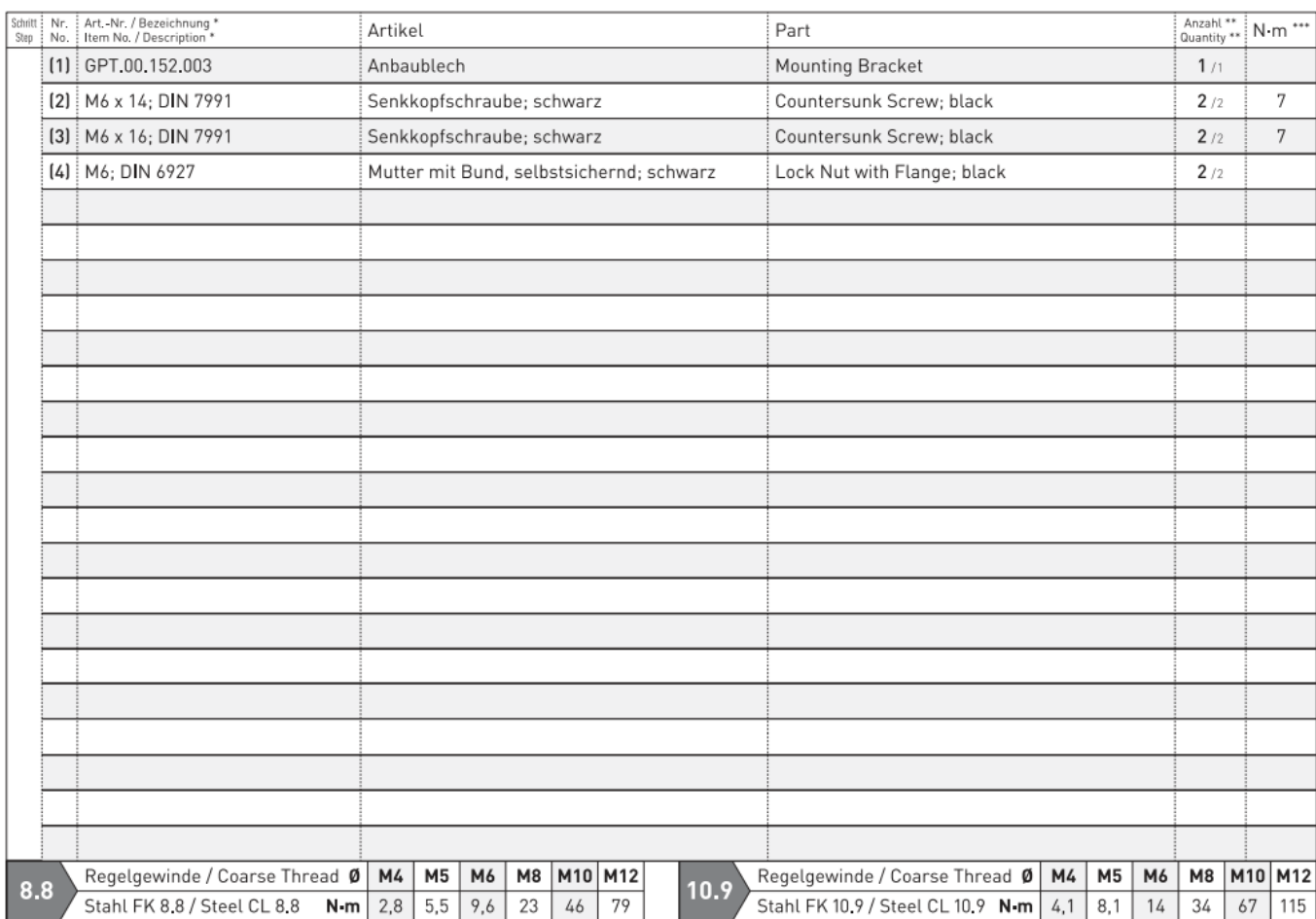
- Thank you for choosing this premium product from SW-MOTECH. Please visit our web shop for additional information, such as application charts and PDF mounting instructions. Any other documents that may be required (e.g. ABE certifications), are also available for download at our web shop.
- Installation and/or maintenance of this product require good technical understanding! For your own safety SW-MOTECH recommends having installation and/or servicing carried out by a specialist workshop! SW-MOTECH assumes no liability for damage caused by improper installation and/or maintenance work!
- Carefully follow all the directions given in the mounting instructions and pay attention to all relevant information in the vehicle manual during assembly. Nonconformance can lead to vehicle damage or even endanger the driver!
- These mounting instructions are written based on our current state of knowledge. Legal requirements for accuracy do not exist.
- This product was developed for vehicles in their factory setting. Compatibility with original accessory parts or other manufacturers' accessory parts is not guaranteed. Furthermore, BEFORE installing this product, make sure that all moving parts (e.g. the chain) are in the original state of maintenance. Installed accessories can change the driving behaviour and/or stability of your vehicle.

## GENERAL INFORMATION

Observe the country-specific regulations concerning vehicle registration/ operation as well as TUV regulations if applicable. If required, register installed parts in the vehicle documents through an appropriate inspection authority.

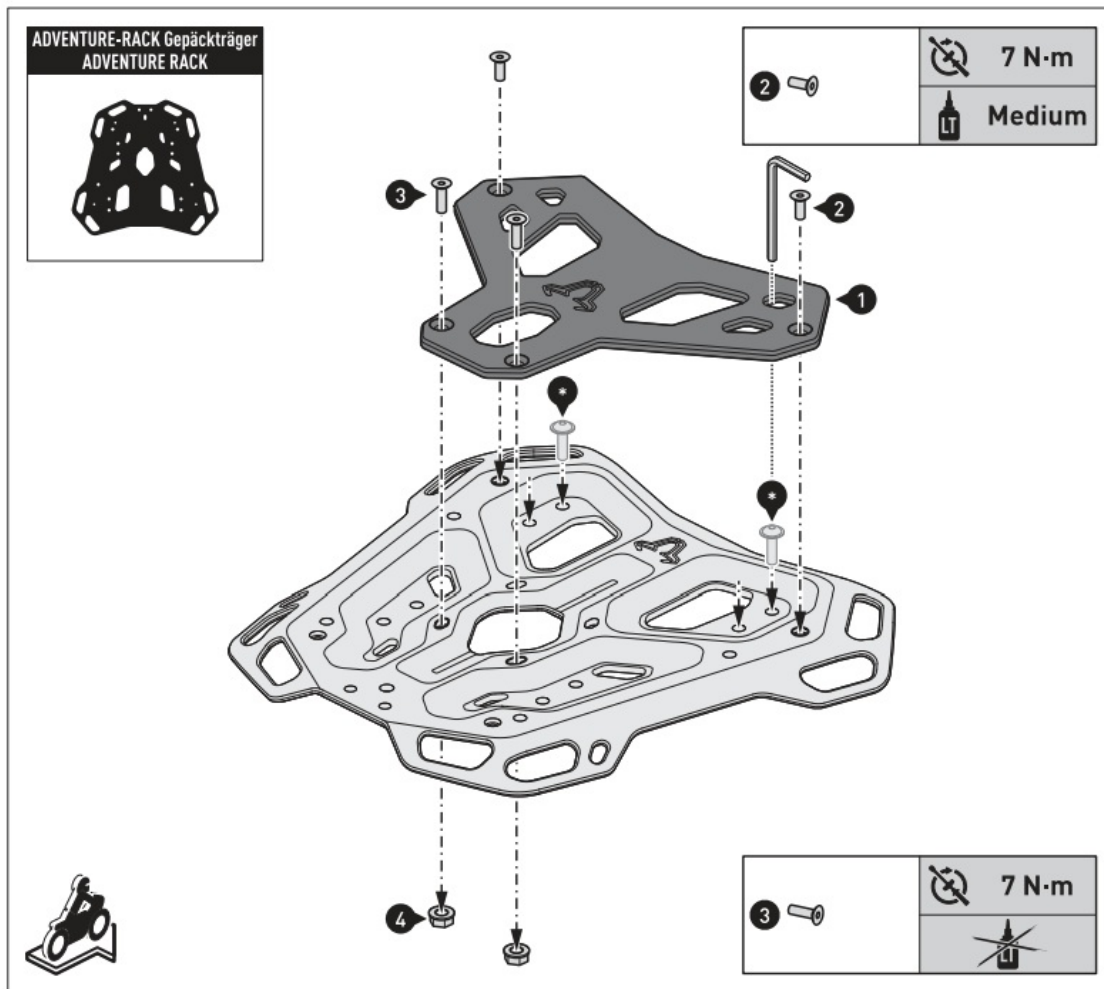
- **PREPARATION:** Read the mounting instructions carefully and make sure that all items of the parts list are included. Make sure that your vehicle is parked safely and cannot fall over. Turn off the engine and remove the ignition key. Let the motor/exhaust cool off if necessary. Disconnect the vehicle battery when working on the electrical system. Use appropriate tools. Have another person to help you.
- **MOUNTING:** All parts and connections removed from the vehicle must be reinstalled in accordance with the vehicle manufacturers' specifications or replaced by parts delivered by SW-MOTECH. Secure all threads, unless otherwise specified, with medium-strength liquid thread locker.  
Torque specifications undefined by SW-MOTECH must be obtained from the vehicle manufacturer or by a specialist workshop!
- **FUNCTION CHECK:** After installation make sure that all parts and connections previously removed are properly replaced. Also make sure that no moving parts are obstructed and no function of the vehicle is hindered in any way. Cables and hoses must not rub and/or be pinched. Before starting to ride, perform a comprehensive check of all functions. After the first 50 km and then at regular intervals, check the tightening torque of all screw connections and the proper fit of the product.

## PARTS LIST



\*\*\* **No torque specifications: Use the torque defined by vehicle manufacturer!** The standard torque in this table can be used as long as it is within the vehicle manufacturer's specifications.

Tighten the screws as specified in the parts list.



## URBAN ABS top case

### INTRODUCTION

- Thank you for choosing this premium product from SW-MOTECH. Please visit our webshop for additional information, such as application charts and PDF mounting instructions. Any other documents that may be required (e.g. ABE certifications), are also available for download at our webshop.
- Installation and/or maintenance of this product require good technical understanding! For your own safety SW-MOTECH recommends having installation and/or servicing carried out by a specialist workshop! SW-MOTECH assumes no liability for damage caused by improper installation and/or maintenance work!
- Carefully follow all the directions given in the mounting instructions and pay attention to all relevant information in the vehicle manual during assembly. Nonconformance can lead to vehicle damage or even endanger the driver!
- These mounting instructions are written based on our current state of knowledge. Legal requirements for accuracy do not exist.
- This product was developed for vehicles in their factory setting. Compatibility with original accessory parts or other manufacturers' accessory parts is not guaranteed. Furthermore, BEFORE installing this product, make sure that all moving parts (e.g. the chain) are in the original state of maintenance. Installed accessories can change the driving behaviour and/or stability of your vehicle.

### GENERAL INFORMATION

Observe the country-specific regulations concerning vehicle registration / operation as well as TUV regulations if applicable. If required, register installed parts in the vehicle documents through an appropriate inspection

authority.

- **PREPARATION:** Read the mounting instructions carefully and make sure that all items of the parts list are included. Make sure that your vehicle is parked safely and cannot fall over. Turn off the engine and remove the ignition key. Let the motor / exhaust cool off if necessary. Disconnect the vehicle battery when working on the electrical system. Use appropriate tools. Have another person to help you.
- **FUNCTION CHECK:** This is a universal product. For this reason make sure BEFORE the first use, that the product can be fixed properly and used without problems with your vehicle type. After fixation also make sure that no moving parts are obstructed and the function of the vehicle is not hindered in any way. Lamps as taillight and turn signals must not be limited in their function. Cables and hoses must not rub and/or be pinched. Before starting to ride, perform a comprehensive check of all functions.

**PRODUCT SPECIFIC INFORMATION**

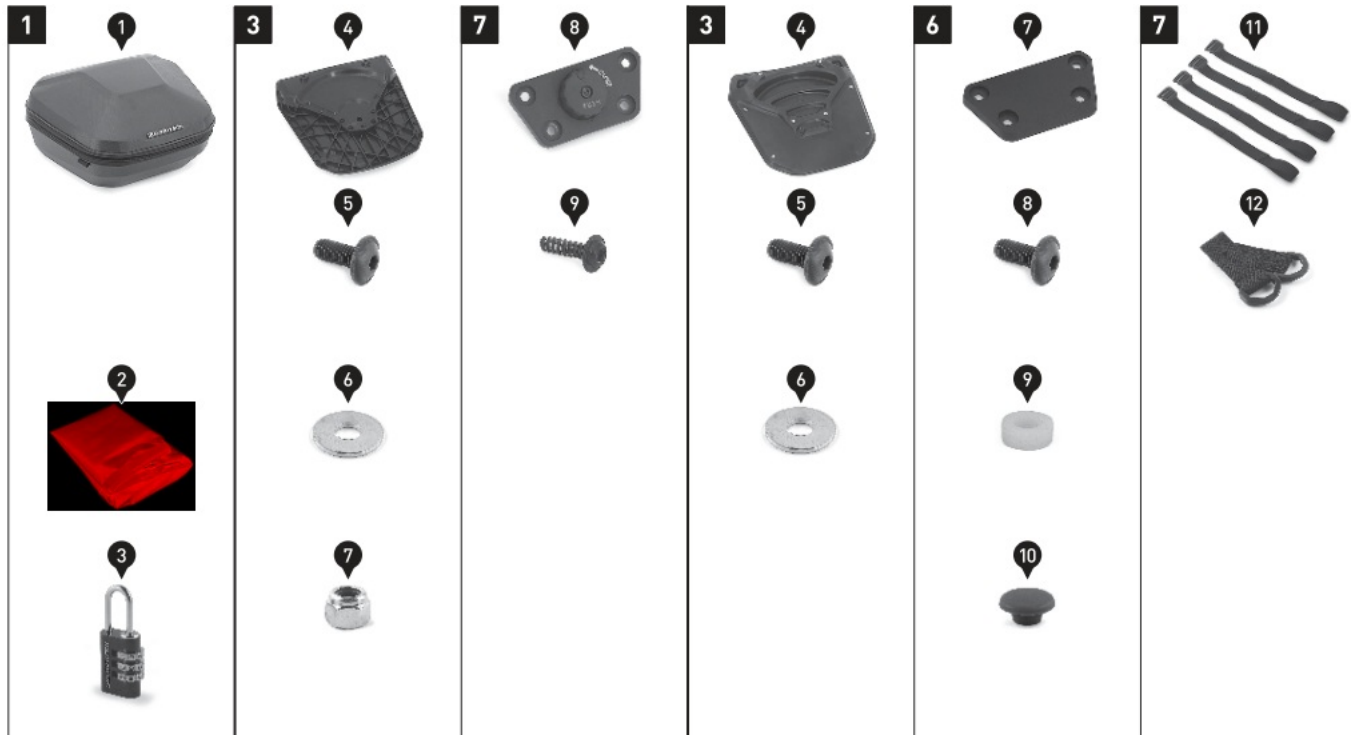
**ATTENTION:** Riding with this product may affect the motorcycles driving and braking performance!

**ATTENTION:** Before riding and at each stop (every 200 km) check proper fixation of the product!

Maximum Load	Maximum Speed
 7,5 KG (16,5 lbs)	 130 km/h (80 mph)

**ATTENTION:** The maximum load of the used SW-MOTECH luggage rack must not be exceeded (refer mounting instructions of the SW-MOTECH luggage rack); make sure to take into account the dead weight of the top case (3 kg)! The maximum vehicle load specified by the manufacturer must not be exceeded!

**PARTS LIST**



Schritt Step	Nr. No.	Art.-Nr. / Bezeichnung * Item No. / Description *	Artikel	Part	Anzahl ** Quantity **	N-m ***												
			Beide Varianten	Both variants														
1	(1)		URBAN ABS Topcase	URBAN ABS top case	1 /1													
	(2)	BC.ZUB.00.105.30000	Wasserdichte Innentasche	Waterproof inner bag	1 /1													
	(3)	BC.LOC.00.001.10200/B	Motorradtaschen-Schloss	Lock for motorcycle luggage	1 /1													
		BC.HTA.00.677.21000	URBAN ABS Topcase für STREET-RACK	URBAN ABS top case for STREET-RACK														
3	(4)	BC.HTA.00.677.500.01	Verschlusssystem	Locking System	1 /1													
	(5)	M5 x 12; ISO 7380	Linsenkopfschrauben; schwarz	Lenshead Screws; black	6 /6	2,5												
	(6)	ø 5,3; DIN 9021	Unterlegscheibe; Edelstahl	Washer; stainless steel	6 /6													
	(7)	M5; DIN 985	Mutter, selbstsichernd; Edelstahl	Lock Nut; stainless steel	6 /6													
7	(8)	HTA.00.864.500.07	Diebstahlsicherung	Anti-Theft Device	1 /1													
	(9)	4,5 x 16	Linsenkopfschraube, gewindefurchend	Lenshead Screw, self-tapping	4 /4	2,5												
		BC.HTA.00.677.22000	URBAN ABS Topcase als Verzurrvariante	URBAN ABS top case as lashing variation														
3	(4)	BC.HTA.00.677.900.01	Schaumgummiboden	Foam Rubber Base	1 /1													
	(5)	M5 x 12; ISO 7380	Linsenkopfschrauben; schwarz	Lenshead Screws; black	6 /8	2,5												
	(6)	ø 5,3; DIN 9021	Unterlegscheibe; Edelstahl	Washer; stainless steel	6 /6													
6	(7)	HTA.00.864.012	Abdeckplatte	Cover Plate	1 /1													
	(8)	M5 x 12; ISO 7380	Linsenkopfschrauben; schwarz	Lenshead Screws; black	2 /8	2,5												
	(9)	Ø 11 / ø 6 / h 4	Distanzbuchse; Kunststoff	Spacer; plastic	2 /2													
	(10)	KEK.00.M8.ISK	Kunststoffkappe; schwarz	Plastic Cap; black	2 /2													
7	(11)	BC.ZUB.00.097.30000	Schlaufgurt-Set (4 Stück)	Loop Strap Set (4 pieces)	1 /1													
	(12)	BC.ZUB.00.004.30000	Verzurrösen-Set (2 Stück)	Lashing Eye Set (2 pieces)	1 /1													
8.8	Regelgewinde / Coarse Thread Ø		M4	M5	M6	M8	M10	M12	10.9	Regelgewinde / Coarse Thread Ø		M4	M5	M6	M8	M10	M12	
	Stahl FK 8.8 / Steel CL 8.8		N-m	2,8	5,5	9,6	23	46		79	Stahl FK 10.9 / Steel CL 10.9		N-m	4,1	8,1	14	34	67

\* Alle Maßangaben in Millimeter. - \*\* Der zweite Wert gibt die Gesamtanzahl des jew. Artikels in der Lieferung an.  
 \*\*\* **Keine Anzugsmomentvorgabe: Verwenden Sie das vom Fzg.-Hersteller definierte Anzugsmoment!** Das Standard-Anzugsmoment der Tabelle kann verwendet werden, wenn es den Fzg.-Hersteller-Vorgaben entspricht.

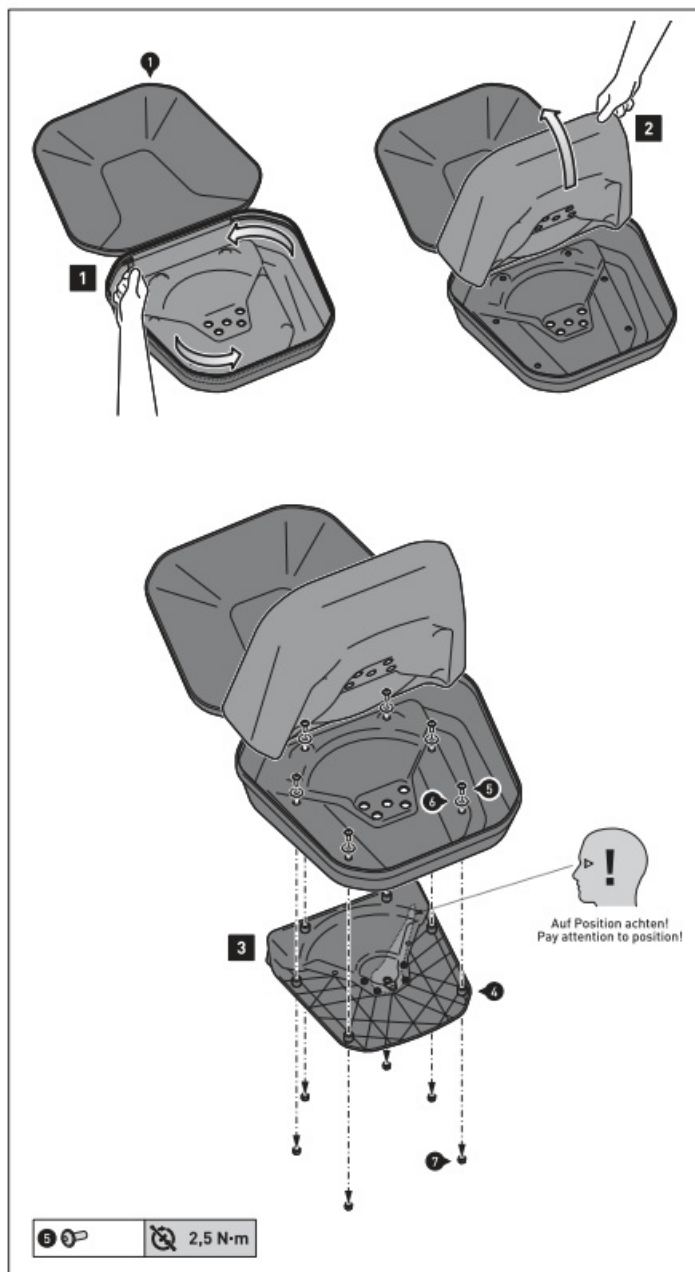
\* All measurements in millimeters. - \*\* The second number indicates the total quantity of the part in the delivery.  
 \*\*\* **No torque specifications: Use the torque defined by vehicle manufacturer!** The standard torque in this table can be used as long as it is within the vehicle manufacturer's specifications.

## MOUNTING

### • URBAN ABS top case for STREET-RACK

- **Step [1]:** Open the lid and inner zipper of the top case (1).
- **Step [2]:** Flip up the inner lining.
- **Step [3]:** Attach the locking system (41 under the top case (1). Pay attention to the position of the locking lever (closed).

Tighten the screws as specified in the parts list.

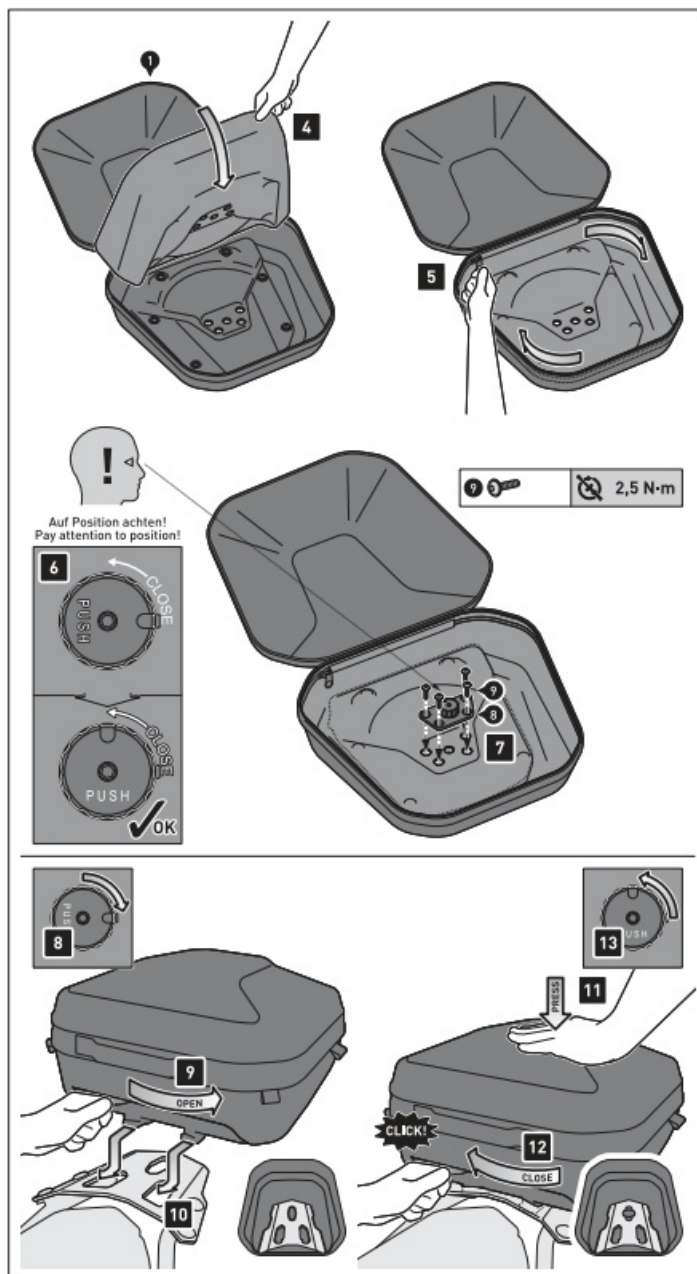


- **Step [4]:** Flip down the inner lining.
- **Step [5]:** Close the inner zipper of the top case I 1).
- **Step [6]:** Turn the locking button of the anti-theft device [8] to the closed position.
- **Step [7]:** Attach the anti-theft device [8] inside the top case [1]. Tighten the screws as specified in the parts list.

#### • MOUNTING TO THE STREET-RACK

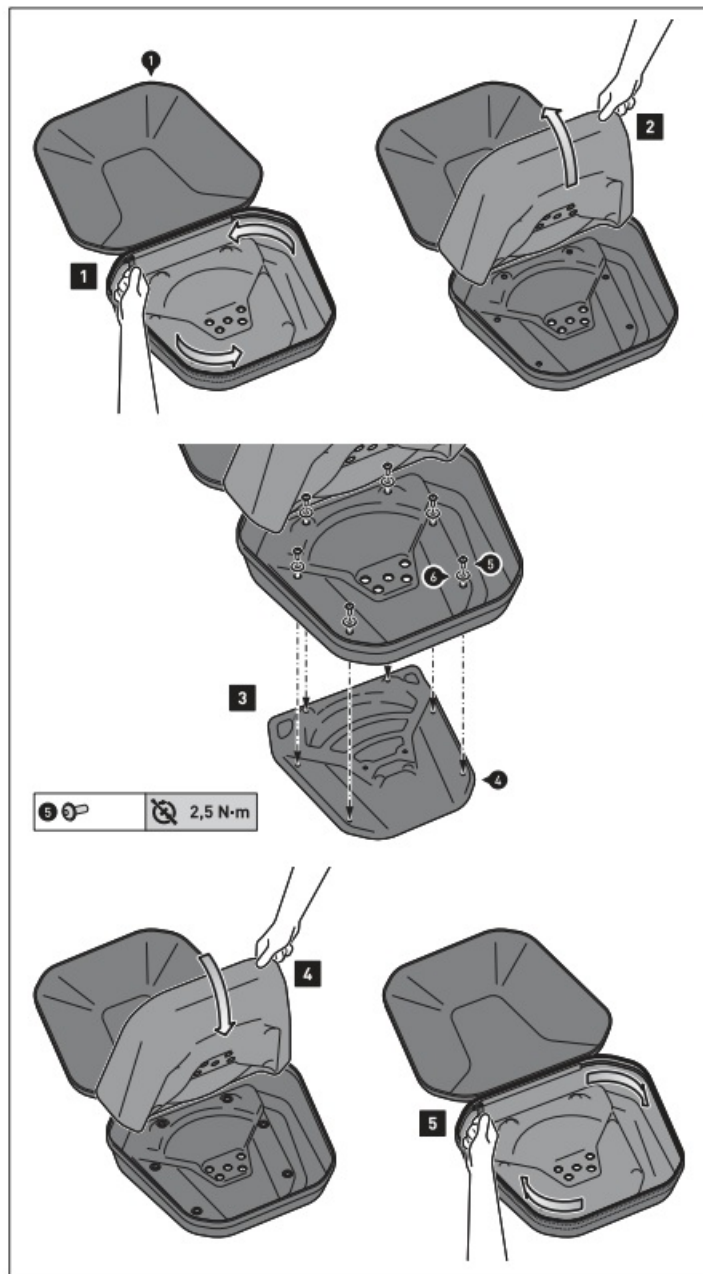
- **Step [8]:** Turn the locking button into the open position.
- **Step [9]:** Push the locking lever into the open position.
- **Step [10]:** Slide the locking system [4] with the two hooks into the openings of your STREET-RACK [sold separately).
- **Step [11]:** Press the top case [1] slightly down ...
- **Step [12]:** ... and close the locking lever. Pay attention to the audible snap sound.
- **Step [13]:** Secure the top case via locking button of the anti-theft device [8] against theft and check the proper fit on the vehicle.

**TIP:** We recommend leaving the locking button of the anti-theft device [8] in the closed position during the ride.



#### • URBAN ABS top case as lashing variation

- **Step [1]:** Open the lid and inner zipper of the top case 111.
- **Step [2]:** Flip up the inner lining.
- **Step [3]:** Attach the foam rubber base 14) under the top case 11]. Tighten the screws as specified in the parts list.
- **Step [4]:** Flip down the inner lining.
- **Step [5]:** Close the inner zipper of the top case I 1 J.



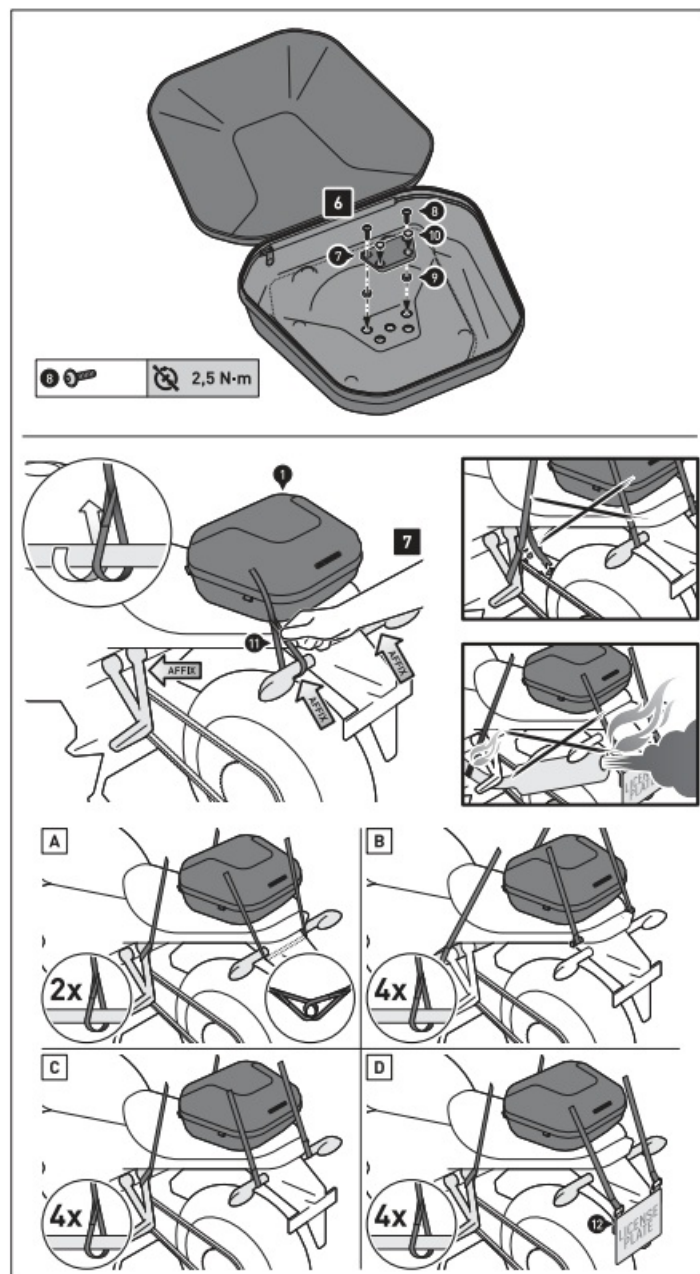
- **Step [6]:** Attach the cover plate (7) inside the top case (11).
- Tighten the screws as specified in the parts list.

#### • **FIXATION TO THE VEHICLE**

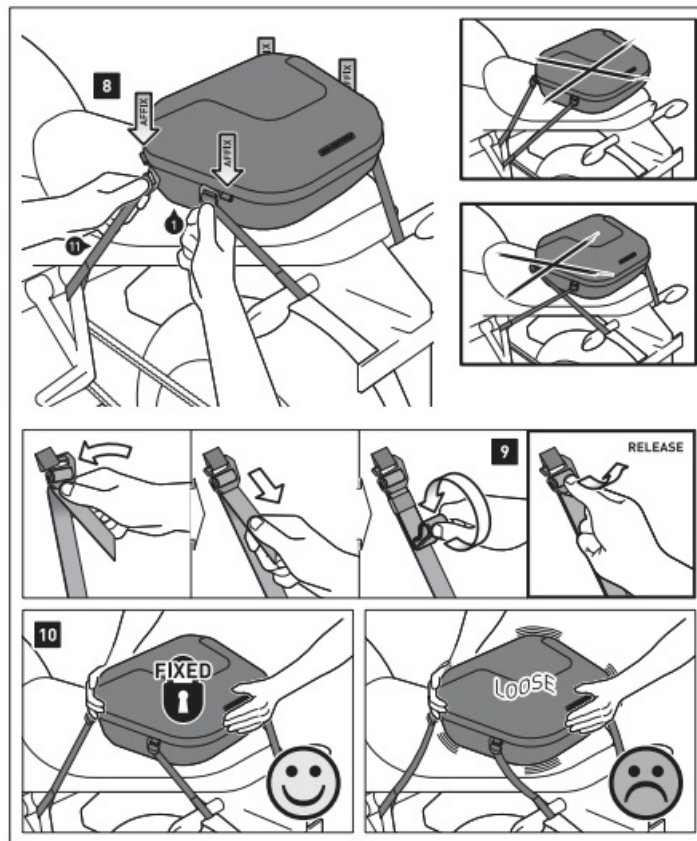
- Step [7]: On both sides entangle TWO loop straps (11 I to appropriate and reliable attachment points in the rear area of the vehicle (e.g. luggage hook etc.).
- Then entangle on both sides TWO loop straps (11 I to appropriate and reliable attachment points of the vehicle (e.g. vehicles frame, footrest mounts etc.).

#### • **FUNCTION CHECK (MUST BE OBSERVED)**

**ATTENTION:** All loop straps must not contact any hot or moving parts of the vehicle. All loop straps should also remain 15 cm away from hot parts of the vehicle and remain clear of the exhaust stream. For this reason compress the suspension fully several times with your vehicle stationary.

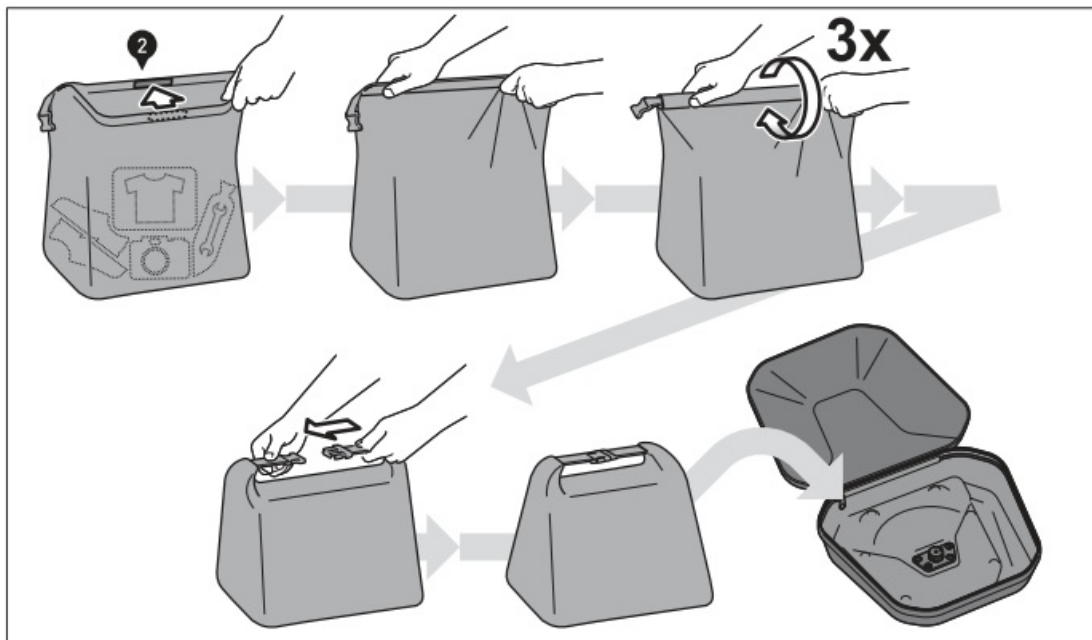


- **Step [8]:** Attach the hook buckles of the loop straps [11] on both sides to the marked loops of the top case [1] as shown in the drawing. Tighten all loop straps until the top case [1] is centered and securely fastened to the vehicle.
- **Step [9]:** Secure the overlength of the loop straps [6] with the rubber loops against flapping.
- **Step [10]:** Check the proper fit of the top case.



## • MOISTURE PROTECTION

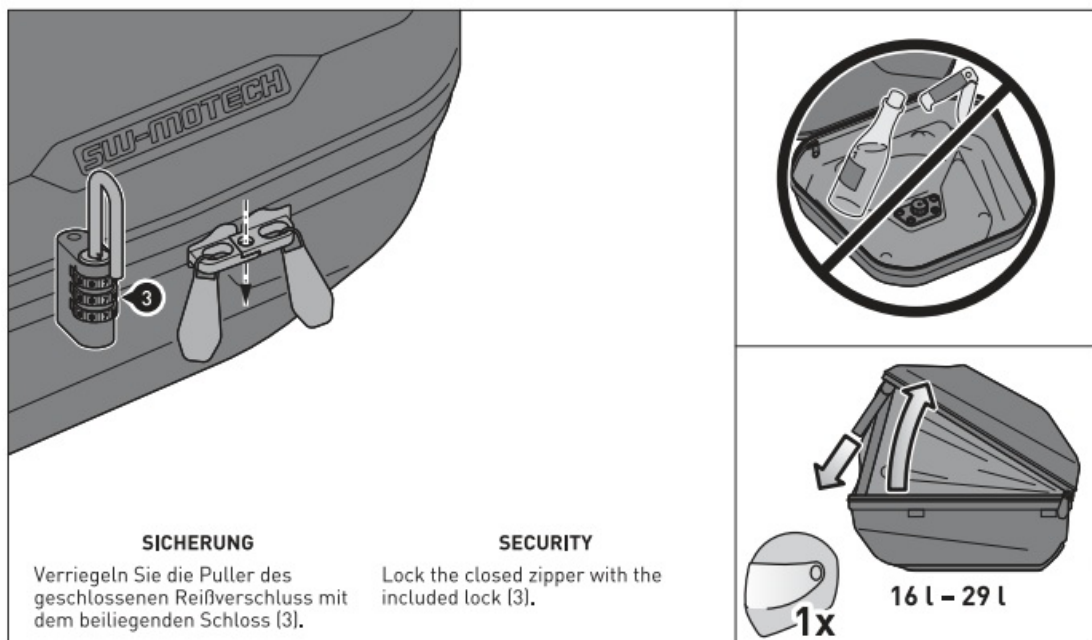
Use the included waterproof inner bag [2] to protect your luggage from moisture.



## • LOADING

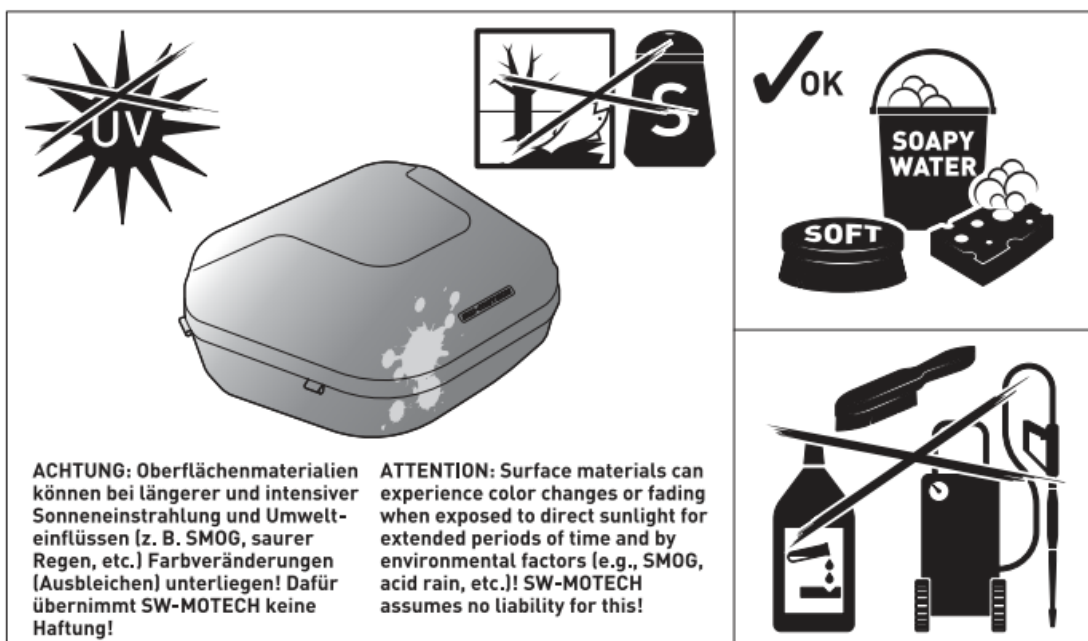
**ATTENTION:** Never store pointy or sharp-edged objects, which could cause injury to persons or damage to the vehicle/top case.

Volume expansion: Open the revolving zipper. For a tight fit the opening angle can be adjusted via the attached straps.



## • CARE

- For cleaning use ONLY a soft textile brush, cloth or sponge and warm soapy water! Rinse with clean water.
- Do NOT use strong cleaning agents, rough cleaning tools or high pressure washer!
- Clean the top case after riding in salty conditions, to avoid damage from salt.



## ABOUT COMPANY

- SW-MOTECH GmbH & Co. KG
  - Ernteweg 8/10
  - 35282 Rauschenberg Germany
  - **Tel. | phone+** 49 (0)6425 / 8168 – 050
  - **Fax/ fax+** 49 (0)6425 / 8168 – 10
  - [info@sw-motech.com](mailto:info@sw-motech.com)
  - [www.sw-motech.com](http://www.sw-motech.com)

## Documents / Resources

<div><div>ANBAUANLEITUNG</div><div><div>GPT.06.921.60000-B</div><div><div>GPT.06.921.19000-B</div><div>GPT.00.152.35000-B</div><div>BC.HTA.00.677.20000-B</div></div></div><div><div>SW-MOTECH</div></div></div>	<div><div><a href="#">SW-MOTECH GPT.06.921.60000-B Case System Yamaha Tracer</a> [pdf] Instruction Manual</div><div>GPT.06.921.60000-B, GPT.06.921.19000-B, GPT.00.152.35000-B, BC.HTA.00.677.20000-B, GPT.06.921.60000-B Case System Yamaha Tracer, GPT.06.921.60000-B, Case System Yamaha Tracer, System Yamaha Tracer, Yamaha Tracer, Tracer</div></div>
------------------------------------------------------------------------------------------------------------------------------------------------------------------------------------------------------------------	-------------------------------------------------------------------------------------------------------------------------------------------------------------------------------------------------------------------------------------------------------------------------------------------------------------------------------------------------------------

## References

- [User Manual](#)

Manuals+. [Privacy Policy](#)

This website is an independent publication and is neither affiliated with nor endorsed by any of the trademark owners. The "Bluetooth®" word mark and logos are registered trademarks owned by Bluetooth SIG, Inc. The "Wi-Fi®" word mark and logos are registered trademarks owned by the Wi-Fi Alliance. Any use of these marks on this website does not imply any affiliation with or endorsement.