

[Skip to content](#)

Manuals+

User Manuals Simplified.



SW-MOTECH GPT.06.799.30000 Set Backpack Instruction Manual

[Home](#) » [SW-MOTECH](#) » SW-MOTECH GPT.06.799.30000 Set
Backpack Instruction Manual



GPT.06.799.30000 Set Backpack
Instruction Manual
GPT.06.799.30000
GPT.06.799.19000/B
GPT.00.152.35500/B
BC.HTA.00.305.30000

Contents [hide](#)

- [1 GENERAL INFORMATION](#)
- [2 PARTS LIST](#)
- [3 MOUNTING](#)
- [4 MOUNTING INSTRUCTIONS](#)
- [5 FASTENING](#)
- [6 LOADING AND CARE](#)
- [7 Documents / Resources](#)
- [8 Related Posts](#)

GENERAL INFORMATION

Observe the country-specific regulations concerning vehicle registration/operation as well as TUV regulations if applicable. If required, register installed parts in the vehicle documents through an appropriate inspection authority.

PREPARATION: Read the mounting instructions carefully and make sure that all items of the parts list are included. Make sure that your vehicle is parked safely and cannot fall over. Turn off the engine and remove the ignition key.

Let the motor/exhaust cool off if necessary. Disconnect the vehicle battery when working on the electrical system. Use appropriate tools. Have another person to help you.

MOUNTING: All parts and connections removed from the vehicle must be reinstalled in accordance with the vehicle manufacturers' specifications or replaced by parts delivered by SW-MOTECH. Secure all threads, unless otherwise specified, with medium-strength liquid thread locker.

Torque specifications undefined by SW-MOTECH must be obtained from the vehicle manufacturer or by a specialist workshop!

FUNCTION CHECK: After installation make sure that all parts and connections previously removed are properly replaced. Also make sure that no moving parts are obstructed and no function of the vehicle is hindered in any way. Cables and hoses must not rub and/or be pinched. Before starting to ride, perform a comprehensive check of all functions. After the first 50 km and then at regular intervals, check the tightening torque of all screw connections and the proper fit of the product.

PRODUCT SPECIFIC INFORMATION

Maximum Load
7.5(16.5)

Maximum Speed
13.km/h(80 mph)

ATTENTION: The indicated maximum load is inclusive the weight of topcase/luggage and adapter kit! The maximum vehicle load specified by the manufacturer must not be exceeded!

PARTS LIST

No	Part	art
2	Mounting Strut; left/ right	2
3	Plastic Plug	4
4	Hexagon Socket Screw; short head; black	4
5	Washer; black	4
6	Spacer; black	4
7	Spacer; black	4
8	Luggage Rack	1
9	Lenshead Screw; black	4
10	Washer; black	4
11	Lock Nut with Flange; black	4
Regelgewinde / Coarse Thread 0	M4 M5 M6 M8 M10 M12	
Stahl FK 10.9 / Steel CL 10.9 N rn	4,1 8,1 14 34 67 115	

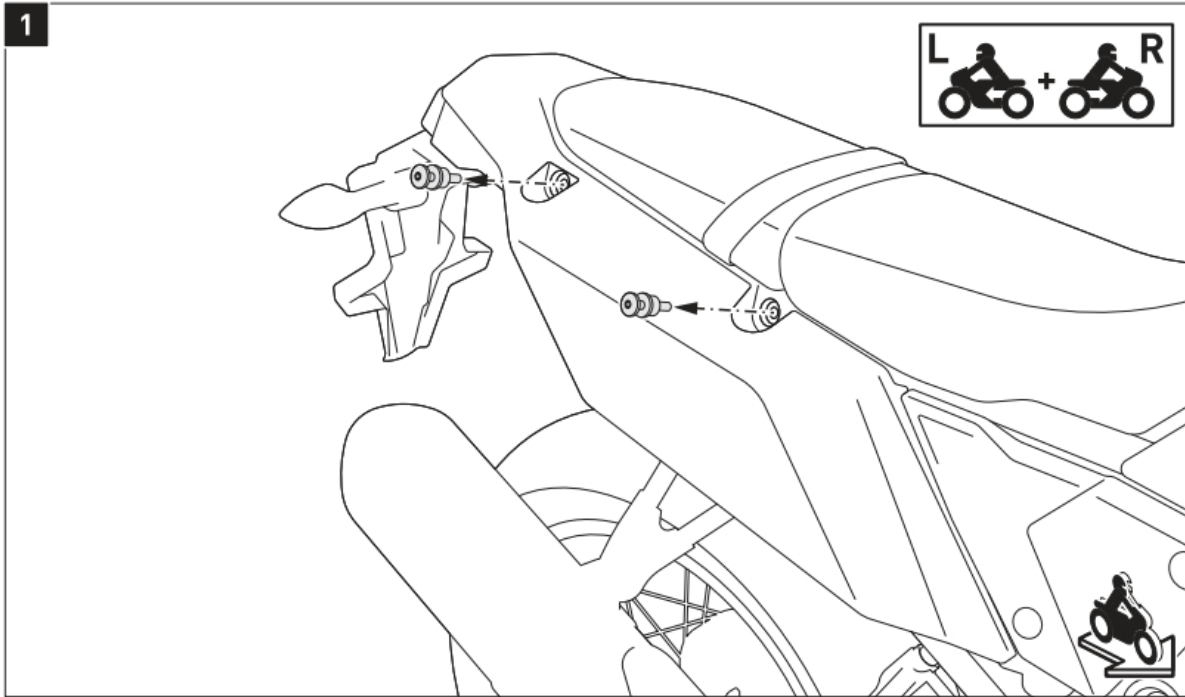
* All measurements in millimeters. –

** The second number indicates the total quantity of the part in the delivery.

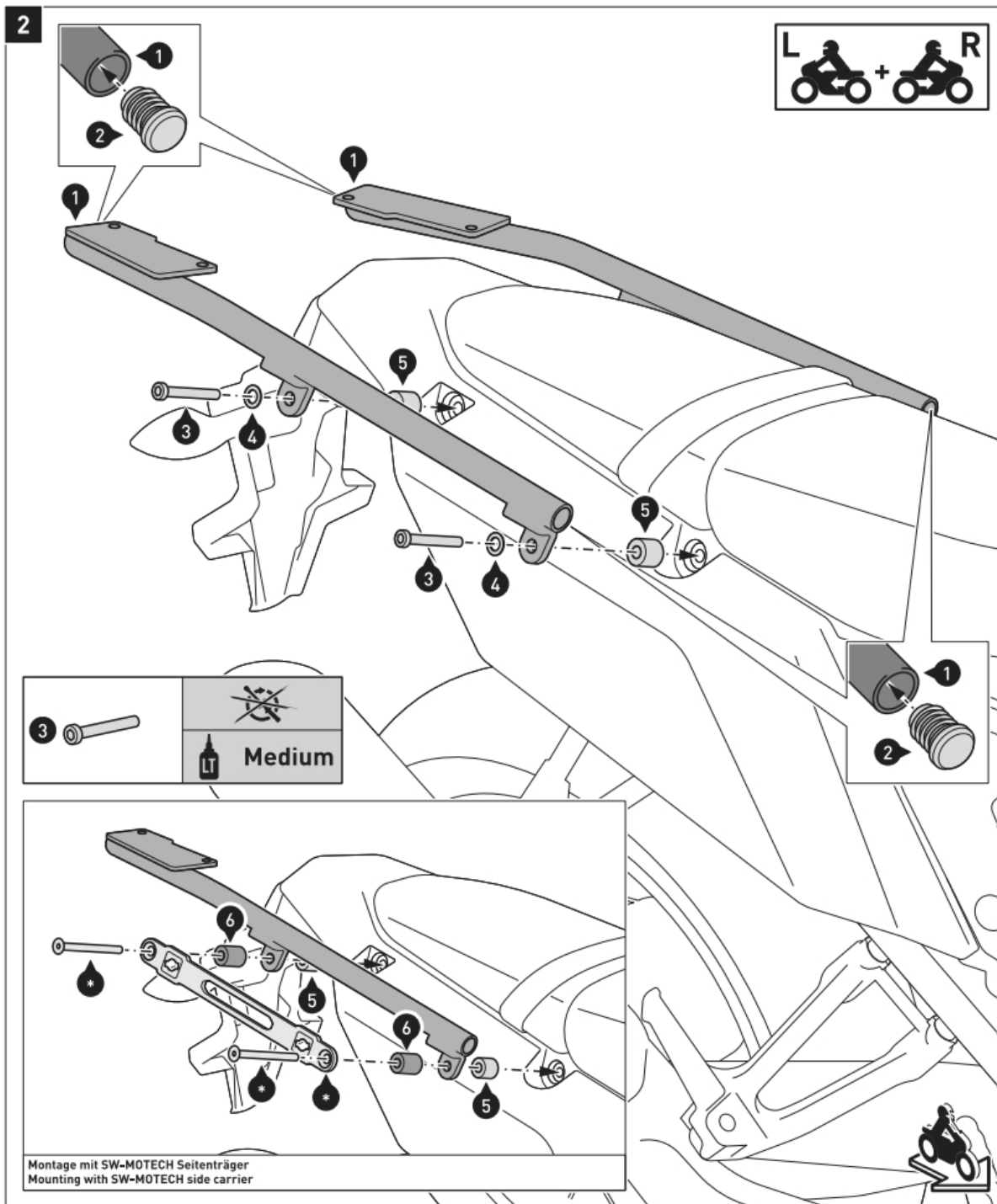
*** No torque specifications: Use the torque defined by vehicle manufacturer! The standard torque in this table can be used as long as it is within the vehicle manufacturer's specifications.



MOUNTING



NOTE. The mounting is shown on the right side of the vehicle only. Repeat the same procedure on the left side of the vehicle with the appropriate parts.
Remove the luggage hooks on both sides of the vehicle.



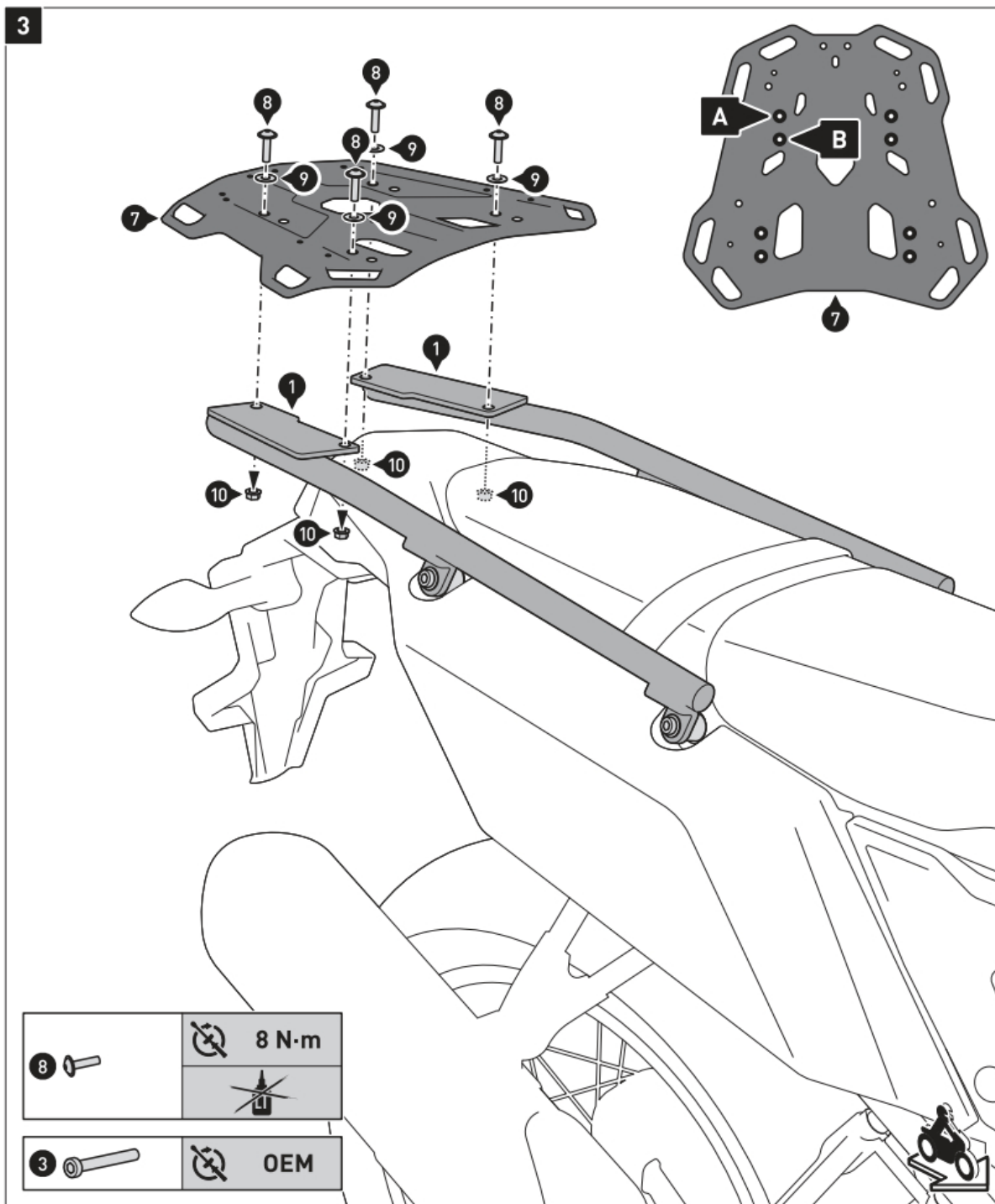
NOTE: When mounting the luggage rack with the SW-MOTECH side earner, the screws /3) are not required. Mount instead the marked parts of the side carrier and the spacers [6], as shown in the drawing.

Insert the plastic plugs [2] into the mounting struts (1).

Attach the mounting struts [1] to the vehicle, as shown in the drawing.

ATTENTION: Use liquid thread locker!

Do not fully tighten the screws yet.



NOTE: Choose the marked front mounting position [A] or the rear mounting position [B] of the luggage rack according to your preferences, as shown in the detail drawing.

Attach the luggage rack [7] to the mounting struts [1], as shown in the drawing.

Once all parts are evenly positioned without excess tension, tighten the screws (8) as specified.

Tighten the screws (3) (see step [2]) with the manufacturers' specified torque.

Observe the country-specific regulations concerning vehicle registration/operation as well as TUV regulations if applicable. If required, register installed parts in the vehicle documents through an appropriate inspection authority.

PREPARATION: Read the mounting instructions carefully and make sure that all items of the parts list are included. Make sure that your vehicle is parked safely and cannot fall over. Turn off the engine and remove the ignition key.

Let the motor/exhaust cool off if necessary. Disconnect the vehicle battery when working on the electrical system. Use appropriate tools. Have another person to help you.

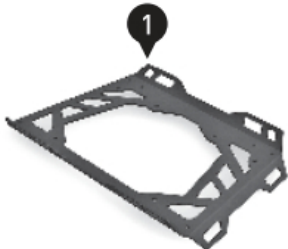
MOUNTING: All parts and connections removed from the vehicle must be reinstalled in accordance with the vehicle manufacturers' specifications or replaced by parts delivered by SW-MOTECH. Secure all threads, unless otherwise specified, with medium-strength liquid thread locker.

Torque specifications undefined by SW-MOTECH must be obtained from the vehicle manufacturer or by a specialist workshop!

FUNCTION CHECK: After installation make sure that all parts and connections previously removed are properly replaced. Also make sure that no moving parts are obstructed and no function of the vehicle is hindered in any way. Cables and hoses must

not rub and/or be pinched. Before starting to ride, perform a comprehensive check of all functions. After the first 50 km and then at regular intervals, check the tightening torque of all screw connections and the proper fit of the product.


No	Part	Quality					
1	Luggage Rack Extension	1/1					
2	Lenshead Screw; black	4/4					
3	Lock Nut	4/4					
Regelgewinde / Coarse Thread 0		M4	M5	M6	M8	M10	M12
Stahl FK 10.9 / Steel CL 10.9 N rn		4,1	8,1	14	34	67	115

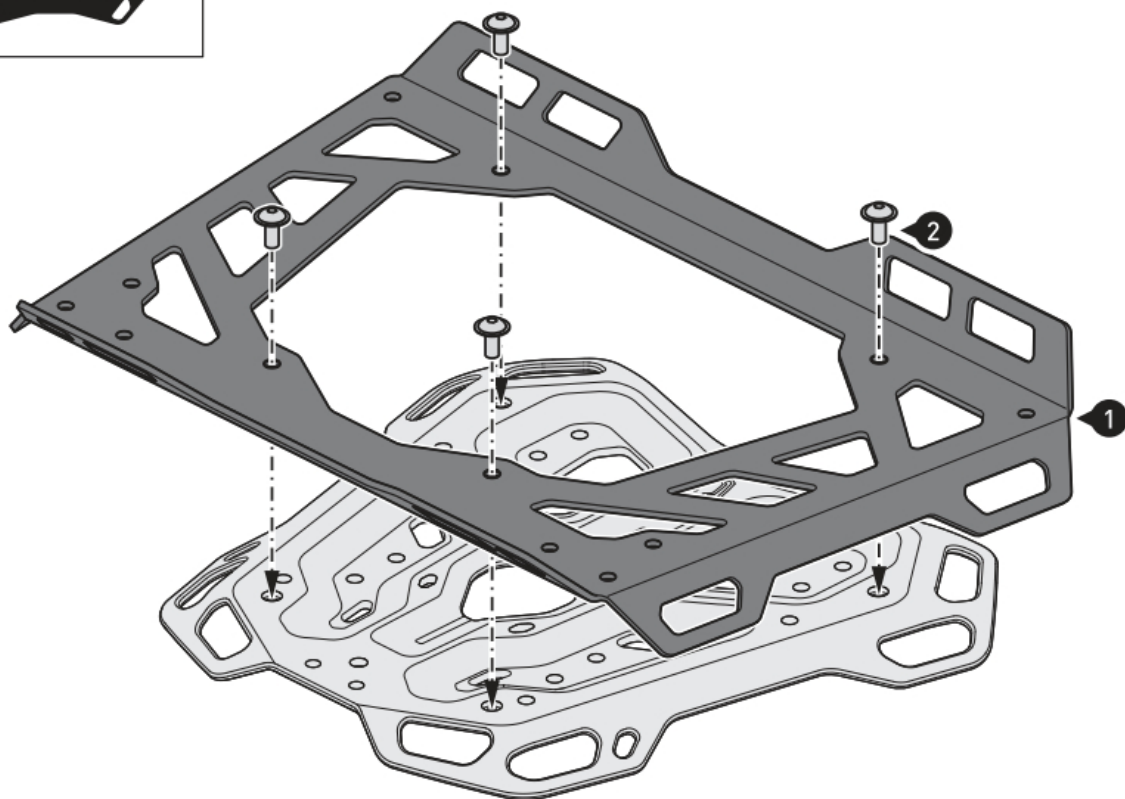


MOUNTING

**ADVENTURE-
ADVENTURE RACK**

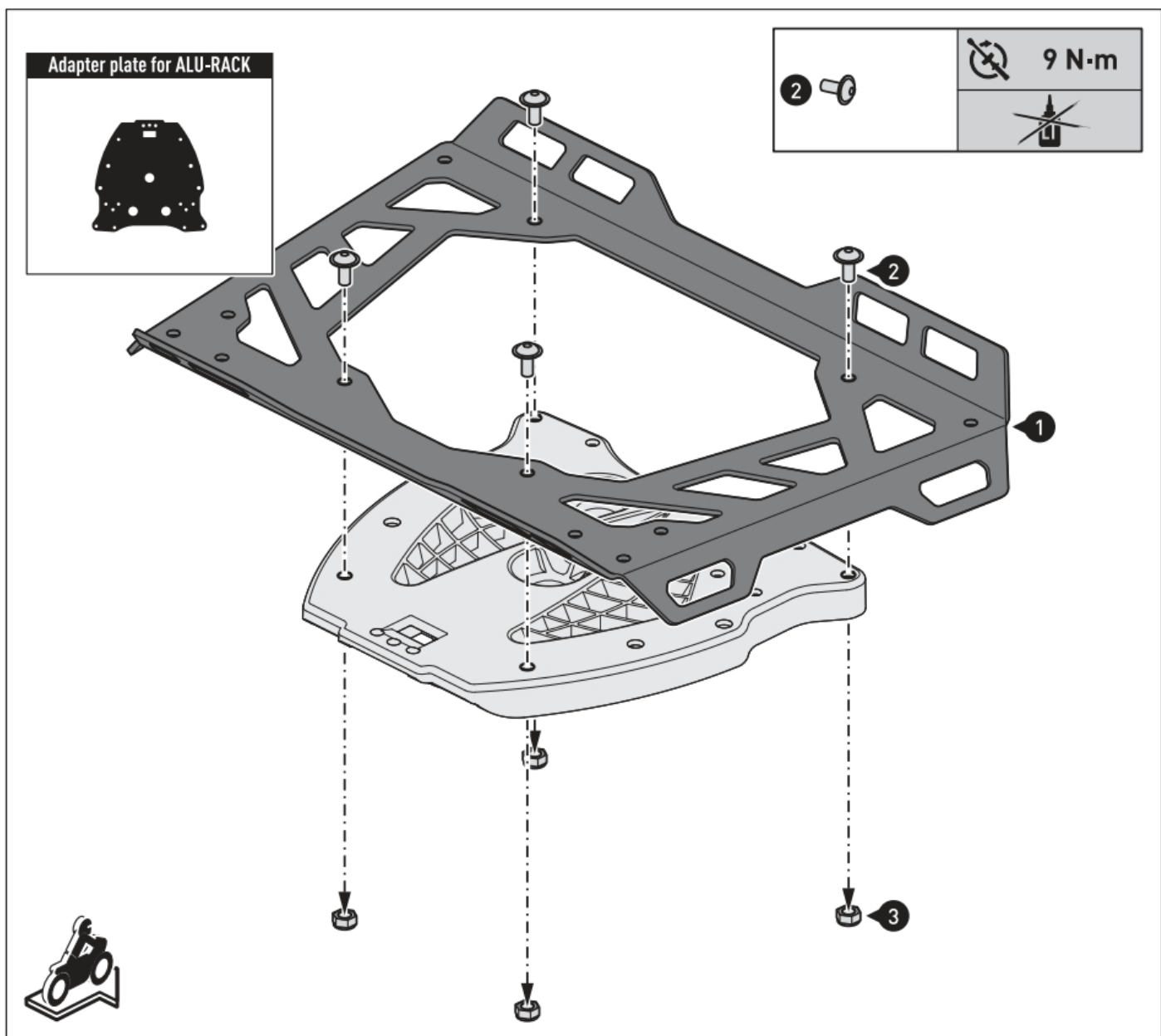


 2	 9 N·m
	 Medium



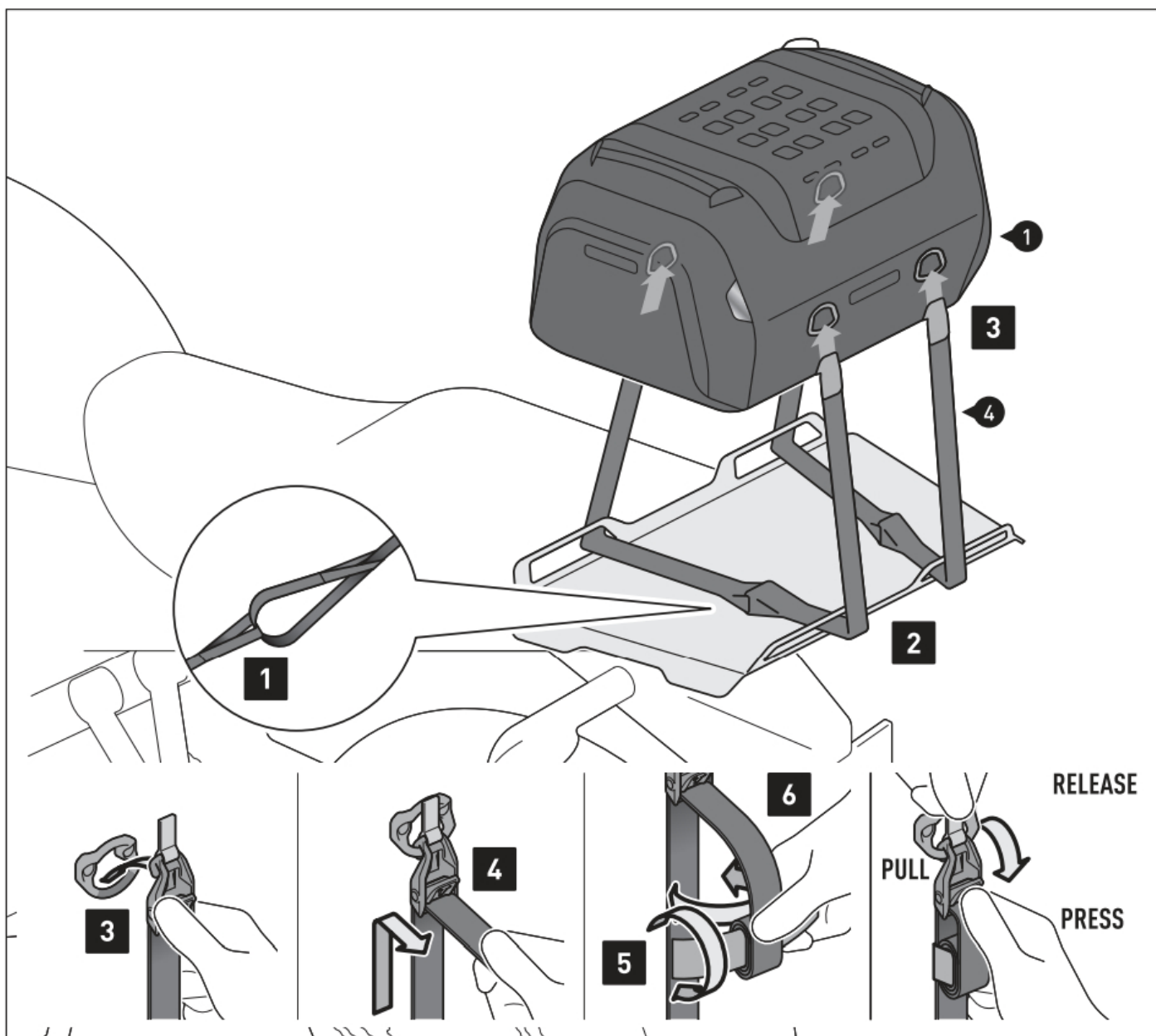
ADVENTURE RACK

Attach the shown parts to your
ADVENTURE RACK [sold separa tely].
ATTENTION: Use liquid thread locker!
Tighten the screws as specified in the parts list.



Adapter plate for STREET-RACK

Attach the shown parts to your adapter plate for STREET-RACK sold separately).
Tighten the screws as specified in the parts list.



Adapter plate for ALU-RACK

Attach the shown parts to your adapter plate for ALU-RACK [sold separately].
Tighten the screws as specified in the parts list.

MOUNTING INSTRUCTIONS

Observe the country-specific regulations concerning vehicle registration/operation as well as TUV regulations if applicable. If required, register installed parts in the vehicle documents through an appropriate inspection authority.

PREPARATION: Read the mounting instructions carefully and make sure that all items of the parts list are included. Make sure that your vehicle is parked safely and cannot fall over. Turn off the engine and remove the ignition key.

Let the motor/exhaust cool off if necessary. Disconnect the vehicle battery when working on the electrical system. Use appropriate tools. Have another person to help you.

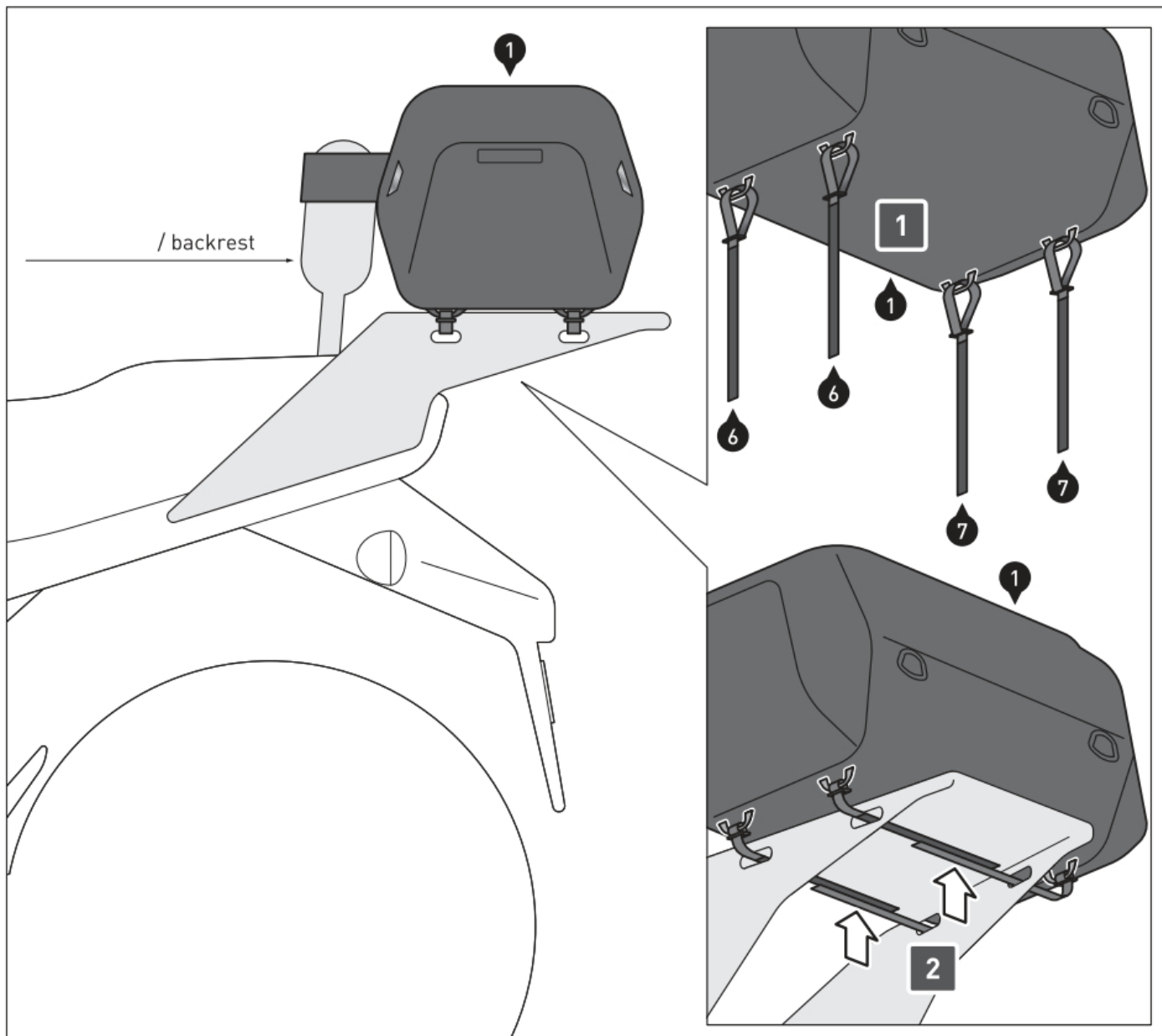
FUNCTION CHECK: This is a universal product. For this reason make sure **BEFORE** the first use, that the product can be fixed properly and used without problems with your vehicle type. After fixation also make sure that no moving parts are obstructed and the function of the vehicle is not hindered in any way.

Lamps as taillight and turn signals must not be limited in their function. Cables and hoses must not rub and/or be pinched. Before starting to ride, perform a comprehensive check of all functions.

All components of the product must not contact any hot or moving parts of the vehicle. All parts should also remain 5 cm away from hot parts of the vehicle and remain clear of the exhaust stream. For this reason compress the suspension fully several times with your vehicle stationary.

ATTENTION: Before riding and at each stop (every 200 km) check proper fixation of the product!

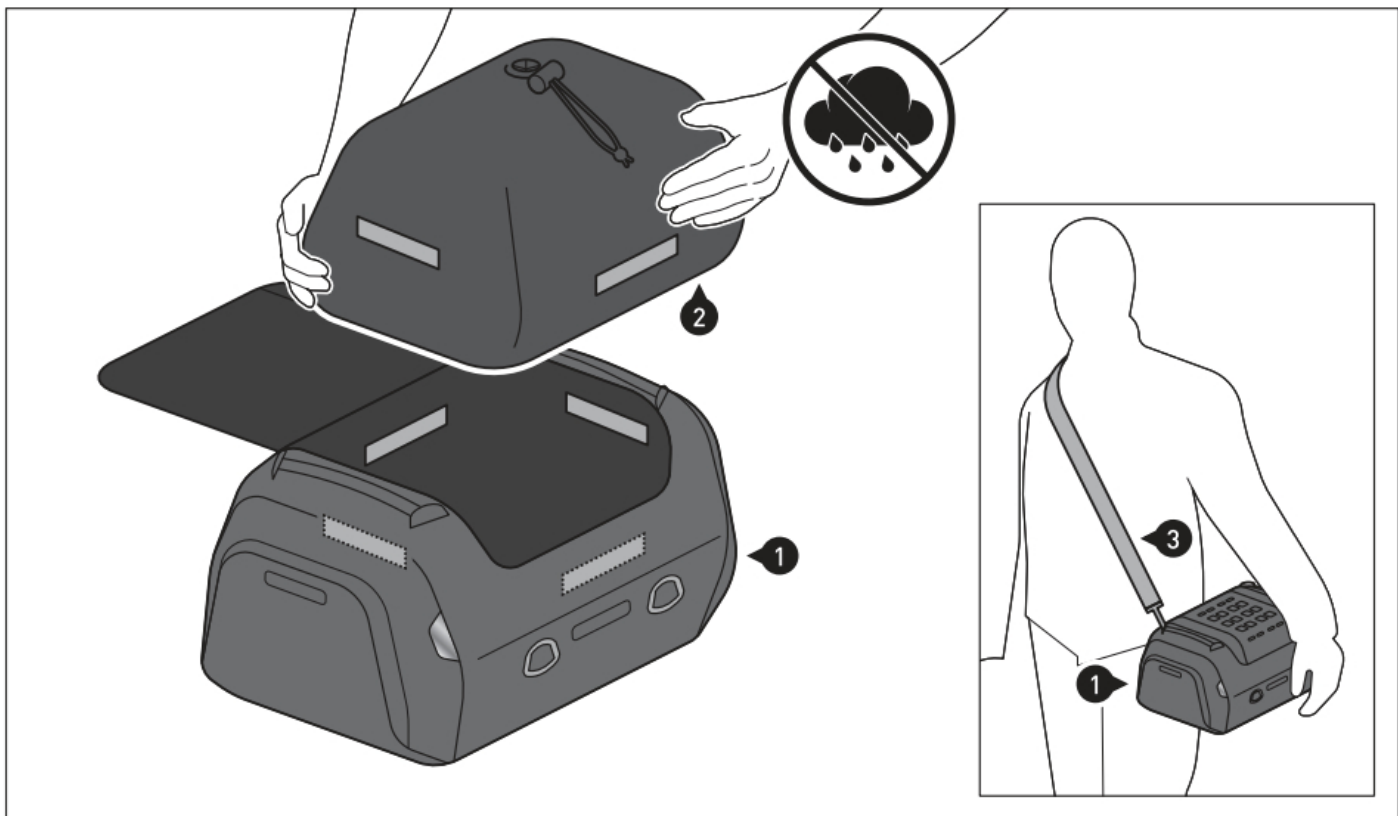
FASTENING



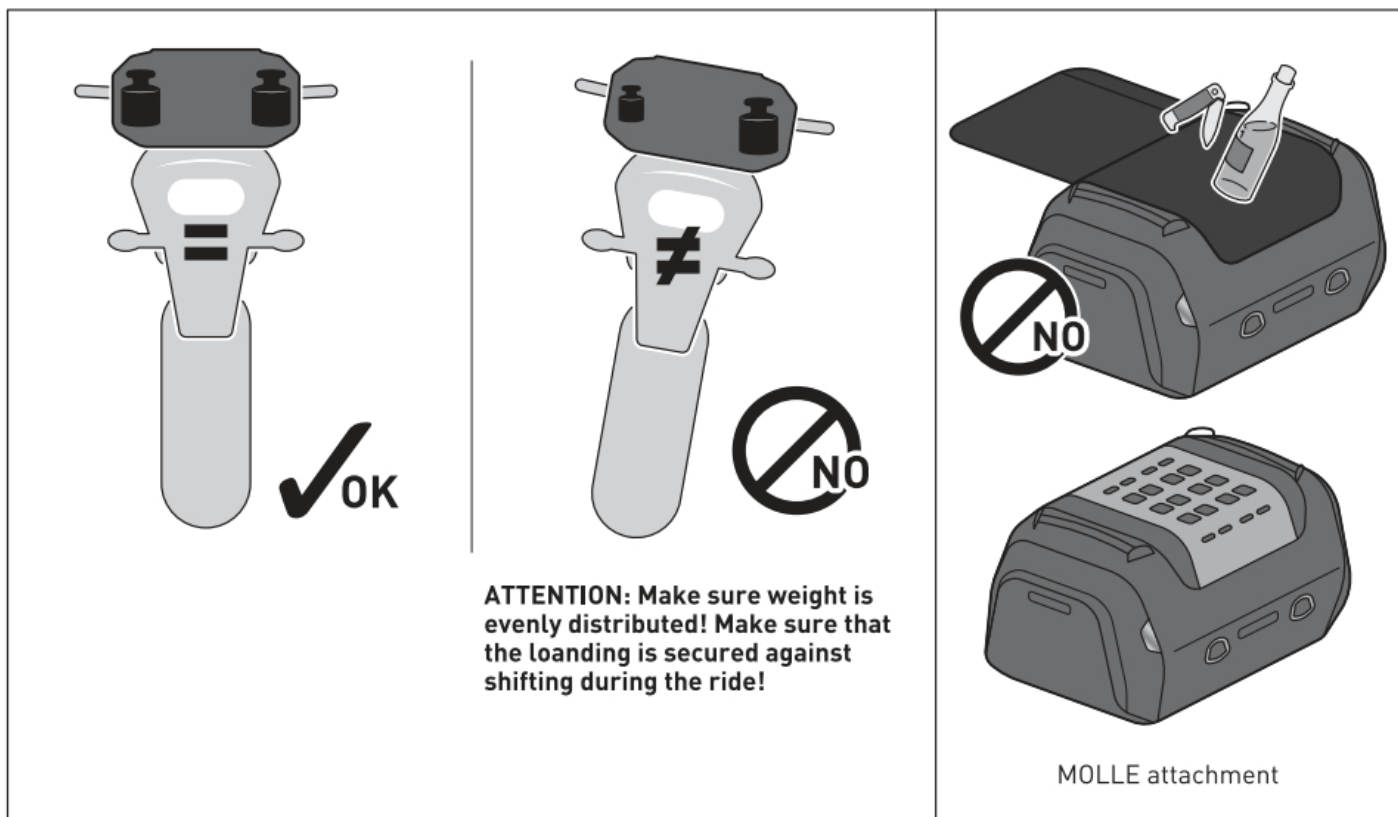
ATTENTION: All components of the tail bag must not contact any hot or moving parts of the vehicle. All parts should also remain 5 cm away from hot parts of the vehicle and remain clear of the exhaust stream.

ATTENTION: Before riding and at each stop (every 200 km) check the proper fixation of the tail bag (1)!

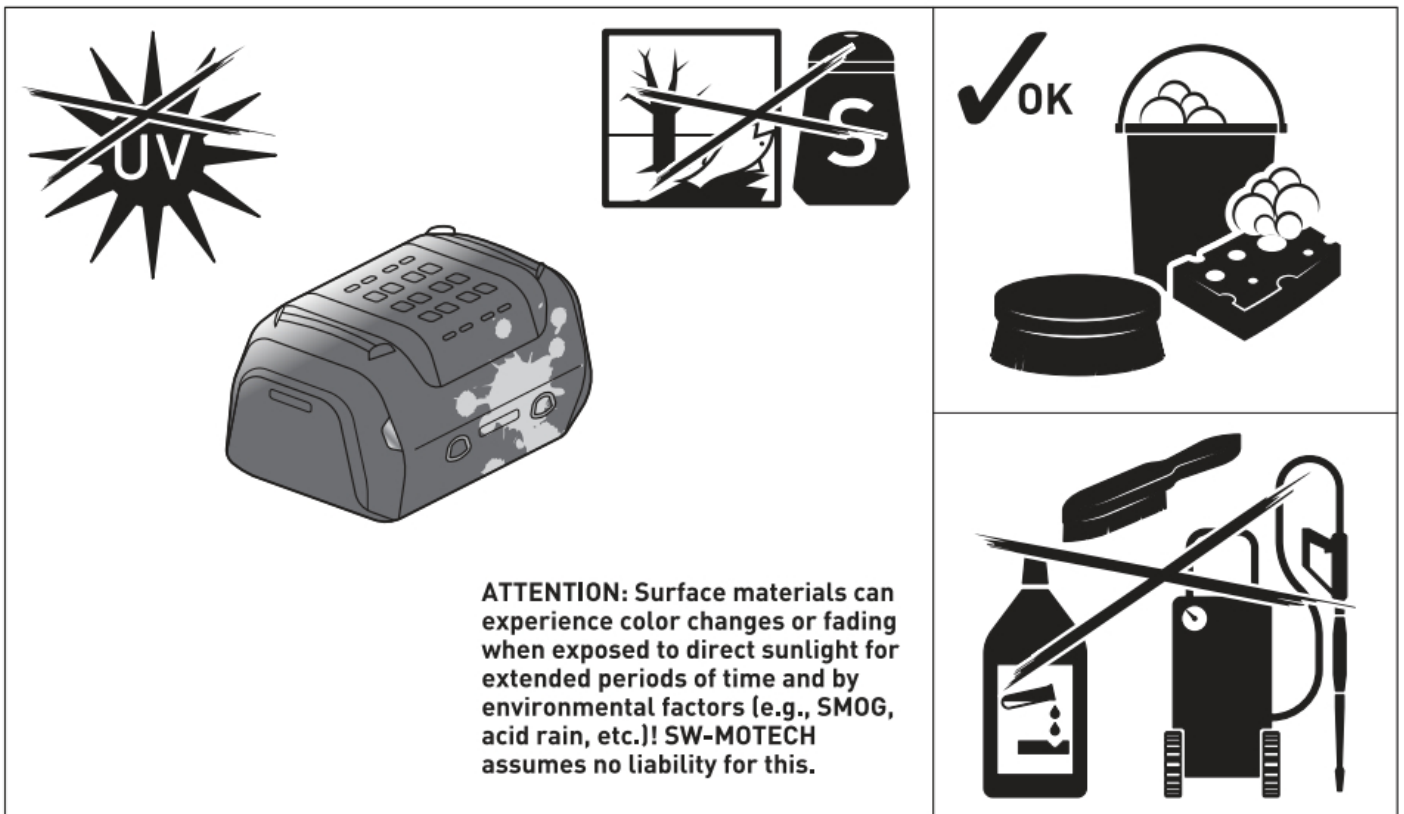
LOADING AND CARE



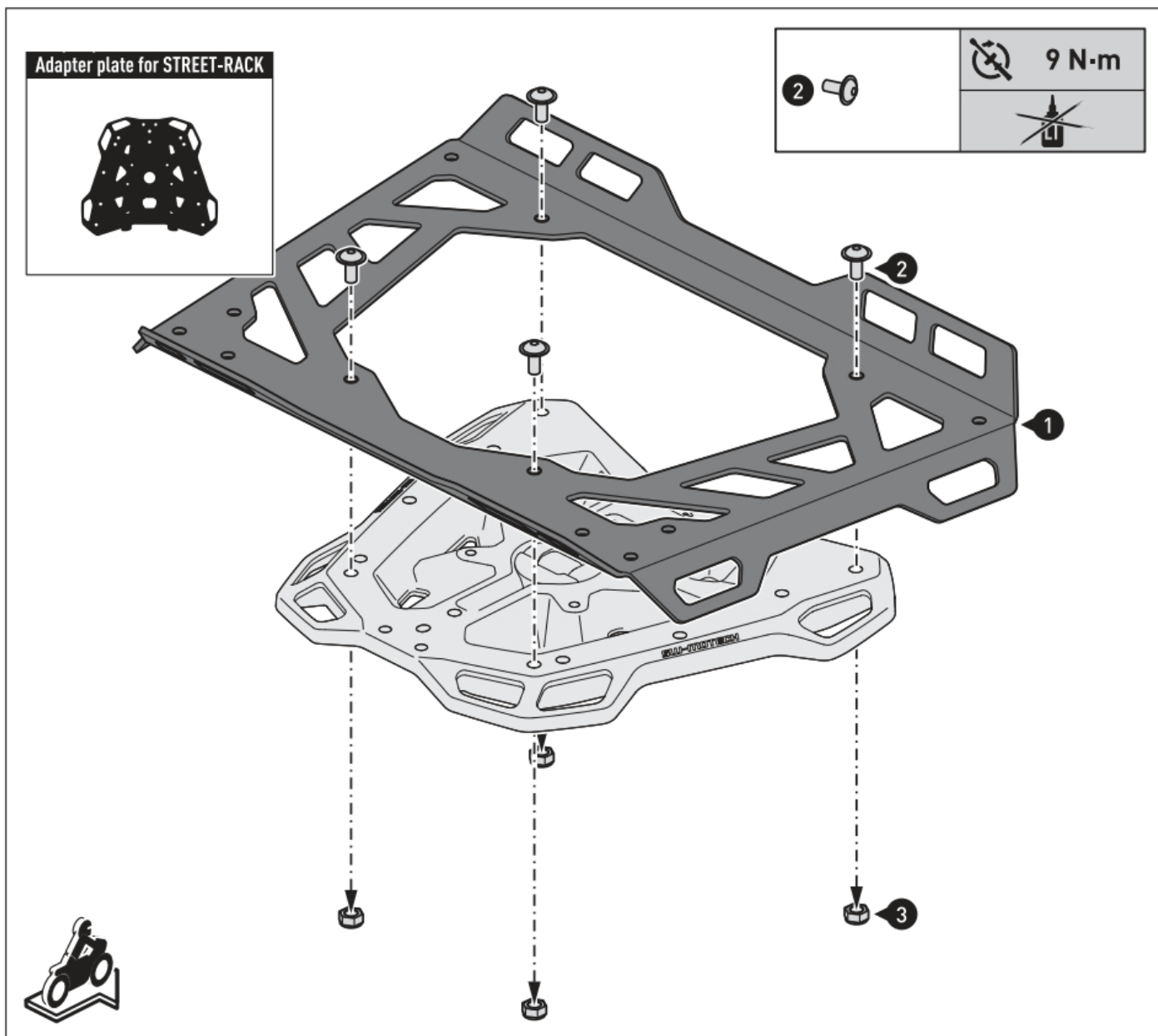
ATTENTION: Always use the included waterproof innerbag (2) to protect your luggage from moisture!
 Fasten the waterproof inner bag [2] to the velcro patch on the inside.
 Additionally protect sensitive luggage [e.g., electronic equipment] from moisture with a plastic bag.



LOADING: Never store pointy or sharp-edged objects, which could cause injury to persons or damage to the vehicle/product
 ONLY loop assigned SW-MOTECH products to the MOLLE attachment



CARE: For cleaning use ONLY a soft textile brush, cloth or sponge and warm soapy water! Rinse with clean water.
Do NOT use strong cleaning agents, rough cleaning tools or high pressure washer!
Clean the product after riding in salty conditions, to avoid damage from salt.



CARE: For cleaning use **ONLY** a soft textile brush, cloth or sponge and warm soapy water! Rinse with clean water. Do **NOT** use strong cleaning agents, rough cleaning tools or high pressure washer! Clean the product after riding in salty conditions, to avoid damage from salt.

Documents / Resources

ANBAUANLEITUNG

GPT.06.799.30000

GPT.06.799.30000
GPT.06.799.30000
GPT.06.799.30000

[SW-MOTECH GPT.06.799.30000 Set Rackpack](#) [pdf] Instruction Manual
GPT.06.799.30000 Set Rackpack, GPT.06.799.30000, Set Rackpack, Rackpack



Manuals+,

- [home](#)
- [privacy](#)