



# SW-MOTECH GPT.05.987.60000 Side Case System Instruction Manual

[Home](#) » [SW-MOTECH](#) » SW-MOTECH GPT.05.987.60000 Side Case System Instruction Manual 

## Contents

- [1 SW-MOTECH GPT.05.987.60000 Side Case System](#)
- [2 URBAN ABS top case](#)
- [3 GENERAL INFORMATION](#)
- [4 PRODUCT SPECIFIC INFORMATION](#)
- [5 URBAN ABS top case for TREET-RACK](#)
- [6 MONTAGE/ MOUNTING](#)
- [7 URBAN ABS top case as lashing variation](#)
- [8 LOADING](#)
- [9 Documents / Resources](#)
- [10 Related Posts](#)



## SW-MOTECH GPT.05.987.60000 Side Case System



### URBAN ABS top case

Thank you for choosing this premium product from SW-MOTECH. Please visit our webshop for additional information, such as application charts and PDF mounting instructions. Any other documents that may be required (e.g. ABE certifications), are also available for download at our webshop. Installation and/or maintenance of this product require good technical understanding! For your own safety SW-MOTECH recommends having installation and/or servicing carried out by a specialist workshop! SW-MOTECH assumes no liability for damage caused by improper installation and/or maintenance work! Carefully follow all the directions given in the mounting instructions and pay attention to all relevant information in the vehicle manual during assembly. Nonconformance can lead to vehicle damage or even endanger the driver! These mounting instructions are written based on our current state of knowledge. Legal requirements for accuracy do not exist.

This product was developed for vehicles in their factory setting. Compatibility with original accessory parts or other manufacturers' accessory parts is not guaranteed. Furthermore, BEFORE installing this product, make sure that all moving parts (e.g. the chain) are in the original state of maintenance. Installed accessories can change the driving behaviour and/or stability of your vehicle.

### GENERAL INFORMATION

Observe the country-specific regulations concerning vehicle registration/operation as well as TUV regulations if applicable. If required, register installed parts in the vehicle documents through an appropriate inspection authority.

#### PREPARATION:

Read the mounting instructions carefully and make sure that all items of the parts list are included. Make sure that your vehicle is parked safely and cannot fall over. Turn off the engine and remove the ignition key. Let the motor/exhaust cool off if necessary. Disconnect the vehicle battery when working on the electrical system. Use appropriate tools. Have another person to help you.

#### FUNCTION CHECK:

This is a universal product. For this reason make sure BEFORE the first use, that the product can be fixed properly and used without problems with your vehicle type. After fixation also make sure that no moving parts are obstructed and the function of the vehicle is not hindered in any way. Lamps as taillight and turn signals must not be limited in their function. Cables and hoses must not rub and/or be pinched. Before starting to ride, perform a comprehensive check of all functions.

### PRODUCT SPECIFIC INFORMATION

**ATTENTION:**

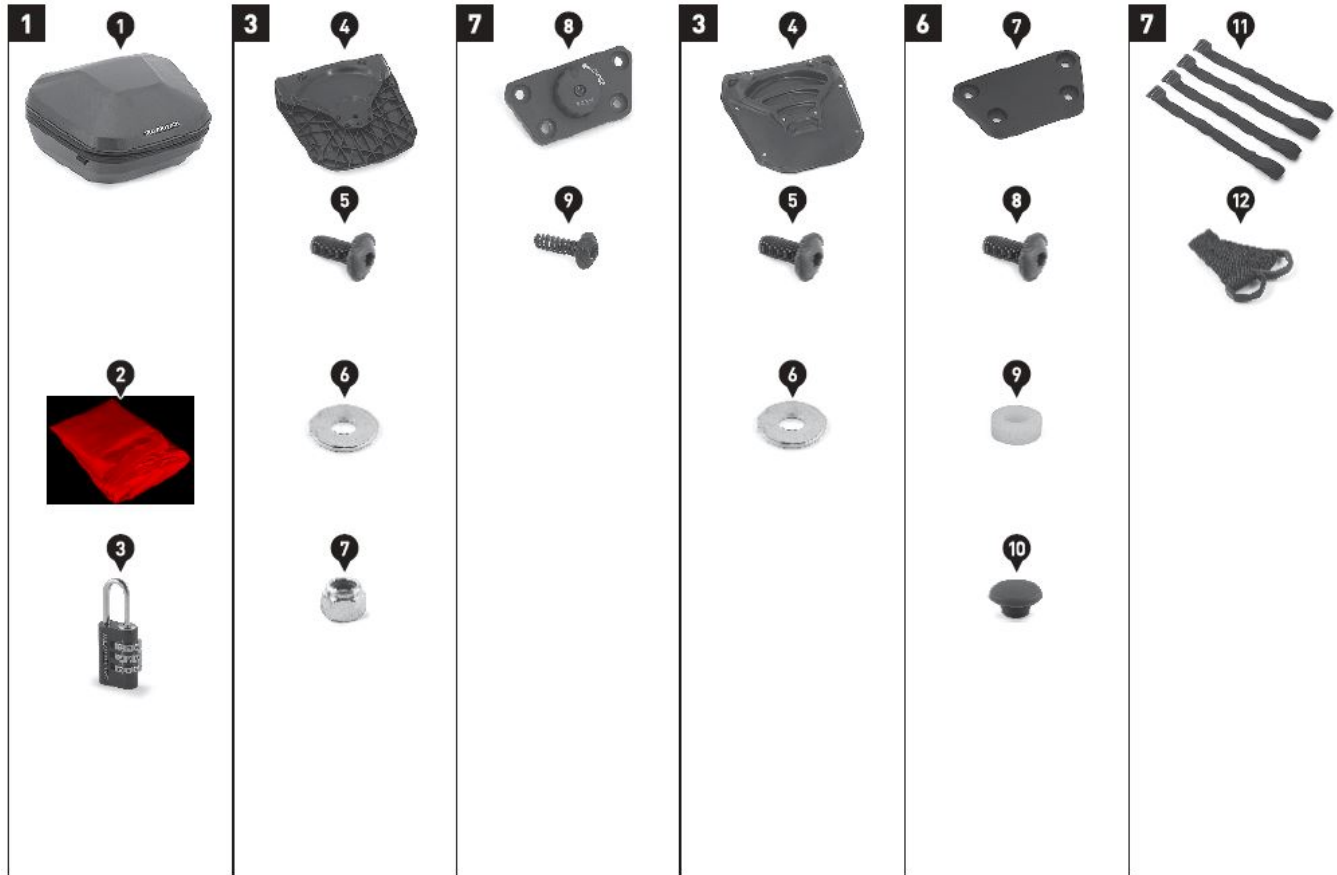
Riding with this product may affect the motorcycles driving and braking performance!

**ATTENTION:**

Before riding and at each stop (every 200 km) check proper fixation of the product!

**ATTENTION:**

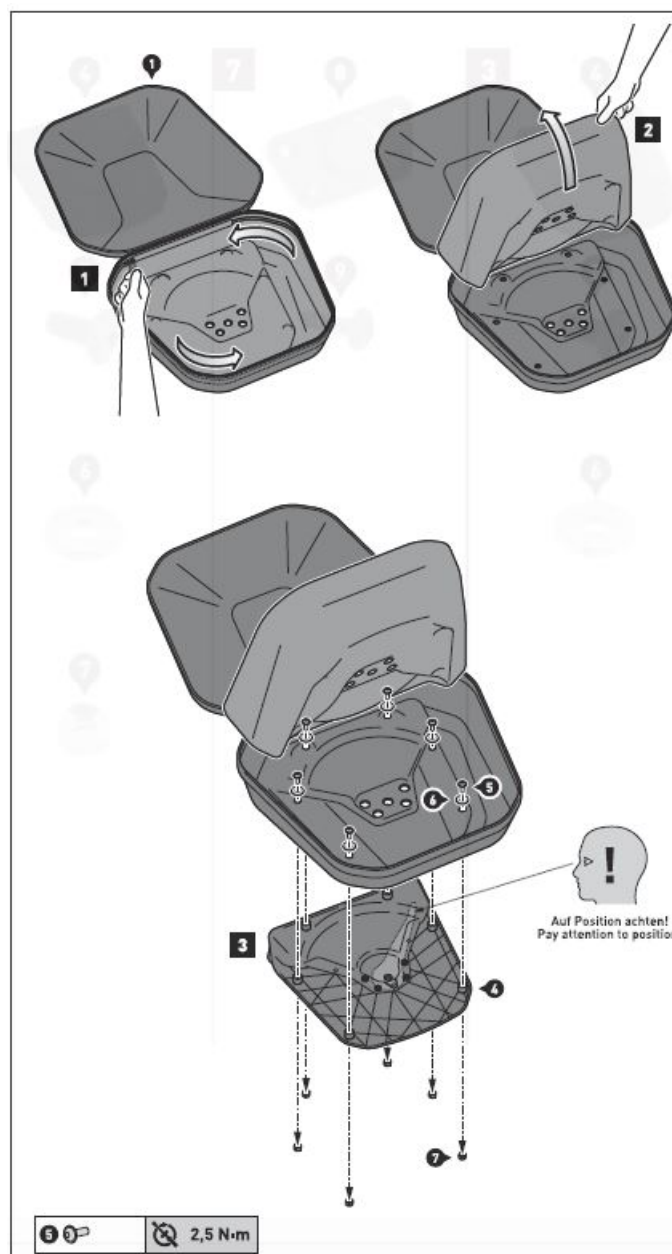
The maximum load of the used SW-MOTECH STREET-RACK / ADVENTURE-RACK must not be exceeded (refer mounting instructions of the rack)! The maximum vehicle load specified by the manufacturer must not be exceeded!

**URBAN ABS top case for STREET-RACK**

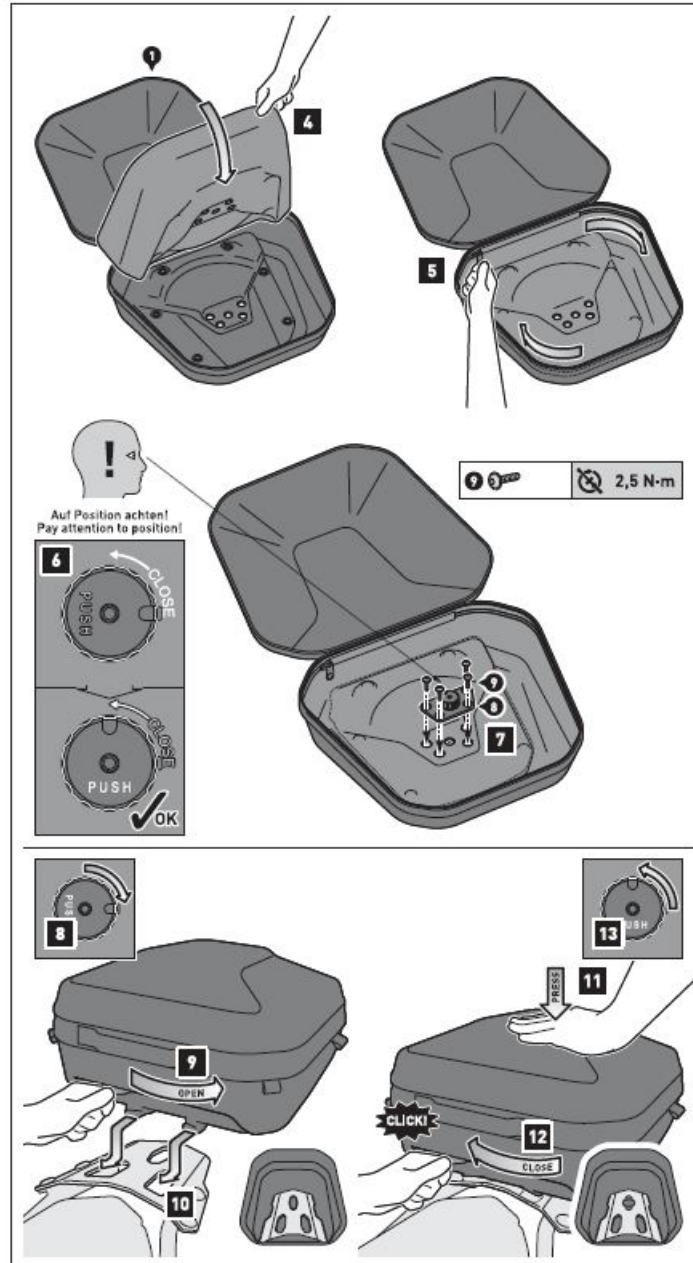
**Step [1]:** Open the lid and inner zipper of the top case (1).

**Step [2]:** Flip up the inner lining.

**Step [3]:** Attach the locking system (41 under the top case (1). Pay attention to the position of the locking lever (closed). Tighten the screws as specified in the parts list.



## MONTAGE/ MOUNTING



**Step [4]:** Flip down the inner lining.

**Step [5]:** Close the inner zipper of the top case (1).

**Step [6]:** Turn the locking button of the anti-theft device [8] to the closed position.

**Step [7]:** Attach the anti-theft device [8] inside the top case [1]. Tighten the screws as specified in the parts list.

## MOUNTING TO THE STREET-RACK

**Step [8]:** Turn the locking button into the open position.

**Step [9]:** Push the locking lever into the open position.

**Step [10]:** Slide the locking system [4] with the two hooks into the openings of your STREET-RACK [sold separately].

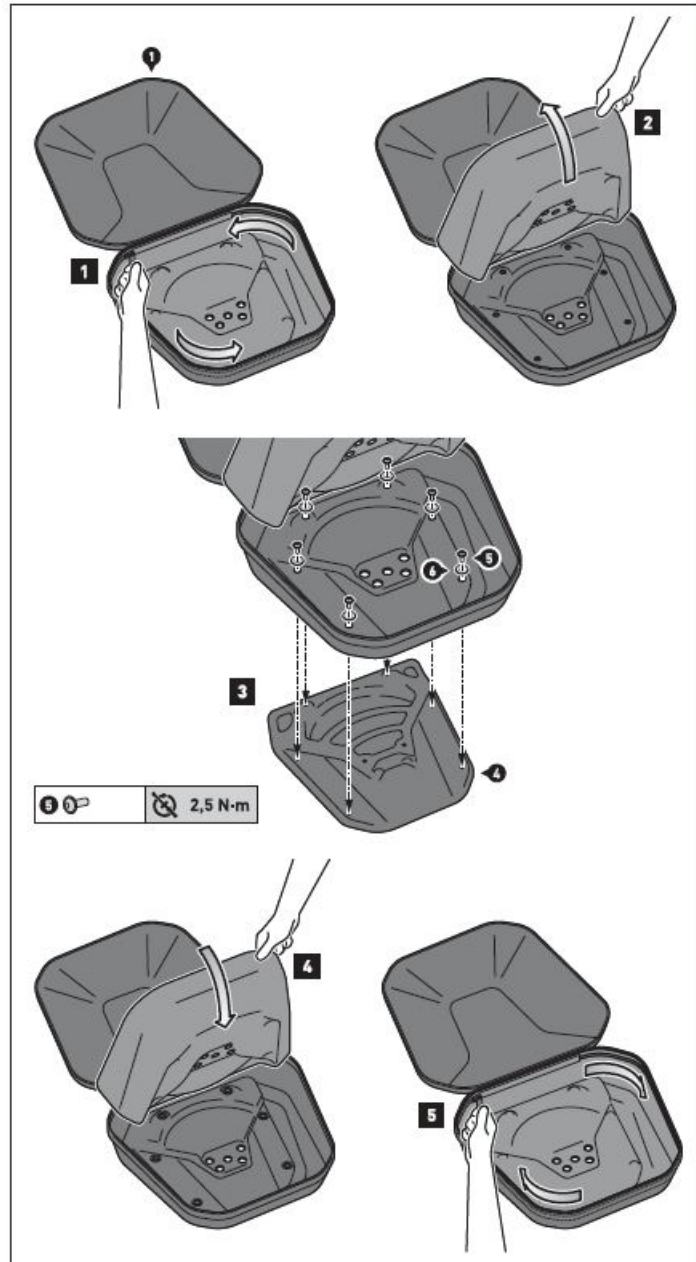
**Step [11]:** Press the top case [1] slightly down ...

**Step [12]:** ... and close the locking lever. Pay attention to the audible snap sound.

**Step [13]:** Secure the top case via locking button of the anti-theft device [8] against theft and check the proper fit on the vehicle.

**TIP:** We recommend leaving the locking button of the anti-theft device [8] in the closed position during the ride.

## URBAN ABS top case as lashing variation



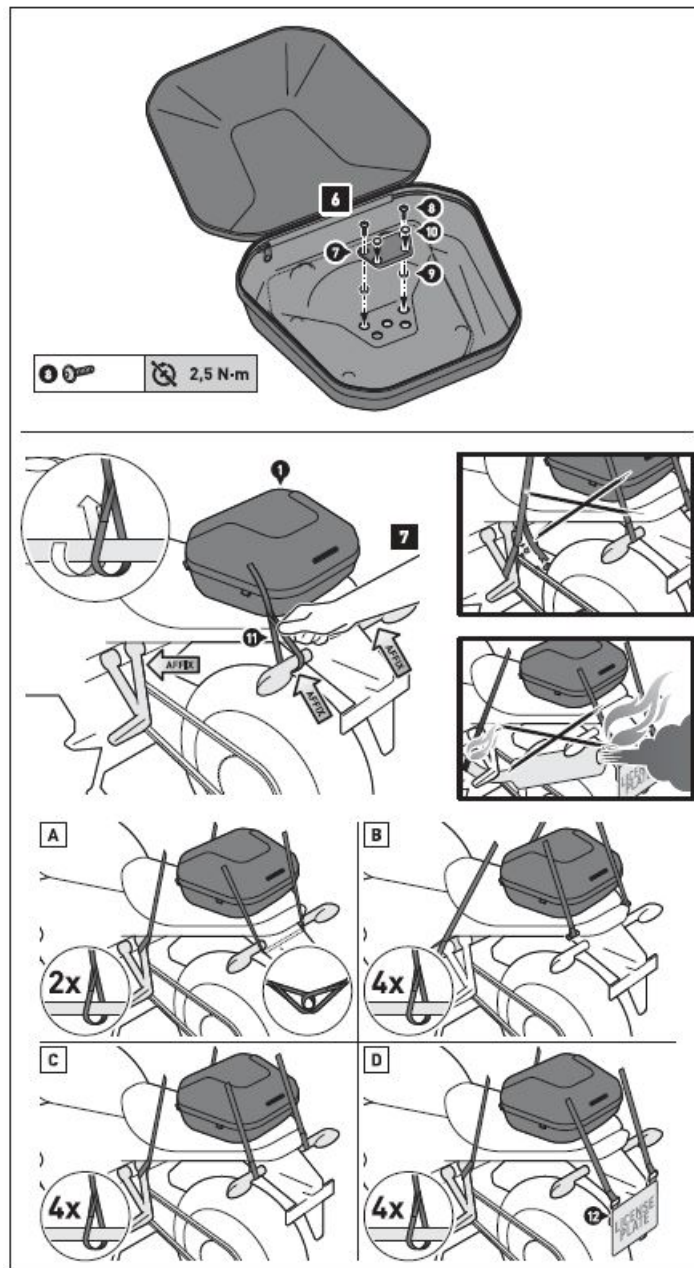
**Step [1]:** Open the lid and inner zipper of the top case 111.

**Step [2]:** Flip up the inner lining.

**Step [3]:** Attach the foam rubber base 14) under the top case 111]. Tighten the screws as specified in the parts list.

**Step [4]:** Flip down the inner lining.

**Step [5]:** Close the inner zipper of the top case I 1 J.



**Step [6]:** Attach the cover plate (7) inside the top case (11). Tighten the screws as specified in the parts list.

#### FIXATION TO THE VEHICLE

**Step [7]:** On both sides entangle TWO loop straps (11) to appropriate and reliable attachment points in the rear area of the vehicle (e.g. luggage hook etc.).

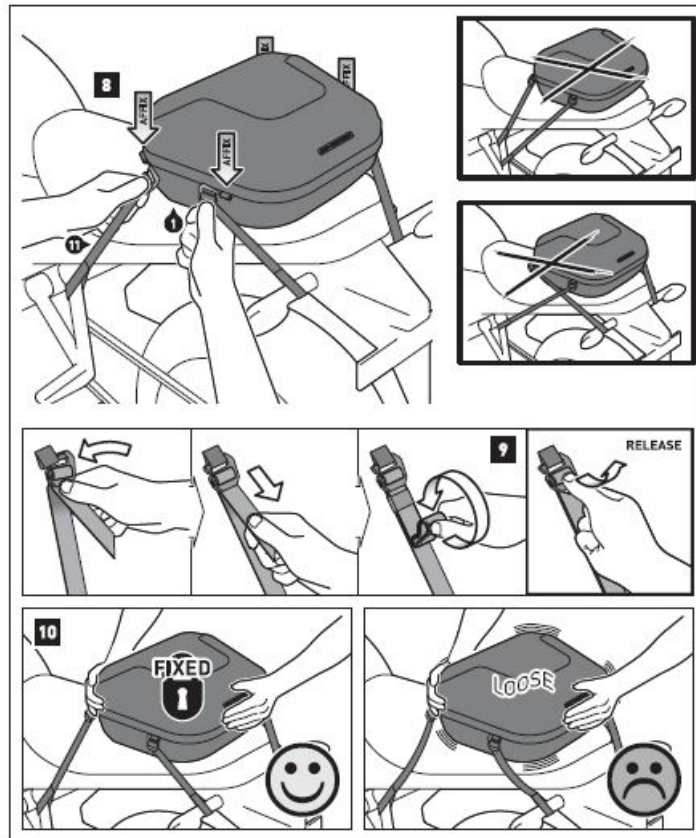
Then entangle on both sides TWO loop straps (11) to appropriate and reliable attachment points of the vehicle (e.g. vehicles frame, footrest mounts etc.).

#### FUNCTION CHECK (MUST BE OBSERVED)

##### ATTENTION:

All loop straps must not contact any hot or moving parts of the vehicle. All loop straps should also remain 15 cm away from hot parts of the vehicle and remain clear of the exhaust stream. For this reason compress the suspension fully several times with your vehicle stationary.



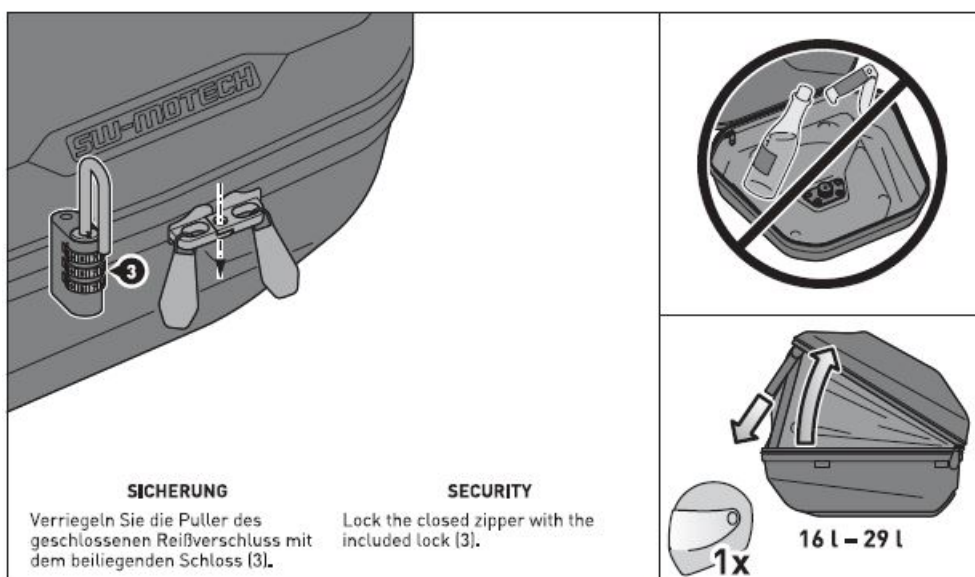
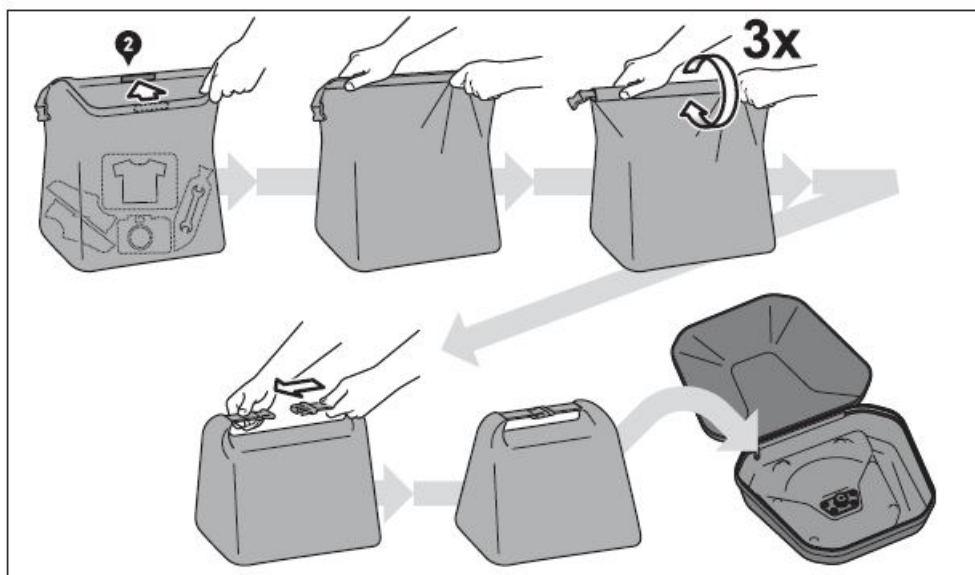


**Step [8]:** Attach the hook buckles of the loop straps [11] on both sides to the marked loops of the top case [1] as shown in the drawing. Tighten all loop straps until the top case [1] is centered and securely fastened to the vehicle.

**Step [9]:** Secure the overlength of the loop straps [6] with the rubber loops against flapping.

**Step [10]:** Check the proper fit of the top case.





## LOADING

### ATTENTION:

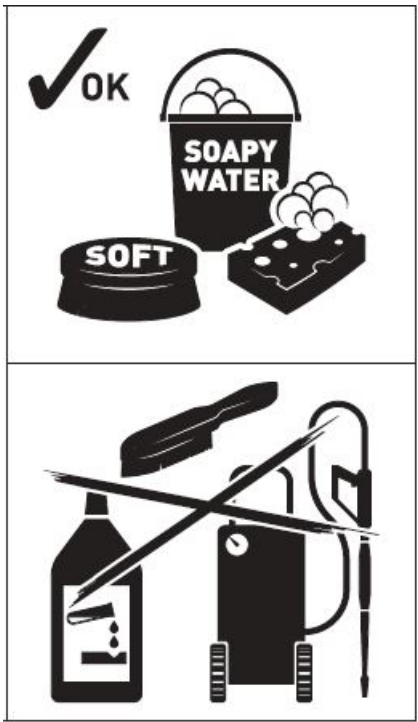
Never store pointy or sharp-edged objects, which could cause injury to persons or damage to the vehicle/top case. Volume expansion: Open the revolving zipper. For a tight fit the opening angle can be adjusted via the attached straps.



## CARE

For cleaning use ONLY a soft textile brush, cloth or sponge and warm soapy water! Rinse with clean water. Do

NOT use strong cleaning agents, rough cleaning tools or high-pressure washer! Clean the top case after riding in salty conditions, to avoid damage from salt.



**ATTENTION:**

Surface materials can experience color changes or fading when exposed to direct sunlight for extended periods of time and by environmental factors [e.g., SMOG, acid rain, etc.)! SW-MOTECH assumes no liability for this!

**Documents / Resources**

<div><div>ANBAUANLEITUNG</div><div><div>GPT.05.987.60000</div><div>SW-MOTECH</div></div></div>	<div><div><a href="#">SW-MOTECH GPT.05.987.60000 Side Case System</a> [pdf] Instruction Manual</div><div>GPT.05.987.60000 Side Case System, GPT.05.987.60000, Side Case System</div></div>
--	--