




SW-MOTECH GPT.05.987.30000 Backpack Set Instruction Manual

[Home](#) » [SW-MOTECH](#) » SW-MOTECH GPT.05.987.30000 Backpack Set Instruction Manual 

SW-MOTECH GPT.05.987.30000 Backpack Set



Contents

1 MOUNTING INSTRUCTIONS

1.1 STREET-RACK

1.2 PARTS LIST

1.3 MOUNTING

2 MOUNTING INSTRUCTIONS

2.1 Luggage rack extension for STREET-RACK

3 GENERAL INFORMATION

3.1 PARTS LIST

3.2 MOUNTING

4 MOUNTING INSTRUCTIONS

4.1 PRO Rackpack tail bag

4.2 PARTS LIST

4.3 FASTENING

4.4 LOADING AND CARE

5 Documents / Resources

6 Related Posts

MOUNTING INSTRUCTIONS

Art.-No / Item No.: **GPT.05.987.16000/B**


STREET-RACK


Thank you for choosing this premium product from SW-MOTECH.


Please carefully read and understand all instructions, safety messages and warnings in this mounting instructions prior to installation and use of this product to avoid injury.


This product was developed for vehicles in their factory setting. Compatibility with original accessory parts or other manufacturers' accessory parts is not guaranteed. Visit our webshop for additional information, such as application charts and PDF mounting instructions. Any other documents that may be required (e.g. ABE certifications), are also available for download at our webshop. Keep these mounting instructions as reference. SW-MOTECH assumes no liability for damage caused by improper installation and/or maintenance work!


SAFETY ALERT SYMBOL


 This safety alert symbol is used throughout these mounting instructions to warn of the possibility of death, bodily injury or other warnings. The words DANGER, WARNING and CAUTION are used with this safety alert symbol to convey important safety messages and information related to the installation and use of this product. These words along with the safety alert symbol mean:

 **DANGER:** Indicates a hazardous situation that, if not avoided, will result in death or serious injury!


 **WARNING:** Indicates a hazardous situation that, if not avoided, could result in death or serious injury!

 **CAUTION:** Indicates a hazardous situation that, if not avoided, could result in minor or moderate injury!

 **NOTICE:** Important information, but not death or injury related (property damage only)!

 **WARNING:** The installation and/or maintenance of this product requires advanced mechanical skills, the proper tools, and a thorough understanding of tool use and torque specifications.


For your own safety, SW-MOTECH recommends having installation and/or maintenance carried out by a qualified and certified motorcycle mechanic.

 **WARNING:** Should you choose to self-install this product, carefully and completely read all installation and safety instructions before installation and use, and follow all the directions and safety precautions given in the


mounting instructions to avoid serious injury or death. Also pay attention to all relevant information in the vehicle manual during installation and use.

IF YOU DO NOT UNDERSTAND ANY PART OF THESE INSTRUCTIONS, OR NEED CLARIFICATION OF ANY INSTRUCTION, DO NOT ATTEMPT TO MOUNT THIS PRODUCT WITHOUT CONTACTING SW-MOTECH FOR ASSISTANCE.


PREPARATION: Read the mounting instructions carefully and make sure that all items of the parts list are included.

 **CAUTION:** Make sure that your vehicle is parked safely and cannot fall over. Turn off the engine and remove the ignition key. Let the engine/exhaust cool off if necessary. Disconnect the vehicle battery when working on the electrical system. Use appropriate tools and wear always safety glasses and hand protection. Have another person help you.

MOUNTING: All parts and connections removed from the vehicle must be reinstalled in accordance with the vehicle manufacturer specifications or replaced by parts and hardware delivered by SW-MOTECH.

 **WARNING:** Secure all threads, unless otherwise specified, with medium strong strength liquid thread locker. Torque specifications undefined by SW-MOTECH must be obtained from the vehicle manufacturer or by a certified motorcycle workshop!

FUNCTION CHECK: After installation also make sure that no moving parts are obstructed, and function of the vehicle is not hindered in any way. Cables and hoses must not rub and/or be pinched.

 **WARNING:** Before starting to ride, perform a comprehensive check of all functions. After the first 50 km and then at regular intervals, check the tightening torque of all connections and the proper fit of the product. Installed accessories can change driving behavior/stability of the vehicle.

PARTS LIST

Step	No.	Item No./ Description	Part	Quantity ^b	N-m'
2	(1)	GPT.05.987. 901.01 / 902.01	Mounting Strut; left/ right	2/2	
	(2)	KES.RD.210.0300.02.GL	Plastic Plug	2/2	
	(3)	SST.0400.0220.0010.02	Rubber Stripe	2/2	
3	(4)	M8 x 90; ISO 7380	Lenshead Screw, without Flange; black	2/2	18
	(5)	Ø 8,4; DIN 125	Washer; black	2/2	
	(6)	Ø 14 / Ø 8,2 / h 8	Spacer; height 8 mm	2/2	
	(7)	M8 x 60; ISO 7380	Lenshead Screw; black	2/2	OEM
	(8)	Ø 20 / Ø 8,4 / h 25	Spacer; schwarz; height 25 mm	2/2	
4	(9)	Ø 25 / Ø 16,5 / h 11,5	Spacer; schwarz; height 11,5 mm	2/2	
5	(10)	GPT.00.619.050	Luggage Rack	1 /1	
	(11)	M8 x 25; DIN 7991	Countersunk Screw; black	4 /4	18
	(12)	Ø 8,4	Countersunk Washer; black	4 /4	

8.8	Regelgewinde / Coarse Thread Ø	M4	M5	M6	M8	M10	M12	10.9	Regelgewinde / Coarse Thread Ø	M4	M5	M6	M8	M10	M12
	Stahl FK 8.8 / Steel CL 8.8 N·m	2,8	5,5	9,6	23	46	79		Stahl FK 10.9 / Steel CL 10.9 N·m	4,1	8,1	14	34	67	115

Note: a All measurements in millimeters. b The second number indicates the total quantity of the part in the delivery.

c No torque specifications: Use the torque defined by vehicle manufacturer! The standard torque in this table can be used as long as it is within the vehicle manufacturer's specifications.



MOUNTING

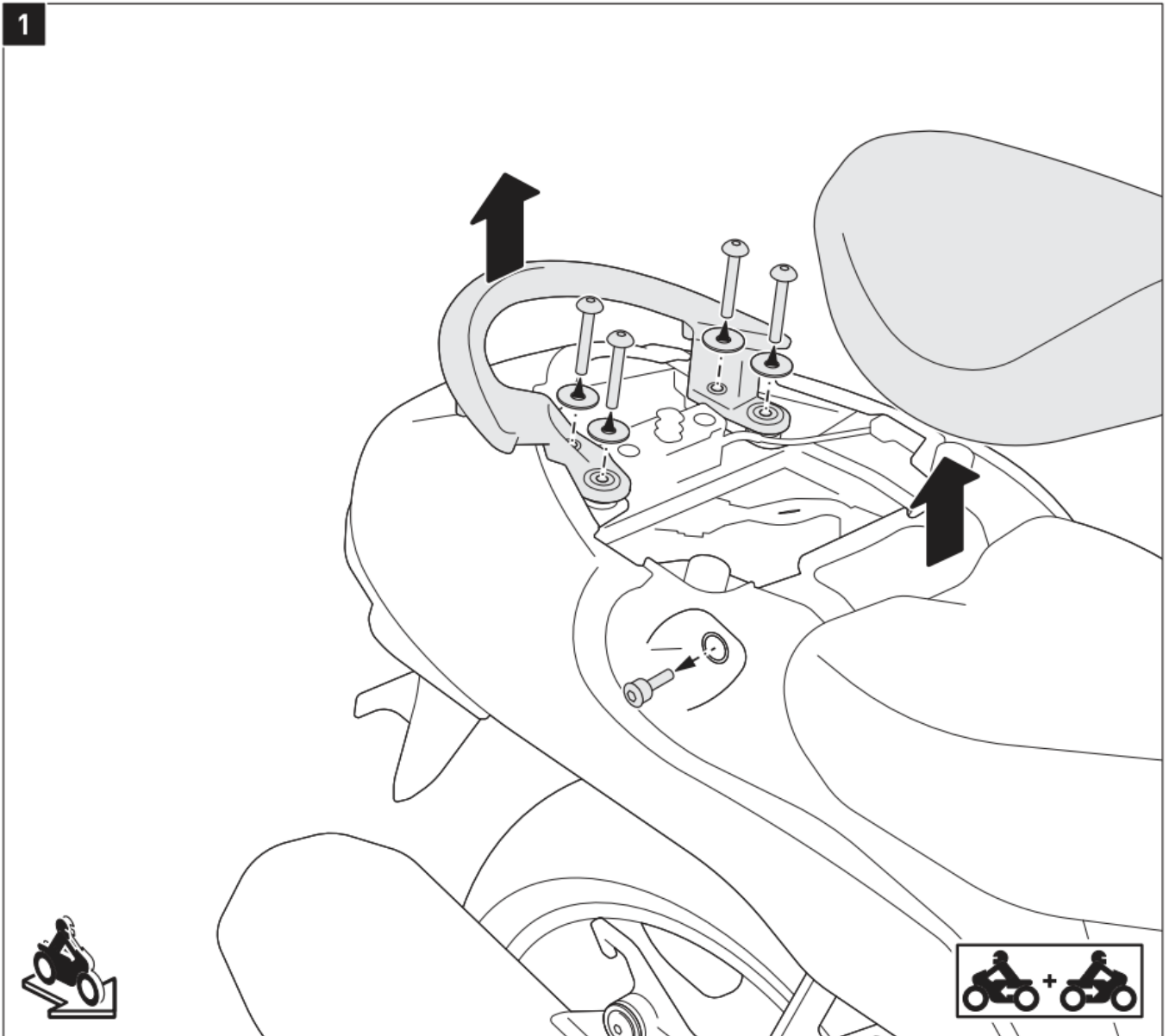
! WARNING: Always wear eye and hand protection!

! WARNING: Always use appropriate tools!

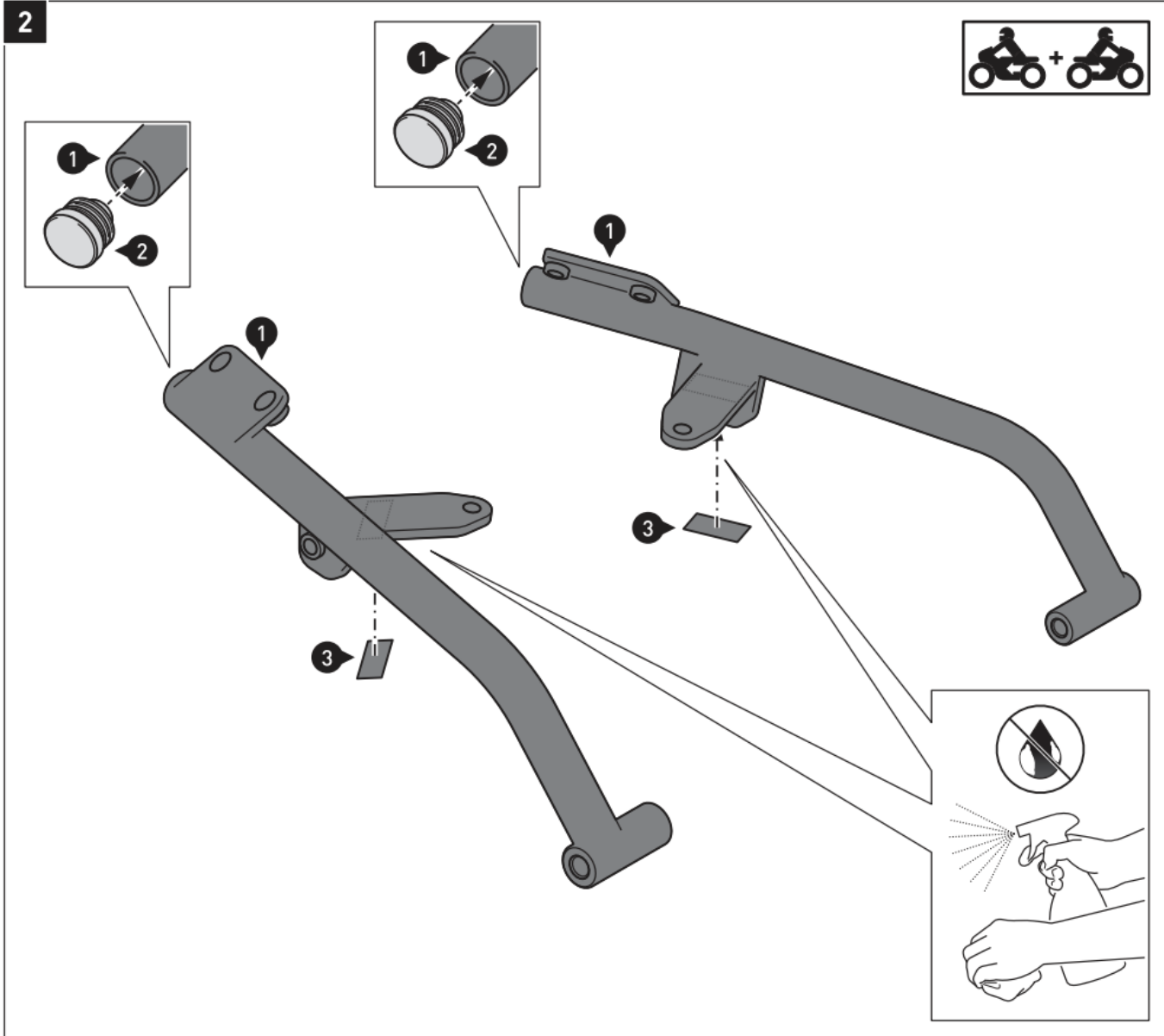
Remove the passenger seat from the vehicle.

Then remove on **both sides** the shown screws and the passenger grip from the vehicle.

1



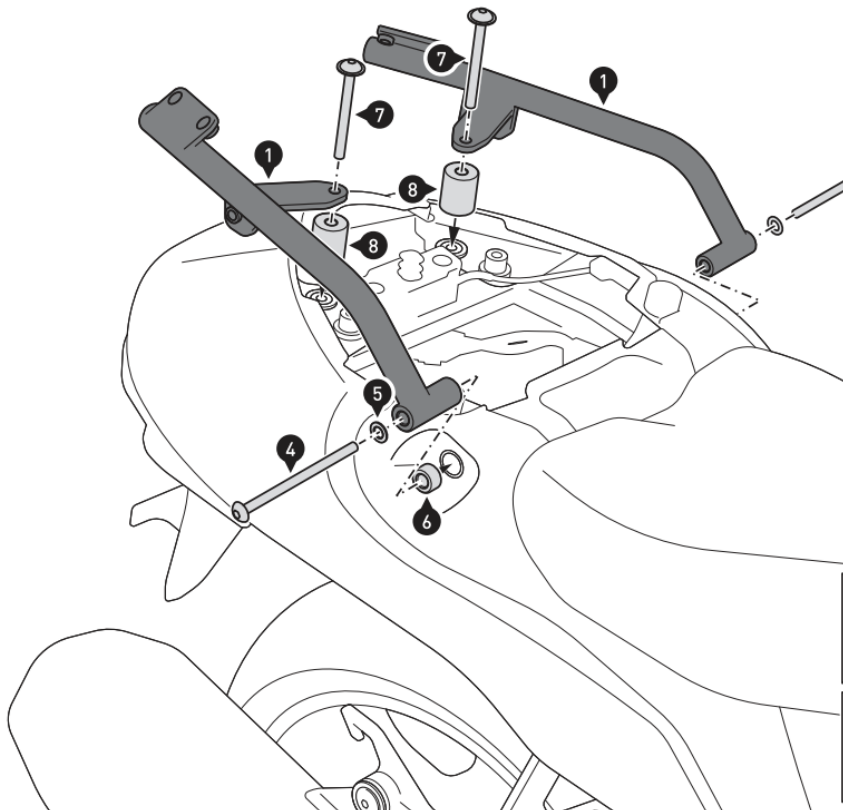
Insert the plastic plugs (2) into the ends of the mounting struts (1), as shown in the detail drawing.
Clean the marked areas of the mounting struts (1) thoroughly of grease and dirt residues.
Then affix the rubber stripes (3) to the marked areas of the mounting struts (1).



Attach the mounting struts (1) on both sides to the vehicle.

⚠ WARNING: Use liquid thread locker!
Do not fully tighten the screws yet.

⚠ NOTICE: If the SW-MOTECH side carrier is mounted at the same time, the parts (4) and (5) are not required.
Attach instead the parts of the side carrier.

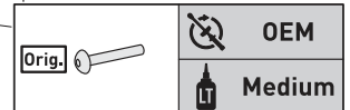
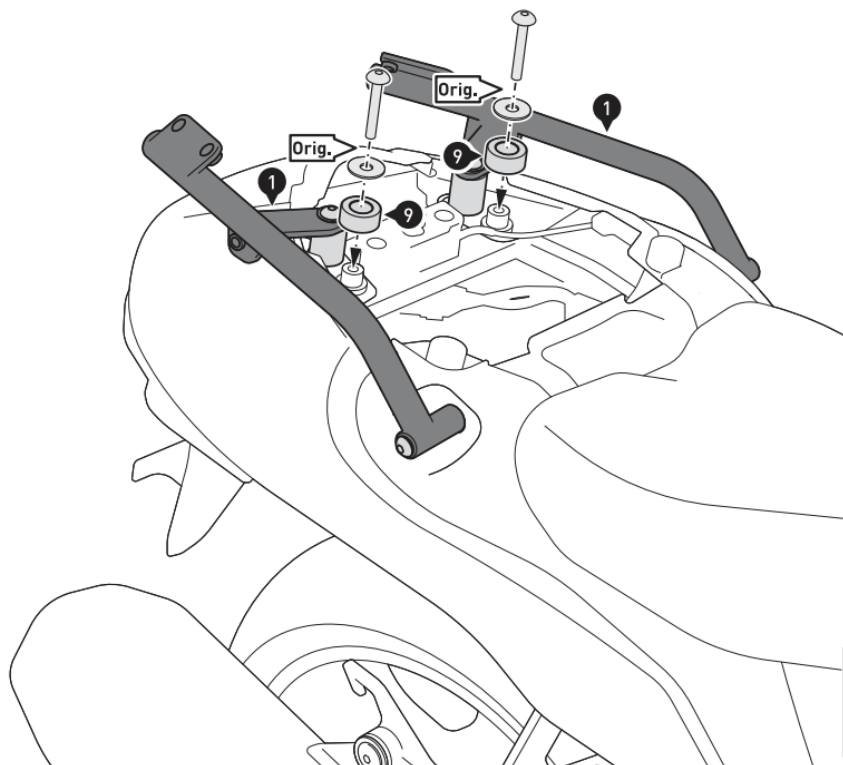


	 Medium
	 Medium

Attach the spacers (9) with the original screws and washers to the vehicle (Orig.).

⚠ WARNING: Use liquid thread locker!

Tighten the original screws (Orig.) with the manufacturers' specified torque.

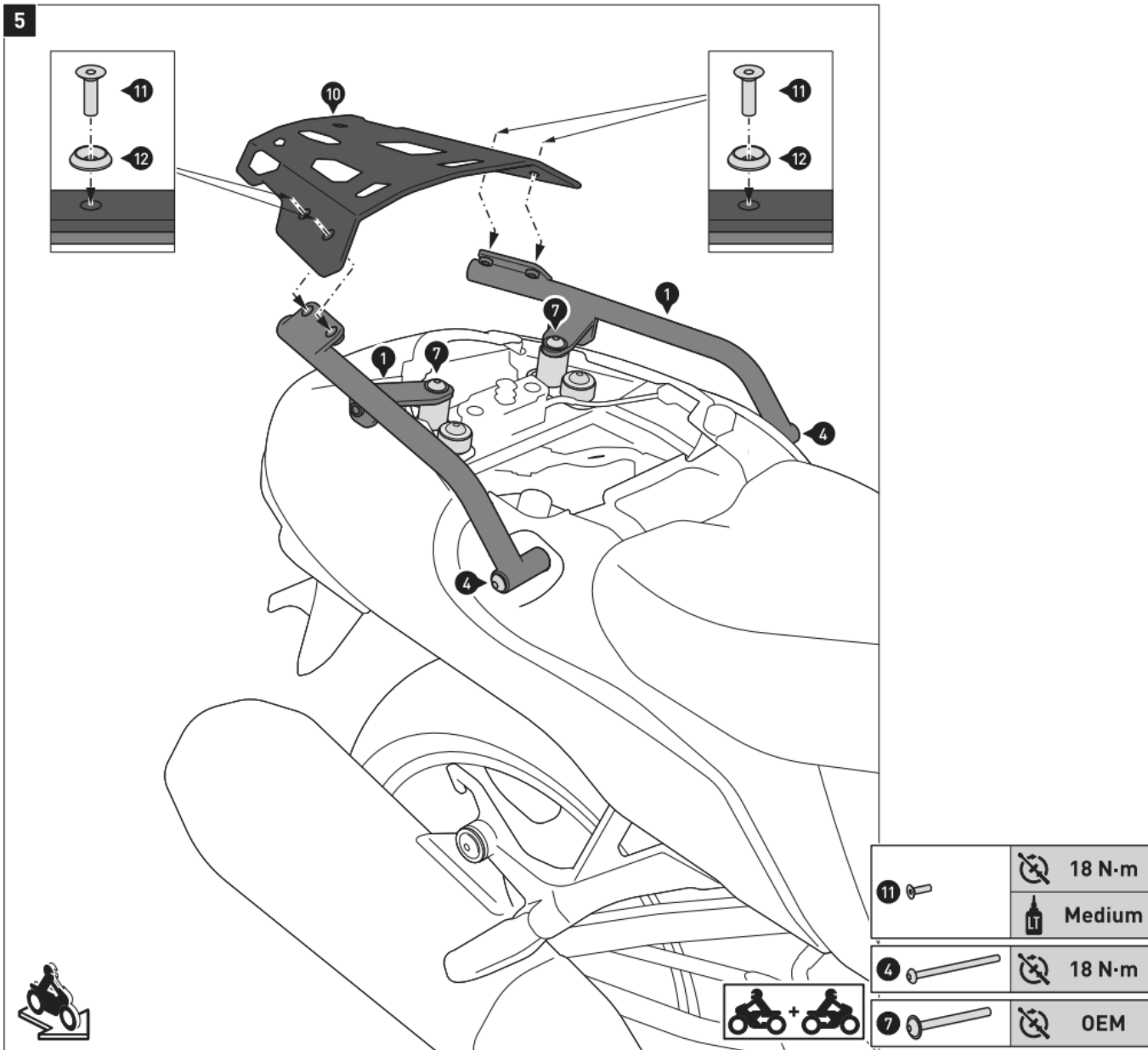


Attach the luggage rack (6) onto the mounting struts (1).

⚠ WARNING: Use liquid thread locker!

Once all parts are evenly positioned without excess tension, tighten the screws (4) and (11) as specified. Tighten the screws (7) with the manufacturers' specified torque.

Reattach the passenger seat to the vehicle.



PRODUCT SPECIFIC INFORMATION

Maximum Load	Maximum Speed
 7.5 KG (16.5 lbs)	 130 km/h (80 mph)

MOUNTING INSTRUCTIONS

Art.-No / Item No.: **GPT.00.152.54500/B**

Luggage rack extension for STREET-RACK

Thank you for choosing this premium product from SW-MOTECH.

Please visit our webshop for additional information, such as application charts and PDF mounting instructions. Any other documents that may be required (e.g. ABE certifications), are also available for download at our webshop. Installation and/or maintenance of this product require good technical understanding! For your own safety SW-MOTECH recommends having installation and/or servicing carried out by a specialist workshop! SW-MOTECH assumes no liability for damage caused by improper installation and/or maintenance work!

Carefully follow all the directions given in the mounting instructions and pay attention to all relevant information in the vehicle manual during assembly.

Nonconformance can lead to vehicle damage or even endanger the driver! These mounting instructions are written based on our current state of knowledge. Legal requirements for accuracy do not exist.

This product was developed for vehicles in their factory setting. Compatibility with original accessory parts or other manufacturers' accessory parts is not guaranteed. Furthermore, BEFORE installing this product, make sure that all moving parts (e.g. the chain) are in the original state of maintenance.

Installed accessories can change the driving behaviour and/or stability of your vehicle.

GENERAL INFORMATION

Observe the country-specific regulations concerning vehicle registration/ operation as well as TUV regulations if applicable. If required, register installed parts in the vehicle documents through an appropriate inspection authority.

PREPARATION: Read the mounting instructions carefully and make sure that all items of the parts list are included. Make sure that your vehicle is parked safely and cannot fall over. Turn off the engine and remove the ignition key.

Let the motor/exhaust cool off if necessary. Disconnect the vehicle battery when working on the electrical system. Use appropriate tools. Have another person to help you.

MOUNTING: All parts and connections removed from the vehicle must be reinstalled in accordance with the vehicle manufacturers' specifications or replaced by parts delivered by **SW-MOTEC**. **Secure all threads, unless otherwise specified, with medium-strength liquid thread locker.**

Torque specifications undefined by SW-MOTE CH must be obtained from the vehicle manufacturer or by a specialist workshop!

FUNCTION CHECK: After installation make sure that all parts and connections previously removed are properly replaced. Also make sure that no moving parts are obstructed and no function of the vehicle is hindered in any way. Cables and hoses must not rub and/or be pinched. Before starting to ride, perform a comprehensive check of all functions. After the first 50 km and then at regular intervals, check the tightening torque of all screw connections and the proper fit of the product.

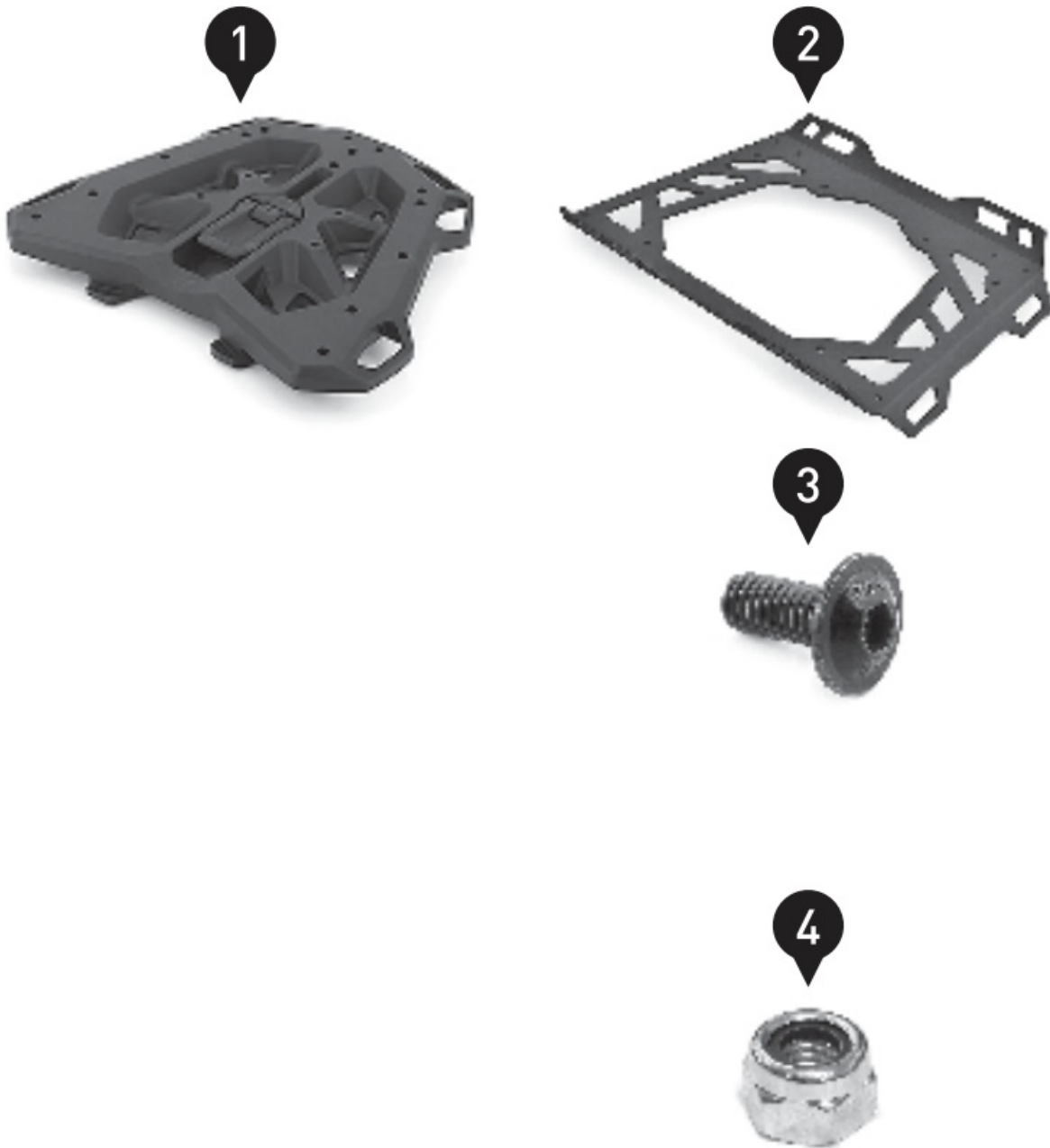
PARTS LIST

Step	No.	Item No./ Description	Part	Quantity ^b	N-m'
	(1)	GPT.00.152.502	Adapter Plate	1 / 1	
	(2)	GPT.00.152.048	Luggage Rack Extension	1 / 1	9
	(3)	M6 x 14; ISO 7380	Lenshead Screw; black	4 / 4	
	(4)	M6; DIN 985	Lock Nut	4 / 4	

8.8	Regelgewinde / Coarse Thread	Ø	M4	M5	M6	M8	M10	M12	10.9	Regelgewinde / Coarse Thread	Ø	M4	M5	M6	M8	M10	M12
	Stahl FK 8.8 / Steel CL 8.8	N-m	2,8	5,5	9,6	23	46	79		Stahl FK 10.9 / Steel CL 10.9	N-m	4,1	8,1	14	34	67	115

* All measurements in millimeters. • ** The second number indicates the total quantity of the part in the delivery.

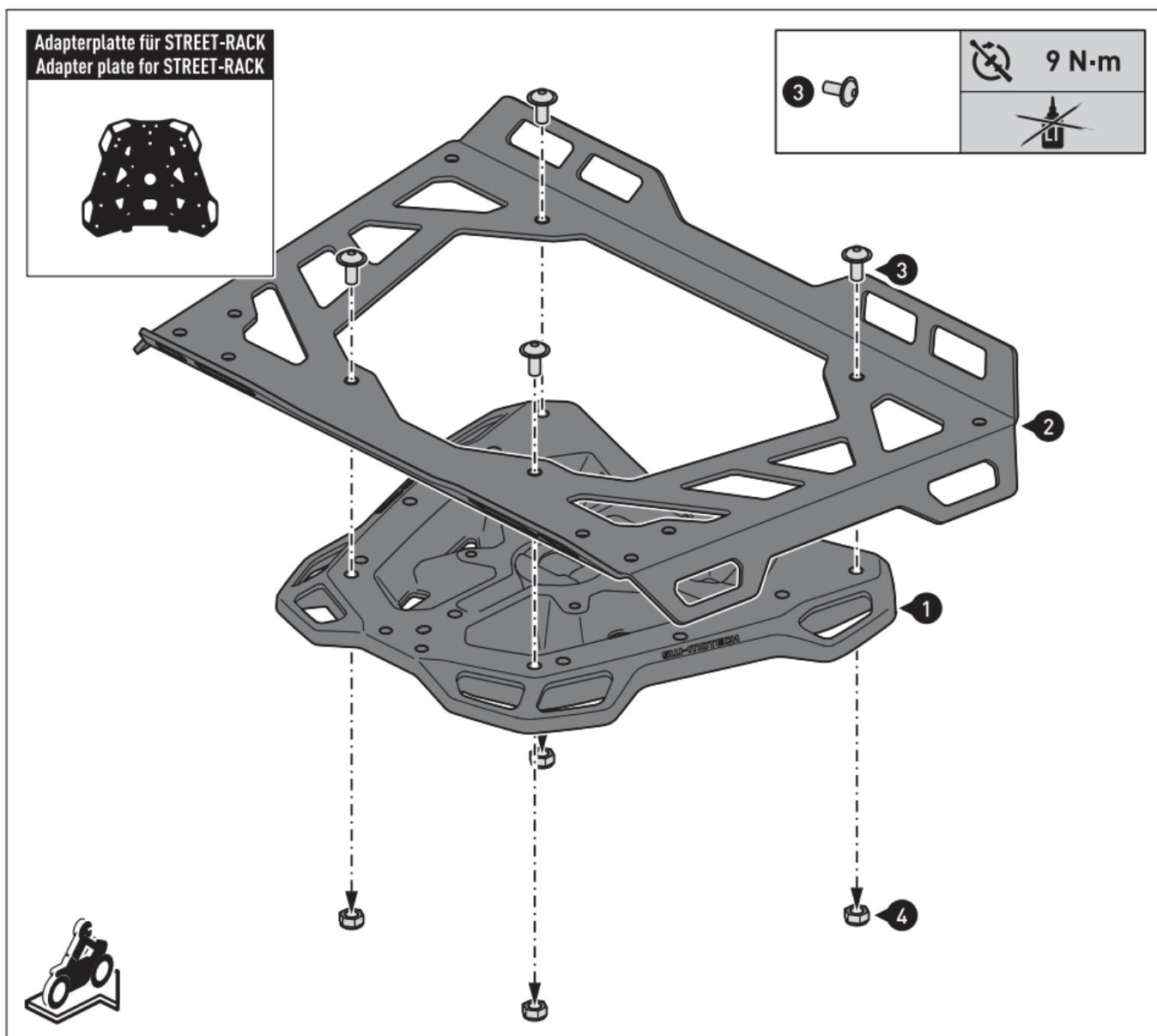
*** **No torque specifications: Use the torque defined by vehicle manufacturer'!** The standard torque in this table can be used as long as it is within the vehicle manufacturer's specifications.



MOUNTING

Adapter plate for STREET-RACK

Attach the shown parts to the adapter plate for STREET-RACK [1].
Tighten the screws as specified in the parts list.



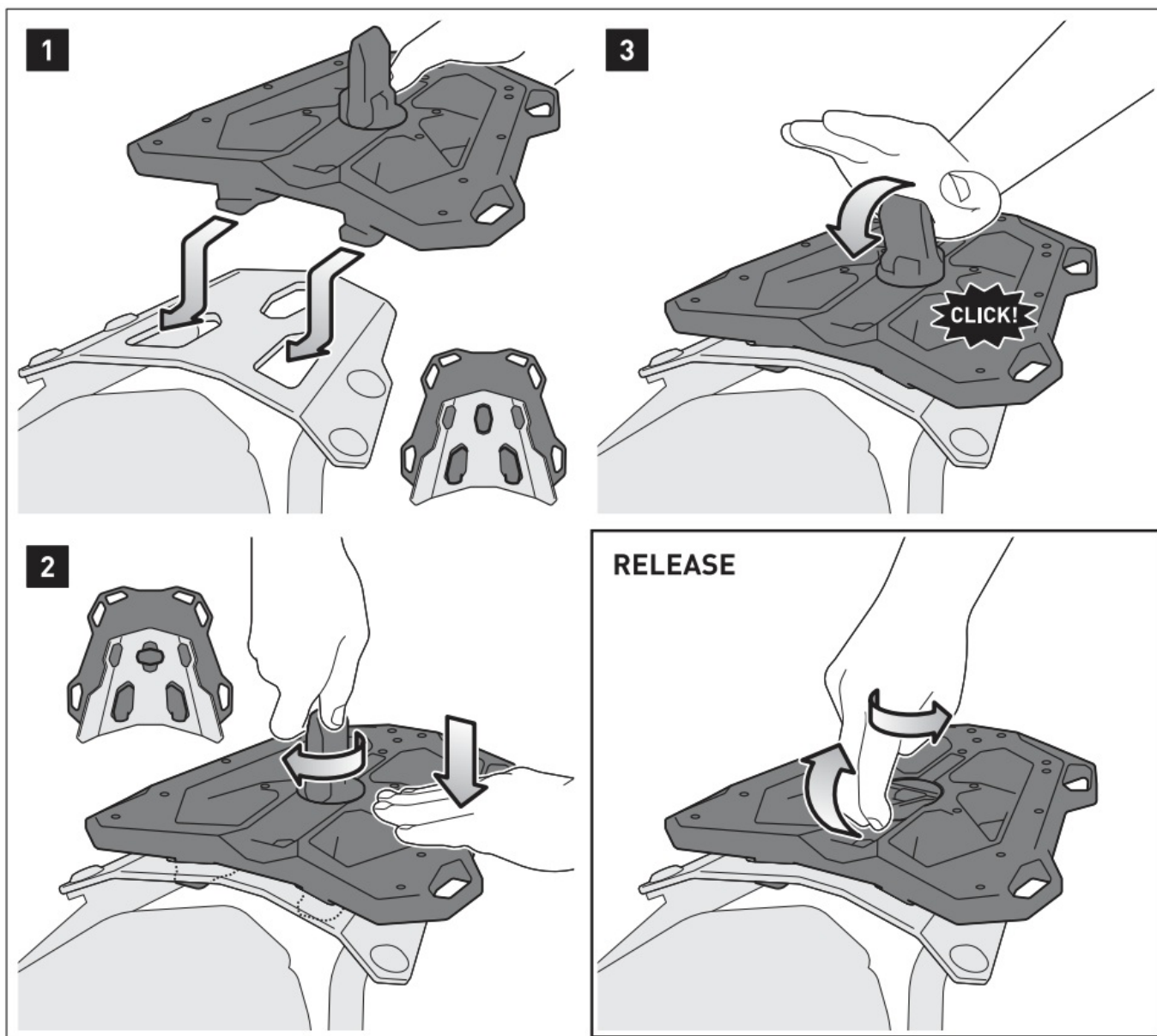
Mounting the adapter plate on the STREET-RACK.

Step [1]: Slide the adapter plate [1] with the two hooks into the holes of your STREET-RACK [sold separately].

Step [2]: Press the adapter plate [1] slightly downwards and turn the fastener 90 degrees until it fits into place.

Step [3]: Finally, press the lock firmly down as shown in the drawing.

To **release** the adapter plate, simply pull the fastener upwards and turn it to the starting position.



MOUNTING INSTRUCTIONS

Art.-No / Item No.: **BC.HTA.00.305.3000***

PRO Rackpack tail bag

Thank you for choosing this premium product from SW-MOTEC.

Please visit our webshop for additional information, such as application charts and PDF mounting instructions. Any other documents that may be required (e.g. ABE certifications), are also available for download at our webshop.

Installation and/or maintenance of this product require good technical understanding! For your own safety SW-MOTEC recommends having installation and/or servicing carried out by a specialist workshop!

SW-MOTEC assumes no liability for damage caused by improper installation and/or maintenance work!

Carefully follow all the directions given in the mounting instructions and pay attention to all relevant information in the vehicle manual during assembly.

Nonconformance can lead to vehicle damage or even endanger the driver!

These mounting instructions are written based on our current state of knowledge. Legal requirements for accuracy do not exist.

This product was developed for vehicles in their factory setting. Compatibility with original accessory parts or other manufacturers' accessory parts is not guaranteed. Furthermore, BEFORE installing this product, make sure that all moving parts (e.g. the chain) are in the original state of maintenance.

Installed accessories can change the driving behaviour and/or stability of your vehicle.

GENERAL INFORMATION

Observe the country-specific regulations concerning vehicle registration/ operation as well as TOV regulations if applicable. If required, register installed parts in the vehicle documents through an appropriate inspection authority.

PREPARATION: Read the mounting instructions carefully and make sure that all items of the parts list are included. Make sure that your vehicle is parked safely and cannot fall over. Turn off the engine and remove the ignition key.

Let the motor/exhaust cool off if necessary. Disconnect the vehicle battery when working on the electrical system. Use appropriate tools. Have another person to help you.

FUNCTION CHECK: This is a universal product. For this reason make sure BEFORE the first use, that the product can be fixed properly and used without problems with your vehicle type. After fixation also make sure that no moving parts are obstructed and the function of the vehicle is not hindered in any way.

Lamps as taillight and turn signals must not be limited in their function. Cables and hoses must not rub and/or be pinched. Before starting to ride, perform a comprehensive check of all functions.


All components of the product must not contact any hot or moving parts of the vehicle. All parts should also remain 5 cm away from hot parts of the vehicle and remain clear of the exhaust stream. For this reason compress the suspension fully several times with your vehicle stationary.

ATTENTION: Before riding and at each stop (every 200 km) check proper fixation of the product!

PRODUCT SPECIFIC INFORMATION

ATTENTION: Riding with this product may affect the motorcycles driving and braking performance! Cornering and ground clearance can be reduced by using this product!

ATTENTION: Modifications will void any warranty.

Maximum Load	Maximum Speed
 10 KG (22 lbs)	 130 km/h (80 mph)



ATTENTION

NOT FOR OFFROAD-USE!

PARTS LIST

Step	No.	Item No./ Description	Part	Quantity ^b	N-m'
11	(1)		Tail Bag	1 / ₁	
	(2)	BC.ZU B.00.122.30000	Waterproof Innerbag	1 / ₁	
	(3)	BC.ZU B.00.041.30000	Shoulder Strap	1 / ₁	
1	(4)	BC.ZU B.00.128.30000	Loop Strap Set; 4 pieces	1 / ₁	
	(5)	LSF.350.250	Protection Foil; 250 x 350 mm	1 / ₁	
1	(6)	BC.ZU B.00.120.30000	Velcro Strap Set; loop side; 2 pieces	1 / ₁	
	(7)	BC.ZUB.00.121.30000	Velcro Strap Set; hook side; 2 pieces	1 / ₁	

8.8	Regelgewinde / Coarse Thread Ø							10.9	Regelgewinde / Coarse Thread Ø								
	M4	M5	M6	M8	M10	M12	M4		M5	M6	M8	M10	M12				
Stahl FK 8.8 / Steel CL 8.8		N·m	2,8	5,5	9,6	23	46	79	Stahl FK 10.9 / Steel CL 10.9		N·m	4,1	8,1	14	34	67	115



FASTENING

FIXED ON THE LUGGAGE RACK EXTENSION

Step [1]: Loop two loop straps 14) together.

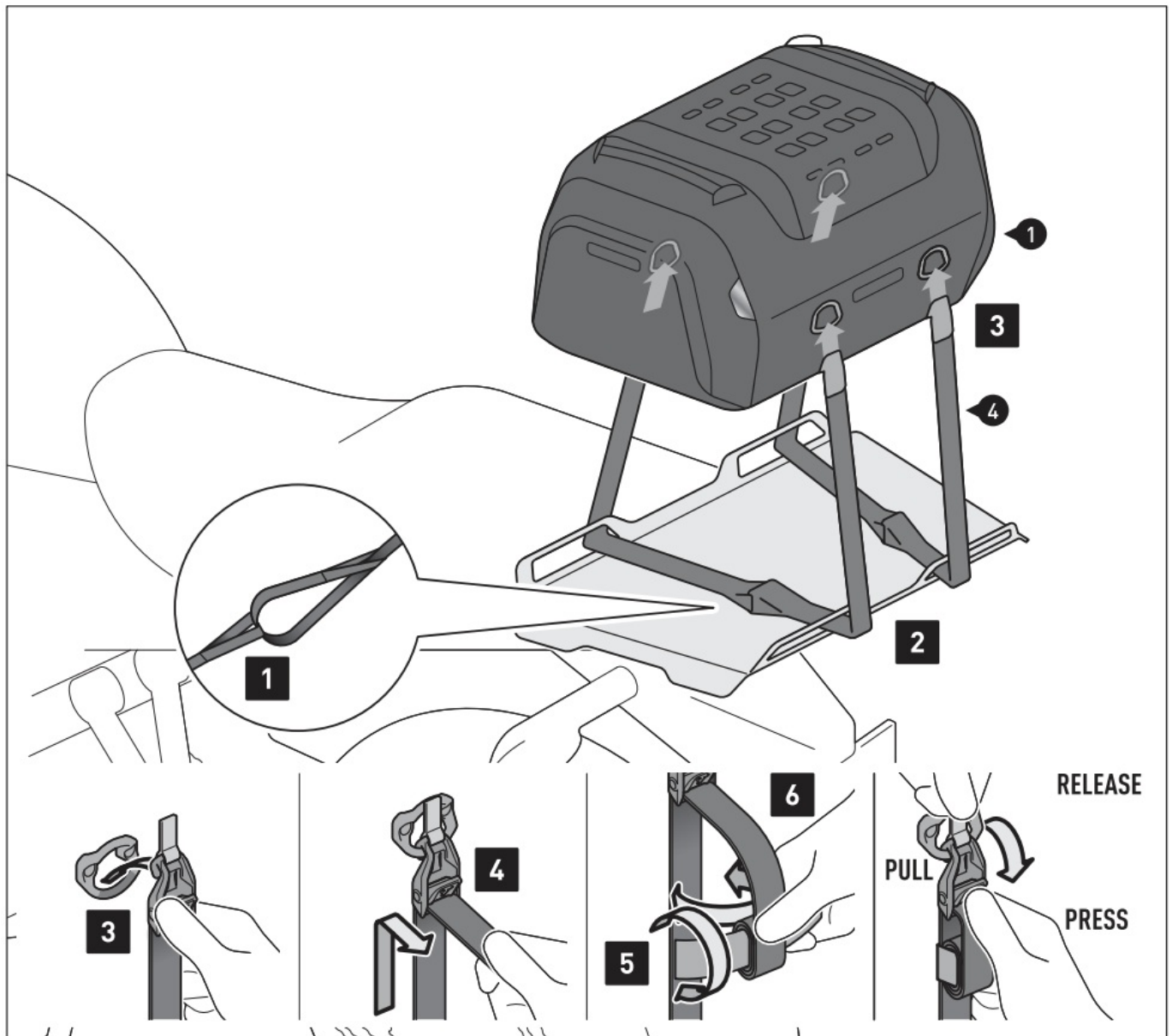
Step [2]: Guide the loop straps 14) through the shown openings of the example luggage rack extension.

Step [3]: Hook the cam-hooks of the loop straps 14) onto the D-rings of the tail bag 11).

Step [4]: Pull the loop straps 14) on all four cam-hooks tight.

Step [5]: Roll up the excess lengths of the loop straps 14) ...

Step [6]: ... and fix it with the velcro straps.



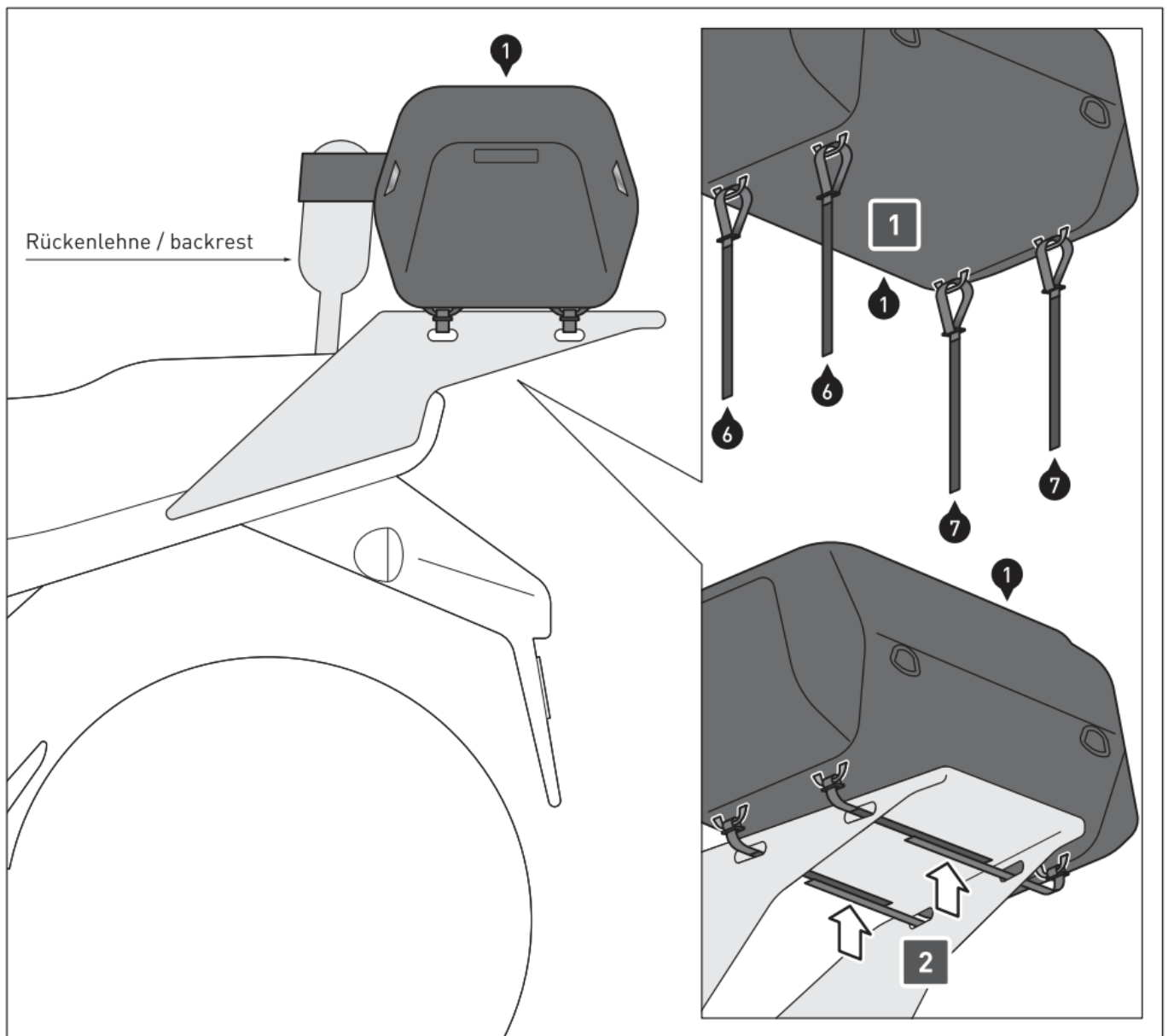
FASTENING TO THE LUGGAGE RACK

Step [1]: Loop the velcro straps 16) and 17) onto the loop at the bottom of the tail bag 11). Make sure that the loop and hook sides can be easily attached.

Place the tail bag (11) on the luggage rack.

Step [2]: Fasten the tail bag 11 I to your luggage rack with the velcro straps 16) and 171. Make sure that the tail bag 11 I is fastened in such a way that it cannot slip while driving.

OPTIONAL: The velcro strap sewn on the front can be looped around the backrest to provide additional support

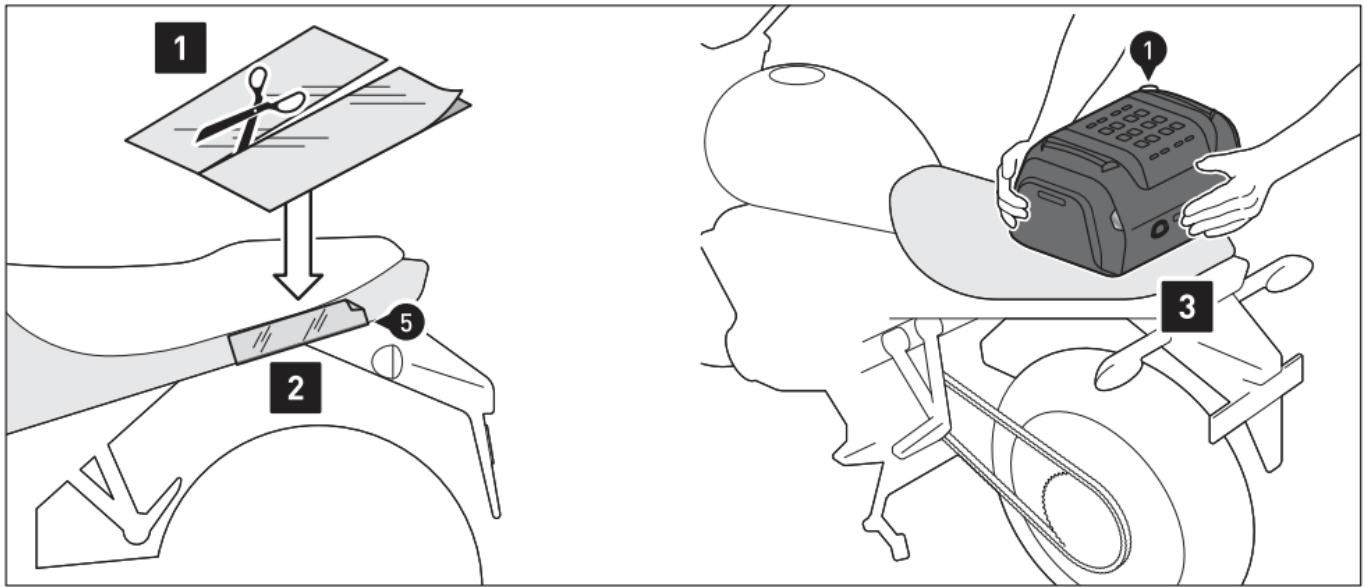


The luggage rack and the vehicle are examples.

UNIVERSAL FASTENING:

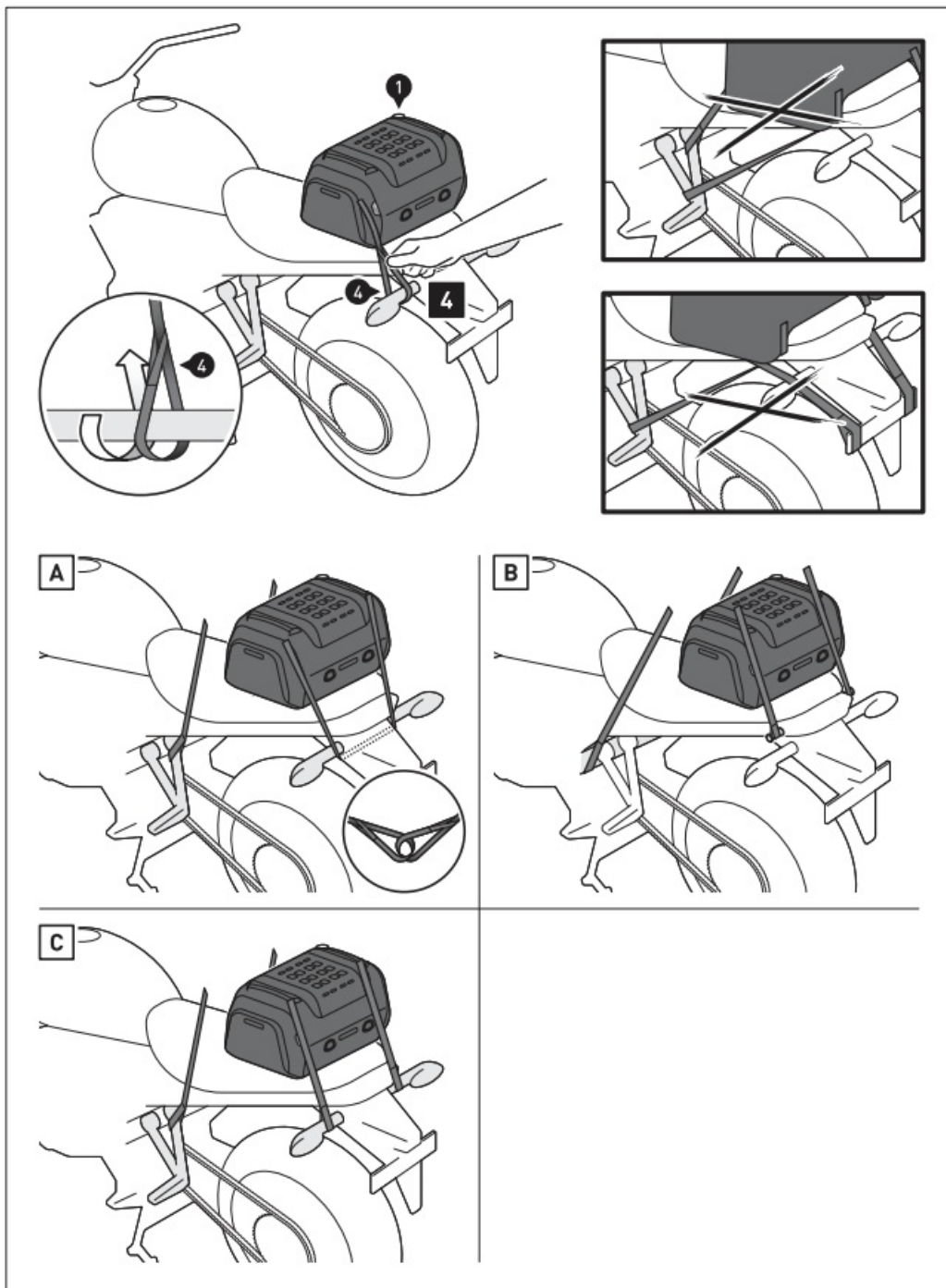
Step [1] & [2]: Cover the contact surfaces of the tail bag [1] with the protection foil [5]. Clean the surface before applying the protection foil.

Step [3]: Place the tail bag [1] on the rear of the vehicle.



Step [4]: Entangle the loop straps [4] to FOUR suitable and loadable fastening points to the vehicle, as shown in the example illustrations [A] to [C] [e.g. vehicles frame, footrest mounts, luggage hook etc.).

ATTENTION: The fastening points must be chosen so that the tail bag (1) is secured against slipping! To do this, tension the tail bag (1) to the front at the two front fastening points and to the rear at the two rear fastening points!



Step [5]: Hook the cam-hooks of the FOUR loop straps [14] onto the D -rings of the tail bag [11].

Step [6]: Pull the loop straps [14] on all four cam-hooks tight until the tail bag [11] is centered and securely fastened to the vehicle.

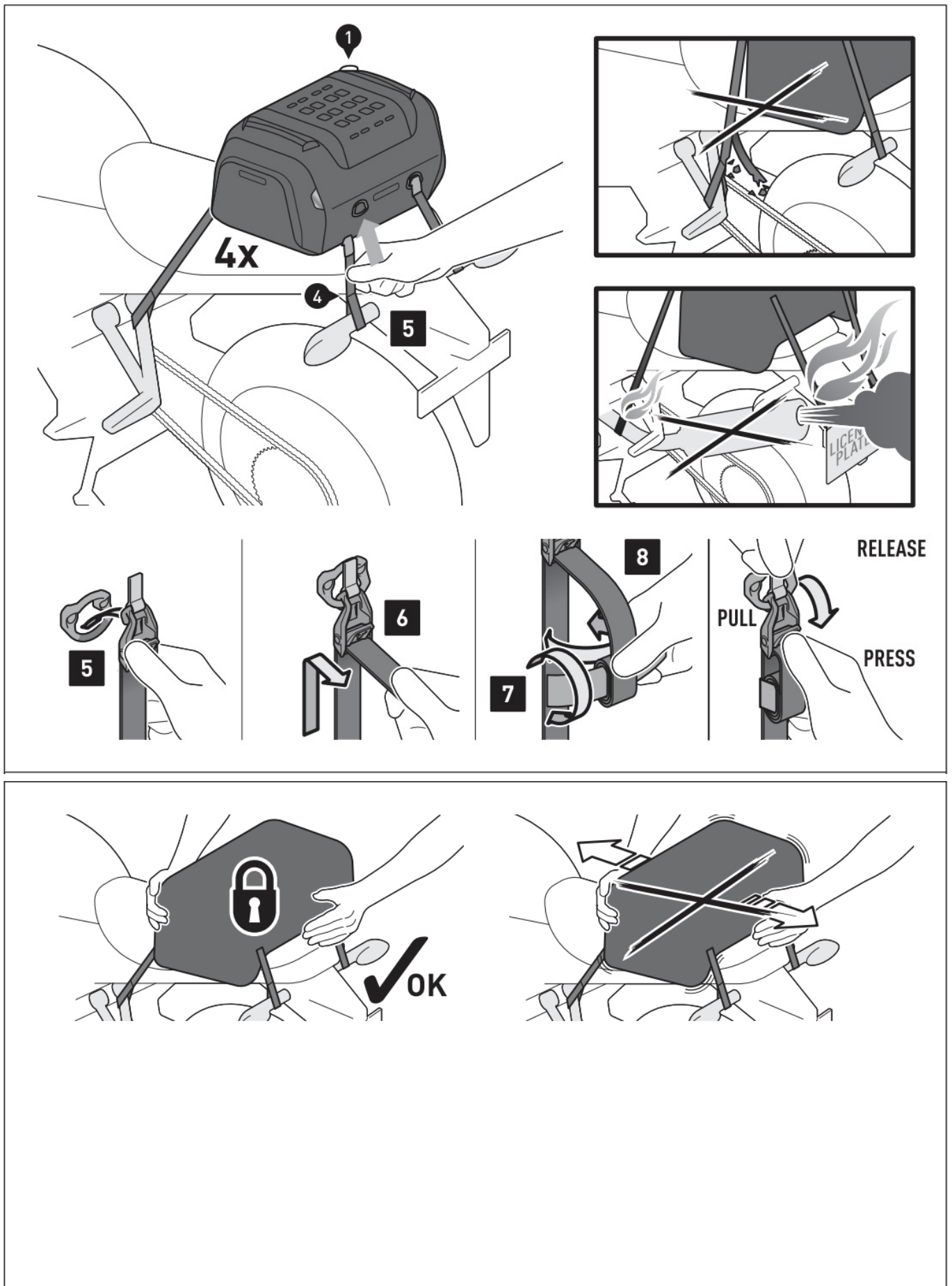
Step [7]: Roll up the excess lengths of the loop straps [14]

Step [8]: and fix it with the velcro straps.

ATTENTION: All components of the tail bag must not contact any hot or moving parts of the vehicle. All parts should also remain 5 cm away from hot parts of the vehicle and remain clear of the exhaust stream.

ALL FASTENING POSSIBILITIES

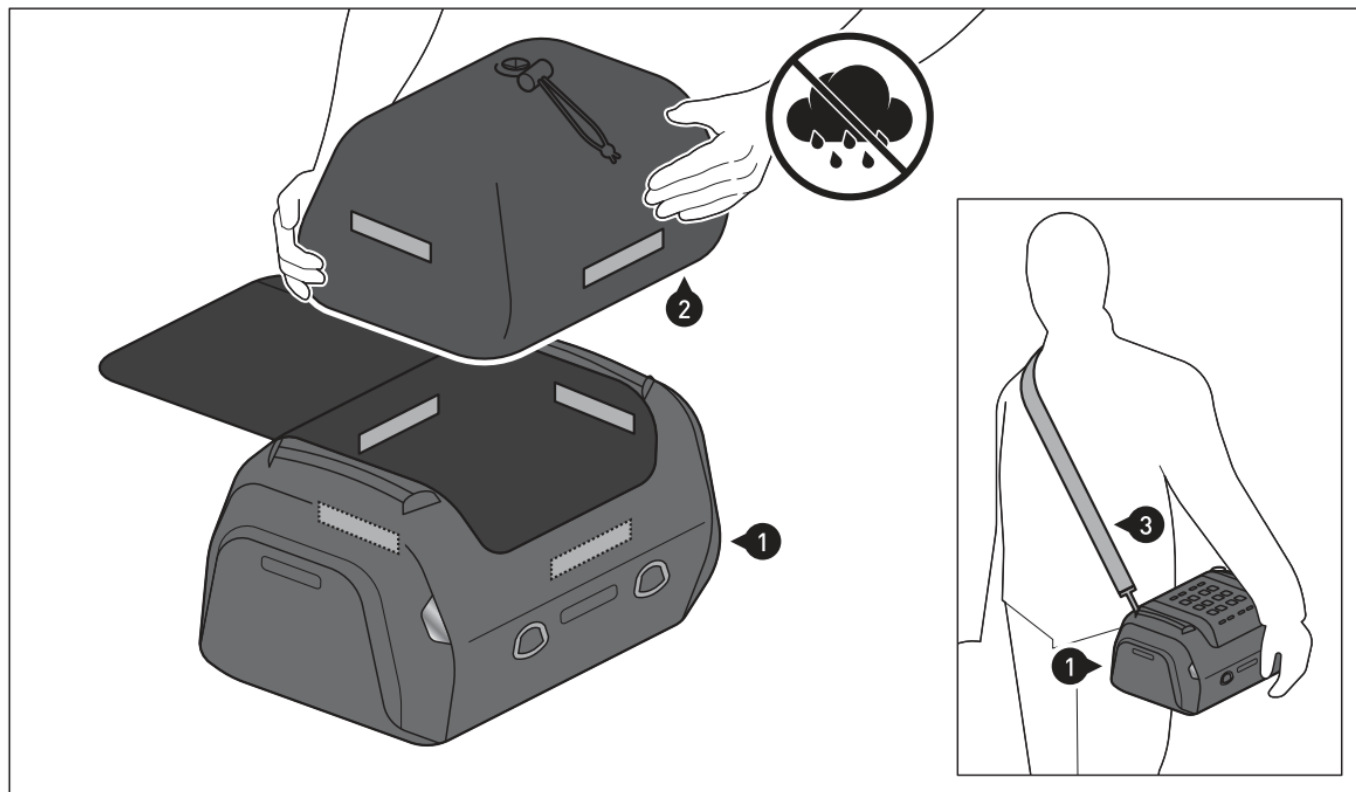
ATTENTION: Before riding and at each stop (every 200 km) check the proper fixation of the tail bag (1)



LOADING AND CARE

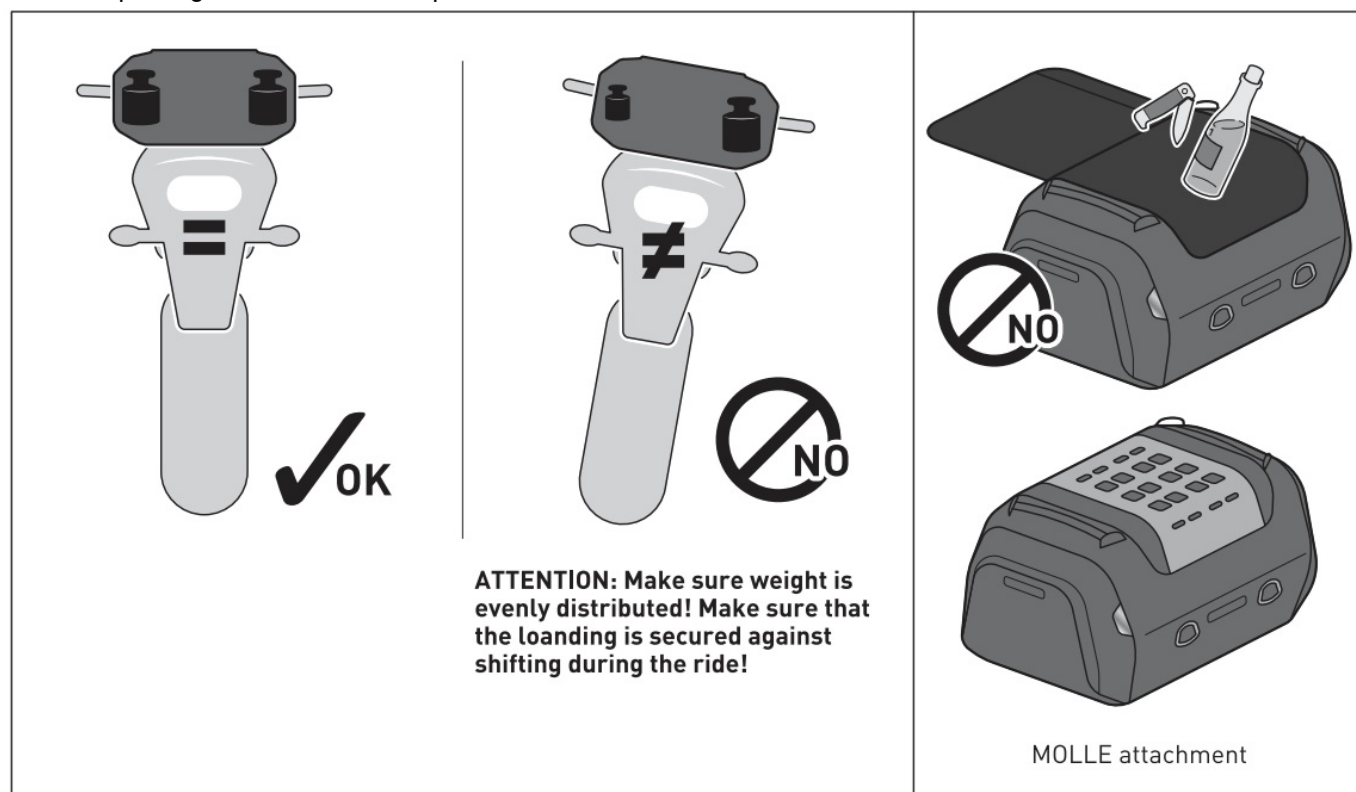
ATTENTION: Always use the included waterproof inner bag (2) to protect your luggage from moisture! Fasten the waterproof inner bag (2) to the velcro patch on the inside.

Additionally protect sensitive luggage (e.g., electronic equipment) from moisture with a plastic bag.



LOADING: Never store pointy or sharp-edged objects, which could cause injury to persons or damage to the vehicle/product!






ONLY loop assigned SW-MOTECH products to the MOLLE attachment!



CARE: For cleaning use ONLY a soft textile brush, cloth or sponge and warm soapy water! Rinse with clean water.

Do NOT use strong cleaning agents, rough cleaning tools or high pressure washer!

Clean the product after riding in salty conditions, to avoid damage from salt.

   <p>ATTENTION: Surface materials can experience color changes or fading when exposed to direct sunlight for extended periods of time and by environmental factors (e.g., SMOG, acid rain, etc.)! SW-MOTECH assumes no liability for this.</p>	<div data-bbox="1045 100 1428 436">  </div> <div data-bbox="1061 481 1444 840">  </div>
------------------------------------------------------------------------------------------------------------------------------------------------------------------------------------------------------------------------------------------------------------------------------------------------------------------------------------------------------------------------------------------------------------------------------------------------------------------------------------------------------------	---------------------------------------------------------------------------------------------------------------------------------------------------------------------------------------------------------------------------------------------------------------

SW-MOTECH GmbH & Co. KG

Ernteweg 7-10

35282 Rauschenberg

Germany

Tel. / phone+ 49 (0)6425 / 8168 – 050

Fax/ fax+ 49 (0)6425 / 8168 – 10

info@sw-motech.com

www.sw-motech.com



SW-MOTECH®

Documents / Resources

<p>ANBAUANLEITUNG</p> <p>GPT.05.987.30000</p> <p>GPT.05.987.30000 GPT.05.987.30000 GPT.05.987.30000</p> <p>SW-MOTECH</p>	<p>SW-MOTECH GPT.05.987.30000 Backpack Set [pdf] Instruction Manual GPT.05.987.30000 Backpack Set, GPT.05.987.30000, Backpack Set</p>
----------------------------------------------------------------------------------------------------------------------------------	-----------------------------------------------------------------------------------------------------------------------------------------------------------