



SW-MOTECH GPT.01.950.70000 Trax ADV Top Case System Instruction Manual

[Home](#) » [SW-MOTECH](#) » SW-MOTECH GPT.01.950.70000 Trax ADV Top Case System Instruction Manual 

*SW-MOTECH GPT.01.950.70000 Trax ADV Top Case
System Instruction Manual*

ANBAUANLEITUNG

mounting instructions

GPT.01.950.70000/B
contains

GPT.01.950.19000/B

GPT.00.152.35100/B

ALK.00.733.15000/B

ALK.00.165.16503



Contents

- [1 MOUNTING INSTRUCTIONS](#)
- [2 PRODUCT SPECIFIC INFORMATION](#)
- [3 PARTS LIST](#)
- [4 MOUNTING](#)
- [5 MOUNTING INSTRUCTIONS](#)
- [6 LID AND LOCK CYLINDER SET](#)
- [7 LID LIMITER](#)
- [8 QUICK RELEASE FASTENER](#)
- [9 Documents / Resources](#)
- [10 Related Posts](#)

MOUNTING INSTRUCTIONS

GENERAL INFORMATION

Observe the country-specific regulations concerning vehicle registration/ operation as well as TUV regulations if applicable. If required, register installed parts in the vehicle documents through an appropriate inspection authority.

PREPARATION: Read the mounting instructions carefully and make sure that all items of the parts list are included. Make sure that your vehicle is parked safely and cannot fall over. Turn off the engine and remove the ignition key.

Let the motor/exhaust cool off if necessary. Disconnect the vehicle battery when working on the electrical system. Use appropriate tools. Have another person to help you.

MOUNTING: All parts and connections removed from the vehicle must be reinstalled in accordance with the vehicle manufacturers' specifications or replaced by parts delivered by SW-MOTECH. Secure all threads, unless otherwise specified, with medium-strength liquid thread locker.

Torque specifications undefined by SW-MOTECH must be obtained from the vehicle manufacturer or by a specialist workshop!

FUNCTION CHECK: After installation make sure that all parts and connections previously removed are properly replaced. Also make sure that no moving parts are obstructed and no function of the vehicle is hindered in any way. Cables and hoses must not rub and/or be pinched. Before starting to ride, perform a comprehensive check of all functions. After the first 50 km and then at regular intervals, check the tightening torque of all screw connections and the proper fit of the product.

PRODUCT SPECIFIC INFORMATION

Maximum Load	Maximum Speed
 7.5 (16.5 lbs)	 130 km/h (80 mph)

ATTENTION: The indicated maximum load is inclusive the weight of topcase/luggage and adapter kit! The maximum vehicle load specified by the manufacturer must not be exceeded!

PARTS LIST

Schritt Step	Nr. No.	Art.-Nr. / Bezeichnung ^a Item No. / Description ^a	Artikel	Part	Anzahl ^b Quantity ^b	N·m ^c											
4	(1)	GPT.01.950.001 L / R	Anbaublech; links / rechts	Mounting Bracket; left / right	2 / 2												
	(2)	M8 x 25; DIN 7991	Innensechskantschraube	Hexagon Socket Screw	4 / 4	20											
	(3)	Ø 20 / ø 8,2 / h 6	Distanzbuchse	Spacer	2 / 2												
	(4)	Ø 20 / ø 8,2 / h 4	Distanzbuchse	Spacer	2 / 2												
5	(5)	GPT.01.950.901.01 / 902.01	Anbaustrebe; links / rechts	Mounting Strut; left / right	2 / 2												
	(6)	KES.RD.210.0300.02.GL	Kunststoffstopfen	Plastic Plug	2 / 2												
	(7)	M8 x 25; DIN 6912	Innensechskantschraube, fl. Kopf; schwarz	Hexagon Socket Screw; short head; black	2 / 2	23											
	(8)	ø 8,4; DIN 125	Unterlegscheibe; schwarz	Washer; black	2 / 4												
	(9)	M8; DIN 6927	Mutter mit Bund, selbstsichernd; schwarz	Lock Nut with Flange; black	2 / 2												
	(10)	M8 x 35; DIN 6912	Innensechskantschraube, fl. Kopf; schwarz	Hexagon Socket Screw; short head; black	2 / 2	20											
	(11)	ø 8,4; DIN 125	Unterlegscheibe; schwarz	Washer; black	2 / 4												
	(12)	Ø 20 / ø 8,5 / h 10	Distanzbuchse	Spacer	2 / 2												
	6	(13)	GPT.00.152.002	Gepäckträger	Luggage Rack	1 / 1											
		(14)	M6 x 18; ISO 7380	Linsenkopfschraube; schwarz	Lenshead Screw; black	4 / 4	10										
		(15)	ø 6,4; DIN 522	Unterlegscheibe; schwarz	Washer; black	4 / 4											
		(16)	M6; DIN 6927	Mutter mit Bund, selbstsichernd; schwarz	Lock Nut with Flange; black	4 / 4											
8.8	Regelgewinde / Coarse Thread Ø		M4	M5	M6	M8	M10	M12	10.9	Regelgewinde / Coarse Thread Ø		M4	M5	M6	M8	M10	M12
	Stahl FK 8.8 / Steel CL 8.8 N·m		2,8	5,5	9,6	23	46	79		Stahl FK 10.9 / Steel CL 10.9 N·m		4,1	8,1	14	34	67	115

Note: a All measurements in millimetres. b The second number indicates the total quantity of the part in the delivery. No torque specifications: Use the torque defined by vehicle manufacturer! The standard torque in this table can be used as long as it is within the vehicle manufacturer's specifications.

4



2



3



4



5



6



7



8



9



10



11



12



6



14



15

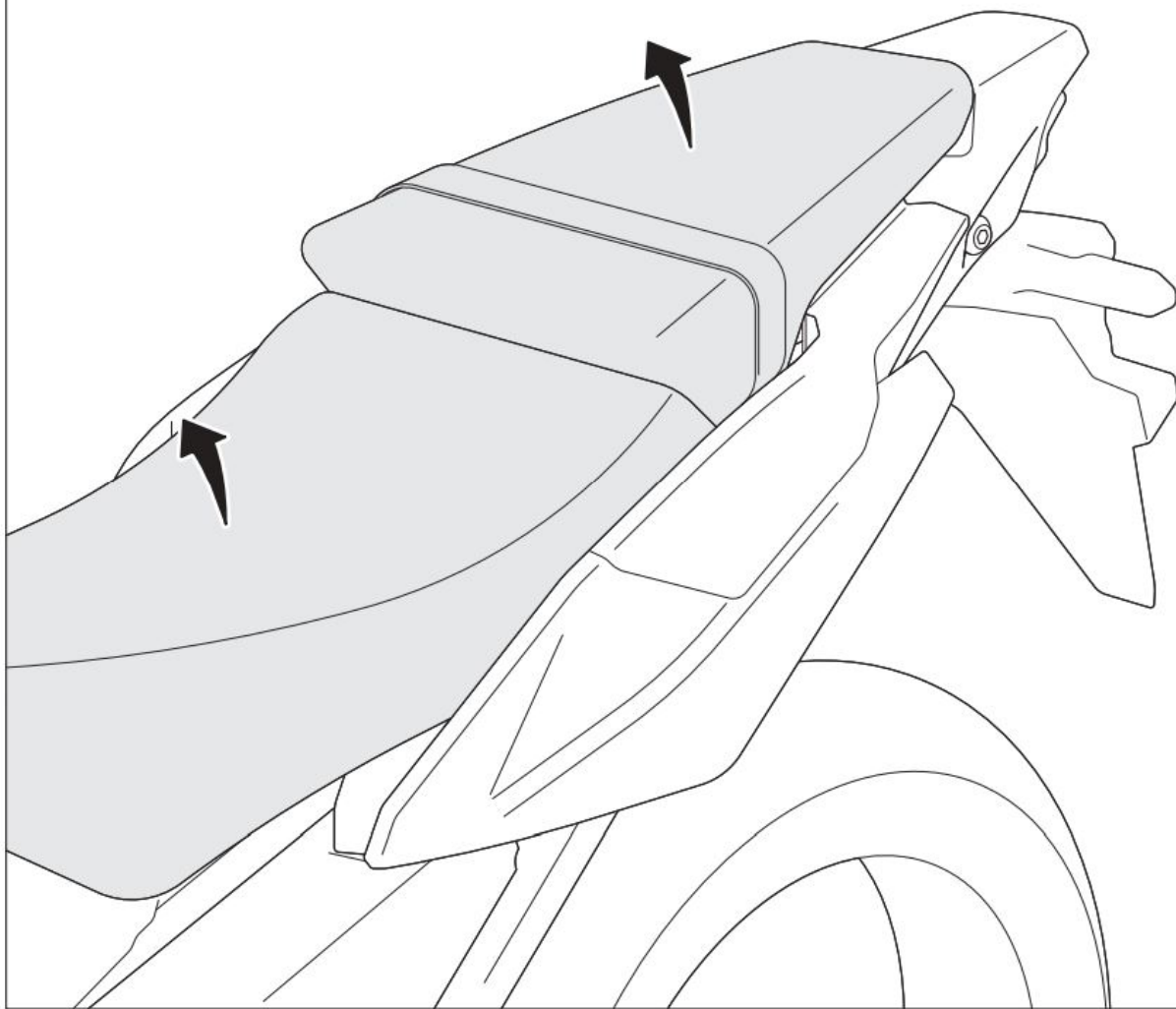


16



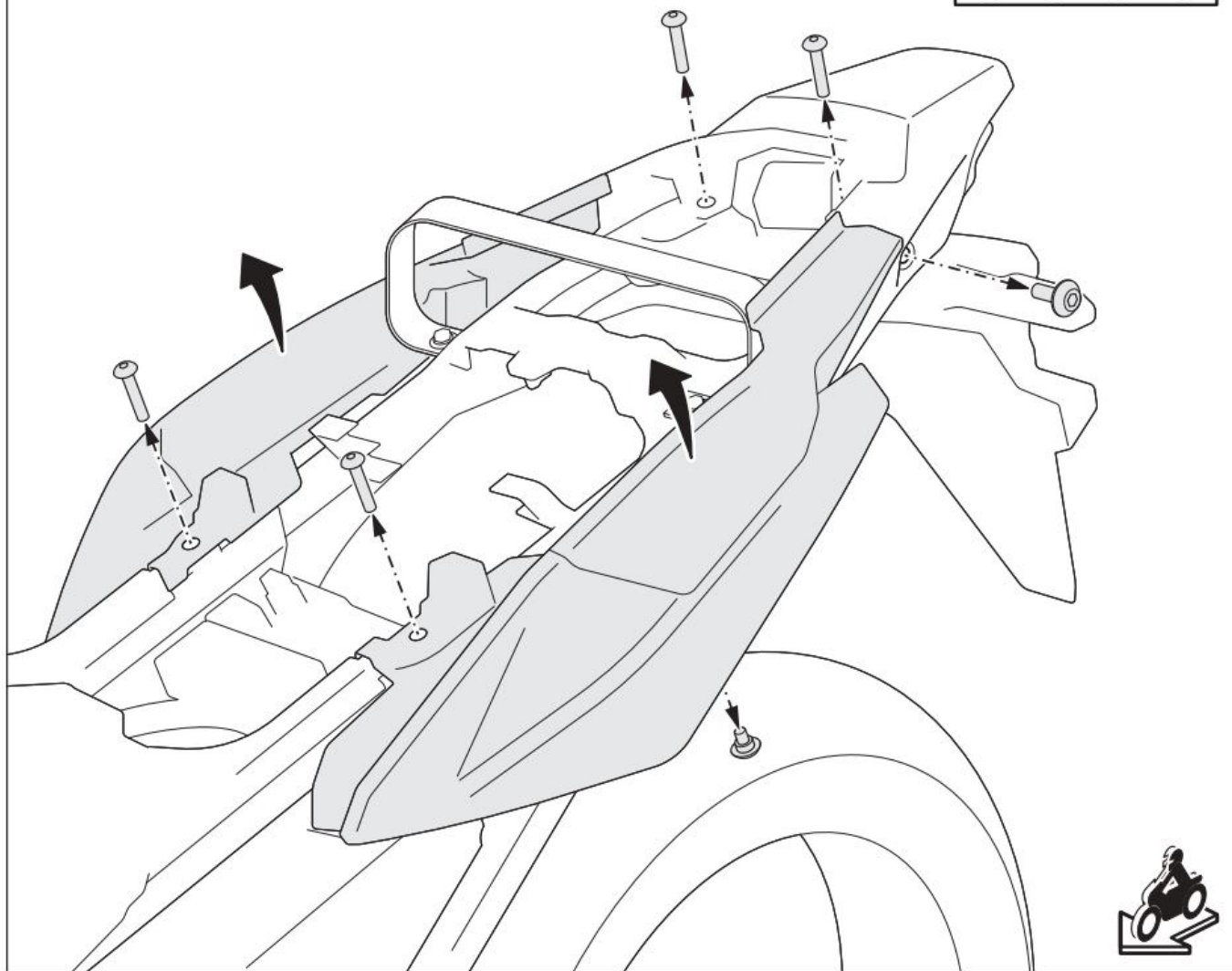
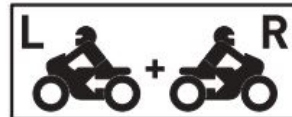
MOUNTING

1



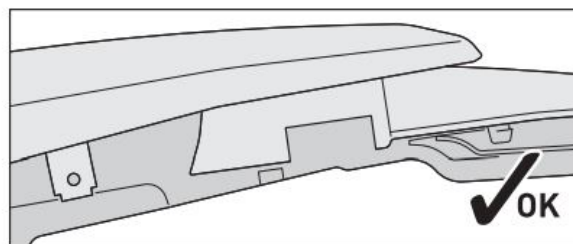
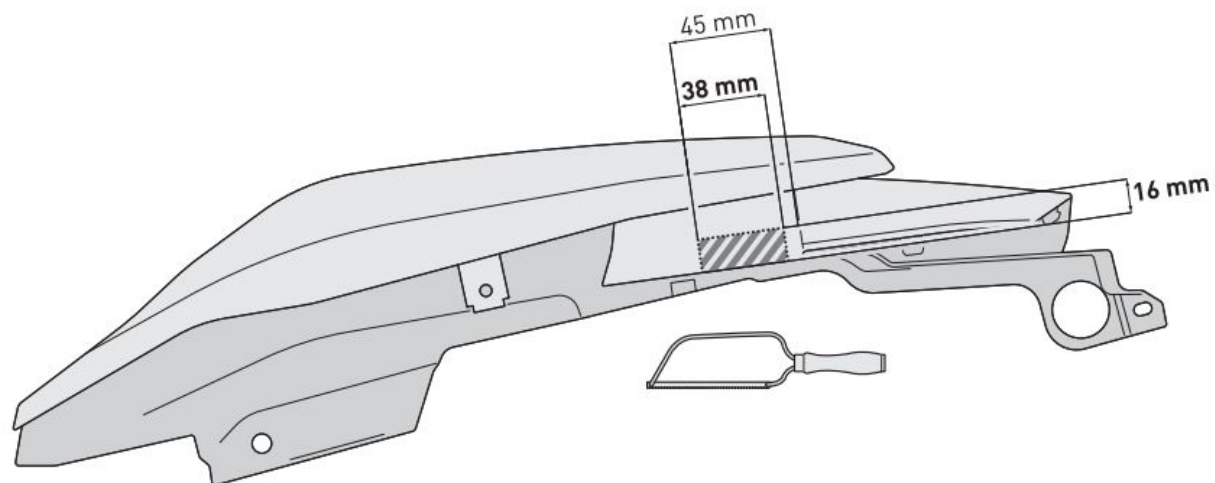
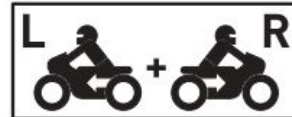
Remove the seat bench and the passenger seat from the vehicle.

2



Remove on both sides of the vehicle the shown screws and then the rear side fairings from the vehicle. Pay attention to the plastic hooks of the side fairings.

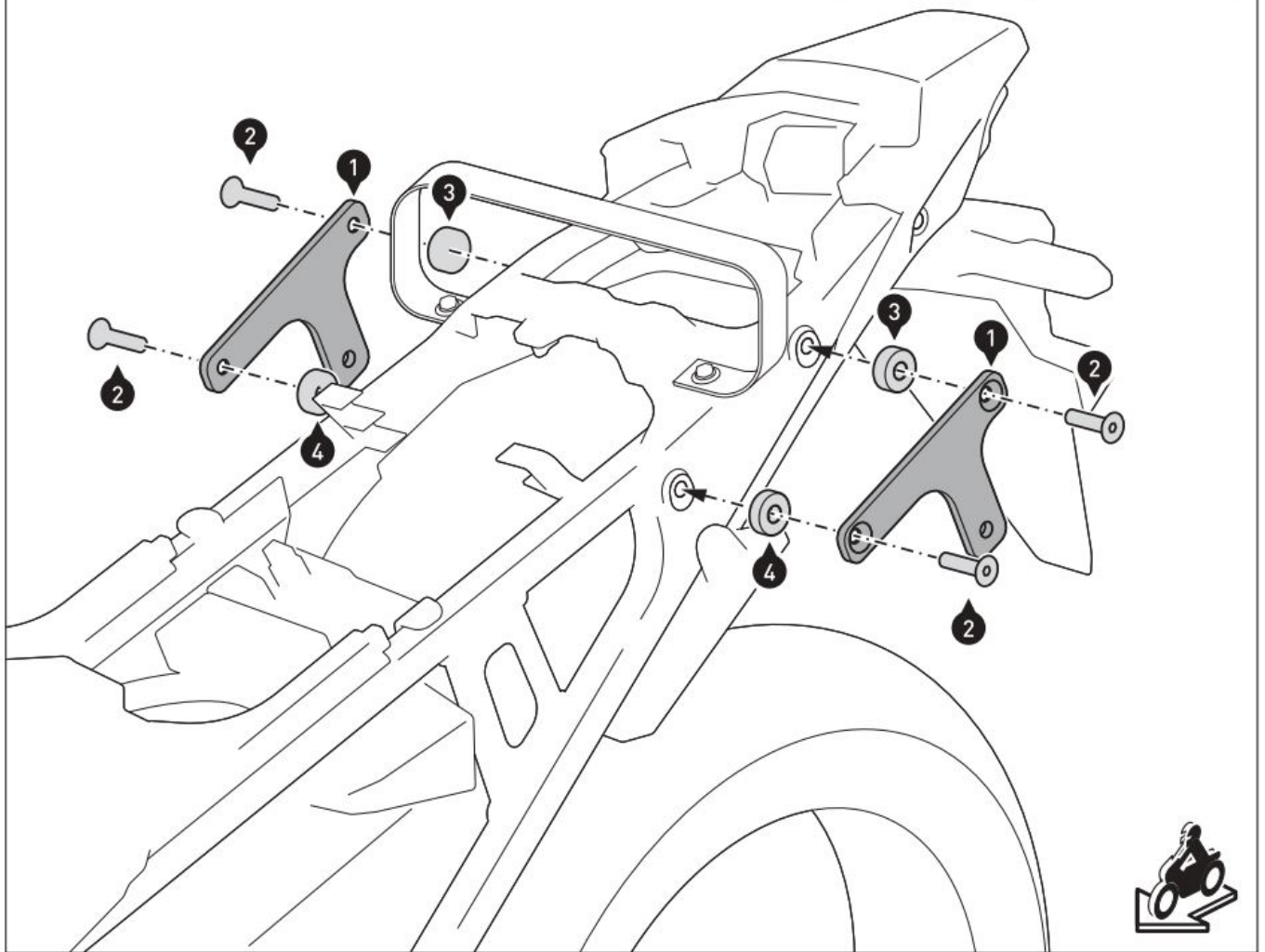
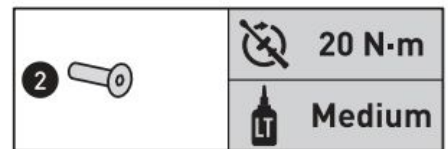
3



ATTENTION: Risk of injury!

Use a suitable tool to cut I saw recesses in the undersides of the two side fairings, as shown in the drawing. Deburr the edges.

4

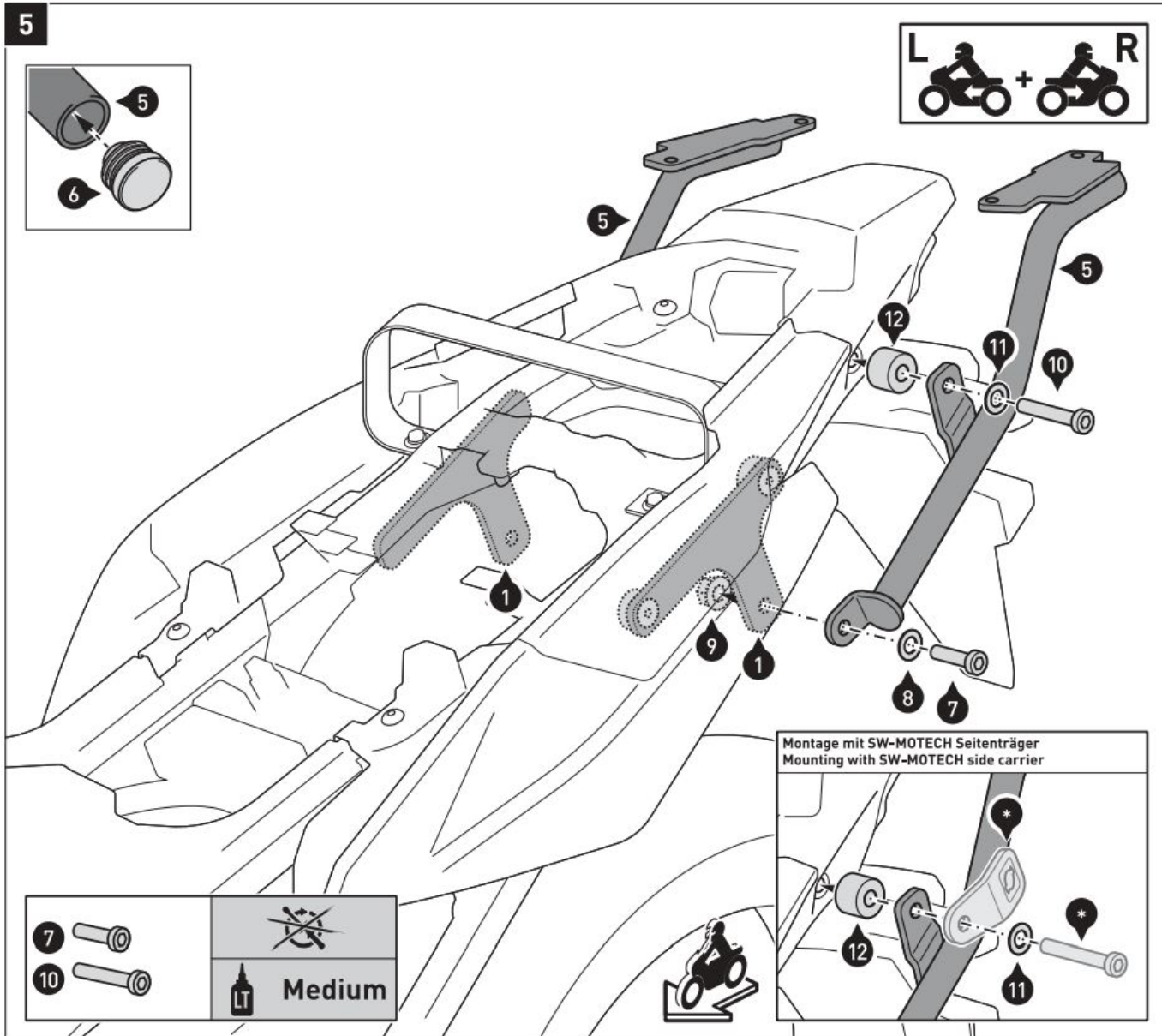


Attach the mounting brackets (1) on both sides to the vehicle, as shown in the drawing.

ATTENTION: Use liquid thread locker!

Tighten the screws as specified.

Reattach the side fairings to the vehicle.



NOTE: When mounting the luggage rack with the SW-MOTECH side carrier, the screws (1 OJ are not required. Mount instead the marked parts of the side carrier, as shown in the drawing.

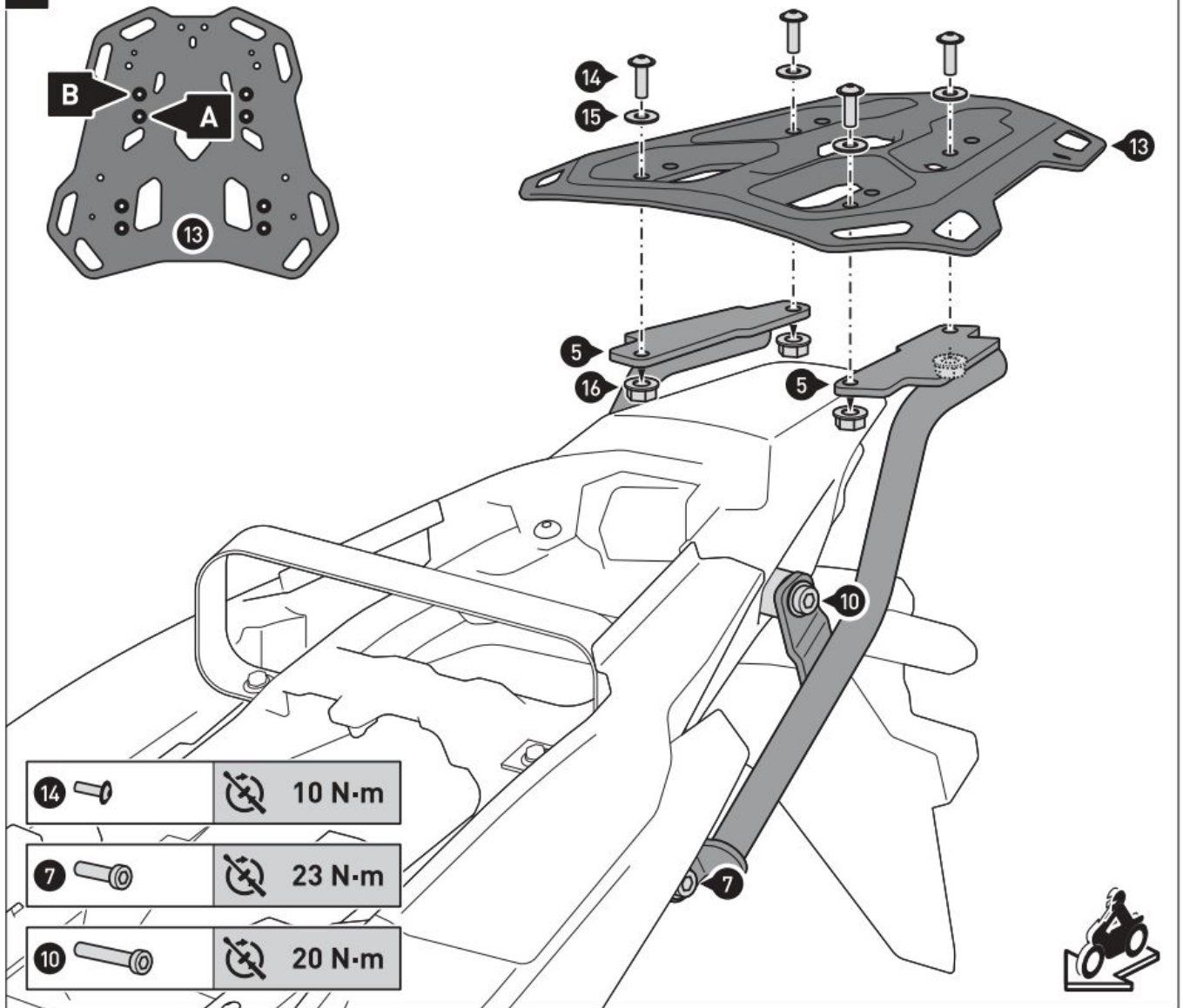
Insert the plastic plugs (6) into the mounting struts (5).

Attach the mounting struts (5) to the mounting brackets (1) and the vehicle, as shown in the drawing.

ATTENTION: Use liquid thread locker!

Do not fully tighten the screws yet.

6



NOTE: Depending on the available space, attach the luggage rack to the marked mounting position (A) or (B), as shown in the detail drawing. Attach the luggage rack (13) to the mounting struts (5), as shown in the drawing.

Once all parts are evenly positioned without excess tension, tighten the screws as specified.
Reattach the seats.

Adapter kit for ADVENTURE-/STREET-RACK -TRAX

Thank you for choosing this premium product from SW-MOTECH. Please visit our web shop for additional information, such as application charts and PDF mounting instructions. Any other documents that may be required (e.g. ABE certifications), are also available for download at our web shop.

Installation and/or maintenance of this product require good technical understanding! For your own safety SW-MOTECH recommends having installation and/or servicing carried out by a specialist workshop! SW-MOTECH assumes no liability for damage caused by improper installation and/or maintenance work!

Carefully follow all the directions given in the mounting instructions and pay attention to all relevant information in the vehicle manual during assembly. Non-conformance can lead to vehicle damage or even endanger the driver! These mounting instructions are written based on our current state of knowledge. Legal requirements for accuracy do not exist.

This product was developed for vehicles in their factory setting. Compatibility with original accessory parts or other manufacturers' accessory parts is not guaranteed. Furthermore, BEFORE installing this product, make sure that all moving parts (e.g. the chain) are in the original state of maintenance. Installed accessories can change the driving behaviour and/or stability of your vehicle.

GENERAL INFORMATION

Observe the country-specific regulations concerning vehicle registration/ operation as well as TUV regulations if applicable. If required, register installed parts in the vehicle documents through an appropriate inspection authority.

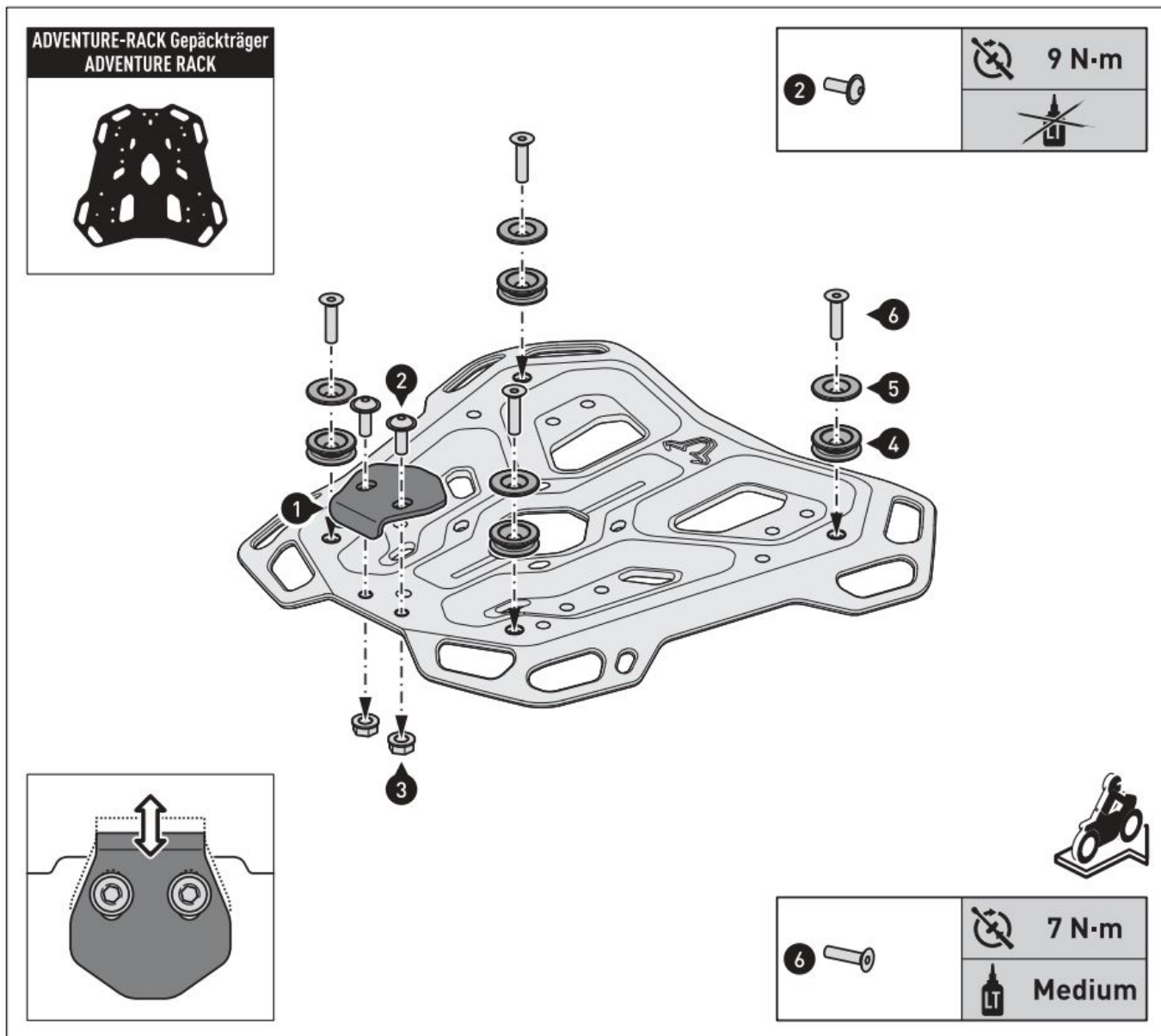
PREPARATION: Read the mounting instructions carefully and make sure that all items of the parts list are included. Make sure that your vehicle is parked safely and cannot fall over. Turn off the engine and remove the ignition key.

Let the motor/exhaust cool off if necessary. Disconnect the vehicle battery when working on the electrical system. Use appropriate tools. Have another person to help you.

MOUNTING: All parts and connections removed from the vehicle must be reinstalled in accordance with the vehicle manufacturers' specifications or replaced by parts delivered by SW-MOTECH. Secure all threads, unless otherwise specified, with medium-strength liquid thread locker.

Torque specifications undefined by SW-MOTECH must be obtained from the vehicle manufacturer or by a specialist workshop!

FUNCTION CHECK: After installation make sure that all parts and connections previously removed are properly replaced. Also make sure that no moving parts are obstructed and no function of the vehicle is hindered in any way. Cables and hoses must not rub and/or be pinched. Before starting to ride, perform a comprehensive check of all functions. After the first 50 km and then at regular intervals, check the tightening torque of all screw connections and the proper fit of the product.



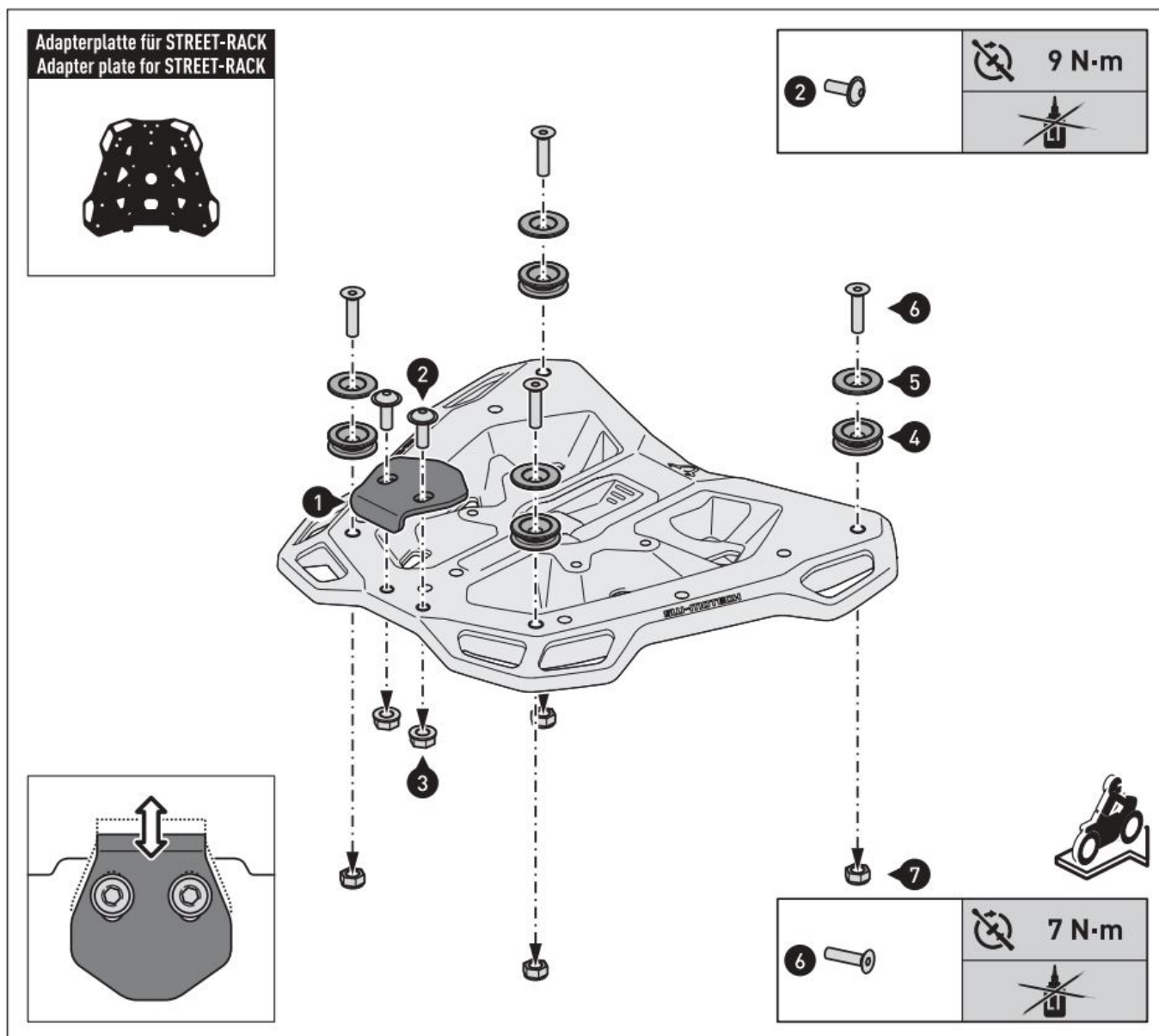
ADVENTURE RACK

Attach the shown parts to your ADVENTURE RACK [sold separately].

ATTENTION: Use liquid thread locker (screws (6) only)!

Tighten the screws as specified in the parts list.

ATTENTION: To ensure the proper fit of your TRAX ADV/EVO/ION top case, adjust the latch hook (1) over the elongated holes (see detail drawing)! Make sure that the top case's latch engages properly when mounted!



Adapter plate for STREET-RACK

Attach the shown parts to your adapter plate for STREET-RACK [sold separately].
Tighten the screws as specified in the parts list.

ATTENTION: To ensure the proper fit of your TRAX ADV/EVO/ION top case, adjust the latch hook (1) over the elongated holes (see detail drawing)! Make sure that the top case's latch engages properly when mounted!

MOUNTING INSTRUCTIONS

TRAX ADVENTURE ALU-BOX

Thank you for choosing this premium product from SW-MOTECH. ~ Please visit our webshop for additional information, such as application charts and PDF mounting instructions. Any other documents that may be required (e.g. ABE certifications), are also available for download at our webshop. » www.sw-motech.com

Installation and/or maintenance of this product require good technical understanding. For your own safety SW-MOTECH recommends having installation and/or servicing carried out by a specialist workshop. SW-MOTECH assumes no liability for damage caused by improper installation and/or maintenance work.

Carefully follow all the directions given in the mounting instructions. Also pay attention to all relevant information in the vehicle manual during assembly. Non-conformance can lead to vehicle damage or even endanger the driver! Please keep the mounting instructions as reference.

This product was developed for vehicles in their original condition. Compatibility with original accessory parts or other manufacturers accessory parts is not guaranteed. Installed accessories can change driving behaviour and/or stability of your vehicle.

GENERAL INFORMATION

Observe any country-specific legal or TOV regulations. If required, enter the installed parts into the vehicle documents with the appropriate inspection authority.

SECURITY

Please pay attention to the following information concerning the TRAX ADVENTURE ALU-BOX:

The TRAX ADVENTURE ALU-BOX is designed exclusively for mounting on SW-MOTECH QUICK-LOCK side carriers, QUICK-LOCK adapter plate and STEEL-RACK adapter kit.

Modifications made to the cases will void any warranty.

ATTENTION: Riding with TRAX ADVENTURE ALU-BOX may affect the motorcycle's driving and braking performance.

ATTENTION: TRAX ADVENTURE ALU-BOXES M & L must be used in pairs. Make sure the weight is evenly distributed between left and right side case.

ATTENTION: Maximum load: Please refer to the mounting instructions of the SW-MOTECH QUICK-LOCK side carrier, ALU-RACK or STEEL-RACK. Maximum speed with mounted cases: 130 km/h (80 mph).

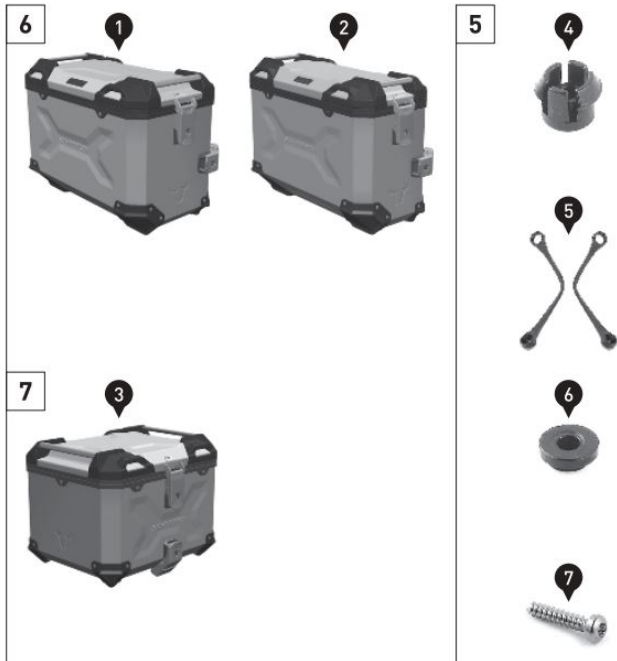
ATTENTION: Make sure that the TRAX ADVENTURE ALU-BOX is properly attached to the particular adapter and fully engaged to all four mounting points! ALL latches of the TRAX ADVENTURE ALU-BOX must be locked BEFORE riding with the Trax® EVO / TRAX ADV lock cylinder set (sold separately) and remain closed while riding. Improperly mounted cases run the risk of detaching during transport.

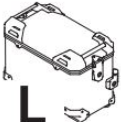




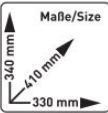

CARE

To clean the TRAX ADVENTURE ALU-BOX, use warm, soapy water and a soft, clean cloth. Rinse with clean water. Do NOT use strong cleaning agents, rough cleaning tools or high pressure washer!

Part	Anzahl * Quantity *	N·m
TRAX ADV ALU-BOX	1 / 1	
Snap-Fit	2 / 2	
Lid Limiter	2 / 2	
Swivel Part	2 / 2	
Lenshead Screw, self-tapping	4 / 4	0,5

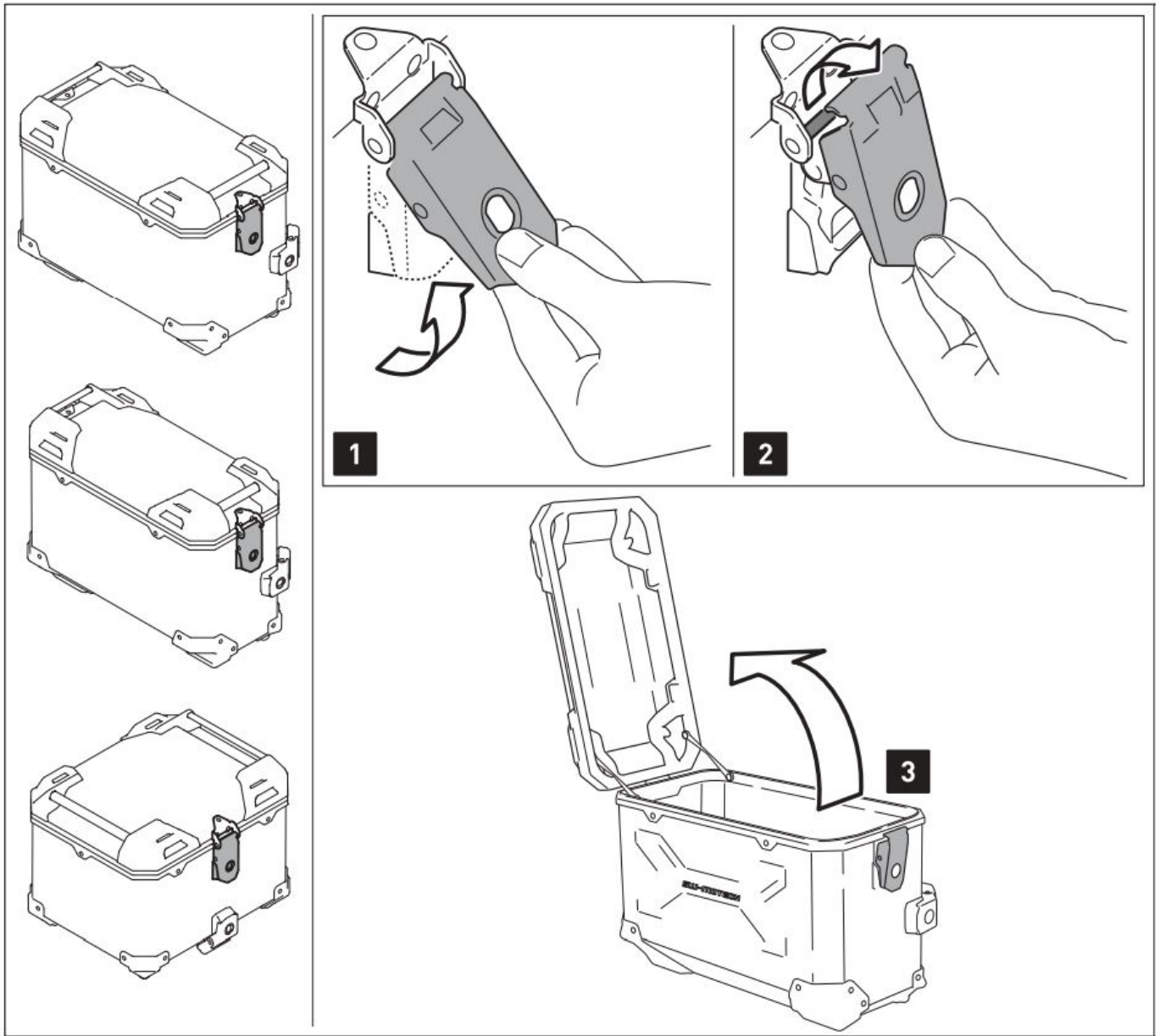
All measurements in millimetres. The second number indicates the total quantity of the listed part in the delivery.



TECHNISCHE DETAILS / TECHNICAL DETAILS				
 L	 Maße/Size	Volumen Volume 45 l	Eigengewicht Empty weight 5,4 kg	
 M	 Maße/Size	Volumen Volume 37 l	Eigengewicht Empty weight 5,1 kg	
 TC	 Maße/Size	Volumen Volume 38 l	Eigengewicht Empty weight 4,6 kg	 Kapazität Capacity 1x
 www.sw-motech.com				
Bitte besuchen Sie unseren Webshop für Modelzuweisungen und passendem Zubehör.			Please visit our webshop for application charts and compatible accessories.	

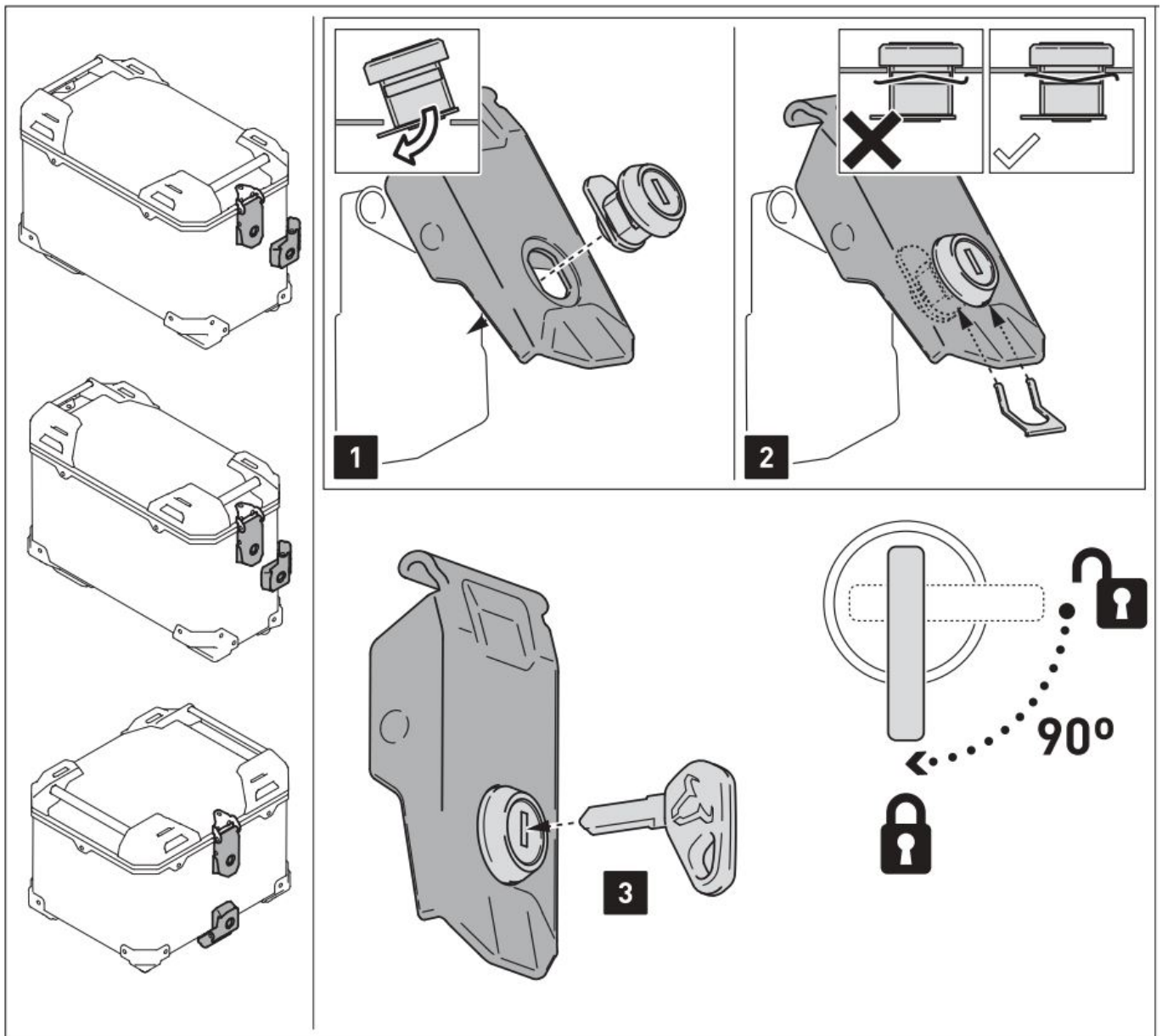
www.sw-motech.com

LID AND LOCK CYLINDER SET



Open the lid
(TRAX ADV M / L / top case)

1. Pull the latch of the lid upwards
2. and remove it from the latch bar.
3. Open the lid.



Insertion of the Trax® EVO / TRAX ADV lock cylinder set * (TRAX ADV M / L / Top case)

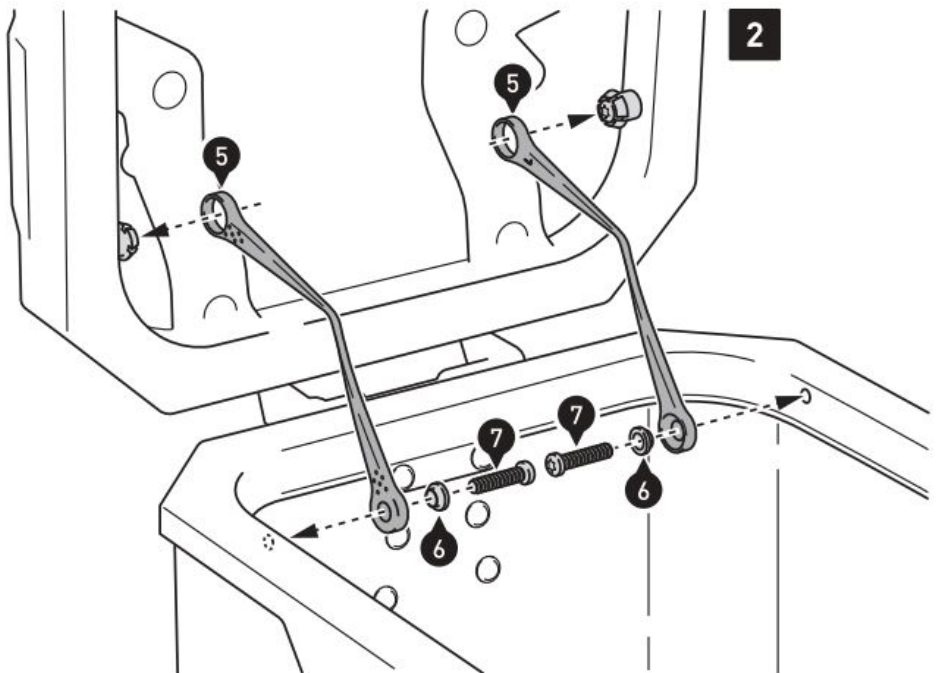
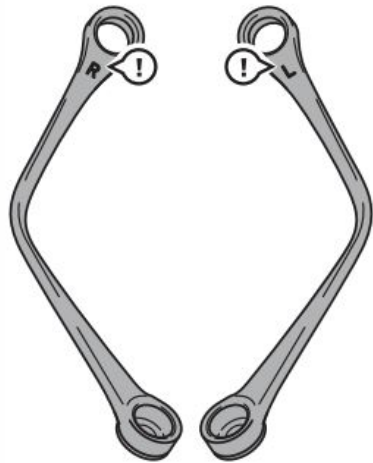
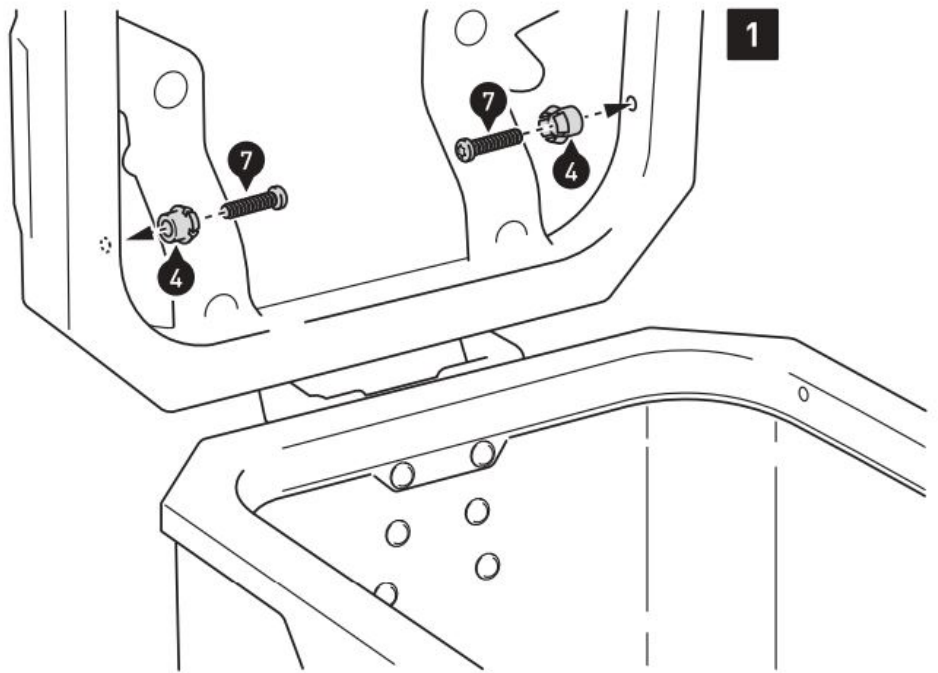
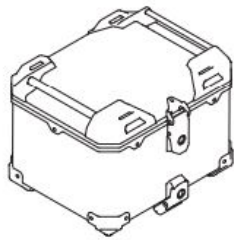
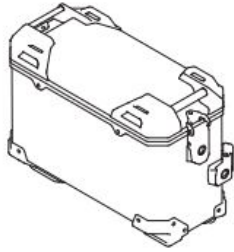
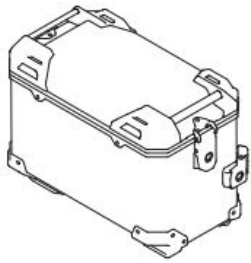
1.- Insert the lock cylinders into the latches .

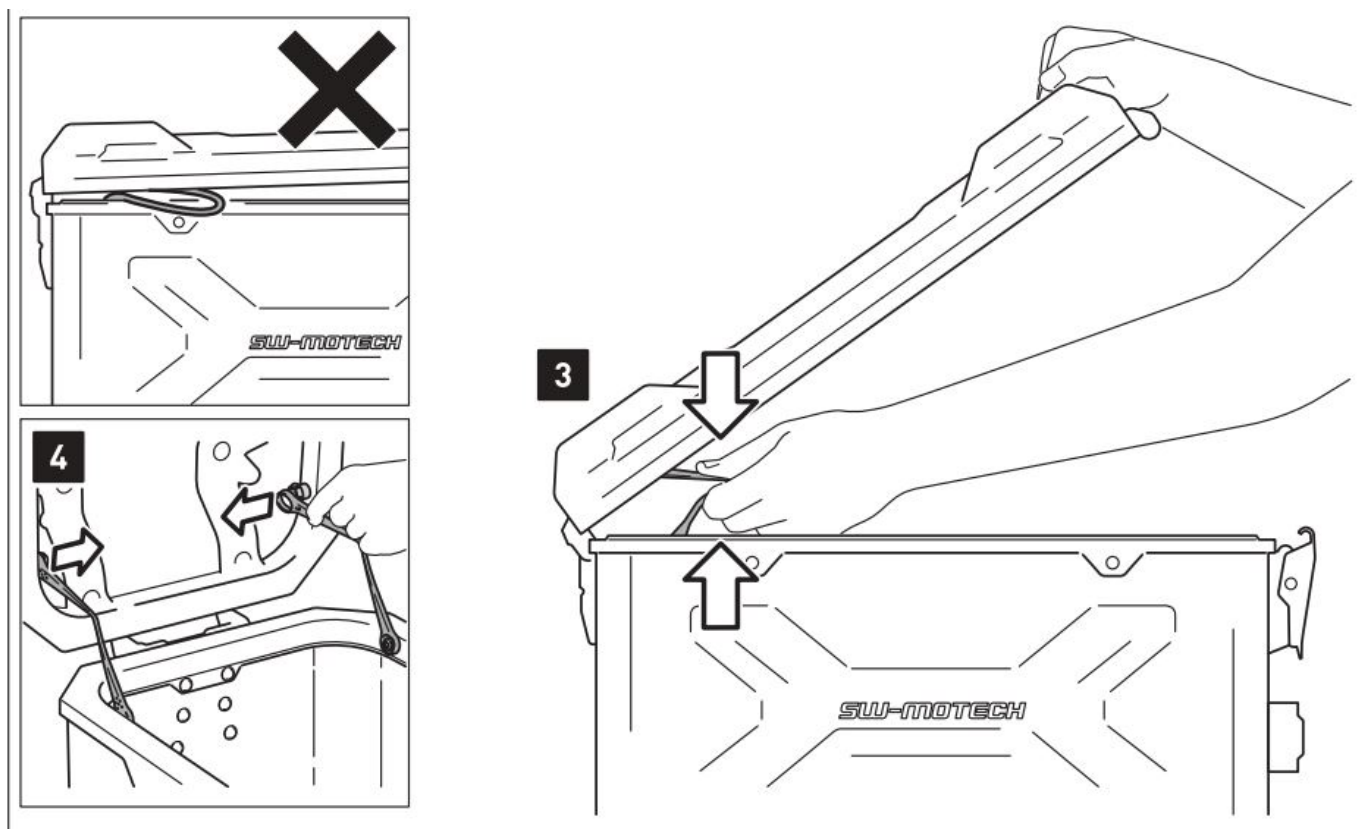
2.- Secure the lock cylinders with the clamping plates .

ATTENTION: Pay attention to the correct alignment of the clamping plates (as shown in the detail drawings).

3.- Insert the keys into the lock cylinders; open or close the lock cylinder as shown in the schematic drawing.

LID LIMITER

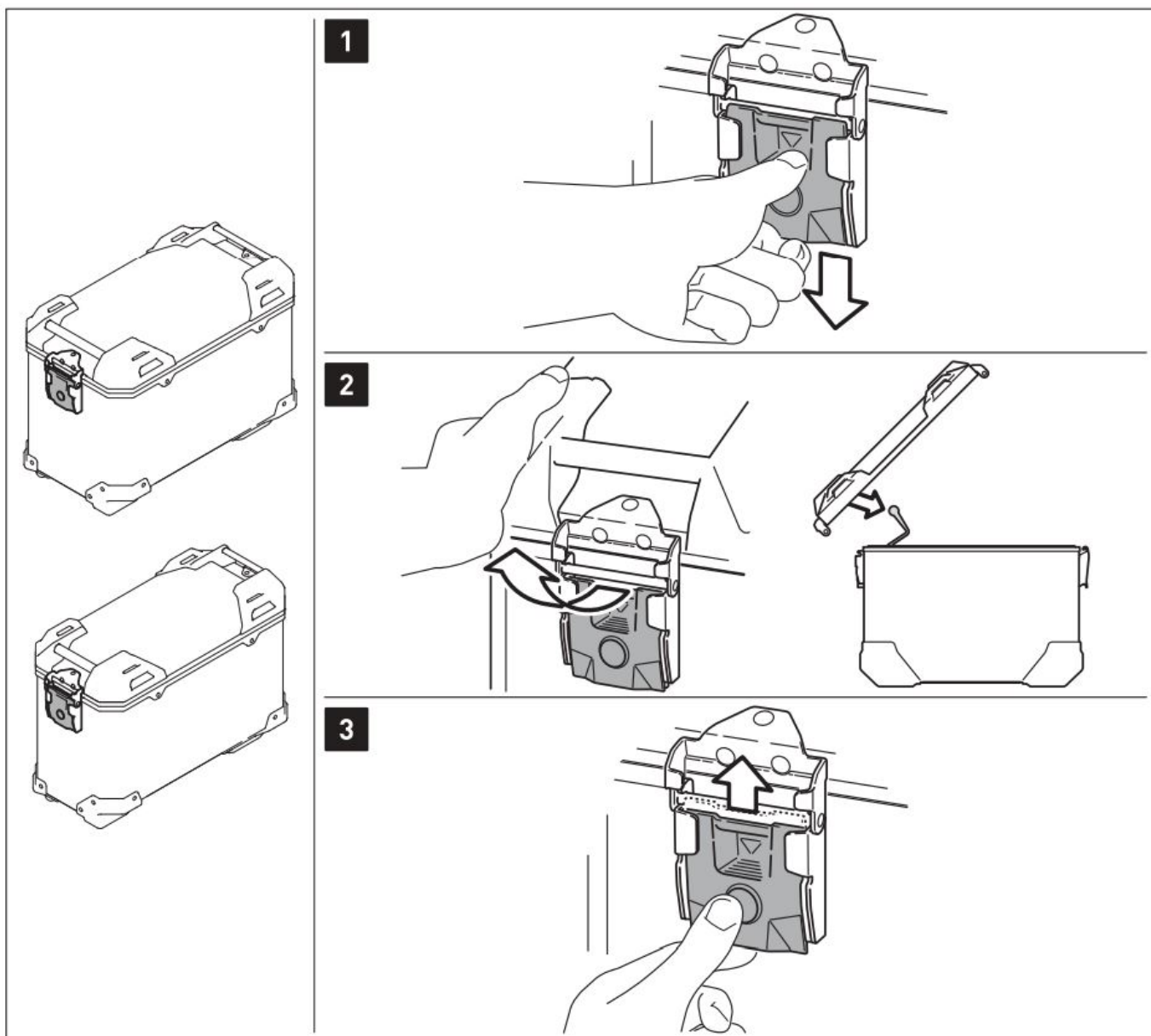




Mounting the lid limiters [TRAX ADV M / L / top case)

1. Open the lid. Attach the snap-fit (4) with the shown parts at the lid frame.
Tighten the screws as specified in the parts list.
2. Attach the lid limiters (5) with the shown parts at the case frame.
NOTE: Pay attention to left-right specifications for the limiters (in driving direction).
Tighten the screws as specified in the parts list.
Press the lid limiters onto the snap-fits.
3. Before closing the lid for the first time, the lid limiters must be compressed as shown in the drawing.
While closing the lid, make sure that the lid limiters are not pinched between lid and case.
4. To remove the lid from the case (as shown on page 51, remove the lid limiters from the snap-fits first.

QUICK RELEASE FASTENER



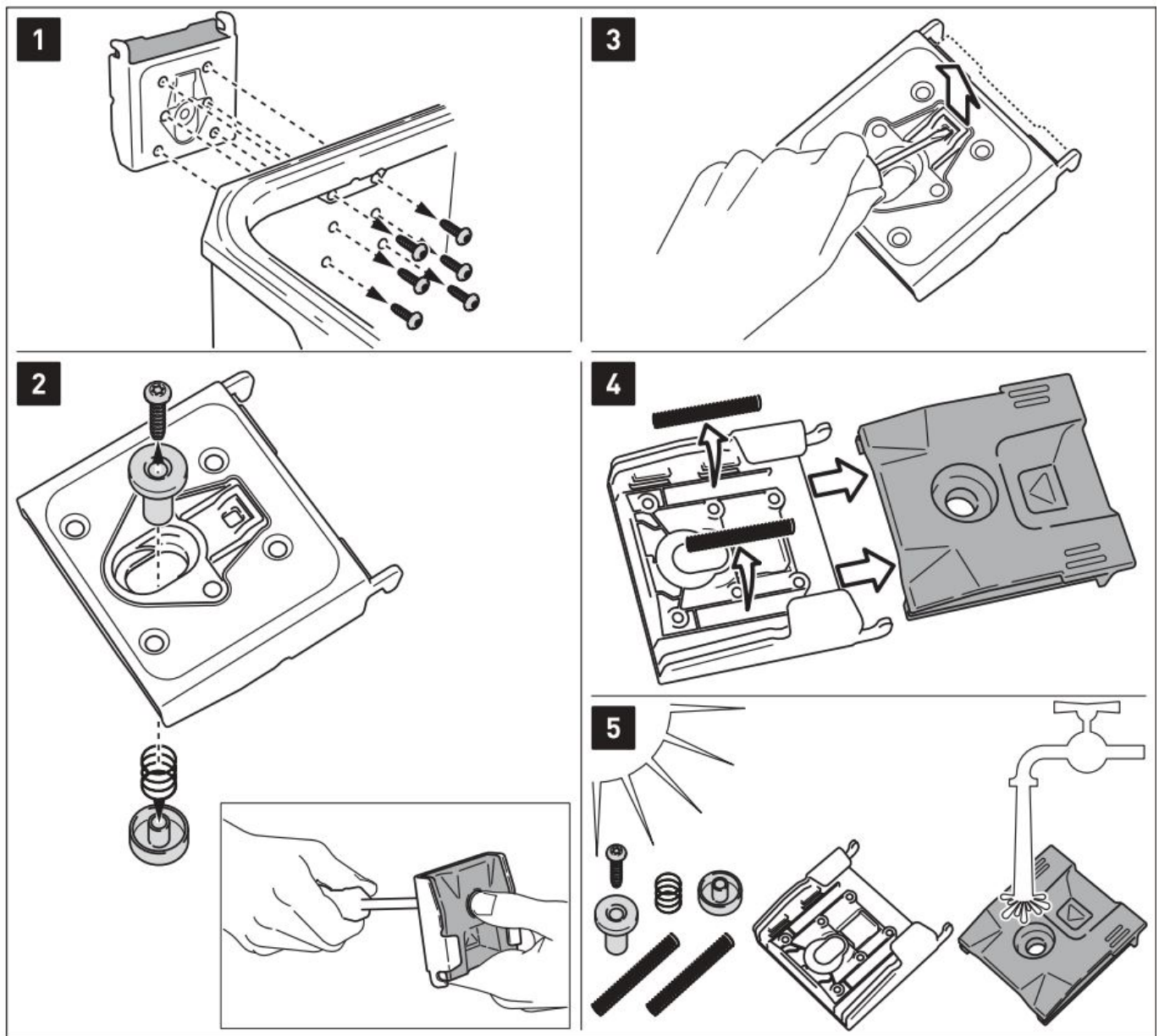
Removing the lid (TRAX ADVENTURE M / LI)

1. Press the quick release fastener down until it clicks into place and the button pops out.

2. Then remove the lid from the case.

NOTE: If you have installed the lid limiters (5), they must be detached before removing the lid (as shown on page 4).

3. Press the button of the quick release fastener to lock the replaced lid in place. Make sure that the quick release fastener snaps above.

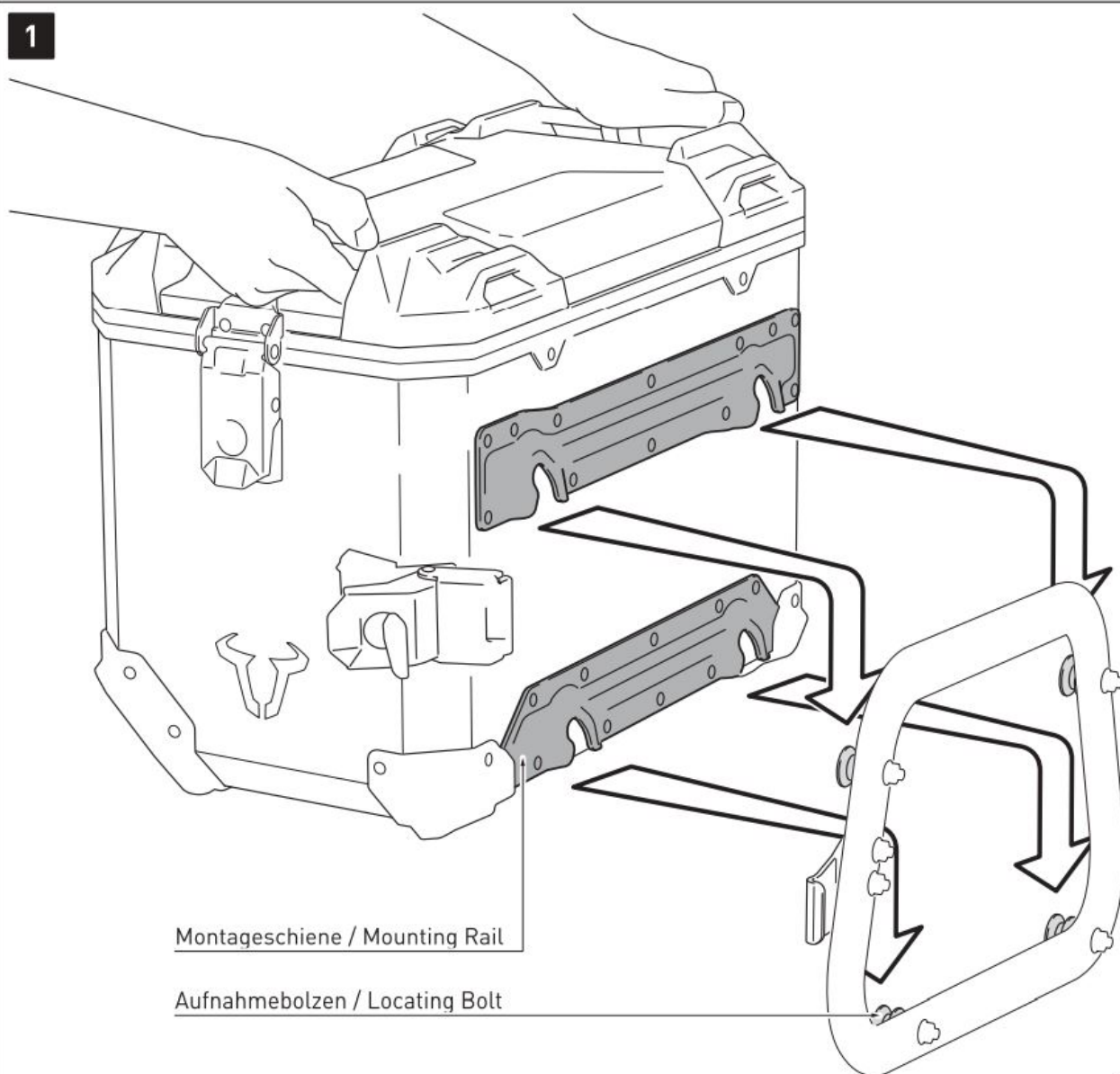


Maintenance and cleaning of the quick release fastener (TRAX ADVENTURE M / LI)

1. Loosen the six screws on the inner side of the case and remove the quick release fastener.
2. Loosen the screw of the button (fix with thumb and index finger).
3. Loosen the shown clip carefully and ...
4. remove the quick release fastener and springs from the mounting plate.
5. Clean the components with clean water and let it air dry.

Reattach all arts in reversed order.

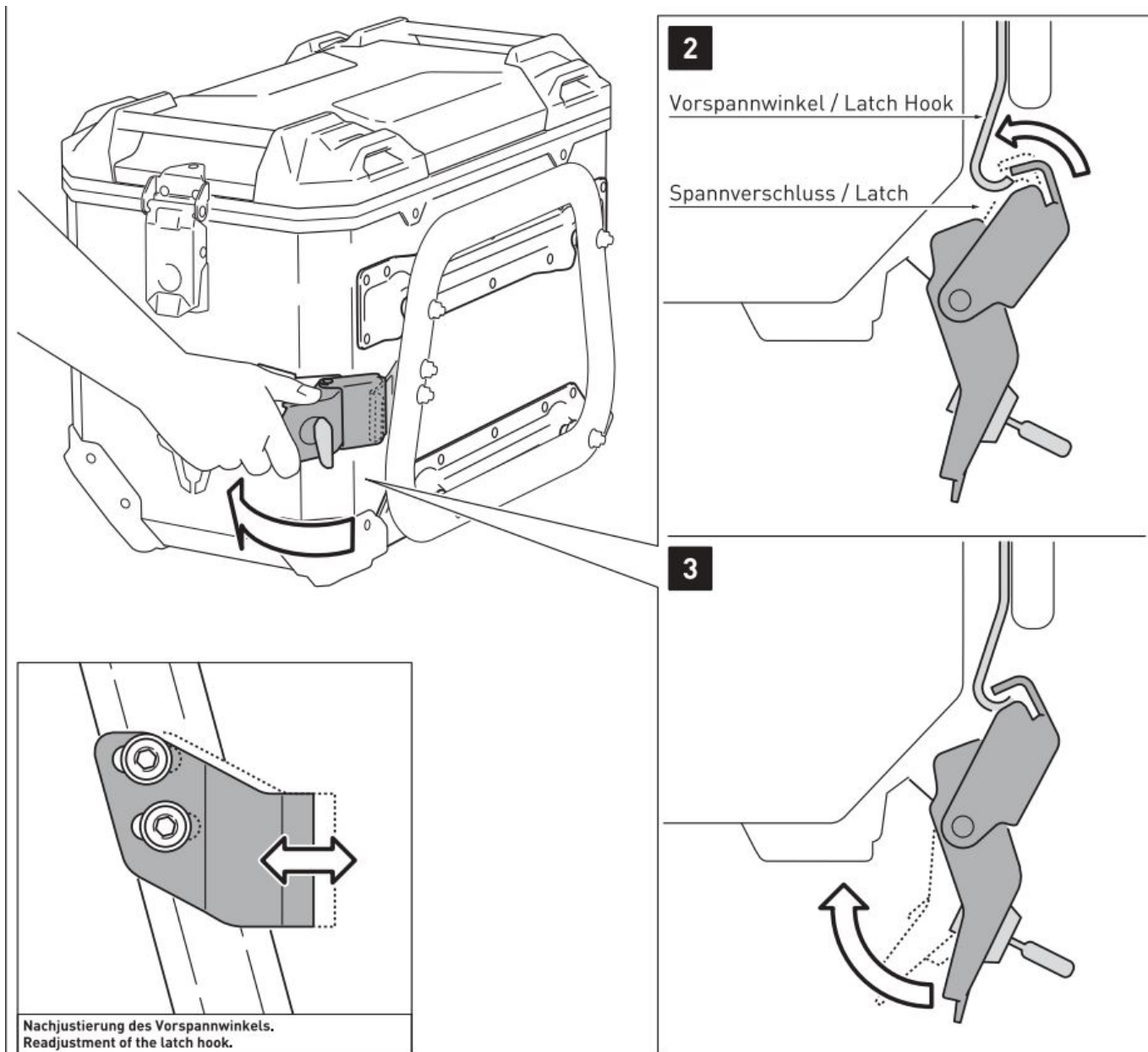
1



Montageschiene / Mounting Rail

Aufnahmebolzen / Locating Bolt





Attachment of TRAX ADVENTURE ALU-BOX M & L

1. Lead the four openings of the mounting rails onto the locating bolts of the mounted QUICK-LOCK adapter kit. Then press the TRAX ADVENTURE ALU-BOX slightly downward, until it properly rests on QUICK-LOCK side carrier.
ATTENTION: Make sure that all four locating bolts rests on at the same time.
2. Place the latch over the latch hook and ...
3. lose the latch; check the proper fit of the TRAX ADVENTURE ALU-BOX on the QUICK-LOCK side carrier.

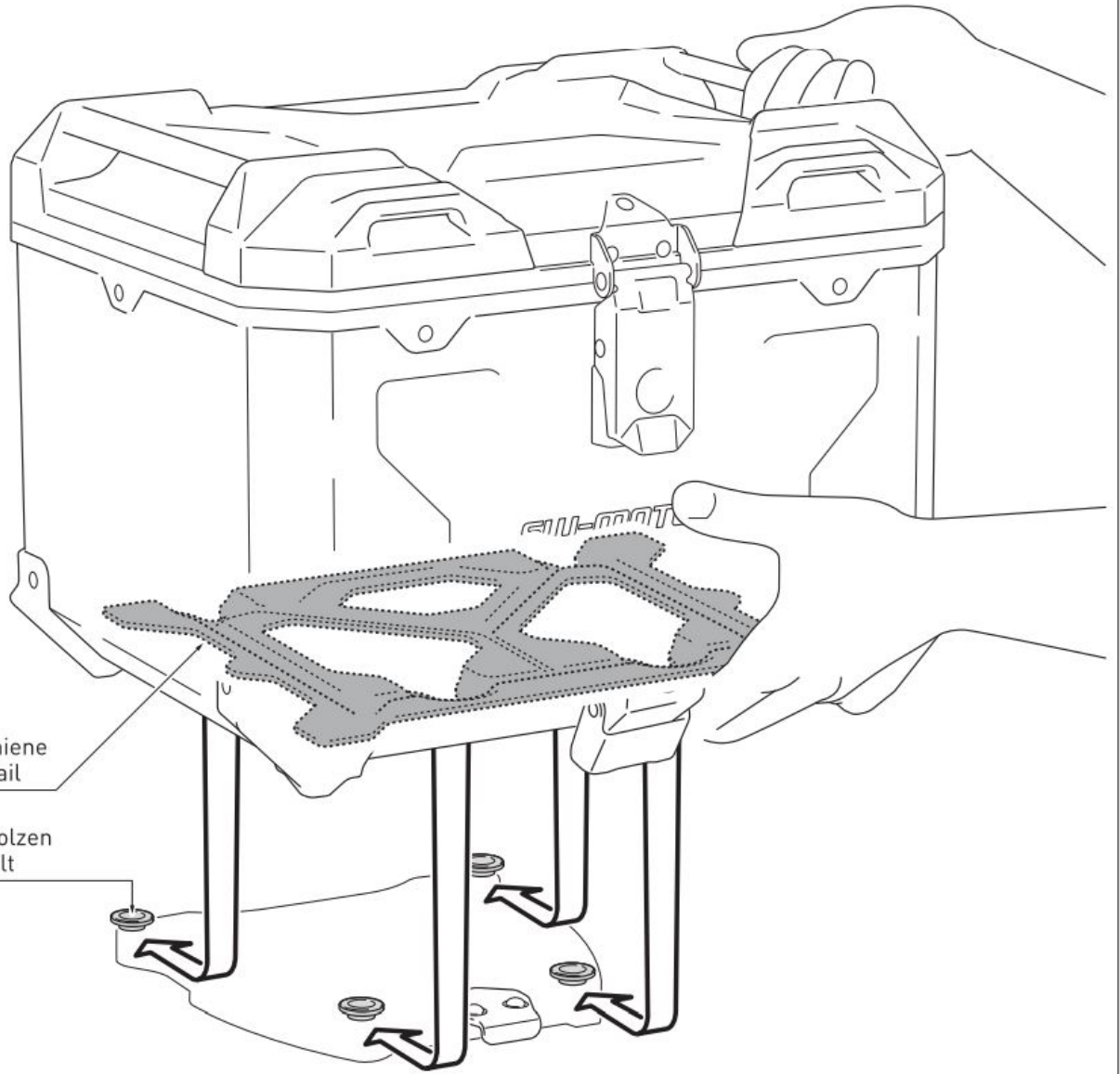
ATTENTION: Make sure the closed latch is under sufficient tension! If not the latch hook must be readjusted!

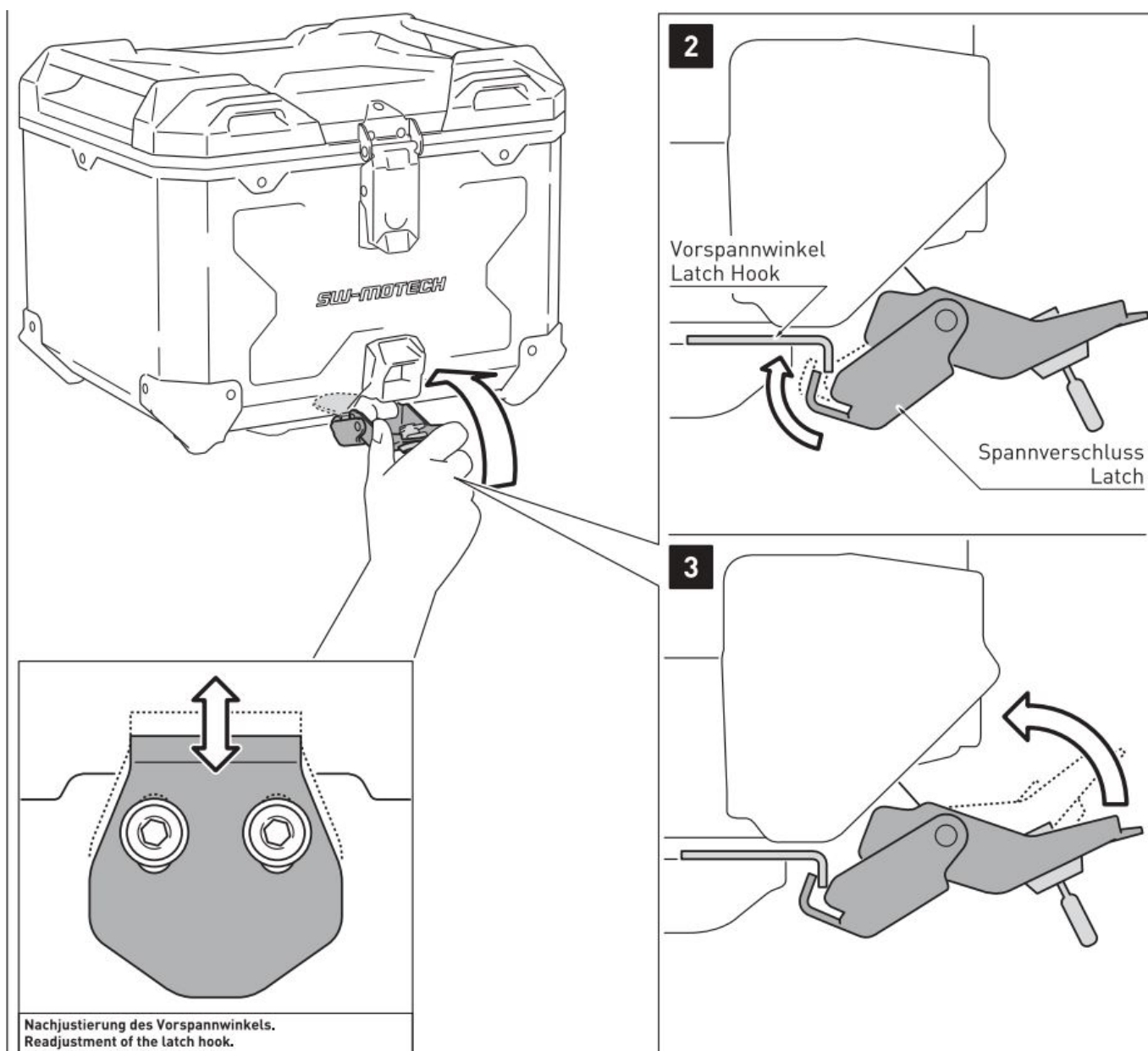
ATTENTION: Secure the TRAX ADVENTURE ALU-BOX with the separately available Trax® EVO / TRAX ADVENTURE lock cylinder set at the QUICK-LOCK side carrier before riding!

1

Montageschiene
Mounting Rail

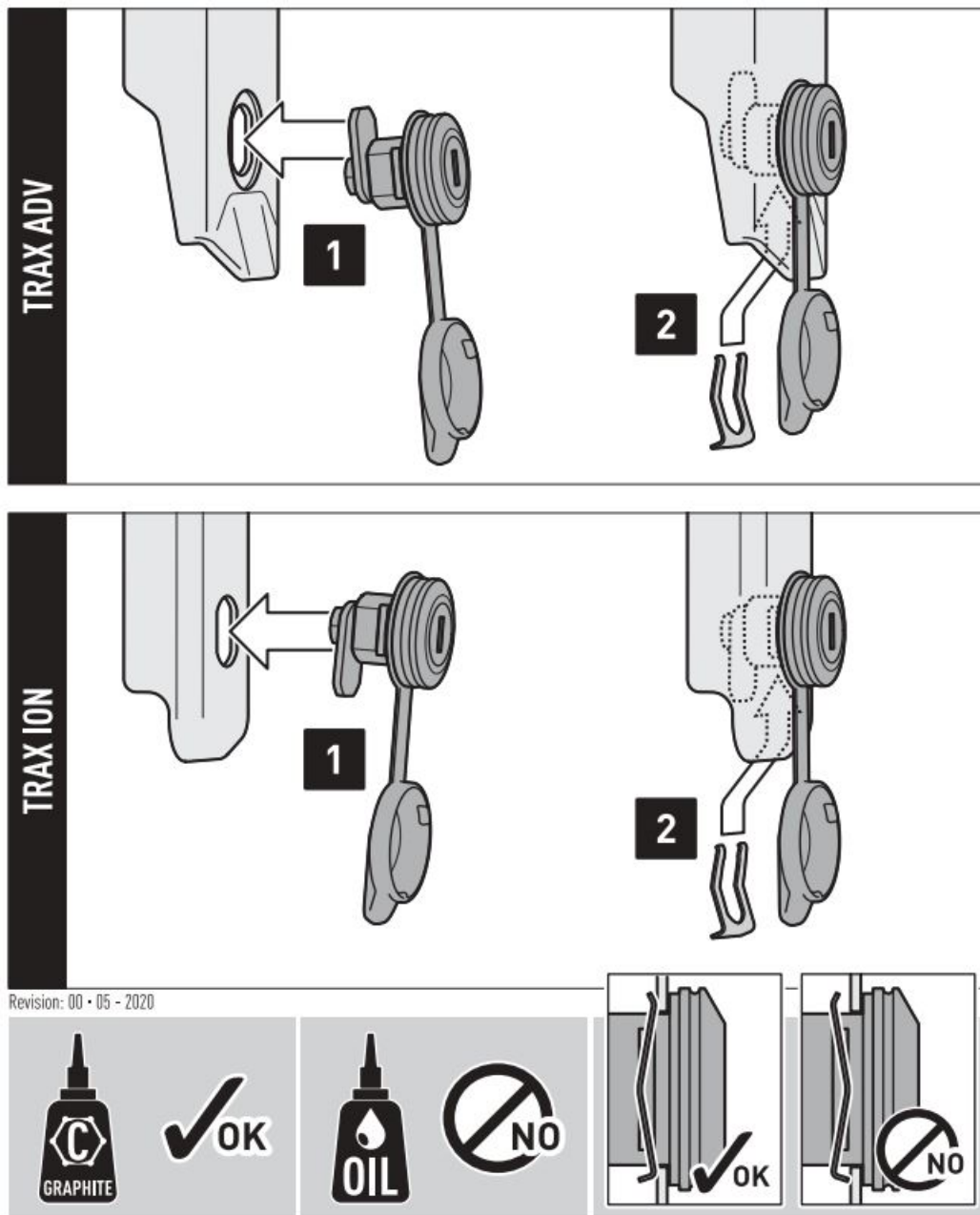
Aufnahmebolzen
Locating Bolt





Attachment of TRAX ADVENTURE ALU-BOX M & L

1. Lead the four openings of the mounting rail onto the locating bolts of the mounted QUICK-LOCK adapter plate/ STEEL-RACK adapter kit.
Then press the TRAX ADVENTURE ALU-BOX slightly forward, until it properly rests on QUICK-LOCK adapter plate/ STEEL-RACK adapter kit.
ATTENTION: Make sure that all four locating bolts rests on at the same time.
2. Place the latch over the latch hook and ...
3. close the latch; check the proper fit of the TRAX ADVENTURE ALU-BOX on the QUICK-LOCK Adapter Plate/ STEEL-RACK Adapter Kit.




SW-MOTECH GmbH & Co. KG
 Ernteweg 8/10
 35282 Rauschenberg Germany

Tel. / phone+ 49 (0)6425 / 8168 – 050
 Fax/ fax+ 49 (0)6425 / 8168 – 10
info@sw-motech.com
www.sw-motech.com

Copyright by
 SW-MOTECH GmbH & Co.KG

Errors and omissions excepted. Technical and design modifications are subject to change .

Documents / Resources

<div>ANBAUANLEITUNG</div> <div><div>GPT.01.950.70000/0</div><div><div>GPT.01.950.70000/0</div><div>GPT.01.950.70000/0</div><div>GPT.01.950.70000/0</div><div>GPT.01.950.70000/0</div></div></div> <div></div>	<div>SW-MOTECH GPT.01.950.70000 Trax ADV Top Case System [pdf] Instruction Manual</div> <div>GPT.01.950.70000, Trax ADV Top Case System, GPT.01.950.70000 Trax ADV Top Case System</div>
--	--