



SW-MOTECH GPT.01.808.70000/B TRAX ADV Topcase System 38L Instruction Manual

[Home](#) » [SW-MOTECH](#) » SW-MOTECH GPT.01.808.70000/B TRAX ADV Topcase System 38L Instruction Manual



Contents

- 1 SW-MOTECH GPT.01.808.70000/B TRAX ADV Topcase System 38L
- 2 Product Information
- 3 Product Usage Instructions
- 4 GPT.01.808.16000/B
 - 4.1 GENERAL INFORMATION
 - 4.2 PRODUCT SPECIFIC INFORMATION
 - 4.3 PARTS LIST
 - 4.4 MOUNTING
- 5 GPT.00.152.54100/B
 - 5.1 GENERAL INFORMATION
 - 5.2 PARTS LIST
 - 5.3 MOUNTING
- 6 ALK.00.733.15000/B
 - 6.1 GENERAL INFORMATION
 - 6.2 CARE
 - 6.3 PARTS LIST
 - 6.4 LID AND LOCK CYLINDER SET
 - 6.5 QUICK RELEASE FASTENER
 - 6.6 MOUNTING
- 7 Documents / Resources
- 8 Related Posts



SW-MOTECH GPT.01.808.70000/B TRAX ADV Topcase System 38L



Product Information

This product is a set of attachments designed for use with various models:

- GPT.01.808.70000/B
- GPT.01.808.16000/B
- GPT.00.152.54100/B
- ALK.00.733.15000/B
- ALK.00.165.16503

Product Usage Instructions

To properly use this product, follow the steps below:

1. Ensure that you have one of the compatible models mentioned above.
2. Identify the specific attachment you want to install.
3. Refer to the corresponding attachment's user manual for detailed installation instructions.
4. Follow the provided steps to securely attach the accessory to your compatible model.
5. Once attached, verify that the attachment is firmly in place and properly aligned.
6. If necessary, adjust the attachment according to the user manual instructions.
7. Once the attachment is correctly installed, you can now use your compatible model with the desired functionality.

It is important to note that proper installation and usage of the attachments are crucial for optimal performance and safety.

GPT.01.808.16000/B

STREET-RACK

Thank you for choosing this premium product from SW-MOTECH. Please visit our webshop for additional information, such as application charts and PDF mounting instructions. Any other documents that may be required (e.g. ABE certifications), are also available for download at our webshop. Installation and/or maintenance of this

product require good technical understanding! For your own safety SW-MOTECH recommends having installation and/or servicing carried out by a specialist workshop! SW-MOTECH assumes no liability for damage caused by improper installation and/or maintenance work!

Carefully follow all the directions given in the mounting instructions and pay attention to all relevant information in the vehicle manual during assembly. Nonconformance can lead to vehicle damage or even endanger the driver! These mounting instructions are written based on our current state of knowledge. Legal requirements for accuracy do not exist.

This product was developed for vehicles in their factory setting. Compatibility with original accessory parts or other manufacturers' accessory parts is not guaranteed. Furthermore, BEFORE installing this product, make sure that all moving parts (e.g. the chain) are in the original state of maintenance. Installed accessories can change the driving behavior and/or stability of your vehicle.

GENERAL INFORMATION

Observe the country-specific regulations concerning vehicle registration/ operation as well as TÜV regulations if applicable. If required, register installed parts in the vehicle documents through an appropriate inspection authority.

PREPARATION:

Read the mounting instructions carefully and make sure that all items of the parts list are included. Make sure that your vehicle is parked safely and cannot fall over. Turn off the engine and remove the ignition key. Let the motor/exhaust cool off if necessary. Disconnect the vehicle battery when working on the electrical system. Use appropriate tools. Have another person to help you.

MOUNTING:

All parts and connections removed from the vehicle must be reinstalled in accordance with the vehicle manufacturer's specifications or replaced by parts delivered by SW-MOTECH. Secure all threads, unless otherwise specified, with a medium-strength liquid thread locker. Torque specifications undefined by SW-MOTECH must be obtained from the vehicle manufacturer or by a specialist workshop!

FUNCTION CHECK:

After installation make sure that all parts and connections previously removed are properly replaced. Also make sure that no moving parts are obstructed and no function of the vehicle is hindered in any way. Cables and hoses must not rub and/or be pinched. Before starting to ride, perform a comprehensive check of all functions. After the first 50 km and then at regular intervals, check the tightening torque of all screw connections and the proper fit of the product.

PRODUCT SPECIFIC INFORMATION

Maximum Load	Maximum Speed
 5 KG (11 lbs)	 130 km/h (80 mph)

ATTENTION:

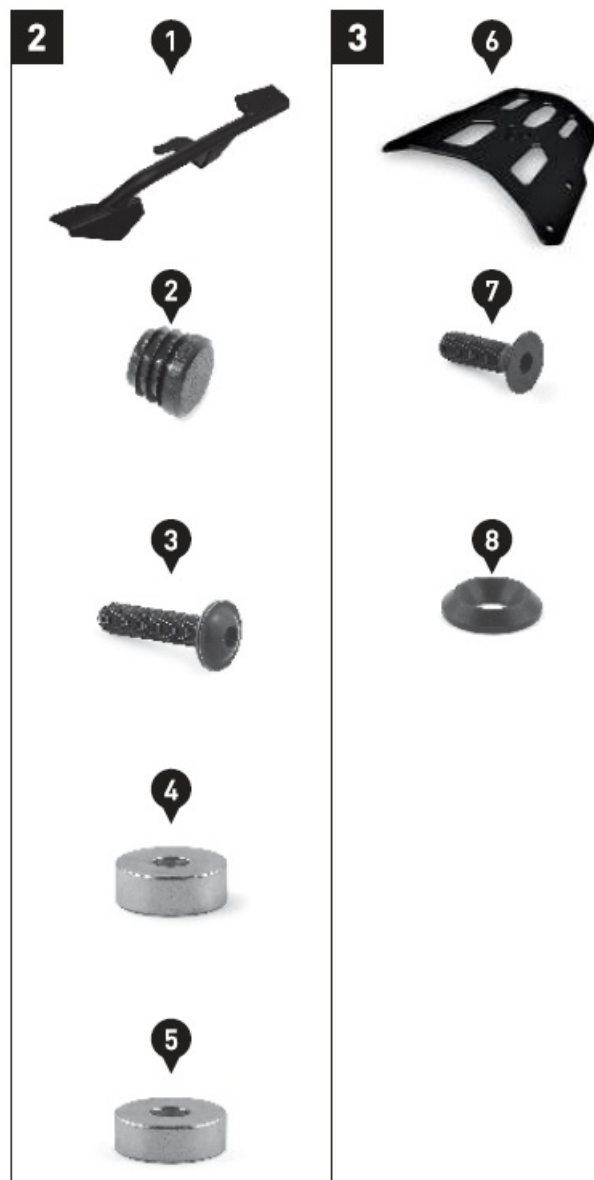
The indicated maximum load is inclusive the weight of topcase/luggage and adapter plate! The maximum vehicle load specified by the manufacturer must not be exceeded!

PARTS LIST

Schritt Step	Nr. No.	Art.-Nr. / Bezeichnung ^a Item No. / Description ^a	Part	Anzahl ^b Quantity ^b	N·m ^c
2	(1)	GPT.01.808.901.01 / 902.01	Mounting Strut; left / right	2 / 2	
	(2)	KES.RD.210.0300.02.GL	Plastic Plug	2 / 2	
	(3)	M8 x 30; ISO 7380	Lenshead Screw; black	4 / 4	OEM
	(4)	Ø 25 / Ø 8,4 / h 9	Spacer	2 / 2	
	(5)	Ø 25 / Ø 8,4 / h 8	Spacer	2 / 2	
3	(6)	GPT.00.200.050	Luggage Rack	1 / 1	
	(7)	M8 x 25; DIN 7991	Countersunk Screw; black	4 / 4	18
	(8)	Ø 8,4	Countersunk Washer; black	4 / 4	

Note:

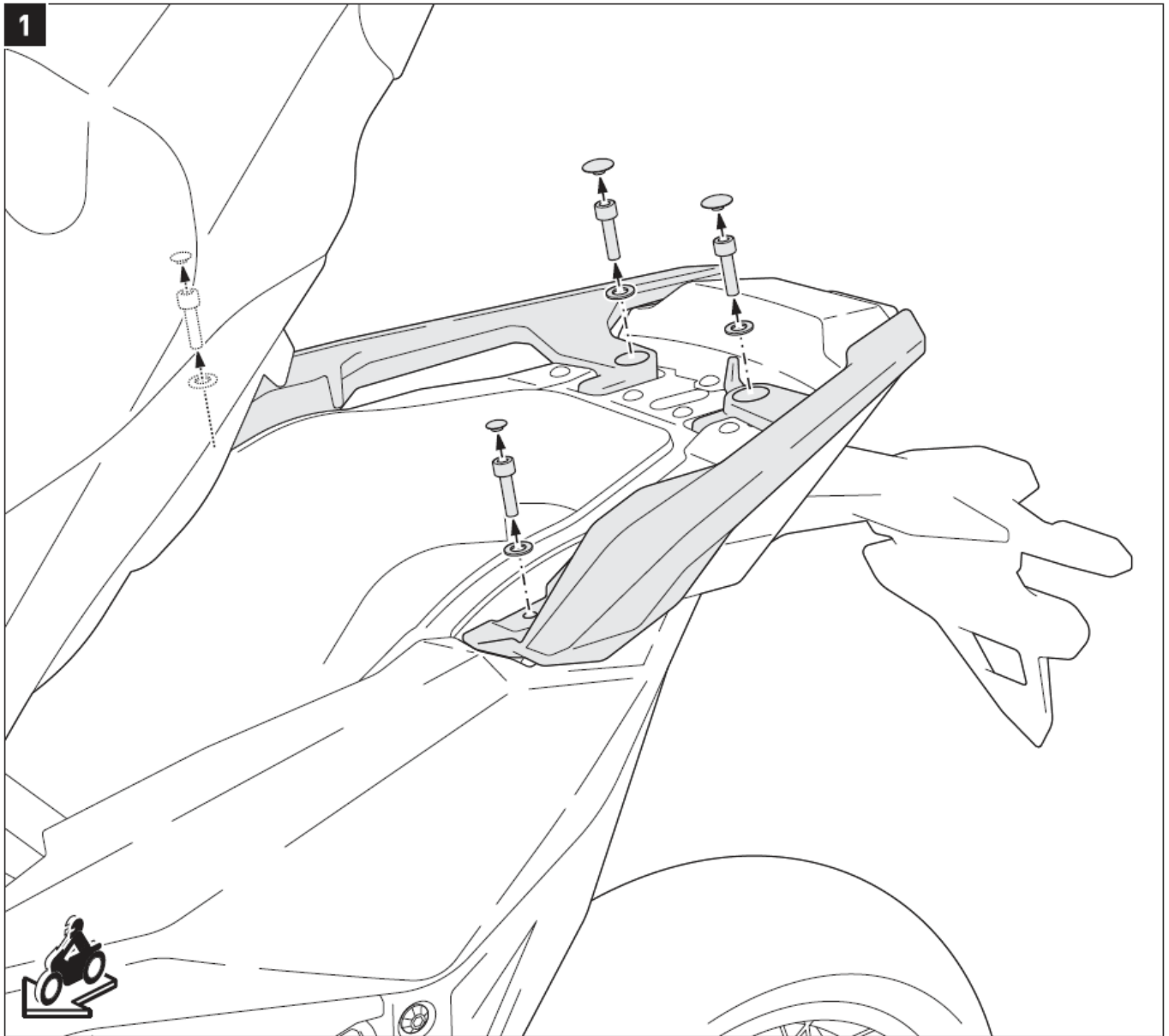
- All measurements in millimeters.
- The second number indicates the total quantity of the part in the delivery.
- No torque specifications: Use the torque defined by vehicle manufacturer! The standard torque in this table can be used as long as it is within the vehicle manufacturer's specifications.



MOUNTING

Open the bench.

Remove the original plastic caps, screws and passenger grips on both sides from the vehicle.



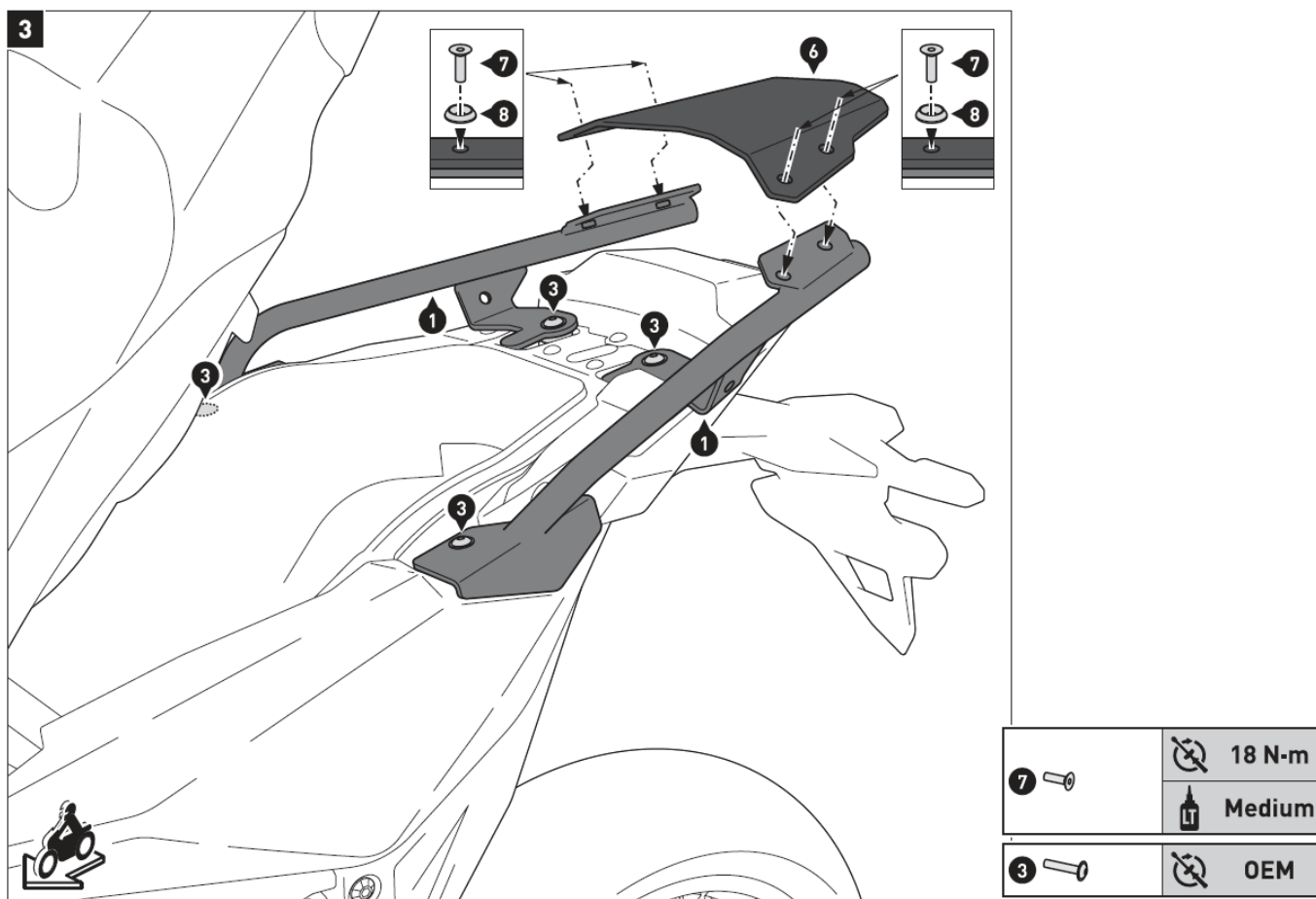
Insert the plastic plugs (2) into the ends of the mounting struts (1), as shown in the detail drawing. Attach the mounting struts (1) to the vehicle, as shown in the drawing.

ATTENTION:

Pay attention to the different heights (h) of the spacers (4) and (5) shown in the drawing!

ATTENTION: Use a liquid thread locker!

Do not fully tighten the screws yet.



GPT.00.152.54100/B

Adapter plate for STREET-RACK -TRAX ADV/ION/EVO

ENGLISH – Thank you for choosing this premium product from SW-MOTEC. Please visit our webshop for additional information, such as application charts and PDF mounting instructions. Any other documents that may be required (e.g. ABE certifications), are also available for download at our webshop. Installation and/or maintenance of this product requires good technical understanding! For your own safety, SW-MOTEC recommends having installation and/or servicing carried out by a specialist workshop! SW-MOTEC assumes no liability for damage caused by improper installation and/or maintenance work!

Carefully follow all the directions given in the mounting instructions and pay attention to all relevant information in the vehicle manual during assembly. Nonconformance can lead to vehicle damage or even endanger the driver! These mounting instructions are written based on our current state of knowledge. Legal requirements for accuracy do not exist.

This product was developed for vehicles in their factory setting. Compatibility with original accessory parts or other manufacturers' accessory parts is not guaranteed. Furthermore, BEFORE installing this product, make sure that all moving parts (e.g. the chain) are in the original state of maintenance. Installed accessories can change the driving behavior and/or stability of your vehicle.

GENERAL INFORMATION

Observe the country-specific regulations concerning vehicle registration/ operation as well as TÜV regulations if applicable. If required, register installed parts in the vehicle documents through an appropriate inspection authority.

PREPARATION:

Read the mounting instructions carefully and make sure that all items of the parts list are included. Make sure that your vehicle is parked safely and cannot fall over. Turn off the engine and remove the ignition key. Let the

motor/exhaust cool off if necessary. Disconnect the vehicle battery when working on the electrical system. Use appropriate tools. Have another person to help you.

MOUNTING:

All parts and connections removed from the vehicle must be reinstalled in accordance with the vehicle manufacturer's specifications or replaced by parts delivered by SW-MOTEC. Secure all threads, unless otherwise specified, with a medium-strength liquid thread locker. Torque specifications undefined by SW-MOTEC must be obtained from the vehicle manufacturer or by a specialist workshop!

FUNCTION CHECK:

After installation make sure that all parts and connections previously removed are properly replaced. Also make sure that no moving parts are obstructed and no function of the vehicle is hindered in any way. Cables and hoses must not rub and/or be pinched. Before starting to ride, perform a comprehensive check of all functions. After the first 50 km and then at regular intervals, check the tightening torque of all screw connections and the proper fit of the product.

PARTS LIST

[illegible]

- All measurements in millimeters.
- The second number indicates the total quantity of the part in the delivery.

- No torque specifications: Use the torque defined by vehicle manufacturer! The standard torque in this table can be used as long as it is within the vehicle manufacturer's specifications.



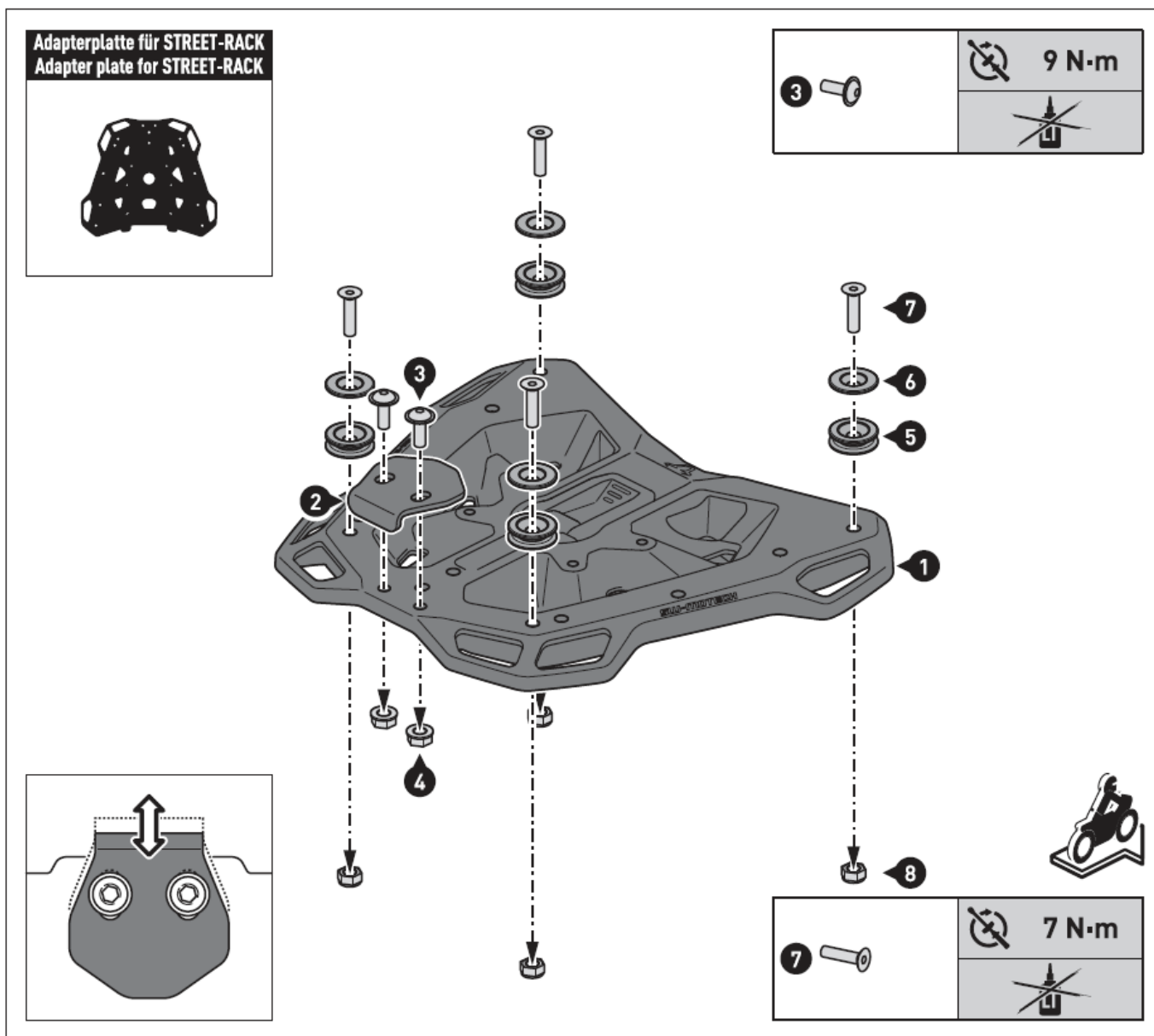
MOUNTING

Adapter plate for STREET-RACK

Attach the shown parts to the adapter plate for STREET-RACK (1). Tighten the screws as specified in the parts list.

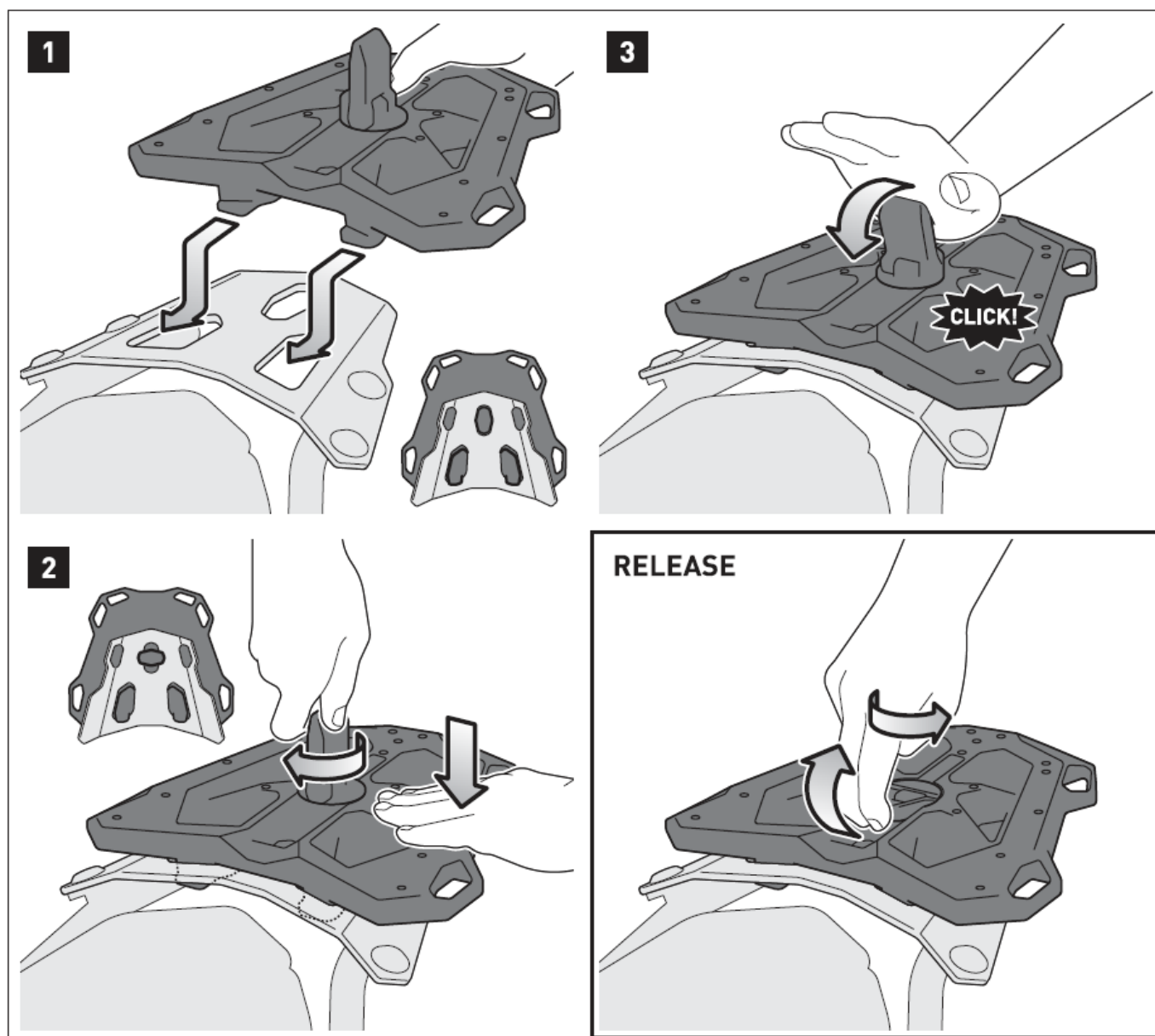
ATTENTION:

To ensure the proper fit of your TRAX ADV/EVO/ION topcase, adjust the latch hook (2) over the elongated holes (see detail drawing)! Make sure that the topcase's latch engages properly when mounted!



Mounting the adapter plate on the STREET-RACK.

- **Step [1]:** Slide the adapter plate (1) with the two hooks into the holes of your STREET-RACK (sold separately).
- **Step [2]:** Press the adapter plate (1) slightly downwards and turn the fastener 90 degrees until it fits into place.
- **Step [3]:** Finally, press the lock firmly down as shown in the drawing. To release the adapter plate, simply pull the fastener upwards and turn it to the starting position.



ALK.00.733.15000/B

TRAX ADVENTURE ALU-BOX

Thank you for choosing this premium product from SW-MOTECH.

Please visit our webshop for additional information, such as application charts and PDF mounting instructions. Any other documents that may be required (e.g. ABE certifications), are also available for download at our webshop. >> www.sw-motech.com.

Installation and/or maintenance of this product require good technical understanding. For your own safety SW-MOTECH recommends having installation and/or servicing carried out by a specialist workshop. SW-MOTECH assumes no liability for damage caused by improper installation and or maintenance work.

Carefully follow all the directions given in the mounting instructions. Also pay attention to all relevant information in the vehicle manual during assembly. Nonconformance can lead to vehicle damage or even endanger the driver! Please keep the mounting instructions as reference. This product was developed for vehicles in their original condition. Compatibility with original accessory parts or other manufacturers accessory parts is not guaranteed. Installed accessories can change driving behaviour and/or stability of your vehicle.

GENERAL INFORMATION

Observe any country-specific legal or TUV regulations. If required, enter the installed parts into the vehicle documents with the appropriate inspection authority.

SECURITY

Please pay attention to the following information concerning the TAX ADVENTURE ALU-BOX:

The TAX ADVENTURE ALU-BOX is designed exclusively for mounting on SW-MOTEC QUICK-LOCK side carriers, QUICK-LOCK adapter plate and STEEL-RACK adapter kit.

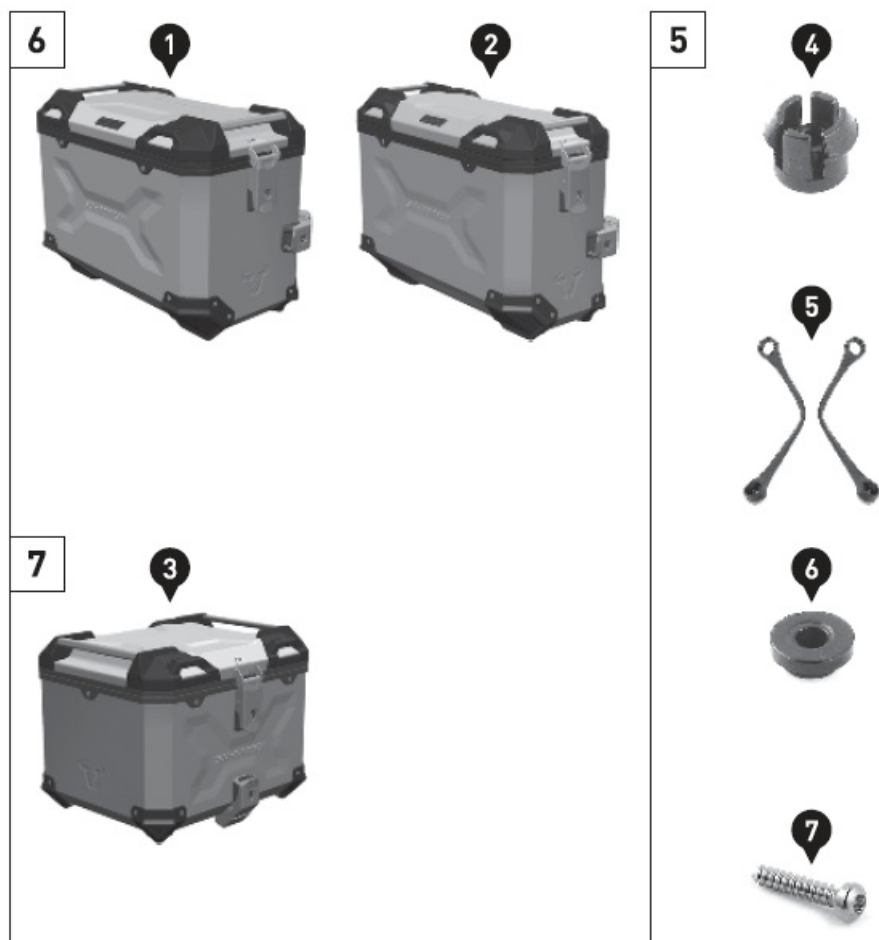
Modifications made to the cases will void any warranty.

- **ATTENTION:** Riding with TAX ADVENTURE ALU-BOX may affect the motorcycle's driving and braking performance.
- **ATTENTION:** TRAX ADVENTURE ALU-BOXES M & L must be used in pairs. Make sure the weight is evenly distributed between left and right side case.
- **ATTENTION:** Maximum load: Please refer to the mounting instructions of the SW-MOTEC QUICK-LOCK side carrier, ALU-RACK or STEEL-RACK. Maximum speed with mounted cases: 130 km/h (80 mph).
- **ATTENTION:** Make sure that the TAX ADVENTURE ALU-BOX is properly attached to the particular adapter and fully engaged to all four mounting points! ALL latches of the TRAX ADVENTURE ALU-BOX must be locked BEFORE riding with the TraX ® EVO / TAX ADV lock cylinder set (sold separately) and remain closed while riding. Improperly mounted cases run the risk of detaching during transport.

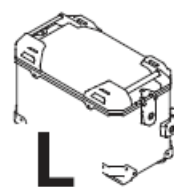

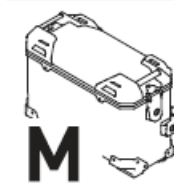

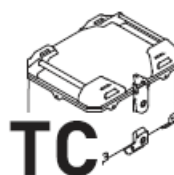


CARE

To clean the TRAX ADVENTURE ALU-BOX, use warm, soapy water and a soft, clean cloth. Rinse with clean water. Do NOT use strong cleaning agents, rough cleaning tools or high pressure washer!

PARTS LIST



TECHNICAL DETAILS

 <p>L</p>	<p>Maße/Size</p> 	<p>Volumen Volume</p> <p>45 l</p>	<p>Eigengewicht Empty weight</p> <p>5,4 kg</p>
 <p>M</p>	<p>Maße/Size</p> 	<p>Volumen Volume</p> <p>37 l</p>	<p>Eigengewicht Empty weight</p> <p>5,1 kg</p>
 <p>TC</p>	<p>Maße/Size</p> 	<p>Volumen Volume</p> <p>38 l</p>	<p>Eigengewicht Empty weight</p> <p>4,6 kg</p> <p>Kapazität Capacity</p> <p> 1x</p>

www.sw-motech.com

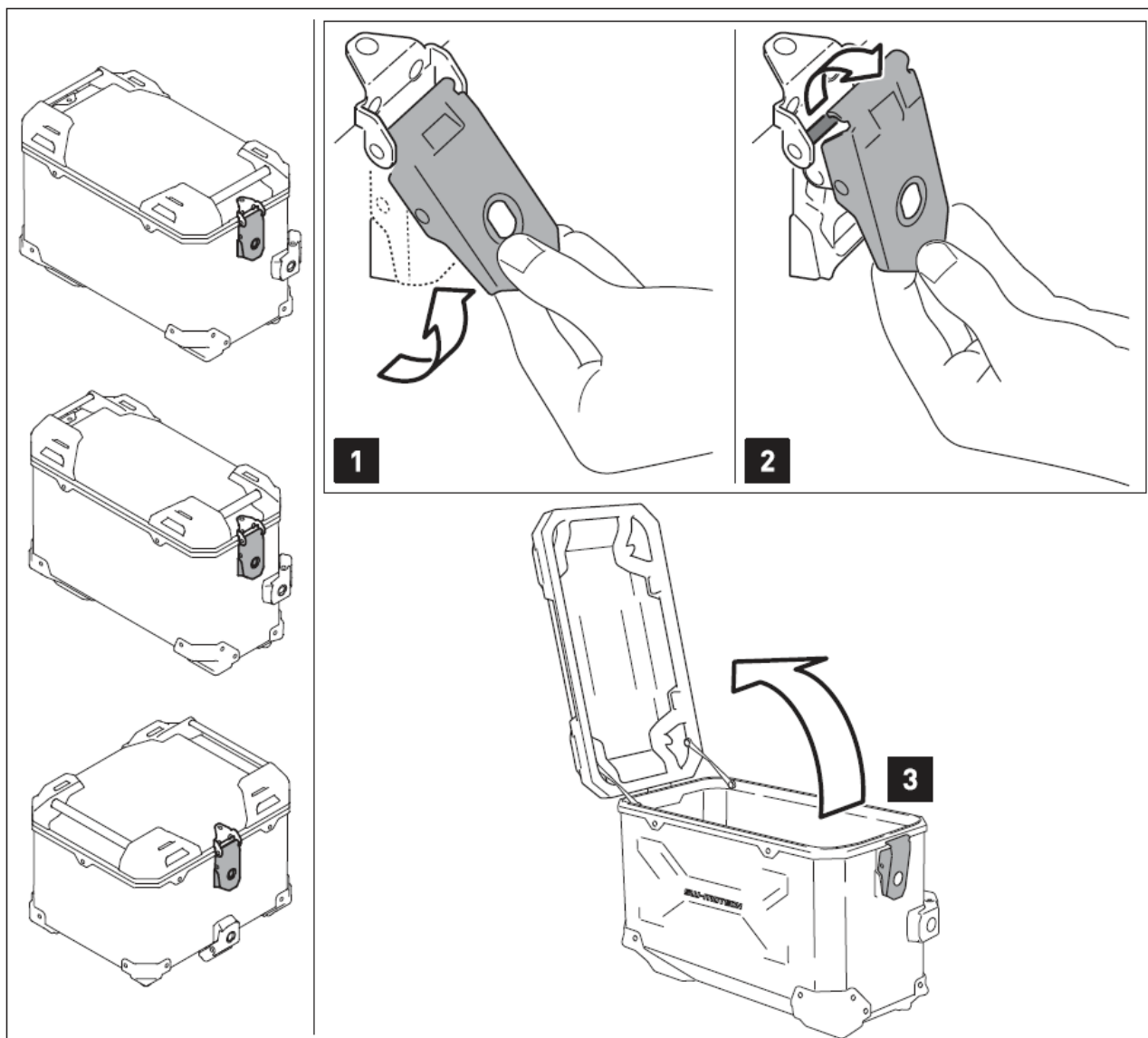
Please visit our webshop for application charts and compatible accessories.

LID AND LOCK CYLINDER SET

Open the lid (TRAX ADV M / L / topcase)

1. Pull the latch of the lid upwards
2. and remove it from the latch bar.

3. Open the lid.



Insertion of the TraX® EVO / TRAX ADV lock cylinder set
(TRAX ADV M / L / Topcase)

1. Insert the lock cylinders into the latches.
2. Secure the lock cylinders with the clamping plates.

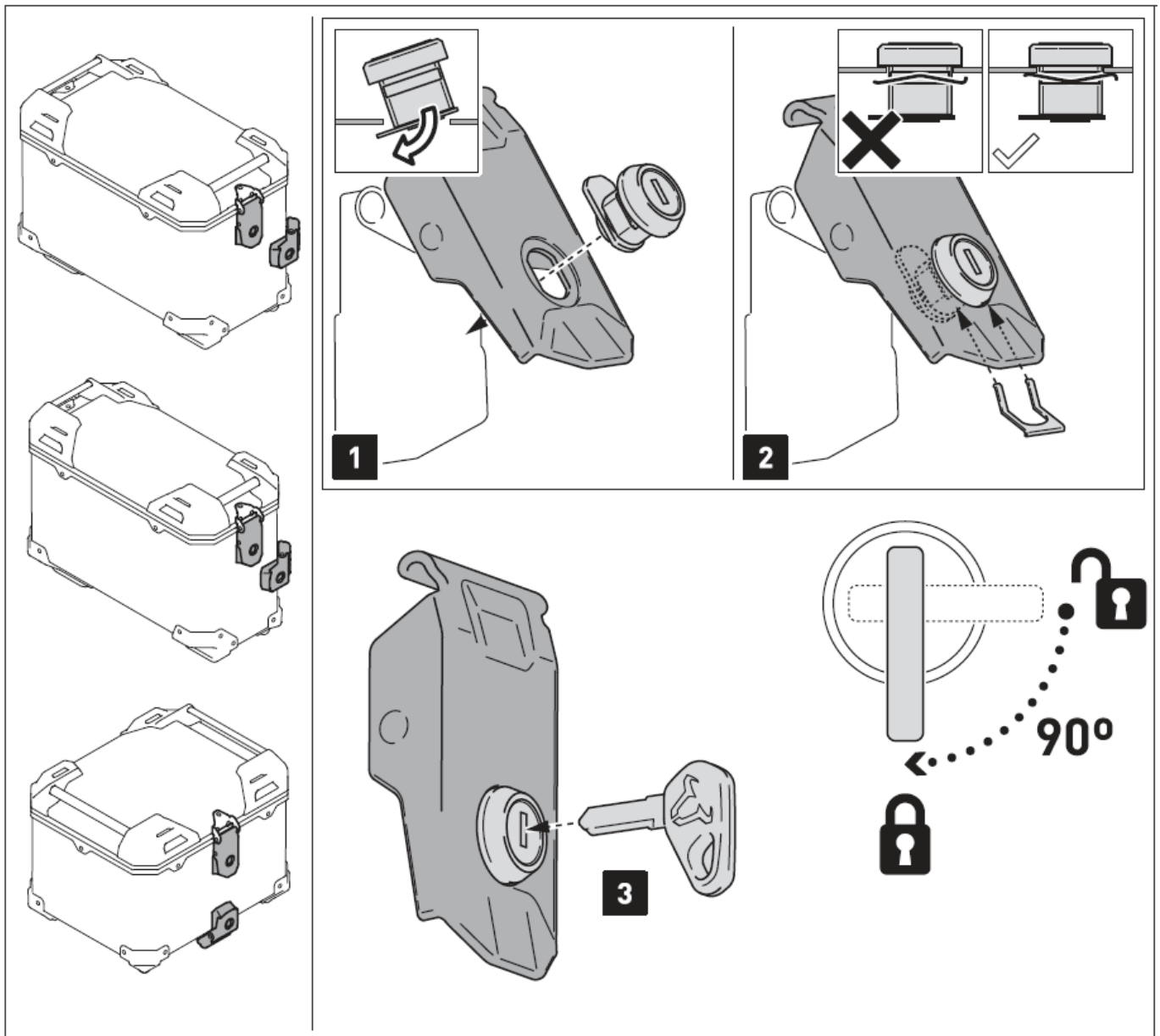
ATTENTION: Pay attention to the correct alignment of the clamping plates (as shown in the detail drawings).

3. Insert the keys into the lock cylinders; open or close the lock cylinder as shown in the schematic drawing.

ATTENTION:

Use for lubrication graphite powder ONLY!

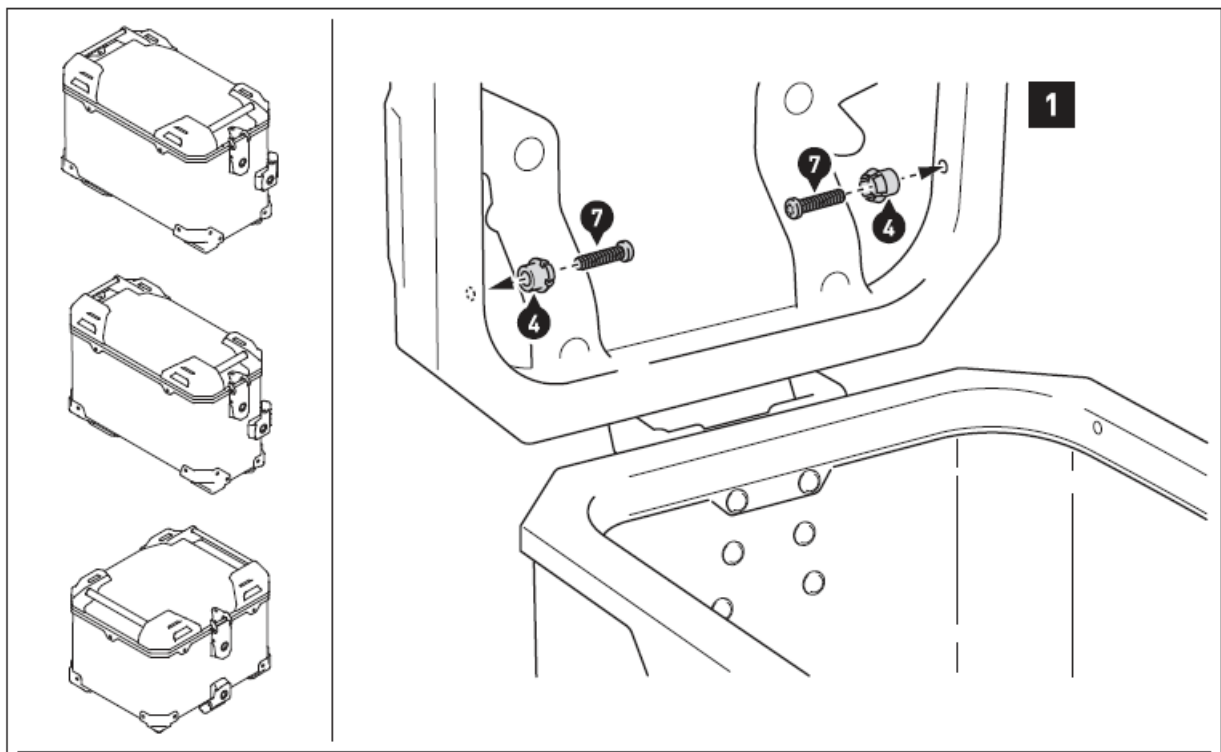
- Sold separately.



LID LIMITER

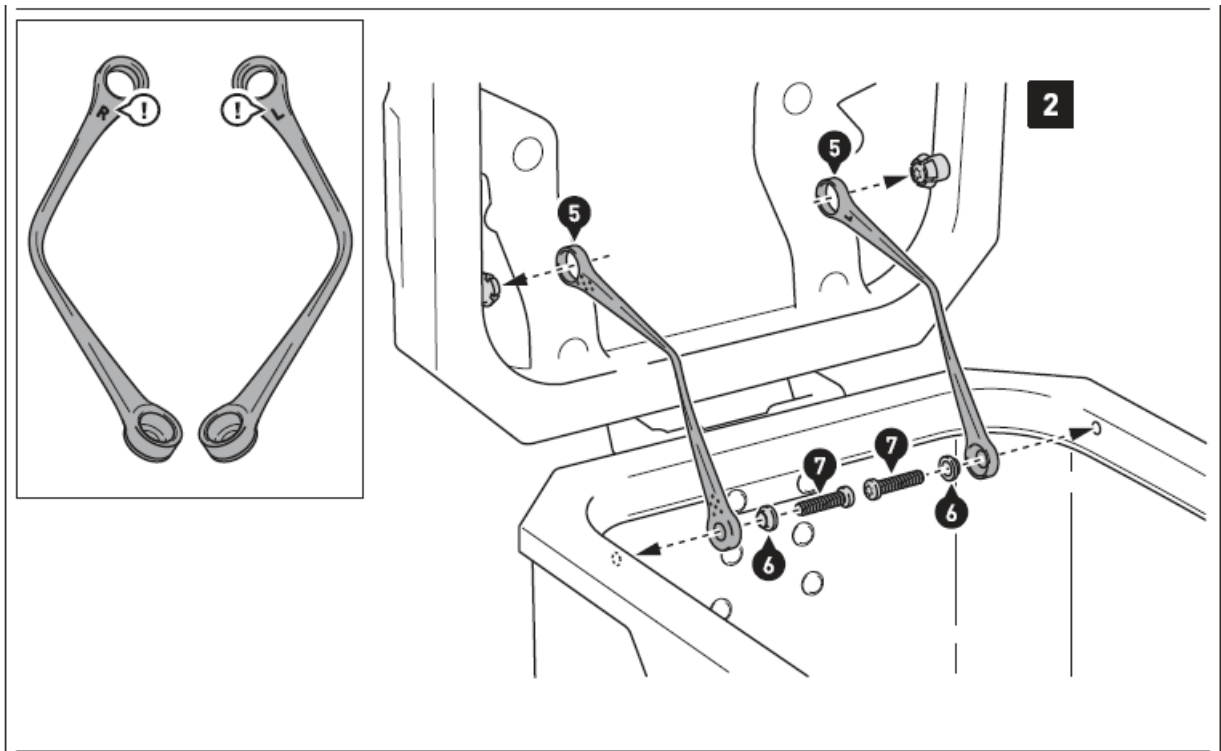
Mounting the lid limiters (TRAX ADV M / L / top case)

1. Open the lid. Attach the snap-fit (4) with the shown parts at the lid frame. Tighten the screws as specified in the parts list.

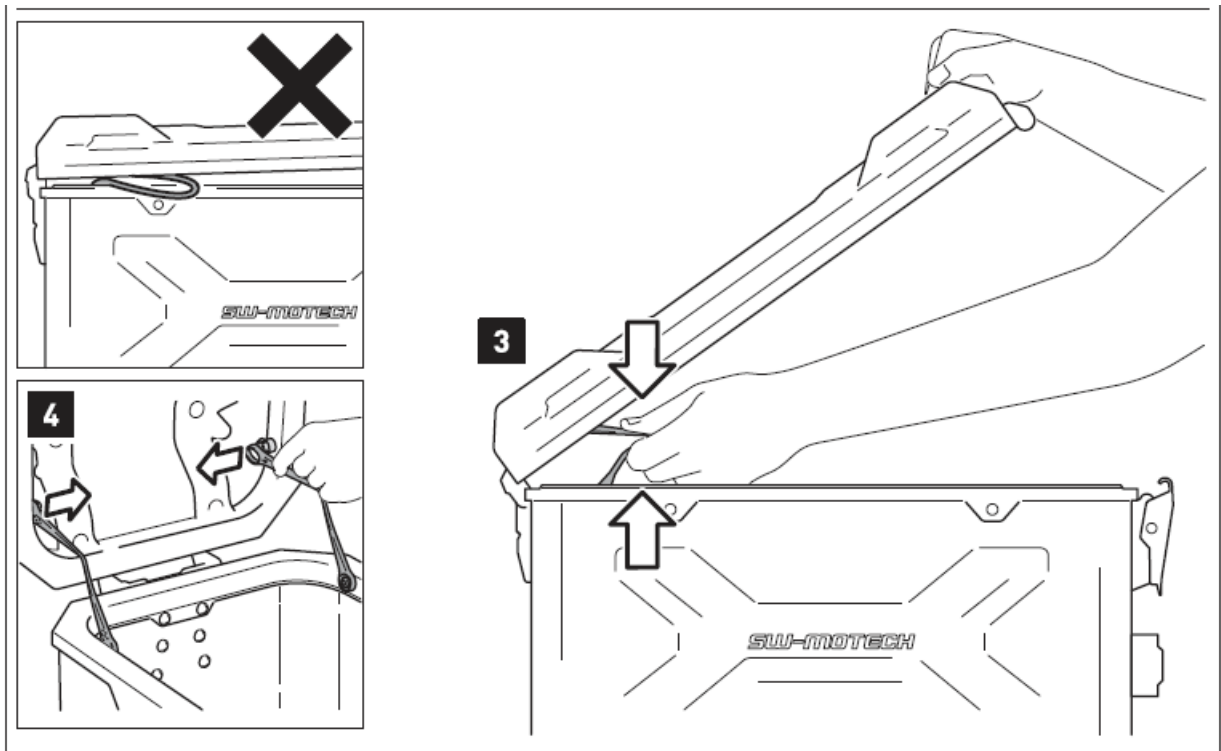


2. Attach the lid limiters (5) with the shown parts at the case frame.

NOTE: Pay attention to left-right specifications for the limiters (in driving direction). Tighten the screws as specified in the parts list. Press the lid limiters onto the snap-fits.



3. Before closing the lid for the first time, the lid limiters must be compressed as shown in the drawing. While closing the lid, make sure that the lid limiters are not pinched between lid and case.
4. To remove the lid from the case (as shown on page 5), remove the lid limiters from the snap-fits first.



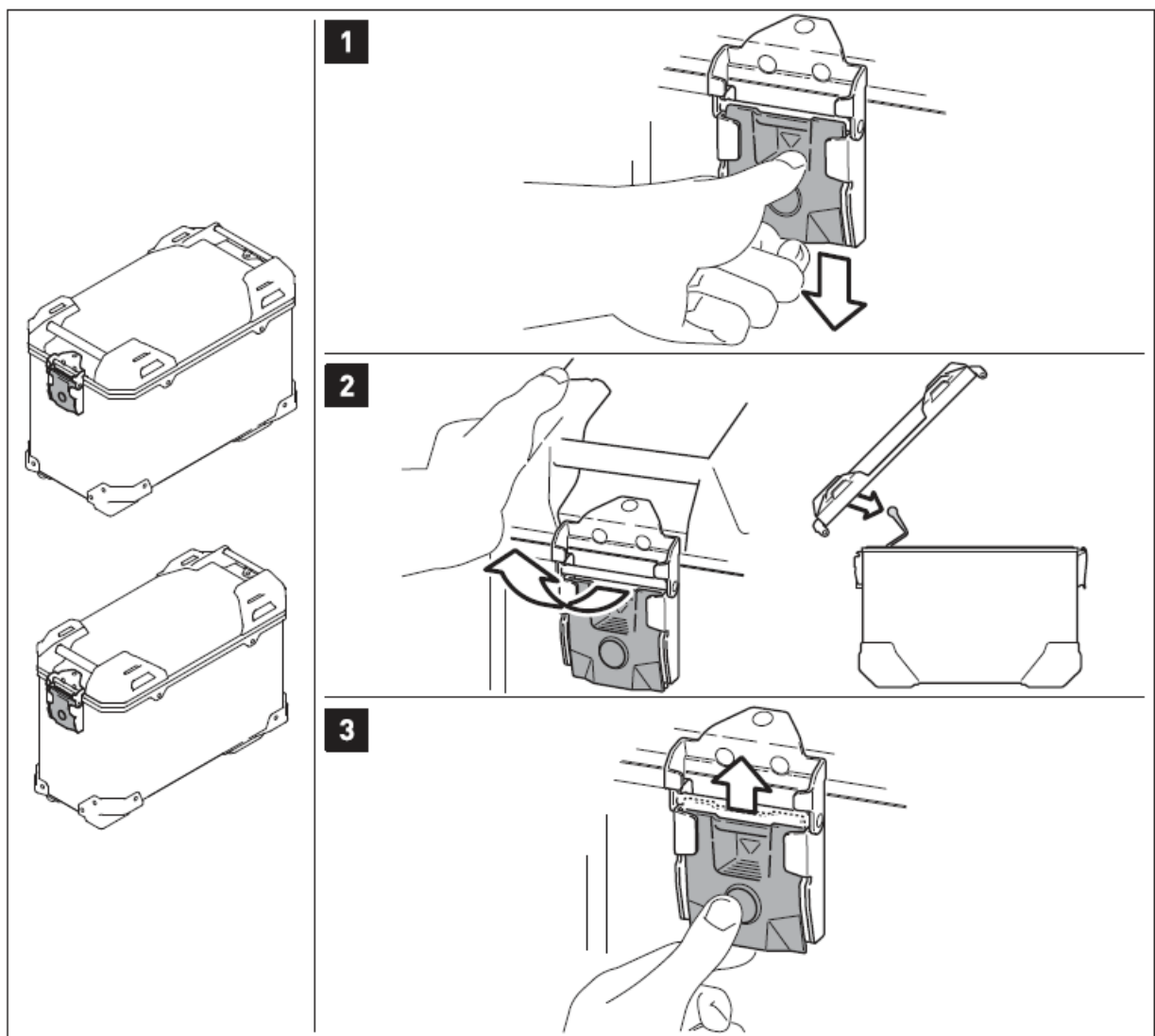
QUICK RELEASE FASTENER

Removing the lid (TRAX ADVENTURE M / L)

1. Press the quick release fastener down until it clicks into place and the button pops out.
2. Then remove the lid from the case.

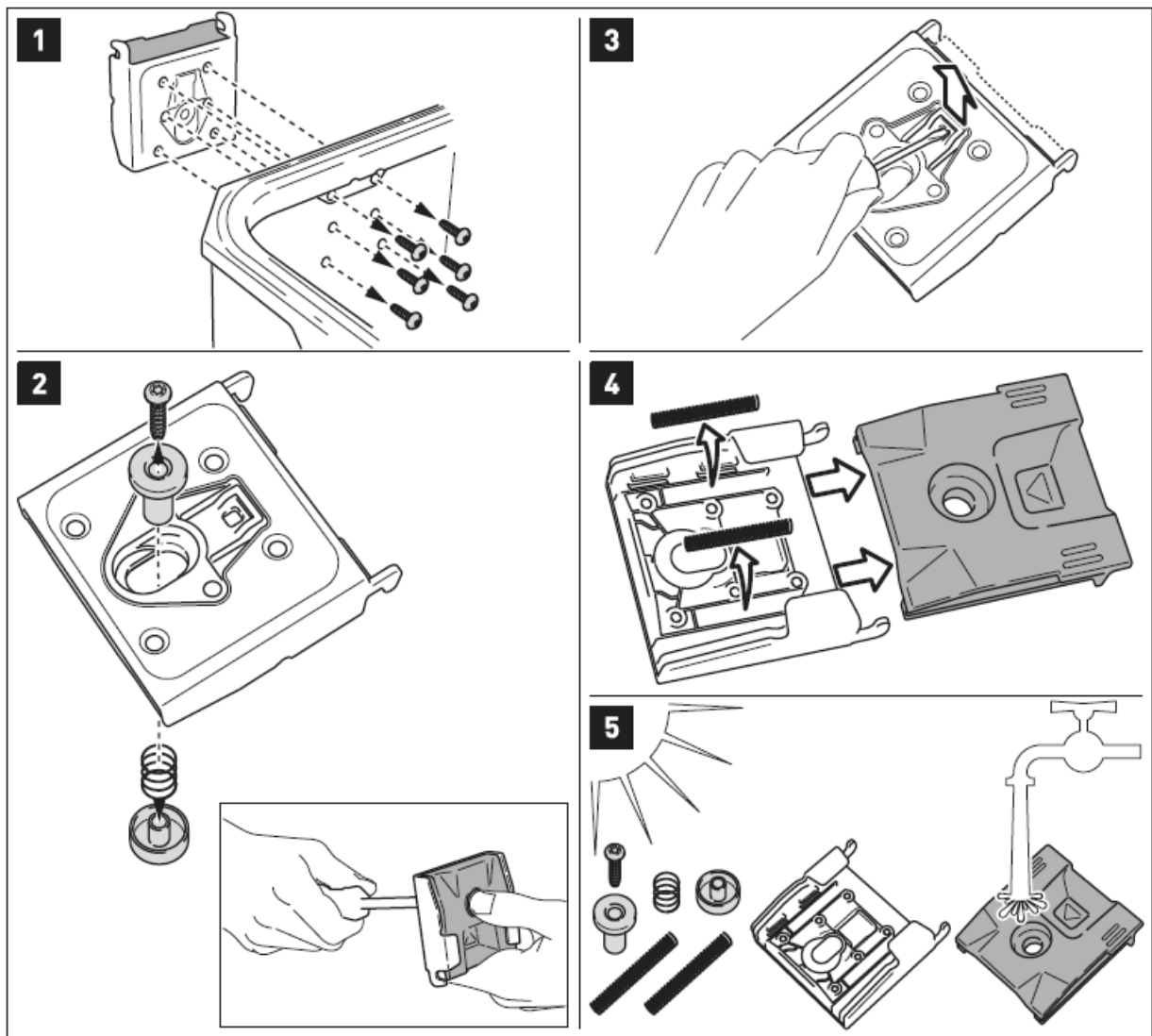
NOTE: If you have installed the lid limiters (5), they must be detached before removing the lid las.

3. Press the button of the quick release fastener to lock the replaced lid in place. Make sure that the quick release fastener snaps above.



Maintenance and cleaning of the quick release fastener (TRAX ADVENTURE M / L)

1. Loosen the six screws on the inner side of the case and remove the quick release fastener.
2. Loosen the screw of the button (fix with thumb and index finger).
3. Loosen the shown clip carefully and ...
4. Remove the quick release fastener and springs from the mounting plate.
5. Clean the components with clean water and let it air dry. Reattach all parts in reversed order.

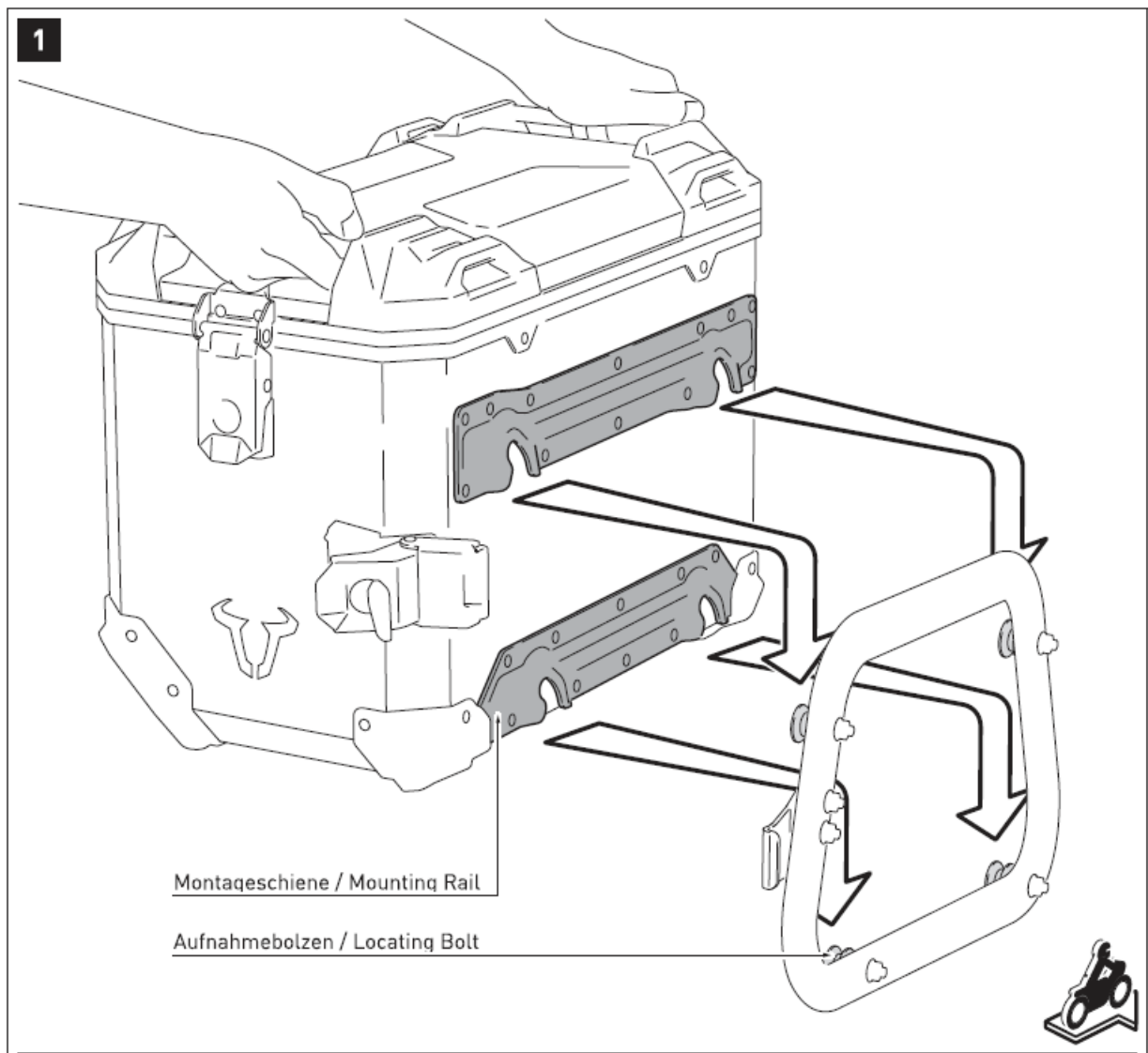


MOUNTING

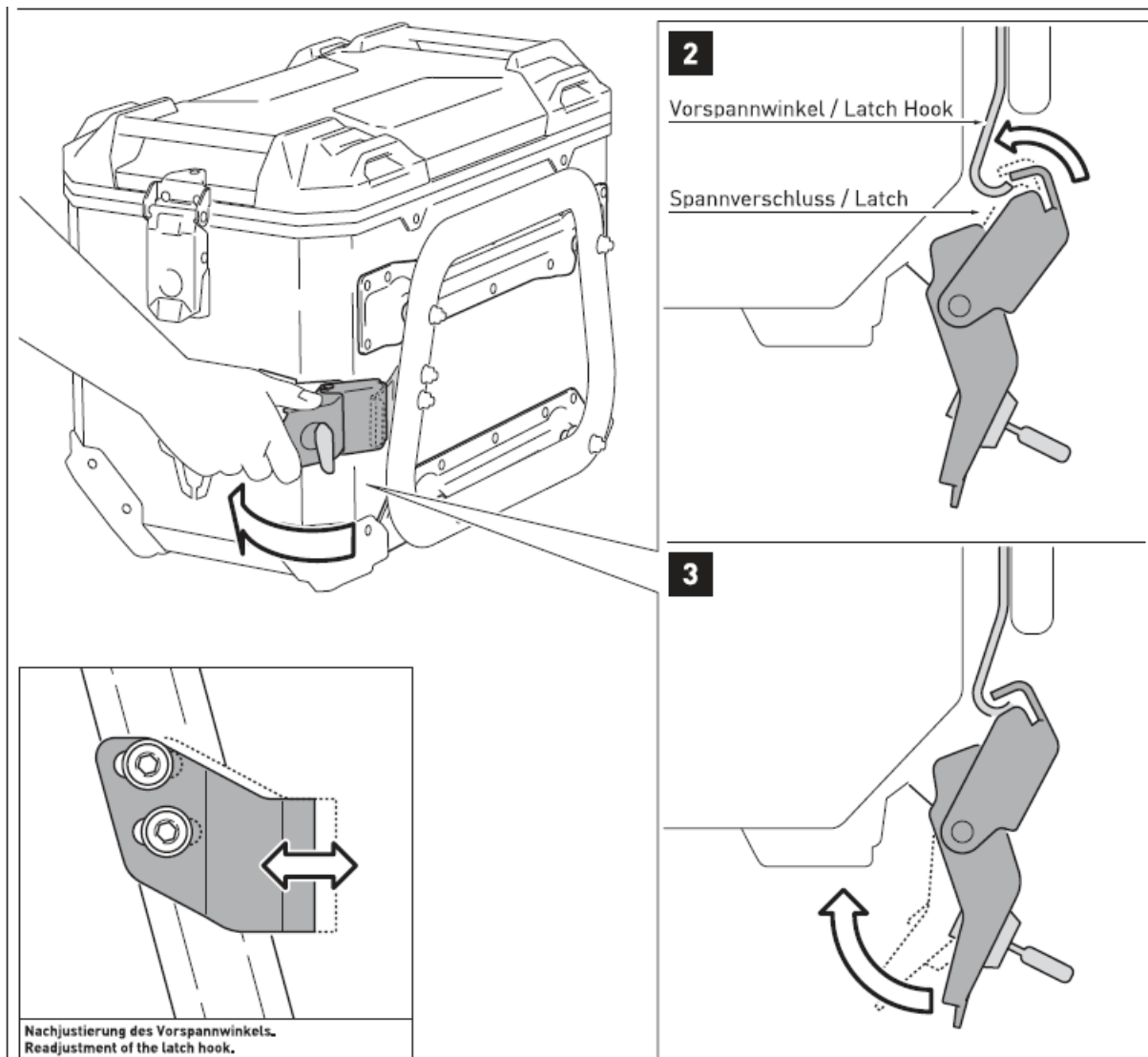
Attachement of TRAX ADVENTURE ALU-BOX M & L

1. Lead the four openings of the mounting rails onto the locating bolts of the mounted QUICK-LOCK adapter kit. Then press the TRAX ADVENTURE ALU-BOX slightly downward, until it properly rests on QUICK-LOCK side carrier.

ATTENTION: Make sure that all four locating bolts rests on at the same time.



2. Place the latch over the latch hook and
 3. close the latch; check the proper fit of the TAX ADVENTURE ALU-BOX on the QUICK-LOCK side carrier.
- ATTENTION:** Make sure the closed latch is under sufficient tension! If not the latch hook must be readjusted!
- ATTENTION:** Secure the TRAX ADVENTURE ALU-BOX with the separately available TraX ® EVO/TRAX ADVENTURE lock cylinder set at the QUICK-LOCK side carrier before riding!

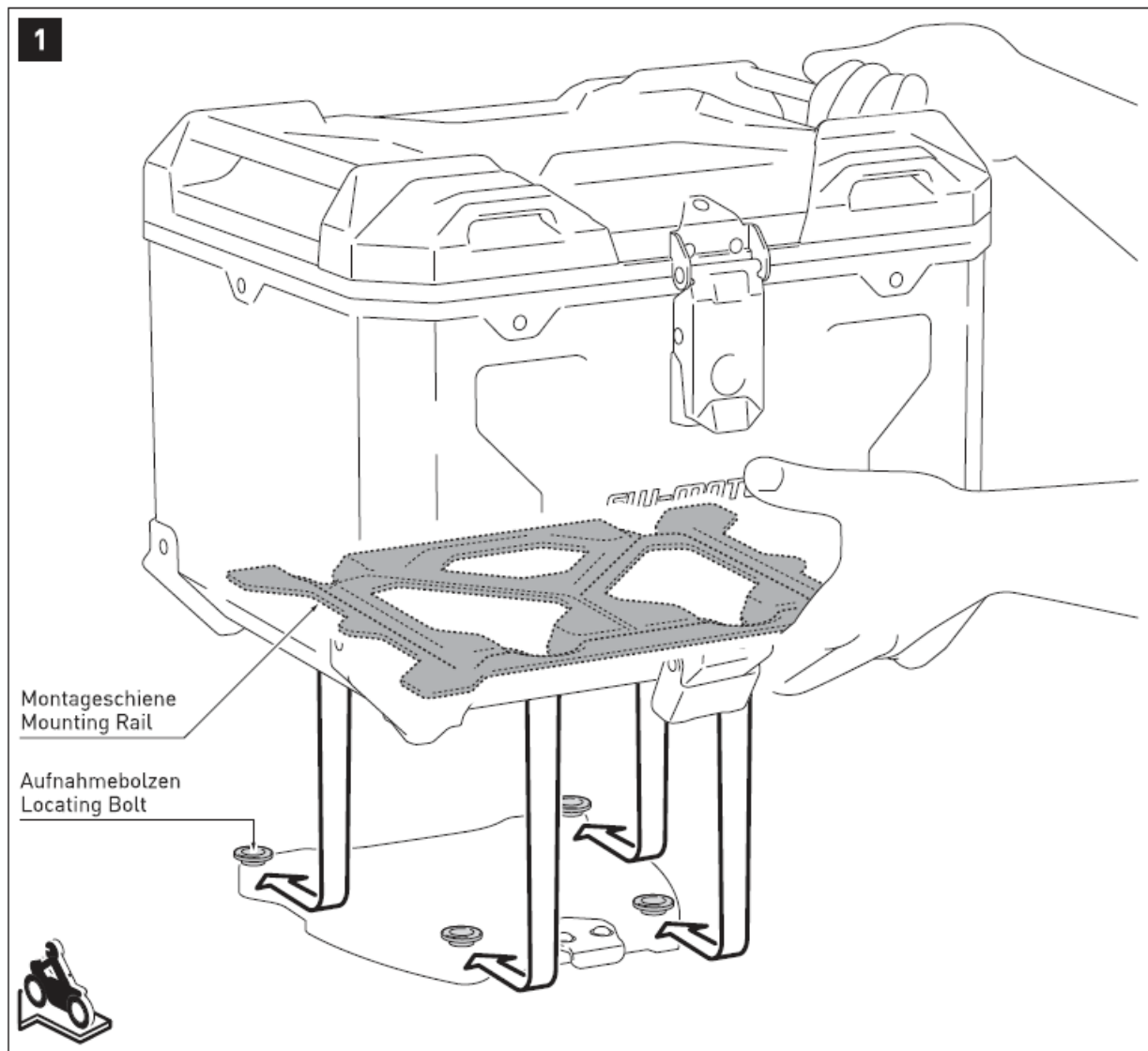


Attachement of TRAX ADVENTURE ALU-BOX M & L

1. Lead the four openings of the mounting rail onto the locating bolts of the mounted QUICK-LOCK adapter plate / STEEL-RACK adapter kit.

Then press the TRAX ADVENTURE ALU-BOX slightly forward, until it properly rests on QUICK-LOCK adapter plate / STEEL-RACK adapter kit.

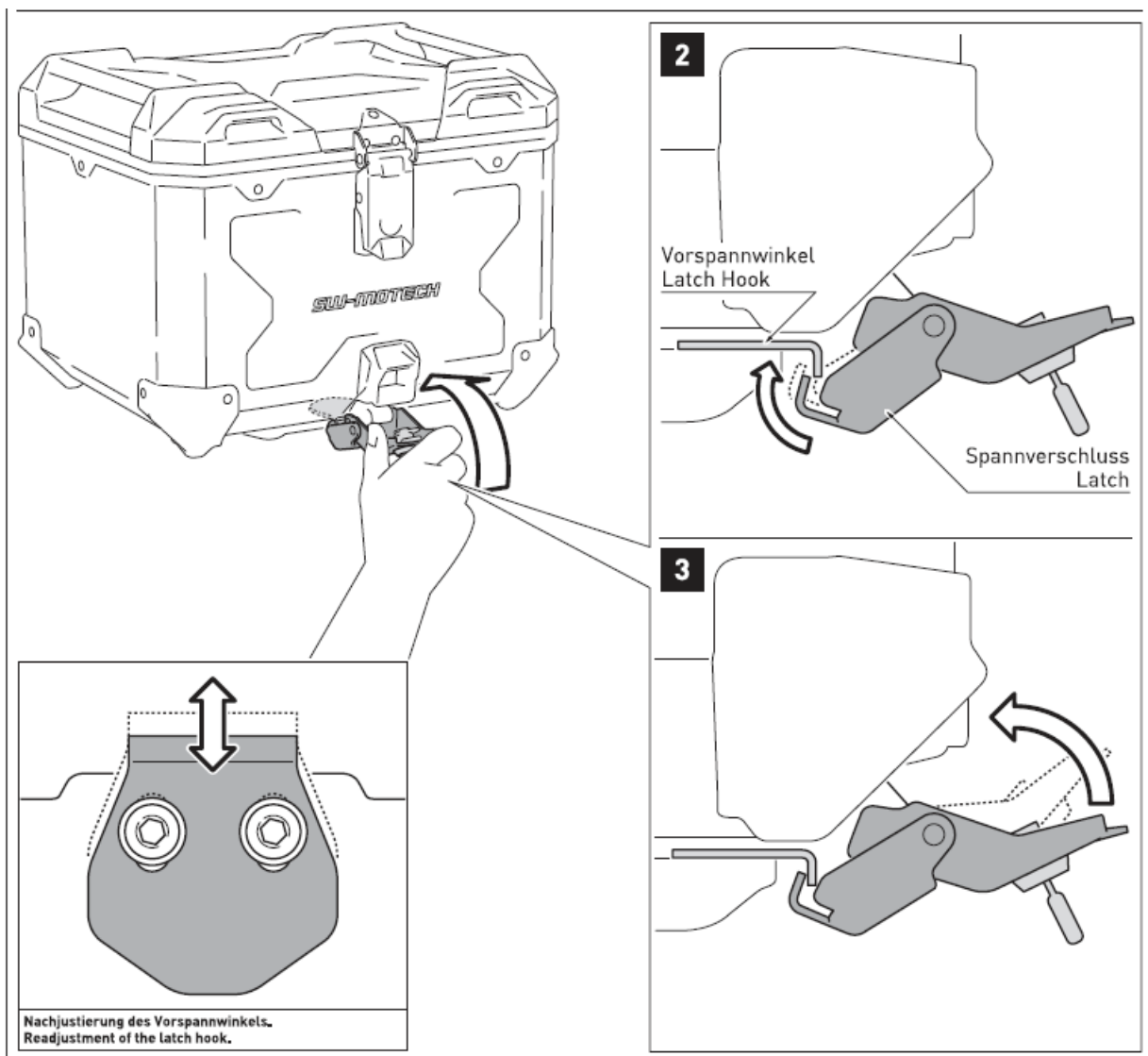
ATTENTION: Make sure that all four locating bolts rests on at the same time.



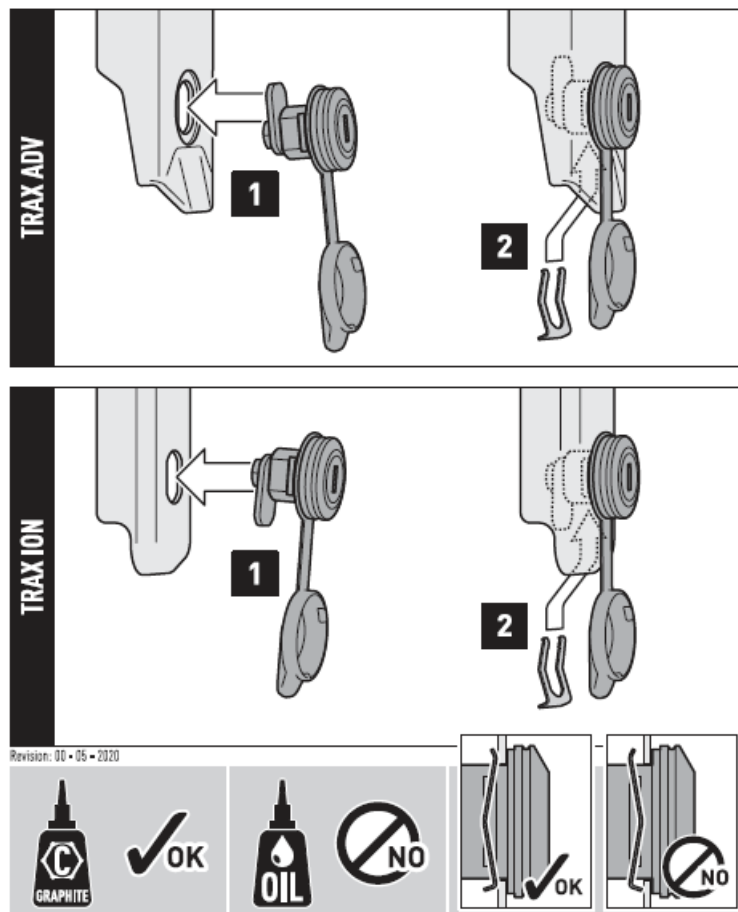
2. Place the latch over the latch hook and .
3. Close the latch; check the proper fit of the TRAX ADVENTURE ALU-BOX on the QUICK-LOCK Adapter Plate / STEEL-RACK Adapter Kit.

ATTENTION: Make sure the closed latch is under sufficient tension! If not the latch hook must be readjusted!

ATTENTION: Secure the TRAX ADVENTURE ALU-BOX with the separately available TraX ® EVO TRAX ADVENTURE lock cylinder set at the QUICK-LOCK adapter plate / STEEL-RACK adapter kit before riding!



Caution



Errors and omissions are expected. Technical and design modifications are subject to change.

Copyright by

SW-MOTECH GmbH & Co. KG.

SW-MOTECH GmbH & Co. KG

Ernteweg 7- 10 35282 Rauschenberg Germany.

Tel./phone + 49 (0)6425 / 8168 – 050

Fax/fax + 49 (0)6425 / 8168 – 10

info@sw-motech.com.

www.sw-motech.com.

Documents / Resources

<p>ANBAUANLEITUNG</p> <p>GPT.01.808.70000/B</p> <p>GPT.01.808.70000/B GPT.01.808.70000/B GPT.01.808.70000/B GPT.01.808.70000/B</p> <p>SW-MOTECH</p>	<p>SW-MOTECH GPT.01.808.70000/B TRAX ADV Topcase System 38L [pdf] Instruction Manual GPT.01.808.70000 B TRAX ADV Topcase System 38L, GPT.01.808.70000 B, TRAX ADV Topc ase System 38L, Topcase System 38L, System 38L</p>
-----------------------------------------------------------------------------------------------------------------------------------------------------------------	---------------------------------------------------------------------------------------------------------------------------------------------------------------------------------------------------------------------------------------------------