



SVEN GC-400 Wired Gamepad Instruction Manual

[Home](#) » [SVEN](#) » SVEN GC-400 Wired Gamepad Instruction Manual 

Contents

- [1 SVEN GC-400 Wired Gamepad](#)
- [2 BUYER RECOMMENDATIONS](#)
- [3 DESCRIPTION](#)
- [4 SAFETY PRECAUTIONS](#)
- [5 PACKAGE CONTENTS](#)
- [6 SPECIAL FEATURES](#)
- [7 SYSTEM REQUIREMENTS](#)
- [8 7. DESCRIPTION OF CONSTRUCTION](#)
- [9 CONNECTION AND INSTALLATION](#)
- [10 TROUBLESHOOTING](#)
- [11 Documents / Resources](#)
- [12 Related Posts](#)

SVEN

SVEN GC-400 Wired Gamepad



Congratulations on the purchase of the Sven gamepad!

Please read this Operation Manual before using the unit and retain this Operation Manual in safe place for future reference.

COPYRIGHT

SVEN PTE. LTD. Version 1.0 (27.09.2021). This Manual and the information contained in it are copyrighted. All rights reserved.

TRADEMARKS

All trademarks are the property of their legal holders.

NOTICE OF RESPONSIBILITY RESTRICTION

Despite the exerted efforts to make this Manual more exact, some discrepancies may occur. The information of this Manual is given on «as is» terms. The author and the publisher do not bear any liability to a person or an organization for loss or damages which have arisen from the information, contained in the given Manual.

BUYER RECOMMENDATIONS

- Unpack the device carefully. Make sure there are no accessories left in the box. Check up the device for damage; if the product was damaged during transportation, address the firm which carried out the delivery; if the product functions incorrectly address the dealer at once.
- Check up on the package contents and availability of the warranty card. Make sure the warranty card has a shop stamp, a legible signature or the seller's stamp and purchase date, and the number of the wall mount corresponds to that in the warranty card. Remember: in case of warranty card loss or discrepancy of numbers you forfeit the right for warranty repairs.
- Shipping and transportation equipment is permitted only in the original container.
- Does not require special conditions for realization.
- Dispose of in accordance with regulations for the disposal of household and computer equipment.
- The date of manufacture of the product is indicated on the box.

DESCRIPTION

Gamepads can be used in different games such as simulators, arcades, shooter games etc. Vibration feedback imparts a feeling of realistic experience during games. Rubber coating and ergonomic construction of GC-400 enhance the accuracy of its operation during games.

SAFETY PRECAUTIONS

- Do not disassemble or repair the device on your own. Maintenance and repairs should be carried out by qualified service centre staff only.
- Protect the device from direct impact of high humidity, dust, strong magnetic fields, vibrations, high temperatures, toxic liquids and gases.
- Instructions for device maintenance: for cleaning the case of the device please use clean soft cloth. Do not use such solvents as gasoline or spirit for cleaning, since these solvents can damage the surface of the device.
- Do not drop the device to avoid damaging it.

PACKAGE CONTENTS

- Gamepad — 1 pc
- Operation Manual — 1 pc
- Warranty card — 1 pc

SPECIAL FEATURES

- The ergonomic design of the gamepad
- Supports: Windows 7/8/10, PS3, PS4
- USB Interface
- Turbo function for continuous firing
- 4 axes, D-Pad, 2 mini joysticks and 11 buttons

SYSTEM REQUIREMENTS

- USB port available
- Windows 7/8/10, PS3, PS4 Operational System

7. DESCRIPTION OF CONSTRUCTION

(Fig. 1)

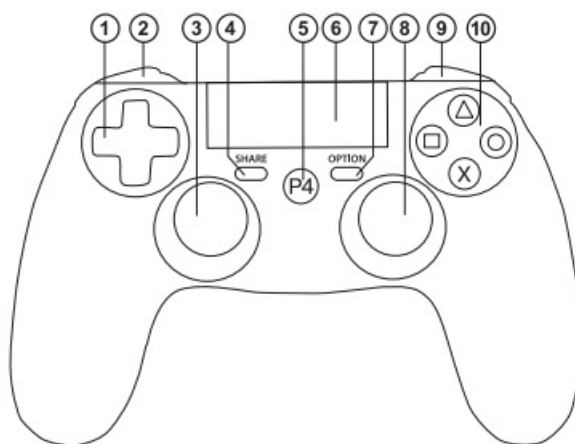
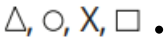


Fig. 1

- D-PAD
- L1, L2
- LS (L3)
- SHARE
- HOME (PS)
- Touchpad
- OPTION
- RS (R3)
- R1, R2
- 

CONNECTION AND INSTALLATION

Connecting a gamepad to PS3, PS4 console

- Connect the gamepad via a USB cable to an available USB port, then press the button «HOME». PS3, and PS4 systems will automatically establish a connection.

Connecting a gamepad to a PC

- Connect the gamepad via a USB cable to an available USB port of your PC.
- Windows will automatically detect the pointing device and install the driver (no third-party driver required). The manipulator operates in two modes «X-input» and «D-input». By default, the pointing device automatically turns on the X-Input mode, the indicator backlight on the pointing device is green, and the D-Input mode is blue.
- X-Input Mode
- In order to check and calibrate the gamepad, you need to open the «Devices and Printers» tab in the Windows control panel, the pad will appear as «Xbox 360 controller for Windows», then right-click on the icon, select the line «Game controllers settings» (Fig. 2) (you may need administrator rights). In this case, the «Game devices» window will appear (Fig. 3).

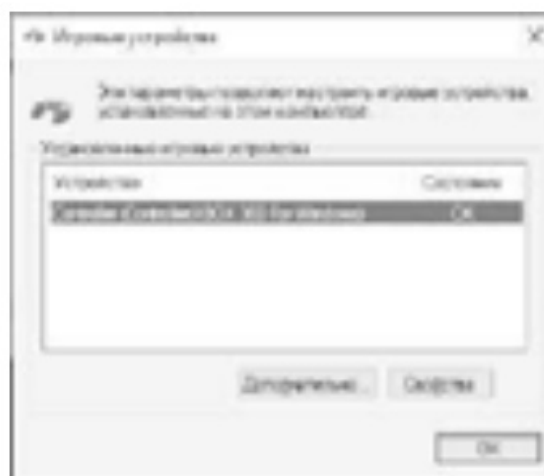


Fig. 3

- By clicking the «Properties» button, you can check the execution of commands by pressing the buttons and rotating the joysticks (Fig. 4).

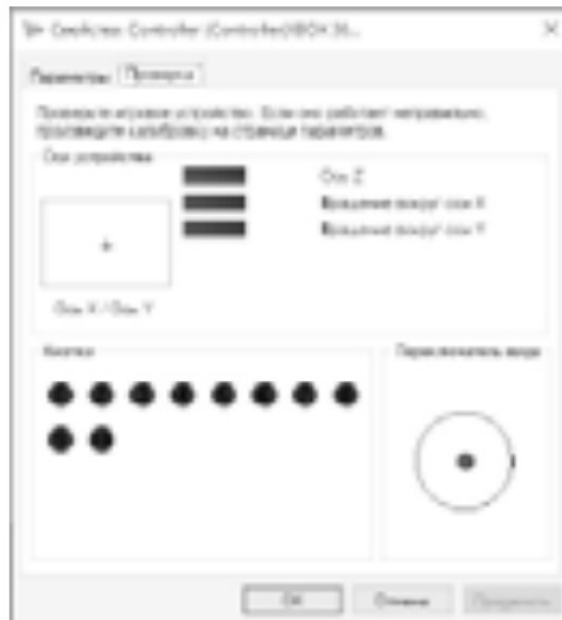


Fig. 4

To calibrate the joystick, select the «Parameters» tab (Fig. 5), click «Calibrate» and follow the further instructions. The «Restore» button resets the default settings.



Fig. 5

- D-Input Mode
- Connect the steering wheel to PC, X-input mode is enabled by default. Press and hold the «SHARE» + «OPTION» button for ~ 3 seconds, the manipulator will switch to D-input mode. When switching modes, the indicator will change color to blue.
- Go to the «Control Panel» menu, then click on the «Devices and Printers» icon, in the window that opens, select the «PC Gamepad» shortcut, right click on «Game Controllers Settings» (see Fig. 2).



Fig. 2

- Then click the «Properties» button (see Fig. 6)

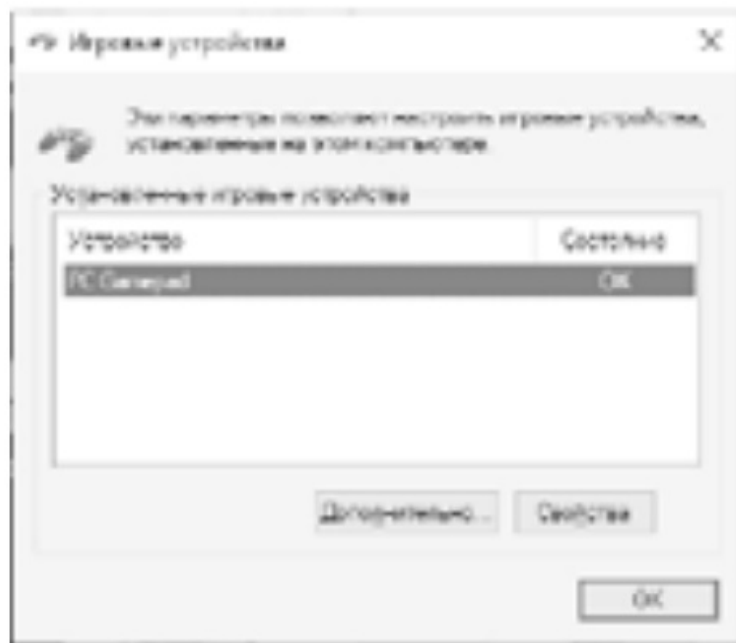


Fig. 6

in the window that opens (see Fig. 7), and you can check the operation of the axes and keys.

- To calibrate the joystick, select the «Parameters» tab (Fig. 7),

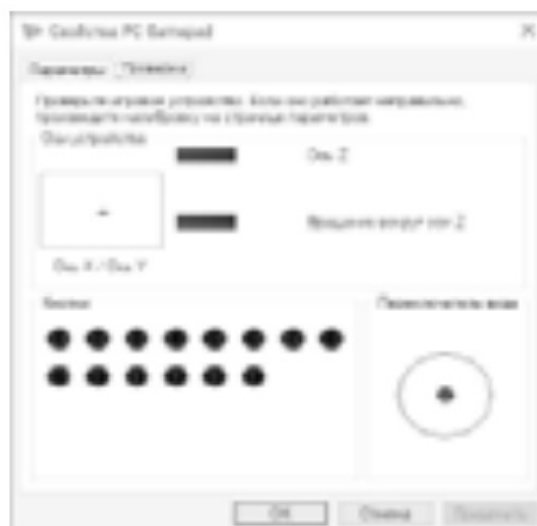


Fig. 7

click «Calibrate» and follow the next steps. The «Restore» button resets the default settings.

TROUBLESHOOTING

Problem	Solution
The game controller does not work correctly in Windows OS.	Calibrate the game controller.
Windows OS throws a driver error.	Restart your PC. Install latest Windows updates.
When connecting game controller, Windows OS does not recognize the device.	Connect the game controller to another USB port.
The game controller is not detected by PS3, PS4.	Restart your console.

If none of the above-mentioned solutions removes the problem, please seek professional advice at your nearest authorized service center. Never try to repair the device on your own.

Model: GC-400

Importer: Tiralana OY, Office 102, Kotolahdentie 15, 48310 Kotka, Finland.


Manufacturer: SVEN PTE. LTD, 176 Joo Chiat Road, № 02-02, Singapore, 427447. Produced under the control of Oy Sven Scandinavia Ltd. 15, Kotolahdentie, Kotka, Finland, 48310. Made in China. ® Registered Trademark of

Oy SVEN Scandinavia Ltd. Finland.

<https://tm.by>

VHTepHeT-MarasnH TM.by

Documents / Resources

	<p>SVEN GC-400 Wired Gamepad [pdf] Instruction Manual GC-400 Wired Gamepad, GC-400, Wired Gamepad, Gamepad</p>
---	--

[Manuals+](#)